



## TRANSPORTATION SPECS - All Terrain Cranes

### DEMAG MODEL AC 435 - 180 TON CAPACITY

<u>COMPONENT WEIGHTS</u>	<u>LBS.</u>	<u>KGS.</u>	<u>JIB O.D 49" X 44"</u>	<u>LBS.</u>	<u>KGS.</u>
Complete Crane (incl. block, ball & max. cwt.)	241,150	109 415	Tele-Extension Unit 180-6-372		
Main Unit c/w Outriggers (excl. block, ball & cwt.)	(1) 132,000	59 891	Fixed Fly 39' - 59' - 79' - 98'		
Main Unit Stripped (excluding block, ball, cwt, boom, boom cylinders, front & rear outriggers)	76,700	34 792	Luffing Fly 59'-79'-98'-118'- 138'		
			<u>JIB COMPONENT WEIGHTS</u>		
Counterweight - Minimum	24,200	10 980	Butt 6M 19'8"	2,158	980
Counterweight - Maximum	103,500	46 960	Tip 6.5M 21'4"	1,418	643
Unit 180-6-372 Counterweight - Max.	97,000	44 011	Insert 6M 19'8"	948	430
Certificate Weight		42 000	HD Insert 6M 19'8"	1,278	580
			Jib Mast 7M 23'	1,418	643
			<u>COUNTERWEIGHT</u>	<u>LBS.</u>	<u>KGS.</u>
110 Ton Block	3,970	1 802	Top Slab	10,000	4 537
24 Ton Block	1,675	760	Bottom Slab	13,200	5 990
Boom Dolly	11,000	4 990	Basic Slab (2) ea.	17,600	7 986
Main Load Line (21 mm x 300 M)	1,418	643	Auxiliary (2) ea.	22,000	9 982
Auxiliary Load Line (21 mm x 210 M)	1,228	557			
Boom	42,000	19 052			
Boom Cylinder	3,300	1 497			
Front Outriggers	5,000	2 268			
Rear Outriggers	5,000	2 268			

# STERLING CRANE

## TRANSPORTATION\*\*

Average Driving Speed

45 km/hr

### Alberta

- Spring\*
- Summer and Winter

Weight  
(1)

Trailer  
Small  
64 wh

Drive

Tandem  
dolly

### British Columbia

- Spring (Lower Mainland)
- Summer & Winter

Drive

Tandem  
dolly

### All Provinces / All Seasons

No.

Trailer

24,200 lb. cwt. & misc.

1

Tandem

Drive

Tandem  
Dolly

42,000 lb. cwt. & misc.

1

Tridem

### Saskatchewan

- Spring\*
- Summer & Winter

Drive

Tandem  
dolly

59,200 lb. cwt. & misc.

1  
or  
2

S/B  
Train  
Tandem

Drive

Tandem  
Dolly

103,500 lb. cwt. & misc.

1  
+

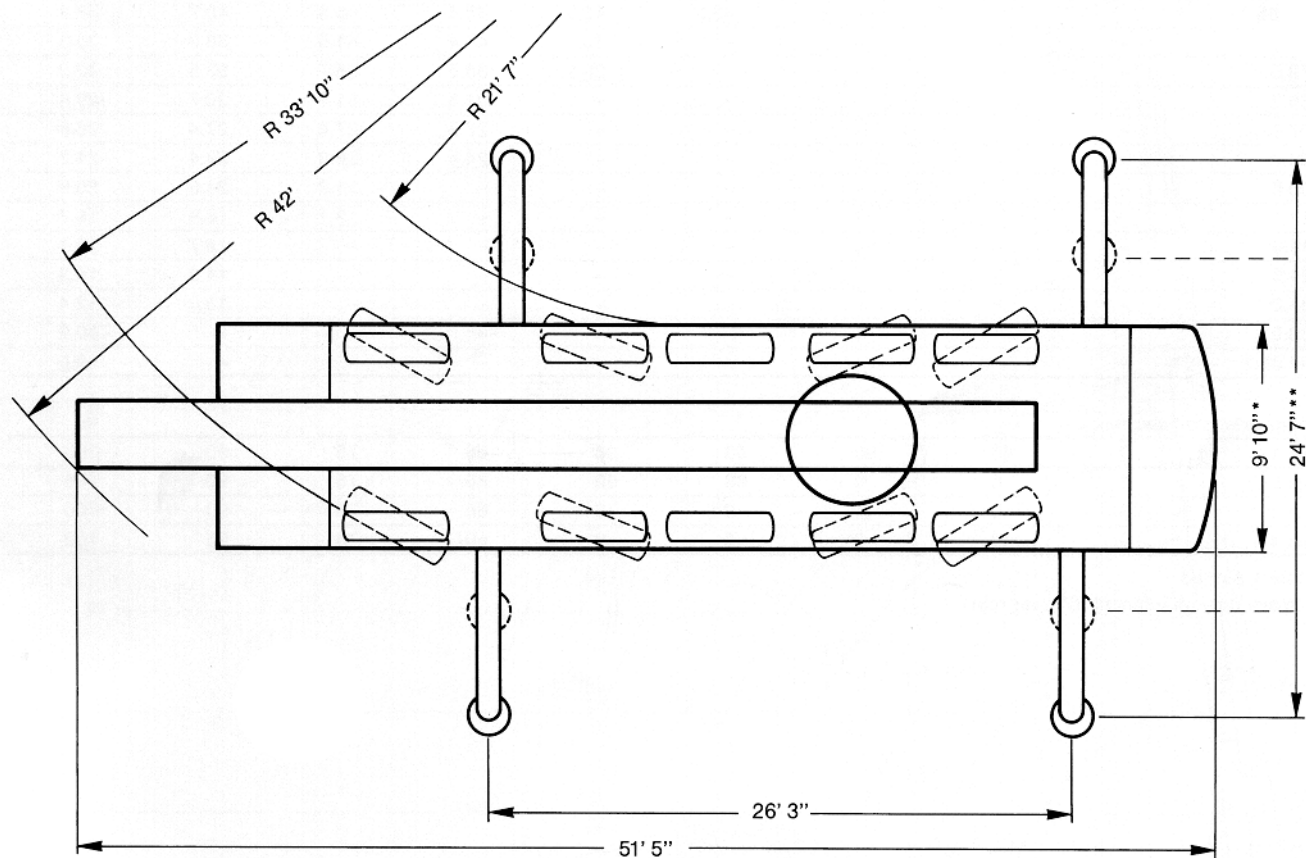
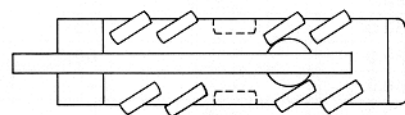
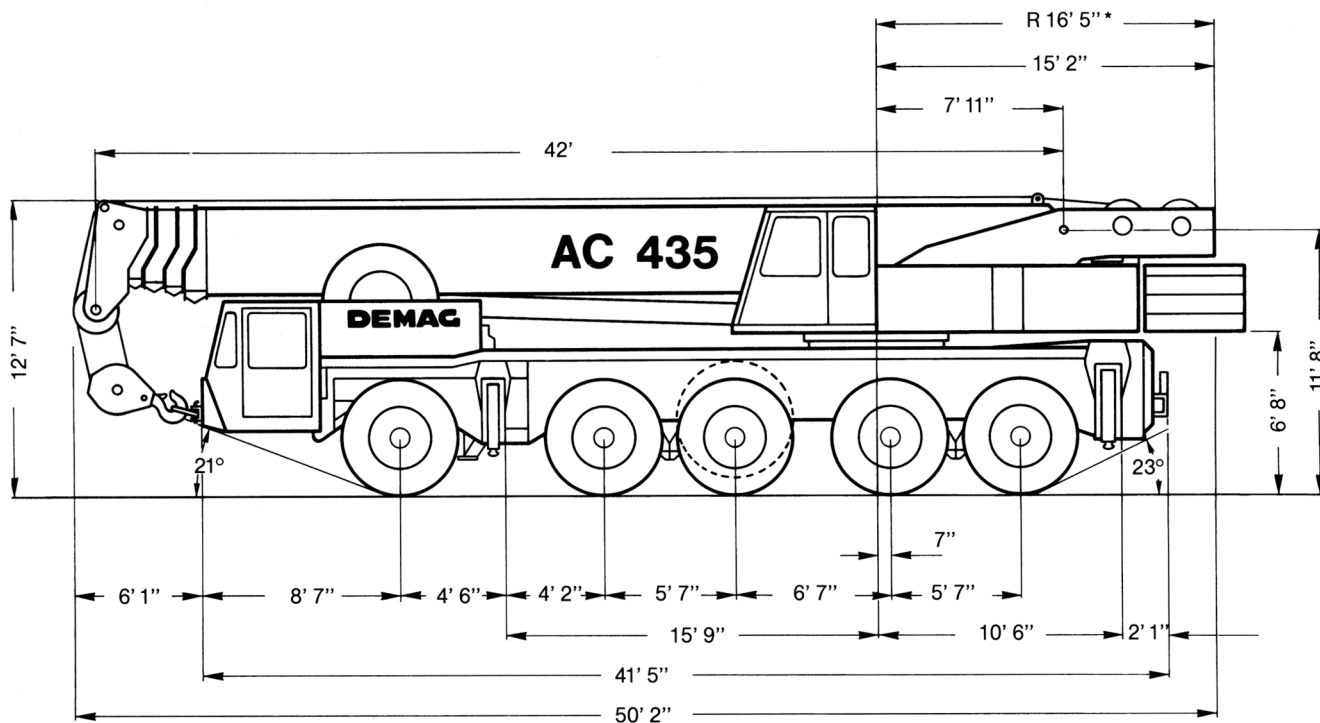
S/B  
Train  
Tandem

\*Restricted travel on some secondary roads

\*\* Block, ball, counterweight and jib are always removed and hauled separately. Trailer types and numbers dependant on amount of counterweight and/or jib required.

# STERLING CRANE

## Dimensions



\* Width with more than 59,000 lb counterweight 16' 5", tail swing 16' 11"

\*\* Duties for outrigger base 16' upon request

# STERLING CRANE

## DEMAG AC 435'S CONFIGURATION

Unit	Main CWT	Luffing Jib 59,500 CWT 83° boom elevation	Luffing Jib 59,500 CWT 70° boom elevation	Fixed Fly Jib	Tele Jib	Super Lift	Intermediate Outrigger Chart
180-6-371 S/N 37224	103,500	√	√	√		N/A	√
180-6-372 S/N 37145	97,000				√	N/A	√
180-6-373 S/N 37215	103,500	√	√	√		N/A	√

Unit	Quick Disconnect	Rooster Sheave	Single Sheave Block	Three Sheave Block	Double J Block	Headache Ball	Notes
180-6-371 S/N 37224	√	√	√ 22 ton		√ 7 sheave 100 ton		
180-6-372 S/N 37145			√ 22 ton	√ 63 ton			
180-6-373 S/N 37215			√ 25 ton		√ 5 sheave 80 ton		