



TRANSPORTATION SPECS - All Terrain Cranes

TADANO MODEL ATF-1000XL - 100 TON CAPACITY

COMPONENT WEIGHTS

		<u>LBS.</u>	<u>KGS.</u>
Complete Crane	(1)	129,360	58 678
(incl. block, ball, jib & max. cwt.)			
Main Unit c/w Outriggers	(2)	106,000	48 082
(incl. block, ball, jib & 3.6 T cwt.)			
Counterweight – Min.		7,940	3 602
Counterweight – Max.		29,760	13 500

ADDITIONAL INFORMATION

			<u>COUNTERWEIGHT</u>	<u>LBS.</u>	<u>KGS.</u>
69 Ton Block	1,320	599	#1 Fixed Slab (Bolted)	3,090	1 402
6.6 Ton Ball	330	150	#2 Fixed Slab (Bolted)	3,310	1 502
29' 6" – 52' 6" Stage Jib	2,150	975	#3 Removable Slab	1,540	699
Spare Tire	882	400	#4 Removable Slab	3,090	1 402
Main Load Line (18 mm x 183 M)	660	300	#5 Removable Slab	7,050	3 198
Auxiliary Load Line (16 mm x 152 M)	435	198	#6 Removable Slab	11,680	5 298

TRANSPORTATION

Average Driving Speed 70 km/hr

Alberta and Saskatchewan

	<u>Weight</u>	<u>Trailer</u>
• Spring	(1)	64 wh
	(2)	48 wh
• Summer	(1)	48 wh
	(2)	40 wh
• Summer	(1)	40 wh
	(2)	28 wh

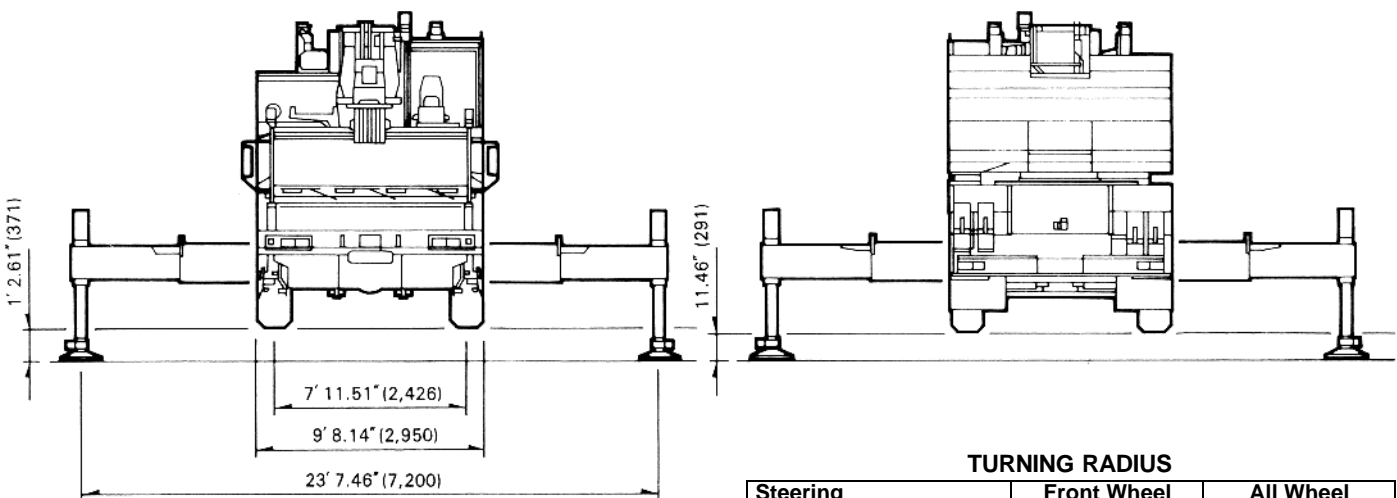
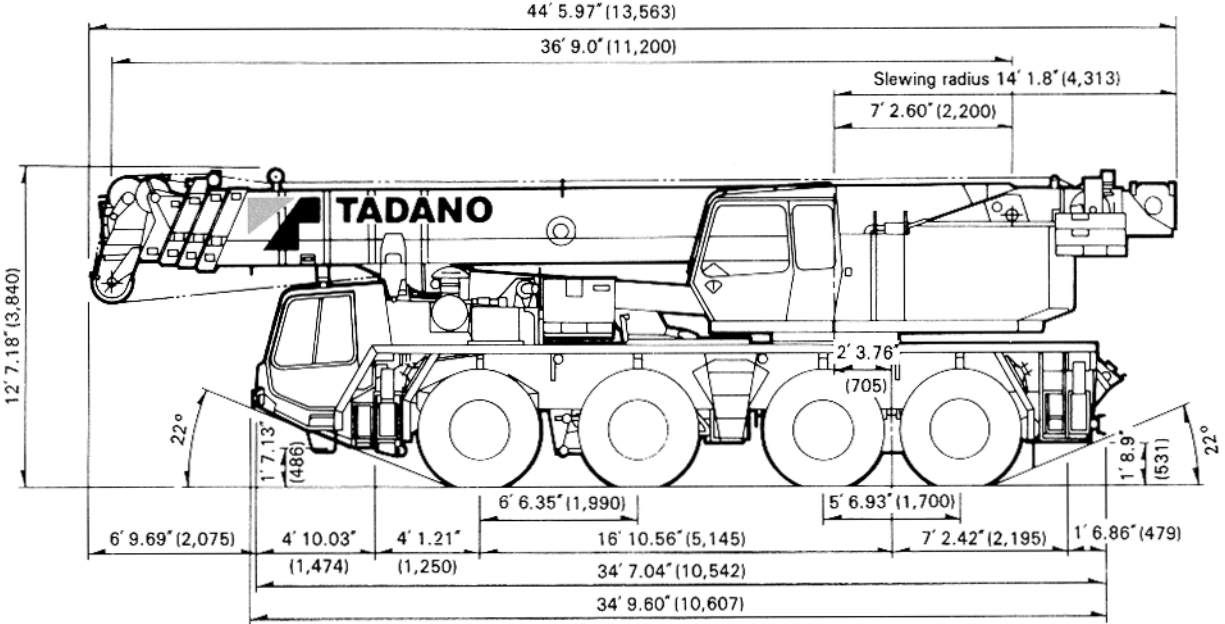
All Provinces / All Seasons

	<u>No</u>	<u>Trailer</u>
• 21,820 lb. cwt. & misc.	(1)	Tandem

STERLING CRANE

DIMENSIONS

() :mm



TURNING RADIUS

Steering	Front Wheel	All Wheel
Inside	22.3 ft (6.8m)	14.4 ft (4.4m)
Carrier	40.7 ft (12.4m)	30.7 ft (9.35m)
Over boom extension	44.6 ft (13.6m)	35.8 ft (10.9m)