



TRANSPORTATION SPECS - All Terrain Cranes

LIEBHERR MODEL LTM 1200/1 - 250 TON CAPACITY

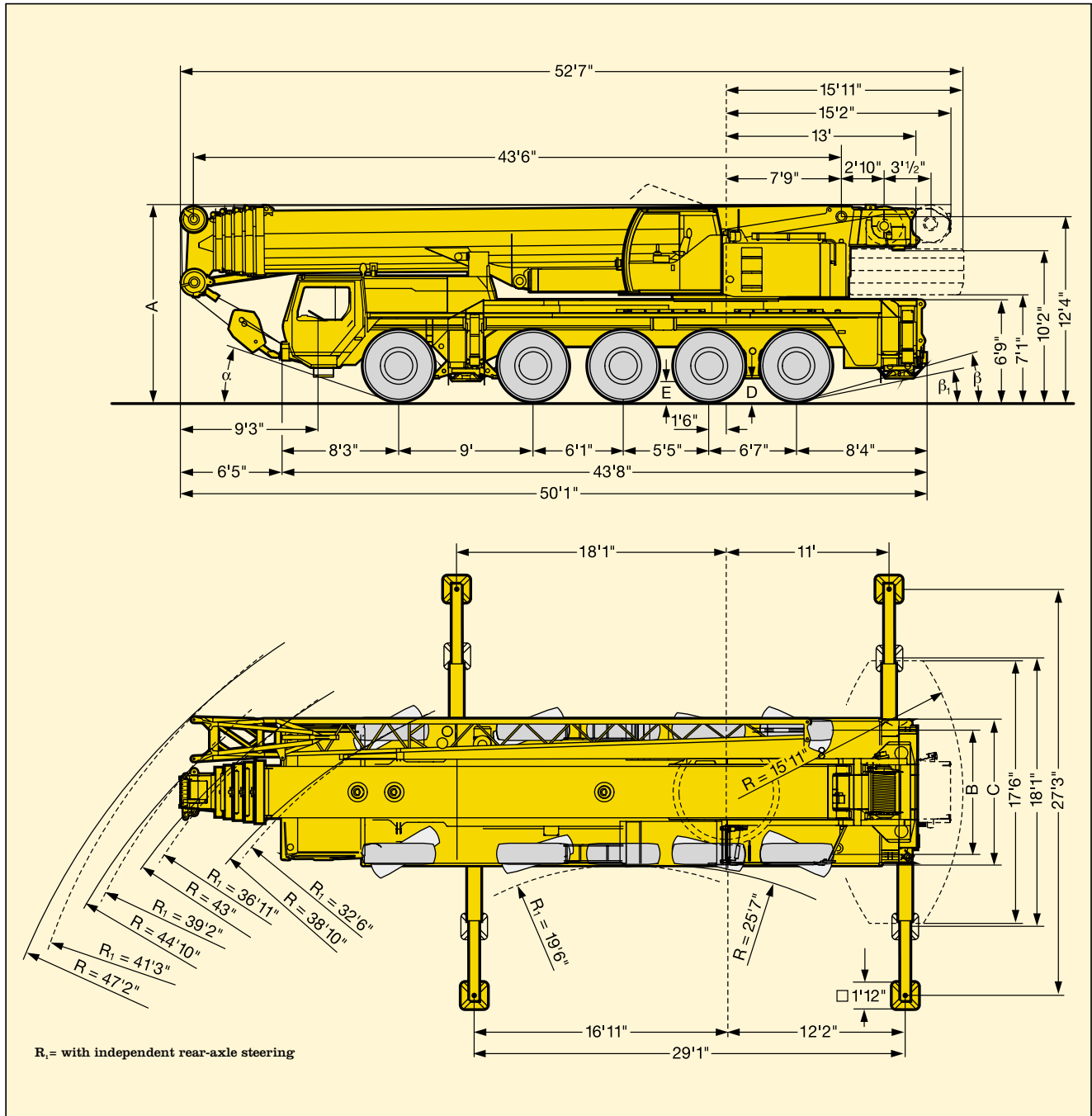
<u>COMPONENT WEIGHTS</u>	<u>LBS.</u>	<u>KGS.</u>	<u>COUNTERWEIGHT COMPOSITION</u>	<u>LBS.</u>	<u>KGS.</u>
Complete Crane (Incl. 7 Sheave Block & Swingaway Jib)	135,800	61 750	1 - Base Plate (9'9" x 8' x 3'3") 2 - Slabs (9'9" x 8' x 11")	26,400 26,400 ea	12 000 12 000 ea
Main Unit	126,984	57 720	1 - Slab (9'9" x 8' x 11") 2 - Cheeks (6'8"x 3'x10" x 3'1")	19,800 26,400 ea	9 000 12 000 ea
Counterweight Minimum	0	0			
Counterweight Maximum	152,100	69 136			
<u>ADDITIONAL INFORMATION</u>					
157.3 Ton Block (7 Sheave)	3,850	1 750			
34.3 Ton Block (1 Sheave)	1,914	870			
11.6 Ton Ball	1,100	500			
Swingaway Jib 40' – 72'	5,016	2 280			
Jib Inserts:					
2 – 23' Sections Each	2,394	1 088			
1 – 23' Extensions for Telescopic Boom	1,606	730			
Spare Tire (20.5 x R25)	858	390			
Auxiliary Winch	3,808	1 731			
Front Outrigger	2,332	1 060			
Rear Outrigger	2,695	1 225			
<u>TRANSPORTATION</u>					
Average Driving Speed		60 km/hr			
<u>Alberta and British Columbia</u>					
• Spring & Post Ban		Drive			
• Summer through Winter		Drive			


TRANSPORTATION REQUIREMENTS FOR COUNTERWEIGHT

26,500 lb. of counterweight (1 x 26,500 lb.)	Tandem
52,900 lb. of counterweight (2 x 26,400 lb.)	Super B or Tridem
77,400 lb. of counterweight (3 x 26,400 lb.)	Super B or 2 Tandems
99,200 lb. of counterweight (3 x 26,400 lb.; 1 x 19,800 lb.)	Super B and Tandem or 2 Tridems
125,700 lb. of counterweight (4 x 26,400 lb.; 1 x 19,800 lb.)	Super B and Tridem
152,100 lb. of counterweight (5 x 26,400 lb.; 1 x 19,800 lb.)	Two Super B Trains

STERLING CRANE

Dimensions.



 16.00 R 25	Dimensions								
	A	A*	B	C	D	E	α	β	β_1
	13'1"	12'3"	8'4"	9'10"	1'4"	1'3"	21°	17°	13°

* lowered