



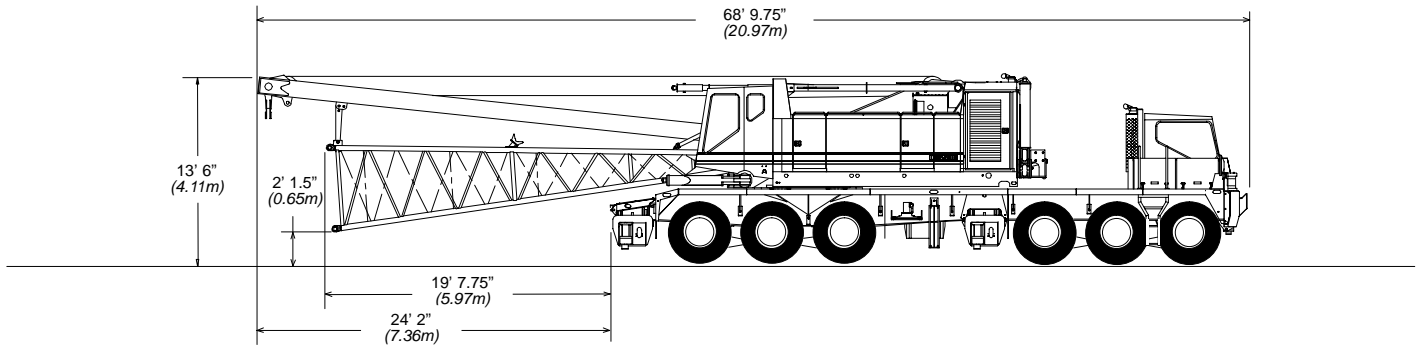
TRANSPORTATION SPECS - Conventional Truck Cranes

LINK-BELT MODEL HC-278H - 300 TON CAPACITY

| <u>COMPONENT WEIGHTS</u> | <u>LBS.</u> | <u>KGS.</u> | <u>BOOM TYPE: TUBULAR 80" X 68"</u> | <u>LBS.</u> | <u>KGS.</u> |
|--|-------------|-------------|--|-------------|-------------|
| Complete Crane C/W 70' Boom, Full Counterweight, Block & Ball | 320,123 | 145 207 | Open Throat: Min 60' – Max. 30' | | |
| House, Butt, Carrier c/w Outriggers | 173,890 | 78 876 | Butt Section 30' | 4,912 | 2 228 |
| House c/w Butt | 77,130 | 34 986 | Self Assembly 10' | 3,275 | 1 486 |
| Carrier c/w Outriggers | 96,760 | 43 890 | Insert 20' 2 pcs. ea. | 2,163 | 981 |
| | | | Insert 40' 1 pc. | 3,687 | 1 672 |
| | | | Insert 50' 3 pcs. ea. | 4,538 | 2 058 |
| | | | Tip 30' | 5,612 | 2 546 |
| | | | <u>LUFFING BOOM TYPE: TUBULAR 100" X 85"</u> | | |
| <u>ADDITIONAL INFORMATION</u> | | | Open Throat Min: 140' – 250' | | |
| 200 Ton Block (6 Sheave) | 5,721 | 2 595 | Butt Section 35' | 10,000 | 4 536 |
| 75 Ton Block (3 Sheave) | 1,700 | 772 | Insert 30' 2 pcs. ea. | 3,464 | 1 571 |
| 15 Ton Ball | 1,400 | 635 | Insert 40' 1 pc. | 4,609 | 2 091 |
| Counterweights: Upper A | 30,000 | 13 608 | Insert 50' 1 pc. | 5,608 | 2 544 |
| B | 25,200 | 11 431 | Tip 7.5' | 1,000 | 454 |
| C | 21,500 | 9 752 | Bridle | 2,000 | 910 |
| D | 21,500 | 9 752 | Luffing Balance Arm 43' | 7,500 | 3 402 |
| Bumper A | 11,400 | 5 171 | Luffing Mast 35' | 2,000 | 907 |
| B | 15,300 | 6 940 | Tires & Bracket | 1,000 | 454 |
| | | | <u>FIXED JIB: TUBULAR 32" X 24"</u> | | |
| Front Outrigger | 10,560 | 4 791 | Min 30' – 100' | | |
| Rear Outrigger | 10,560 | 4 791 | Jib Mast, Butt & Tip 30' | 2,180 | 989 |
| Main Outrigger Jacks and Floats | 5,060 | 2 296 | Insert 10' 1 pc. | 259 | 117 |
| Main Load Line 1 1/8" x 1,025' | 2,399 | 1 088 | Insert 20' 3 pcs. ea. | 442 | 200 |
| Auxiliary Load Line 1 1/8" x 1,084' | 2,537 | 1 151 | <u>LUFFING JIB: TUBULAR 80" X 68"</u> | | |
| Boom Hoist Line 1" x 870' | 1,610 | 730 | Min 100' – 200' | | |
| Third Drum Line 1" x 1,050' | 1,943 | 818 | Luffing Butt 10' | 1,000 | 454 |
| Third Drum Sheave for Butt Section | 2,373 | 1 076 | NOTE: Jib inserts and tip are 80" x 68" Boom Sections from above. | | |
| Third Drum Sheave Assembly for Tip | 2,832 | 1 285 | | | |
| Tire Size: 14 x 25 | | | | | |
| <u>TRANSPORTATION</u> | | | | | |
| Carrier | | | | | |
| Max. 60 km/hour | | | | | |
| 37.5 mph | | | | | |

STERLING CRANE

HC-278H Crane Transport Weights and Dimensions – approximate



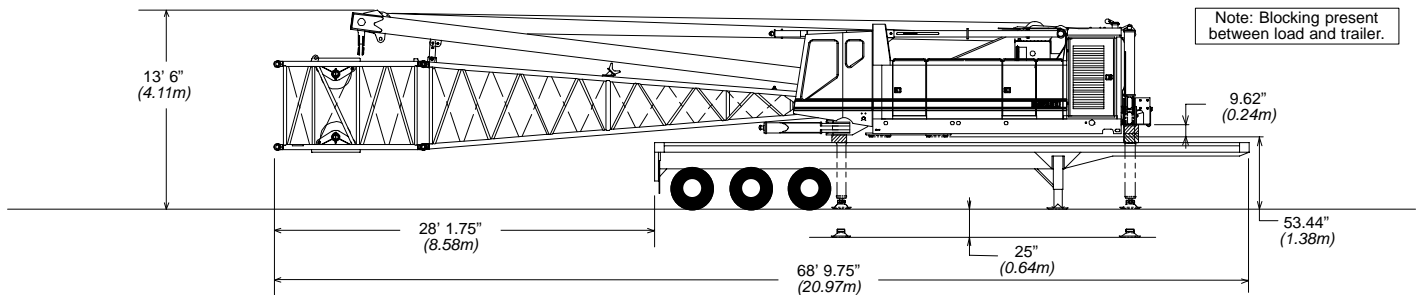
Transport Weights

without boom base – 168,824 lb (76 577kg)

with boom base – 173,736 lb (78 805kg)

with boom base and 10 ft self-assembly section – 177,011 lb (80 291kg)

Note: Carrier undecked with outrigger boxes and without jacks = 70,500 lb (31 978kg)

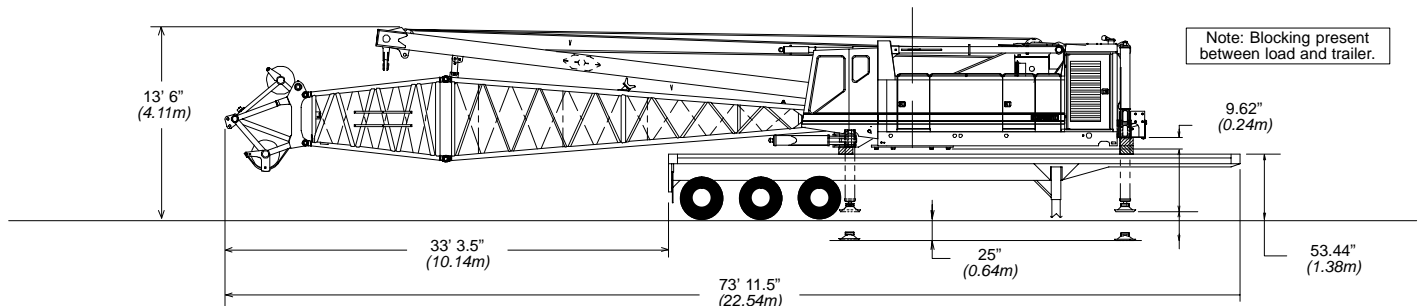


Transport Weights

without boom base – 76,976 lb (34 916kg)

with boom base – 83,173 lb (37 727kg)

with boom base and 10 ft self-assembly section – 84,757 lb (38 446kg)

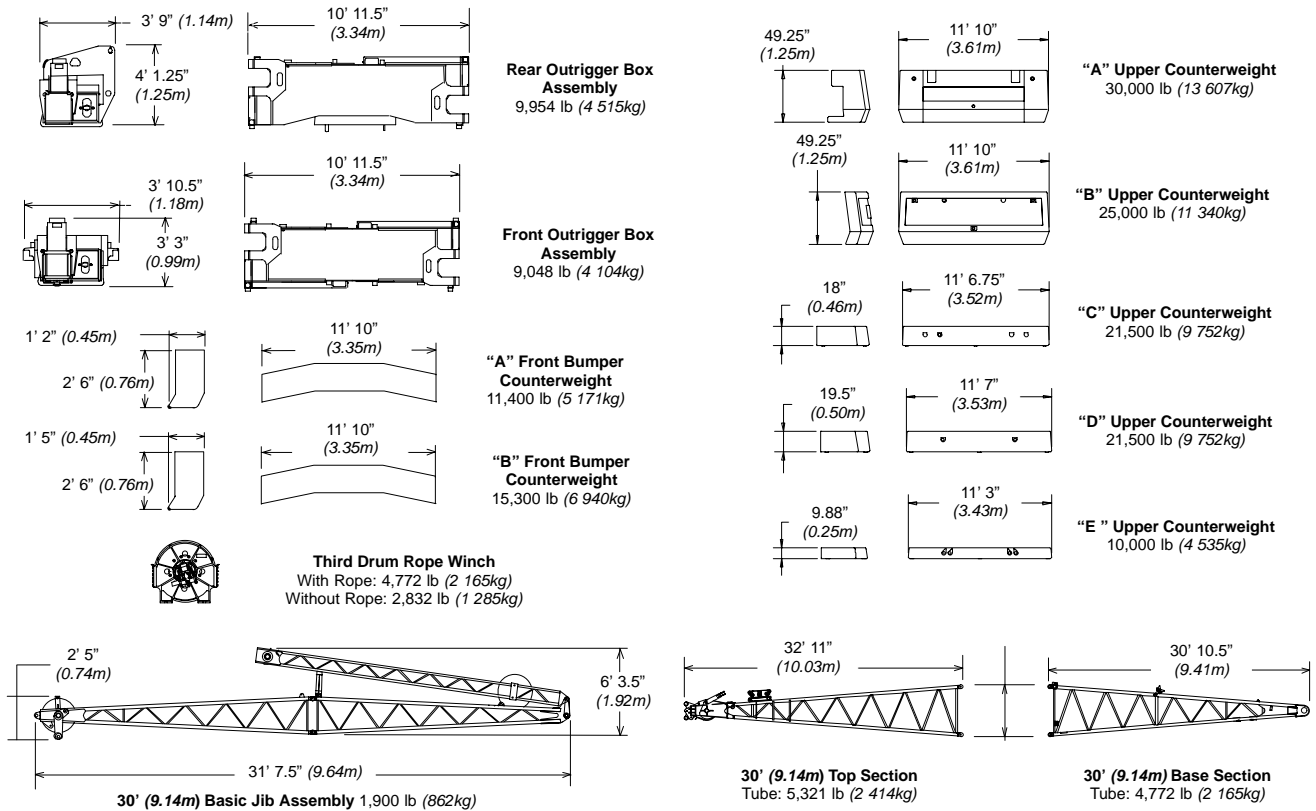


Transport Weights

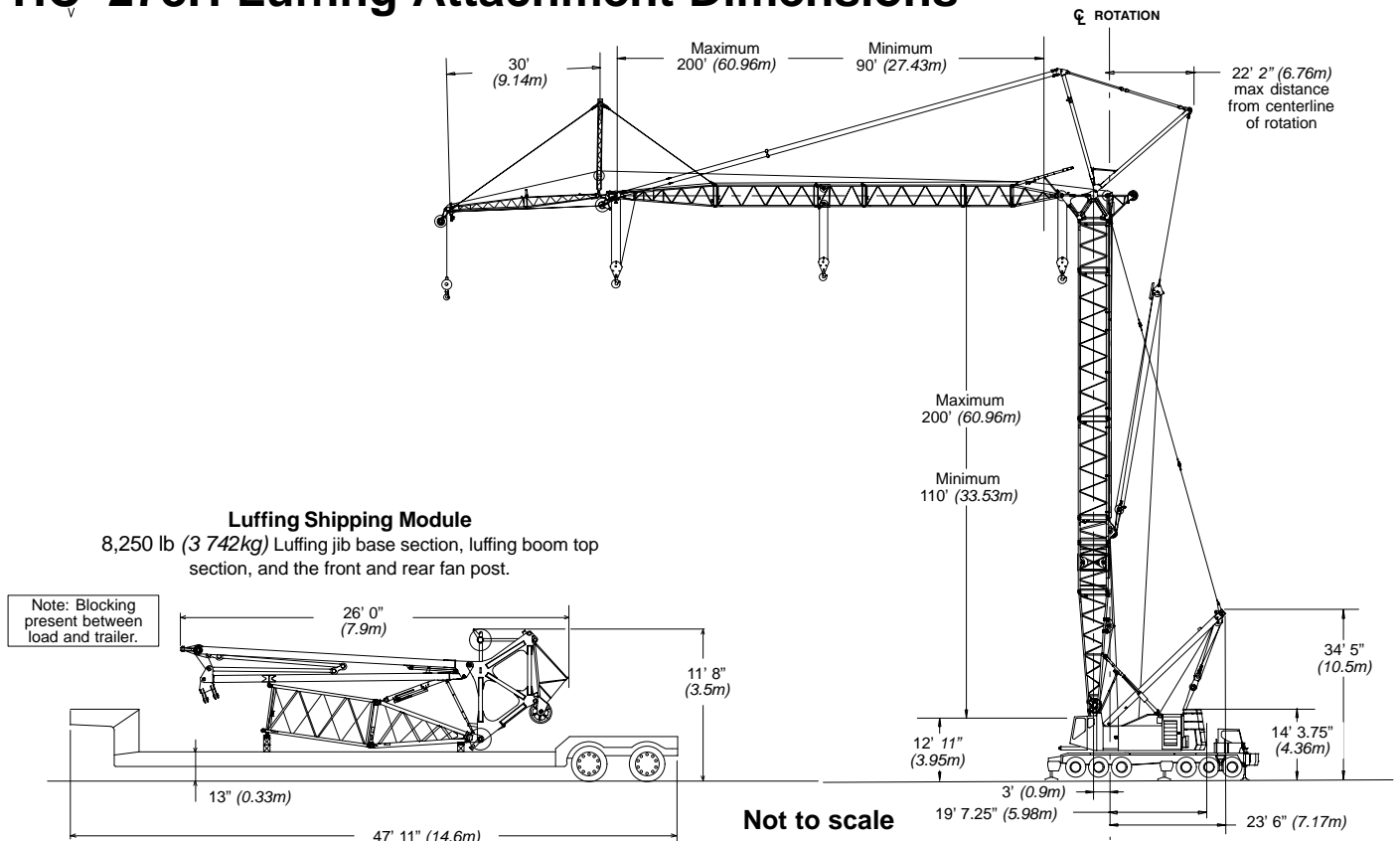
with hammerhead and transition section and head machinery – 86,996 lb (39 461kg)

STERLING CRANE

HC-278H Crane Transport Weights and Dimensions – approximate



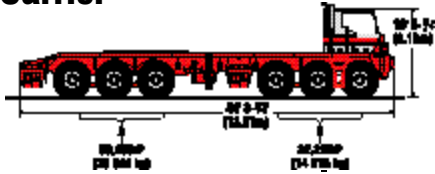
HC-278H Luffing Attachment Dimensions



STERLING CRANE

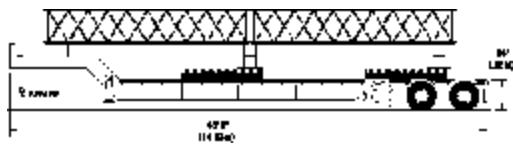
Transport loads

Carrier



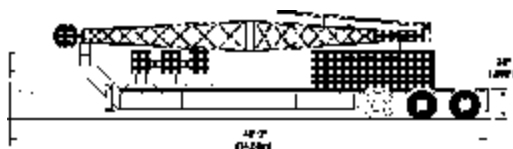
HC-278H II carrier 91,620 lbs (41 559 kg)
 Outrigger boxes and beams in place
 Outrigger jacks removed

Load #2



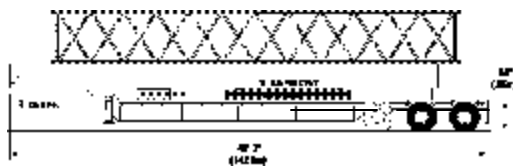
| | | |
|---------------------------------|-------------------|--------------------|
| Upper cwt "C" | 21,500 lbs | (9 752 kg) |
| Upper cwt "D" | 21,500 lbs | (9 752 kg) |
| 4 - 20' (6.10 m) jib extensions | 1,770 lbs | (803 kg) |
| | <u>44,770 lbs</u> | <u>(20 307 kg)</u> |

Load #3



| | | |
|---|-------------------|--------------------|
| Upper cwt "A" | 30,000 lbs | (13 608 kg) |
| Outrigger jacks, floats and handling tree | 6,400 lbs | (2 903 kg) |
| Basic 30' (9.14 m) jib | 1,900 lbs | (862 kg) |
| Rigging box | 4,000 lbs | (1 814 kg) |
| | <u>42,300 lbs</u> | <u>(19 187 kg)</u> |

Load #4



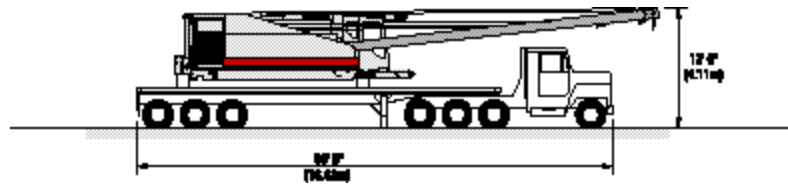
| | | |
|---------------------------------|-------------------|--------------------|
| Upper cwt "B" | 15,300 lbs | (6 940 kg) |
| Upper cwt "E" | 10,000 lbs | (4 536 kg) |
| 200-ton (181 mt) 6 sheave block | 3,900 lbs | (1 769 kg) |
| 50' (12.19 m) boom inserts | 5,143 lbs | (2 333 kg) |
| | <u>34,343 lbs</u> | <u>(15 578 kg)</u> |

Load #1 (Alternate "A")



HC-278H II upper with base section, special 10' (3.05 m) extension with lifting sheaves and wire rope 85,024 lbs (38 566 kg)

Load #1 (Alternate "B")



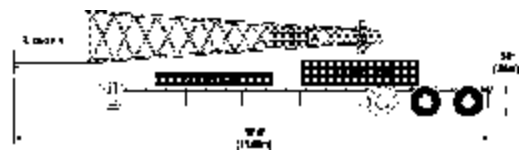
HC-278H II upper with live mast only 72,739 lbs (32 994 kg)

Load #1 (Alternate "C")



HC-278H II upper with base section and live mast 77,511 lbs (35 158 kg)

Load #5



| | | |
|----------------|-------------------|--------------------|
| Boom tip | 5,175 lbs | (2 347 kg) |
| Bumper cwt "A" | 11,400 lbs | (5 171 kg) |
| Upper cwt "B" | 25,200 lbs | (11 431 kg) |
| | <u>41,775 lbs</u> | <u>(18 949 kg)</u> |

Loads #6 & 7



Load 6:
 100' (30.48 m) boom 11 598 lbs (5 261 kg)

Load 7:
 100' (30.48 m) boom 9,650 lbs (4 377 kg)