

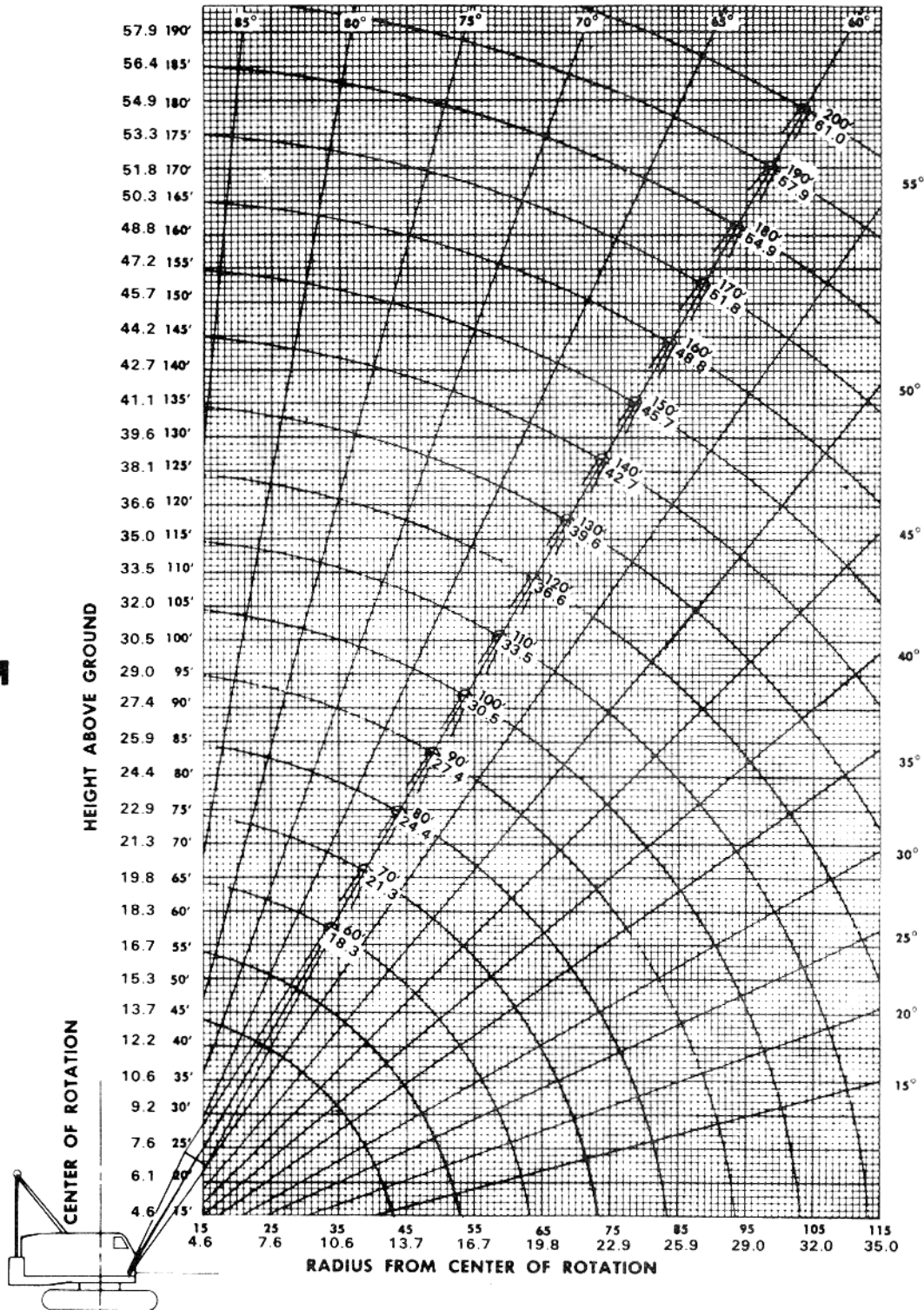


LIFTING CHARTS - Crawler Cranes

AMERICAN MODEL 7260 - 100 TON CAPACITY

WORKING RANGES

**BOOM
ANGLE
DIAGRAM**



STERLING CRANE

LIFT RATINGS with 59S Tubular Chord Hammerhead Boom and "S-S" Counterweight (49,700 lbs.) (15,150 kg.)

METRIC

Boom Length (Feet)	Radius In Feet	Boom Angle Degrees	Lift Rating (Pounds)	Feet From Boom Point	Min. Load Line
40 feet	11	82.8	200000	46	8
	12	81.3	200000	46	8
	15	77.0	175210	45	7
	20	69.6	106560	44	5
	25	61.7	76070	41	3
	30	53.1	58830	38	3
	35	43.3	47730	33	2
	40	30.9	39970	26	2
50 feet	13	81.9	200000	56	8
	15	79.6	175470	55	7
	20	73.8	106700	54	5
	25	67.7	76160	52	3
	30	61.3	58890	50	3
	35	54.5	47790	47	2
	40	47.0	40030	42	2
	50	27.4	29900	29	2
60 feet	14	82.3	190520	66	8
	15	81.3	175620	65	7
	20	76.5	106750	64	5
	25	71.6	76170	63	3
	30	66.5	58890	61	3
	35	61.1	47770	59	2
	40	55.5	40010	55	2
	50	42.6	29890	46	2
70 feet	15	82.6	175720	75	7
	20	78.5	106760	75	5
	25	74.3	76140	73	3
	30	70.0	58840	72	3
	35	65.6	47710	70	2
	40	61.0	39950	67	2
	50	51.0	29820	60	2
	60	39.3	23500	50	1
80 feet	16	82.8	155850	85	7
	20	79.9	106770	85	5
	25	76.3	76110	84	3
	30	72.6	58790	82	3
	35	68.8	47650	81	2
	40	64.9	39890	78	2
	50	56.6	29760	73	2
	60	47.5	23440	65	1
90 feet	17	83.0	139910	95	6
	20	81.0	106740	95	5
	25	77.8	76040	94	3
	30	74.5	58700	93	3
	35	71.2	47550	91	2
	40	67.8	39780	89	2
	50	60.7	29640	85	2
	60	53.1	23320	78	1

Boom Length (Meters)	Radius In Meters	Boom Angle Degrees	Lift Rating (Kilograms)	Meters From Boom Point	Min. Load Line
12.2 meters	3.4	82.8	90720	14.0	8
	3.7	81.3	90720	14.0	8
	4.6	77.0	79480	13.7	7
	6.1	69.6	48340	13.4	5
	7.6	61.7	34510	12.5	3
	9.1	53.1	26690	11.6	3
	10.7	43.3	21650	10.1	2
	12.2	30.9	18130	7.9	2
15.2 meters	4.0	81.9	90720	17.1	8
	4.6	79.6	79590	16.8	7
	6.1	73.8	48400	16.5	5
	7.6	67.7	34550	15.8	3
	9.1	61.3	26710	15.2	3
	10.7	54.5	21680	14.3	2
	12.2	47.0	18160	12.8	2
	15.2	27.4	13560	8.8	2
18.3 meters	4.3	82.3	86420	20.1	8
	4.6	81.3	79660	19.8	7
	6.1	76.5	48420	19.5	5
	7.6	71.6	34550	19.2	3
	9.1	66.5	26710	18.6	3
	10.7	61.1	21670	18.0	2
	12.2	55.5	18150	16.8	2
	15.2	42.6	13560	14.0	2
21.3 meters	4.6	82.6	79710	22.9	7
	6.1	78.5	48430	22.9	5
	7.6	74.3	34540	22.3	3
	9.1	70.0	26690	21.9	3
	10.7	65.6	21640	21.3	2
	12.2	61.0	18120	20.4	2
	15.2	51.0	13530	18.3	2
	18.3	39.3	10660	15.2	1
24.4 meters	4.9	82.8	70690	25.9	7
	6.1	79.9	48430	25.9	5
	7.6	76.3	34520	25.6	3
	9.1	72.6	26670	25.0	3
	10.7	68.8	21610	24.7	2
	12.2	64.9	18090	23.8	2
	15.2	56.6	13500	22.3	2
	18.3	47.5	10630	19.8	1
27.4 meters	5.2	83.0	63460	29.0	6
	6.1	81.0	48420	29.0	5
	7.6	77.8	34490	28.7	3
	9.1	74.5	26630	28.3	3
	10.7	71.2	21570	27.7	2
	12.2	67.8	18040	27.1	2
	15.2	60.7	13440	25.9	2
	18.3	53.1	10580	23.8	1

STERLING CRANE

with 59S Tubular Chord Hammerhead Boom

METRIC

Boom Length (Feet)	Radius In Feet	Boom Angle Degrees	Lift Rating (Pounds)	Feet From Boom Point	Min. Load Line
90 feet cont.	70	44.6	18990	69	1
	80	34.4	15830	57	1
	90	20.0	13410	36	1
100 feet	19	82.5	115920	105	5
	20	81.9	106700	105	5
	25	79.0	75970	104	3
	30	76.1	58600	103	3
	35	73.2	47440	102	2
	40	70.1	39660	100	2
	50	63.9	29520	96	2
	60	57.3	23190	90	2
	70	50.2	18860	83	1
	80	42.1	15710	73	1
	90	32.5	13300	60	1
100	18.9	11390	38	1	
110 feet	20	82.7	106650	115	5
	25	80.0	75880	114	3
	30	77.4	58490	113	3
	35	74.7	47320	112	2
	40	72.0	39530	111	2
	50	66.4	29380	107	2
	60	60.6	23050	102	1
	70	54.4	18720	95	1
	80	47.7	15570	87	1
	90	40.1	13170	77	1
	100	31.0	11270	62	1
110	18.0	9720	40	1	
120 feet	21	82.8	97800	125	4
	25	80.9	75800	125	3
	30	78.5	58400	124	3
	35	76.0	47210	123	2
	40	73.5	39410	121	2
	50	68.5	29250	118	2
	60	63.3	22920	113	1
	70	57.8	18590	107	1
	80	51.9	15440	100	1
	90	45.5	13040	91	1
	100	38.3	11150	80	1
	110	29.6	9610	65	1
120	17.2	8340	41	1	
130 feet	22	82.9	84330	135	4
	25	81.6	75710	135	3
	30	79.4	58280	134	3
	35	77.1	47080	133	2
	40	74.8	39280	132	2
	50	70.2	29110	128	2
	60	65.5	22770	124	1
	70	60.5	18430	119	1
	80	55.3	15280	113	1
	90	49.7	12880	105	1
	100	43.6	11000	96	1
	110	36.7	9470	83	1
	120	28.4	8200	67	1
130	16.5	7120	42	1	
140 feet	24	82.6	71780	145	3
	25	82.2	71780	145	3
	30	80.1	58170	144	3
	35	78.0	46950	143	2
	40	75.9	39140	142	2
	50	71.7	28960	139	2
	60	67.3	22610	135	1
	70	62.8	18270	131	1
	80	58.1	15120	125	1
	90	53.1	12720	118	1
	100	47.8	10840	110	1
110	41.9	9310	99	1	

Boom Length (Meters)	Radius In Meters	Boom Angle Degrees	Lift Rating (Kilograms)	Meters From Boom Point	Min. Load Line
27.4 meters cont.	21.3	44.6	8610	21.0	1
	24.4	34.4	7180	17.4	1
	27.4	20.0	6080	11.0	1
30.5 meters	5.8	82.5	52580	32.0	5
	6.1	81.9	48400	32.0	5
	7.6	79.0	34460	31.7	3
	9.1	76.1	26580	31.4	3
	10.7	73.2	21520	31.1	2
	12.2	70.1	17990	30.5	2
	15.2	63.9	13390	29.3	2
	18.3	57.3	10520	27.4	2
	21.3	50.2	8550	25.3	1
	24.4	42.1	7130	22.3	1
	27.4	32.5	6030	18.3	1
30.5	18.9	5170	11.6	1	
33.5 meters	6.1	82.7	48380	35.1	5
	7.6	80.0	34420	34.7	3
	9.1	77.4	26530	34.4	3
	10.7	74.7	21460	34.1	2
	12.2	72.0	17930	33.8	2
	15.2	66.4	13330	32.6	2
	18.3	60.6	10460	31.1	1
	21.3	54.4	8490	29.0	1
	24.4	47.7	7060	26.5	1
	27.4	40.1	5970	23.5	1
	30.5	31.0	5110	18.9	1
33.5	18.0	4410	12.2	1	
36.6 meters	6.4	82.8	44360	38.1	4
	7.6	80.9	34380	38.1	3
	9.1	78.5	26490	37.8	3
	10.7	76.0	21410	37.5	2
	12.2	73.5	17880	36.9	2
	15.2	68.5	13270	36.0	2
	18.3	63.3	10400	34.4	1
	21.3	57.8	8430	32.6	1
	24.4	51.9	7000	30.5	1
	27.4	45.5	5910	27.7	1
	30.5	38.3	5060	24.4	1
	33.5	29.6	4360	19.8	1
36.6	17.2	3780	12.5	1	
39.6 meters	6.7	82.9	38250	41.1	4
	7.6	81.6	34340	41.1	3
	9.1	79.4	26440	40.8	3
	10.7	77.1	21360	40.5	2
	12.2	74.8	17820	40.2	2
	15.2	70.2	13200	39.0	2
	18.3	65.5	10330	37.8	1
	21.3	60.5	8360	36.3	1
	24.4	55.3	6930	34.4	1
	27.4	49.7	5840	32.0	1
	30.5	43.6	4990	29.3	1
	33.5	36.7	4300	25.3	1
	36.6	28.4	3720	20.4	1
39.6	16.5	3230	12.8	1	
42.7 meters	7.3	82.6	32560	44.2	3
	7.6	82.2	32560	44.2	3
	9.1	80.1	26390	43.9	3
	10.7	78.0	21300	43.6	2
	12.2	75.9	17750	43.3	2
	15.2	71.7	13140	42.4	2
	18.3	67.3	10260	41.1	1
	21.3	62.8	8290	39.9	1
	24.4	58.1	6860	38.1	1
	27.4	53.1	5770	36.0	1
	30.5	47.8	4920	33.5	1
33.5	41.9	4220	30.2	1	

STERLING CRANE

with 59S Tubular Chord Hammerhead Boom

METRIC

Boom Length (Feet)	Radius In Feet	Boom Angle Degrees	Lift Rating (Pounds)	Feet From Boom Point	Min. Load Line
140 feet cant	120	35.3	8050	87	1
	130	27.3	6980	70	1
	140	15.9	6060	44	1
150 feet	25	82.7	62380	155	3
	30	80.8	58050	154	3
	35	78.8	46820	153	2
	40	76.9	38990	152	2
	50	72.9	28800	149	2
	60	68.9	22450	146	1
	70	64.8	18110	142	1
	80	60.4	14960	136	1
	90	55.9	12560	130	1
	100	51.2	10670	123	1
	110	46.1	9140	114	1
	120	40.4	7880	103	1
	130	34.1	6820	90	1
	140	26.3	5910	72	1
	150	15.3	5120	45	1

Boom Length (Meters)	Radius In Meters	Boom Angle Degrees	Lift Rating (Kilograms)	Meters From Boom Point	Min. Load Line
42.7 meters cont.	36.6	35.3	3650	26.5	1
	39.6	27.3	3170	21.3	1
	42.7	15.9	2750	13.4	1
45.7 meters	7.6	82.7	28300	47.2	3
	9.1	80.8	26330	46.9	3
	10.7	78.8	21240	46.6	2
	12.2	76.9	17690	46.3	2
	15.2	72.9	13060	45.4	2
	18.3	68.9	10180	44.5	1
	21.3	64.8	8210	43.3	1
	24.4	60.4	6790	41.5	1
	27.4	55.9	5700	39.6	1
	30.5	51.2	4840	37.5	1
	33.5	46.1	4150	34.7	1
	36.6	40.4	3570	31.4	1
	39.6	34.1	3090	27.4	1
	42.7	26.3	2680	21.9	1
	45.7	15.3	2320	13.7	1

with 59S Tubular Chord Tapered Tip Boom

Boom Length (Feet)	Radius In Feet	Boom Angle Degrees	Lift Rating (Pounds)	Feet From Boom Point	Min. Load Line
60 feet	14	80.5	153940	65	6
	15	79.6	153940	64	6
	20	74.7	106970	63	5
	25	69.6	76530	62	3
	30	64.5	59340	59	3
	35	59.0	48280	57	2
	40	53.3	40560	53	2
	50	40.1	30500	44	2
60	21.4	24220	27	1	
70 feet	16	80.2	153940	74	6
	20	76.9	106940	74	5
	25	72.6	76470	72	3
	30	68.3	59260	70	3
	35	63.8	48190	68	2
	40	59.2	40470	65	2
	50	49.1	30410	58	2
	60	37.0	24120	47	1
70	19.8	19820	29	1	
80 feet	17	80.7	139840	84	6
	20	78.6	106880	84	5
	25	74.9	76390	83	3
	30	71.1	59160	81	3
	35	67.3	48080	79	2
	40	63.4	40350	77	2
	50	55.0	30280	71	2
	60	45.7	24000	63	1
70	34.6	19700	51	1	
80	18.5	16560	31	1	
90 feet	19	80.5	115970	94	5
	20	79.8	106810	94	5
	25	76.6	76280	93	3
	30	73.3	59040	92	3
	35	69.9	47950	90	2
	40	66.5	40220	88	2
	50	59.4	30150	83	2
	60	51.6	23860	76	1

Boom Length (Meters)	Radius In Meters	Boom Angle Degrees	Lift Rating (Kilograms)	Meters From Boom Point	Min. Load Line
18.3 meters	4.3	80.5	69830	19.8	6
	4.6	79.6	69830	19.5	6
	6.1	74.7	48520	19.2	5
	7.6	69.6	34710	18.9	3
	9.1	64.5	26920	18.0	3
	10.7	59.0	21900	17.4	2
	12.2	53.3	18400	16.2	2
	15.2	40.1	13830	13.4	2
18.3	21.4	10990	8.2	1	
21.3 meters	4.9	80.2	69830	22.6	6
	6.1	76.9	48510	22.6	5
	7.6	72.6	34690	21.9	3
	9.1	68.3	26880	21.3	3
	10.7	63.8	21860	20.7	2
	12.2	59.2	18360	19.8	2
	15.2	49.1	13790	17.7	2
	18.3	37.0	10940	14.3	1
21.3	19.8	8990	8.8	1	
24.4 meters	5.2	80.7	63430	25.6	6
	6.1	78.6	48480	25.6	5
	7.6	74.9	34650	25.3	3
	9.1	71.1	26830	24.7	3
	10.7	67.3	21810	24.1	2
	12.2	63.4	18300	23.5	2
	15.2	55.0	13740	21.6	2
	18.3	45.7	10890	19.2	1
21.3	34.6	8940	15.5	1	
24.4	18.5	7510	9.4	1	
27.4 meters	5.8	80.5	52600	28.7	5
	6.1	79.8	48450	28.7	5
	7.6	76.6	34600	28.3	3
	9.1	73.3	26780	28.0	3
	10.7	69.9	21750	27.4	2
	12.2	66.5	18240	26.8	2
	15.2	59.4	13680	25.3	2
	18.3	51.6	10820	23.2	1

STERLING CRANE

with 59S Tubular Chord Tapered Tip Boom

METRIC

Boom Length (Feet)	Radius In Feet	Boom Angle Degrees	Lift Rating (Pounds)	Feet From Boom Point	Min. Load Line
90 feet cont.	70	43.0	19570	67	1
	80	32.5	16430	54	1
	90	17.4	14040	32	1
100 feet	20	80.9	106750	104	5
	25	78.0	76190	103	3
	30	75.0	58930	102	3
	35	72.0	47840	100	2
	40	69.0	40100	99	2
	50	62.7	30020	94	2
	60	56.0	23740	88	1
	70	48.8	19440	81	1
	80	40.6	16310	70	1
	90	30.8	13930	57	1
100	16.5	12050	34	1	
110 feet	22	80.6	91980	114	4
	25	79.1	76080	113	3
	30	76.4	58800	112	3
	35	73.7	47700	111	2
	40	71.0	39960	109	2
	50	65.4	29870	105	2
	60	59.5	23580	100	1
	70	53.2	19280	93	1
	80	46.4	16160	85	1
	90	38.7	13780	74	1
	100	29.4	11900	59	1
110	15.7	10380	35	1	
120 feet	23	81.0	85910	124	4
	25	80.0	75960	124	3
	30	77.5	58670	123	3
	35	75.1	47550	121	2
	40	72.6	39800	120	2
	50	67.5	29710	116	2
	60	62.2	23420	112	1
	70	56.7	19120	106	1
	80	50.8	15990	98	1
	90	44.3	13610	89	1
	100	37.0	11740	77	1
	110	28.1	10220	62	1
120	15.1	8970	37	1	
130 feet	25	80.8	75840	134	3
	30	78.5	58530	133	3
	35	76.3	47400	132	2
	40	74.0	39650	130	2
	50	69.3	29550	127	2
	60	64.5	23250	123	1
	70	59.6	18950	117	1
	80	54.3	15820	111	1
	90	48.7	13440	103	1
	100	42.5	11570	93	1
	110	35.5	10060	81	1
	120	27.0	8810	64	1
	130	14.5	7750	38	1
140 feet	27	80.6	67750	143	3
	30	79.3	58400	143	3
	35	77.3	47260	142	2
	40	75.2	39500	141	2
	50	70.9	29400	138	2
	60	66.5	23100	134	1
	70	61.9	18790	129	1
	80	57.2	15670	123	1
	90	52.2	13290	116	1
	100	46.8	11420	107	1
	110	40.9	9910	97	1
	120	34.1	8660	84	1
	130	26.0	7610	67	1
	140	13.9	6700	39	1

Boom Length (Meters)	Radius In Meters	Boom Angle Degrees	Lift Rating (Kilograms)	Meters From Boom Point	Min. Load Line
27.4 meters cont.	21.3	43.0	8880	20.4	1
	24.4	32.5	7450	16.5	1
	27.4	17.4	6370	9.8	1
30.5 meters	6.1	80.9	48420	31.7	5
	7.6	78.0	34560	31.4	3
	9.1	75.0	26730	31.1	3
	10.7	72.0	21700	30.5	2
	12.2	69.0	18190	30.2	2
	15.2	62.7	13620	28.7	2
	18.3	56.0	10770	26.8	1
	21.3	48.8	8820	24.7	1
	24.4	40.6	7400	21.3	1
	21.4	30.8	6320	17.4	1
30.5	16.5	5470	10.4	1	
33.5 meters	6.7	80.6	41720	34.7	4
	7.6	79.1	34510	34.4	3
	9.1	76.4	26670	34.1	3
	10.7	73.7	21640	33.8	2
	12.2	71.0	18130	33.2	2
	15.2	65.4	13550	32.0	2
	18.3	59.5	10700	30.5	1
	21.3	53.2	8750	28.3	1
	24.4	46.4	7330	25.9	1
	27.4	38.7	6250	22.6	1
	30.5	29.4	5400	18.0	1
33.5	15.7	4710	10.7	1	
36.6 meters	7.0	81.0	38970	37.8	4
	7.6	80.0	34460	37.8	3
	9.1	77.5	26610	37.5	3
	10.7	75.1	21570	36.9	2
	12.2	72.6	18050	36.6	2
	15.2	67.5	13480	35.4	2
	18.3	62.2	10620	34.1	1
	21.3	56.7	8670	32.3	1
	24.4	50.8	7250	29.9	1
	27.4	44.3	6170	27.1	1
	30.5	37.0	5330	23.5	1
	33.5	28.1	4640	18.9	1
36.6	15.1	4070	11.3	1	
39.6 meters	7.6	80.8	34400	40.8	3
	9.1	78.5	26550	40.5	3
	10.7	76.3	21500	40.2	2
	12.2	74.0	17990	39.6	2
	15.2	69.3	13400	38.7	2
	18.3	64.5	10550	37.5	1
	21.3	59.6	8600	35.7	1
	24.4	54.3	7180	33.8	1
	27.4	48.7	6100	31.4	1
	30.5	42.5	5250	28.3	1
	33.5	35.5	4560	24.7	1
	36.6	27.0	4000	19.5	1
	39.6	14.5	3520	11.6	1
42.7 meters	8.2	80.6	30730	43.6	3
	9.1	79.3	26490	43.6	3
	10.7	77.3	21440	43.3	2
	12.2	75.2	17920	43.0	2
	15.2	70.9	13340	42.1	2
	18.3	66.5	10480	40.8	1
	21.3	61.9	8520	39.3	1
	24.4	57.2	7110	37.5	1
	27.4	52.2	6030	35.4	1
	30.5	46.8	5180	32.6	1
	33.5	40.9	4500	29.6	1
	36.6	34.1	3930	25.6	1
	39.6	26.0	3450	20.4	1
	42.7	13.9	3040	11.9	1

STERLING CRANE

with 59S Tubular Chord Tapered Tip Boom

METRIC

Boom Length (Feet)	Radius In Feet	Boom Angle Degrees	Lift Rating (Pounds)	Feet From Boom Point	Min. Load Line
150 feet	28	80.8	63270	153	3
	30	80.1	58260	153	3
	35	78.1	47110	152	2
	40	76.2	39350	151	2
	50	72.2	29230	148	2
	60	68.1	22930	145	1
	70	63.9	18620	140	1
	80	59.6	15490	135	1
	90	55.1	13110	128	1
	100	50.3	11240	121	1
	110	45.1	9730	112	1
	120	39.4	8480	101	1
	130	32.9	7430	87	1
	140	25.1	6540	69	1
150	13.5	5760	40	1	
160 feet	30	80.7	55370	163	3
	35	78.9	46960	162	2
	40	77.0	39190	161	2
	50	73.3	29060	159	2
	60	69.6	22750	155	1
	70	65.7	18440	151	1
	80	61.7	15310	146	1
	90	57.5	12930	140	1
	100	53.2	11060	133	1
	110	48.6	9550	125	1
	120	43.6	8310	116	1
	130	38.1	7260	104	1
	140	31.9	6360	90	1
	150	24.3	5590	71	1
160	13.0	4910	41	1	
170 feet	31	80.9	47180	173	2
	35	79.5	46800	173	2
	40	77.8	39020	172	2
	50	74.3	28890	169	2
	60	70.8	22580	166	1
	70	67.2	18270	162	1
	80	63.5	15130	157	1
	90	59.7	12750	152	1
	100	55.7	10880	146	1
	110	51.5	9370	138	1
	120	47.0	8120	130	1
	130	42.2	7080	120	1
	140	36.9	6190	107	1
	150	30.9	5410	93	1
160	23.5	4740	73	1	
170	12.6	4140	43	1	
180 feet	33	80.8	41750	183	2
	35	80.1	41750	183	2
	40	78.5	38870	182	2
	50	75.2	28730	179	2
	60	71.9	22410	176	1
	70	68.5	18100	173	1
	80	65.1	14960	169	1
	90	61.5	12580	164	1
	100	57.8	10710	158	1
	110	54.0	9200	151	1
	120	49.9	7950	143	1
	130	45.6	6910	134	1
	140	41.0	6020	123	1
	150	35.9	5250	111	1
160	30.0	4580	95	1	
170	22.8	3980	75	1	
180	12.3	3450	44	1	
190 feet	34	81.0	37200	193	2
	35	80.6	37160	193	2
	40	79.1	36880	192	2

Boom Length (Meters)	Radius In Meters	Boom Angle Degrees	Lift Rating (Kilograms)	Meters From Boom Point	Min. Load line
45.7 meters	8.5	80.8	28700	46.6	3
	9.1	80.1	26430	46.6	3
	10.7	78.1	21370	46.3	2
	12.2	76.2	17850	46.0	2
	15.2	72.2	13260	45.1	2
	18.3	68.1	10400	44.2	1
	21.3	63.9	8450	42.7	1
	24.4	59.6	7030	41.1	1
	27.4	55.1	5950	39.0	1
	30.5	50.3	5100	36.9	1
	33.5	45.1	4410	34.1	1
	36.6	39.4	3850	30.8	1
	39.6	32.9	3370	26.5	1
	42.7	25.1	2970	21.0	1
45.7	13.5	2610	12.2	1	
48.8 meters	9.1	80.7	25120	49.7	3
	10.7	78.9	21300	49.4	2
	12.2	77.0	17780	49.1	2
	15.2	73.3	13180	48.5	2
	18.3	69.6	10320	47.2	1
	21.3	65.7	8360	46.0	1
	24.4	61.7	6940	44.5	1
	27.4	57.5	5870	42.7	1
	30.5	53.2	5020	40.5	1
	33.5	48.6	4330	38.1	1
	36.6	43.6	3770	35.4	1
	39.6	38.1	3290	31.7	1
	42.7	31.9	2880	27.4	1
	45.7	24.3	2540	21.6	1
48.8	13.0	2230	12.5	1	
51.8 meters	9.4	80.9	21400	52.7	2
	10.7	79.5	21230	52.7	2
	12.2	77.8	17700	52.4	2
	15.2	74.3	13100	51.5	2
	18.3	70.8	10240	50.6	1
	21.3	67.2	8290	49.4	1
	24.4	63.5	6860	47.9	1
	27.4	59.7	5780	46.3	1
	30.5	55.7	4940	44.5	1
	33.5	51.5	4250	42.1	1
	36.6	47.0	3680	39.6	1
	39.6	42.2	3210	36.6	1
	42.7	36.9	2810	32.6	1
	45.7	30.9	2450	28.3	1
48.8	23.5	2150	22.3	1	
51.8	12.6	1880	13.1	1	
54.9 meters	10.1	80.8	18940	55.8	2
	10.7	80.1	18940	55.8	2
	12.2	78.5	17630	55.5	2
	15.2	75.2	13030	54.6	2
	18.3	71.9	10170	53.6	1
	21.3	68.5	8210	52.7	1
	24.4	65.1	6790	51.5	1
	27.4	61.5	5710	50.0	1
	30.5	57.8	4860	48.2	1
	33.5	54.0	4170	46.0	1
	36.6	49.9	3610	43.6	1
	39.6	45.6	3130	40.8	1
	42.7	41.0	2730	37.5	1
	45.7	35.9	2380	33.8	1
48.8	30.0	2080	29.0	1	
51.8	22.8	1810	22.9	1	
54.9	12.3	1560	13.4	1	
57.9 meters	10.4	81.0	16870	58.8	2
	10.7	80.6	16860	58.8	2
	12.2	79.1	16730	58.5	2

STERLING CRANE

with 59S Tubular Chord Tapered Tip Boom

METRIC

Boom Length (Feet)	Radius In Feet	Boom Angle Degrees	Lift Rating (Pounds)	Feet From Boom Point	Min Load Line
190 feet	50	76.0	28560	190	2
	60	72.9	22240	187	1
	70	69.7	17920	184	1
	80	66.5	14780	180	1
	90	63.1	12400	175	1
	100	59.7	10530	169	1
	110	56.1	9010	163	1
	120	52.4	7770	156	1
	130	48.5	6720	148	1
	140	44.3	5830	138	1
	150	39.8	5060	127	1
	160	34.9	4390	114	1
	170	29.2	3800	98	1
180	22.2	3280	77	1	
190	12.0	2770	45	1	
200 feet	36	80.8	33180	203	2
	40	79.7	32920	202	2
	50	76.7	28390	200	2
	60	73.8	22060	197	1
	70	70.8	17740	194	1
	80	67.7	14600	190	1
	90	64.6	12210	186	1
	100	61.4	10340	181	1
	110	58.0	8830	175	1
	120	54.6	7580	168	1
	130	51.0	6540	161	1
	140	47.2	5650	152	1
	150	43.2	4880	142	1
160	38.8	4210	131	1	
170	34.0	3620	117	1	
180	28.4	3100	101	1	
190	21.7	2540	79	1	
200	11.7	2030	46	1	

Boom Length (Meters)	Radius In Meters	Boom Angle Degrees	Lift Rating (Kilograms)	Meters From Boom Point	Min. Load Line
57.9 meters cont.	15.2	76.0	12950	57.9	2
	18.3	72.9	10090	57.0	1
	21.3	69.7	8130	56.1	1
	24.4	66.5	6700	54.9	1
	27.4	63.1	5620	53.3	1
	30.5	59.7	4780	51.5	1
	33.5	56.1	4090	49.7	1
	36.6	52.4	3520	47.5	1
	39.6	48.5	3050	45.1	1
	42.7	44.3	2640	42.1	1
	45.7	39.8	2300	38.7	1
	48.8	34.9	1990	34.7	1
	51.8	29.2	1720	29.9	1
54.9	22.2	1490	23.5	1	
57.9	12.0	1260	13.7	1	
61.0 meters	11.0	80.8	15050	61.9	2
	12.2	79.7	14930	61.6	2
	15.2	76.7	12880	61.0	2
	18.3	73.8	10010	60.0	1
	21.3	70.8	8050	59.1	1
	24.4	67.7	6620	57.9	1
	27.4	64.6	5540	56.7	1
	30.5	61.4	4690	55.2	1
	33.5	58.0	4010	53.3	1
	36.6	54.6	3440	51.2	1
	39.6	51.0	2970	49.1	1
	42.7	47.2	2560	46.3	1
	45.7	43.2	2210	43.3	1
48.8	38.8	1910	39.9	1	
51.8	34.0	1640	35.7	1	
54.9	28.4	1410	30.8	1	
57.9	21.7	1150	24.1	1	
61.0	11.7	920	14.0	1	

Duty CYCLE RATINGS with 59S Tubular Chord Tapered Tip Boom

and "L-L" Counterweight (24,800 lbs.) (7560 kg.)

Boom Length (Feet)	Radius In Feet	Boom Angle Degrees	Duty Lift Rating (Lbs.)	Duty Circle Rating in Lbs.			Ft. From Boom Point
				Clamshell	Dragline*	Magnet*	
60 feet	14	80.5	148810	20700	17750	17350	65
	15	79.6	129860	20700	17750	17350	64
	20	74.7	78900	20700	17750	17350	63
	25	69.6	56280	20700	17750	17350	62
	30	64.5	43490	20700	17750	17350	59
	35	59.0	35260	20700	17750	17350	57
	40	53.3	29520	20700	17750	17350	53
	50	40.1	22030	19620	17750	17350	44
60	21.4	17340	15440	17340	15440	27	
70 feet	16	80.2	115160	20700	17750	17350	74
	20	76.9	78880	20700	17750	17350	74
	25	72.6	56210	20700	17750	17350	72
	30	68.3	43410	20700	17750	17350	70
	35	63.8	35170	20700	17750	17350	68
	40	59.2	29430	20700	17750	17350	65
	50	49.1	21930	19530	17750	17350	58
	60	37.0	17250	15360	17250	15360	47
70	19.8	14030	12500	14030	12500	29	

Boom Length (Meters)	Radius In Meters	Boom Angle Degrees	Duty Lift Rating (Kg.)	Duty Cycle Rating in Kg.			Meters From Boom Point
				Clamshell	Dragline*	Magnet*	
18.3 meters	4.3	80.5	67500	9390	8050	7870	65
	4.6	79.6	58900	9390	8050	7870	64
	6.1	74.7	35790	9390	8050	7870	63
	7.6	69.6	25530	9390	8050	7870	62
	9.1	64.5	19730	9390	8050	7870	59
	10.7	59.0	15990	9390	8050	7870	57
	12.2	53.3	13390	9390	8050	7870	53
	15.2	40.1	9990	8900	8050	7870	44
18.3	21.4	7870	7000	7870	7000	27	
21.3 meters	4.9	80.2	52240	9390	8050	7870	74
	6.1	76.9	35780	9390	8050	7870	74
	7.6	72.6	25500	9390	8050	7870	72
	9.1	68.3	19690	9390	8050	7870	70
	10.7	63.8	15950	9390	8050	7870	68
	12.2	59.2	13350	9390	8050	7870	65
	15.2	49.1	9950	8860	8050	7870	58
	18.3	37.0	7820	6970	7820	6970	47
21.3	19.8	6360	5670	6360	5670	29	

STERLING CRANE

with 59S Tubular Chord Tapered Tip Boom

METRIC

Boom Length (Feet)	Radius In Feet	Boom Angle Degrees	Duty Lift Rating (Lbs.)	Duty Cycle Rating in Lbs.			Ft. From Boom point
				Clamshell	Dragline*	Magnet*	
80 feet	17	80.7	103340	20700	17750	17350	84
	20	78.6	78820	20700	17750	17350	84
	25	74.9	56130	20700	17750	17350	83
	30	71.1	43310	20700	17750	17350	81
	35	67.3	35060	20700	17750	17350	79
	40	63.4	29310	20700	17750	17350	77
	50	55.0	21810	19420	17750	17350	71
	60	45.7	17130	15250	17130	15250	63
	70	34.6	13920	12390	13920	12390	51
	80	18.5	11570	10300	11570	10300	31
90 feet	19	80.5	85570	20700	-	-	94
	20	79.8	78750	20700	-	-	94
	25	76.6	56030	20700	-	-	93
	30	73.3	43190	20700	-	-	92
	35	69.9	34930	20700	-	-	90
	40	66.5	29180	20700	-	-	88
	50	59.4	21670	19300	-	-	83
	60	51.6	16990	15130	-	-	76
	70	43.0	13780	12270	-	-	67
	80	32.5	11440	10190	-	-	54
90	17.4	9650	8590	-	-	32	
100 feet	20	80.9	78680	20700	-	-	104
	25	78.0	55940	20700	-	-	103
	30	75.0	43080	20700	-	-	102
	35	72.0	34820	20700	-	-	100
	40	69.0	29060	20700	-	-	99
	50	62.7	21550	19190	-	-	94
	60	56.0	16860	15010	-	-	88
	70	48.8	13660	12160	-	-	81
	80	40.6	11320	10080	-	-	70
	90	30.8	9540	8490	-	-	57
100	16.5	8130	7240	-	-	34	
110 feet	22	80.6	67660	20700	-	-	114
	25	79.1	58820	20700	-	-	113
	30	76.4	42950	20700	-	-	112
	35	73.7	34680	20700	-	-	111
	40	71.0	28910	20700	-	-	109
	50	65.4	21400	19050	-	-	105
	60	59.5	16710	14880	-	-	100
	70	53.2	13500	12020	-	-	93
	80	46.4	11170	9940	-	-	85
	90	38.7	9390	8360	-	-	74
	100	29.4	7980	7110	-	-	59
110	15.7	6840	6090	-	-	35	
120 feet	23	81.0	63110	20700	-	-	124
	25	80.0	55700	20700	-	-	124
	30	77.5	42820	20700	-	-	123
	35	75.1	34530	20700	-	-	121
	40	72.6	28760	20700	-	-	120
	50	67.5	21240	18910	-	-	116
	60	62.2	16540	14730	-	-	112
	70	56.7	13340	11870	-	-	106
	80	50.8	11000	9800	-	-	98
	90	44.3	9220	8210	-	-	89
	100	37.0	7820	6970	-	-	77
	110	28.1	6690	5950	-	-	62
	120	15.1	5740	5110	-	-	37

Boom Length (Meters)	Radius In Meters	Boom Angle Degrees	Duty Lift Rating (Kg.)	Duty Cycle Rating in Kg.			Meters From Boom Point
				Clamshell	Dragline*	Magnet*	
24.4 meters	5.2	80.7	46880	9390	8050	7870	84
	6.1	78.6	35750	9390	8050	7870	84
	7.6	74.9	25460	9390	8050	7870	83
	9.1	71.1	19650	9390	8050	7870	81
	10.7	67.3	15900	9390	8050	7870	79
	12.2	63.4	13300	9390	8050	7870	77
	15.2	55.0	9890	8810	8050	7870	71
	18.3	45.7	7770	6920	7770	6920	63
	21.3	34.6	6310	5620	6310	5620	51
	24.4	18.5	5250	4670	5250	4670	31
27.4 meters	5.8	80.5	38810	9390	-	-	94
	6.1	79.8	35720	9390	-	-	94
	7.6	76.6	25420	9390	-	-	93
	9.1	73.3	19590	9390	-	-	92
	10.7	69.9	15840	9390	-	-	90
	12.2	66.5	13240	9390	-	-	88
	15.2	59.4	9830	8750	-	-	83
	18.3	51.6	7710	6860	-	-	76
	21.3	43.0	6250	5570	-	-	67
	24.4	32.5	5190	4620	-	-	54
27.4	17.4	4380	3900	-	-	32	
30.5 meters	6.1	80.9	35690	9390	-	-	104
	7.6	78.0	25370	9390	-	-	103
	9.1	75.0	19540	9390	-	-	102
	10.7	72.0	15790	9390	-	-	100
	12.2	69.0	13180	9390	-	-	99
	15.2	62.7	9780	8700	-	-	94
	18.3	56.0	7650	6810	-	-	88
	21.3	48.8	6200	5520	-	-	81
	24.4	40.6	5130	4570	-	-	70
	27.4	30.8	4330	3850	-	-	57
30.5	16.5	3690	3280	-	-	34	
33.5 meters	6.7	80.6	30690	9390	-	-	114
	7.6	79.1	26680	9390	-	-	113
	9.1	76.4	19480	9390	-	-	112
	10.7	73.7	15730	9390	-	-	111
	12.2	71.0	13110	9390	-	-	109
	15.2	65.4	9710	8640	-	-	105
	18.3	59.5	7580	6750	-	-	100
	21.3	53.2	6120	5450	-	-	93
	24.4	46.4	5070	4510	-	-	85
	27.4	38.7	4260	3790	-	-	74
	30.5	29.4	3620	3230	-	-	59
33.5	15.7	3100	2760	-	-	35	
36.6 meters	7.0	81.0	28630	9390	-	-	124
	7.6	80.0	25270	9390	-	-	124
	9.1	77.5	19420	9390	-	-	123
	10.7	75.1	15660	9390	-	-	121
	12.2	72.6	13050	9390	-	-	120
	15.2	67.5	9630	8580	-	-	116
	18.3	62.2	7500	6680	-	-	112
	21.3	56.7	6050	5380	-	-	106
	24.4	50.8	4990	4450	-	-	98
	27.4	44.3	4180	3720	-	-	89
	30.5	37.0	3550	3160	-	-	77
	33.5	28.1	3030	2700	-	-	62
	36.6	15.1	2600	2320	-	-	37

*Maximum Dragline and Magnet Crane Rating is increased to 19,500lbs. (8850 kilograms) when machine is equipped with GM 8V-71-N engine.

STERLING CRANE

CRANE RATING DATA

Load ratings are in pounds (kilograms) and do not exceed 75% of the load which would cause tipping with crane standing level on firm uniformly supporting surface. Safe loads depend on ground conditions, boom length, radius of operation, and proper handling, all of which must be taken into consideration by user.

Lifting is approved only in those areas for which ratings are shown in the rating chart.

"Radius in feet (meters)" is the horizontal distance at crane base level from center pin to vertical line through the center of gravity of the suspended load.

Blocks, slings, buckets, and other load carrying devices are considered part of the load. Retractable A-frame must be in fully raised position for all ratings.

Ratings in bolded areas are based on structural limitations rather than stability.

Designed and rated to comply with ANSI Code B30.5.

LOAD HOISTING DATA

METRIC

Maximum Lifting Capacity	Minimum Parts of Load Line	Maximum Hoisting Distance		
		RH Drum With Controlled Load Lowering	LH Drum With Controlled Load Lowering	LH Drum Without Controlled Load Lowering
In Pounds		Ft.	Ft.	Ft.
200000	8	72	45	55
179600	7	83	52	63
153940	6	96	60	73
128280	5	116	72	88
102630	4	145	91	110
76970	3	193	121	147
51310	2	290	182	221
25660	1	581	364	442

Maximum Lifting Capacity	Minimum Parts of Load Line	Maximum Hoisting Distance		
		RH Drum With Controlled Load Lowering	LH Drum With Controlled Load Lowering	LH Drum Without Controlled Load Lowering
In Kg		m	m	m
90720	8	21.9	13.7	16.8
81470	7	25.3	15.8	19.2
69830	6	29.3	18.3	22.3
58190	5	35.4	21.9	26.8
46550	4	44.2	27.7	33.5
34910	3	58.8	36.9	44.8
23270	2	88.4	55.5	67.4
11640	1	177.1	110.9	134.7

*Based on 1" (25.4mm) IPS rope.

*Based on 1" (25.4mm) IPS rope.

BOOM AND JIB ERECTION

METRIC

No. 9HL Boom Length	Max. Jib length
150' (45.7 m) Hammerhead	60'
200' (61.0 m) Tapered Tip	60'

No. 9HL Boom Length	Max. Jib Length
150' (45.7 m) Hammerhead	18.3 m
200' (61.0 m) Tapered Tip	18.3 m

59S HAMMERHEAD BOOM COMPOSITION

Boom Length		20 Ft. (6.1 m) 59H Inner	10 Ft. (3.1 m) 59S Center	20 Ft. (6.1 m) 59S Center	40 Ft. (12.2 m) 59S Center	20 Ft. (6.1 m) 59SH Outer Base	Hammer-head
Ft.	m						
40	12.2	1	-	-	-	1	1
50	15.3	1	1	-	-	1	1
60	18.3	1	-	1	-	1	1
70	21.3	1	1	1	-	1	1
80	24.4	1	-	-	1	1	1
90	27.9	1	1	-	1	1	1
100	30.5	1	-	1	1	1	1
110	33.5	1	1	1	1	1	1
120	36.6	1	-	-	2	1	1
130	39.6	1	1	-	2	1	1
140	42.7	1	-	1	2	1	1
150	45.7	1	1	1	2	1	1

59S TAPERED TIP BOOM COMPOSITION

Boom Length		20 Ft. (6.1 m) 59H Inner	10 Ft. (3.1 m) 59S Center	20 Ft. (6.1 m) 59S Center	40 Ft. (12.2 m) 59S Center	20 Ft. (6.1 m) 59SH Outer Base	20 Ft. (6.1 m) 59SH Tapered Tip
Ft.	m						
60	18.3	1	-	-	-	1	1
70	21.3	1	1	-	-	1	1
80	24.4	1	-	1	-	1	1
90	27.4	1	1	1	-	1	1
100	30.5	1	-	-	1	1	1
110	33.5	1	1	-	1	1	1
120	36.6	1	-	1	1	1	1
130	39.6	1	1	1	1	1	1
140	42.7	1	-	-	2	1	1
150	45.7	1	1	-	2	1	1
160	48.8	1	-	1	2	1	1
170	51.8	1	1	1	2	1	1
180	54.9	1	-	-	3	1	1
190	57.9	1	1	-	3	1	1
200	61.0	1	-	1	3	1	1

STERLING CRANE

PERFORMANCE

TRAVEL SPEED:	0.9 MPH	1.45 KPH
SWING SPEED:	3 RPM	3 RPM
SINGLE LINE SPEED:		
Crane Hoist	166 FPM	50.6 MPM
Dragline	157 FPM	47.9 MPM
Magnet	200 FPM	61.0 MPM
Third Drum (Standard Travel)	185 FPM	56.4 MPM
Third Drum (Independent Travel)	127 FPM	38.7 MPM

SINGLE LINE PULL:		
Crane Hoist	29,600 lbs. SLP	13430 kg
Dragline	31,400 lbs. SLP	14240 kg
Magnet	24,800 lbs. SLP	11250 kg
Third Drum	25,500 lbs. SLP	11570 kg

Note: In accordance with varying material situations and the Company's policy of constant product improvement these specifications subject to change without notice and without incurring responsibility to units previously sold.

WEIGHTS

7260 lifting crane with "S-S" counterweight and 40 ft. (12.19 m) boom with hammerhead:

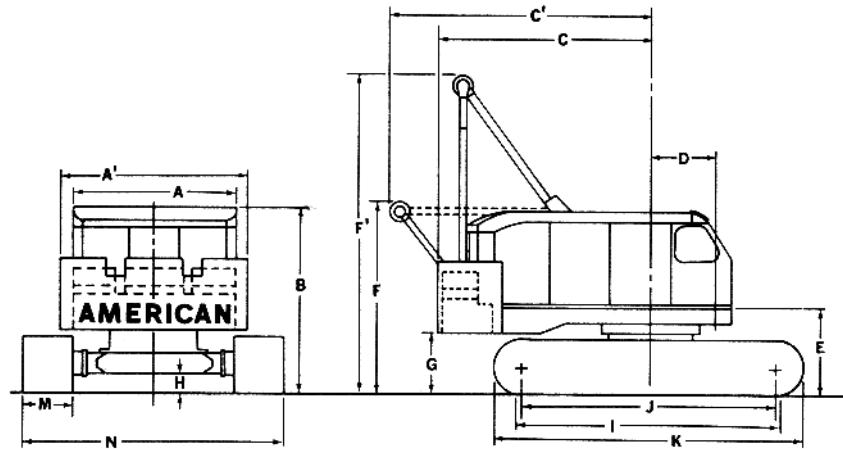
	38" (.966 m) shoes	44" (1.18 m) shoes	50" (1.271 m) shoes
	167,870#	170,460#	173,420#
	76,150 kg	77,320 kg	78,660 kg
		LBS.	KG.
Counterweight		49,700	22540
Hammerhead		2,445	1110
Outer base section		1,010	460
Inner boom section		2,315	1050
Boom stops		350	160
Outer bail assy		965	440
Crawler side frames (38" .966m shoes)		46,740	21200
Drive couplings		840	380
Crawler axles		7,900	3580
Carbody assy		11,120	5040

GROUND PRESSURES

Lifting crane with 40 ft. (12.19 m) boom with hammerhead and "S-S" counterweight.

38" (.966 m) shoes	44" (1.118 m) shoes	50" (1.271 m) shoes
10.7 PSI	9.4 PSI	8.4 PSI

STERLING CRANE



GENERAL DIMENSIONS

	Ft.	M		Ft.	M
A. Width of cab	10' 6"	3.192	J. Center to center crawler tumbler	16' 4"	4.972
A1. Width over counterweight	11' 11 1/2"	3.642	K. Overall length of crawlers	19' 6 1/2"	5.955
B. Height over cab	11' 10"	3.604	M. Width of tread shoes (standard)	38"	.966
C. Tailswing	14' 9"	4.489	M. Width of tread shoes (Optional)	44" or 50"	1.118 or
C1. Tailswing with A-frame retracted	16' 9 1/2"	5.112	N. Overall width over crawlers		1.271
D. Center of pivot to center of crane boom foot	4' 1 1/2"	1.248	Extended (with 38" shoes)	16' 8"	5.073
E. Ground to center of crane boom foot	5' 6"	1.672	Extended (with 44" shoes)	17' 2"	5.230
F. Height over A-frame in retracted position	12' 2"	3.700	Extended (with 50" shoes)	17' 8"	5.383
F1. Height over A-frame in raised position	20' 7"	8.220	N. Width with side frames removed (over crawler axles)	11' 0"	3.353
G. Ground to bottom of counterweight	3' 11"	1.189	O. Overall length of cab and counterweight	19' 8"	5.993
H. Minimum ground clearance under crawler base	14"	.355			
I. Crawler bearing length	17' 2 1/2"	5.243			