

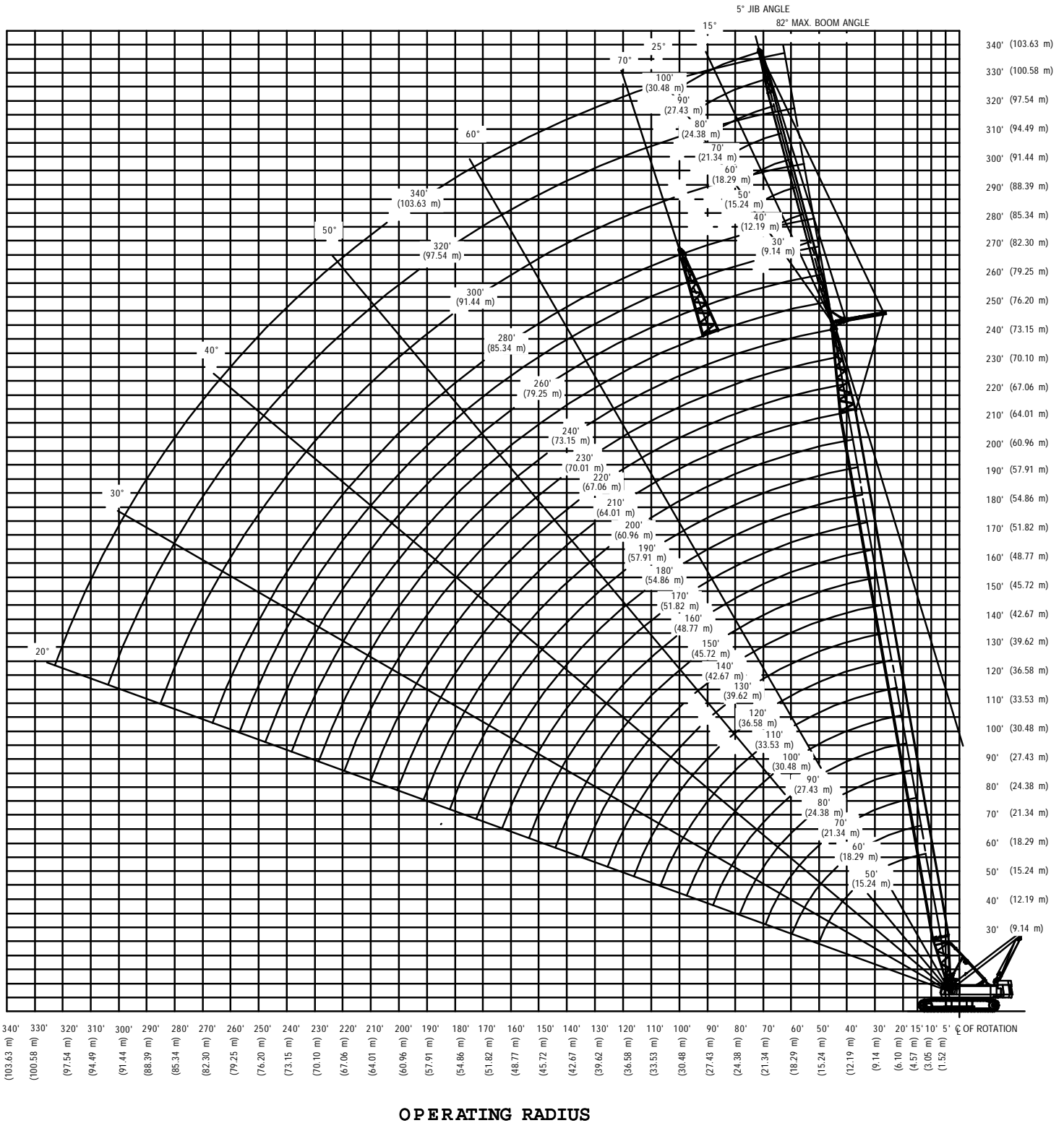
# STERLING CRANE



LIFTING CHARTS - Crawler Cranes

LINK-BELT MODEL LS-248HII - 200 TON CAPACITY

## Lift Crane Working Range



## Load Hoisting Performance

Available line speed and line pull

Line pulls are not based on wire rope strength. See wire rope chart below for maximum permissible single part of line working loads.

### Line Speeds and Pulls

Rope layer	Front Drum - 1" (25 mm) wire rope						Rear Drum - 1" (25 mm) wire rope					
	Maximum line pull		No load line speed		Full load line speed		Maximum line pull		No load line speed		Full load line speed	
	lbs.	kg	ft./min	m/min	ft./min	m/min	lbs.	kg	ft./min	m/min	ft./min	m/min
1	48,620	22 055	225	68.5	112	34.2	29,360	13 318	372	113.4	186	56.7
2	44,200	20 050	247	75.3	124	37.7	26,690	12 108	409	124.8	205	62.4
3	40,510	18 379	270	82.2	135	41.1	24,470	11 099	446	136.1	223	68.0
4	37,400	16 965	292	89.0	146	44.5	22,590	10 245	484	147.5	242	73.7
5	34,720	15 753	315	95.9	157	47.9	20,970	9 513	521	158.8	260	79.4
6	32,410	14 703	337	102.7	168	51.3	19,570	8 877	558	170.1	279	85.1
7	30,390	13 784	359	109.6	179	54.7	18,350	8 324	595	181.5	298	90.7

Rope layer	Boomhoist Drum - 7/8" (22 mm) wire rope						Third Drum - 1" (25 mm) wire rope					
	Maximum line pull		No load line speed		Full load line speed		Maximum line pull		No load line speed		Full load line speed	
	lbs.	kg	ft./min	m/min	ft./min	m/min	lbs.	kg	ft./min	m/min	ft./min	m/min
1	40,842	18 526	147	44.9	134	40.8	20,656	9 369	442	135	105	32
2	36,760	16 674	163	49.8	149	45.3	18,752	8 506	486	148	116	35
3	33,417	15 158	180	54.8	163	49.8	17,169	7 788	531	162	127	39
4	30,633	13 895	196	59.8	178	54.4	15,833	7 182	576	176	138	42
5	28,276	12 826	213	64.8	193	58.9	14,690	6 663	621	189	148	45
6	26,257	11 910	229	69.7	208	63.4	--	--	--	--	--	--
7	24,506	11 116	245	74.7	223	67.9	--	--	--	--	--	--

# STERLING CRANE

## LS-248H II Lift Crane Capacities

**Boom** - Tube ; 80" (2.03 m) wide , 68" (1.73m) deep with open throat top section. Hammerhead top section required for max. pick

**Jib** - Tube ; 32" (.81 m) wide , 24" (.61m) deep.

**Counterweights** - Refer to chart below .

**Mounting - crawler:**  
 overall length: 28' 6" (8.69 m)  
 gauge: 18' 10" (5.74 m)

Counterweights							
"A" Upper		"AB" Upper		"ABC" Upper		"A" Auxiliary Lower	
Pounds	Kilograms	Pounds	Kilograms	Pounds	Kilograms	Pounds	Kilograms
22,730	10 310	67,470	30 604	96,430	43 741	48,000	21 773

Open throat boom or boom + jib machine can **lift off** ground unassisted, without load.

Counterweight		Over End Only			
		Boom		Boom + jib	
		Feet	meters	Feet	meters
No Cwt.	Maximum	150	45.72	n/a	n/a
Cwt. "A"	Maximum	180	54.86	n/a	n/a
Cwt. "AB"	Maximum	240	73.15	n/a	n/a
Cwt. "ABC"	Maximum	270	82.30	n/a	n/a
Cwt. "ABC" + "A"	Maximum	280	85.34	240 + 100	73.15 + 30.48

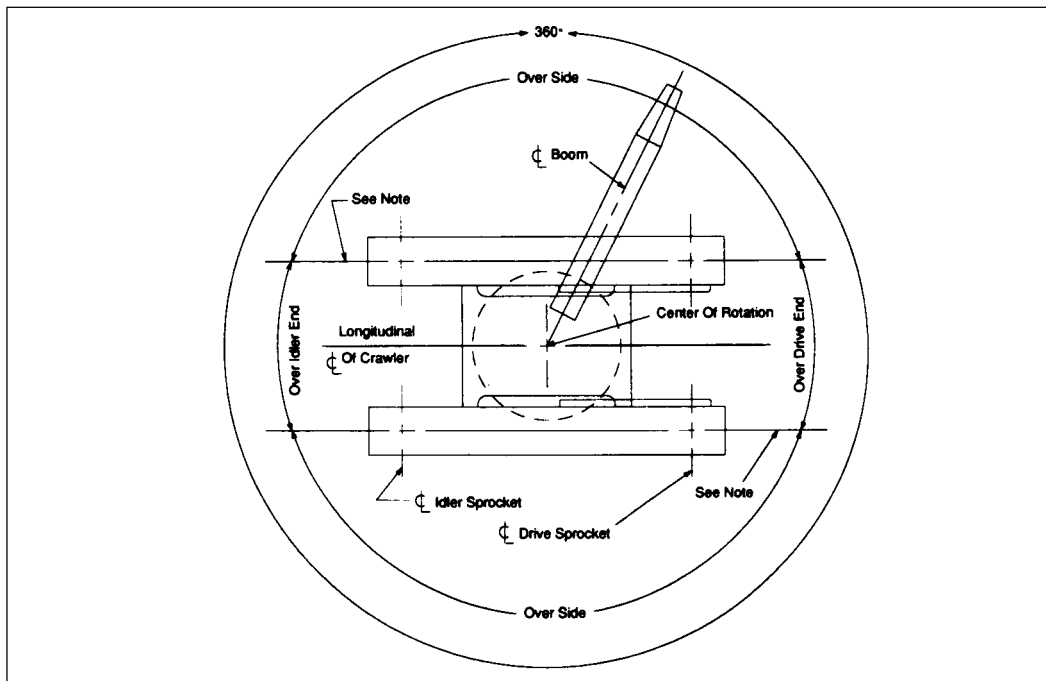
**Notes:**

1. Booms must be erected or lowered over the end with no load.
2. Crane on firm and level surface.
3. Booms 250 ft. (76.20 m) and longer require midpoint suspension pendants.

## Working Areas

**Note:** These lines determine the limiting position of any load for operation within working areas indicated.

**Caution:** This material is for reference only. Operator must refer to the Crane Rating Manual to determine allowable machine lifting capacities and operating procedures .



# STERLING CRANE

## LS-248H II Lift Crane Capacities

35 FT. (10.67 m) TUBE BOOM - HAMMERHEAD TOP SECTION								
Load Radius (ft)	Boom Angle (deg)	360° Rotation					Over End Blocked	Load Radius (ft)
		ABC+A CTWT (lb)	ABC CTWT (lb)	AB CTWT (lb)	A CTWT (lb)	0 CTWT (lb)		
10	82.0	400,000					400,000	10
11	80.8	375,000					375,000	11
12	79.0	350,000					350,000	12
13	77.2	345,000					345,000	13
14	75.4	336,100					336,100	14
15	73.5	315,000					315,000	15
16	71.6	296,300					296,300	16
17	69.7	279,700					279,700	17
18	67.8	264,800					264,800	18
19	65.8	251,300					251,300	19
20	63.8	239,100					239,100	20
25	53.1	192,000					192,000	25
30	40.1	140,100					140,100	30
35	19.9	72,700					72,700	35

50 FT. (15.24 m) TUBE BOOM - OPEN THROAT TOP SECTION								
Load Radius (ft)	Boom Angle (deg)	360° Rotation					Over End Blocked	Load Radius (ft)
		ABC+A CTWT (lb)	ABC CTWT (lb)	AB CTWT (lb)	A CTWT (lb)	0 CTWT (lb)		
12	80.0	350,000	350,000	350,000	319,600	300,300	350,000	12
13	78.8	350,000	350,000	336,700	297,000	279,000	350,000	13
14	77.6	337,100	337,100	314,500	277,300	254,100	337,100	14
15	76.4	316,200	316,200	295,000	260,000	204,700	316,200	15
16	75.3	297,700	297,700	277,700	239,800	171,100	297,700	16
17	74.1	281,200	281,200	262,300	206,000	146,800	281,200	17
18	72.9	266,400	266,400	248,400	180,400	128,300	266,400	18
19	71.7	253,000	253,000	235,900	160,300	113,900	253,000	19
20	70.5	240,900	240,900	224,600	144,100	102,200	240,900	20
25	64.3	194,100	191,500	154,500	95,100	66,900	194,100	25
30	57.7	154,800	142,900	114,900	70,200	49,000	154,800	30
35	50.6	127,300	113,400	91,000	55,100	38,100	127,800	35
40	42.7	105,300	93,700	75,000	45,000	30,800	108,000	40
50	20.9	70,200	68,800	54,700	32,200	21,500	70,200	50

60 FT. (18.29 m) TUBE BOOM - OPEN THROAT TOP SECTION								
Load Radius (ft)	Boom Angle (deg)	360° Rotation					Over End Blocked	Load Radius (ft)
		ABC+A CTWT (lb)	ABC CTWT (lb)	AB CTWT (lb)	A CTWT (lb)	0 CTWT (lb)		
12	81.6	308,300	308,300	308,300	308,300	299,800	308,300	12
13	80.7	302,300	302,300	302,300	296,500	278,700	302,300	13
14	79.7	296,500	296,500	296,500	277,000	256,300	296,400	14
15	78.7	289,500	289,500	289,500	259,800	206,500	289,600	15
16	77.8	284,200	284,200	277,400	241,300	172,600	284,200	16
17	76.8	279,200	279,200	262,100	207,300	148,100	279,200	17
18	75.8	266,200	266,200	248,300	181,600	129,500	266,200	18
19	74.8	252,900	252,900	235,800	161,400	114,900	252,900	19
20	73.8	240,800	240,800	224,500	145,100	103,200	240,800	20
25	68.8	188,100	188,100	155,200	95,800	67,600	188,100	25
30	63.6	150,500	143,400	115,500	70,800	49,600	150,500	30
35	58.1	124,800	113,900	91,500	55,700	38,700	124,900	35
40	52.3	105,800	94,200	75,500	45,500	31,300	106,300	40
50	38.9	78,000	69,300	55,200	32,700	22,100	79,900	50
60	19.0	58,400	54,200	42,900	24,900	16,400	58,400	60

# STERLING CRANE

70 FT. (21.34 m) TUBE BOOM - OPEN THROAT TOP SECTION								
Load Radius (ft)	Boom Angle (deg)	360° Rotation					Over End Blocked	Load Radius (ft)
		ABC+A CTWT (lb)	ABC CTWT (lb)	AB CTWT (lb)	A CTWT (lb)	0 CTWT (lb)		
13	82.0	286,600	286,000	286,600	286,600	278,700	286,600	13
14	81.2	281,800	281,800	281,800	277,400	261,200	281,800	14
15	80.4	277,000	277,000	277,000	260,200	210,500	277,000	15
16	79.5	272,500	272,500	272,500	244,700	176,000	272,500	16
17	78.7	268,100	268,100	262,500	210,200	151,000	268,100	17
18	77.9	262,400	262,400	248,700	184,100	132,100	262,400	18
19	77.0	253,300	253,300	236,300	163,700	117,200	253,300	19
20	76.2	241,300	241,300	225,000	147,200	105,300	241,300	20
25	71.9	194,600	193,700	156,600	97,200	69,100	194,600	25
30	67.6	161,900	144,600	116,700	71,900	50,700	162,700	30
35	63.1	128,800	114,900	92,500	56,600	39,600	137,100	35
40	58.4	106,600	95,000	76,300	46,300	32,100	117,600	40
50	48.1	78,700	70,000	55,900	33,400	22,700	89,200	50
60	35.9	61,800	54,800	43,600	25,500	17,000	71,300	60
70	17.6	50,400	44,600	35,200	20,200	13,000	57,800	70

80 FT. (24.38 m) TUBE BOOM - OPEN THROAT TOP SECTION								
Load Radius (ft)	Boom Angle (deg)	360° Rotation					Over End Blocked	Load Radius (ft)
		ABC+A CTWT (lb)	ABC CTWT (lb)	AB CTWT (lb)	A CTWT (lb)	0 CTWT (lb)		
14.4	82.0	260,100	260,100	260,100	260,100	238,700	260,100	14.4
15	81.6	257,700	257,700	257,700	257,700	211,400	257,700	15
16	80.9	253,500	253,500	253,500	244,500	176,800	253,500	16
17	80.1	249,600	249,600	249,600	210,900	151,700	249,600	17
18	79.4	245,700	245,700	245,700	184,700	132,700	245,600	18
19	78.7	241,900	241,900	235,800	164,200	117,800	241,900	19
20	77.9	238,300	238,300	224,600	147,700	105,800	238,300	20
25	74.2	194,300	194,000	156,900	97,500	69,300	194,300	25
30	70.5	162,100	144,800	116,800	72,100	50,900	162,400	30
35	66.6	128,900	115,000	92,600	56,700	39,700	135,700	35
40	62.7	106,700	95,100	76,400	46,500	32,300	116,500	40
50	54.3	78,800	70,100	56,000	33,500	22,800	88,600	50
60	44.8	61,900	54,900	43,700	25,700	17,100	71,400	60
70	33.5	50,600	44,800	35,400	20,400	13,200	59,000	70
80	16.5	42,400	37,400	29,400	16,500	10,400	48,400	80

90 FT. (27.43 m) TUBE BOOM - OPEN THROAT TOP SECTION								
Load Radius (ft)	Boom Angle (deg)	360° Rotation					Over End Blocked	Load Radius (ft)
		ABC+A CTWT (lb)	ABC CTWT (lb)	AB CTWT (lb)	A CTWT (lb)	0 CTWT (lb)		
15.8	82.0	239,200	239,200	239,200	239,200	183,300	239,200	15.8
16	81.9	238,500	238,500	238,500	238,500	177,400	238,500	16
17	81.2	233,500	233,500	233,500	211,400	152,200	233,500	17
18	80.6	230,000	230,000	230,000	185,200	133,100	230,000	18
19	79.9	226,600	226,600	226,600	164,600	118,100	226,600	19
20	79.3	223,400	223,400	223,400	148,000	106,100	223,300	20
25	76.0	193,900	193,900	157,100	97,700	69,500	193,900	25
30	72.7	160,800	144,900	116,900	72,200	51,000	160,900	30
35	69.4	129,000	115,100	92,700	56,800	39,800	134,300	35
40	65.9	106,700	95,100	76,400	46,500	32,300	115,500	40
50	58.7	78,800	70,100	56,000	33,500	22,800	88,400	50
60	50.9	61,900	54,900	43,700	25,700	17,100	71,000	60
70	42.2	50,600	44,800	35,400	20,400	13,300	59,000	70
80	31.5	42,500	37,500	29,500	16,600	10,500	49,400	80
90	15.5	36,300	31,900	24,900	13,600	8,300	41,300	90

# STERLING CRANE

## LS-248H II Lift Crane Capacities

100 FT. (30.48 m) TUBE BOOM - OPEN THROAT TOP SECTION								
Load Radius (ft)	Boom Angle (deg)	360° Rotation					Over End Blocked	Load Radius (ft)
		ABC+A CTWT (lb)	ABC CTWT (lb)	AB CTWT (lb)	A CTWT (lb)	0 CTWT (lb)	ABC+A CTWT (lb)	
17.2	82.0	219,200	219,200	219,200	206,100	148,500	219,200	17.2
18	81.5	216,700	216,700	216,700	185,500	133,500	216,700	18
19	81.0	213,800	213,800	213,800	164,900	118,500	213,800	19
20	80.4	210,800	210,800	210,800	148,200	106,400	210,800	20
25	77.5	193,500	193,500	157,200	97,800	69,600	193,500	25
30	74.5	159,400	144,900	117,000	72,300	51,000	159,400	30
35	71.5	129,000	115,100	92,700	56,800	39,800	133,200	35
40	68.5	106,700	95,100	76,400	46,500	32,300	114,500	40
50	62.1	78,700	70,000	56,000	33,500	22,800	88,400	50
60	55.4	61,900	54,900	43,600	25,600	17,100	70,500	60
70	48.1	50,600	44,800	35,400	20,300	13,200	58,900	70
80	39.9	42,500	37,500	29,400	16,500	10,400	49,500	80
90	29.9	36,400	32,000	24,900	13,700	8,300	42,000	90
100	14.7	31,500	27,600	21,400	11,300	6,600	35,600	100

110 FT. (33.53 m) TUBE BOOM - OPEN THROAT TOP SECTION								
Load Radius (ft)	Boom Angle (deg)	360° Rotation					Over End Blocked	Load Radius (ft)
		ABC+A CTWT (lb)	ABC CTWT (lb)	AB CTWT (lb)	A CTWT (lb)	0 CTWT (lb)	ABC+A CTWT (lb)	
18.6	82.0	201,100	201,100	201,100	173,100	124,500	201,100	18.6
19	81.8	200,000	200,000	200,000	165,100	118,700	200,000	19
20	81.3	197,500	197,500	197,500	148,500	106,600	197,500	20
25	78.6	185,300	185,300	157,300	97,900	69,700	185,400	25
30	75.9	158,100	144,900	117,000	72,300	51,000	158,200	30
35	73.2	128,900	115,000	92,700	56,800	39,800	132,100	35
40	70.5	106,600	95,000	76,300	46,400	32,200	113,500	40
50	64.9	78,600	69,900	55,900	33,400	22,700	87,700	50
60	59.0	61,800	54,800	43,500	25,500	17,000	69,900	60
70	52.7	50,500	44,700	35,300	20,200	13,100	58,700	70
80	45.8	42,400	37,400	29,300	16,400	10,300	49,300	80
90	38.0	36,300	31,900	24,900	13,600	8,200	42,000	90
100	28.4	31,500	27,600	21,300	11,300	6,500	36,200	100
110	14.0	27,600	24,100	18,500	9,400	5,100	31,000	110

120 FT. (36.58 m) TUBE BOOM - OPEN THROAT TOP SECTION								
Load Radius (ft)	Boom Angle (deg)	360° Rotation					Over End Blocked	Load Radius (ft)
		ABC+A CTWT (lb)	ABC CTWT (lb)	AB CTWT (lb)	A CTWT (lb)	0 CTWT (lb)	ABC+A CTWT (lb)	
20.0	82.0	186,200	186,200	186,200	148,900	106,900	186,200	20.0
25	79.6	173,900	173,900	157,300	97,900	69,800	173,900	25
30	77.1	156,900	144,900	117,000	72,200	51,000	156,900	30
35	74.7	128,900	115,000	92,600	56,700	39,700	131,100	35
40	72.2	106,500	94,900	76,300	46,300	32,100	112,600	40
50	67.1	78,500	69,800	55,800	33,200	22,600	86,900	50
60	61.8	61,600	54,600	43,400	25,400	16,800	69,300	60
70	56.2	50,300	44,500	35,100	20,100	13,000	58,300	70
80	50.3	42,200	37,200	29,200	16,300	10,200	49,000	80
90	43.7	36,100	31,800	24,700	13,400	8,100	41,800	90
100	36.3	31,400	27,500	21,200	11,200	6,400	36,100	100
110	27.2	27,500	24,000	18,400	9,400	5,100	31,400	110
120	13.4	24,300	21,100	16,000	7,800	3,900	27,500	120

# STERLING CRANE

130 FT. (39.62 m) TUBE BOOM - OPEN THROAT TOP SECTION								
Load Radius (ft)	Boom Angle (deg)	360° Rotation					Over End Blocked	Load Radius (ft)
		ABC+A CTWT (lb)	ABC CTWT (lb)	AB CTWT (lb)	A CTWT (lb)	0 CTWT (lb)	ABC+A CTWT (lb)	
21.4	82.0	171,200	171,200	171,200	130,500	93,500	171,200	21.4
25	80.4	164,400	164,400	157,300	97,900	69,800	164,400	25
30	78.1	155,800	144,800	116,900	72,200	51,000	155,700	30
35	75.9	128,800	114,900	92,500	56,600	39,600	130,200	35
40	73.6	106,400	94,800	76,100	46,200	32,000	111,800	40
50	68.9	78,400	69,700	55,600	33,100	22,400	86,300	50
60	64.1	61,500	54,500	43,200	25,200	16,700	68,700	60
70	59.1	50,200	44,300	35,000	19,900	12,800	57,800	70
80	53.8	42,100	37,100	29,000	16,100	10,000	48,600	80
90	48.2	36,000	31,600	24,600	13,300	7,900	41,500	90
100	41.9	31,200	27,300	21,100	11,000	6,300	35,900	100
110	34.8	27,400	23,900	18,300	9,200	4,900	31,300	110
120	26.1	24,200	21,100	15,900	7,700	3,800	28,000	120
130	12.9	21,600	18,600	13,900	6,400	2,800	24,100	130

140 FT. (42.67 m) TUBE BOOM - OPEN THROAT TOP SECTION								
Load Radius (ft)	Boom Angle (deg)	360° Rotation					Over End Blocked	Load Radius (ft)
		ABC+A CTWT (lb)	ABC CTWT (lb)	AB CTWT (lb)	A CTWT (lb)	0 CTWT (lb)	ABC+A CTWT (lb)	
22.8	82.0	158,800	158,800	158,800	115,900	82,900	158,800	22.8
25	81.1	155,200	155,200	155,200	97,900	69,800	155,200	25
30	79.0	146,000	144,800	116,900	72,100	50,900	146,000	30
35	76.9	128,700	114,800	92,400	56,500	39,500	129,300	35
40	74.8	106,300	94,700	76,000	46,100	31,900	111,000	40
50	70.5	78,200	69,500	55,500	33,000	22,300	85,600	50
60	66.1	61,300	54,300	43,100	25,000	16,500	68,200	60
70	61.5	50,000	44,200	34,800	19,700	12,600	57,200	70
80	56.8	41,900	36,900	28,800	16,000	9,800	48,100	80
90	51.7	35,800	31,400	24,400	13,100	7,700	41,100	90
100	46.3	31,000	27,200	20,900	10,900	6,100	35,600	100
110	40.3	27,200	23,700	18,100	9,100	4,800	31,100	110
120	33.5	24,100	20,900	15,800	7,600	3,700	28,000	120
130	25.2	21,400	18,500	13,800	6,300	2,700	24,500	130
140	12.4	19,200	16,500	12,100	5,200		21,200	140

150 FT. (45.72 m) TUBE BOOM - OPEN THROAT TOP SECTION								
Load Radius (ft)	Boom Angle (deg)	360° Rotation					Over End Blocked	Load Radius (ft)
		ABC+A CTWT (lb)	ABC CTWT (lb)	AB CTWT (lb)	A CTWT (lb)	0 CTWT (lb)	ABC+A CTWT (lb)	
24.2	82.0	146,000	146,000	146,000	104,000		146,000	24.2
25	81.7	144,800	144,800	144,800	97,900		144,800	25
30	79.7	138,100	138,100	116,800	72,000		138,100	30
35	77.8	128,500	114,700	92,300	56,400		128,500	35
40	75.8	106,200	94,600	75,900	45,900		110,200	40
50	71.9	78,100	69,300	55,300	32,800		84,900	50
60	67.8	61,100	54,100	42,900	24,900		67,600	60
70	63.6	49,800	44,000	34,600	19,600		56,800	70
80	59.2	41,700	36,700	28,600	15,800		47,700	80
90	54.7	35,600	31,200	24,200	12,900		40,700	90
100	49.8	30,800	27,000	20,700	10,700		35,200	100
110	44.6	27,000	23,500	17,900	8,900		30,800	110
120	38.9	23,900	20,700	15,600	7,400		27,800	120
130	32.3	21,300	18,400	13,700	6,100		24,500	130
140	24.3	19,000	16,300	12,000	5,000		21,500	140
150	12.0	17,100	14,600	10,500	4,100		18,700	150

# STERLING CRANE

## LS-248H II Lift Crane Capacities

160 FT. (48.77 m) TUBE BOOM - OPEN THROAT TOP SECTION								
Load Radius (ft)	Boom Angle (deg)	360° Rotation					Over End Blocked	Load Radius (ft)
		ABC+A CTWT (lb)	ABC CTWT (lb)	AB CTWT (lb)	A CTWT (lb)	0 CTWT (lb)		
25.6	82.0	135,700	135,700	135,700	94,200		135,700	25.6
30	80.4	130,400	130,400	116,700	71,900		130,400	30
35	78.6	124,600	114,500	92,200	56,300		124,600	35
40	76.7	106,000	94,400	75,700	45,800		109,600	40
50	73.0	77,900	69,200	55,100	32,600		84,300	50
60	69.2	60,900	53,900	42,700	24,700		67,000	60
70	65.4	49,600	43,800	34,400	19,300		56,200	70
80	61.3	41,500	36,500	28,400	15,500		47,200	80
90	57.2	35,400	31,000	24,000	12,700		40,300	90
100	52.8	30,600	26,700	20,500	10,400		34,800	100
110	48.2	26,800	23,300	17,700	8,600		30,400	110
120	43.2	23,700	20,500	15,400	7,200		27,600	120
130	37.6	21,100	18,100	13,400	5,900		24,300	130
140	31.3	18,800	16,100	11,800	4,800		21,400	140
150	23.5	16,900	14,400	10,400	3,900		18,900	150
160	11.6	15,200	12,900	9,100	3,100		16,500	160

170 FT. (51.82 m) TUBE BOOM - OPEN THROAT TOP SECTION								
Load Radius (ft)	Boom Angle (deg)	360° Rotation					Over End Blocked	Load Radius (ft)
		ABC+A CTWT (lb)	ABC CTWT (lb)	AB CTWT (lb)	A CTWT (lb)	0 CTWT (lb)		
27.0	82.0	126,100	126,100	126,100	86,000		126,100	27.0
30	81.0	122,900	122,900	116,600	71,800		122,900	30
35	79.2	116,100	114,400	92,000	56,100		116,100	35
40	77.5	105,900	94,300	75,600	45,600		108,900	40
50	74.0	77,700	69,000	54,900	32,400		83,700	50
60	70.5	60,700	53,700	42,500	24,500		66,400	60
70	66.9	49,400	43,600	34,200	19,100		55,700	70
80	63.2	41,300	36,300	28,200	15,300		46,700	80
90	59.3	35,200	30,800	23,700	12,500		39,800	90
100	55.3	30,400	26,500	20,200	10,200		34,400	100
110	51.1	26,600	23,100	17,400	8,400		30,100	110
120	46.6	23,500	20,300	15,200	6,900		27,200	120
130	41.8	20,800	17,900	13,200	5,700		24,000	130
140	36.5	18,600	15,900	11,600	4,600		21,200	140
150	30.3	16,700	14,200	10,200	3,700		18,800	150
160	22.8	15,000	12,700	8,900	2,900		16,600	160
170	11.3	13,500	11,300	7,800	2,200		14,400	170

180 FT. (54.86 m) TUBE BOOM - OPEN THROAT TOP SECTION								
Load Radius (ft)	Boom Angle (deg)	360° Rotation					Over End Blocked	Load Radius (ft)
		ABC+A CTWT (lb)	ABC CTWT (lb)	AB CTWT (lb)	A CTWT (lb)	0 CTWT (lb)		
28.3	82.0	115,900	115,900	115,900	78,900		115,900	28.3
30	81.5	114,200	114,200	114,200	71,700		114,200	30
35	79.9	109,500	109,500	91,900	56,000		109,500	35
40	78.2	104,900	94,100	75,400	45,500		104,900	40
50	75.0	77,500	68,800	54,700	32,200		83,100	50
60	71.6	60,500	53,500	42,300	24,300		65,900	60
70	68.2	49,200	43,300	34,000	18,900		55,200	70
80	64.8	41,000	36,000	28,000	15,100		46,200	80
90	61.2	34,900	30,600	23,500	12,200		39,400	90
100	57.5	30,200	26,300	20,000	10,000		34,000	100
110	53.6	26,400	22,900	17,200	8,200		29,600	110
120	49.6	23,200	20,000	14,900	6,700		26,900	120
130	45.3	20,600	17,700	13,000	5,500		23,600	130
140	40.6	18,400	15,700	11,400	4,400		20,900	140
150	35.4	16,500	14,000	10,000	3,500		18,500	150
160	29.5	14,800	12,500	8,700	2,700		16,400	160
170	22.1	13,300	11,200	7,600	2,000		14,500	170
180	11.0	12,000	9,900	6,600			12,600	180



# STERLING CRANE

190 FT. (57.91 m) TUBE BOOM - OPEN THROAT TOP SECTION								
Load Radius (ft)	Boom Angle (deg)	360° Rotation					Over End Blocked	Load Radius (ft)
		ABC+A CTWT (lb)	ABC CTWT (lb)	AB CTWT (lb)	A CTWT (lb)	0 CTWT (lb)	ABC+A CTWT (lb)	
29.7	82.0	107,100	107,100	107,100			107,100	29.7
30	81.9	107,100	107,100	107,100			107,100	30
35	80.4	103,100	103,100	91,700			103,100	35
40	78.9	98,900		75,200			98,900	40
50	75.8	77,300	68,600	54,500			82,600	50
60	72.6	60,300	53,300	42,100			65,400	60
70	69.4	48,900	43,100	33,700			54,700	70
80	66.2	40,800	35,800	27,800			45,700	80
90	62.8	34,700	30,300	23,300			38,900	90
100	59.4	29,900	26,000	19,800			33,500	100
110	55.8	26,100	22,600	17,000			29,500	110
120	52.1	23,000	19,800	14,700			26,500	120
130	48.2	20,400	17,500	12,800			23,300	130
140	44.0	18,200	15,500	11,100			20,600	140
150	39.4	16,200	13,700	9,700			18,200	150
160	34.4	14,600	12,300	8,500			16,100	160
170	28.7	13,100	10,900	7,400			14,300	170
180	21.5	11,800	9,800	6,400			12,600	180
190	10.7	10,600	8,700	5,500			10,900	190

200 FT. (60.96 m) TUBE BOOM - OPEN THROAT TOP SECTION								
Load Radius (ft)	Boom Angle (deg)	360° Rotation					Over End Blocked	Load Radius (ft)
		ABC+A CTWT (lb)	ABC CTWT (lb)	AB CTWT (lb)	A CTWT (lb)	0 CTWT (lb)	ABC+A CTWT (lb)	
31.1	82.0	95,300	95,300	95,300			95,300	31.1
35	80.9	94,100	94,100	91,600			94,100	35
40	79.4	93,100	93,100	75,100			93,100	40
50	76.5	77,100	68,400	54,300			82,000	50
60	73.5	60,100	53,100	41,800			64,800	60
70	70.5	48,700	42,900	33,500			54,200	70
80	67.4	40,600	35,600	27,500			45,200	80
90	64.3	34,400	30,100	23,000			38,400	90
100	61.1	29,700	25,800	19,500			33,100	100
110	57.8	25,900	22,400	16,700			29,400	110
120	54.3	22,700	19,600	14,400			26,100	120
130	50.7	20,100	17,200	12,500			22,900	130
140	46.9	17,900	15,200	10,900			20,200	140
150	42.8	16,000	13,500	9,500			17,900	150
160	38.4	14,300	12,000	8,200			15,800	160
170	33.5	12,900	10,700	7,200			14,000	170
180	27.9	11,600	9,500	6,200			12,400	180
190	21.0	10,400	8,500	5,300			10,900	190
200	10.4	9,400	7,500	4,500			9,400	200

210 FT. (64.01 m) TUBE BOOM - OPEN THROAT TOP SECTION								
Load Radius (ft)	Boom Angle (deg)	360° Rotation					Over End Blocked	Load Radius (ft)
		ABC+A CTWT (lb)	ABC CTWT (lb)	AB CTWT (lb)	A CTWT (lb)	0 CTWT (lb)	ABC+A CTWT (lb)	
32.5	82.0	83,900	83,900	83,900			83,900	32.5
35	81.3	83,900	83,900	83,900			83,900	35
40	79.9	82,800	82,800	74,900			82,600	40
50	77.1	76,900	68,200	54,100			79,600	50
60	74.3	59,900	52,900	41,600			64,300	60
70	71.5	48,500	42,600	33,300			53,700	70
80	68.6	40,300	35,300	27,300			44,800	80
90	65.6	34,200	29,800	22,800			38,000	90
100	62.6	29,400	25,500	19,300			32,700	100
110	59.5	25,600	22,100	16,500			29,400	110
120	56.2	22,500	19,300	14,200			25,700	120
130	52.9	19,900	16,900	12,200			22,500	130
140	49.4	17,700	15,000	10,600			19,800	140
150	45.7	15,700	13,200	9,200			17,500	150
160	41.7	14,100	11,800	8,000			15,500	160
170	37.4	12,600	10,400	6,900			13,700	170
180	32.7	11,400	9,300	6,000			12,100	180
190	27.2	10,200	8,300	5,100			10,700	190
200	20.5	9,200	7,300	4,300			9,300	200
210	10.1	8,000	6,400	3,600			8,000	210

# STERLING CRANE

## LS-248H II Lift Crane Capacities

220 FT. (67.06 m) TUBE BOOM - OPEN THROAT TOP SECTION								
Load Radius (ft)	Boom Angle (deg)	360° Rotation					Over End Blocked	Load Radius (ft)
		ABC+A CTWT (lb)	ABC CTWT (lb)	AB CTWT (lb)	A CTWT (lb)	0 CTWT (lb)		
33.9	82.0	75,200	75,200	75,200			75,200	33.9
35	81.7	75,200	75,200	75,200			75,000	35
40	80.4	74,300	74,300	74,300			74,300	40
50	77.7	72,400	68,000	53,900			73,100	50
60	75.1	59,600	52,700	41,400			63,800	60
70	72.3	48,200	42,400	33,000			53,200	70
80	69.6	40,100	35,100	27,000			44,300	80
90	66.8	34,000	29,600	22,500			37,500	90
100	63.9	29,200	25,300	19,000			32,200	100
110	61.0	25,400	21,900	16,200			29,000	110
120	58.0	22,200	19,000	13,900			25,200	120
130	54.8	19,600	16,700	12,000			22,100	130
140	51.6	17,400	14,700	10,400			19,400	140
150	48.2	15,500	13,000	9,000			17,100	150
160	44.6	13,800	11,500	7,700			15,100	160
170	40.7	12,400	10,200	6,700			13,300	170
180	36.6	11,100	9,000	5,700			11,800	180
190	31.9	10,000	8,000	4,900			10,400	190
200	26.6	8,900	7,100	4,100			9,100	200
210	20.0	7,900	6,200	3,400			7,900	210
220	9.9	6,600	5,400	2,700			6,600	220

230 FT. (70.10 m) TUBE BOOM - OPEN THROAT TOP SECTION								
Load Radius (ft)	Boom Angle (deg)	360° Rotation					Over End Blocked	Load Radius (ft)
		ABC+A CTWT (lb)	ABC CTWT (lb)	AB CTWT (lb)	A CTWT (lb)	0 CTWT (lb)		
35.3	82.0	68,100	68,100	68,100			68,100	35.3
40	80.8	67,200	67,200	67,100			67,200	40
50	78.3	65,600	65,600	53,700			65,600	50
60	75.7	59,400	52,400	41,200			61,900	60
70	73.1	48,000	42,200	32,800			52,700	70
80	70.5	39,800	34,800	26,800			43,800	80
90	67.8	33,700	29,300	22,300			37,100	90
100	65.1	28,900	25,000	18,800			31,700	100
110	62.4	25,100	21,600	16,000			28,600	110
120	59.5	22,000	18,800	13,700			24,800	120
130	56.6	19,300	16,400	11,700			21,600	130
140	53.5	17,100	14,400	10,100			19,000	140
150	50.4	15,200	12,700	8,700			16,700	150
160	47.0	13,600	11,200	7,500			14,700	160
170	43.5	12,100	9,900	6,400			13,000	170
180	39.8	10,800	8,800	5,500			11,400	180
190	35.7	9,700	7,700	4,600			10,000	190
200	31.2	8,700	6,800	3,800			8,800	200
210	26.0	7,600	6,000	3,200			7,600	210
220	19.6	6,500	5,200	2,500			6,500	220
230	9.7	5,400	4,500				5,400	230

# STERLING CRANE

240 FT. (73.15 m) TUBE BOOM - OPEN THROAT TOP SECTION								
Load Radius (ft)	Boom Angle (deg)	360° Rotation					Over End Blocked	Load Radius (ft)
		ABC+A CTWT (lb)	ABC CTWT (lb)	AB CTWT (lb)	A CTWT (lb)	0 CTWT (lb)	ABC+A CTWT (lb)	
36.7	82.0	61,200	61,200	61,200			61,200	36.7
40	81.2	60,400	60,400	60,400			60,400	40
50	78.8	57,800	57,800	53,500			57,700	50
60	76.3	54,900	52,200	40,900			54,800	60
70	73.9	47,800	41,900	32,500			49,600	70
80	71.4	39,600	34,600	26,500			43,400	80
90	68.8	33,400	29,100	22,000			36,600	90
100	66.2	28,700	24,800	18,500			31,300	100
110	63.6	24,800	21,300	15,700			27,700	110
120	60.9	21,700	18,500	13,400			24,400	120
130	58.1	19,100	16,200	11,500			21,200	130
140	55.3	16,900	14,200	9,800			18,600	140
150	52.3	15,000	12,500	8,400			16,300	150
160	49.2	13,300	11,000	7,200			14,300	160
170	46.0	11,900	9,700	6,100			12,600	170
180	42.6	10,600	8,500	5,200			11,000	180
190	38.9	9,400	7,500	4,300			9,700	190
200	34.9	8,400	6,600	3,600			8,400	200
210	30.5	7,300	5,700	2,900			7,300	210
220	25.4	6,200	5,000	2,300			6,200	220
230	19.1	5,200	4,200				5,200	230
240	9.5	4,200	3,600				4,200	240

250 FT. (76.20 m) TUBE BOOM - OPEN THROAT TOP SECTION								
Load Radius (ft)	Boom Angle (deg)	360° Rotation					Over End Blocked	Load Radius (ft)
		ABC+A CTWT (lb)	ABC CTWT (lb)	AB CTWT (lb)	A CTWT (lb)	0 CTWT (lb)	ABC+A CTWT (lb)	
38.1	82.0	53,900	53,900				53,900	38.1
40	81.6	53,900	53,900				53,900	40
50	79.2	52,500	52,500				52,300	50
60	76.9	49,600	49,600				49,700	60
70	74.5	45,200	41,700				45,300	70
80	72.1	39,300	34,300				41,100	80
90	69.7	33,100	28,800				36,300	90
100	67.2	28,300	24,500				31,100	100
110	64.7	24,500	21,000				26,500	110
120	62.2	21,400	18,200				23,600	120
130	59.5	18,700	15,800				21,100	130
140	56.8	16,500	13,800				18,600	140
150	54.1	14,600	12,100				15,900	150
160	51.2	12,900	10,600				13,700	160
170	48.2	11,500	9,300				11,700	170
180	45.0	9,900	8,100				9,900	180
190	41.7	8,400	7,100				8,400	190
200	38.1	8,000	6,200				8,000	200
210	34.2	7,100	5,300				7,500	210
220	29.9	6,200	4,600				6,500	220
230	24.9	5,300	3,900				5,300	230
240	18.8	3,300	3,200				3,300	240
250	9.3	2,800	2,600				2,800	250

# STERLING CRANE

260 FT. (79.25 m) TUBE BOOM - OPEN THROAT TOP SECTION								
Load Radius (ft)	Boom Angle (deg)	360° Rotation					Over End Blocked	Load Radius (ft)
		ABC+A CTWT (lb)	ABC CTWT (lb)	AB CTWT (lb)	A CTWT (lb)	0 CTWT (lb)		
39.5	82.0	48,900	48,900				48,900	39.5
40	81.9	48,900	48,900				48,900	40
50	79.6	47,700	47,700				47,700	50
60	77.4	45,000	45,000				45,000	60
70	75.1	41,100	41,100				41,100	70
80	72.8	37,500	34,000				37,500	80
90	70.5	32,900	28,500				33,800	90
100	68.2	28,100	24,200				30,800	100
110	65.8	24,200	20,700				25,000	110
120	63.3	21,100	17,900				23,300	120
130	60.8	18,500	15,500				21,600	130
140	58.3	16,200	13,500				19,900	140
150	55.6	14,300	11,800				17,700	150
160	52.9	12,700	10,300				15,800	160
170	50.1	11,200	9,000				14,100	170
180	47.2	9,900	7,900				12,600	180
190	44.1	8,800	6,800				11,200	190
200	40.8	7,800	5,900				10,000	200
210	37.3	6,800	5,100				8,900	210
220	33.5	6,000	4,300				7,800	220
230	29.3	5,200	3,600				6,800	230
240	24.4	4,500	3,000				5,800	240
250	18.4	3,800	2,400				4,800	250
260	9.1	3,200					3,500	260

270 FT. (82.30 m) TUBE BOOM - OPEN THROAT TOP SECTION								
Load Radius (ft)	Boom Angle (deg)	360° Rotation					Over End Blocked	Load Radius (ft)
		ABC+A CTWT (lb)	ABC CTWT (lb)	AB CTWT (lb)	A CTWT (lb)	0 CTWT (lb)		
40.9	82.0	44,400	44,400				44,400	40.9
50	80.0	43,300	43,300				43,500	50
60	77.9	40,900	40,900				40,800	60
70	75.7	37,300	37,300				37,200	70
80	73.5	33,800	33,800				33,900	80
90	71.3	30,800	28,300				31,000	90
100	69.0	27,000	23,900				26,700	100
110	66.7	24,000	20,500				24,700	110
120	64.4	20,800	17,600				22,500	120
130	62.0	18,200	15,300				20,600	130
140	59.6	16,000	13,300				19,000	140
150	57.1	14,100	11,600				17,300	150
160	54.5	12,400	10,100				16,000	160
170	51.9	10,900	8,800				14,400	170
180	49.1	9,700	7,600				12,900	180
190	46.2	8,500	6,600				11,600	190
200	43.2	7,500	5,600				10,400	200
210	40.0	6,600	4,800				9,300	210
220	36.6	5,700	4,000				8,300	220
230	32.9	4,900	3,400				7,400	230
240	28.7	4,200	2,700				6,600	240
250	24.0	3,600	2,100				5,800	250
260	18.0	3,000					5,000	260
270	8.9	2,400					2,400	270

# STERLING CRANE

280 FT. (85.34 m) TUBE BOOM - OPEN THROAT TOP SECTION								
Load Radius (ft)	Boom Angle (deg)	360° Rotation					Over End Blocked	Load Radius (ft)
		ABC+A CTWT (lb)	ABC CTWT (lb)	AB CTWT (lb)	A CTWT (lb)	0 CTWT (lb)	ABC+A CTWT (lb)	
42.3	82.0	40,400					40,400	42.3
50	80.4	39,600					39,600	50
60	78.3	37,200					37,200	60
70	76.2	33,900					34,000	70
80	74.1	30,900					30,800	80
90	72.0	26,700					26,700	90
100	69.8	24,300					24,400	100
110	67.6	22,400					22,300	110
120	65.4	20,400					20,400	120
130	63.1	17,900					18,600	130
140	60.8	15,700					17,200	140
150	58.4	13,800					15,700	150
160	56.0	12,100					14,500	160
170	53.5	10,700					13,500	170
180	50.9	9,400					12,400	180
190	48.2	8,200					11,300	190
200	45.4	7,200					10,100	200
210	42.4	6,300					9,000	210
220	39.3	5,400					8,000	220
230	35.9	4,700					7,100	230
240	32.3	4,000					6,300	240
250	28.2	3,300					5,600	250
260	23.5	2,700					4,900	260
270	17.7	2,200					3,900	270
280	8.8							280

## Notes: Lift Crane Capacities

### General:

- Rated lifting capacities in pounds as shown on lift charts pertain to the crane as originally manufactured and normally equipped. Modifications to the crane or use of optional equipment other than that specified can result in a reduction of capacity.
- Construction equipment can be dangerous if improperly operated or maintained. Operation and maintenance of the crane must be in compliance with the information in the Operator's, Parts and Safety Manuals supplied with the crane. If these manuals are missing, order replacements through the distributor.
- The operator and other personnel associated with the crane shall read and fully understand the latest applicable American National Standards Institute (ANSI) safety standards for cranes.
- The maximum allowable lifting capacities are based on crane standing level on firm supporting surface.
- All capacities listed are in compliance with ASME/ANSI B30.5b-1991, SAE J987-April 1991, and SAE J765-October 1990.

### Set-Up:

- The crane shall be leveled on a firm supporting surface. Depending on the nature of the supporting surface, it may be necessary to have structural supports under the crawler side frames to spread the load to a larger bearing surface.
- For required parts of line, see wire rope strength and winch performance tables in Crane Rating Manual.

### Lift Crane Operation:

- Capacities shown are in pounds and are not more than 75% of the tipping loads with the crane standing level on firm supporting surface. A deduction must be made from these capacities for weight of hook block, hook, sling, grapple, load weighing device, etc. When using main hook while jib is attached, reduce capacities by values shown in Crane Rating Manual. See Operator's Manual for all limitations when raising or lowering attachment.
- The capacities in the shaded areas are based on structural strength. The capacities in the non-shaded areas are based on stability ratings.
- For recommended reeving, parts of line, wire rope type and wire rope inspection, see wire rope strength chart, Operator's Manual and Parts Manual.
- Load ratings are based on freely suspended loads and make no allowances for such factors as the effect of the wind, ground conditions, and operating speeds. The operator shall therefore reduce load ratings in order to take these conditions into account.
- Rated lifting capacities do not account for the effects of wind on a suspended load or boom. Lifting capacities should be considered acceptable for wind speeds less than 20 mph (32.19 km/hr) and appropriately reduced for wind speeds greater than 20 mph (32.19 km/hr). Extreme caution should be used when lifting heavy loads or loads with large wind sail area under high wind conditions (over 20 mph - 32.19 km/hr).

- Auxiliary lower counterweights are to be used for specific, infrequent lifts only. Avoid travel with lower counterweights installed on machine. Doing so may cause decreased travel torque and/or excessive wear to drive components.
- The 30' (9.14 m) live mast must be used for all capacities listed.
- The least stabilized condition is over the side.
- Booms must be erected and lowered over the end.
- Do not operate at radii and boom lengths where the Crane Rating Manual lists no capacity. Do not use longer booms or jibs than those listed in the Crane Rating Manual. Any of the above can cause a tipping condition, or boom and jib failure.
- These capacities apply only to the crane as originally manufactured and normally equipped by Link-Belt Construction Equipment Company.

### For Over End Capacities Only:

- These capacities can be lifted over either end with crane standing level on firm supporting surface with **adequate blocking placed under the tread member sprockets/idlers** at the lift off end, to prevent rocking.
- Do not travel with a load.

## Tubular Jib Capacities

Jib Capacity Base Rating - 40,000 lb. (50' + 30' @ 18' radius)

18 144 kg (15.24 m + 9.14 m @ 5.48 m radius)

68" x 80" (1.73 x 2.03 m) Tube Boom - 24" x 32" (.61 x .81 m) Tube Jib - 360° Rotation

Boom Length (feet)	Jib Length (feet)	Jib Load Radius (feet)	Jib Angle to Boom								
			5 Degrees			15 Degrees			25 Degrees		
			Boom Angle (degree)	Jib Pt. Height (feet)	ABC+ A Cwt. (lbs.)	Boom Angle (degree)	Jib Pt. Height (feet)	ABC+ A Cwt. (lbs.)	Boom Angle (degree)	Jib Pt. Height (feet)	ABC+ A Cwt. (lbs.)
60	40	25	79.7	107.5	36,000*						
60	40	30	76.8	106.3	36,000*	80.6	105.5	35,800*			
60	40	35	73.9	104.8	36,000*	77.7	104.0	35,400*	81.2	102.5	34,600*
60	40	40	70.9	103.0	35,800*	74.7	102.3	35,000*	78.2	100.7	33,400*
60	40	50	64.8	98.6	35,000*	68.5	97.7	34,500*	71.9	96.1	29,000*
60	40	60	58.3	92.7	34,400*	61.9	91.8	32,000*	65.2	90.0	25,700*
60	40	70	51.3	85.1	32,100*	54.8	84.1	28,200*	57.9	82.2	23,200*
60	40	80	43.4	75.2	28,000*	46.8	74.1	25,300*	49.7	71.8	22,600*
60	40	90	34.0	61.8	24,900*	37.2	60.4	23,100*			
60	60	30	79.8	126.9	26,800*						
60	60	35	77.4	125.7	26,600*						
60	60	40	75.0	124.2	26,400*	79.7	123.2	25,700*			
60	60	50	70.0	120.6	25,700*	74.7	119.6	24,500*	79.2	117.5	22,500*
60	60	60	64.8	115.9	24,600*	69.5	114.8	23,500*	73.9	112.7	20,000*
60	60	70	59.4	110.0	23,600*	64.0	108.9	22,300*	68.3	106.7	17,800*
60	60	80	53.6	102.8	22,500*	58.1	101.6	19,700*	62.3	99.2	16,100*
60	60	90	47.3	93.8	21,000*	51.7	92.5	17,700*	55.7	89.8	14,700*
60	60	100	40.2	82.4	18,800*	44.5	80.9	16,100*	48.2	77.7	13,600*
60	60	110	31.7	67.3	17,000*	35.8	65.3	14,900*			
60	80	30	82.0	147.3	17,900*						
60	80	35	79.9	146.2	17,600*						
60	80	40	77.9	145.0	17,300*						
60	80	50	73.6	141.9	16,700*	79.1	140.8	15,900*			
60	80	60	69.3	138.0	15,900*	74.7	136.9	15,000*	80.0	134.5	14,200*
60	80	70	64.8	133.2	15,000*	70.2	132.0	14,200*	75.4	129.6	13,700*
60	80	80	60.2	127.4	14,200*	65.5	126.1	13,700*	70.6	123.6	12,400*
60	80	90	55.3	120.3	13,700*	60.5	119.0	13,100*	65.5	116.3	11,300*
60	80	100	50.0	111.9	13,100*	55.2	110.4	12,500*	60.0	107.5	10,300*
60	80	110	44.2	101.6	12,400*	49.3	100.0	11,600*	54.0	96.7	9,600*
60	80	120	37.7	88.9	11,800*	42.7	87.0	10,700*	47.0	83.2	9,000*
60	80	130	29.9	72.2	11,300*						
60	100	35	81.8	166.7	9,900*						
60	100	40	80.0	165.6	9,700*						
60	100	50	76.3	162.9	9,100*						
60	100	60	72.6	159.6	8,500*	78.6	158.3	8,100*			
60	100	70	68.8	155.5	8,100*	74.8	154.2	7,700*	80.6	151.6	7,400*
60	100	80	64.9	150.5	7,700*	70.8	149.2	7,400*	76.5	146.5	7,100*
60	100	90	60.8	144.7	7,400*	66.7	143.3	7,100*	72.3	140.5	6,800*
60	100	100	56.5	137.8	7,100*	62.3	136.4	6,800*	67.9	133.5	6,500*
60	100	110	52.0	129.8	6,800*	57.8	128.2	6,500*	63.2	125.1	6,200*
60	100	120	47.1	120.3	6,400*	52.8	118.6	6,100*	58.1	115.2	5,700*
60	100	130	41.7	108.9	6,100*	47.4	107.0	5,600*	52.5	103.2	4,900*
60	100	140	35.7	94.9	5,400*	41.2	92.8	4,800*	46.0	88.3	4,100*
60	100	150	28.4	76.9	4,400*						
80	40	25	81.4	127.9	36,000*						

## Tubular Jib Capacities

Boom Length (feet)	Jib Length (feet)	Jib Load Radius (feet)	Jib Angle to Boom								
			5 Degrees			15 Degrees			25 Degrees		
			Boom Angle (deg)	Jib Pt. Height (feet)	ABC+ A Cwt. (lbs.)	Boom Angle (deg)	Jib Pt. Height (feet)	ABC+ A Cwt. (lbs.)	Boom Angle (deg)	Jib Pt. Height (feet)	ABC+ A Cwt. (lbs.)
80	40	30	79.0	126.9	36,000*						
80	40	35	76.6	125.7	36,000*	79.8	124.8	35,700*			
80	40	40	74.2	124.2	36,000*	77.3	123.4	35,300*	80.3	121.6	34,600*
80	40	50	69.2	120.6	35,600*	72.3	119.7	34,700*	75.2	117.9	31,000*
80	40	60	64.0	115.9	34,900*	67.1	115.0	34,400*	69.9	113.1	27,700*
80	40	70	58.6	110.1	34,500*	61.6	109.1	31,700*	64.3	107.1	25,200*
80	40	80	52.8	102.8	33,100*	55.7	101.7	28,500*	58.3	99.6	23,200*
80	40	90	46.5	93.8	29,400*	49.3	92.6	26,000*	51.8	90.3	22,500*
80	40	100	39.4	82.4	26,400*	42.1	81.1	24,000*			
80	40	110	30.9	67.3	24,100*						
80	60	30	81.3	147.3	26,900*						
80	60	35	79.2	146.2	26,700*						
80	60	40	77.2	145.0	26,600*	81.2	143.9	26,000*			
80	60	50	72.9	141.9	26,200*	77.0	140.8	25,000*	80.9	138.6	22,400*
80	60	60	68.6	138.0	25,400*	72.6	136.9	24,100*	76.4	134.6	21,200*
80	60	70	64.1	133.2	24,400*	68.1	132.0	22,600*	71.8	129.6	19,100*
80	60	80	59.5	127.4	23,600*	63.4	126.1	21,900*	67.0	123.6	17,300*
80	60	90	54.6	120.3	22,500*	58.4	119.0	19,800*	61.9	116.3	15,900*
80	60	100	49.3	111.9	21,800*	53.1	110.4	18,000*	56.5	107.5	14,800*
80	60	110	43.5	101.6	19,700*	47.2	100.0	16,600*	50.4	96.8	13,900*
80	60	120	37.0	88.9	18,000*	40.6	87.0	15,500*			
80	60	130	29.2	72.2	16,600*						
80	80	35	81.2	166.7	17,800*						
80	80	40	79.4	165.6	17,600*						
80	80	50	75.7	162.9	17,000*	80.5	161.6	16,200*			
80	80	60	72.0	159.6	16,500*	76.8	158.2	15,400*	81.4	155.6	14,400*
80	80	70	68.2	155.4	15,700*	72.9	154.1	14,600*	77.4	151.4	13,900*
80	80	80	64.2	150.5	14,900*	68.9	149.1	14,100*	73.4	146.3	13,200*
80	80	90	60.2	144.7	14,200*	64.8	143.2	13,600*	69.2	140.3	12,000*
80	80	100	55.9	137.8	13,800*	60.5	136.3	13,100*	64.7	133.2	11,100*
80	80	110	51.3	129.8	13,200*	55.9	128.1	12,600*	60.0	124.8	10,300*
80	80	120	46.5	120.3	12,700*	50.9	118.5	11,800*	54.9	114.9	9,600*
80	80	130	41.1	108.9	12,100*	45.5	106.9	11,000*	49.3	102.9	9,100*
80	80	140	35.0	94.9	11,600*	39.3	92.6	10,300*			
80	80	150	27.7	76.8	11,100*						
80	100	40	81.1	186.0	9,800*						
80	100	50	77.9	183.7	9,300*						
80	100	60	74.6	180.7	8,800*	80.0	179.3	8,200*			
80	100	70	71.3	177.1	8,400*	76.6	175.7	7,900*	81.7	172.7	7,400*
80	100	80	67.8	172.8	8,000*	73.1	171.3	7,600*	78.2	168.3	7,200*
80	100	90	64.3	167.8	7,700*	69.6	166.3	7,300*	74.6	163.1	6,900*
80	100	100	60.7	162.0	7,400*	65.9	160.4	7,000*	70.8	157.1	6,700*
80	100	110	56.9	155.3	7,100*	62.1	153.6	6,800*	66.9	150.2	6,400*
80	100	120	52.9	147.5	6,800*	58.0	145.7	6,500*	62.8	142.1	6,100*
80	100	130	48.7	138.5	6,500*	53.8	136.6	6,200*	58.4	132.7	5,700*
80	100	140	44.1	128.0	6,200*	49.1	126.0	5,800*	53.6	121.7	5,100*

# STERLING CRANE

Boom Length (feet)	Jib Length (feet)	Jib Load Radius (feet)	Jib Angle to Boom								
			5 Degrees			15 Degrees			25 Degrees		
			Boom Angle (degree)	Jib Pt. Height (feet)	ABC+ A Cwt. (lbs.)	Boom Angle (degree)	Jib Pt. Height (feet)	ABC+ A Cwt. (lbs.)	Boom Angle (degree)	Jib Pt. Height (feet)	ABC+ A Cwt. (lbs.)
80	100	150	39.1	115.6	5,800*	44.0	113.3	5,200*	48.3	108.6	4,400*
80	100	160	33.4	100.6	5,100*	38.2	97.8	4,400*			
80	100	170	26.6	81.1	4,200*						
100	40	30	80.6	147.3	36,000*						
100	40	35	78.5	146.3	36,000*	81.2	145.4	35,900*			
100	40	40	76.5	145.0	36,000*	79.1	144.1	35,600*	81.7	142.3	34,600*
100	40	50	72.2	142.0	36,000*	74.9	141.0	35,000*	77.4	139.2	32,600*
100	40	60	67.9	138.1	35,400*	70.6	137.1	34,600*	73.0	135.2	29,400*
100	40	70	63.4	133.2	34,800*	66.1	132.2	34,300*	68.4	130.3	26,900*
100	40	80	58.8	127.4	34,500*	61.3	126.4	31,500*	63.6	124.3	24,900*
100	40	90	53.9	120.4	33,800*	56.4	119.3	28,700*	58.6	117.1	23,200*
100	40	100	48.6	111.9	30,400*	51.1	110.7	26,500*	53.1	108.3	22,500*
100	40	110	42.8	101.7	27,700*	45.2	100.3	24,700*	47.1	97.7	22,500*
100	40	120	36.3	88.9	25,000	38.6	87.4	23,200*			
100	40	130	28.5	72.3	22,500						
100	60	35	80.6	166.7	26,800*						
100	60	40	78.8	165.6	26,700*						
100	60	50	75.1	162.9	26,400*	78.7	161.7	25,400*			
100	60	60	71.4	159.6	26,000*	74.9	158.3	24,600*	78.3	155.9	22,200*
100	60	70	67.6	155.5	25,200*	71.1	154.2	23,800*	74.3	151.7	20,100*
100	60	80	63.6	150.5	24,300*	67.1	149.2	22,400*	70.3	146.6	18,400*
100	60	90	59.5	144.7	23,600*	63.0	143.3	21,700*	66.1	140.6	17,000*
100	60	100	55.3	137.8	22,800*	58.6	136.4	19,800*	61.7	133.5	15,800*
100	60	110	50.7	129.8	21,100*	54.1	128.2	18,300*	57.0	125.2	14,900*
100	60	120	45.9	120.3	19,700*	49.1	118.6	17,000*	51.9	115.3	14,000*
100	60	130	40.5	108.9	18,400*	43.7	107.0	15,900*	46.3	103.3	13,400*
100	60	140	34.4	94.9	17,300*	37.5	92.8	15,000*			
100	60	150	27.1	76.9	16,300*						
100	80	40	80.6	186.0	17,700*						
100	80	50	77.3	183.7	17,300*	81.6	182.3	16,400*			
100	80	60	74.1	180.7	16,800*	78.3	179.3	15,700*			
100	80	70	70.7	177.1	16,200*	74.9	175.7	15,000*	78.9	172.7	14,100*
100	80	80	67.3	172.8	15,500*	71.5	171.3	14,400*	75.4	168.3	13,700*
100	80	90	63.8	167.8	14,800*	67.9	166.3	14,000*	71.8	163.2	12,700*
100	80	100	60.1	162.0	14,200*	64.2	160.4	13,600*	68.1	157.2	11,700*
100	80	110	56.3	155.3	13,800*	60.4	153.6	13,100*	64.1	150.2	10,900*
100	80	120	52.4	147.5	13,400*	56.4	145.7	12,700*	60.0	142.1	10,300*
100	80	130	48.1	138.5	12,900*	52.1	136.6	11,900*	55.6	132.8	9,700*
100	80	140	43.6	128.0	12,400*	47.5	126.0	11,200*	50.8	121.8	9,200*
100	80	150	38.6	115.6	11,900*	42.4	113.3	10,600*	45.5	108.6	8,800*
100	80	160	32.9	100.6	11,300*	36.5	97.8	10,000*			
100	80	170	26.0	81.1	10,700*						
100	100	50	79.1	204.3	9,500*						
100	100	60	76.2	201.6	9,100*	81.0	200.0	8,300*			
100	100	70	73.2	198.4	8,600*	78.0	196.8	8,000*			



## Tubular Jib Capacities

Boom Length (feet)	Jib Length (feet)	Jib Load Radius (feet)	Jib Angle to Boom								
			5 Degrees			15 Degrees			25 Degrees		
			Boom Angle (deg)	Jib Pt. Height (feet)	ABC+ A Cwt. (lbs.)	Boom Angle (deg)	Jib Pt. Height (feet)	ABC+ A Cwt. (lbs.)	Boom Angle (deg)	Jib Pt. Height (feet)	ABC+ A Cwt. (lbs.)
100	100	80	70.2	194.6	8,300*	74.9	193.0	7,700*	79.5	189.7	7,300*
100	100	90	67.1	190.2	8,000*	71.8	188.5	7,400*	76.3	185.1	7,100*
100	100	100	63.9	185.1	7,600*	68.6	183.4	7,200*	73.0	179.9	6,800*
100	100	110	60.6	179.3	7,400*	65.3	177.5	7,000*	69.7	173.9	6,600*
100	100	120	57.2	172.7	7,100*	61.8	170.8	6,800*	66.1	167.0	6,400*
100	100	130	53.7	165.1	6,900*	58.3	163.2	6,500*	62.5	159.2	6,100*
100	100	140	49.9	156.5	6,600*	54.5	154.4	6,300*	58.6	150.2	5,800*
100	100	150	46.0	146.7	6,400*	50.4	144.5	6,000*	54.4	139.9	5,200*
100	100	160	41.7	135.3	6,100*	46.1	132.9	5,400*	49.9	127.9	4,600*
100	100	170	36.9	122.0	5,500*	41.2	119.2	4,800*			
100	100	180	31.6	105.8	4,800*	35.7	102.6	4,000*			
100	100	190	25.1	85.2	4,000*						
120	40	30	81.8	167.6	36,000*						
120	40	35	80.0	166.7	36,000*						
120	40	40	78.2	165.6	36,000*	80.5	164.7	35,800*			
120	40	50	74.5	163.0	36,000*	76.9	162.0	35,300*	79.1	160.1	33,900*
120	40	60	70.8	159.6	35,800*	73.1	158.6	34,800*	75.3	156.7	30,800*
120	40	70	67.0	155.5	35,300*	69.3	154.5	34,500*	71.4	152.5	28,400*
120	40	80	63.0	150.6	34,800*	65.3	149.5	34,200*	67.3	147.5	26,300*
120	40	90	58.9	144.7	34,500*	61.2	143.6	31,300*	63.2	141.5	24,600*
120	40	100	54.7	137.9	31,300	56.9	136.7	28,900*	58.8	134.4	23,200*
120	40	110	50.1	129.8	27,600	52.3	128.6	26,900*	54.1	126.2	22,400*
120	40	120	45.2	120.3	24,400	47.4	119.0	24,700	49.1	116.3	22,500*
120	40	130	39.9	108.9	22,000	41.9	107.5	22,200			
120	40	140	33.8	95.0	19,800	35.8	93.3	20,000			
120	40	150	26.5	76.9	17,900						
120	60	35	81.6	187.0	26,900*						
120	60	40	80.0	186.1	26,800*						
120	60	50	76.8	183.7	26,500*	80.0	182.4	25,700*			
120	60	60	73.5	180.8	26,300*	76.7	179.5	25,000*	79.6	176.9	22,300*
120	60	70	70.2	177.1	25,700*	73.3	175.8	24,200*	76.2	173.2	21,000*
120	60	80	66.8	172.9	25,000*	69.8	171.5	23,400*	72.7	168.8	19,300*
120	60	90	63.2	167.8	24,200*	66.3	166.5	22,300*	69.1	163.7	17,900*
120	60	100	59.6	162.0	23,000*	62.6	160.6	21,400*	65.4	157.7	16,700*
120	60	110	55.8	155.3	21,300*	58.8	153.8	19,800*	61.5	150.8	15,700*
120	60	120	51.8	147.5	19,700*	54.8	145.9	18,500*	57.4	142.7	14,900*
120	60	130	47.6	138.5	18,400*	50.5	136.8	17,300*	53.0	133.4	14,100*
120	60	140	43.0	128.1	17,200*	45.9	126.2	16,300*	48.2	122.5	13,500*
120	60	150	38.0	115.7	16,100*	40.8	113.6	15,500*			
120	60	160	32.3	100.6	15,200*						
120	60	170	25.5	81.2	14,400*						
120	80	40	81.5	206.4	17,900*						
120	80	50	78.6	204.3	17,400*						
120	80	60	75.7	201.7	17,000*	79.5	200.1	16,000*			
120	80	70	72.7	198.4	16,600*	76.5	196.9	15,400*	80.1	193.8	14,200*
120	80	80	69.7	194.7	16,000*	73.5	193.1	14,700*	77.0	189.9	13,900*

# STERLING CRANE

Boom Length (feet)	Jib Length (feet)	Jib Load Radius (feet)	Jib Angle to Boom								
			5 Degrees			15 Degrees			25 Degrees		
			Boom Angle (degree)	Jib Pt. Height (feet)	ABC+ A Cwt. (lbs.)	Boom Angle (degree)	Jib Pt. Height (feet)	ABC+ A Cwt. (lbs.)	Boom Angle (degree)	Jib Pt. Height (feet)	ABC+ A Cwt. (lbs.)
120	80	90	66.6	190.2	15,400*	70.3	188.6	14,300*	73.8	185.3	13,200*
120	80	100	63.4	185.1	14,700*	67.1	183.5	13,900*	70.6	180.1	12,300*
120	80	110	60.1	179.3	14,200*	63.8	177.6	13,500*	67.2	174.1	11,500*
120	80	120	56.7	172.7	13,900*	60.4	170.9	13,100*	63.7	167.3	10,800*
120	80	130	53.2	165.1	13,400*	56.8	163.3	12,700*	60.0	159.5	10,200*
120	80	140	49.4	156.6	12,800*	53.0	154.5	12,100*	56.1	150.5	9,700*
120	80	150	45.5	146.7	12,000*	49.0	144.6	11,400*	52.0	140.2	9,000*
120	80	160	41.2	135.4	11,200*	44.6	133.0	10,800*	47.4	128.3	8,300*
120	80	170	36.4	122.0	10,500*	39.8	119.4	10,300*			
120	80	180	31.1	105.9	9,900*						
120	100	50	80.1	224.8	9,700*						
120	100	60	77.5	222.4	9,300*	81.8	220.7	8,400*			
120	100	70	74.8	219.5	8,900*	79.1	217.7	8,200*			
120	100	80	72.0	216.1	8,500*	76.4	214.3	7,900*	80.5	210.7	7,400*
120	100	90	69.3	212.1	8,200*	73.6	210.3	7,600*	77.7	206.7	7,200*
120	100	100	66.4	207.6	7,900*	70.7	205.7	7,400*	74.8	202.0	7,000*
120	100	110	63.5	202.4	7,600*	67.8	200.5	7,200*	71.8	196.7	6,800*
120	100	120	60.6	196.6	7,400*	64.8	194.7	7,000*	68.7	190.7	6,500*
120	100	130	57.5	190.1	7,100*	61.7	188.0	6,700*	65.5	183.9	6,300*
120	100	140	54.3	182.7	6,900*	58.4	180.6	6,500*	62.2	176.3	6,100*
120	100	150	50.9	174.4	6,700*	55.0	172.2	6,300*	58.7	167.7	5,700*
120	100	160	47.4	165.1	6,500*	51.5	162.7	6,000*	55.0	157.9	5,200*
120	100	170	43.6	154.4	6,200*	47.6	151.9	5,600*	51.1	146.7	4,700*
120	100	180	39.6	142.2	5,900*	43.5	139.5	5,100*	46.8	133.8	4,200*
120	100	190	35.1	128.0	5,300*	38.9	124.9	4,500*			
120	100	200	30.0	110.9	4,600*						
140	40	35	81.1	187.1	36,000*						
140	40	40	79.5	186.1	36,000*	81.6	185.1	35,900*			
140	40	50	76.2	183.7	36,000*	78.3	182.8	35,500*	80.3	180.8	34,600*
140	40	60	73.0	180.8	36,000*	75.0	179.8	35,000*	77.0	177.8	32,000*
140	40	70	69.6	177.2	35,600*	71.7	176.2	34,600*	73.6	174.1	29,600*
140	40	80	66.2	172.9	35,200*	68.2	171.9	34,400*	70.1	169.8	27,600*
140	40	90	62.7	167.9	34,700*	64.7	166.8	33,600*	66.5	164.7	25,900*
140	40	100	59.1	162.1	30,800	61.0	160.9	31,100*	62.8	158.7	24,400*
140	40	110	55.3	155.3	27,000	57.2	154.2	27,300	58.9	151.8	23,100*
140	40	120	51.3	147.6	23,900	53.2	146.3	24,100	54.8	143.9	22,400*
140	40	130	47.1	138.6	21,500	48.9	137.3	21,700	50.5	134.6	21,900
140	40	140	42.5	128.1	19,300	44.3	126.7	19,500	45.8	123.8	19,600
140	40	150	37.5	115.7	17,400	39.3	114.1	17,500			
140	40	160	31.8	100.7	15,800						
140	60	40	81.0	206.4	26,900*						
140	60	50	78.1	204.3	26,600*	81.0	203.0	25,900*			
140	60	60	75.2	201.7	26,400*	78.0	200.3	25,300*	80.7	197.7	22,300*
140	60	70	72.2	198.5	26,200*	75.0	197.1	24,600*	77.7	194.4	21,700*
140	60	80	69.2	194.7	25,500*	72.0	193.3	23,900*	74.6	190.5	20,100*
140	60	90	66.1	190.3	24,900*	68.9	188.8	22,700*	71.4	186.0	18,700*

## Tubular Jib Capacities

Boom Length (feet)	Jib Length (feet)	Jib Load Radius (feet)	Jib Angle to Boom								
			5 Degrees			15 Degrees			25 Degrees		
			Boom Angle (deg)	Jib Pt. Height (feet)	ABC+ A Cwt. (lbs.)	Boom Angle (deg)	Jib Pt. Height (feet)	ABC+ A Cwt. (lbs.)	Boom Angle (deg)	Jib Pt. Height (feet)	ABC+ A Cwt. (lbs.)
140	60	100	62.9	185.2	24,000*	65.7	183.7	22,200*	68.2	180.8	17,600*
140	60	110	59.6	179.3	22,100*	62.4	177.8	20,700*	64.8	174.8	16,500*
140	60	120	56.2	172.7	19,800*	58.9	171.1	19,300*	61.3	168.0	15,700*
140	60	130	52.7	165.2	18,400*	55.3	163.5	18,000*	57.7	160.2	14,900*
140	60	140	49.0	156.6	17,100*	51.6	154.8	16,900*	53.8	151.3	14,200*
140	60	150	45.0	146.8	16,000*	47.5	144.9	15,800*	49.7	141.1	13,700*
140	60	160	40.7	135.4	15,000*	43.2	133.4	14,900*	45.2	129.2	12,600*
140	60	170	36.0	122.0	14,200*	38.4	119.8	14,100*			
140	60	180	30.6	105.9	13,400*						
140	80	50	79.7	224.8	17,600*						
140	80	60	77.0	222.4	17,200*	80.5	220.8	16,100*			
140	80	70	74.3	219.5	16,800*	77.8	217.9	15,600*	81.1	214.6	14,300*
140	80	80	71.6	216.1	16,400*	75.0	214.4	15,100*	78.3	211.1	14,000*
140	80	90	68.8	212.1	15,800*	72.2	210.4	14,500*	75.4	207.1	13,700*
140	80	100	66.0	207.6	15,200*	69.4	205.9	14,200*	72.5	202.4	12,800*
140	80	110	63.1	202.5	14,700*	66.5	200.7	13,800*	69.6	197.1	12,000*
140	80	120	60.1	196.6	14,200*	63.4	194.8	13,500*	66.5	191.1	11,300*
140	80	130	57.0	190.1	13,800*	60.3	188.2	13,100*	63.3	184.4	10,300*
140	80	140	53.8	182.7	12,800*	57.1	180.7	12,600*	60.0	176.8	9,300*
140	80	150	50.5	174.4	11,900*	53.7	172.4	11,700*	56.5	168.2	8,400*
140	80	160	46.9	165.1	11,100*	50.1	162.9	11,000*	52.9	158.4	7,600*
140	80	170	43.2	154.5	10,400*	46.3	152.1	10,200*	48.9	147.3	6,900*
140	80	180	39.1	142.3	9,800*	42.2	139.7	9,500*			
140	80	190	34.6	128.0	9,200*	37.6	125.1	8,900*			
140	80	200	29.5	110.9	8,800*						
140	100	50	80.9	245.2	9,800*						
140	100	60	78.5	243.0	9,400*						
140	100	70	76.1	240.4	9,100*	80.1	238.5	8,300*			
140	100	80	73.6	237.3	8,700*	77.6	235.4	8,000*	81.4	231.6	7,400*
140	100	90	71.1	233.7	8,400*	75.0	231.8	7,800*	78.8	227.9	7,200*
140	100	100	68.5	229.6	8,100*	72.5	227.6	7,500*	76.2	223.7	7,100*
140	100	110	65.9	224.9	7,800*	69.8	223.0	7,300*	73.5	219.0	6,900*
140	100	120	63.3	219.7	7,600*	67.1	217.7	7,100*	70.8	213.6	6,700*
140	100	130	60.5	213.9	7,300*	64.4	211.8	6,900*	67.9	207.6	6,500*
140	100	140	57.7	207.4	7,200*	61.5	205.3	6,700*	65.0	200.9	6,100*
140	100	150	54.8	200.2	7,000*	58.6	198.0	6,500*	62.0	193.5	5,500*
140	100	160	51.7	192.2	6,800*	55.5	189.8	6,300*	58.8	185.1	5,000*
140	100	170	48.6	183.2	6,500*	52.3	180.7	6,100*	55.5	175.8	4,500*
140	100	180	45.2	173.1	6,300*	48.9	170.5	5,800*	52.0	165.2	4,000*
140	100	190	41.6	161.8	6,100*	45.2	159.0	5,300*	48.2	153.3	3,700*
140	100	200	37.7	148.8	5,600*	41.3	145.7	4,800*			
140	100	210	33.5	133.7	5,100*	36.9	130.3	4,200*			
140	100	220	28.6	115.7	4,400*						
160	40	35	82.0	207.3	36,000*						
160	40	40	80.5	206.5	36,000*						
160	40	50	77.6	204.4	36,000*	79.5	203.4	35,600*	81.3	201.4	34,600*

# STERLING CRANE

Boom Length (feet)	Jib Length (feet)	Jib Load Radius (feet)	Jib Angle to Boom								
			5 Degrees			15 Degrees			25 Degrees		
			Boom Angle (degree)	Jib Pt. Height (feet)	ABC+ A Cwt. (lbs.)	Boom Angle (degree)	Jib Pt. Height (feet)	ABC+ A Cwt. (lbs.)	Boom Angle (degree)	Jib Pt. Height (feet)	ABC+ A Cwt. (lbs.)
160	40	60	74.7	201.7	36,000*	76.6	200.7	35,200*	78.3	198.7	33,000*
160	40	70	71.7	198.5	35,900*	73.6	197.5	34,900*	75.3	195.4	30,700*
160	40	80	68.7	194.7	35,500*	70.5	193.7	34,600*	72.2	191.6	28,700*
160	40	90	65.6	190.3	35,000	67.4	189.2	34,400*	69.1	187.1	27,000*
160	40	100	62.4	185.2	30,200	64.2	184.1	30,600	65.8	181.9	25,500*
160	40	110	59.1	179.4	26,400	60.9	178.2	26,700	62.5	176.0	24,200*
160	40	120	55.7	172.8	23,300	57.5	171.6	23,600	59.0	169.2	23,100*
160	40	130	52.2	165.2	20,900	53.9	164.0	21,200	55.4	161.5	21,400
160	40	140	48.5	156.6	18,700	50.2	155.3	19,000	51.6	152.7	19,200
160	40	150	44.5	146.8	16,800	46.2	145.4	17,000	47.5	142.5	17,200
160	40	160	40.2	135.5	15,200	41.8	133.9	15,400			
160	40	170	35.5	122.1	13,800	37.0	120.4	13,900			
160	40	180	30.1	106.0	12,500						
160	60	40	81.8	226.7	26,900*						
160	60	50	79.2	224.8	26,700*	81.8	223.5	26,100*			
160	60	60	76.6	222.4	26,500*	79.2	221.1	25,500*	81.6	218.3	22,000*
160	60	70	73.9	219.5	26,300*	76.5	218.1	24,900*	78.9	215.4	22,200*
160	60	80	71.2	216.1	26,000*	73.7	214.7	24,300*	76.1	211.9	20,800*
160	60	90	68.4	212.2	25,400*	70.9	210.7	23,800*	73.3	207.8	19,400*
160	60	100	65.6	207.6	23,800*	68.1	206.2	22,200*	70.4	203.2	18,300*
160	60	110	62.7	202.5	21,200*	65.1	201.0	20,600*	67.4	197.9	17,300*
160	60	120	59.7	196.7	19,700*	62.1	195.1	19,100*	64.3	192.0	16,400*
160	60	130	56.6	190.1	18,300*	59.0	188.5	17,900*	61.2	185.3	15,600*
160	60	140	53.4	182.8	17,000*	55.8	181.1	16,700*	57.9	177.7	14,100*
160	60	150	50.0	174.5	15,900*	52.4	172.7	15,700*	54.4	169.1	12,700*
160	60	160	46.5	165.1	14,900*	48.8	163.2	14,700*	50.8	159.5	11,400*
160	60	170	42.7	154.5	14,000*	45.0	152.5	13,900*	46.9	148.4	10,400*
160	60	180	38.7	142.3	12,800	40.9	140.1	13,000			
160	60	190	34.2	128.1	11,700	36.3	125.6	11,900			
160	60	200	29.1	111.0	10,700						
160	80	50	80.5	245.2	17,700*						
160	80	60	78.1	243.0	17,400*	81.3	241.3	16,300*			
160	80	70	75.7	240.4	17,000*	78.8	238.7	15,800*	81.9	235.3	14,400*
160	80	80	73.2	237.3	16,600*	76.3	235.6	15,300*	79.3	232.1	14,100*
160	80	90	70.7	233.7	16,200*	73.8	231.9	14,800*	76.8	228.5	13,900*
160	80	100	68.1	229.6	15,700*	71.2	227.8	14,400*	74.1	224.3	13,200*
160	80	110	65.5	225.0	15,200*	68.6	223.2	14,100*	71.5	219.5	12,300*
160	80	120	62.8	219.8	14,600*	65.9	217.9	13,800*	68.7	214.2	10,900*
160	80	130	60.1	214.0	13,700*	63.2	212.0	13,400*	65.9	208.2	9,700*
160	80	140	57.3	207.5	12,800*	60.3	205.5	12,500*	63.0	201.5	8,800*
160	80	150	54.4	200.3	11,900*	57.4	198.2	11,500*	60.0	194.1	7,900*
160	80	160	51.3	192.2	11,100*	54.3	190.1	10,500*	56.9	185.8	7,100*
160	80	170	48.2	183.2	10,300*	51.1	181.0	9,500*	53.6	176.5	6,500*
160	80	180	44.8	173.2	9,700*	47.7	170.8	8,900*	50.1	166.0	5,900*
160	80	190	41.2	161.8	9,100*	44.0	159.2	8,100*	46.3	154.1	5,400*
160	80	200	37.3	148.8	8,600*	40.1	146.0	7,600*			
160	80	210	33.1	133.8	8,100*	35.7	130.6	6,900*			

## Tubular Jib Capacities

Boom Length (feet)	Jib Length (feet)	Jib Load Radius (feet)	Jib Angle to Boom								
			5 Degrees			15 Degrees			25 Degrees		
			Boom Angle (deg)	Jib Pt. Height (feet)	ABC+ A Cwt. (lbs.)	Boom Angle (deg)	Jib Pt. Height (feet)	ABC+ A Cwt. (lbs.)	Boom Angle (deg)	Jib Pt. Height (feet)	ABC+ A Cwt. (lbs.)
160	80	220	28.2	115.7	7,700*						
160	100	50	81.6	265.5	9,900*						
160	100	60	79.4	263.5	9,600*						
160	100	70	77.2	261.1	9,200*	80.9	259.1	8,300*			
160	100	80	74.9	258.2	8,900*	78.6	256.3	8,100*			
160	100	90	72.6	255.0	8,500*	76.2	253.0	7,900*	79.7	249.0	7,300*
160	100	100	70.3	251.2	8,300*	73.9	249.2	7,600*	77.3	245.2	7,100*
160	100	110	67.9	247.0	8,000*	71.5	245.0	7,400*	74.9	240.8	7,000*
160	100	120	65.5	242.3	7,800*	69.1	240.2	7,200*	72.4	236.0	6,800*
160	100	130	63.0	237.1	7,600*	66.6	234.9	7,100*	69.9	230.6	6,400*
160	100	140	60.5	231.2	7,300*	64.0	229.0	6,900*	67.3	224.6	5,800*
160	100	150	57.9	224.8	7,200*	61.4	222.5	6,700*	64.6	218.0	5,200*
160	100	160	55.2	217.7	7,000*	58.7	215.4	6,500*	61.8	210.7	4,700*
160	100	170	52.4	209.9	6,800*	55.9	207.4	6,300*	59.0	202.5	4,200*
160	100	180	49.5	201.2	6,600*	52.9	198.7	5,700*	55.9	193.5	3,800*
160	100	190	46.5	191.6	6,400*	49.9	188.9	5,200*	52.8	183.5	3,500*
160	100	200	43.3	180.9	6,200*	46.6	178.0	4,900*	49.4	172.2	3,200*
160	100	210	39.9	168.8	5,900*	43.1	165.7	4,500*	45.8	159.5	2,900*
160	100	220	36.2	155.1	5,400*	39.3	151.7	4,200*			
160	100	230	32.1	139.2	4,900*	35.1	135.4	3,900*			
160	100	240	27.4	120.2	4,300*						
180	40	40	81.4	226.8	36,000*						
180	40	50	78.8	224.9	36,000*	80.5	223.8	35,800*			
180	40	60	76.1	222.5	36,000*	77.8	221.4	35,400*	79.4	219.4	33,900*
180	40	70	73.4	219.6	36,000*	75.1	218.5	35,100*	76.7	216.5	31,600*
180	40	80	70.7	216.2	35,800*	72.4	215.1	34,700*	73.9	213.0	29,700*
180	40	90	67.9	212.2	34,400	69.6	211.1	34,500*	71.1	209.0	28,000*
180	40	100	65.1	207.7	29,600	66.8	206.6	30,100	68.3	204.4	26,500*
180	40	110	62.2	202.5	25,800	63.8	201.4	26,200	65.3	199.1	25,200*
180	40	120	59.2	196.7	22,700	60.8	195.5	23,000	62.3	193.2	23,300
180	40	130	56.1	190.2	20,400	57.7	189.0	20,700	59.1	186.5	20,900
180	40	140	52.9	182.8	18,200	54.5	181.5	18,400	55.9	179.0	18,700
180	40	150	49.6	174.5	16,300	51.2	173.2	16,500	52.4	170.6	16,700
180	40	160	46.1	165.2	14,600	47.6	163.8	14,800	48.8	161.0	15,000
180	40	170	42.3	154.6	13,200	43.8	153.1	13,300			
180	40	180	38.2	142.4	11,900	39.7	140.7	12,000			
180	40	190	33.8	128.2	10,800	35.1	126.3	10,900			
180	40	200	28.7	111.0	9,800						
180	60	50	80.1	245.2	26,800*						
180	60	60	77.7	243.0	26,600*	80.1	241.6	25,700*			
180	60	70	75.2	240.4	26,400*	77.6	239.0	25,200*	79.8	236.1	22,200*
180	60	80	72.8	237.3	26,200*	75.1	235.9	24,600*	77.3	233.0	21,400*
180	60	90	70.3	233.7	25,500*	72.6	232.3	24,100*	74.8	229.3	20,100*
180	60	100	67.7	229.6	23,500*	70.0	228.1	22,600*	72.2	225.2	18,900*
180	60	110	65.1	225.0	21,000*	67.4	223.5	20,300*	69.5	220.4	17,800*
180	60	120	62.4	219.8	19,500*	64.7	218.2	18,900*	66.8	215.1	15,900*

# STERLING CRANE

Boom Length (feet)	Jib Length (feet)	Jib Load Radius (feet)	Jib Angle to Boom								
			5 Degrees			15 Degrees			25 Degrees		
			Boom Angle (degree)	Jib Pt. Height (feet)	ABC+ A Cwt. (lbs.)	Boom Angle (degree)	Jib Pt. Height (feet)	ABC+ A Cwt. (lbs.)	Boom Angle (degree)	Jib Pt. Height (feet)	ABC+ A Cwt. (lbs.)
180	60	130	59.7	214.0	18,100*	62.0	212.4	17,600*	64.0	209.2	14,400*
180	60	140	56.9	207.5	16,900*	59.1	205.8	16,500*	61.1	202.5	12,800*
180	60	150	54.0	200.3	15,700*	56.2	198.6	15,400*	58.1	195.1	11,500*
180	60	160	50.9	192.3	14,700*	53.1	190.5	14,500*	55.0	186.9	10,300*
180	60	170	47.7	183.3	13,500	49.9	181.4	13,400*	51.7	177.6	9,500*
180	60	180	44.4	173.2	12,300	46.5	171.2	12,300*	48.2	167.2	8,600*
180	60	190	40.8	161.9	11,100	42.9	159.7	11,300			
180	60	200	36.9	148.9	10,100	38.9	146.5	10,300			
180	60	210	32.7	133.8	9,200						
180	60	220	27.8	115.8	8,400						
180	80	50	81.3	265.5	17,800*						
180	80	60	79.0	263.5	17,500*	82.0	261.8	16,400*			
180	80	70	76.8	261.1	17,200*	79.7	259.4	16,000*			
180	80	80	74.5	258.3	16,800*	77.4	256.5	15,500*	80.2	253.0	14,200*
180	80	90	72.2	255.0	16,500*	75.1	253.2	15,100*	77.8	249.6	14,000*
180	80	100	69.9	251.3	16,000*	72.8	249.4	14,600*	75.5	245.8	12,900*
180	80	110	67.5	247.0	15,600*	70.4	245.2	14,300*	73.0	241.5	11,500*
180	80	120	65.1	242.3	14,700*	67.9	240.4	14,000*	70.6	236.7	10,300*
180	80	130	62.6	237.1	13,600*	65.5	235.2	13,000*	68.0	231.3	9,100*
180	80	140	60.1	231.3	12,600*	62.9	229.3	11,600*	65.4	225.3	8,200*
180	80	150	57.5	224.8	11,800*	60.3	222.8	10,700*	62.8	218.7	7,400*
180	80	160	54.8	217.8	11,000*	57.6	215.6	9,600*	60.0	211.4	6,600*
180	80	170	52.0	209.9	10,200*	54.8	207.7	8,900*	57.1	203.3	6,000*
180	80	180	49.1	201.2	9,600*	51.8	198.9	8,100*	54.1	194.3	5,400*
180	80	190	46.1	191.6	9,000*	48.8	189.2	7,500*	51.0	184.4	5,000*
180	80	200	42.9	180.9	8,500*	45.5	178.3	6,800*	47.6	173.2	4,500*
180	80	210	39.5	168.8	8,000*	42.0	166.1	6,400*			
180	80	220	35.8	155.1	7,600*	38.3	152.1	5,800*			
180	80	230	31.7	139.3	7,200*						
180	80	240	27.0	120.3	6,800*						
180	100	60	80.2	283.9	9,700*						
180	100	70	78.1	281.7	9,400*	81.5	279.7	8,400*			
180	100	80	76.0	279.1	9,000*	79.4	277.0	8,200*			
180	100	90	73.9	276.1	8,700*	77.3	274.0	8,000*	80.5	269.9	7,300*
180	100	100	71.7	272.6	8,400*	75.1	270.5	7,800*	78.3	266.4	7,200*
180	100	110	69.5	268.7	8,200*	72.9	266.6	7,500*	76.1	262.4	7,000*
180	100	120	67.3	264.4	8,000*	70.7	262.3	7,400*	73.8	258.0	6,800*
180	100	130	65.1	259.7	7,800*	68.4	257.5	7,200*	71.5	253.1	6,100*
180	100	140	62.8	254.4	7,500*	66.1	252.1	7,000*	69.1	247.6	5,500*
180	100	150	60.4	248.6	7,300*	63.7	246.3	6,900*	66.7	241.7	4,900*
180	100	160	58.0	242.2	7,200*	61.3	239.8	6,400*	64.2	235.1	4,400*
180	100	170	55.6	235.2	7,000*	58.8	232.7	5,900*	61.7	227.9	4,000*
180	100	180	53.0	227.5	6,800*	56.2	225.0	5,400*	59.0	219.9	3,600*
180	100	190	50.3	219.1	6,700*	53.5	216.5	5,000*	56.3	211.2	3,200*
180	100	200	47.6	209.8	6,100*	50.7	207.1	4,500*	53.4	201.6	2,900*
180	100	210	44.7	199.6	5,700*	47.8	196.7	4,200*	50.4	190.9	2,600*
180	100	220	41.6	188.2	5,300*	44.6	185.2	3,900*	47.1	178.9	2,500*

## Tubular Jib Capacities

Boom Length (feet)	Jib Length (feet)	Jib Load Radius (feet)	Jib Angle to Boom								
			5 Degrees			15 Degrees			25 Degrees		
			Boom Angle (deg)	Jib Pt. Height (feet)	ABC+ A Cwt. (lbs.)	Boom Angle (deg)	Jib Pt. Height (feet)	ABC+ A Cwt. (lbs.)	Boom Angle (deg)	Jib Pt. Height (feet)	ABC+ A Cwt. (lbs.)
180	100	230	38.3	175.5	5,000*	41.3	172.2	3,600*			
180	100	240	34.7	161.1	4,600*	37.6	157.5	3,400*			
180	100	250	30.8	144.5	4,400*						
180	100	260	26.3	124.6	4,100*						
200	40	50	79.7	245.3	36,000*	81.3	244.2	35,900*			
200	40	60	77.3	243.1	36,000*	78.9	242.1	35,500*	80.3	240.0	34,600*
200	40	70	74.8	240.5	36,000*	76.4	239.4	35,200*	77.9	237.3	32,500*
200	40	80	72.4	237.4	36,000*	73.9	236.3	34,900*	75.3	234.2	30,500*
200	40	90	69.9	233.8	33,800	71.4	232.7	33,500*	72.8	230.5	28,900*
200	40	100	67.3	229.7	29,000	68.8	228.6	29,500	70.2	226.4	27,400*
200	40	110	64.7	225.1	25,200	66.2	223.9	25,600	67.6	221.7	25,200*
200	40	120	62.0	219.9	22,000	63.5	218.7	22,400	64.9	216.4	22,800
200	40	130	59.3	214.0	19,800	60.8	212.9	20,100	62.1	210.5	20,100*
200	40	140	56.5	207.6	17,600	57.9	206.3	17,900	59.2	203.9	18,100
200	40	150	53.6	200.4	15,700	55.0	199.1	15,900	56.2	196.5	16,200
200	40	160	50.5	192.3	14,000	52.0	191.0	14,300	53.1	188.3	14,500
200	40	170	47.3	183.3	12,600	48.8	181.9	12,800	49.9	179.2	13,000
200	40	180	44.0	173.3	11,300	45.4	171.8	11,500	46.4	168.8	11,600
200	40	190	40.4	161.9	10,200	41.8	160.3	10,300			
200	40	200	36.5	149.0	9,200	37.8	147.2	9,300			
200	40	210	32.3	133.9	8,200*						
200	40	220	27.4	115.9	7,100*						
200	60	50	80.9	265.6	26,900*						
200	60	60	78.7	263.6	26,700*	80.9	262.1	25,900*			
200	60	70	76.4	261.1	26,500*	78.6	259.7	25,400*	80.7	256.8	22,200*
200	60	80	74.1	258.3	26,300*	76.3	256.8	24,900*	78.3	253.9	22,000*
200	60	90	71.8	255.0	25,000*	74.0	253.5	24,000*	76.0	250.6	20,500*
200	60	100	69.5	251.3	23,000*	71.6	249.8	21,400*	73.6	246.8	18,400*
200	60	110	67.1	247.1	20,600*	69.3	245.5	19,900*	71.2	242.5	16,500*
200	60	120	64.7	242.4	19,200*	66.8	240.8	18,600*	68.7	237.7	14,500*
200	60	130	62.2	237.1	17,800*	64.3	235.5	17,200*	66.2	232.3	13,000*
200	60	140	59.7	231.3	16,600*	61.8	229.7	15,800*	63.6	226.4	11,600*
200	60	150	57.1	224.9	15,500*	59.2	223.2	14,300*	61.0	219.8	10,300*
200	60	160	54.4	217.8	14,400	56.5	216.0	12,900*	58.2	212.5	9,500*
200	60	170	51.7	210.0	12,900	53.7	208.1	11,800*	55.4	204.5	8,500*
200	60	180	48.8	201.3	11,700	50.8	199.4	10,800*	52.4	195.6	7,700*
200	60	190	45.7	191.7	10,500	47.7	189.7	9,900*	49.3	185.6	7,100*
200	60	200	42.5	180.9	9,500	44.5	178.8	9,100*	46.0	174.5	6,400*
200	60	210	39.1	168.9	8,600	41.0	166.6	8,400*			
200	60	220	35.4	155.2	7,700*	37.2	152.7	7,700*			
200	60	230	31.3	139.3	6,800*						
200	60	240	26.6	120.4	5,900*						
200	80	50	81.9	285.8	17,900*						
200	80	60	79.8	284.0	17,600*						
200	80	70	77.7	281.7	17,300*	80.5	279.9	16,100*			
200	80	80	75.6	279.1	17,000*	78.4	277.3	15,700*	80.9	273.7	14,300*

# STERLING CRANE

Boom Length (feet)	Jib Length (feet)	Jib Load Radius (feet)	Jib Angle to Boom								
			5 Degrees			15 Degrees			25 Degrees		
			Boom Angle (degree)	Jib Pt. Height (feet)	ABC+ A Cwt. (lbs.)	Boom Angle (degree)	Jib Pt. Height (feet)	ABC+ A Cwt. (lbs.)	Boom Angle (degree)	Jib Pt. Height (feet)	ABC+ A Cwt. (lbs.)
200	80	90	73.5	276.1	16,700*	76.2	274.2	15,300*	78.8	270.6	13,800*
200	80	100	71.4	272.6	16,300*	74.1	270.8	14,900*	76.6	267.1	12,200*
200	80	110	69.2	268.8	15,700*	71.9	266.9	14,400*	74.3	263.1	10,800*
200	80	120	67.0	264.5	14,500*	69.6	262.6	13,300*	72.1	258.7	9,700*
200	80	130	64.7	259.7	13,400*	67.4	257.7	12,000*	69.8	253.8	8,500*
200	80	140	62.4	254.4	12,500*	65.1	252.4	10,800*	67.4	248.4	7,600*
200	80	150	60.1	248.6	11,600*	62.7	246.6	9,800*	65.0	242.5	6,700*
200	80	160	57.7	242.2	10,800*	60.3	240.1	8,900*	62.6	235.9	6,200*
200	80	170	55.2	235.2	10,100*	57.8	233.1	8,100*	60.0	228.7	5,500*
200	80	180	52.6	227.6	9,500*	55.2	225.3	7,300*	57.4	220.8	5,000*
200	80	190	50.0	219.1	8,900*	52.5	216.8	6,800*	54.6	212.1	4,600*
200	80	200	47.2	209.9	8,200*	49.7	207.4	6,100*	51.8	202.5	4,100*
200	80	210	44.3	199.6	7,700*	46.8	197.1	5,700*	48.7	191.9	3,800*
200	80	220	41.2	188.3	7,000*	43.6	185.5	5,300*	45.5	180.0	3,500*
200	80	230	38.0	175.6	6,600*	40.3	172.6	4,900*			
200	80	240	34.4	161.2	6,200*	36.7	157.9	4,500*			
200	80	250	30.5	144.5	5,600*						
200	80	260	25.9	124.7	4,800*						
200	100	60	80.8	304.3	9,800*						
200	100	70	78.9	302.2	9,500*						
200	100	80	76.9	299.8	9,200*	80.1	297.7	8,300*			
200	100	90	75.0	297.0	8,900*	78.2	294.9	8,100*	81.2	290.6	7,400*
200	100	100	73.0	293.8	8,600*	76.1	291.7	7,900*	79.1	287.4	7,300*
200	100	110	71.0	290.2	8,300*	74.1	288.0	7,700*	77.1	283.7	7,100*
200	100	120	68.9	286.2	8,100*	72.1	284.0	7,500*	75.0	279.6	6,500*
200	100	130	66.9	281.8	7,900*	70.0	279.6	7,300*	72.9	275.1	5,800*
200	100	140	64.8	277.0	7,700*	67.8	274.7	7,200*	70.7	270.2	5,200*
200	100	150	62.6	271.7	7,500*	65.7	269.4	6,800*	68.5	264.7	4,600*
200	100	160	60.4	265.9	7,300*	63.5	263.5	6,100*	66.2	258.7	4,100*
200	100	170	58.2	259.5	7,200*	61.2	257.1	5,600*	63.9	252.2	3,700*
200	100	180	55.9	252.6	6,800*	58.9	250.1	5,000*	61.6	245.1	3,300*
200	100	190	53.5	245.1	6,100*	56.5	242.5	4,600*	59.1	237.3	3,000*
200	100	200	51.0	236.9	5,700*	54.0	234.2	4,300*	56.6	228.8	2,700*
200	100	210	48.5	227.9	5,300*	51.4	225.1	3,800*	53.9	219.5	2,500*
200	100	220	45.8	218.1	5,000*	48.7	215.2	3,600*	51.2	209.3	2,200*
200	100	230	43.0	207.3	4,600*	45.9	204.2	3,300*	48.2	198.0	2,100*
200	100	240	40.1	195.3	4,300*	42.9	192.0	3,100*			
200	100	250	36.9	182.0	4,000*	39.7	178.4	2,900*			
200	100	260	33.5	166.9	3,700*	36.1	163.0	2,700*			
200	100	270	29.7	149.5	3,500*						
200	100	280	25.3	128.9	3,300*						
220	40	50	80.5	265.6	36,000*	82.0	264.6	35,900*			
220	40	60	78.3	263.6	36,000*	79.7	262.6	35,700*	81.1	260.5	34,600*
220	40	70	76.0	261.2	36,000*	77.5	260.1	35,400*	78.8	258.0	33,200*
220	40	80	73.8	258.4	36,000*	75.2	257.3	34,700*	76.5	255.1	31,300*
220	40	90	71.5	255.1	33,200	72.9	254.0	32,200*	74.2	251.8	27,800*
220	40	100	69.1	251.3	28,400	70.5	250.2	28,500*	71.8	248.0	24,700*



## Tubular Jib Capacities

Boom Length (feet)	Jib Length (feet)	Jib Load Radius (feet)	Jib Angle to Boom								
			5 Degrees			15 Degrees			25 Degrees		
			Boom Angle (deg)	Jib Pt. Height (feet)	ABC+ A Cwt. (lbs.)	Boom Angle (deg)	Jib Pt. Height (feet)	ABC+ A Cwt. (lbs.)	Boom Angle (deg)	Jib Pt. Height (feet)	ABC+ A Cwt. (lbs.)
220	40	110	66.8	247.1	24,600	68.2	246.0	25,100	69.4	243.8	21,500*
220	40	120	64.3	242.4	21,800	65.7	241.3	21,700*	67.0	239.0	19,100*
220	40	130	61.9	237.2	19,200	63.3	236.0	19,600	64.5	233.7	17,400*
220	40	140	59.3	231.4	17,000	60.7	230.2	17,300	61.9	227.8	15,600*
220	40	150	56.7	224.9	15,100	58.1	223.7	15,400	59.3	221.2	14,100*
220	40	160	54.1	217.9	13,400	55.4	216.6	13,700	56.5	214.0	12,800*
220	40	170	51.3	210.0	12,000	52.6	208.7	12,200	53.7	206.0	11,600*
220	40	180	48.4	201.4	10,700	49.7	200.0	10,900	50.8	197.2	10,600*
220	40	190	45.4	191.7	9,600	46.7	190.3	9,800	47.7	187.3	9,600*
220	40	200	42.2	181.0	8,500*	43.4	179.5	8,700			
220	40	210	38.7	169.0	7,400*	40.0	167.3	7,600*			
220	40	220	35.0	155.3	6,400*	36.2	153.4	6,600*			
220	40	230	30.9	139.4	5,400*						
220	40	240	26.3	120.5	4,600*						
220	60	50	81.5	285.9	26,900*						
220	60	60	79.5	284.0	26,700*	81.5	282.6	26,000*			
220	60	70	77.4	281.8	26,600*	79.4	280.3	25,600*	81.3	277.4	21,500*
220	60	80	75.3	279.1	26,400*	77.3	277.7	25,100*	79.2	274.7	21,300*
220	60	90	73.2	276.1	24,300*	75.2	274.6	23,300*	77.1	271.6	18,900*
220	60	100	71.0	272.7	21,700*	73.0	271.2	20,800*	74.9	268.1	16,700*
220	60	110	68.8	268.8	20,100*	70.8	267.3	18,700*	72.7	264.2	14,900*
220	60	120	66.6	264.5	18,700*	68.6	262.9	16,800*	70.4	259.8	13,000*
220	60	130	64.4	259.7	17,400*	66.3	258.1	15,300*	68.1	254.9	11,700*
220	60	140	62.1	254.4	16,200*	64.0	252.8	13,800*	65.8	249.5	10,400*
220	60	150	59.7	248.6	14,900*	61.7	247.0	12,600*	63.4	243.6	9,500*
220	60	160	57.3	242.3	13,600*	59.2	240.5	11,200*	60.9	237.1	8,400*
220	60	170	54.9	235.3	12,300	56.7	233.5	10,200*	58.4	229.9	7,500*
220	60	180	52.3	227.6	11,100	54.2	225.8	9,400*	55.8	222.1	6,900*
220	60	190	49.6	219.2	9,900	51.5	217.3	8,600*	53.0	213.4	6,200*
220	60	200	46.9	209.9	8,900	48.7	207.9	7,800*	50.2	203.9	5,700*
220	60	210	44.0	199.7	7,900*	45.8	197.6	7,100*	47.2	193.3	5,200*
220	60	220	40.9	188.3	6,900*	42.7	186.1	6,600*			
220	60	230	37.6	175.6	6,000*	39.3	173.2	6,200*			
220	60	240	34.1	161.2	5,100*	35.7	158.6	5,400*			
220	60	250	30.1	144.6	4,300*						
220	60	260	25.6	124.8	3,600*						
220	80	60	80.5	304.4	17,700*						
220	80	70	78.6	302.3	17,400*	81.1	300.4	16,300*			
220	80	80	76.6	299.8	17,100*	79.2	298.0	15,900*	81.6	294.3	14,400*
220	80	90	74.6	297.0	16,800*	77.2	295.2	15,500*	79.6	291.4	12,900*
220	80	100	72.7	293.8	16,500*	75.2	291.9	15,100*	77.5	288.2	11,300*
220	80	110	70.6	290.3	15,300*	73.1	288.3	13,500*	75.5	284.5	10,000*
220	80	120	68.6	286.3	14,200*	71.1	284.3	12,200*	73.4	280.5	8,900*
220	80	130	66.5	281.9	13,200*	69.0	279.9	11,000*	71.3	276.0	8,000*
220	80	140	64.4	277.0	12,200*	66.9	275.0	9,800*	69.1	271.0	7,000*
220	80	150	62.3	271.7	11,100*	64.7	269.7	8,900*	66.9	265.6	6,200*
220	80	160	60.1	265.9	10,200*	62.5	263.8	8,000*	64.7	259.6	5,600*

# STERLING CRANE

Boom Length (feet)	Jib Length (feet)	Jib Load Radius (feet)	Jib Angle to Boom								
			5 Degrees			15 Degrees			25 Degrees		
			Boom Angle (degree)	Jib Pt. Height (feet)	ABC+ A Cwt. (lbs.)	Boom Angle (degree)	Jib Pt. Height (feet)	ABC+ A Cwt. (lbs.)	Boom Angle (degree)	Jib Pt. Height (feet)	ABC+ A Cwt. (lbs.)
220	80	170	57.8	259.6	9,300*	60.2	257.4	7,300*	62.4	253.2	5,100*
220	80	180	55.5	252.7	8,500*	57.9	250.5	6,600*	60.0	246.1	4,500*
220	80	190	53.2	245.1	7,800*	55.5	242.9	6,100*	57.6	238.3	4,100*
220	80	200	50.7	236.9	7,200*	53.0	234.6	5,600*	55.0	229.8	3,700*
220	80	210	48.2	228.0	6,600*	50.5	225.5	5,000*	52.4	220.6	3,400*
220	80	220	45.5	218.1	6,200*	47.8	215.6	4,600*	49.6	210.4	3,100*
220	80	230	42.7	207.3	5,700*	45.0	204.6	4,300*	46.7	199.2	2,900*
220	80	240	39.8	195.4	5,300*	42.0	192.5	4,000*			
220	80	250	36.6	182.0	4,700*	38.7	178.9	3,700*			
220	80	260	33.2	167.0	4,000*	35.2	163.5	3,500*			
220	80	270	29.4	149.6	3,400*						
220	80	280	25.0	129.0	2,700*						
220	100	60	81.4	324.7	9,900*						
220	100	70	79.6	322.7	9,600*						
220	100	80	77.8	320.4	9,300*	80.8	318.3	8,300*			
220	100	90	75.9	317.8	9,000*	78.9	315.6	8,100*	81.8	311.3	7,400*
220	100	100	74.1	314.8	8,800*	77.0	312.6	8,000*	79.9	308.3	7,300*
220	100	110	72.2	311.5	8,500*	75.2	309.3	7,800*	77.9	304.9	7,000*
220	100	120	70.3	307.8	8,300*	73.3	305.6	7,600*	76.0	301.1	6,100*
220	100	130	68.4	303.7	8,100*	71.3	301.4	7,400*	74.0	296.9	5,400*
220	100	140	66.4	299.2	7,900*	69.4	296.9	6,900*	72.0	292.3	4,900*
220	100	150	64.5	294.3	7,700*	67.4	292.0	6,300*	70.0	287.3	4,300*
220	100	160	62.4	289.0	7,300*	65.3	286.6	5,700*	67.9	281.8	3,800*
220	100	170	60.4	283.2	6,700*	63.2	280.7	5,100*	65.8	275.8	3,400*
220	100	180	58.3	276.9	6,200*	61.1	274.4	4,700*	63.7	269.4	3,000*
220	100	190	56.1	270.1	5,700*	58.9	267.5	4,300*	61.5	262.3	2,700*
220	100	200	53.9	262.7	5,200*	56.7	260.0	3,800*	59.2	254.7	2,500*
220	100	210	51.6	254.6	4,800*	54.4	251.9	3,600*	56.8	246.4	2,200*
220	100	220	49.3	245.9	4,400*	52.0	243.1	3,200*	54.4	237.4	2,000*
220	100	230	46.8	236.4	4,100*	49.5	233.4	3,000*			
220	100	240	44.3	226.0	3,800*	46.9	222.9	2,800*			
220	100	250	41.6	214.7	3,600*	44.2	211.4	2,500*			
220	100	260	38.7	202.2	3,300*	41.3	198.7	2,400*			
220	100	270	35.7	188.2	3,100*	38.2	184.4	2,200*			
220	100	280	32.3	172.5	2,900*						
220	100	290	28.7	154.4	2,500*						
240	40	50	81.2	285.9	36,000*						
240	40	60	79.1	284.1	36,000*	80.5	283.0	35,800*	81.7	280.9	34,600*
240	40	70	77.0	281.8	36,000*	78.4	280.8	34,300*	79.6	278.6	30,700*
240	40	80	74.9	279.2	32,500*	76.3	278.1	30,400*	77.5	276.0	27,400*
240	40	90	72.8	276.2	28,900*	74.2	275.1	27,100*	75.4	272.9	24,100*
240	40	100	70.7	272.7	26,000*	72.0	271.6	24,300*	73.2	269.4	20,600*
240	40	110	68.5	268.9	23,600*	69.8	267.7	21,100*	71.0	265.5	18,600*
240	40	120	66.3	264.6	20,600*	67.6	263.4	19,100*	68.8	261.1	16,500*
240	40	130	64.0	259.8	18,600	65.3	258.6	17,200*	66.5	256.3	15,000*
240	40	140	61.7	254.5	16,400	63.0	253.3	15,700*	64.1	251.0	13,500*
240	40	150	59.4	248.7	14,500	60.7	247.5	14,100*	61.8	245.1	12,200*

## Tubular Jib Capacities

Boom Length (feet)	Jib Length (feet)	Jib Load Radius (feet)	Jib Angle to Boom								
			5 Degrees			15 Degrees			25 Degrees		
			Boom Angle (deg)	Jib Pt. Height (feet)	ABC+ A Cwt. (lbs.)	Boom Angle (deg)	Jib Pt. Height (feet)	ABC+ A Cwt. (lbs.)	Boom Angle (deg)	Jib Pt. Height (feet)	ABC+ A Cwt. (lbs.)
240	40	160	57.0	242.3	12,800	58.2	241.1	12,900*	59.3	238.6	11,000*
240	40	170	54.5	235.3	11,400	55.8	234.0	11,600	56.8	231.5	9,900*
240	40	180	51.9	227.7	10,100	53.2	226.3	10,300	54.2	223.7	9,000*
240	40	190	49.3	219.2	8,900*	50.5	217.9	9,200	51.5	215.1	8,300*
240	40	200	46.5	210.0	7,600*	47.7	208.5	7,900*	48.7	205.6	7,500*
240	40	210	43.6	199.8	6,500*	44.8	198.2	6,800*	45.7	195.2	6,900*
240	40	220	40.6	188.4	5,500*	41.7	186.8	5,700*			
240	40	230	37.3	175.7	4,600*	38.4	174.0	4,800*			
240	40	240	33.7	161.3	3,700*						
240	40	250	29.8	144.7	3,000*						
240	40	260	25.3	124.9	2,200*						
240	60	60	80.2	304.4	26,800*						
240	60	70	78.2	302.3	26,600*	80.1	300.8	25,700*	81.9	297.8	21,700*
240	60	80	76.3	299.9	25,300*	78.2	298.4	23,500*	80.0	295.4	19,100*
240	60	90	74.3	297.1	23,300*	76.2	295.5	20,600*	78.0	292.5	17,000*
240	60	100	72.3	293.9	20,800*	74.2	292.3	18,400*	75.9	289.3	15,000*
240	60	110	70.3	290.3	18,800*	72.2	288.7	16,500*	73.9	285.6	13,400*
240	60	120	68.3	286.3	17,000*	70.1	284.7	14,900*	71.8	281.6	11,800*
240	60	130	66.2	281.9	15,300*	68.0	280.3	13,300*	69.7	277.1	10,500*
240	60	140	64.1	277.1	14,100*	65.9	275.4	12,000*	67.6	272.2	9,300*
240	60	150	61.9	271.8	12,700*	63.8	270.1	10,900*	65.4	266.8	8,400*
240	60	160	59.8	266.0	11,500*	61.6	264.3	9,900*	63.1	260.9	7,400*
240	60	170	57.5	259.6	10,600*	59.3	257.9	9,000*	60.8	254.4	6,800*
240	60	180	55.2	252.7	9,600*	57.0	250.9	8,200*	58.5	247.3	6,000*
240	60	190	52.8	245.2	8,800*	54.6	243.3	7,400*	56.1	239.6	5,500*
240	60	200	50.4	237.0	8,000*	52.1	235.1	6,800*	53.6	231.2	5,100*
240	60	210	47.8	228.0	7,000*	49.5	226.0	6,100*	50.9	222.0	4,600*
240	60	220	45.2	218.2	6,000*	46.9	216.1	5,700*	48.2	211.9	4,200*
240	60	230	42.4	207.4	5,100*	44.0	205.2	5,200*	45.3	200.7	3,900*
240	60	240	39.4	195.4	4,300*	41.0	193.1	4,600*			
240	60	250	36.3	182.1	3,500*	37.8	179.6	3,700*			
240	60	260	32.8	167.0	2,800*						
240	60	270	29.0	149.7	2,100*						
240	80	60	81.1	324.7	17,800*						
240	80	70	79.3	322.7	17,500*	81.7	320.9	16,400*			
240	80	80	77.5	320.5	17,300*	79.8	318.6	16,000*			
240	80	90	75.6	317.8	17,000*	78.0	315.9	15,400*	80.2	312.2	12,000*
240	80	100	73.8	314.9	16,100*	76.1	312.9	13,600*	78.3	309.1	10,600*
240	80	110	71.9	311.5	14,600*	74.2	309.6	12,200*	76.4	305.7	9,400*
240	80	120	70.0	307.8	13,100*	72.3	305.9	11,000*	74.5	302.0	8,200*
240	80	130	68.1	303.8	12,000*	70.4	301.8	9,900*	72.5	297.8	7,300*
240	80	140	66.1	299.3	10,800*	68.4	297.3	8,900*	70.6	293.2	6,400*
240	80	150	64.2	294.4	10,000*	66.4	292.3	8,000*	68.5	288.2	5,800*
240	80	160	62.1	289.0	9,100*	64.4	286.9	7,200*	66.5	282.8	5,100*
240	80	170	60.1	283.2	8,300*	62.3	281.1	6,600*	64.4	276.8	4,500*
240	80	180	58.0	276.9	7,500*	60.2	274.7	5,900*	62.2	270.4	4,100*
240	80	190	55.8	270.1	6,900*	58.1	267.9	5,400*	60.0	263.4	3,700*

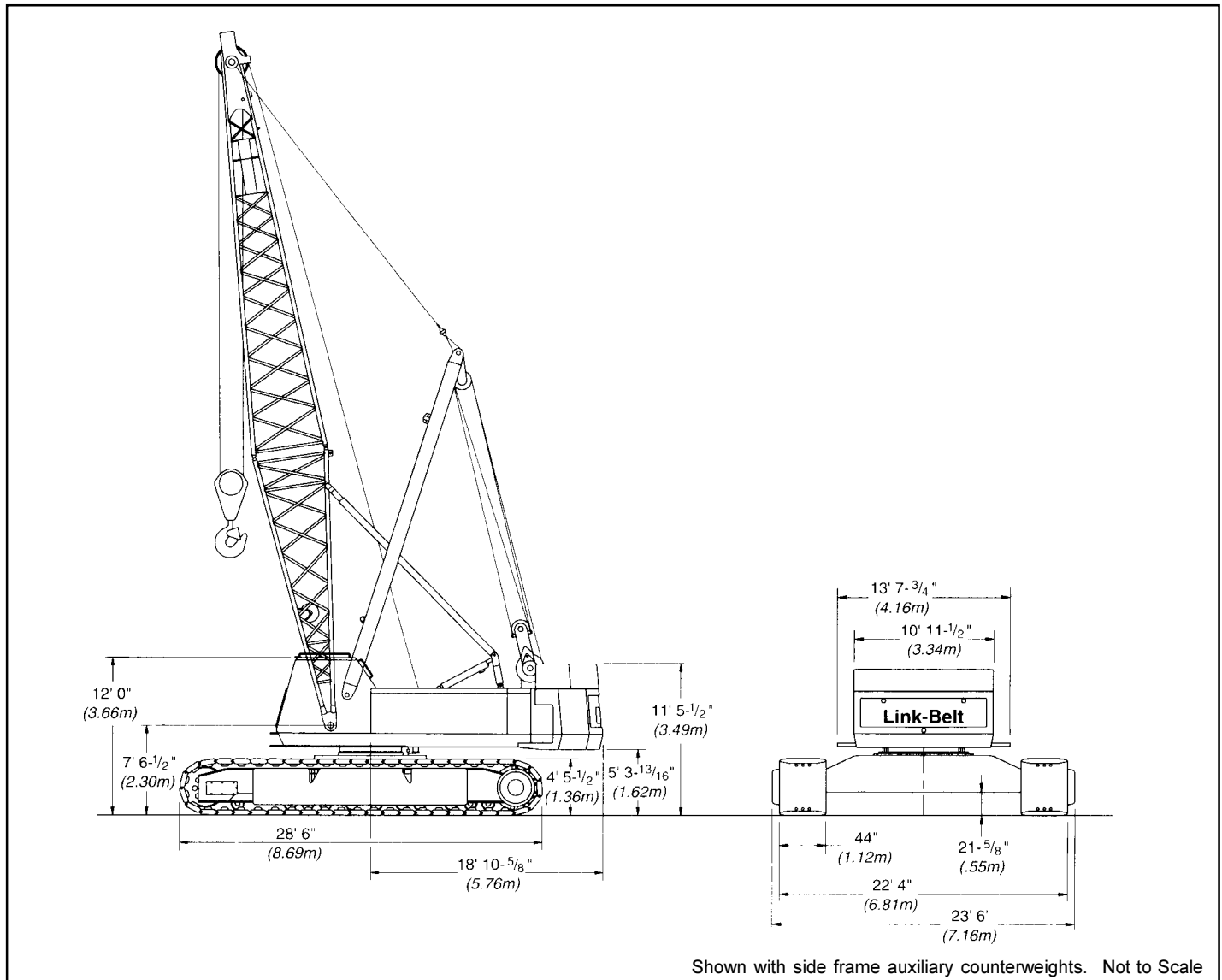
# STERLING CRANE

Boom Length (feet)	Jib Length (feet)	Jib Load Radius (feet)	Jib Angle to Boom								
			5 Degrees			15 Degrees			25 Degrees		
			Boom Angle (degree)	Jib Pt. Height (feet)	ABC+ A Cwt. (lbs.)	Boom Angle (degree)	Jib Pt. Height (feet)	ABC+ A Cwt. (lbs.)	Boom Angle (degree)	Jib Pt. Height (feet)	ABC+ A Cwt. (lbs.)
240	80	200	53.6	262.7	6,300*	55.8	260.4	5,000*	57.7	255.8	3,300*
240	80	210	51.3	254.7	5,700*	53.5	252.3	4,500*	55.4	247.5	3,100*
240	80	220	49.0	245.9	5,300*	51.1	243.5	4,100*	53.0	238.5	2,800*
240	80	230	46.5	236.5	4,800*	48.7	233.9	3,800*	50.4	228.7	2,500*
240	80	240	44.0	226.1	4,500*	46.1	223.4	3,400*	47.8	218.0	2,300*
240	80	250	41.3	214.7	3,900*	43.3	211.9	3,200*			
240	80	260	38.4	202.2	3,200*	40.4	199.2	2,900*			
240	80	270	35.4	188.3	2,500*	37.3	185.0	2,800*			
240	100	60	81.9	345.0	9,900*						
240	100	70	80.2	343.1	9,700*						
240	100	80	78.5	341.0	9,400*	81.3	338.8	8,400*			
240	100	90	76.8	338.5	9,200*	79.6	336.3	8,200*			
240	100	100	75.0	335.7	8,900*	77.8	333.5	8,000*	80.5	329.0	7,300*
240	100	110	73.3	332.6	8,600*	76.1	330.3	7,900*	78.7	325.8	6,600*
240	100	120	71.5	329.2	8,400*	74.3	326.9	7,700*	76.9	322.3	5,800*
240	100	130	69.7	325.4	8,200*	72.5	323.0	7,100*	75.1	318.4	5,000*
240	100	140	67.9	321.2	8,000*	70.7	318.8	6,400*	73.2	314.2	4,500*
240	100	150	66.1	316.6	7,300*	68.8	314.2	5,800*	71.3	309.5	4,000*
240	100	160	64.2	311.7	6,700*	66.9	309.3	5,200*	69.4	304.4	3,500*
240	100	170	62.3	306.3	6,100*	65.0	303.9	4,600*	67.5	298.9	3,100*
240	100	180	60.4	300.5	5,500*	63.0	298.0	4,200*	65.5	293.0	2,800*
240	100	190	58.4	294.2	5,100*	61.1	291.7	3,800*	63.4	286.5	2,500*
240	100	200	56.4	287.5	4,700*	59.0	284.8	3,500*	61.4	279.6	2,200*
240	100	210	54.3	280.2	4,300*	56.9	277.5	3,200*	59.2	272.1	2,000*
240	100	220	52.2	272.3	3,900*	54.8	269.5	2,900*			
240	100	230	50.0	263.8	3,600*	52.5	260.9	2,700*			
240	100	240	47.7	254.6	3,400*	50.2	251.6	2,400*			
240	100	250	45.3	244.6	3,000*	47.8	241.5	2,200*			
240	100	260	42.8	233.7	2,800*	45.3	230.5	2,100*			
240	100	270	40.2	221.8	2,700*						
240	100	280	37.5	208.8	2,200*						

## Tubular Jib Capacity Notes:

- Capacities are for an LS-248H 1 with "ABC" (96,430 lbs. - 43 741 kg) upper counterweight, "A" (48,000 lbs. - 21 773 kg) lower auxiliary counterweight, 30' (9.14 m) live mast, and 1" (25 mm) diameter pendants.
- Capacities are shown in thousands of pounds and are not more than 75% of the tipping loads with the machine standing level on a firm supporting surface.
- Capacities are limited to a Link-Belt 68" x 80" (1.73 x 2.03 m) cross-section open throat tube boom and a 24" x 32" (.61 x .81 m) cross-section tube jib with a jib strut properly assembled.
- Two parts of 1" (25 mm) diameter L-BS Type "RB" wire rope are required for maximum lift.
- Capacities are for 30' (9.14 m) thru 100' (30.48 m) jib lengths.
- The maximum boom and jib combination is 240' (73.15 m) boom + 100' (30.48 m) jib.
- The least stable condition is over the side.
- Booms must be erected and lowered over the end.
- Those capacities followed by an asterisk (\*) are governed by factors other than those that would cause a tipping condition.
- A deduction must be made from the jib capacities for weights of hook blocks, hooks, slings, grapples, load weighing devices, etc.
- When using the main hook, while a jib is attached, reduce the main boom capacities by the following values:
  - 30' (9.14 m) jib - 2,600 lbs. (1 179 kg)
  - 40' (12.19 m) jib - 3,000 lbs. (1 361 kg)
  - 50' (15.24 m) jib - 3,400 lbs. (1 542 kg)
  - 60' (18.29 m) jib - 3,800 lbs. (1 724 kg)
  - 70' (21.34 m) jib - 4,200 lbs. (1 905 kg)
  - 80' (24.38 m) jib - 4,600 lbs. (2 087 kg)
  - 90' (27.43 m) jib - 5,000 lbs. (2 268 kg)
  - 100' (30.48 m) jib - 5,400 lbs. (2 449 kg)
- Refer to all notes on applicable lifting crane capacities in the crane rating manual in addition to these notes.
- These capacities apply only to the crane as originally manufactured and normally equipped by Link-Belt Construction Equipment Company.
- Not all jib capacity combinations shown refer to Crane Rating Manual.

# STERLING CRANE



Shown with side frame auxiliary counterweights. Not to Scale

General dimensions	feet	meters
Basic boom length	50	15.24
Overall width of machine with 44" (1.12 m) track shoes	22.5	6.85
Overall width of cab w/catwalks both sides	13.64	4.15
Overall width of cab less catwalks	10.95	3.34

General dimensions	feet	meters
Tailswing of counterweight "A"	16.80	5.12
Tailswing of counterweight "AB"	18.89	5.76
Tailswing of counterweight "ABC"	18.89	5.76
Overall height for transport w/boom base	13.31	4.05
Overall height for transport w/live mast only	13.31	4.05