

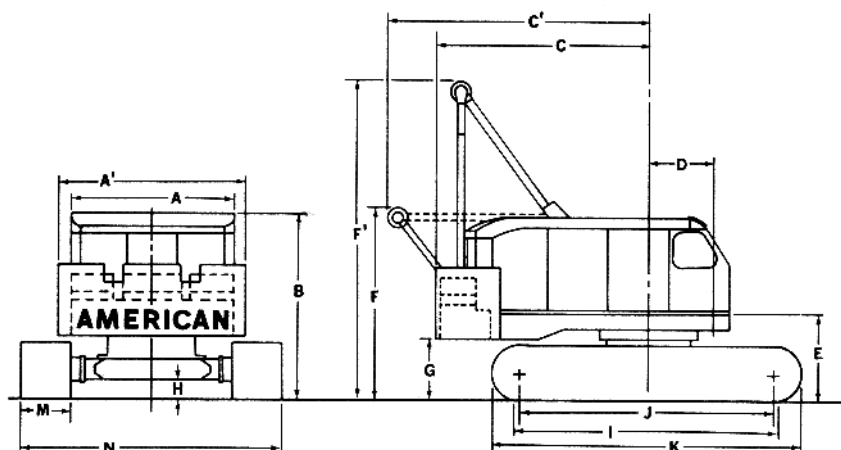


## TRANSPORTATION SPECS - Crawler Cranes

### AMERICAN MODEL 7260 - 100 TON CAPACITY

<u>COMPONENT WEIGHTS</u>	<u>LBS.</u>	<u>KGS.</u>	<u>BOOM TYPE 59S</u>	<u>LBS.</u>	<u>KGS.</u>
Complete Crane c/w 40' HH Boom (incl. Block & ball)	183,350	83 190	OD (tubular) 59½ x 59½		
			<b><u>HAMMERHEAD – 40' MIN / 150' MAX</u></b>		
Crane c/w tracks & butt (1)	128,000	58 076	Butt 20'	2,400	1 089
House, carbody, butt, gantry & cable	72,000	32 668	Transition 20' c/w pendants & HH	2,800	1 270
Counterweight	50,000	22 686			
			<b><u>TAPERED TIP 60' MIN / 200' MAX</u></b>		
Track 44" shoes (2) each	28,000	12 704	Butt 20'	2,400	1 089
			Transition 20' c/w pendants	1,430	649
			Tapered tip 20' c/w pendants	2,205	1 000
<b><u>ADDITIONAL INFORMATION</u></b>			Insert 10' c/w pendants	950	431
100 Ton Block	1,900	862	Insert 20' c/w pendants	1,700	772
15 Ton Ball	650	295	Insert 40' c/w pendants	2,950	1 339
Carbody	12,000	5 445	(See boom & jib section for composition details)		
Axles (4) each	1,975	896	<b><u>JIB NO. 9HL 60' MAX</u></b>		
Drive couplings (2) each	420	191	(10' & 20' Sections)		
Outer Bail	965	438	OD (tubular) 27¾ x 27¾		
Main Load Line (1" x 850')	1,573	714	60' c/w pendants	2,100	953
Auxiliary Hoist Line (1" x 550')	1,018	462	<b><u>COUNTERWEIGHT</u></b>		
Boom Susp. Line (¾" x 430')	448	204	Main	50,000	22 686
<b><u>TRANSPORTATION</u></b>					
<b><u>Alberta and Saskatchewan</u></b>					
• Spring	(1)	64 wh			
• Summer	(1)	48 wh			
• Winter	(1)	36 wh			
This crane is normally hauled in the following configuration:					
1. House, carbody, butt, gantry and cables.					
2. Track, track and boom.					
3. Counterweight.					
4. Boom (can be 2 wide and 2 high).					
Crane can be shipped complete with tracks on for short hauls and road restrictions permitting. Will require minimum 2 pilots (17'-2" wide when loaded length-ways and 19'-8" wide when loaded cross-ways).					

# STERLING CRANE



## GENERAL DIMENSIONS

	Ft.	M		Ft.	M
A. Width of cab	10' 6"	3.192	J. Center to center crawler tumbler	16' 4"	4.972
A1. Width over counterweight	11' 11 1/2"	3.642	K. Overall length of crawlers	19' 6 1/2"	5.955
B. Height over cab	11' 10"	3.604	M. Width of tread shoes (standard)	38"	.966
C. Tailswing	14' 9"	4.489	M. Width of tread shoes (Optional)	44" or 50"	1.118 or
C1. Tailswing with A-frame retracted	16' 9 1/2"	5.112	N. Overall width over crawlers		1.271
D. Center of pivot to center of crane boom foot	4' 1 1/2"	1.248	Extended (with 38" shoes)	16' 8"	5.073
E. Ground to center of crane boom foot	5' 6"	1.672	Extended (with 44" shoes)	17' 2"	5.230
F. Height over A-frame in retracted position	12' 2"	3.700	Extended (with 50" shoes)	17' 8"	5.383
F1. Height over A-frame in raised position	20' 7"	8.220	N. Width with side frames removed (over crawler axles)	11' 0"	3.353
G. Ground to bottom of counterweight	3' 11"	1.189	O. Overall length of cab and counterweight	19' 8"	5.993
H. Minimum ground clearance under crawler base	14"	.355			
I. Crawler bearing length	17' 2 1/2"	5.243			

# STERLING CRANE

## AMERICAN 59S TAPERED TIP BOOM COMPOSITION

Boom Length In Feet	20 Ft. 59H Inner	10 Ft. 59S Center	20 Ft. 59S Center	40 Ft. 59S Center	20 Ft. 59S Outer Base	20 Ft. 59SH Tapered Tip
60	1	-	-	-	1	1
70	1	1	-	-	1	1
80	1	-	1	-	1	1
90	1	1	1	-	1	1
100	1	-	-	1	1	1
110	1	1	-	1	1	1
120	1	-	1	1	1	1
130	1	1	1	1	1	1
140	1	-	-	2	1	1
150	1	1	-	2	1	1
160	1	-	1	2	1	1
170	1	1	1	2	1	1
180	1	-	-	3	1	1
190	1	1	-	3	1	1
200	1	-	1	3	1	1

# STERLING CRANE

## AMERICAN 59S HAMMERHEAD BOOM COMPOSITION

Boom Length In Feet	20 Ft. 59H Inner	10 Ft. 59S Center	20 Ft. 59S Center	40 Ft. 59S Center	20 Ft. 59S Outer Base	Hammer-Head
40	1	-	-	-	1	1
50	1	1	-	-	1	1
60	1	-	1	-	1	1
70	1	1	1	-	1	1
80	1	-	-	1	1	1
90	1	1	-	1	1	1
100	1	-	1	1	1	1
110	1	1	1	1	1	1
120	1	-	-	2	1	1
130	1	1	-	2	1	1
140	1	-	1	2	1	1
150	1	1	1	2	1	1

# STERLING CRANE

## AMERICAN 59H TUBULAR TAPERED TIP BOOM COMPOSITION

Boom Length In Feet	20 Ft. 59SH Inner	10 Ft. 59H Center	20 Ft. 59H Center	40 Ft. 59H Center	20 Ft. 59H Outer Base	20 Ft. 59SH Tapered Tip
60	1	-	-	-	1	1
70	1	1	-	-	1	1
80	1	-	1	-	1	1
90	1	1	1	-	1	1
100	1	-	-	1	1	1
110	1	1	-	1	1	1
120	1	-	1	1	1	1
130	1	1	1	1	1	1
140	1	-	-	2	1	1
150	1	1	-	2	1	1
160	1	-	1	2	1	1
170	1	1	1	2	1	1
180	1	-	-	3	1	1
190	1	1	-	3	1	1
200	1	-	1	3	1	1

# STERLING CRANE

## AMERICAN 59H TUBULAR HAMMERHEAD BOOM COMPOSITION

Boom Length In Feet	20 Ft. 59SH Inner	10 Ft. 59H Center	20 Ft. 59H Center	40 Ft. 59H Center	20 Ft. 59H Outer Base	Hammer-Head
40	1	-	-	-	1	1
50	1	1	-	-	1	1
60	1	-	1	-	1	1
70	1	1	1	-	1	1
80	1	-	-	1	1	1
90	1	1	-	1	1	1
100	1	-	1	1	1	1
110	1	1	1	1	1	1
120	1	-	-	2	1	1
130	1	1	-	2	1	1
140	1	-	1	2	1	1
150	1	1	1	2	1	1

Hammerhead Tip Offset 1.75'

# STERLING CRANE

## AMERICAN BOOM - SECTION WEIGHTS

Boom Sections c/w Pendants	47" S Tubular		59" S & H Tubular		77" S & H Tubular		92" HT & HD Tubular	
	LBS.	KGS.	LBS.	KGS.	LBS.	KGS.	LBS.	KGS.
Butt (Inner)	1,819	825	2,403	1 090	4,409	2 000	8,488	3 850
10 Foot	706	320	948	430	1,422	645	1,808	820
20 Foot	1,235	560	1,713	777	2,447	1 110	3,550	1 610
30 Foot	1,885	855						
40 Foot			2,921	1 325				
50 Foot					5,457	2 475	5,953	2 700
50 Foot XHD							7,297	3 310
Transition			1,433	650	2,999	1 360		
Taper Tip	2,095	950	2,205	1 000	3,417	1 550	11,133	5 050
Hammerhead			2,800	1 270	6,041	2 740		
Load Block			1,488	675 (60T)				

JIB SECTIONS		LBS.	KGS.
#7HL	30 Foot Basic Jib Assembly	1,259	570
	10' Section	199	90
	20' Section	386	175
#9HL	40 Foot Basic Jib Assembly	1,720	780
	10' Section	199	90
	20' Section	386	175
#15	30 Foot Basic Jib Assembly	1,951	885
	10' Section	298	135
#16HL	40 Foot Basic Jib Assembly	2,624	1 190
	10' Section	243	110
	20' Section	518	235
#30	25 Foot Basic Jib Assembly	TBD	TBD
	10' Section	TBD	TBD