

# STERLING CRANE



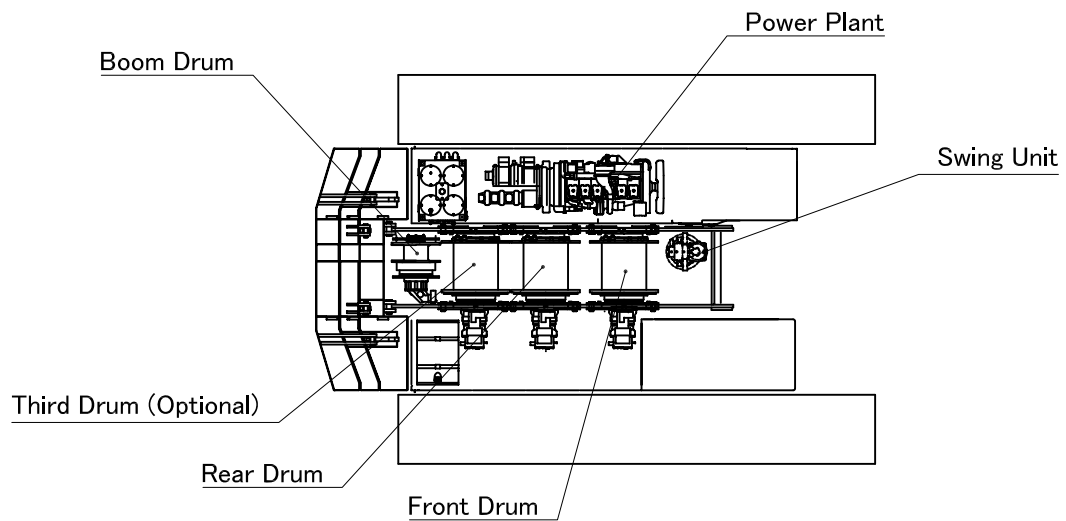
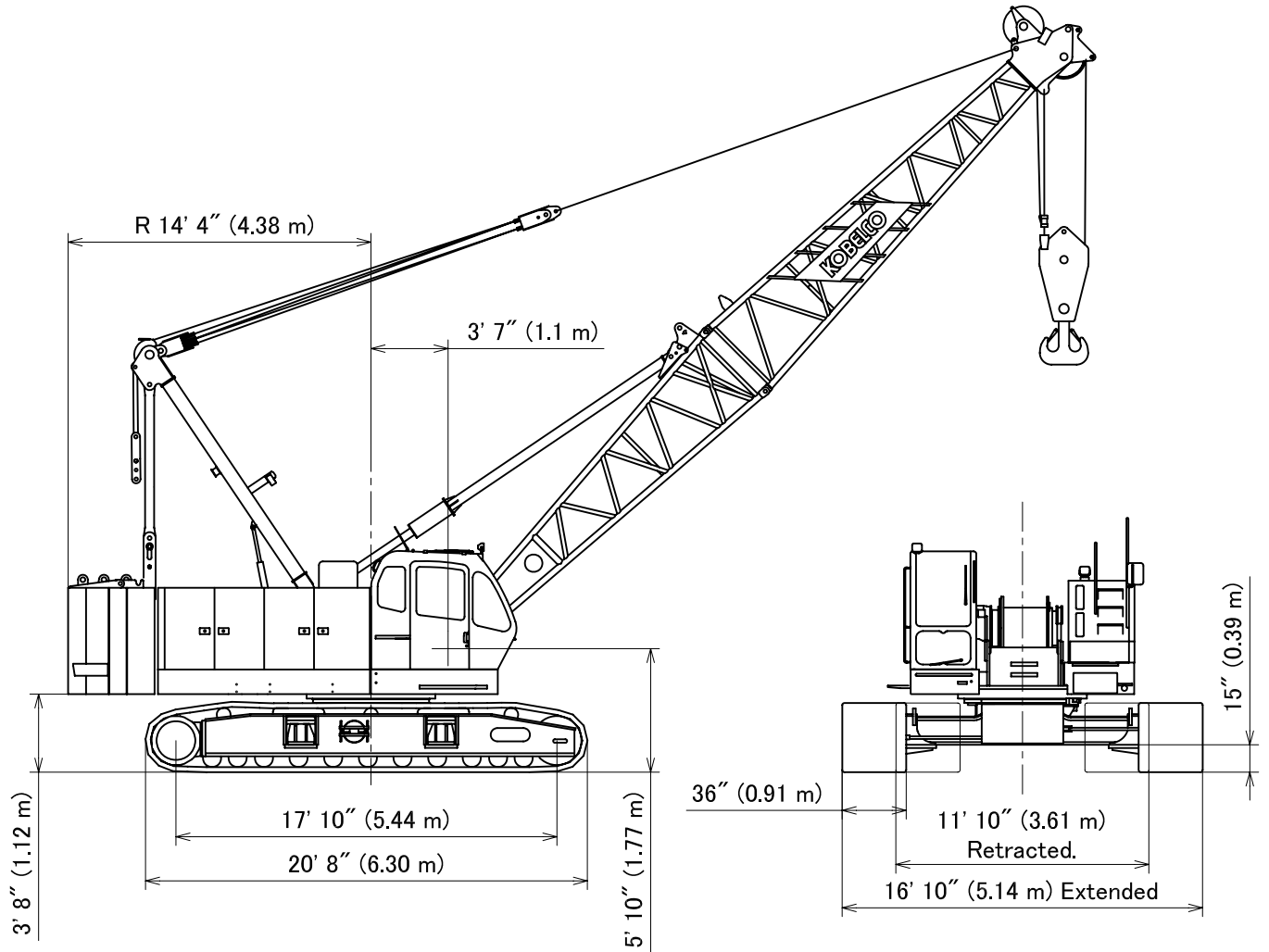
## TRANSPORTATION SPECS - Crawler Cranes

### KOBELCO MODEL CK1000-III - 100 TON CAPACITY

<u>COMPONENT WEIGHTS</u>	<u>LBS.</u>	<u>KGS.</u>	<u>BOOM 40' MIN / 200' MAX</u>	<u>LBS</u>	<u>KGS</u>
Complete Crane c/w 40' Boom, full ctwt, block & ball	195,841	88,833	OD 59" x 56" 20' Butt Section	3,250	1,474
House, carbody, Butt, gantry & tracks 40' x 11'6" x 9'9"	104,500	47,400	10' Insert c/w pendants 2pc. Ea	830	376
			20' Insert c/w pendants 2 pc. Ea	1,350	612
			40' Insert c/w lug & pendants 3 pc	2,440	1,107
			20' Tip Section	8,201	3,720
<b><u>COUNTERWEIGHTS:</u></b>					
UPPER:					
A Cwt (10'6" x 5'7" x 2'1") 1 pc.	26,630	12,079			
B Cwt (10'6" x 5'7" x 1'8") 1 pc.	16,250	7,371			
C Cwt (10'6" x 5'7" x 2'8") 1 pc	20,610	9,349			
Total Upper CWT	63,490	28,799			
Carbody Cwt (8'11" x 8'1" x 1'7") 2 pcs each	8,050	3,651	<b><u>FIXED JIB 30' MIN / 60' MAX</u></b> OD 31" x 36"		
			15' Butt Section c/w strut	1,310	594
Total Counterweight	79,590	36,102			
Tracks 36" Shoes 20'8" x 3' x 3'3" each	16,540	7,502	10' Insert c/w pendants 1 pc.	290	132
			20' Insert c/w pendants 1 pc.	490	222
			15' Tip Section	620	281
<b><u>ADDITIONAL INFORMATION</u></b>					
75 Ton Block, 4 Sheave	2,850	1,293			
13 Ton Ball	700	318			
Auxiliary Sheave 2'10" x 2'8"	430	195			

# STERLING CRANE

## General Dimensions



# STERLING CRANE

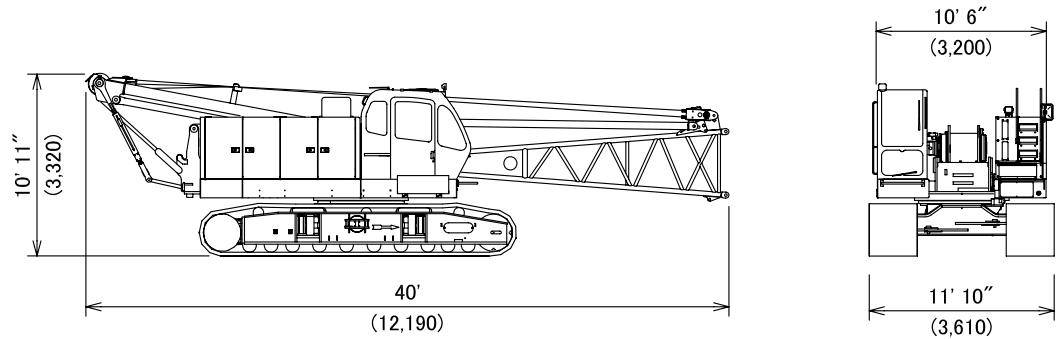
## Dimensions and Weight

Dimensions: ft-in (mm)    Weight: lbs (kg)

### Base Machine -1

Weight: 99,970 lbs (45,350 kg)

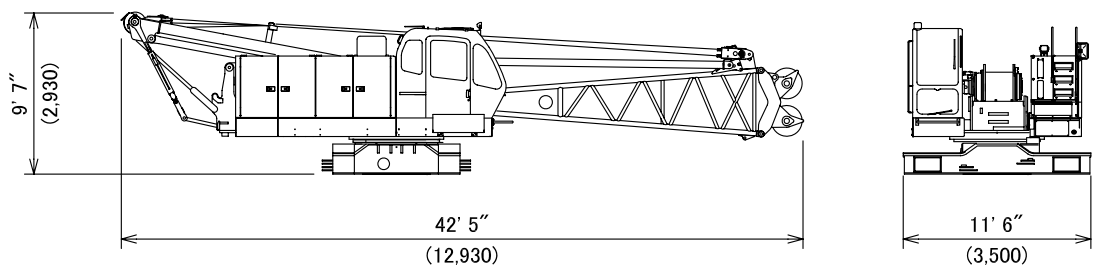
Boom base, Gantry, Crawler, Wire ropes (Front, Rear and Boom hoist drums)



### Base Machine -2

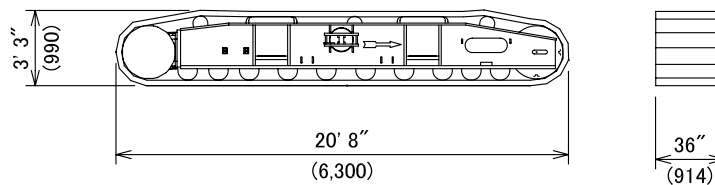
Weight: 71,420 lbs (32,400 kg)

Boom base, Auxiliary sheave for self-assembly, Wire ropes (Front, Rear and Boom hoist drums)



### Crawler

Weight: 16,540 lbs (7,500 kg)



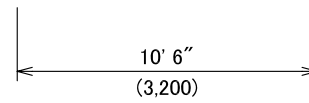
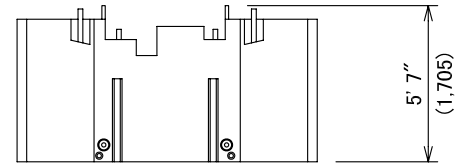
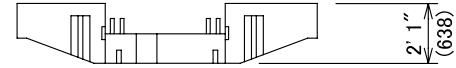
# STERLING CRANE

## Dimensions and Weight

Dimensions: ft-in (mm)    Weight: lbs (kg)

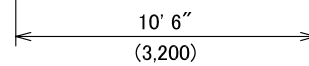
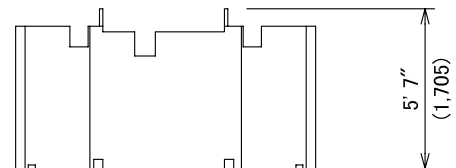
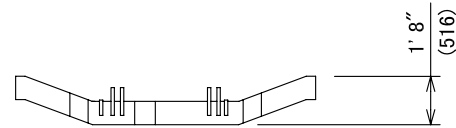
### Counterweight (A)

Weight: 26,630 lbs (12,070 kg)



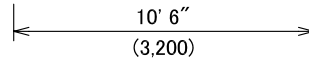
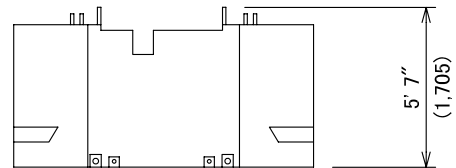
### Counterweight (B)

Weight: 16,250 lbs (7,370 kg)



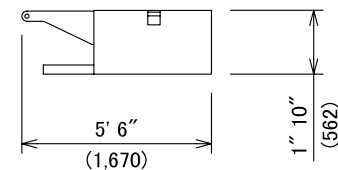
### Counterweight (C)

Weight: 20,610 lbs (9,350 kg)



### Carbody Weight

Weight: 8,050 lbs (3,650 kg)



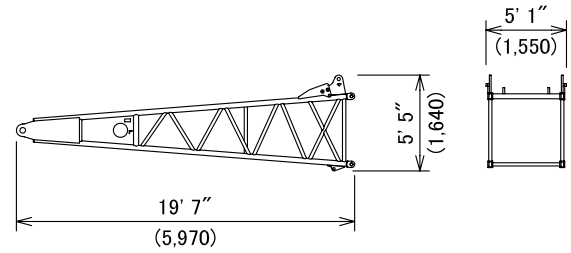
# STERLING CRANE

## Dimensions and Weight

Dimensions: ft-in (mm)    Weight: lbs (kg)

### Boom Base

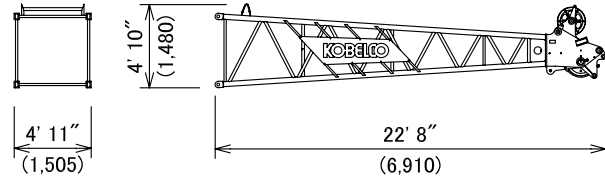
Weight: 3,250 lbs (1,475 kg)



### Boom Tip

Weight: 2,730 lbs (1,240 kg)

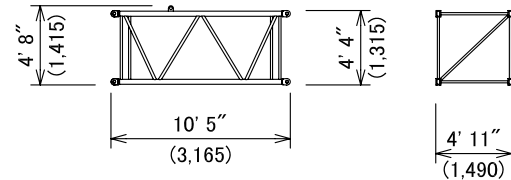
Includes cable roller and guy lines.



### 10 ft (3.0 m) Insert Boom

Weight: 830 lbs (380 kg)

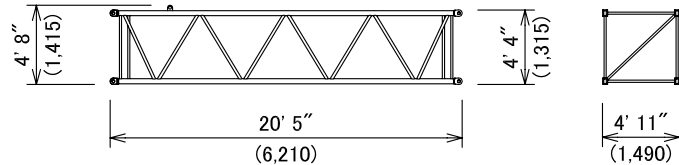
Includes cable roller and guy lines.



### 20 ft (6.1 m) Insert Boom

Weight: 1,350 lbs (610 kg)

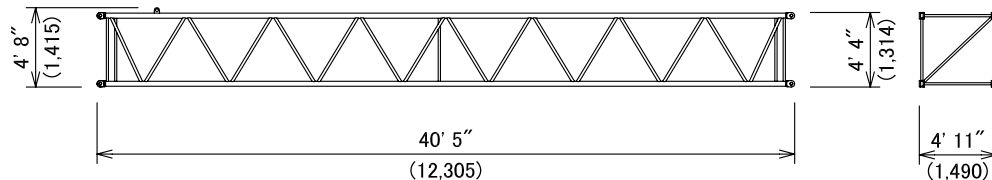
Includes cable roller and guy lines.



### 40 ft (12.2 m) Insert Boom

Weight: 2,410 lbs (1,090 kg)

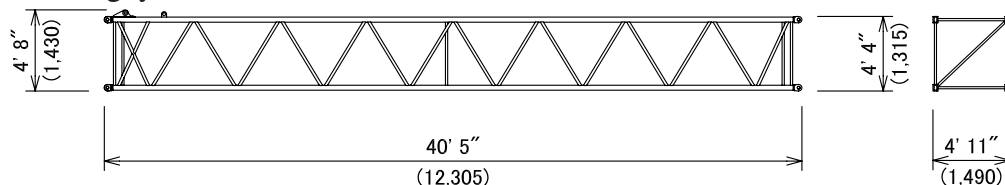
Includes cable roller and guy lines.



### 40 ft (12.2 m) Insert Boom (with lug)

Weight: 2,440 lbs (1,110 kg)

Includes cable roller and guy lines.



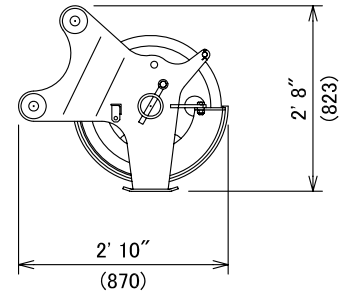
# STERLING CRANE

## Dimensions and Weight

Dimensions: ft-in (mm)    Weight: lbs (kg)

### Auxiliary Sheave

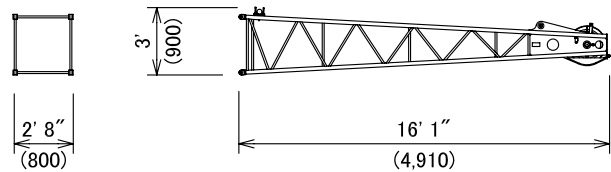
Weight: 430 lbs (195 kg)



### Jib Tip

Weight: 620 lbs (280 kg)

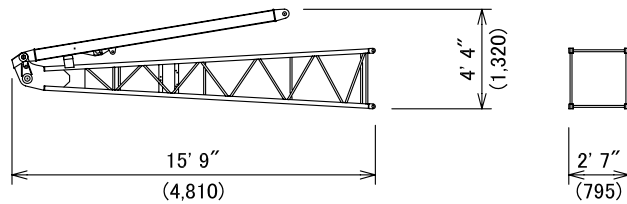
Includes cable roller.



### Jib Base and Strut

Weight: 1,310 lbs (590 kg)

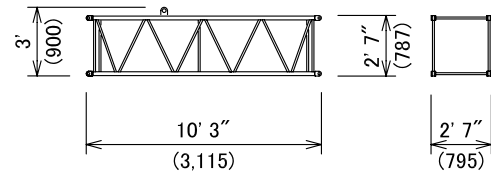
Includes guy line.



### 10 ft (3.0 m) Insert Jib

Weight: 290 lbs (130 kg)

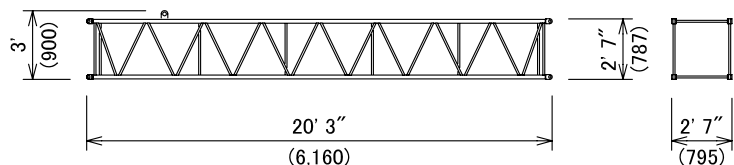
Includes cable roller and guy line.



### 20 ft (6.1 m) Insert Jib

Weight: 490 lbs (220 kg)

Includes cable roller and guy line.



# STERLING CRANE

## Transportation Plan

### Shipping plan for 200 ft Boom and 60 ft Jib

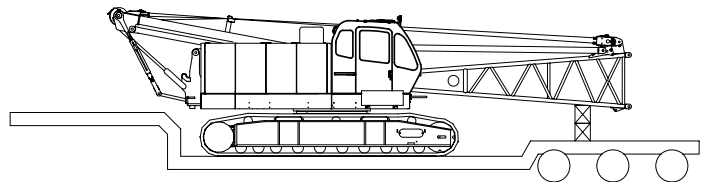
Description of Item	Weight		Trailer Loads			
	lbs	(kg)	#1	#2	#3	#4
Base Machine with Boom Base and Crawlers*	99,970	(45,350)	1			
Counterweight (A)	26,630	(12,070)		1		
Counterweight (B)	16,250	(7,370)			1	
Counterweight (C)	20,610	(9,350)			1	
Carbody Weight	8,050	(3,650)		1		1
10 ft Insert Boom and Guy Line	830	(380)		1	1	
20 ft Inset Boom and Guy Line	1,350	(610)				1
40 ft Insert Boom and Guy Line	2,410	(1,090)		1	1	
40 ft Insert Boom (w/ Lug) and Guy Line	2,440	(1,110)				1
Boom Tip and Guy Line	2,730	(1,240)				1
Jib Base and Guy Line	1,310	(590)			1	
10 ft Inset Jib and Guy Line	290	(130)			1	
20 ft Inset Jib and Guy Line	490	(220)			1	
Jib Tip	620	(280)			1	
Approx. Total Shipping Weight		lbs (kg)	99,970 (45,350)	37,920 (17,190)	42,810 (19,410)	14,570 (6,610)

\* Third drum is not included.

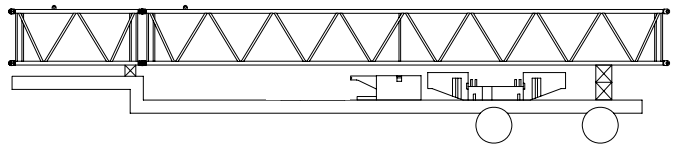
Loads for transportation were targeted at 45,000 lbs, 8' 6" wide, 48' long and 13' 6" high from ground.

This may vary depending on truck/trailer weight, style of trailer and state low.

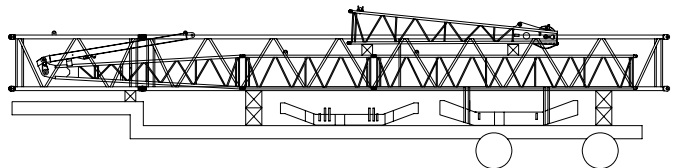
Trailer #1



Trailer #2



Trailer #3



Trailer #4

