



TRANSPORTATION SPECS - Hydraulic Truck Cranes

GROVE MODEL TM9120 - 120 TON CAPACITY

COMPONENT WEIGHTS

	<u>LBS.</u>	<u>KGS.</u>
Complete w/o Counterweights	130,004	58 970
Crane c/w 12,000 lb. counterweight	142,004	64 413
Crane c/w 30,000 lb. counterweight	160,004	72 578
Main Unit (w/o counterweights, outrigger boxes & 30 ton hook block)	111,274	50 474
Main Unit (w/o counterweights, outriggers boxes, 130 ton hook block and 33' – 58' tele swingaway)	108,054	48 595
Counterweight Max.	30,000	13 612

ADDITIONAL INFORMATION

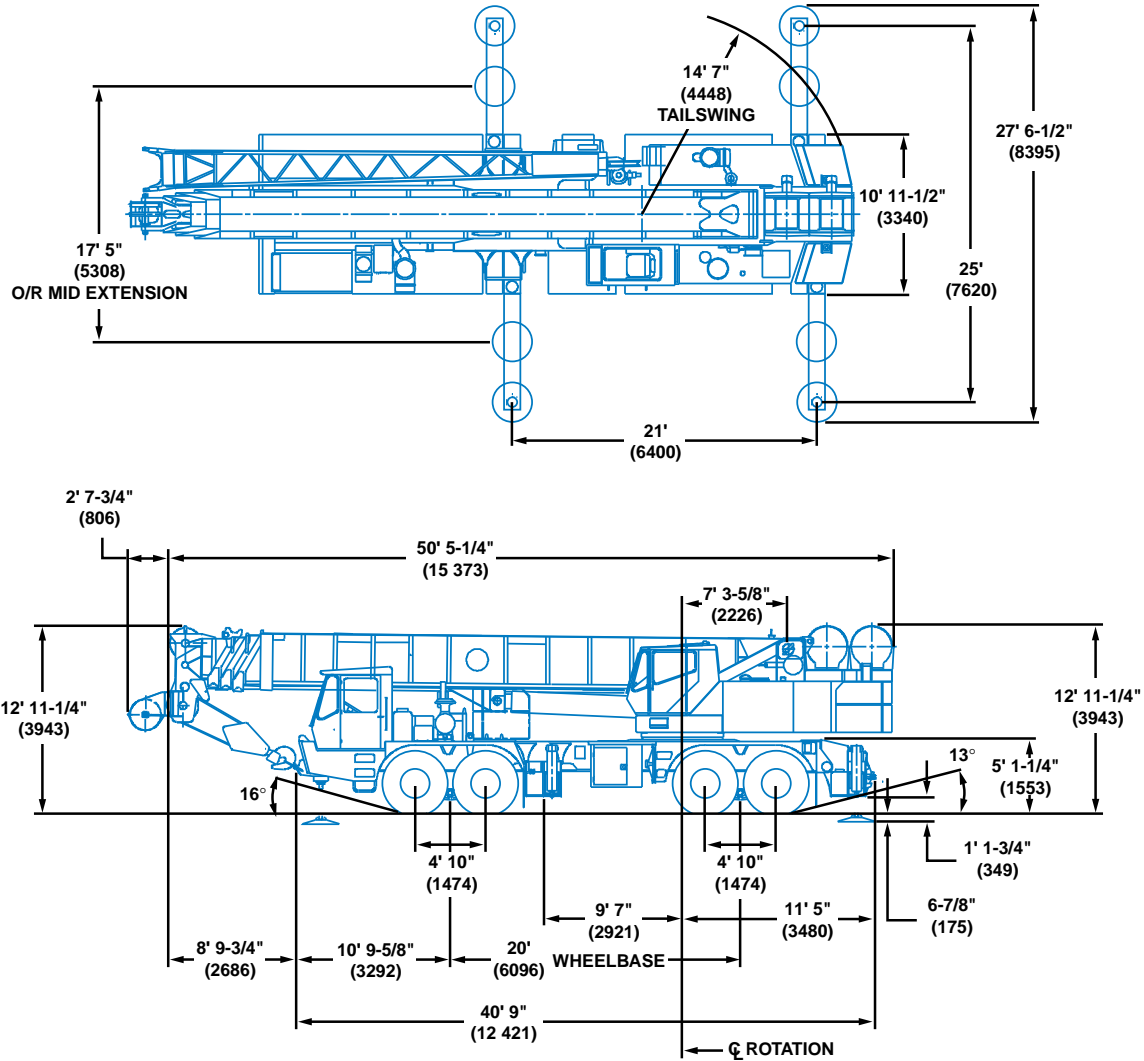
70 Ton Block (3 Sheave)		
130 Ton Block (6 Sheave)	3,427	1 554
30 Ton Block (Single Sheave)	1,022	464
15 Ton Ball	803	364
Tele Swingaway Jib (33' – 58')	3,220	1 461
Jib: 23' Base Section 30' Butt Section 14' Butt Section 30' Tapered Tip 14' Inserts (2) 38" □ 17' Mast		
Rooster Sheave	260	118
Counterweights: Plate #1	18,000	8 165
Plate #2	12,000	5 443
Outrigger Box & Jack: Front	7,365	3 341
Rear	7,938	3 601
Tire Size: Front: 445/80R25 Rear: 1400R24		
Main Load Line 1" x 800' (25.4mm x 244m)	1,480	671
Auxiliary Hoist Line 1" x 800' (25.4mm x 800m)	1,480	671

TRANSPORTATION

Maximum Speed:	60 km/hr 37.5 mph
----------------	----------------------

STERLING CRANE

Dimensions



Note: () Reference dimensions in mm

POUNDS (KILOGRAMS)	FRONT TANDEM	REAR TANDEM	TOTAL WEIGHT	MAX. SPEED
Equipped as above	58,183 lbs. (26 392 kg)	71,821 lbs. (32 578 kg)	130,004 lbs. (58 970 kg)	30 MPH (48.2 KPH)
12,000 lbs. portion cwt. on S/S	52,868 lbs. (23 891 kg)	89,136 lbs. (40 432 kg)	142,004 lbs. (64 413 kg)	30 MPH (48.2 KPH)
12,000 lbs. + 18,000 lbs. cwt. on S/S	44,895 lbs. (20 364 kg)	115,109 lbs. (52 213 kg)	160,004 lbs. (72 578 kg)	10 MPH (16 KPH)
Remove all cwt., O/R boxes & hookblock	50,328 lbs. (22 829 kg)	60,946 lbs. (27 645 kg)	111,274 lbs. (50 474 kg)	50 MPH (80.46 KPH)
Remove all cwt., O/R boxes, hookblock, teleswingaway	46,647 lbs. (21 159 kg)	60,485 lbs. (27 436 kg)	108,054 lbs. (48 595 kg)	50 MPH (80.46 KPH)
Components				
33 - 58' (10 - 17.7 m) teleswingaway	+3,681 lbs. (1670 kg)	-461 lbs. (-209 kg)	+3,220 lbs. (1461 kg)	
Front O/R box	+5,002 lbs. (2269 kg)	+2363 lbs. (1072 kg)	+7,365 lbs. (3341 kg)	
Rear O/R box w/floats	-2,944 lbs. (-1335 kg)	+10,882 lbs. (4936 kg)	+7,938 lbs. (3601 kg)	
Non-supply aux. hoist	+723 lbs. (327 kg)	-2,323 lbs. (-1053 kg)	-1,600 lbs. (-725 kg)	
130 ton hookblock	+5,797 lbs. (2629 kg)	-2,370 lbs. (-1075 kg)	+3,427 lbs. (1554 kg)	

Note: Weights may vary due to manufacturing tolerances and scale accuracy.