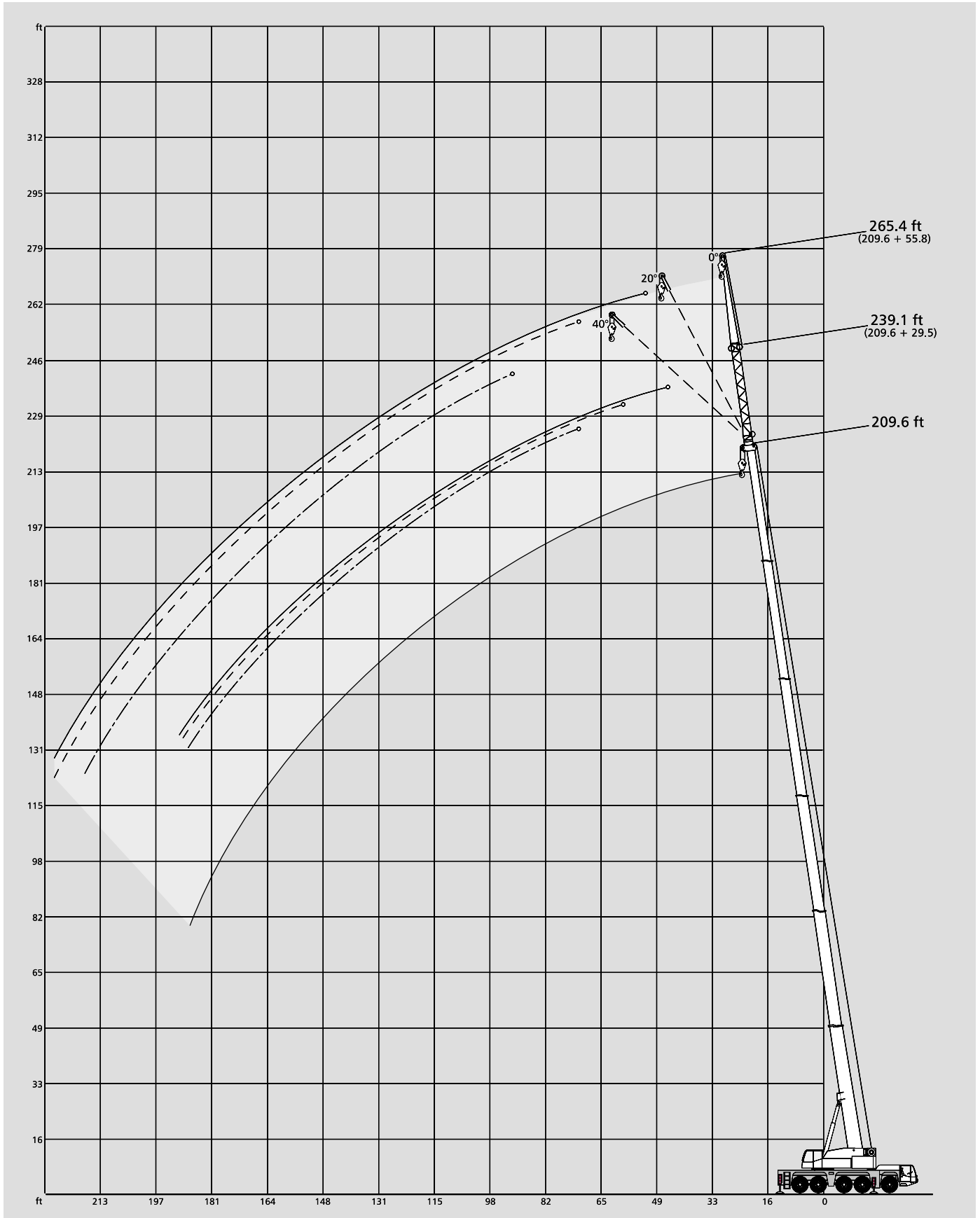




LIFTING CHARTS - All Terrain Cranes

DEMAG MODEL AC 160-1 - 200 TON CAPACITY

Working ranges main boom extension



Lifting capacities main boom extension

109,800 lb   360° 85%

58.1 ft Main boom		Extension					
Radius ft	29.5 ft			55.8 ft			
	0°	20°	40°	0°	20°	40°	
	1,000 lb						
10	39.7	-	-	-	-	-	
11	39.7	-	-	-	-	-	
13	39.7	-	-	29.5	-	-	
15	39.7	-	-	29.1	-	-	
16	39.7	-	-	28.9	-	-	
19	39.7	33.7	-	28.2	-	-	
23	39.7	31.7	-	27.3	-	-	
26	38.1	29.8	-	26.7	-	-	
29	35.9	28.2	21.8	25.6	-	-	
33	33.7	26.9	20.9	24.5	20.3	-	
39	29.5	24.5	19.8	22.5	18.7	-	
46	25.6	22.5	18.7	20.3	17.4	-	
52	23.1	20.7	18.1	18.3	15.9	14.3	
59	20.7	19.4	17.6	16.3	14.6	13.2	
65	19.0	17.9	17.4	15.0	13.4	12.3	
72	17.4	17.0	-	13.7	12.3	11.7	
79	-	-	-	12.6	11.7	11.0	
85	-	-	-	11.5	10.8	10.6	
92	-	-	-	10.8	10.1	10.1	
98	-	-	-	10.1	9.7	-	
105	-	-	-	-	-	-	

133.5 ft Main boom		Extension					
Radius ft	29.5 ft			55.8 ft			
	0°	20°	40°	0°	20°	40°	
	1,000 lb						
33	30.2	-	-	18.3	-	-	
39	26.7	23.8	-	18.1	-	-	
46	23.4	22.0	-	17.6	-	-	
52	21.2	20.3	18.7	17.2	-	-	
59	19.2	18.5	17.6	16.3	13.9	-	
65	17.0	17.0	16.5	15.0	13.0	-	
72	15.4	15.2	15.2	13.7	12.3	11.0	
79	14.3	13.9	13.9	12.6	11.7	10.6	
85	13.0	13.0	13.0	11.5	11.0	9.9	
92	11.9	11.9	11.9	10.8	10.4	9.7	
98	10.8	10.8	11.0	9.9	9.7	9.3	
105	10.1	9.9	9.9	9.0	9.0	8.8	
111	9.3	9.3	9.3	8.2	8.4	8.4	
118	8.6	8.6	8.6	7.5	7.7	7.7	
124	7.9	7.9	7.9	7.1	7.1	7.3	
131	7.3	7.3	-	6.6	6.6	6.6	
138	6.8	6.8	-	6.0	6.2	6.2	
144	6.4	6.4	-	5.5	5.7	5.7	
151	-	-	-	5.1	5.3	5.3	
157	-	-	-	4.9	4.9	-	
164	-	-	-	4.4	4.4	-	

193.9 ft Main boom		Extension					
Radius ft	29.5 ft			55.8 ft			
	0°	20°	40°	0°	20°	40°	
	1,000 lb						
46	17.4	-	-	-	-	-	
52	17.4	-	-	11.0	-	-	
59	17.2	17.4	-	11.0	-	-	
65	16.8	16.8	-	11.0	-	-	
72	16.3	16.1	15.7	11.0	-	-	
79	15.4	15.0	14.8	11.0	10.8	-	
85	14.6	14.1	13.9	11.0	10.8	-	
92	13.7	13.4	13.2	10.6	10.6	9.7	
98	12.8	12.6	12.6	10.1	10.1	9.5	
105	11.9	11.9	11.9	9.7	9.7	9.0	
111	11.2	11.0	11.2	9.3	9.3	8.8	
118	10.4	10.4	10.6	8.8	8.8	8.4	
124	9.7	9.9	9.9	8.4	8.4	8.2	
131	9.0	9.3	9.3	7.9	7.7	7.7	
138	8.4	8.6	8.6	7.5	7.3	7.5	
144	7.7	7.9	8.2	7.1	7.1	7.1	
151	7.3	7.5	7.5	6.4	6.6	6.6	
157	6.8	6.8	7.1	6.0	6.2	6.2	
164	6.2	6.4	6.4	5.5	5.7	6.0	
177	5.3	5.3	5.3	4.9	4.9	5.1	
190	4.0	4.2	-	4.0	4.2	4.4	
203	2.6	2.9	-	3.1	3.5	3.5	
216	-	-	-	-	2.4	-	

209.6 ft Main boom		Extension					
Radius ft	29.5 ft			55.8 ft			
	0°	20°	40°	0°	20°	40°	
	1,000 lb						
46	-	-	-	-	-	-	
52	13.0	-	-	-	-	-	
59	13.0	-	-	8.2	-	-	
65	13.0	13.0	-	8.2	-	-	
72	13.0	13.0	-	8.2	-	-	
79	12.8	12.8	13.0	8.2	8.2	-	
85	12.6	12.3	12.6	8.2	8.2	-	
92	11.9	11.9	11.9	8.2	8.2	-	
98	11.2	11.2	11.2	7.9	8.2	8.2	
105	10.6	10.6	10.6	7.7	8.2	8.2	
111	9.9	9.9	9.9	7.5	8.2	7.9	
118	9.3	9.3	9.5	7.3	7.7	7.7	
124	8.6	8.6	8.8	7.1	7.3	7.5	
131	8.2	8.2	8.2	6.8	7.1	7.1	
138	7.5	7.7	7.7	6.4	6.6	6.8	
144	6.8	7.1	7.3	6.0	6.2	6.4	
151	6.4	6.6	6.6	5.7	5.7	6.0	
157	5.7	6.0	6.2	5.3	5.5	5.7	
164	5.3	5.5	5.7	4.9	5.1	5.3	
177	4.4	4.6	4.6	4.0	4.4	4.4	
190	3.7	3.7	3.7	3.3	3.5	3.7	
203	2.4	2.6	-	2.6	2.9	3.1	
216	-	-	-	-	-	2.2	

Lifting capacities main boom extension

85,300 lb   360°  85%

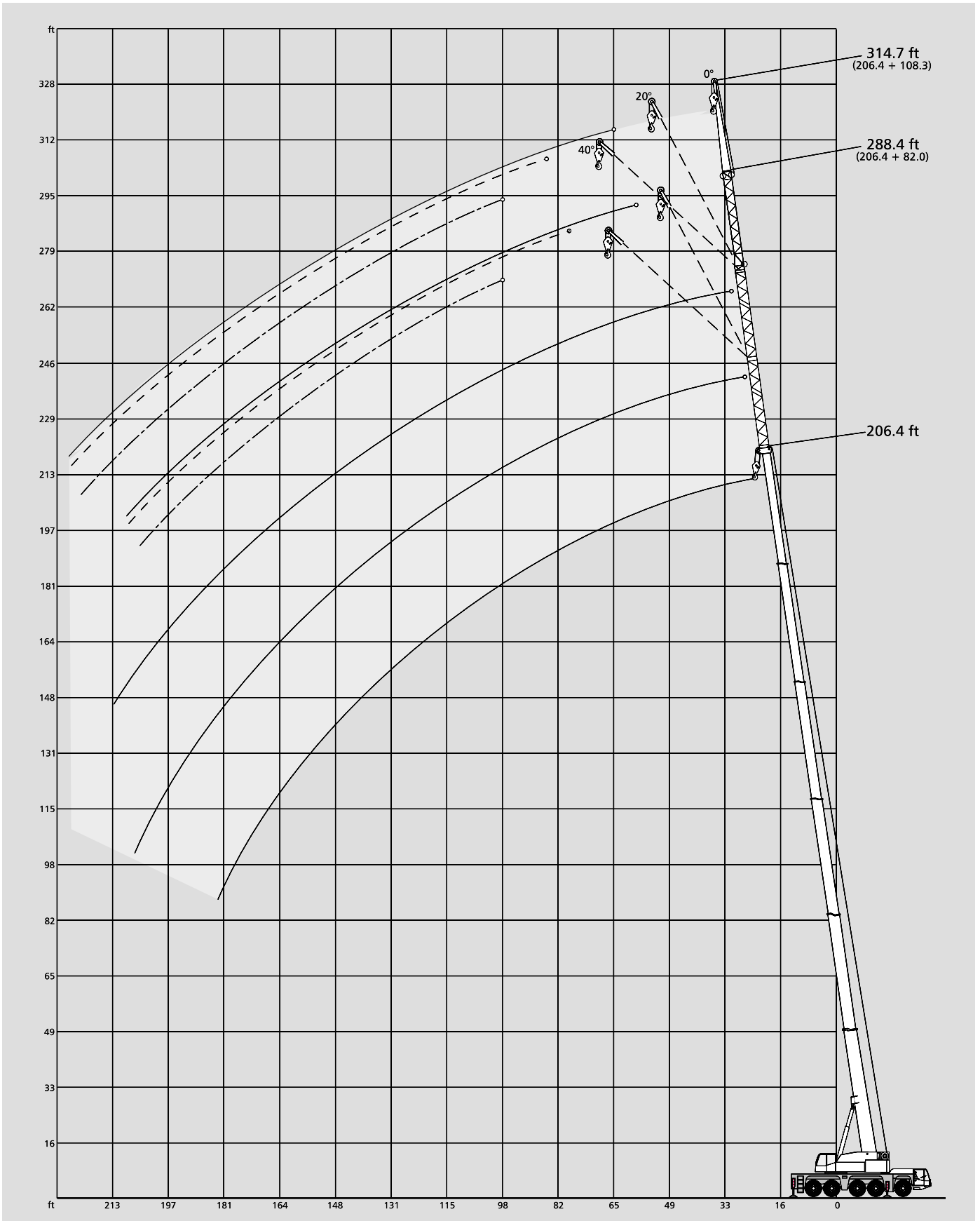
58.1 ft Main boom						
Radius ft	Extension					
	29.5 ft			55.8 ft		
	0°	20°	40°	0°	20°	40°
	1,000 lb					
10	39.7	-	-	-	-	-
11	39.7	-	-	-	-	-
13	39.7	-	-	29.5	-	-
15	39.7	-	-	29.1	-	-
16	39.7	-	-	28.9	-	-
19	39.7	33.7	-	28.2	-	-
23	39.7	31.7	-	27.3	-	-
26	38.1	29.8	-	26.7	-	-
29	35.9	28.2	21.8	25.6	-	-
33	33.7	26.9	20.9	24.5	20.3	-
39	29.5	24.5	19.8	22.5	18.7	-
46	25.6	22.5	18.7	20.3	17.4	-
52	23.1	20.7	18.1	18.3	15.9	14.3
59	20.7	19.4	17.6	16.3	14.6	13.2
65	19.0	17.9	17.4	15.0	13.4	12.3
72	17.4	17.0	-	13.7	12.3	11.7
79	-	-	-	12.6	11.7	11.0
85	-	-	-	11.5	10.8	10.6
92	-	-	-	10.8	10.1	10.1
98	-	-	-	10.1	9.7	-
105	-	-	-	-	-	-

133.5 ft Main boom						
Radius ft	Extension					
	29.5 ft			55.8 ft		
	0°	20°	40°	0°	20°	40°
	1,000 lb					
33	30.2	-	-	18.3	-	-
39	26.7	23.8	-	18.1	-	-
46	23.4	22.0	-	17.6	-	-
52	21.2	20.3	18.7	17.2	-	-
59	19.2	18.5	17.6	16.3	13.9	-
65	17.0	17.0	16.5	15.0	13.0	-
72	15.4	15.2	15.2	13.7	12.3	11.0
79	14.3	13.9	13.9	12.6	11.7	10.6
85	13.0	13.0	13.0	11.5	11.0	9.9
92	11.9	11.9	11.9	10.8	10.4	9.7
98	10.8	10.8	11.0	9.9	9.7	9.3
105	10.1	9.9	9.9	9.0	9.0	8.8
111	9.3	9.3	9.3	8.2	8.4	8.4
118	8.6	8.6	8.6	7.5	7.7	7.7
124	7.9	7.9	7.9	7.1	7.1	7.3
131	7.3	7.3	-	6.6	6.6	6.6
138	6.8	6.8	-	6.0	6.2	6.2
144	6.4	6.4	-	5.5	5.7	5.7
151	-	-	-	5.1	5.3	5.3
157	-	-	-	4.9	4.9	-
164	-	-	-	4.4	4.4	-

193.9 ft Main boom						
Radius ft	Extension					
	29.5 ft			55.8 ft		
	0°	20°	40°	0°	20°	40°
	1,000 lb					
46	17.4	-	-	-	-	-
52	17.4	-	-	11.0	-	-
59	17.2	17.4	-	11.0	-	-
65	16.8	16.8	-	11.0	-	-
72	16.3	16.1	15.7	11.0	-	-
79	15.4	15.0	14.8	11.0	10.8	-
85	14.6	14.1	13.9	11.0	10.8	-
92	13.7	13.4	13.2	10.6	10.6	9.7
98	12.8	12.6	12.6	10.1	10.1	9.5
105	11.9	11.9	11.9	9.7	9.7	9.0
111	11.2	11.0	11.2	9.3	9.3	8.8
118	10.4	10.4	10.6	8.8	8.8	8.4
124	9.7	9.9	9.9	8.4	8.4	8.2
131	9.0	9.3	9.3	7.9	7.7	7.7
138	8.2	8.6	8.6	7.5	7.3	7.5
144	6.8	7.7	8.2	7.1	7.1	7.1
151	5.7	6.4	6.8	6.2	6.6	6.6
157	4.9	5.5	5.7	5.3	6.2	6.2
164	4.0	4.4	4.6	4.4	5.5	6.0
177	2.4	2.9	2.9	2.6	3.7	4.4
190	-	-	-	-	2.2	2.6

209.6 ft Main boom						
Radius ft	Extension					
	29.5 ft			55.8 ft		
	0°	20°	40°	0°	20°	40°
	1,000 lb					
46	-	-	-	-	-	-
52	13.0	-	-	-	-	-
59	13.0	-	-	8.2	-	-
65	13.0	13.0	-	8.2	-	-
72	13.0	13.0	-	8.2	-	-
79	12.8	12.8	13.0	8.2	8.2	-
85	12.6	12.3	12.6	8.2	8.2	-
92	11.9	11.9	11.9	8.2	8.2	-
98	11.2	11.2	11.2	7.9	8.2	8.2
105	10.6	10.6	10.6	7.7	8.2	8.2
111	9.9	9.9	9.9	7.5	8.2	7.9
118	9.3	9.3	9.5	7.3	7.7	7.7
124	8.6	8.6	8.8	7.1	7.3	7.5
131	8.2	8.2	8.2	6.8	7.1	7.1
138	7.5	7.7	7.7	6.4	6.6	6.8
144	6.6	7.1	7.3	6.0	6.2	6.4
151	5.7	6.4	6.6	5.7	5.7	6.0
157	4.6	5.3	5.7	4.9	5.5	5.7
164	3.7	4.4	4.6	4.0	5.1	5.3
177	-	2.6	2.9	2.4	3.5	4.2
190	-	-	-	-	-	2.6

Working ranges main boom extension



Lifting capacities main boom extension

109,800 lb



360°

85 %

58.1 ft Main boom						
Radius ft	Extension					
	82.0 ft			108.3 ft		
	0°	20°	40°	0°	20°	40°
	1,000 lb					
19	23.8	-	-	-	-	-
23	23.4	-	-	-	-	-
26	22.7	-	-	17.4	-	-
29	22.0	-	-	17.2	-	-
33	21.2	-	-	16.5	-	-
39	19.2	17.0	-	15.2	-	-
46	17.2	15.2	-	13.9	13.0	-
52	15.0	13.7	-	12.6	11.9	-
59	13.7	12.3	11.7	11.2	10.6	-
65	12.3	11.2	10.6	9.9	9.7	9.5
72	11.0	10.4	9.9	9.0	8.8	8.6
79	9.9	9.5	9.0	8.4	7.9	7.9
85	9.3	8.8	8.4	7.5	7.3	7.3
92	8.4	7.9	7.9	6.6	6.6	6.6
98	7.7	7.5	7.3	6.2	6.2	6.2
105	7.1	7.1	7.1	5.7	5.5	5.5
111	6.6	6.6	6.6	5.3	5.1	5.1
118	6.2	6.2	-	4.9	4.6	4.9
124	6.0	6.0	-	4.2	4.4	4.4
131	-	-	-	4.0	4.0	4.2
138	-	-	-	3.7	3.7	-
144	-	-	-	3.5	3.5	-
151	-	-	-	3.3	3.3	-

133.5 ft Main boom						
Radius ft	Extension					
	82.0 ft			108.3 ft		
	0°	20°	40°	0°	20°	40°
	1,000 lb					
46	13.4	-	-	-	-	-
52	13.2	-	-	9.0	-	-
59	12.6	-	-	9.0	-	-
65	11.9	10.6	-	8.6	-	-
72	11.2	9.9	-	8.4	7.9	-
79	10.4	9.3	8.6	7.9	7.5	-
85	9.7	8.6	8.2	7.5	6.8	6.6
92	8.8	8.2	7.7	6.8	6.4	6.2
98	8.2	7.7	7.3	6.4	6.0	5.7
105	7.5	7.3	6.8	5.7	5.5	5.3
111	7.1	6.6	6.6	5.3	5.3	5.1
118	6.4	6.4	6.2	4.9	4.9	4.9
124	5.7	6.0	5.7	4.6	4.4	4.4
131	5.1	5.5	5.5	4.2	4.2	4.2
138	4.9	5.1	5.1	3.7	3.7	4.0
144	4.4	4.6	4.6	3.3	3.5	3.5
151	4.0	4.2	4.4	3.1	3.3	3.3
157	3.7	4.0	4.0	2.6	2.9	3.1
164	3.3	3.5	3.5	2.4	2.6	2.9
177	2.6	2.9	-	-	-	2.2
190	2.2	2.4	-	-	-	-
203	-	-	-	-	-	-
216	-	-	-	-	-	-

193.9 ft Main boom						
Radius ft	Extension					
	82.0 ft			108.3 ft		
	0°	20°	40°	0°	20°	40°
	1,000 lb					
59	7.3	-	-	-	-	-
65	7.3	-	-	4.2	-	-
72	7.3	-	-	4.2	-	-
79	7.3	-	-	4.2	-	-
85	7.3	6.8	-	4.2	-	-
92	7.3	6.8	-	4.2	4.0	-
98	7.3	6.8	6.8	4.2	4.0	-
105	7.1	6.8	6.8	4.2	4.0	4.0
111	6.8	6.8	6.6	4.2	4.0	4.0
118	6.6	6.6	6.4	4.2	4.0	4.0
124	6.4	6.4	6.2	4.0	4.0	4.0
131	6.0	6.2	6.0	4.0	4.0	4.0
138	5.7	5.7	5.7	4.0	3.7	4.0
144	5.5	5.5	5.5	3.7	3.5	3.7
151	5.1	5.1	5.1	3.7	3.5	3.5
157	4.6	4.9	4.9	3.5	3.3	3.5
164	4.4	4.4	4.6	3.3	3.3	3.3
177	3.7	4.0	4.0	2.6	2.9	2.9
190	3.1	3.3	3.3	-	2.4	2.4
203	2.4	2.6	2.9	-	-	-
216	-	-	-	-	-	-

206.4 ft Main boom						
Radius ft	Extension					
	82.0 ft			108.3 ft		
	0°	20°	40°	0°	20°	40°
	1,000 lb					
65	5.3	-	-	-	-	-
72	5.3	-	-	2.6	-	-
79	5.3	-	-	2.6	-	-
85	5.3	5.1	-	2.6	-	-
92	5.3	5.1	-	2.6	-	-
98	5.3	5.1	-	2.6	-	-
105	5.3	5.1	5.1	2.6	-	-
111	5.3	5.1	5.1	2.6	-	-
118	5.1	5.1	5.1	2.6	-	-
124	5.1	5.1	5.1	2.6	-	-
131	4.9	4.9	5.1	2.6	-	-
138	4.9	4.6	4.9	2.6	-	-
144	4.6	4.4	4.6	2.6	-	-
151	4.4	4.4	4.4	2.6	-	-
157	4.0	4.2	4.2	2.6	-	-
164	3.7	4.0	4.0	2.6	-	-
177	3.1	3.3	3.3	-	-	-
190	2.4	2.6	2.9	-	-	-
203	-	-	2.2	-	-	-
216	-	-	-	-	-	-
229	-	-	-	-	-	-

Lifting capacities main boom extension

85,300 lb 

 360°

85 %

58.1 ft Main boom						
Radius ft	Extension					
	82.0 ft			108.3 ft		
	0°	20°	40°	0°	20°	40°
	1,000 lb					
19	23.8	-	-	-	-	-
23	23.4	-	-	-	-	-
26	22.7	-	-	17.4	-	-
29	22.0	-	-	17.2	-	-
33	21.2	-	-	16.5	-	-
39	19.2	17.0	-	15.2	-	-
46	17.2	15.2	-	13.9	13.0	-
52	15.0	13.7	-	12.6	11.9	-
59	13.7	12.3	11.7	11.2	10.6	-
65	12.3	11.2	10.6	9.9	9.7	9.5
72	11.0	10.4	9.9	9.0	8.8	8.6
79	9.9	9.5	9.0	8.4	7.9	7.9
85	9.3	8.8	8.4	7.5	7.3	7.3
92	8.4	7.9	7.9	6.6	6.6	6.6
98	7.7	7.5	7.3	6.2	6.2	6.2
105	7.1	7.1	7.1	5.7	5.5	5.5
111	6.6	6.6	6.6	5.3	5.1	5.1
118	6.2	6.2	-	4.9	4.6	4.9
124	6.0	6.0	-	4.2	4.4	4.4
131	-	-	-	4.0	4.0	4.2
138	-	-	-	3.7	3.7	-
144	-	-	-	3.5	3.5	-
151	-	-	-	3.3	3.3	-

133.5 ft Main boom						
Radius ft	Extension					
	82.0 ft			108.3 ft		
	0°	20°	40°	0°	20°	40°
	1,000 lb					
39	-	-	-	-	-	-
46	13.4	-	-	-	-	-
52	13.2	-	-	9.0	-	-
59	12.6	-	-	9.0	-	-
65	11.9	10.6	-	8.6	-	-
72	11.2	9.9	-	8.4	7.9	-
79	10.4	9.3	8.6	7.9	7.5	-
85	9.7	8.6	8.2	7.5	6.8	6.6
92	8.8	8.2	7.7	6.8	6.4	6.2
98	8.2	7.7	7.3	6.4	6.0	5.7
105	7.5	7.3	6.8	5.7	5.5	5.3
111	7.1	6.6	6.6	5.3	5.3	5.1
118	6.4	6.4	6.2	4.9	4.9	4.9
124	5.7	6.0	5.7	4.6	4.4	4.4
131	5.1	5.5	5.5	4.2	4.2	4.2
138	4.9	5.1	5.1	3.7	3.7	4.0
144	4.4	4.6	4.6	3.3	3.5	3.5
151	4.0	4.2	4.4	3.1	3.3	3.3
157	3.7	4.0	4.0	2.6	2.9	3.1
164	3.3	3.5	3.5	2.4	2.6	2.9
177	2.6	2.9	-	-	-	2.2
190	2.2	2.4	-	-	-	-
203	-	-	-	-	-	-

193.9 ft Main boom						
Radius ft	Extension					
	82.0 ft			108.3 ft		
	0°	20°	40°	0°	20°	40°
	1,000 lb					
59	7.3	-	-	-	-	-
65	7.3	-	-	4.2	-	-
72	7.3	-	-	4.2	-	-
79	7.3	-	-	4.2	-	-
85	7.3	6.8	-	4.2	-	-
92	7.3	6.8	-	4.2	4.0	-
98	7.3	6.8	6.8	4.2	4.0	-
105	7.1	6.8	6.8	4.2	4.0	4.0
111	6.8	6.8	6.6	4.2	4.0	4.0
118	6.6	6.6	6.4	4.2	4.0	4.0
124	6.4	6.4	6.2	4.0	4.0	4.0
131	6.0	6.2	6.0	4.0	4.0	4.0
138	5.7	5.7	5.7	4.0	3.7	4.0
144	5.5	5.5	5.5	3.7	3.5	3.7
151	5.1	5.1	5.1	3.7	3.5	3.5
157	4.6	4.9	4.9	3.5	3.3	3.5
164	4.2	4.4	4.6	3.3	3.3	3.3
177	2.4	3.5	4.0	-	2.9	2.9
190	-	-	2.6	-	-	2.4

206.4 ft Main boom						
Radius ft	Extension					
	82.0 ft			108.3 ft		
	0°	20°	40°	0°	20°	40°
	1,000 lb					
65	5.3	-	-	-	-	-
72	5.3	-	-	2.6	-	-
79	5.3	-	-	2.6	-	-
85	5.3	5.1	-	2.6	-	-
92	5.3	5.1	-	2.6	-	-
98	5.3	5.1	-	2.6	-	-
105	5.3	5.1	5.1	2.6	-	-
111	5.3	5.1	5.1	2.6	-	-
118	5.1	5.1	5.1	2.6	-	-
124	5.1	5.1	5.1	2.6	-	-
131	4.9	4.9	5.1	2.6	-	-
138	4.9	4.6	4.9	2.6	-	-
144	4.6	4.4	4.6	2.6	-	-
151	4.4	4.4	4.4	2.6	-	-
157	4.0	4.2	4.2	2.6	-	-
164	3.7	4.0	4.0	2.6	-	-
177	2.4	3.3	3.3	-	-	-
190	-	-	2.6	-	-	-
203	-	-	-	-	-	-