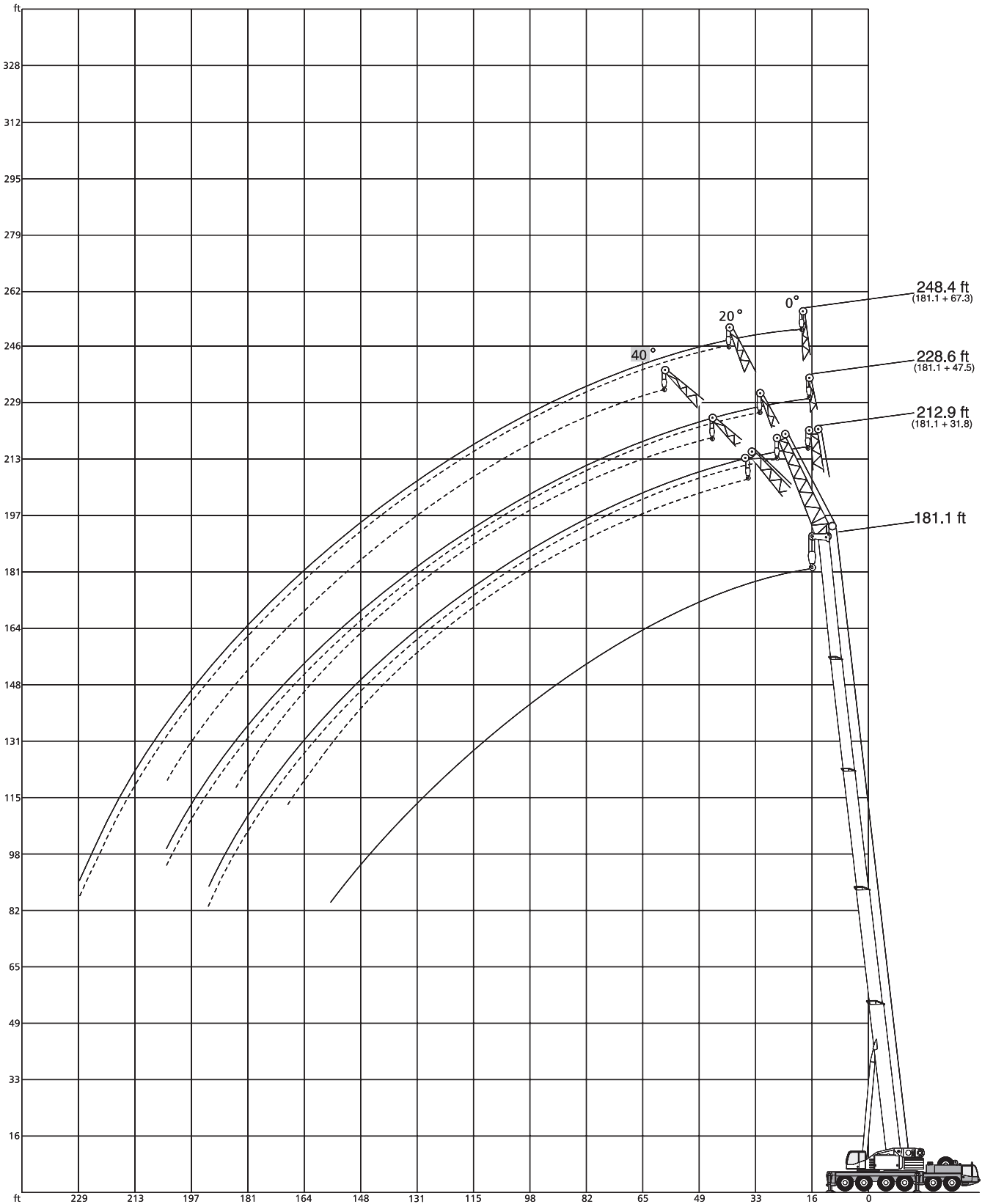




LIFTING CHARTS - All Terrain Cranes

DEMAG MODEL AC 200 - 220 TON CAPACITY

Working ranges main boom extension, main boom 181.1 ft



STERLING CRANE

Lifting capacities main boom extension

141,000 lb  360° 85%

181.1 ft Main boom

Radius ft	31.8 ft			Extension 47.5 ft			67.3 ft			Radius ft
	0°	20°	40°	0°	20°	40°	0°	20°	40°	
36	34.8	-	-	-	-	-	-	-	-	36
39	34.0	-	-	-	-	-	18.5	-	-	39
46	31.9	30.4	-	-	-	-	18.0	-	-	46
52	30.5	28.9	26.3	-	23.8	-	17.4	-	-	52
59	28.6	27.3	24.9	-	23.1	-	16.9	-	-	59
65	27.4	26.1	23.9	-	22.1	19.9	16.5	15.4	-	65
69	26.4	25.3	23.1	23.5	21.3	19.3	16.3	15.2	-	69
72	25.8	24.9	22.7	23.1	20.9	19.1	15.8	15.0	-	72
79	24.4	23.5	21.7	22.2	20.0	18.2	15.4	14.5	12.5	79
85	23.4	22.7	21.1	21.4	19.0	17.6	15.0	14.1	12.5	85
92	22.2	21.5	20.4	20.4	18.2	16.9	14.7	13.6	12.3	92
98	21.2	20.7	19.8	19.6	17.4	16.3	14.3	13.2	12.3	98
111	19.2	19.0	18.5	17.9	16.1	15.2	13.4	12.5	11.9	111
124	17.5	17.2	17.2	16.1	15.0	14.3	12.8	11.7	11.2	124
138	15.8	15.4	15.4	14.5	13.8	13.6	12.1	11.0	10.5	138
151	12.7	13.6	13.8	13.4	12.9	12.7	11.4	10.3	9.9	151
164	10.1	10.5	11.0	10.5	11.6	12.1	10.5	9.7	9.4	164
167	9.5	10.1	10.4	9.9	11.0	11.5	10.3	9.7	9.4	167
177	7.7	8.1	-	8.4	9.2	9.7	9.0	9.2	9.2	177
184	6.7	7.2	-	7.2	8.1	8.5	7.9	8.7	9.0	184
190	5.9	6.2	-	6.4	7.1	-	7.0	8.1	8.8	190
203	-	-	-	4.8	5.3	-	5.3	6.2	6.8	203
216	-	-	-	-	-	-	4.0	4.6	-	216
229	-	-	-	-	-	-	2.9	3.1	-	229
233	-	-	-	-	-	-	-	-	-	233