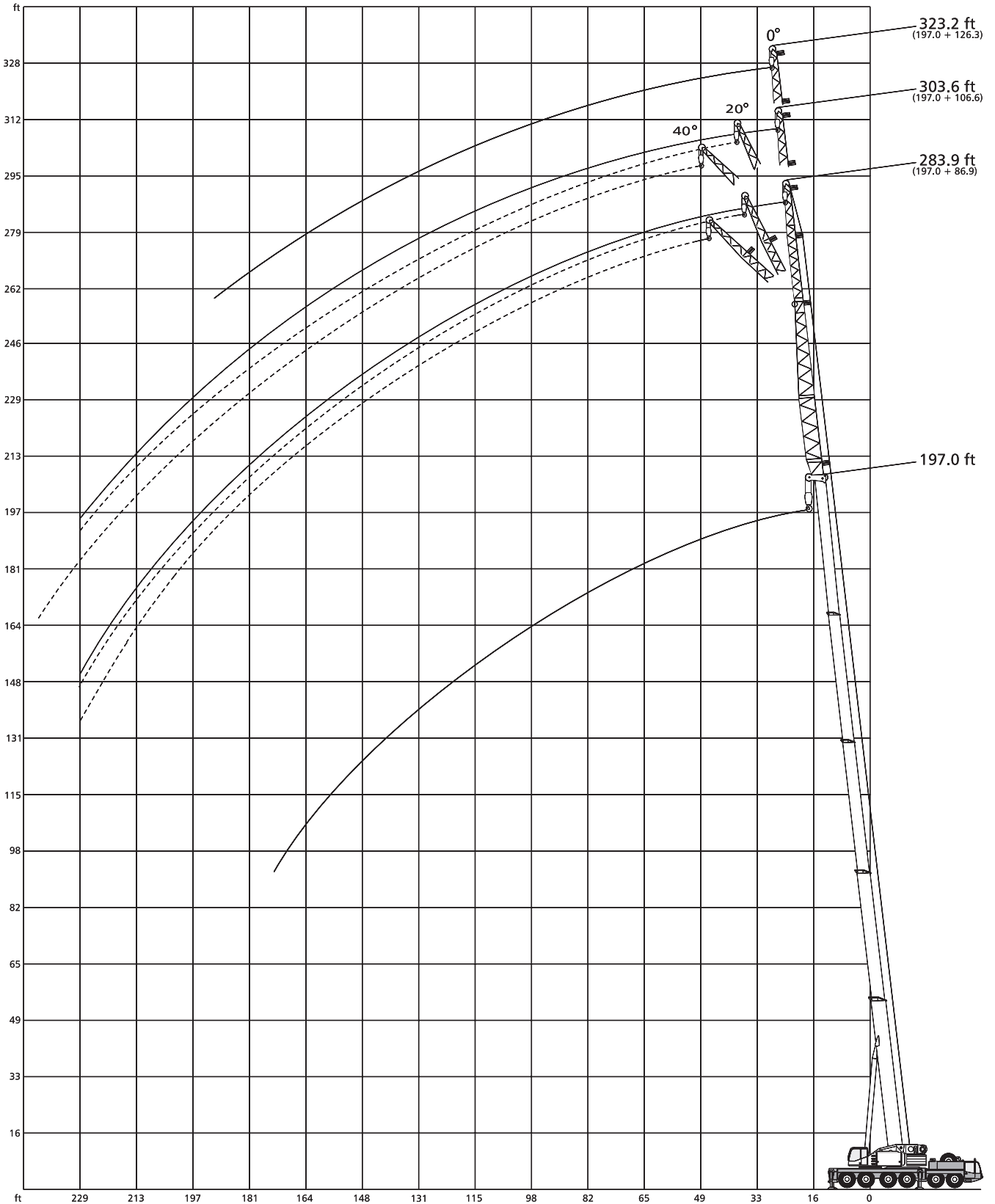




LIFTING CHARTS - All Terrain Cranes

DEMAG MODEL AC 200 - 220 TON CAPACITY

Working ranges main boom extension, main boom 197.0 ft



STERLING CRANE

Lifting capacities main boom extension

141,000 lb  360° 85%

197.0 ft Main boom

Radius ft	86.9 ft			Extension 106.6 ft			126.3 ft			Radius ft
	0°	20°	40°	0°	20°	40°	0°	20°	40°	
39	9.9	-	-	-	-	-	-	-	-	39
46	9.9	-	-	7.7	-	-	-	-	-	46
52	9.9	-	-	7.7	-	-	5.0	-	-	52
59	9.9	9.7	-	7.4	-	-	4.8	-	-	59
65	9.9	9.3	8.1	7.2	7.9	-	4.6	-	-	65
72	9.9	9.0	7.9	7.2	7.5	6.8	4.4	-	-	72
75	9.9	8.8	7.9	7.0	7.4	6.6	4.2	-	-	75
79	9.9	8.5	7.7	7.0	7.2	6.5	4.1	-	-	79
85	9.7	8.3	7.7	6.8	7.0	6.1	3.9	-	-	85
92	9.4	8.1	7.4	6.6	6.8	5.9	3.7	-	-	92
98	9.4	7.9	7.4	6.4	6.6	5.7	3.5	-	-	98
111	9.0	7.7	7.2	6.1	6.1	5.5	3.3	-	-	111
124	8.4	7.5	7.2	5.7	5.7	5.0	3.0	-	-	124
138	7.9	7.2	7.0	5.2	5.5	4.8	2.8	-	-	138
151	7.4	6.8	7.0	5.0	5.0	4.6	2.8	-	-	151
164	6.8	6.3	6.8	4.6	4.6	4.1	2.6	-	-	164
177	6.1	5.9	6.3	4.4	4.4	3.9	2.4	-	-	177
190	5.7	5.3	5.9	4.4	4.1	3.7	2.2	-	-	190
203	5.0	4.6	5.3	4.1	3.7	3.5	-	-	-	203
216	4.2	3.9	4.4	3.9	3.5	3.3	-	-	-	216
229	2.9	3.3	3.3	2.9	3.1	2.8	-	-	-	229
243	-	-	-	-	-	2.1	-	-	-	243
256	-	-	-	-	-	-	-	-	-	256

Notes to lifting capacity

Lifting capacities do not exceed 85% of tipping load.
Weight of hook blocks and slings are part of the load, and is to be deducted from the capacity ratings.

Crane operation is permissible up to a
wind pressure of 1.25 lb/ft²
wind speed of 32 ft/s

Consult operation manual for further details.

Note: Data published herein is intended as a guide only and shall not be construed to warrant applicability for lifting purposes.
Crane operation is subject to the computer charts and operation manual both supplied with the crane.