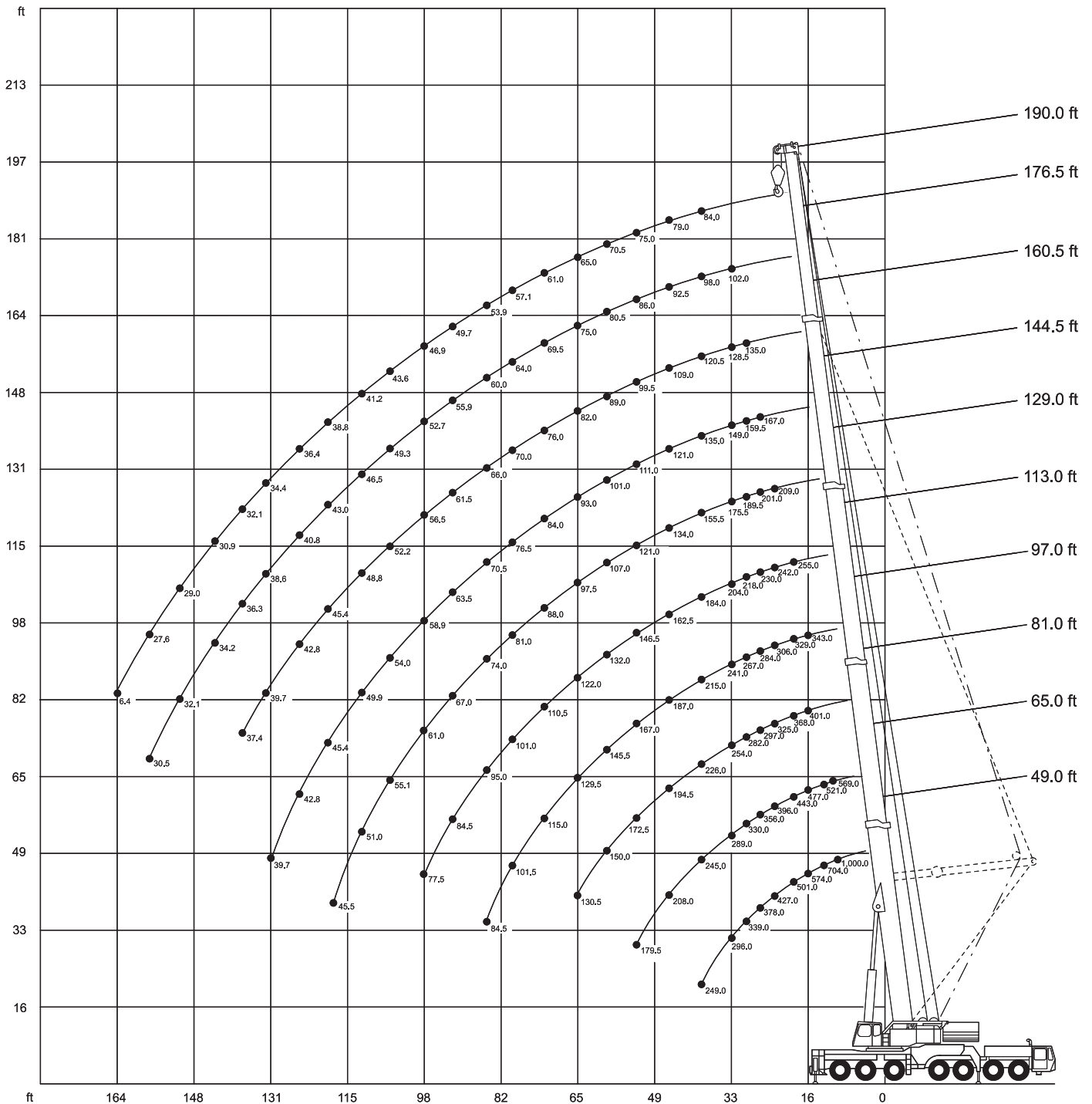




## LIFTING CHARTS - All Terrain Cranes

### DEMAG MODEL AC 400 - 500 TON CAPACITY

#### Working ranges main boom



## Lifting capacities main boom in 1,000 lb

**269,000 lb**  **360°** **85%**

Radius ft	Main boom													
	49.0 ft <sup>1)</sup>	49.0 ft	65.0 ft	65.0 ft	81.0 ft	97.0 ft	97.0 ft	113.0 ft	113.0 ft	129.0 ft	144.5 ft	160.5 ft	176.5 ft	190.0 ft
	1,000 lb													
10	1,000.0 <sup>2)</sup>	-	-	-	-	-	-	-	-	-	-	-	-	-
10	869.0	600.0	-	-	-	-	-	-	-	-	-	-	-	-
11	788.0	574.0	569.0	569.0	-	-	-	-	-	-	-	-	-	-
13	704.0	523.0	521.0	521.0	-	-	-	-	-	-	-	-	-	-
15	600.0	484.0	490.0	480.0	-	-	-	-	-	-	-	-	-	-
16	574.0	466.0	477.0	463.0	401.0	300.0	343.0	-	-	-	-	-	-	-
19	501.0	418.0	443.0	416.0	368.0	276.0	329.0	253.0	255.0	-	-	-	-	-
23	427.0	365.0	396.0	363.0	325.0	248.0	306.0	229.0	242.0	209.0	-	-	-	-
26	378.0	335.0	356.0	333.0	297.0	232.0	284.0	212.0	230.0	201.0	167.0	-	-	-
29	339.0	308.0	330.0	306.0	282.0	216.0	267.0	200.0	218.0	189.5	159.5	135.0	-	-
33	296.0	276.0	289.0	274.0	254.0	195.0	241.0	181.0	204.0	175.5	149.0	128.5	102.0	-
39	249.0	240.0	245.0	240.0	226.0	170.0	215.0	155.5	184.0	155.5	135.0	120.5	98.0	84.0
46	-	-	208.0	208.0	194.5	145.0	187.0	133.0	162.5	134.0	121.0	109.0	92.5	79.0
52	-	-	179.5	179.5	172.5	129.0	167.0	118.0	146.5	121.0	111.0	99.5	86.0	75.0
59	-	-	-	-	150.0	110.0	145.5	105.5	132.0	107.0	101.0	89.0	80.5	70.5
65	-	-	-	-	130.5	98.0	129.5	95.5	122.0	97.5	93.0	82.0	75.0	65.0
72	-	-	-	-	-	84.0	115.0	85.0	110.5	88.0	84.0	76.0	69.5	61.0
79	-	-	-	-	-	72.0	101.5	76.5	101.0	81.0	76.5	70.0	64.0	57.1
85	-	-	-	-	-	63.5	84.5	69.5	95.0	74.0	70.5	66.0	60.0	53.9
92	-	-	-	-	-	-	-	64.5	84.5	67.0	63.5	61.5	55.9	49.7
98	-	-	-	-	-	-	-	57.8	77.5	61.0	58.9	56.5	52.7	46.9
105	-	-	-	-	-	-	-	-	-	55.1	54.0	52.2	49.3	43.6
111	-	-	-	-	-	-	-	-	-	51.0	49.9	48.8	46.5	41.2
118	-	-	-	-	-	-	-	-	-	45.5	45.4	45.4	43.0	38.8
124	-	-	-	-	-	-	-	-	-	-	42.8	42.8	40.8	36.4
131	-	-	-	-	-	-	-	-	-	-	39.7	39.7	38.6	34.4
138	-	-	-	-	-	-	-	-	-	-	-	37.4	36.3	32.1
144	-	-	-	-	-	-	-	-	-	-	-	-	34.2	30.9
151	-	-	-	-	-	-	-	-	-	-	-	-	32.1	29.0
157	-	-	-	-	-	-	-	-	-	-	-	-	30.5	27.6
164	-	-	-	-	-	-	-	-	-	-	-	-	-	6.4

Boom extension sequence															%
Tele 1	0	0	45	45	45	90	45	90	45	90	90	90	90	90	100
Tele 2	0	0	0	0	45	45	45	90	45	45	90	90	90	90	100
Tele 3	0	0	0	0	0	0	45	0	45	45	45	90	90	100	
Tele 4	0	0	0	0	0	0	0	0	45	45	45	45	90	100	

1) with add. jack leg  
2) static test load only

# STERLING CRANE

## Lifting capacities main boom in 1,000 lb

**211,500 lb**   **360°** **85%**

Radius ft	Main boom											
	49.0 ft	65.0 ft	81.0 ft	97.0 ft	97.0 ft	113.0 ft	113.0 ft	129.0 ft	144.5 ft	160.5 ft	176.5 ft	190.0 ft
	1,000 lb											
10	589.0	-	-	-	-	-	-	-	-	-	-	-
11	563.0	559.0	-	-	-	-	-	-	-	-	-	-
13	516.0	514.0	-	-	-	-	-	-	-	-	-	-
15	474.0	472.0	-	-	-	-	-	-	-	-	-	-
16	458.0	456.0	401.0	300.0	343.0	-	-	-	-	-	-	-
19	411.0	409.0	368.0	276.0	329.0	253.0	255.0	-	-	-	-	-
23	361.0	358.0	325.0	248.0	306.0	229.0	242.0	209.0	-	-	-	-
26	328.0	326.0	297.0	232.0	284.0	212.0	230.0	201.0	167.0	-	-	-
29	304.0	300.0	282.0	216.0	267.0	200.0	218.0	189.5	159.5	135.0	-	-
33	272.0	270.0	254.0	195.0	241.0	181.0	204.0	175.5	149.0	128.5	102.0	-
39	238.0	233.0	226.0	170.0	215.0	155.5	184.0	155.5	135.0	120.5	98.0	84.0
46	-	198.0	194.5	145.0	187.0	133.0	162.5	134.0	121.0	109.0	92.5	79.0
52	-	172.5	172.5	129.0	167.0	118.0	146.5	121.0	111.0	99.5	86.0	75.0
59	-	-	144.5	110.0	145.5	105.5	132.0	107.0	101.0	89.0	80.5	70.5
65	-	-	124.0	98.0	126.5	95.5	122.0	97.5	93.0	82.0	75.0	65.0
72	-	-	-	84.0	107.0	85.0	110.5	88.0	84.0	76.0	69.5	61.0
79	-	-	-	72.0	93.0	76.5	96.5	81.0	76.5	70.0	64.0	57.1
85	-	-	-	63.5	82.0	69.5	86.0	74.0	70.5	66.0	60.0	53.9
92	-	-	-	-	-	64.5	75.5	67.0	63.5	61.5	55.9	49.7
98	-	-	-	-	-	57.8	68.5	61.0	58.9	56.5	52.7	46.9
105	-	-	-	-	-	-	-	55.1	54.0	52.2	49.3	43.6
111	-	-	-	-	-	-	-	51.0	49.9	48.8	46.5	41.2
118	-	-	-	-	-	-	-	45.5	45.4	45.4	43.0	38.8
124	-	-	-	-	-	-	-	-	42.8	42.8	40.8	36.4
131	-	-	-	-	-	-	-	-	39.7	39.7	38.6	34.4
138	-	-	-	-	-	-	-	-	-	37.4	36.3	32.1
144	-	-	-	-	-	-	-	-	-	-	34.2	30.9
151	-	-	-	-	-	-	-	-	-	-	32.1	29.0
157	-	-	-	-	-	-	-	-	-	-	30.5	27.6
164	-	-	-	-	-	-	-	-	-	-	-	26.4

Boom extension sequence												%	
Tele 1	0	45	45	90	45	90	45	90	90	90	90	90	100
Tele 2	0	0	45	45	45	90	45	45	90	90	90	90	100
Tele 3	0	0	0	0	45	0	45	45	45	90	90	90	100
Tele 4	0	0	0	0	0	0	45	45	45	45	90	90	100

# STERLING CRANE

## Lifting capacities main boom in 1,000 lb

**154,000 lb**   **360°** **85%**

Radius ft	Main boom											
	49.0 ft	65.0 ft	81.0 ft	97.0 ft	97.0 ft	113.0 ft	113.0 ft	129.0 ft	144.5 ft	160.5 ft	176.5 ft	190.0 ft
	1,000 lb											
10	579.0	-	-	-	-	-	-	-	-	-	-	-
11	553.0	548.0	-	-	-	-	-	-	-	-	-	-
13	505.0	503.0	-	-	-	-	-	-	-	-	-	-
15	467.0	465.0	-	-	-	-	-	-	-	-	-	-
16	448.0	446.0	401.0	300.0	343.0	-	-	-	-	-	-	-
19	404.0	400.0	368.0	276.0	329.0	253.0	255.0	-	-	-	-	-
23	352.0	350.0	325.0	248.0	306.0	229.0	242.0	209.0	-	-	-	-
26	324.0	321.0	297.0	232.0	284.0	212.0	230.0	201.0	167.0	-	-	-
29	297.0	295.0	282.0	216.0	267.0	200.0	218.0	189.5	159.5	135.0	-	-
33	265.0	263.0	254.0	195.0	241.0	181.0	204.0	175.5	149.0	128.5	102.0	-
39	223.0	219.0	220.0	170.0	215.0	155.5	184.0	155.5	135.0	120.5	98.0	84.0
46	-	168.0	169.0	145.0	172.5	133.0	162.5	134.0	121.0	109.0	92.5	79.0
52	-	137.0	137.0	129.0	140.0	118.0	144.5	121.0	111.0	99.5	86.0	75.0
59	-	-	110.0	108.0	113.5	105.5	118.0	107.0	101.0	89.0	80.5	70.5
65	-	-	93.0	91.0	97.5	91.5	100.5	97.5	93.0	82.0	75.0	65.0
72	-	-	-	76.0	80.5	77.5	85.0	81.5	81.5	76.0	69.5	61.0
79	-	-	-	65.5	70.0	65.5	73.5	71.0	71.0	70.0	64.0	57.1
85	-	-	-	57.5	62.0	58.1	65.5	63.0	63.0	64.5	60.0	53.9
92	-	-	-	-	-	49.9	57.4	54.7	54.9	56.5	55.9	49.7
98	-	-	-	-	-	43.6	51.5	49.1	49.1	50.6	52.4	46.9
105	-	-	-	-	-	-	-	42.9	42.9	44.7	46.7	43.6
111	-	-	-	-	-	-	-	38.3	38.3	40.1	42.2	41.2
118	-	-	-	-	-	-	-	34.0	33.5	35.3	37.5	37.5
124	-	-	-	-	-	-	-	-	30.1	31.7	33.9	33.9
131	-	-	-	-	-	-	-	-	26.5	27.9	30.1	30.1
138	-	-	-	-	-	-	-	-	-	24.5	26.8	26.8
144	-	-	-	-	-	-	-	-	-	-	24.1	24.1
151	-	-	-	-	-	-	-	-	-	-	21.7	21.3
157	-	-	-	-	-	-	-	-	-	-	19.5	19.3
164	-	-	-	-	-	-	-	-	-	-	-	17.2

Boom extension sequence												%
Tele 1	0	45	45	90	45	90	45	90	90	90	90	100
Tele 2	0	0	45	45	45	90	45	45	90	90	90	100
Tele 3	0	0	0	0	45	0	45	45	45	90	90	100
Tele 4	0	0	0	0	0	0	45	45	45	45	90	100

# STERLING CRANE

## Lifting capacities main boom in 1,000 lb

**97,000 lb**   **360°** **85%**

Radius ft	Main boom											
	49.0 ft	65.0 ft	81.0 ft	97.0 ft	97.0 ft	113.0 ft	113.0 ft	129.0 ft	144.5 ft	160.5 ft	176.5 ft	190.0 ft
	1,000 lb											
10	567.0	-	-	-	-	-	-	-	-	-	-	-
11	543.0	540.0	-	-	-	-	-	-	-	-	-	-
13	496.0	494.0	-	-	-	-	-	-	-	-	-	-
15	458.0	454.0	-	-	-	-	-	-	-	-	-	-
16	441.0	438.0	401.0	300.0	343.0	-	-	-	-	-	-	-
19	395.0	393.0	368.0	276.0	329.0	253.0	255.0	-	-	-	-	-
23	345.0	343.0	325.0	248.0	306.0	229.0	242.0	209.0	-	-	-	-
26	311.0	309.0	297.0	232.0	284.0	212.0	230.0	201.0	167.0	-	-	-
29	279.0	275.0	275.0	216.0	267.0	200.0	218.0	189.5	159.5	135.0	-	-
33	233.0	227.0	229.0	195.0	233.0	181.0	204.0	175.5	149.0	128.5	102.0	-
39	170.0	165.5	167.0	162.5	170.0	155.5	173.5	155.5	135.0	120.5	98.0	84.0
46	-	119.5	122.0	118.5	125.0	119.5	130.5	127.5	121.0	109.0	92.5	79.0
52	-	96.5	97.5	95.5	101.0	96.5	105.5	102.0	101.5	99.5	86.0	75.0
59	-	-	77.0	75.0	79.5	76.0	85.0	81.5	81.5	82.5	80.5	70.5
65	-	-	65.0	63.0	67.0	63.5	71.5	69.5	69.5	70.5	72.0	65.0
72	-	-	-	51.2	56.4	52.3	60.0	57.8	58.0	59.7	62.0	61.0
79	-	-	-	41.6	47.1	42.4	50.8	48.4	48.6	50.2	52.4	52.4
85	-	-	-	35.1	40.8	35.8	44.2	41.5	41.7	43.5	45.7	45.9
92	-	-	-	-	-	29.4	37.5	34.9	35.1	36.9	39.3	39.3
98	-	-	-	-	-	24.8	32.5	30.1	30.3	32.0	34.3	34.3
105	-	-	-	-	-	-	-	25.5	25.5	27.3	29.5	29.5
111	-	-	-	-	-	-	-	22.1	21.7	23.5	25.9	25.9
118	-	-	-	-	-	-	-	18.5	18.3	19.8	22.1	22.1
124	-	-	-	-	-	-	-	-	15.5	17.0	19.2	19.2
131	-	-	-	-	-	-	-	-	12.8	13.9	16.4	16.4
138	-	-	-	-	-	-	-	-	-	11.6	13.6	13.6
144	-	-	-	-	-	-	-	-	-	-	11.7	11.7
151	-	-	-	-	-	-	-	-	-	-	9.6	9.6
157	-	-	-	-	-	-	-	-	-	-	8.0	8.0
164	-	-	-	-	-	-	-	-	-	-	-	6.4

Boom extension sequence												%
Tele 1	0	45	45	90	45	90	45	90	90	90	90	100
Tele 2	0	0	45	45	45	90	45	45	90	90	90	100
Tele 3	0	0	0	0	45	0	45	45	45	90	90	100
Tele 4	0	0	0	0	0	0	45	45	45	45	90	100

# STERLING CRANE

## Lifting capacities main boom in 1,000 lb

Radius ft	Main boom				
	49.0 ft	65.0 ft	81.0 ft	97.0 ft	113.0 ft
10	485.0	-	-	-	-
11	462.0	429.0	-	-	-
13	413.0	384.0	-	-	-
15	367.0	336.0	-	-	-
16	344.0	311.0	310.0	246.0	-
19	274.0	249.0	249.0	216.0	220.0
23	179.0	168.0	165.5	158.0	156.0
26	129.5	121.5	121.5	114.5	113.5
29	99.5	92.5	92.5	87.0	86.0
33	72.0	65.0	65.0	62.0	61.5
39	48.6	42.8	43.0	39.5	39.7
46	-	25.6	26.1	23.0	23.2
52	-	17.0	17.2	14.5	15.0
59	-	-	9.9	7.3	8.2
65	-	-	4.7	-	3.1

Boom extension sequence					%
Tele 1	0	45	45	90	90
Tele 2	0	0	45	45	90
Tele 3	0	0	0	0	0
Tele 4	0	0	0	0	0

## Notes to lifting capacity

Ratings do not exceed 85%/75% of tipping load. 75% ratings are in compliance with DIN 15019.2 (test load=1.25x suspended load + 0.1xdead weight of boom reduced to boom point).

Weights of hook blocks and slings are part of the load, and are to be deducted from the capacity ratings.

Crane operation with main boom is permissible up to a

wind pressure of ..... 60 N/m<sup>2</sup>  
wind speed of ..... 32 ft/s

Consult operation manual for further details on wind speed.

Crane operation is subject to computer charts, only!

For crane operation, consult operation manual first.