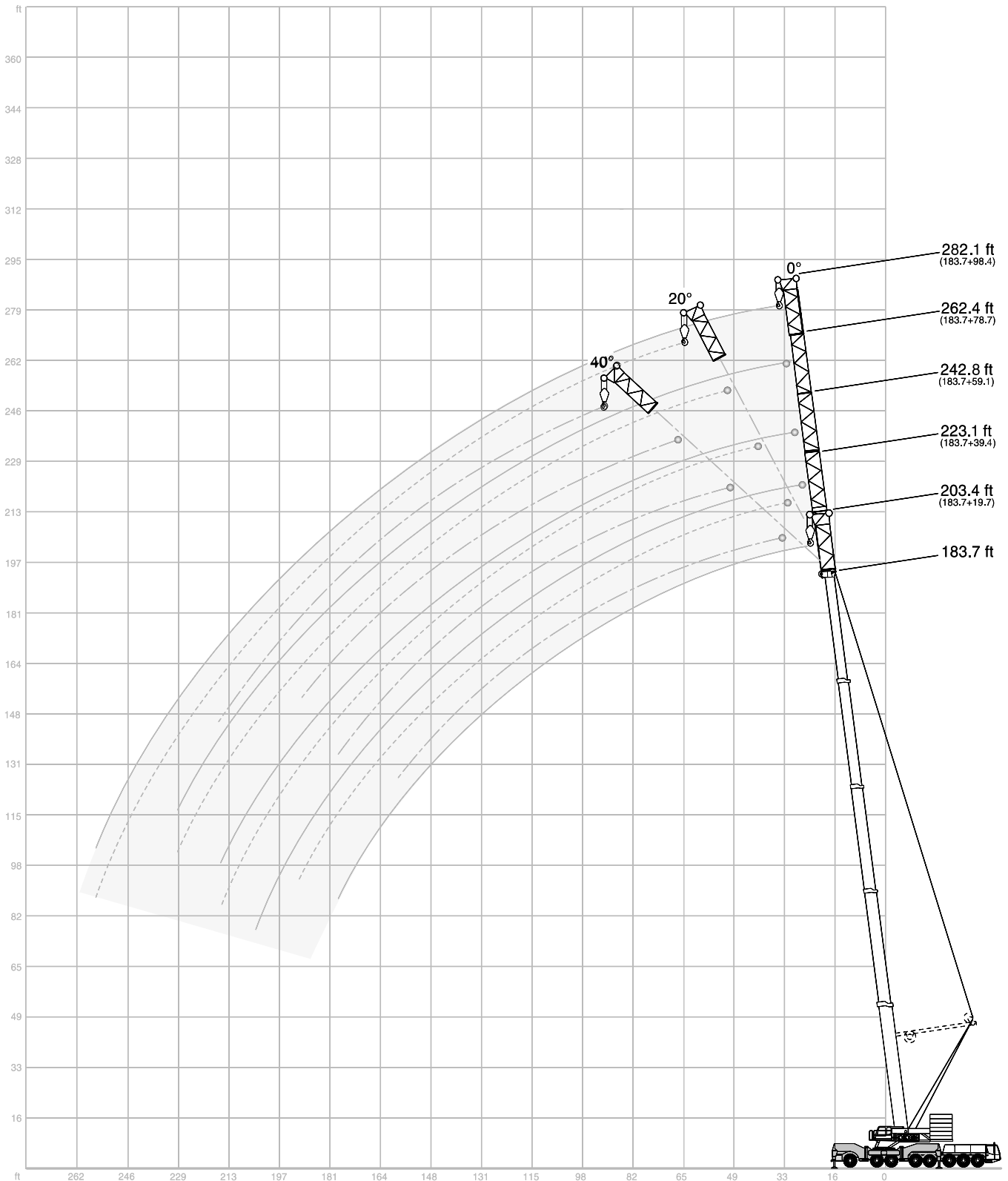




LIFTING CHARTS - All Terrain Cranes


TEREX MODEL AC 500-2 - 600 TON CAPACITY


**WORKING RANGES MAIN BOOM EXTENSION WITH / WITHOUT SSL**



# STERLING CRANE

## LIFTING CAPACITIES MAIN BOOM EXTENSION

308,600 lb		 360°											85 %	
183.7 ft Main boom														
Radius	Extension												Radius	
	19.7 ft			39.4 ft			59.1 ft			78.7 ft				98.4 ft
ft	0°	0°	20°	40°*	0°	20°	40°*	0°	20°	40°*	0°	20°	40°	ft
39	106.7	-	-	-	-	-	-	-	-	-	-	-	-	39
46	97.4	82.7	-	-	68.6	-	-	-	-	-	-	-	-	46
53	89.1	75.6	-	-	63.5	-	-	55.3	-	-	-	-	-	53
59	82.0	69.4	59.7	-	59.1	-	-	51.6	-	-	45.0	-	-	59
66	75.6	63.9	56.4	49.4	54.9	43.7	-	48.1	-	-	41.9	-	-	66
72	69.9	59.1	53.1	47.2	51.1	41.7	-	45.0	-	-	39.2	-	-	72
79	65.0	54.9	50.0	45.2	47.8	39.7	34.2	42.1	33.3	-	36.8	-	-	79
85	60.6	51.1	47.2	43.2	44.8	37.9	33.1	39.5	31.7	-	34.6	-	-	85
92	56.9	48.1	44.5	41.2	42.1	36.2	32.0	37.3	30.2	-	32.6	25.6	-	92
98	53.4	45.2	42.1	39.2	39.5	34.6	30.9	35.1	28.9	24.9	30.6	24.5	-	98
105	50.0	42.5	39.9	37.3	37.5	33.1	29.8	33.3	27.8	24.0	29.1	23.4	-	105
112	47.0	40.1	37.9	35.5	35.3	31.5	28.7	31.3	26.5	23.4	27.6	22.5	19.4	112
118	44.3	37.9	35.9	34.0	33.5	30.0	27.6	29.8	25.4	22.7	26.0	21.6	18.7	118
125	41.7	35.7	34.2	32.2	31.7	28.7	26.7	28.2	24.5	22.0	24.7	20.7	18.1	125
131	39.2	34.0	32.4	30.6	30.0	27.6	25.8	26.9	23.4	21.4	23.6	19.8	17.4	131
138	37.0	32.0	30.9	29.1	28.4	26.2	24.9	25.6	22.5	20.5	22.3	19.0	16.8	138
144	35.1	30.2	29.5	28.0	27.1	25.1	24.0	24.3	21.6	19.8	21.2	18.3	16.3	144
151	33.1	28.7	28.2	26.7	25.6	24.0	23.1	22.9	20.7	19.2	20.3	17.4	15.7	151
158	31.5	27.3	26.9	25.6	24.5	23.1	22.5	21.8	20.1	18.7	19.2	16.8	15.2	158
164	30.0	25.8	25.6	-	23.1	22.0	21.6	20.7	19.2	18.1	18.3	16.1	14.8	164
177	27.3	23.6	23.4	-	20.9	20.3	20.1	18.5	17.9	16.8	16.5	14.8	13.9	177
190	-	21.6	21.4	-	19.0	18.5	-	16.8	16.3	15.7	14.8	13.4	13.0	190
203	-	19.8	-	-	17.2	16.8	-	15.0	15.0	-	13.2	12.1	12.1	203
217	-	-	-	-	15.7	15.2	-	13.4	13.4	-	11.9	11.0	11.2	217
230	-	-	-	-	-	-	-	12.1	12.1	-	10.4	9.9	-	230
243	-	-	-	-	-	-	-	10.8	-	-	9.0	8.6	-	243
256	-	-	-	-	-	-	-	-	-	-	7.7	7.5	-	256

88,200 lb		 360°											85 %	
183.7 ft Main boom														
Radius	Extension												Radius	
	19.7 ft			39.4 ft			59.1 ft			78.7 ft				98.4 ft
ft	0°	0°	20°	40°	0°	20°	40°	0°	20°	40°	0°	20°	40°	ft
39	106.7	-	-	-	-	-	-	-	-	-	-	-	-	39
46	97.4	82.7	-	-	68.6	-	-	-	-	-	-	-	-	46
53	81.6	75.6	-	-	63.5	-	-	55.3	-	-	-	-	-	53
59	65.0	63.7	59.7	-	59.1	-	-	51.6	-	-	45.0	-	-	59
66	52.7	51.4	56.4	49.4	50.9	43.7	-	48.1	-	-	41.9	-	-	66
72	43.0	41.9	47.6	47.2	41.7	41.7	-	41.4	-	-	39.2	-	-	72
79	35.3	34.2	39.5	43.9	34.2	39.7	34.2	34.2	33.3	-	34.4	-	-	79
85	28.9	28.0	32.6	36.6	28.0	35.1	33.1	28.0	31.7	-	28.4	-	-	85
92	23.6	22.9	27.1	30.4	22.9	29.1	32.0	23.1	30.2	-	23.6	25.6	-	92
98	19.0	18.5	22.3	25.4	18.7	24.3	29.3	19.0	26.2	24.9	19.4	24.5	-	98
105	15.2	15.0	18.3	20.9	15.0	20.3	24.7	15.2	22.0	24.0	15.9	23.4	-	105
112	11.9	11.7	14.8	17.0	11.9	16.5	20.7	12.1	18.5	23.4	12.8	20.5	19.4	112
118	9.0	8.6	11.5	13.4	9.3	13.4	17.2	9.5	15.2	20.5	10.1	17.2	18.7	118
125	6.4	6.2	8.6	10.4	6.8	10.8	14.1	7.1	12.3	17.2	7.7	14.3	18.1	125
131	-	-	6.2	7.7	4.6	8.4	11.0	5.1	9.9	14.3	5.7	11.9	17.4	131
138	-	-	-	5.3	-	6.2	8.6	-	7.7	11.7	-	9.5	14.8	138
144	-	-	-	-	-	-	6.2	-	5.7	9.3	-	7.5	12.3	144
151	-	-	-	-	-	-	-	-	-	7.3	-	5.7	10.1	151
158	-	-	-	-	-	-	-	-	-	5.3	-	-	7.9	158
164	-	-	-	-	-	-	-	-	-	-	-	-	6.2	164
177	-	-	-	-	-	-	-	-	-	-	-	-	-	177

### Remarks

\* 264,600 lb Counterweight

# STERLING CRANE

## LIFTING CAPACITIES MAIN BOOM EXTENSION WITH SSL 0°

396,800 lb  360° 85 %

### 183.7 ft Main boom

Radius ft	Extension												Radius ft	
	19.7 ft			39.4 ft			59.1 ft			78.7 ft				98.4 ft
	0°	0°	20°	40°	0°	20°	40°	0°	20°	40°	0°	20°	40°	
	1,000 lb													
30	110.2	-	-	-	-	-	-	-	-	-	-	-	-	30
33	110.2	-	-	-	-	-	-	-	-	-	-	-	-	33
39	110.2	100.8	-	-	82.5	-	-	-	-	-	-	-	-	39
46	110.2	99.4	-	-	81.8	-	-	66.8	-	-	55.3	-	-	46
53	110.2	97.7	85.1	-	80.7	-	-	63.9	-	-	53.1	-	-	53
59	110.2	95.5	82.2	67.9	79.1	59.1	-	61.1	-	-	50.9	-	-	59
66	107.6	92.8	79.1	65.7	77.4	56.4	-	58.4	-	-	48.9	-	-	66
72	104.7	90.2	76.3	63.5	75.2	54.0	-	55.8	39.2	-	46.7	-	-	72
79	101.9	87.1	73.2	61.5	72.8	51.8	41.2	53.1	37.9	-	44.8	-	-	79
85	98.8	83.8	70.1	59.5	70.1	49.8	40.1	50.7	36.4	-	43.0	30.9	-	85
92	95.7	80.7	67.0	57.8	67.2	47.8	39.2	48.5	35.3	28.9	41.0	29.8	-	92
98	92.4	77.4	64.2	56.2	64.6	46.1	38.1	46.1	34.0	28.2	39.2	28.7	-	98
105	89.1	74.3	61.3	54.7	61.7	44.5	37.5	44.1	33.1	27.6	37.5	27.6	22.3	105
112	85.8	71.0	58.6	53.1	59.1	43.0	36.6	42.1	32.0	27.1	35.9	26.7	21.8	112
118	82.0	68.1	56.4	51.8	56.7	41.7	35.9	40.3	31.1	26.7	34.4	25.8	21.2	118
125	76.1	65.3	54.2	50.5	54.0	40.3	35.1	38.6	30.2	26.0	32.8	24.9	20.7	125
131	70.5	62.6	52.5	49.2	51.8	39.2	34.4	37.0	29.5	25.6	31.5	24.3	20.3	131
138	65.8	60.1	50.9	48.2	49.6	38.3	33.8	35.7	28.8	25.2	30.3	23.6	19.8	138
144	61.1	57.5	49.4	47.2	47.4	37.3	33.3	34.4	28.0	24.9	29.1	22.9	19.4	144
151	57.0	55.2	48.1	46.3	45.6	36.4	33.0	33.3	27.3	24.6	28.0	22.3	19.1	151
158	52.9	52.9	46.7	45.4	43.9	35.5	32.6	32.2	26.7	24.3	26.9	21.6	18.7	158
164	49.5	49.5	45.6	-	42.2	34.7	32.3	31.2	26.1	23.9	26.1	21.1	18.4	164
177	42.9	43.2	42.9	-	39.2	33.4	31.7	29.4	25.1	23.4	24.6	20.1	17.9	177
190	-	37.8	38.6	-	36.8	32.4	-	28.1	24.3	22.9	23.1	19.2	17.3	190
203	-	32.0	-	-	34.0	31.7	-	26.9	23.5	-	22.0	18.3	17.1	203
217	-	-	-	-	29.4	30.6	-	25.8	22.7	-	20.9	17.6	16.8	217
230	-	-	-	-	-	-	-	24.8	22.3	-	20.0	17.2	-	230
243	-	-	-	-	-	-	-	-	-	-	19.0	16.8	-	243
256	-	-	-	-	-	-	-	-	-	-	17.9	16.5	-	256

220,500 lb  360° 85 %

ft	Extension												ft	
	19.7 ft			39.4 ft			59.1 ft			78.7 ft				98.4 ft
	0°	0°	20°	40°	0°	20°	40°	0°	20°	40°	0°	20°	40°	
	1,000 lb													
30	110.2	-	-	-	-	-	-	-	-	-	-	-	-	30
33	110.2	-	-	-	-	-	-	-	-	-	-	-	-	33
39	110.2	100.8	-	-	82.5	-	-	-	-	-	-	-	-	39
46	110.2	99.4	-	-	81.8	-	-	66.8	-	-	55.3	-	-	46
53	110.2	97.7	85.1	-	80.7	-	-	63.9	-	-	53.1	-	-	53
59	110.2	95.5	82.2	67.9	79.1	59.1	-	61.1	-	-	50.9	-	-	59
66	107.6	92.8	79.1	65.7	77.4	56.4	-	58.4	-	-	48.9	-	-	66
72	104.7	90.2	76.3	63.5	75.2	54.0	-	55.8	39.2	-	46.7	-	-	72
79	93.5	87.1	73.2	61.5	72.8	51.8	41.2	53.1	37.9	-	44.8	-	-	79
85	81.4	81.8	70.1	59.5	70.1	49.8	40.1	50.7	36.4	-	43.0	30.9	-	85
92	71.2	71.7	67.0	57.8	67.2	47.8	39.2	48.5	35.3	28.9	41.0	29.8	-	92
98	62.8	63.3	64.2	56.2	64.6	46.1	38.1	46.1	34.0	28.2	39.2	28.7	-	98
105	55.6	56.0	59.5	54.7	57.3	44.5	37.5	44.1	33.1	27.6	37.5	27.6	22.3	105
112	49.2	49.6	52.9	53.1	50.9	43.0	36.6	42.1	32.0	27.1	35.9	26.7	21.8	112
118	43.4	43.9	47.2	49.4	45.2	41.7	35.9	40.3	31.1	26.7	34.4	25.8	21.2	118
125	38.6	38.8	41.9	44.1	40.1	40.3	35.1	38.6	30.2	26.0	32.8	24.9	20.7	125
131	34.0	34.4	37.3	39.0	35.7	39.2	34.4	37.0	29.5	25.6	31.5	24.3	20.3	131
138	30.3	30.6	33.2	34.7	32.0	35.5	33.8	33.4	28.8	25.2	30.3	23.6	19.8	138
144	26.7	26.9	29.1	30.4	28.2	31.7	33.3	29.8	28.0	24.9	29.1	22.9	19.4	144
151	23.6	23.8	25.9	27.0	25.1	28.4	30.3	26.7	27.3	24.6	27.1	22.3	19.1	151
158	20.5	20.7	22.7	23.6	22.0	25.1	27.3	23.6	26.7	24.3	25.1	21.6	18.7	158
164	18.1	18.3	20.0	-	19.5	22.4	24.3	21.1	24.4	23.9	22.6	21.1	18.4	164
177	13.6	13.7	15.0	-	14.9	17.3	18.5	16.3	19.6	22.0	17.9	20.1	17.9	177
190	-	9.8	10.8	-	11.0	12.9	-	12.3	15.2	17.1	13.8	17.5	17.3	190
203	-	6.4	-	-	7.7	9.1	-	9.0	11.5	-	10.4	13.7	15.5	203
217	-	-	-	-	4.9	6.0	-	6.2	7.9	-	7.3	10.1	11.9	217
230	-	-	-	-	-	-	-	-	5.1	-	4.9	7.1	-	230


# STERLING CRANE

## LIFTING CAPACITIES MAIN BOOM EXTENSION WITH SSL 30°

396,800 lb  360° 85 %

### 183.7 ft Main boom

Radius	Extension				Radius
	39.4 ft 0°	59.1 ft 0°	78.7 ft 0°	98.4 ft 0°	
ft	1,000 lb				ft
39	108.0	92.4	-	-	39
46	104.7	88.2	72.8	63.1	46
53	101.2	84.2	67.5	58.4	53
59	97.2	80.2	62.8	54.2	59
66	93.0	76.3	58.6	50.5	66
72	88.6	72.5	54.9	47.2	72
79	84.2	69.0	51.6	44.3	79
85	79.8	65.5	48.7	41.7	85
92	75.4	62.2	46.1	39.2	92
98	71.2	59.1	43.7	37.3	98
105	67.2	56.2	41.9	35.5	105
112	63.3	53.4	39.9	33.7	112
118	60.0	50.7	38.4	32.4	118
125	56.7	48.3	36.8	31.1	125
131	53.8	46.1	35.3	29.8	131
138	51.1	44.1	34.1	28.7	138
144	48.5	42.1	32.8	27.6	144
151	46.1	40.3	31.7	26.6	151
158	43.7	38.6	30.6	25.6	158
164	41.6	37.0	29.5	24.7	164
177	37.4	34.0	27.6	23.0	177
190	33.3	31.0	25.9	21.6	190
203	-	28.1	24.3	20.2	203
217	-	24.8	22.5	19.0	217
230	-	-	20.9	18.0	230
243	-	-	-	16.8	243
256	-	-	-	15.7	256

220,500 lb  360° 85 %

### 183.7 ft Main boom

Radius	Extension				Radius
	39.4 ft 0°	59.1 ft 0°	78.7 ft 0°	98.4 ft 0°	
ft	1,000 lb				ft
39	108.0	92.4	-	-	39
46	104.7	88.2	72.8	63.1	46
53	101.2	84.2	67.5	58.4	53
59	97.2	80.2	62.8	54.2	59
66	93.0	76.3	58.6	50.5	66
72	88.6	72.5	54.9	47.2	72
79	84.2	69.0	51.6	44.3	79
85	79.8	65.5	48.7	41.7	85
92	71.7	62.2	46.1	39.2	92
98	63.3	59.1	43.7	37.3	98
105	56.0	56.2	41.9	35.5	105
112	49.6	50.9	39.9	33.7	112
118	43.9	45.2	38.4	32.4	118
125	38.8	40.1	36.8	31.1	125
131	34.4	35.7	35.3	29.8	131
138	30.6	32.0	32.5	28.7	138
144	26.9	28.2	29.8	27.6	144
151	23.8	25.1	26.7	26.3	151
158	20.7	22.0	23.6	25.1	158
164	18.3	19.5	21.1	22.6	164
177	13.7	14.9	16.3	17.9	177
190	9.8	11.0	12.3	13.8	190
203	-	7.6	9.0	10.4	203
217	-	4.9	6.2	7.3	217
230	-	-	-	4.9	230

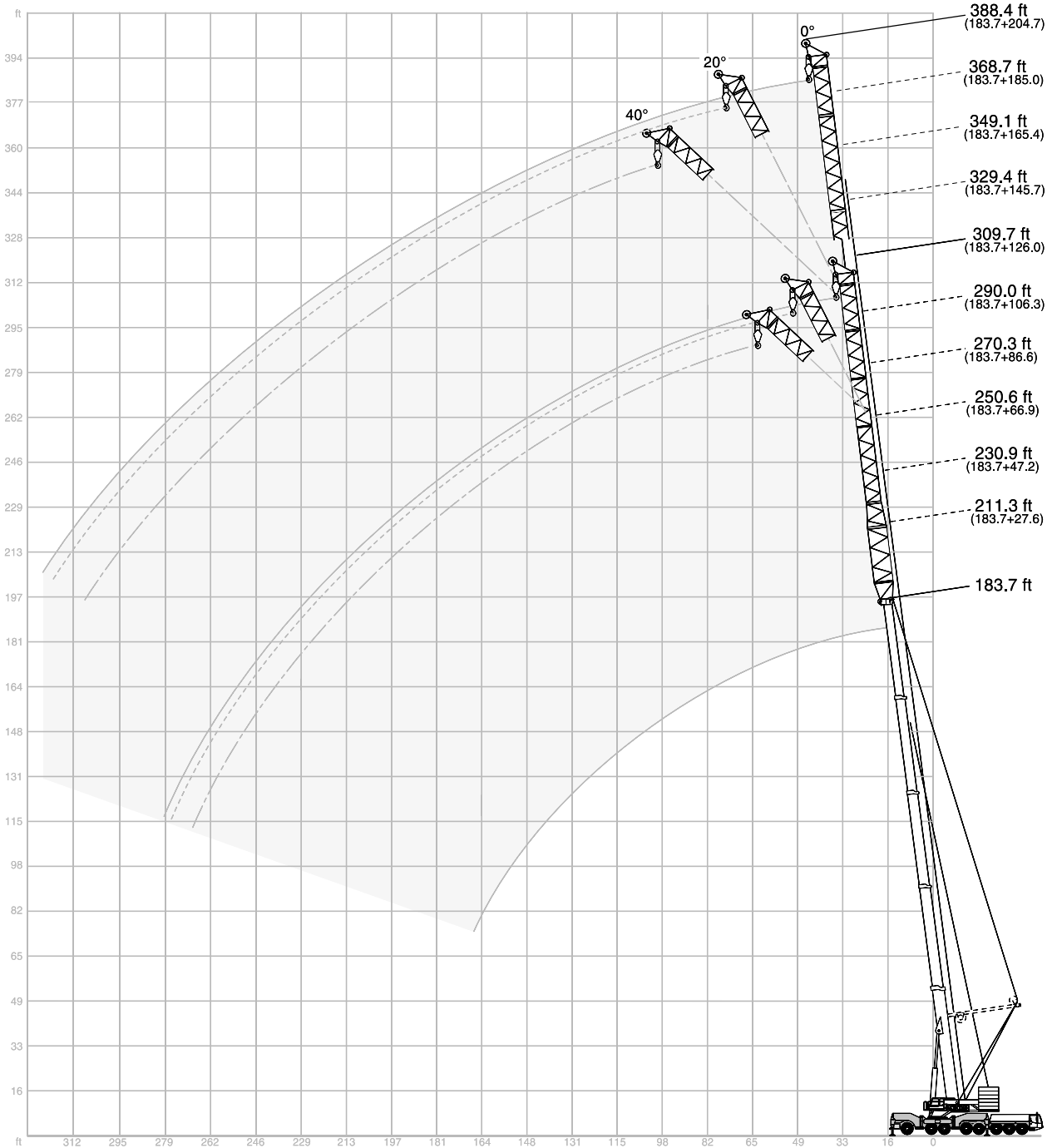
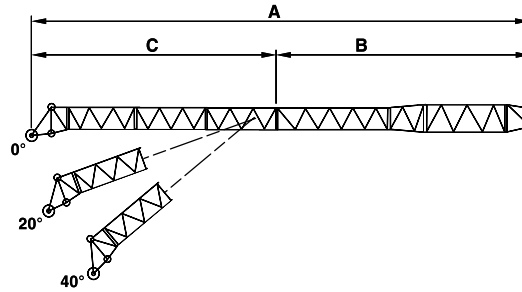
# STERLING CRANE

## WORKING RANGES FIXED FLY JIB WITH / WITHOUT SSL

### OFFSET FIXED FLY JIB

A	B	C 0° / 20° / 40°
86.6 ft	48.9 ft	37.7 ft
106.3 ft	48.9 ft	57.4 ft
126.0 ft	68.6 ft	57.4 ft
145.7 ft	68.6 ft	77.0 ft
165.4 ft	88.2 ft	77.0 ft
185.0 ft	88.2 ft	96.8 ft
204.7 ft	107.9 ft	96.8 ft

(27.6 ft, 47.2 ft + 66.9 ft only 0°)



# STERLING CRANE

## LIFTING CAPACITIES FIXED FLY JIB

360° 85 %

### 183.4 ft Main boom

Radius ft	Fly jib												Radius ft						
	27.6 ft			47.2 ft			66.9 ft			86.6 ft				106.3 ft			126.0 ft		
	0°	0°	0°	0°	20°	40°	0°	20°	40°	0°	20°	40°		0°	20°	40°			
	1,000 lb																		
46	90.6	76.9	-	-	-	-	-	-	-	-	-	-	-	-	-	-	46		
53	82.2	70.3	62.6	52.7	-	-	-	-	-	-	-	-	-	-	-	-	53		
59	74.7	64.4	58.0	48.7	-	-	-	-	-	-	-	-	-	-	-	-	59		
66	68.3	59.1	53.8	45.2	40.6	-	-	-	-	-	-	-	-	-	-	-	66		
72	62.6	54.2	49.8	41.9	37.9	-	-	-	-	-	-	-	-	-	-	-	72		
79	58.1	50.3	46.5	39.1	35.5	33.5	-	-	-	-	-	-	-	-	-	-	79		
85	53.6	46.3	43.2	36.4	33.3	31.7	-	-	-	-	-	-	-	-	-	-	85		
92	49.9	43.1	40.3	34.1	31.3	30.0	-	-	-	-	-	-	-	-	-	-	92		
98	46.3	39.9	37.5	31.7	29.5	28.2	-	-	-	-	-	-	-	-	-	-	98		
105	43.5	37.4	35.2	29.8	28.0	26.9	-	-	-	-	-	-	-	-	-	-	105		
112	40.8	34.8	32.8	27.8	26.5	25.4	-	-	-	-	-	-	-	-	-	-	112		
118	38.4	32.7	31.0	26.2	25.1	24.3	-	-	-	-	-	-	-	-	-	-	118		
125	35.9	30.6	29.1	24.7	23.8	22.9	-	-	-	-	-	-	-	-	-	-	125		
131	34.0	28.9	27.4	23.4	22.5	21.8	-	-	-	-	-	-	-	-	-	-	131		
144	30.3	25.7	24.5	20.8	20.3	19.8	-	-	-	-	-	-	-	-	-	-	144		
158	27.2	22.9	21.9	18.5	18.3	18.1	-	-	-	-	-	-	-	-	-	-	158		
171	24.4	20.5	19.7	16.4	16.4	16.5	-	-	-	-	-	-	-	-	-	-	171		
184	21.5	18.4	18.0	14.7	14.8	14.9	-	-	-	-	-	-	-	-	-	-	184		
197	18.6	16.5	16.5	13.2	13.1	13.2	-	-	-	-	-	-	-	-	-	-	197		
210	-	14.7	15.0	11.7	11.7	-	-	-	-	-	-	-	-	-	-	-	210		
223	-	-	13.7	10.6	10.6	-	-	-	-	-	-	-	-	-	-	-	223		
236	-	-	12.4	9.5	9.5	-	-	-	-	-	-	-	-	-	-	-	236		
249	-	-	-	8.6	-	-	-	-	-	-	-	-	-	-	-	-	249		
263	-	-	-	-	-	-	-	-	-	-	-	-	-	-	-	-	263		
276	-	-	-	-	-	-	-	-	-	-	-	-	-	-	-	-	276		

ft	145.7 ft			165.4 ft			185.0 ft			204.7 ft			ft
	1,000 lb												
72	29.3	-	-	25.8	-	-	-	-	-	-	-	-	72
79	27.3	-	-	24.0	-	-	21.2	-	-	-	-	-	79
85	25.4	-	-	22.3	-	-	19.8	-	-	-	17.2	-	85
92	23.7	-	-	20.7	-	-	18.5	-	-	-	16.0	-	92
98	22.0	20.1	-	19.2	17.9	-	17.2	-	-	-	14.8	-	98
105	20.6	19.0	-	17.9	16.8	-	16.0	-	-	-	13.7	-	105
112	19.2	17.9	16.8	16.5	15.7	-	14.8	13.7	-	-	12.6	-	112
118	18.0	16.8	15.9	15.4	14.8	14.3	13.7	12.8	-	-	11.6	11.0	118
125	16.8	15.9	15.0	14.3	13.9	13.4	12.6	11.9	-	-	10.6	10.4	125
131	15.8	14.8	14.3	13.3	13.0	12.6	11.7	11.2	-	-	9.7	9.5	131
144	13.9	13.2	12.8	11.6	11.2	11.2	10.0	9.7	9.7	-	7.9	8.2	144
158	12.2	11.7	11.5	10.0	9.9	9.9	8.5	8.4	8.4	-	6.4	6.8	158
171	10.8	10.4	10.3	8.7	8.6	8.7	7.2	7.2	7.4	-	5.2	5.6	171
184	9.5	9.3	9.1	7.6	7.5	7.6	6.1	6.2	6.3	-	-	4.4	184
197	8.2	8.2	8.2	6.5	6.5	6.6	5.1	5.1	5.3	-	-	-	197
210	7.2	7.2	7.3	5.5	5.5	5.7	-	-	4.4	-	-	-	210
223	6.2	6.2	6.4	4.6	4.6	4.9	-	-	-	-	-	-	223
236	5.3	5.5	5.6	-	-	-	-	-	-	-	-	-	236
249	4.4	4.6	4.9	-	-	-	-	-	-	-	-	-	249

### Remarks

Counterweight 88,200 lb 132,300 lb 176,400 lb 220,500 lb 264,600 lb 308,600 lb 352,700 lb

Max. capacities with minimum counterweight

Further counterweight configurations on request

# STERLING CRANE

## LIFTING CAPACITIES FIXED FLY JIB WITH SSL

360° 85 %

### 183.4 ft Main boom

Radius	Fly jib												Radius			
	27.6 ft		47.2 ft		66.9 ft		86.6 ft			106.3 ft				126.0 ft		
ft	0°	0°	0°	0°	20°	40°	0°	20°	40°	0°	20°	40°	0°	20°	40°	ft
	1,000 lb															
39	159.0	95.7	-	-	-	-	-	-	-	-	-	-	-	-	-	39
46	146.4	123.2	103.6	58.6	-	-	-	-	-	-	-	-	-	-	-	46
53	134.7	113.1	95.2	81.8	-	-	70.8	-	-	41.9	-	-	41.9	-	-	53
59	124.1	104.3	88.0	75.4	57.1	-	65.7	-	-	57.8	-	-	57.8	-	-	59
66	114.4	96.3	81.6	69.9	54.0	-	60.8	-	-	53.6	-	-	53.6	-	-	66
72	105.6	89.5	76.1	64.8	50.9	43.9	56.7	40.6	-	49.8	-	-	49.8	-	-	72
79	97.8	83.7	71.4	60.7	48.3	41.9	53.0	38.6	-	46.6	35.1	-	46.6	35.1	-	79
85	91.5	77.8	66.8	56.7	45.6	40.1	49.4	36.6	31.3	43.4	33.3	-	43.4	33.3	-	85
92	87.0	73.1	63.2	53.4	43.4	38.6	46.4	34.8	30.4	40.7	31.5	27.3	40.7	31.5	27.3	92
98	82.5	68.3	59.5	50.0	41.2	36.8	43.4	33.1	29.3	37.9	30.0	26.2	37.9	30.0	26.2	98
105	78.5	64.8	56.7	47.4	39.5	35.5	41.1	31.5	28.2	35.7	28.7	25.4	35.7	28.7	25.4	105
112	74.5	61.5	53.8	44.8	37.5	34.0	38.8	30.0	27.3	33.5	27.1	24.3	33.5	27.1	24.3	112
118	71.3	58.8	51.3	42.7	35.9	32.8	36.8	28.7	26.2	31.7	25.8	23.4	31.7	25.8	23.4	118
125	68.1	56.0	48.7	40.6	34.4	31.5	34.8	27.3	25.4	30.0	24.7	22.5	30.0	24.7	22.5	125
131	64.0	53.6	46.2	38.7	33.1	30.4	33.3	26.0	24.3	28.5	23.6	21.6	28.5	23.6	21.6	131
144	55.7	49.2	41.3	35.2	30.6	28.2	30.4	23.8	22.5	25.9	21.4	20.1	25.9	21.4	20.1	144
158	47.6	45.4	37.8	32.0	28.2	26.5	27.9	21.8	20.7	23.6	19.6	18.5	23.6	19.6	18.5	158
171	40.8	41.2	35.2	29.0	26.2	24.7	25.7	20.3	19.2	21.6	18.1	17.2	21.6	18.1	17.2	171
184	35.1	36.0	32.8	26.2	24.5	23.4	23.7	19.0	17.9	19.8	16.8	15.9	19.8	16.8	15.9	184
197	27.3	31.1	30.9	23.7	22.9	-	21.8	17.9	16.8	18.3	15.4	14.8	18.3	15.4	14.8	197
210	-	25.2	29.2	22.3	21.6	-	20.1	17.0	15.9	16.8	14.3	13.7	16.8	14.3	13.7	210
223	-	-	25.8	20.9	20.3	-	18.4	16.1	-	15.4	13.4	12.8	15.4	13.4	12.8	223
236	-	-	19.4	19.8	18.5	-	16.8	15.4	-	14.1	12.6	-	14.1	12.6	-	236
249	-	-	-	16.8	-	-	15.4	14.8	-	12.8	11.7	-	12.8	11.7	-	249
263	-	-	-	-	-	-	14.6	13.4	-	12.0	10.8	-	12.0	10.8	-	263
276	-	-	-	-	-	-	11.0	-	-	11.2	9.9	-	11.2	9.9	-	276
289	-	-	-	-	-	-	-	-	-	9.0	-	-	9.0	-	-	289

ft	145.7 ft			165.4 ft			185.0 ft			204.7 ft			ft
	1,000 lb												
59	33.1	-	-	27.3	-	-	-	-	-	-	-	59	
66	47.2	-	-	27.1	-	-	22.7	-	-	-	-	66	
72	44.1	-	-	39.0	-	-	34.8	-	-	17.4	-	72	
79	41.2	-	-	36.6	-	-	32.6	-	-	28.9	-	79	
85	38.4	26.7	-	34.2	-	-	30.4	-	-	26.9	-	85	
92	36.0	25.8	-	32.1	24.0	-	28.5	-	-	25.2	-	92	
98	33.7	24.7	-	30.0	22.7	-	26.7	-	-	23.6	-	98	
105	31.7	23.6	20.1	28.1	21.6	-	25.0	19.2	-	22.0	-	105	
112	29.8	22.7	19.4	26.2	20.5	18.1	23.4	18.3	-	20.5	15.4	112	
118	28.2	21.8	18.7	24.8	19.6	17.2	22.0	17.4	-	19.2	14.8	118	
125	26.7	20.7	18.3	23.4	18.5	16.5	20.7	16.5	-	17.9	14.1	125	
131	25.4	19.8	17.6	22.0	17.6	15.9	19.5	15.7	13.9	16.8	13.4	131	
144	22.9	18.3	16.5	19.7	16.1	14.6	17.3	14.1	12.8	14.7	12.1	144	
158	20.8	16.8	15.4	17.9	14.6	13.2	15.4	12.6	11.7	12.9	10.8	158	
171	19.0	15.2	14.3	16.2	13.2	12.1	13.9	11.2	10.6	11.5	9.5	171	
184	17.4	14.1	13.4	14.7	11.9	11.2	12.6	9.9	9.5	10.1	8.2	184	
197	16.1	13.0	12.6	13.2	10.8	10.4	11.4	8.8	8.4	9.0	6.8	197	
210	14.8	12.1	11.7	12.1	9.9	9.5	10.3	7.7	7.3	8.0	5.3	210	
223	13.6	11.2	11.0	11.0	9.0	8.8	9.1	6.6	6.4	7.2	-	223	
236	12.3	10.6	10.4	10.1	8.2	8.2	8.2	5.7	5.3	6.4	-	236	
249	11.4	9.9	-	9.0	7.3	7.5	7.5	4.9	4.4	5.6	-	249	
263	10.3	9.3	-	8.3	6.6	7.1	6.6	-	-	4.9	-	263	
276	9.3	8.8	-	7.5	5.7	-	6.0	-	-	-	-	276	
289	8.6	8.2	-	6.6	5.1	-	5.2	-	-	-	-	289	
302	8.0	-	-	5.7	-	-	-	-	-	-	-	302	
315	4.6	-	-	4.9	-	-	-	-	-	-	-	315	
328	-	-	-	-	-	-	-	-	-	-	-	328	

Remarks: see page 20

Counterweight 176,400 lb 220,500 lb 264,600 lb 308,600 lb 352,700 lb 396,800 lb

# STERLING CRANE

## LIFTING CAPACITIES FIXED FLY JIB

360° 85 %

### 169.9 ft Main boom

Radius	Fly jib												Radius			
	27.6 ft		47.2 ft		66.9 ft		86.6 ft			106.3 ft				126.0 ft		
ft	0°	0°	0°	0°	20°	40°	0°	20°	40°	0°	20°	40°	0°	20°	40°	ft
39	117.7	-	-	-	-	-	-	-	-	-	-	-	-	-	-	39
46	106.0	89.1	76.1	-	-	-	-	-	-	-	-	-	-	-	-	46
53	96.1	81.6	70.1	60.6	-	-	-	-	-	-	-	-	-	-	-	53
59	87.5	75.0	64.6	56.0	-	-	48.5	-	-	42.8	-	-	42.8	-	-	59
66	80.0	69.0	59.7	51.6	45.2	-	45.0	-	-	39.7	-	-	39.7	-	-	66
72	73.6	63.7	55.3	47.8	42.3	39.5	41.7	-	-	36.8	-	-	36.8	-	-	72
79	68.6	59.3	51.7	44.5	39.7	37.3	38.8	34.2	-	34.3	30.6	-	34.3	30.6	-	79
85	63.5	54.9	48.1	41.2	37.3	35.3	35.9	32.0	-	31.7	28.7	-	31.7	28.7	-	85
92	59.5	51.3	45.3	38.7	35.1	33.3	33.7	30.2	28.0	29.7	26.9	25.6	29.7	26.9	25.6	92
98	55.6	47.6	42.5	36.2	33.1	31.5	31.5	28.4	26.7	27.6	25.4	24.0	27.6	25.4	24.0	98
105	52.1	44.9	40.3	34.1	31.3	30.0	29.7	26.9	25.4	25.9	24.0	22.9	25.9	24.0	22.9	105
112	48.7	42.1	38.1	32.0	29.5	28.4	27.8	25.4	24.3	24.3	22.5	21.6	24.3	22.5	21.6	112
118	45.9	39.7	36.3	30.3	28.2	27.1	26.2	24.3	23.1	22.8	21.2	20.5	22.8	21.2	20.5	118
125	43.0	37.3	34.4	28.7	26.7	26.0	24.7	22.9	22.0	21.4	20.1	19.4	21.4	20.1	19.4	125
131	40.6	35.3	32.7	27.3	25.6	24.9	23.5	21.8	20.9	20.2	19.0	18.5	20.2	19.0	18.5	131
144	36.0	31.7	29.7	24.8	23.4	22.7	21.2	19.8	19.2	18.0	17.0	16.8	18.0	17.0	16.8	144
158	32.3	28.8	26.9	22.5	21.4	21.2	19.2	18.1	17.6	16.1	15.4	15.2	16.1	15.4	15.2	158
171	29.3	26.1	24.5	20.5	19.6	19.5	17.4	16.5	16.3	14.4	13.9	13.7	14.4	13.9	13.7	171
184	26.8	23.9	22.5	18.7	18.1	18.1	15.8	15.2	15.1	12.9	12.6	12.5	12.9	12.6	12.5	184
197	-	21.6	20.7	17.3	16.8	-	14.6	14.0	14.0	11.8	11.4	11.5	11.8	11.4	11.5	197
210	-	-	19.3	15.9	15.5	-	13.4	12.9	-	10.6	10.4	10.6	10.6	10.4	10.6	210
223	-	-	17.8	14.6	14.3	-	12.3	11.9	-	9.7	9.5	9.7	9.7	9.5	9.7	223
236	-	-	-	13.4	-	-	11.2	11.1	-	8.8	8.7	-	8.8	8.7	-	236
249	-	-	-	-	-	-	10.4	10.4	-	8.0	7.9	-	8.0	7.9	-	249
263	-	-	-	-	-	-	9.6	-	-	7.4	7.4	-	7.4	7.4	-	263
276	-	-	-	-	-	-	-	-	-	6.7	-	-	6.7	-	-	276
289	-	-	-	-	-	-	-	-	-	-	-	-	-	-	-	289

ft	145.7 ft			165.4 ft			185.0 ft			204.7 ft			ft
	0°	20°	40°	0°	20°	40°	0°	20°	40°	0°	20°	40°	
66	35.7	-	-	-	-	-	26.5	-	-	-	-	-	66
72	33.3	-	-	29.5	-	-	26.5	-	-	-	-	-	72
79	31.1	-	-	27.6	-	-	24.7	-	-	21.6	-	-	79
85	28.9	-	-	25.6	-	-	22.9	-	-	20.1	-	-	85
92	27.0	24.0	-	23.8	-	-	21.4	-	-	18.6	-	-	92
98	25.1	22.7	-	22.0	20.5	-	19.8	-	-	17.2	-	-	98
105	23.5	21.4	-	20.6	19.2	-	18.4	17.0	-	16.0	-	-	105
112	21.8	20.1	19.0	19.2	18.1	-	17.0	15.9	-	14.8	14.1	-	112
118	20.5	19.0	18.1	18.0	17.0	16.3	15.9	15.0	-	13.7	13.2	-	118
125	19.2	17.9	17.2	16.8	15.9	15.4	14.8	14.1	-	12.6	12.3	-	125
131	18.1	17.0	16.3	15.7	15.0	14.6	13.8	13.2	12.8	11.7	11.5	-	131
144	16.1	15.2	14.8	13.7	13.2	13.0	11.9	11.5	11.2	9.9	9.9	9.9	144
158	14.3	13.7	13.2	12.1	11.7	11.7	10.3	10.1	9.9	8.4	8.4	8.6	158
171	12.8	12.2	12.0	10.8	10.4	10.4	8.9	8.8	8.9	7.1	7.2	7.4	171
184	11.5	11.1	10.9	9.6	9.1	9.1	7.8	7.7	7.8	5.8	6.1	6.3	184
197	10.3	10.0	9.9	8.3	8.2	8.2	6.8	6.7	6.8	4.9	5.1	5.3	197
210	9.3	9.0	9.0	7.3	7.3	7.3	6.0	5.8	6.0	-	-	4.4	210
223	8.4	8.2	8.2	6.4	6.4	6.4	5.2	5.1	5.1	-	-	-	223
236	7.5	7.3	7.5	5.6	5.6	5.7	-	-	4.4	-	-	-	236
249	6.7	6.6	-	4.9	4.9	5.0	-	-	-	-	-	-	249
263	6.1	6.1	-	-	-	-	-	-	-	-	-	-	263
276	5.5	5.5	-	-	-	-	-	-	-	-	-	-	276
289	5.1	5.1	-	-	-	-	-	-	-	-	-	-	289
302	4.6	-	-	-	-	-	-	-	-	-	-	-	302
315	-	-	-	-	-	-	-	-	-	-	-	-	315

### Remarks

Counterweight 88,200 lb 132,300 lb 176,400 lb 220,500 lb 264,600 lb 308,600 lb 352,700 lb

Max. capacities with minimum counterweight · Further counterweight configurations on request

# STERLING CRANE

## LIFTING CAPACITIES FIXED FLY JIB WITH SSL

360° 85 %

### 169.9 ft Main boom

Radius	Fly jib												Radius				
	27.6 ft			47.2 ft			66.9 ft			86.6 ft				106.3 ft			126.0 ft
	0°	0°	0°	0°	20°	40°	0°	20°	40°	0°	20°	40°	0°	20°	40°		
ft	1,000 lb															ft	
33	179.5	-	-	-	-	-	-	-	-	-	-	-	-	-	-	33	
39	166.0	145.9	126.8	73.9	-	-	-	-	-	-	-	-	-	-	-	39	
46	153.4	134.5	116.0	97.0	-	-	-	-	-	80.7	-	-	-	-	-	46	
53	141.5	124.1	106.5	89.7	-	-	-	-	-	75.0	-	-	-	66.1	-	53	
59	130.7	114.6	97.9	83.1	63.3	-	-	-	-	70.1	-	-	-	61.9	-	59	
66	120.8	106.0	90.4	77.4	59.5	51.1	-	-	-	65.5	47.4	-	-	58.0	-	66	
72	115.1	98.3	83.8	72.1	56.0	48.7	-	-	-	61.3	45.0	-	-	54.5	40.8	72	
79	109.7	91.6	78.3	67.6	52.9	46.5	-	-	-	57.7	42.5	-	-	51.3	38.8	79	
85	104.3	86.9	72.8	63.1	50.0	44.5	-	-	-	54.0	40.3	35.3	-	48.1	36.6	85	
92	99.4	82.3	68.9	59.4	47.4	42.5	-	-	-	51.0	38.4	34.0	-	45.3	34.8	92	
98	94.6	77.8	65.3	55.8	45.2	40.8	-	-	-	48.1	36.4	32.8	-	42.5	32.8	98	
105	88.8	74.0	61.9	52.8	43.0	39.2	-	-	-	45.6	34.6	31.5	-	40.3	31.3	105	
112	83.1	70.1	58.6	49.8	41.0	37.5	-	-	-	43.2	32.8	30.4	-	38.1	29.8	112	
118	76.8	66.8	55.8	47.3	39.2	36.2	-	-	-	41.1	31.3	29.1	-	36.2	28.2	118	
125	70.5	63.5	52.9	44.8	37.5	34.6	-	-	-	39.0	29.8	28.0	-	34.2	26.9	125	
131	65.4	60.6	50.5	42.7	36.2	33.5	-	-	-	37.3	28.4	26.9	-	32.6	25.6	131	
144	55.9	55.2	46.2	38.7	33.3	31.1	-	-	-	34.0	25.8	24.7	-	29.7	23.4	144	
158	48.0	49.1	42.7	35.1	30.6	28.9	-	-	-	31.0	23.8	22.7	-	27.0	21.2	158	
171	41.2	42.3	39.7	31.9	28.4	27.1	-	-	-	28.3	22.3	20.9	-	24.7	19.6	171	
184	32.6	36.4	37.3	28.9	26.7	25.4	-	-	-	25.8	20.7	19.6	-	22.5	18.1	184	
197	-	30.0	34.4	27.6	24.9	-	-	-	-	23.6	19.6	18.5	-	20.7	16.8	197	
210	-	-	30.2	26.1	23.4	-	-	-	-	21.5	18.7	-	-	19.0	15.4	210	
223	-	-	23.4	24.5	21.8	-	-	-	-	20.1	17.9	-	-	17.4	14.6	223	
236	-	-	-	20.6	-	-	-	-	-	19.1	17.0	-	-	15.8	13.4	236	
249	-	-	-	-	-	-	-	-	-	17.9	16.3	-	-	14.6	12.3	249	
263	-	-	-	-	-	-	-	-	-	13.9	-	-	-	13.7	11.5	263	
276	-	-	-	-	-	-	-	-	-	-	-	-	-	12.0	-	276	

ft	145.7 ft			165.4 ft			185.0 ft			204.7 ft			ft
	1,000 lb												
53	40.8	-	-	-	-	-	-	-	-	-	-	53	
59	54.2	-	-	47.6	-	-	-	-	-	-	-	59	
66	50.9	-	-	45.0	-	-	-	28.9	-	-	23.4	66	
72	47.8	-	-	42.8	-	-	-	39.0	-	-	22.9	72	
79	45.1	-	-	40.5	-	-	-	36.5	-	-	32.6	79	
85	42.3	29.8	-	38.1	28.0	-	-	34.2	-	-	30.4	85	
92	40.0	28.7	-	36.2	26.5	-	-	32.1	-	-	28.5	92	
98	37.7	27.3	-	34.2	25.1	-	-	30.0	-	-	26.7	98	
105	35.6	26.2	22.7	32.3	23.8	20.9	-	28.2	21.4	-	25.0	105	
112	33.5	25.1	21.8	30.4	22.5	20.1	-	26.5	20.3	-	23.4	112	
118	31.9	24.0	21.2	28.8	21.4	19.2	-	24.9	19.2	-	21.9	118	
125	30.2	22.9	20.3	27.1	20.3	18.3	-	23.4	18.1	16.3	20.5	125	
131	28.7	21.8	19.6	25.6	19.2	17.4	-	22.0	17.2	15.7	19.3	131	
144	25.9	19.8	18.3	22.8	17.2	15.9	-	19.6	15.4	14.1	17.0	144	
158	23.5	18.1	17.0	20.4	15.7	14.6	-	17.6	13.7	12.8	15.1	158	
171	21.3	16.5	15.9	18.2	14.1	13.2	-	16.0	12.3	11.5	13.6	171	
184	19.4	15.2	14.8	16.5	12.8	12.1	-	14.6	11.0	10.4	12.1	184	
197	17.7	14.1	13.7	14.9	11.7	11.2	-	13.2	9.7	9.3	10.8	197	
210	16.2	13.0	12.8	13.6	10.6	10.4	-	12.0	8.6	8.2	9.6	210	
223	14.8	12.1	11.9	12.3	9.7	9.5	-	10.8	7.5	7.1	8.6	223	
236	13.6	11.5	11.0	11.4	9.0	8.8	-	9.9	6.6	6.2	7.7	236	
249	12.3	10.8	-	10.4	8.2	8.2	-	9.0	5.5	5.1	6.8	249	
263	11.2	10.1	-	9.5	7.5	-	-	8.2	4.6	-	6.0	263	
276	10.3	9.5	-	8.6	6.8	-	-	7.3	-	-	5.3	276	
289	9.6	-	-	7.7	6.0	-	-	6.6	-	-	4.6	289	
302	-	-	-	6.8	5.1	-	-	5.7	-	-	-	302	
315	-	-	-	5.7	-	-	-	5.0	-	-	-	315	

Remarks: see page 22

Counterweight 176,400 lb 220,500 lb 264,600 lb 308,600 lb 352,700 lb 396,800 lb

# STERLING CRANE

## LIFTING CAPACITIES FIXED FLY JIB

360° 85 %

### 139.4 ft Main boom

Radius	Fly jib												Radius			
	27.6 ft		47.2 ft		66.9 ft		86.6 ft			106.3 ft				126.0 ft		
	0°	0°	0°	0°	20°	40°	0°	20°	40°	0°	20°	40°	0°	20°	40°	
ft	1,000 lb															ft
33	172.6	-	-	-	-	-	-	-	-	-	-	-	-	-	-	33
39	152.3	137.8	107.6	-	-	-	-	-	-	-	-	-	-	-	-	39
46	135.1	122.4	101.0	97.0	-	-	-	-	-	-	-	-	-	-	-	46
53	121.0	109.6	94.6	88.6	-	-	76.7	-	-	67.0	-	-	67.0	-	-	53
59	109.1	98.5	88.2	81.1	68.3	-	72.1	-	-	63.1	-	-	63.1	-	-	59
66	99.2	89.3	82.2	74.5	65.3	56.7	67.5	50.3	-	59.5	-	-	59.5	-	-	66
72	91.1	81.6	76.5	68.6	62.2	54.7	63.1	47.8	-	56.0	46.3	-	56.0	46.3	-	72
79	84.4	75.5	71.2	63.6	59.1	52.7	59.1	45.6	39.5	52.8	43.9	-	52.8	43.9	-	79
85	77.8	69.4	65.9	58.6	55.8	50.9	55.1	43.7	38.1	49.6	41.7	38.1	49.6	41.7	38.1	85
92	72.6	64.8	61.3	54.8	52.9	48.7	51.5	41.7	37.0	46.6	39.7	36.6	46.6	39.7	36.6	92
98	67.5	60.2	56.7	50.9	49.8	46.7	47.8	39.7	35.7	43.7	37.7	35.3	43.7	37.7	35.3	98
105	63.2	56.3	53.0	47.8	47.0	44.8	44.8	37.9	34.6	41.1	35.9	34.0	41.1	35.9	34.0	105
112	58.9	52.5	49.4	44.8	44.1	42.8	41.7	36.2	33.3	38.6	34.4	32.6	38.6	34.4	32.6	112
118	55.4	49.3	46.4	42.1	41.7	40.8	39.0	34.6	32.2	36.3	32.8	31.5	36.3	32.8	31.5	118
125	52.0	46.1	43.4	39.5	39.2	38.8	36.4	33.1	31.1	34.0	31.5	30.4	34.0	31.5	30.4	125
131	49.1	43.5	41.2	37.3	37.0	36.8	34.3	31.5	30.0	32.1	30.2	29.3	32.1	30.2	29.3	131
144	43.4	39.0	37.3	33.2	33.1	33.3	30.4	28.7	27.8	28.5	27.6	27.1	28.5	27.6	27.1	144
158	37.9	35.3	34.0	29.8	29.8	30.0	27.3	26.0	25.6	25.4	25.1	25.1	25.4	25.1	25.1	158
171	-	32.1	31.2	27.0	26.8	-	24.7	23.6	23.6	22.8	22.8	22.9	22.8	22.8	22.9	171
184	-	-	28.7	24.6	24.0	-	22.7	21.5	21.6	20.5	20.5	20.7	20.5	20.5	20.7	184
197	-	-	-	22.5	21.4	-	20.9	19.6	-	18.5	18.4	18.4	18.5	18.4	18.4	197
210	-	-	-	20.7	-	-	19.2	18.1	-	16.9	16.5	-	16.9	16.5	-	210
223	-	-	-	-	-	-	17.6	16.8	-	15.4	14.8	-	15.4	14.8	-	223
236	-	-	-	-	-	-	-	-	-	14.0	13.5	-	14.0	13.5	-	236
249	-	-	-	-	-	-	-	-	-	12.6	-	-	12.6	-	-	249

ft	145.7 ft			165.4 ft			185.0 ft			204.7 ft			ft
	1,000 lb												
59	55.8	-	-	48.1	-	-	-	-	-	-	-	-	59
66	52.2	-	-	44.8	-	-	39.7	-	-	-	-	-	66
72	48.9	-	-	41.9	-	-	37.0	-	-	32.2	-	-	72
79	46.1	-	-	39.2	-	-	34.7	-	-	30.1	-	-	79
85	43.2	33.7	-	36.6	31.3	-	32.4	-	-	28.0	-	-	85
92	40.7	32.6	-	34.4	29.8	-	30.4	-	-	26.1	-	-	92
98	38.1	31.3	26.5	32.2	28.4	-	28.4	23.8	-	24.3	-	-	98
105	36.0	30.2	26.2	30.5	27.3	25.8	26.8	22.7	-	22.7	21.2	-	105
112	34.0	29.3	26.0	28.9	26.0	24.7	25.1	21.8	-	21.2	20.1	-	112
118	32.1	28.2	25.6	27.3	24.9	23.6	23.8	20.9	-	20.0	19.2	-	118
125	30.2	27.3	25.1	25.8	23.8	22.5	22.5	20.1	19.4	18.7	18.1	16.8	125
131	28.7	26.2	24.5	24.7	22.9	21.6	21.3	19.4	18.5	17.6	17.2	16.3	131
144	25.7	24.5	23.4	22.5	20.9	19.8	19.1	17.9	17.0	15.5	15.7	15.2	144
158	23.1	22.7	21.8	20.5	19.4	18.1	17.2	16.3	15.7	13.9	14.1	14.1	158
171	20.7	20.7	20.3	18.7	17.7	16.6	15.5	15.0	14.3	12.6	12.8	12.9	171
184	18.7	19.0	18.7	17.0	16.2	15.2	14.0	13.7	13.2	11.4	11.6	11.9	184
197	17.0	17.2	17.0	15.3	14.7	14.0	12.6	12.5	12.0	10.3	10.6	10.7	197
210	15.2	15.4	15.5	13.7	13.2	12.8	11.3	11.2	10.9	9.3	9.6	9.6	210
223	13.7	13.7	-	12.2	11.7	11.6	10.1	9.9	9.8	8.4	8.6	8.5	223
236	12.2	12.1	-	10.7	10.4	-	9.0	8.7	8.8	7.5	7.7	7.2	236
249	10.9	10.8	-	9.2	9.1	-	7.6	7.6	7.9	6.5	6.7	6.0	249
263	9.5	-	-	7.8	7.9	-	6.4	6.6	-	5.2	5.5	4.9	263
276	-	-	-	6.2	7.1	-	5.1	5.7	-	-	-	-	276
289	-	-	-	4.8	-	-	-	-	-	-	-	-	289
302	-	-	-	-	-	-	-	-	-	-	-	-	302

### Remarks

Counterweight 88,200 lb 132,300 lb 176,400 lb 220,500 lb 264,600 lb 308,600 lb 352,700 lb

Max. capacities with minimum counterweight

Further counterweight configurations on request