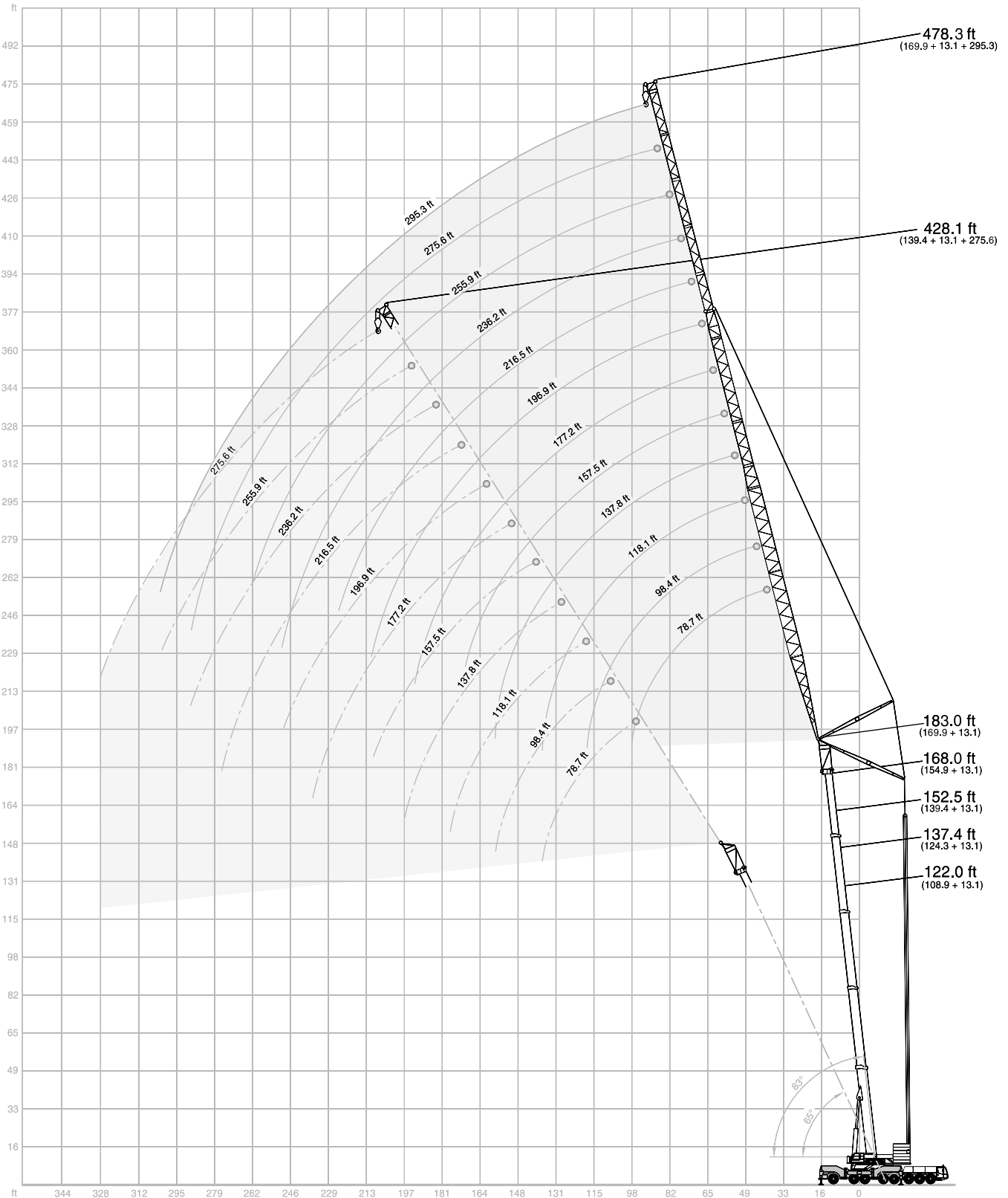




LIFTING CHARTS - All Terrain Cranes

TEREX MODEL AC 500-2 - 600 TON CAPACITY

WORKING RANGES LUFFING FLY JIB, MAIN BOOM 83° TO 65° WITH / WITHOUT SSL



STERLING CRANE

LIFTING CAPACITIES LUFFING FLY JIB, MAIN BOOM 83° TO 65°

360° 85 %

48.2 ft + 13.1 ft Main boom + adapter

		Fly jib																		
		78.7 ft			98.4 ft			118.1 ft			137.8 ft			157.5 ft			177.2 ft			
Radius		83°	73°	65°	83°	73°	65°	83°	73°	65°	83°	73°	65°	83°	73°	65°	83°	73°	65°	Radius
ft		1,000 lb																		ft
46	257.9	-	-	224.9	-	-	-	-	-	-	-	-	-	-	-	-	-	-	-	46
53	235.9	-	-	216.1	-	-	188.5	-	-	151.5	-	-	-	-	-	-	-	-	-	53
59	213.4	-	-	206.1	-	-	185.2	-	-	151.5	-	-	119.9	-	-	-	-	-	-	59
66	191.8	-	-	190.7	-	-	181.9	-	-	151.5	-	-	119.9	-	-	108.0	-	-	-	66
72	173.7	167.1	-	172.8	165.8	-	171.1	-	-	151.5	-	-	119.9	-	-	108.0	-	-	-	72
79	158.7	152.6	-	157.6	151.5	-	155.9	149.5	-	149.3	-	-	119.9	-	-	108.0	-	-	-	79
85	119.0	140.2	135.8	144.8	139.1	-	143.3	137.1	-	141.5	-	-	119.5	-	-	108.0	-	-	-	85
92	-	129.6	125.7	134.0	128.5	124.3	132.3	126.5	-	130.5	124.8	-	114.9	-	-	108.0	-	-	-	92
98	-	-	116.8	116.8	119.3	115.5	122.8	117.5	-	121.0	115.7	-	110.2	113.3	-	106.9	-	-	-	98
105	-	-	-	-	111.3	107.6	114.4	109.3	105.6	112.7	107.6	-	105.6	108.9	-	105.2	104.5	-	-	105
112	-	-	-	-	104.3	100.8	100.1	102.3	98.8	105.4	100.5	-	101.0	101.6	-	103.4	100.1	-	-	112
118	-	-	-	-	-	94.8	83.1	96.1	92.6	98.8	94.1	90.8	95.9	95.5	-	98.5	93.7	-	-	118
125	-	-	-	-	-	-	-	90.4	87.3	90.8	88.6	85.3	91.1	89.7	86.4	92.6	88.2	-	-	125
131	-	-	-	-	-	-	-	85.5	82.2	78.7	83.6	80.5	86.0	84.7	81.4	87.3	83.1	-	-	131
138	-	-	-	-	-	-	-	-	77.8	65.9	78.9	75.8	80.9	80.0	76.9	82.5	78.5	75.4	-	138
144	-	-	-	-	-	-	-	-	-	-	74.7	71.9	74.7	75.8	73.0	78.0	74.3	71.2	-	144
151	-	-	-	-	-	-	-	-	-	-	70.8	68.1	65.5	71.9	69.2	74.1	70.3	67.5	-	151
158	-	-	-	-	-	-	-	-	-	-	-	64.6	55.3	67.9	65.5	68.6	66.8	64.2	-	158
164	-	-	-	-	-	-	-	-	-	-	-	-	-	64.6	62.2	61.1	63.3	60.8	-	164
177	-	-	-	-	-	-	-	-	-	-	-	-	-	-	56.2	45.4	57.3	54.9	-	177
190	-	-	-	-	-	-	-	-	-	-	-	-	-	-	-	-	-	50.0	-	190

		196.9 ft			216.5 ft			236.2 ft			255.9 ft			275.6 ft			295.3 ft			
ft		1,000 lb																		ft
72	92.6	-	-	-	-	-	-	-	-	-	-	-	-	-	-	-	-	-	-	72
79	92.6	-	-	74.1	-	-	62.8	-	-	-	-	-	-	-	-	-	-	-	-	79
85	92.6	-	-	73.6	-	-	62.6	-	-	52.5	-	-	-	-	-	-	-	-	-	85
92	92.6	-	-	73.2	-	-	62.4	-	-	51.8	-	-	41.7	-	-	-	-	-	-	92
98	92.6	-	-	72.5	-	-	61.9	-	-	51.4	-	-	41.2	-	-	34.2	-	-	-	98
105	91.7	-	-	72.1	-	-	61.7	-	-	50.9	-	-	40.6	-	-	33.5	-	-	-	105
112	90.8	-	-	71.7	-	-	61.5	-	-	50.5	-	-	39.9	-	-	33.1	-	-	-	112
118	89.5	84.9	-	71.0	-	-	61.1	-	-	49.8	-	-	39.2	-	-	32.4	-	-	-	118
125	88.4	84.9	-	70.1	68.3	-	60.8	-	-	49.4	-	-	38.8	-	-	31.7	-	-	-	125
131	86.6	82.2	-	69.4	67.9	-	60.2	-	-	48.7	-	-	38.1	-	-	31.3	-	-	-	131
138	81.8	77.6	-	68.8	67.5	-	59.5	61.3	-	48.1	-	-	37.5	-	-	30.6	-	-	-	138
144	77.4	73.4	-	68.1	67.2	-	59.1	60.6	47.4	49.2	-	-	36.8	-	-	30.0	-	-	-	144
151	73.4	69.7	66.8	67.2	66.8	-	58.4	60.0	46.5	48.5	-	-	36.2	37.9	-	29.5	-	-	-	151
158	69.7	66.1	63.5	65.7	64.4	61.5	58.0	59.3	45.9	47.8	-	-	35.5	37.0	-	28.9	-	-	-	158
164	66.1	62.8	60.2	63.9	61.1	58.4	57.3	58.6	45.0	47.2	-	-	34.6	36.4	-	28.2	29.5	-	-	164
177	57.1	56.7	54.2	58.2	55.1	52.7	55.6	53.6	50.9	43.4	45.6	-	33.3	34.6	-	27.1	28.2	-	-	177
190	45.0	51.6	49.4	51.6	50.0	47.8	51.6	48.5	46.3	41.9	44.3	44.5	32.0	32.8	-	26.0	27.1	-	-	190
203	-	47.2	45.0	41.9	45.4	43.4	46.3	44.1	41.9	40.1	43.0	41.7	30.6	31.3	32.4	24.9	25.8	26.9	-	203
217	-	-	41.4	30.9	41.7	39.7	38.1	40.1	38.1	38.4	39.9	37.9	29.3	30.2	31.1	24.0	24.7	25.8	-	217
230	-	-	-	-	-	36.4	29.5	36.8	35.1	35.5	36.6	34.6	28.2	29.1	29.8	23.1	23.8	24.7	-	230
243	-	-	-	-	-	-	34.0	32.2	28.9	33.5	31.7	27.1	27.1	28.0	28.7	22.0	22.9	23.8	-	243
256	-	-	-	-	-	-	-	-	-	30.9	29.1	26.2	26.2	27.1	27.6	21.2	21.8	22.7	-	256
269	-	-	-	-	-	-	-	-	-	-	26.7	20.9	20.9	26.5	26.5	20.5	21.2	21.8	-	269
282	-	-	-	-	-	-	-	-	-	-	-	-	-	24.9	24.3	19.6	20.5	21.2	-	282
295	-	-	-	-	-	-	-	-	-	-	-	-	-	-	-	-	20.1	20.5	-	295
308	-	-	-	-	-	-	-	-	-	-	-	-	-	-	-	-	-	-	19.6	308
322	-	-	-	-	-	-	-	-	-	-	-	-	-	-	-	-	-	-	-	322

Remarks

Counterweight 132,300 lb 176,400 lb 220,500 lb 264,600 lb 308,600 lb 352,700 lb 396,800 lb

Max. capacities with minimum counterweight

Further counterweight configurations on request

STERLING CRANE

LIFTING CAPACITIES LUFFING FLY JIB, MAIN BOOM 83° TO 65°

360° 85 %

63.3 ft + 13.1 ft Main boom + adapter

		Fly jib																			
		78.7 ft			98.4 ft			118.1 ft			137.8 ft			157.5 ft			177.2 ft				
Radius		83°	73°	65°	83°	73°	65°	83°	73°	65°	83°	73°	65°	83°	73°	65°	83°	73°	65°	Radius	
ft		1,000 lb																		ft	
46	244.7	-	-	213.4	-	-	-	-	-	-	-	-	-	-	-	-	-	-	-	46	
53	229.3	-	-	203.9	-	-	172.6	-	-	-	-	-	-	-	-	-	-	-	-	53	
59	211.6	-	-	194.4	-	-	171.3	-	-	139.6	-	-	-	-	-	-	-	-	-	59	
66	189.8	-	-	185.0	-	-	170.0	-	-	139.6	-	-	114.6	-	-	-	114.6	-	-	66	
72	172.0	163.4	-	170.9	-	-	167.3	-	-	139.6	-	-	114.6	-	-	-	114.6	-	-	72	
79	157.2	149.0	-	156.1	147.7	-	154.3	-	-	139.6	-	-	114.6	-	-	-	114.6	-	-	79	
85	143.1	136.9	-	143.3	135.8	-	141.8	133.8	-	134.9	-	-	114.6	-	-	-	114.6	-	-	85	
92	-	126.5	121.3	132.5	125.4	-	130.7	123.5	-	129.2	-	-	112.4	-	-	-	112.4	-	-	92	
98	-	117.7	112.7	123.0	116.4	111.3	121.3	114.4	-	119.7	112.7	-	-	108.9	-	-	108.9	-	-	98	
105	-	-	105.2	100.5	108.5	103.8	113.1	106.7	-	111.3	104.7	-	-	105.6	106.0	-	105.6	106.0	-	105	
112	-	-	-	-	101.6	97.0	105.8	99.6	95.0	104.1	97.9	-	-	102.3	99.0	-	102.3	99.0	-	112	
118	-	-	-	-	95.5	91.3	92.2	93.5	89.1	97.7	91.7	-	-	97.7	92.8	-	97.7	92.8	-	118	
125	-	-	-	-	-	86.0	71.2	88.0	83.8	91.7	86.2	81.8	-	93.0	87.3	-	93.0	87.3	-	125	
131	-	-	-	-	-	-	-	83.1	79.1	86.0	81.1	77.2	-	87.7	82.5	-	87.7	82.5	-	131	
138	-	-	-	-	-	-	-	78.7	74.7	73.2	76.7	72.8	-	82.9	77.8	73.9	82.9	77.8	73.9	138	
144	-	-	-	-	-	-	-	-	71.0	57.1	72.5	69.0	-	78.0	73.6	69.9	78.0	73.6	69.9	144	
151	-	-	-	-	-	-	-	-	-	-	69.0	65.3	-	71.7	69.9	66.4	71.7	69.9	66.4	151	
158	-	-	-	-	-	-	-	-	-	-	65.3	61.9	-	61.5	62.8	59.5	61.5	62.8	59.5	158	
164	-	-	-	-	-	-	-	-	-	-	-	-	-	58.6	62.8	59.5	62.8	59.5	58.6	164	
177	-	-	-	-	-	-	-	-	-	-	-	-	-	-	54.0	50.0	50.0	54.0	50.0	177	
190	-	-	-	-	-	-	-	-	-	-	-	-	-	-	-	-	-	-	50.5	47.8	190
203	-	-	-	-	-	-	-	-	-	-	-	-	-	-	-	-	-	-	-	43.7	203
217	-	-	-	-	-	-	-	-	-	-	-	-	-	-	-	-	-	-	-	-	217

		196.9 ft			216.5 ft			236.2 ft			255.9 ft			275.6 ft			295.3 ft			
ft		1,000 lb																		ft
72	86.6	-	-	-	-	-	-	-	-	-	-	-	-	-	-	-	-	-	-	72
79	86.4	-	-	69.0	-	-	-	-	-	-	-	-	-	-	-	-	-	-	-	79
85	86.2	-	-	68.6	-	-	60.8	-	-	-	-	-	-	-	-	-	-	-	-	85
92	85.8	-	-	68.1	-	-	60.6	-	-	47.8	-	-	-	-	-	-	-	-	-	92
98	85.5	-	-	67.7	-	-	60.4	-	-	47.8	-	-	39.0	-	-	-	-	-	-	98
105	85.1	-	-	67.0	-	-	60.2	-	-	47.6	-	-	38.6	-	-	-	31.7	-	-	105
112	84.7	-	-	66.6	-	-	60.0	-	-	47.4	-	-	38.1	-	-	-	31.3	-	-	112
118	84.0	-	-	66.1	-	-	59.5	-	-	47.4	-	-	37.7	-	-	-	30.9	-	-	118
125	83.3	80.0	-	65.9	-	-	59.3	-	-	47.2	-	-	37.0	-	-	-	30.4	-	-	125
131	82.7	80.0	-	65.5	65.5	-	58.9	-	-	46.7	-	-	36.6	-	-	-	29.8	-	-	131
138	80.9	75.4	-	65.0	64.8	-	58.4	60.2	-	46.5	-	-	36.2	-	-	-	29.3	-	-	138
144	76.5	71.4	-	64.6	64.2	-	57.8	59.5	-	45.9	-	-	35.5	-	-	-	28.9	-	-	144
151	72.5	67.7	-	64.2	63.7	-	57.3	59.1	-	45.4	47.0	-	35.1	-	-	-	28.4	-	-	151
158	68.8	64.2	60.6	63.3	62.4	-	56.9	58.6	-	44.8	46.3	-	34.4	35.7	-	-	27.8	-	-	158
164	65.3	60.8	57.5	62.4	59.1	-	56.4	57.3	-	44.3	45.9	-	33.7	35.1	-	-	27.3	28.4	-	164
177	58.9	54.9	52.0	57.5	53.6	50.3	55.3	51.8	-	43.2	45.0	-	32.6	34.0	-	-	26.5	27.3	-	177
190	48.9	49.8	47.2	52.0	48.3	45.6	50.7	47.0	43.9	41.7	44.1	43.2	31.5	32.8	-	-	25.6	26.5	-	190
203	-	45.6	43.0	45.2	44.1	41.4	46.1	42.5	39.7	40.1	42.3	39.5	30.4	31.5	32.8	-	24.5	25.4	-	203
217	-	-	39.5	34.4	40.3	37.7	41.0	38.8	36.2	38.4	38.6	35.7	29.3	30.4	31.5	23.6	24.3	25.4	-	217
230	-	-	-	-	37.0	34.6	32.4	35.5	33.1	36.4	35.3	32.6	28.2	29.3	30.2	22.7	23.6	24.3	-	230
243	-	-	-	-	-	32.0	-	32.6	30.2	31.5	32.2	29.8	27.1	28.2	29.1	21.8	22.7	23.4	-	243
256	-	-	-	-	-	-	-	27.6	23.4	29.8	27.1	26.5	27.3	26.9	20.9	22.0	22.5	-	-	256
269	-	-	-	-	-	-	-	-	-	27.3	24.9	23.4	26.5	24.5	20.3	21.2	21.8	-	-	269
282	-	-	-	-	-	-	-	-	-	-	22.7	-	24.7	22.5	19.6	20.7	21.2	-	-	282
295	-	-	-	-	-	-	-	-	-	-	-	-	-	20.5	15.9	20.3	19.6	-	-	295
308	-	-	-	-	-	-	-	-	-	-	-	-	-	-	-	19.8	18.1	-	-	308
322	-	-	-	-	-	-	-	-	-	-	-	-	-	-	-	-	-	-	-	322

Remarks

Counterweight 132,300 lb 176,400 lb 220,500 lb 264,600 lb 308,600 lb 352,700 lb 396,800 lb

Max. capacities with minimum counterweight

Further counterweight configurations on request

STERLING CRANE

LIFTING CAPACITIES LUFFING FLY JIB, MAIN BOOM 83° TO 65°

360° 85 %

78.7 ft + 13.1 ft Main boom + adapter

		Fly jib																		
		78.7 ft			98.4 ft			118.1 ft			137.8 ft			157.5 ft			177.2 ft			
Radius		83°	73°	65°	83°	73°	65°	83°	73°	65°	83°	73°	65°	83°	73°	65°	83°	73°	65°	Radius
ft		1,000 lb																		ft
53	217.8	-	-	192.2	-	-	159.8	-	-	-	-	-	-	-	-	-	-	-	-	53
59	203.7	-	-	183.4	-	-	158.3	-	-	130.7	-	-	-	-	-	-	-	-	-	59
66	188.3	-	-	174.6	-	-	156.7	-	-	130.7	-	-	109.8	-	-	-	-	-	-	66
72	170.4	-	-	166.0	-	-	155.2	-	-	130.7	-	-	109.8	-	-	96.8	-	-	-	72
79	155.6	145.9	-	154.5	-	-	150.1	-	-	130.7	-	-	109.8	-	-	96.3	-	-	-	79
85	143.1	134.0	-	142.0	132.9	-	140.2	-	-	129.4	-	-	109.8	-	-	95.7	-	-	-	85
92	-	123.9	-	131.2	122.6	-	129.4	120.8	-	125.2	-	-	109.6	-	-	95.2	-	-	-	92
98	-	115.1	109.1	121.9	113.8	-	120.2	112.0	-	118.4	-	-	107.1	-	-	94.6	-	-	-	98
105	-	-	101.6	113.1	106.0	100.3	112.0	104.1	-	110.2	102.3	-	104.5	-	-	94.1	-	-	-	105
112	-	-	95.2	-	99.2	93.9	104.7	97.4	-	103.0	95.5	-	102.1	96.8	-	93.7	-	-	-	112
118	-	-	-	-	93.3	88.0	104.7	91.3	86.0	96.6	89.5	-	97.9	90.6	-	93.0	87.7	-	-	118
125	-	-	-	-	-	82.9	80.2	85.8	80.9	90.8	84.0	-	92.2	85.3	-	90.6	83.6	-	-	125
131	-	-	-	-	-	78.3	-	80.9	76.3	85.5	79.1	74.3	86.9	80.2	-	85.3	78.7	-	-	131
138	-	-	-	-	-	-	-	76.7	72.1	78.9	74.7	70.1	82.2	75.8	-	80.7	74.3	-	-	138
144	-	-	-	-	-	-	-	-	68.3	64.4	70.8	66.4	77.8	71.9	67.5	76.3	70.1	-	-	144
151	-	-	-	-	-	-	-	64.6	-	67.0	62.8	58.4	73.6	68.1	63.9	72.3	66.6	62.2	-	151
158	-	-	-	-	-	-	-	-	-	63.5	59.5	55.1	66.1	64.6	60.6	68.6	63.3	58.9	-	158
164	-	-	-	-	-	-	-	-	-	-	56.4	52.0	65.4	61.3	57.3	65.0	60.0	56.0	-	164
177	-	-	-	-	-	-	-	-	-	-	-	47.2	55.3	51.8	54.0	60.0	54.0	50.5	-	177
190	-	-	-	-	-	-	-	-	-	-	-	-	-	-	47.2	49.2	45.9	-	-	190
203	-	-	-	-	-	-	-	-	-	-	-	-	-	-	-	-	41.9	-	-	203

		196.9 ft			216.5 ft			236.2 ft			255.9 ft			275.6 ft			295.3 ft			
ft		1,000 lb																		ft
79	82.0	-	-	-	-	-	-	-	-	-	-	-	-	-	-	-	-	-	-	79
85	81.4	-	-	63.9	-	-	57.3	-	-	-	-	-	-	-	-	-	-	-	-	85
92	80.9	-	-	63.5	-	-	56.9	-	-	46.3	-	-	-	-	-	-	-	-	-	92
98	80.5	-	-	63.3	-	-	56.7	-	-	46.3	-	-	36.6	-	-	-	-	-	-	98
105	80.0	-	-	62.8	-	-	56.4	-	-	46.1	-	-	36.2	-	-	31.1	-	-	-	105
112	79.6	-	-	62.4	-	-	56.2	-	-	45.9	-	-	35.9	-	-	30.6	-	-	-	112
118	79.1	-	-	61.9	-	-	56.0	-	-	45.6	-	-	35.7	-	-	30.2	-	-	-	118
125	78.7	-	-	61.5	-	-	55.8	-	-	45.4	-	-	35.5	-	-	29.8	-	-	-	125
131	78.3	75.8	-	61.3	-	-	55.3	-	-	45.2	-	-	35.3	-	-	29.3	-	-	-	131
138	77.8	73.4	-	60.8	61.5	-	55.1	-	-	45.2	-	-	35.1	-	-	28.9	-	-	-	138
144	75.6	69.4	-	60.4	60.8	-	54.9	52.9	-	44.8	-	-	34.6	-	-	28.2	-	-	-	144
151	71.7	65.7	-	60.0	60.4	-	54.5	52.5	-	44.3	-	-	34.2	-	-	27.8	-	-	-	151
158	68.1	62.4	-	59.5	60.0	-	54.2	52.2	-	43.9	44.1	-	33.7	-	-	27.3	-	-	-	158
164	64.6	59.3	55.1	59.1	57.5	-	54.0	51.8	-	43.4	43.9	-	33.1	34.4	-	26.9	-	-	-	164
177	58.2	53.6	49.8	56.9	52.0	48.1	53.4	50.0	-	42.8	43.2	-	32.2	33.5	-	26.0	-	-	-	177
190	52.9	48.5	45.2	51.6	47.0	43.4	50.0	45.4	41.7	41.7	42.8	-	31.1	32.6	-	24.9	26.2	-	-	190
203	38.4	44.3	41.2	47.0	42.8	39.5	45.6	41.2	37.7	40.1	41.0	37.3	30.2	31.5	-	24.0	25.1	-	-	203
217	-	40.8	37.7	37.3	39.0	35.9	41.7	37.5	34.2	38.6	37.3	33.7	29.1	30.6	31.7	23.1	24.3	-	-	217
230	-	-	34.8	-	35.9	33.1	35.9	34.4	31.1	37.0	34.0	30.9	28.2	29.5	30.4	22.5	23.4	24.5	-	230
243	-	-	-	-	30.2	-	-	31.5	28.4	33.7	31.1	28.0	27.1	28.7	27.6	21.8	22.7	23.6	-	243
256	-	-	-	-	-	-	-	28.9	25.8	25.8	28.4	25.4	26.5	27.6	25.1	20.9	22.0	22.7	-	256
269	-	-	-	-	-	-	-	-	23.8	-	26.0	23.1	25.4	25.8	22.9	20.3	21.4	22.0	-	269
282	-	-	-	-	-	-	-	-	-	-	21.2	-	-	23.6	20.7	19.8	20.7	19.8	-	282
295	-	-	-	-	-	-	-	-	-	-	-	-	-	21.8	19.0	17.6	20.3	18.1	-	295
308	-	-	-	-	-	-	-	-	-	-	-	-	-	-	17.4	-	19.2	16.5	-	308
322	-	-	-	-	-	-	-	-	-	-	-	-	-	-	-	-	-	15.0	-	322
335	-	-	-	-	-	-	-	-	-	-	-	-	-	-	-	-	-	-	-	335

Remarks

Counterweight 132,300 lb 176,400 lb 220,500 lb 264,600 lb 308,600 lb 352,700 lb 396,800 lb

Max. capacities with minimum counterweight

Further counterweight configurations on request

STERLING CRANE

LIFTING CAPACITIES LUFFING FLY JIB, MAIN BOOM 83° TO 65°

360° 85 %

93.8 ft + 13.1 ft Main boom + adapter

		Fly jib																		
		78.7 ft			98.4 ft			118.1 ft			137.8 ft			157.5 ft			177.2 ft			
Radius		83°	73°	65°	83°	73°	65°	83°	73°	65°	83°	73°	65°	83°	73°	65°	83°	73°	65°	Radius
ft		1,000 lb																		ft
53		188.7	-	-	166.0	-	-	-	-	-	-	-	-	-	-	-	-	-	-	53
59		178.1	-	-	160.1	-	-	139.3	-	-	-	-	-	-	-	-	-	-	-	59
66		168.4	-	-	154.1	-	-	137.1	-	-	115.5	-	-	98.3	-	-	-	-	-	66
72		159.0	-	-	147.7	-	-	134.7	-	-	114.9	-	-	98.1	-	-	-	-	86.6	72
79		151.2	-	-	141.3	-	-	131.8	-	-	114.2	-	-	97.9	-	-	-	-	86.0	79
85		142.0	124.3	-	134.9	-	-	127.0	-	-	113.3	-	-	97.7	-	-	-	-	85.5	85
92		-	116.0	-	130.1	114.0	-	122.4	-	-	110.2	-	-	97.4	-	-	-	-	84.9	92
98		-	109.3	-	121.0	106.9	-	117.7	101.9	-	106.9	-	-	96.3	-	-	-	-	84.2	98
105		-	105.2	95.5	112.9	101.4	-	111.1	96.6	-	103.8	93.7	-	94.8	-	-	-	-	83.8	105
112		-	-	89.7	-	95.9	88.6	103.8	91.5	-	100.5	89.3	-	93.0	-	-	-	-	83.1	112
118		-	-	85.5	-	91.5	83.8	97.4	87.5	-	95.7	84.9	-	91.5	84.7	-	-	-	82.7	118
125		-	-	-	-	86.2	78.9	87.7	83.8	75.4	89.9	80.5	-	89.7	81.1	-	-	-	82.0	125
131		-	-	-	-	-	75.6	-	79.4	71.9	84.9	77.2	-	86.2	77.4	-	-	-	81.4	131
138		-	-	-	-	-	-	-	75.2	68.3	80.2	73.2	67.0	81.4	73.9	-	-	-	79.8	138
144		-	-	-	-	-	-	-	71.2	65.7	70.1	69.2	63.9	77.2	70.3	-	-	-	75.6	144
151		-	-	-	-	-	-	-	-	62.8	-	65.7	60.6	73.0	66.8	61.9	-	-	71.7	151
158		-	-	-	-	-	-	-	-	59.5	-	62.2	57.8	69.2	63.3	58.9	-	-	67.9	158
164		-	-	-	-	-	-	-	-	-	-	59.1	54.7	59.3	60.0	55.8	-	-	64.4	164
177		-	-	-	-	-	-	-	-	-	-	-	49.4	-	54.2	50.3	-	-	58.2	177
190		-	-	-	-	-	-	-	-	-	-	-	-	-	-	45.6	-	-	-	190
203		-	-	-	-	-	-	-	-	-	-	-	-	-	-	-	-	-	48.1	203
217		-	-	-	-	-	-	-	-	-	-	-	-	-	-	-	-	-	43.9	217
230		-	-	-	-	-	-	-	-	-	-	-	-	-	-	-	-	-	40.3	230
		-	-	-	-	-	-	-	-	-	-	-	-	-	-	-	-	-	37.0	230

		196.9 ft			216.5 ft			236.2 ft			255.9 ft			275.6 ft			295.3 ft			
ft		1,000 lb																		ft
79		75.4	-	-	-	-	-	-	-	-	-	-	-	-	-	-	-	-	-	79
85		74.7	-	-	58.6	-	-	-	-	-	-	-	-	-	-	-	-	-	-	85
92		74.3	-	-	58.4	-	-	51.6	-	-	-	-	-	-	-	-	-	-	-	92
98		73.9	-	-	58.2	-	-	51.4	-	-	41.7	-	-	-	-	-	-	-	-	98
105		73.2	-	-	58.0	-	-	51.1	-	-	41.7	-	-	34.2	-	-	-	-	28.0	105
112		72.8	-	-	57.8	-	-	50.9	-	-	41.4	-	-	34.0	-	-	-	-	27.8	112
118		72.1	-	-	57.5	-	-	50.7	-	-	41.4	-	-	33.7	-	-	-	-	27.6	118
125		71.7	-	-	57.1	-	-	50.5	-	-	41.4	-	-	33.3	-	-	-	-	27.3	125
131		71.0	-	-	56.9	-	-	50.0	-	-	41.2	-	-	33.1	-	-	-	-	27.1	131
138		70.5	66.6	-	56.7	-	-	49.8	-	-	41.2	-	-	32.8	-	-	-	-	26.9	138
144		69.9	64.4	-	56.4	54.0	-	49.6	-	-	41.0	-	-	32.6	-	-	-	-	26.7	144
151		69.2	62.4	-	56.2	53.1	-	49.4	49.2	-	40.8	-	-	32.2	-	-	-	-	26.5	151
158		67.5	60.2	-	56.0	52.2	-	49.2	48.3	-	40.6	-	-	32.0	-	-	-	-	26.2	158
164		63.9	58.0	-	55.8	51.1	-	48.9	47.4	-	40.3	40.6	-	31.7	-	-	-	-	25.8	164
177		57.8	52.2	48.1	55.3	49.4	-	48.3	45.4	-	39.7	40.1	-	31.1	32.0	-	-	-	25.1	177
190		52.5	47.4	43.7	50.9	45.9	41.9	48.1	43.7	-	39.2	39.5	-	30.6	31.5	-	-	-	24.5	190
203		41.7	43.2	39.7	46.5	41.7	37.9	45.2	40.1	35.9	38.4	39.0	-	30.0	31.1	-	-	-	23.8	203
217		-	39.7	36.4	40.8	38.1	34.6	41.2	36.6	32.6	37.5	36.2	32.2	29.1	30.4	-	-	-	23.1	217
230		-	-	33.3	-	34.8	31.3	37.7	33.3	29.5	36.6	33.1	29.1	28.0	29.8	28.9	-	-	22.5	230
243		-	-	-	-	32.2	28.7	27.6	30.4	26.9	34.4	30.0	26.5	27.1	28.7	26.0	-	-	21.8	243
256		-	-	-	-	-	26.2	-	28.0	24.5	27.6	27.3	24.0	26.5	27.1	23.6	-	-	21.2	256
269		-	-	-	-	-	-	-	22.3	-	-	25.1	21.8	25.8	24.9	21.4	-	-	20.5	269
282		-	-	-	-	-	-	-	-	-	-	22.9	19.8	19.2	22.7	19.4	-	-	19.8	282
295		-	-	-	-	-	-	-	-	-	-	-	18.1	-	20.7	17.6	-	-	19.2	295
308		-	-	-	-	-	-	-	-	-	-	-	-	-	-	16.1	-	-	18.3	308
322		-	-	-	-	-	-	-	-	-	-	-	-	-	-	-	-	-	16.8	322
335		-	-	-	-	-	-	-	-	-	-	-	-	-	-	-	-	-	12.6	335

Remarks

Counterweight 132,300 lb 176,400 lb 220,500 lb 264,600 lb 308,600 lb 352,700 lb 396,800 lb

Max. capacities with minimum counterweight

Further counterweight configurations on request

STERLING CRANE

LIFTING CAPACITIES LUFFING FLY JIB, MAIN BOOM 83° TO 65°

360° 85 %

108.9 ft + 13.1 ft Main boom + adapter

		Fly jib																		
		78.7 ft			98.4 ft			118.1 ft			137.8 ft			157.5 ft			177.2 ft			
Radius		83°	73°	65°	83°	73°	65°	83°	73°	65°	83°	73°	65°	83°	73°	65°	83°	73°	65°	Radius
ft		1,000 lb																		ft
59		160.5	-	-	144.2	-	-	128.8	-	-	-	-	-	-	-	-	-	-	-	59
66		151.2	-	-	138.2	-	-	124.8	-	-	105.4	-	-	-	-	-	-	-	-	66
72		141.8	-	-	132.3	-	-	121.0	-	-	103.8	-	-	90.2	-	-	-	-	-	72
79		134.5	-	-	126.3	-	-	117.1	-	-	102.3	-	-	89.5	-	-	76.9	-	-	79
85		129.2	-	-	120.6	-	-	112.7	-	-	100.8	-	-	88.8	-	-	76.1	-	-	85
92		125.0	103.8	-	115.7	100.1	-	108.0	-	-	98.5	-	-	88.2	-	-	75.4	-	-	92
98		-	97.4	-	111.8	94.6	-	103.6	-	-	95.5	-	-	87.3	-	-	74.7	-	-	98
105		-	92.6	-	108.9	89.3	-	100.3	85.1	-	92.2	-	-	85.8	-	-	73.9	-	-	105
112		-	87.7	-	100.8	84.2	-	97.2	81.1	-	89.1	77.2	-	84.2	-	-	73.0	-	-	112
118		-	-	74.1	-	80.5	-	94.6	77.2	-	86.4	73.9	-	82.7	-	-	71.9	-	-	118
125		-	-	69.9	-	76.7	68.8	91.1	73.4	-	84.0	70.3	-	81.1	70.5	-	70.8	-	-	125
131		-	-	-	-	75.0	65.5	71.2	70.5	62.6	81.6	67.2	-	79.4	67.7	-	69.9	64.6	-	131
138		-	-	-	-	-	61.9	-	67.9	59.7	79.4	63.9	-	77.6	64.6	-	68.8	62.2	-	138
144		-	-	-	-	-	60.0	-	66.6	57.1	75.4	61.7	55.3	75.6	61.9	-	67.7	59.7	-	144
151		-	-	-	-	-	-	-	65.0	54.7	57.5	59.3	52.7	72.5	59.3	-	66.6	57.1	-	151
158		-	-	-	-	-	-	-	-	52.9	-	57.8	50.5	68.8	57.3	50.5	65.3	54.9	-	158
164		-	-	-	-	-	-	-	-	51.1	-	56.2	48.3	63.5	55.6	48.3	63.9	52.5	-	164
177		-	-	-	-	-	-	-	-	-	-	-	44.8	-	52.0	44.5	57.8	49.4	42.8	177
190		-	-	-	-	-	-	-	-	-	-	-	-	-	48.5	41.2	40.3	46.1	39.5	190
203		-	-	-	-	-	-	-	-	-	-	-	-	-	-	39.7	-	43.0	36.6	203
217		-	-	-	-	-	-	-	-	-	-	-	-	-	-	-	-	-	34.8	217

		196.9 ft			216.5 ft			236.2 ft			255.9 ft			275.6 ft			295.3 ft			
ft		1,000 lb																		ft
85		68.3	-	-	-	-	-	-	-	-	-	-	-	-	-	-	-	-	-	85
92		67.7	-	-	53.8	-	-	45.6	-	-	-	-	-	-	-	-	-	-	-	92
98		67.0	-	-	53.6	-	-	45.4	-	-	38.4	-	-	-	-	-	-	-	-	98
105		66.4	-	-	53.4	-	-	45.2	-	-	38.1	-	-	31.1	-	-	-	-	-	105
112		65.7	-	-	53.1	-	-	45.0	-	-	38.1	-	-	30.9	-	-	24.7	-	-	112
118		65.0	-	-	52.9	-	-	45.0	-	-	37.9	-	-	30.9	-	-	24.5	-	-	118
125		64.4	-	-	52.7	-	-	44.8	-	-	37.9	-	-	30.6	-	-	24.5	-	-	125
131		63.9	-	-	52.2	-	-	44.5	-	-	37.7	-	-	30.6	-	-	24.3	-	-	131
138		63.3	-	-	51.8	-	-	44.3	-	-	37.5	-	-	30.4	-	-	24.0	-	-	138
144		62.6	57.5	-	51.6	-	-	44.3	-	-	37.5	-	-	30.4	-	-	24.0	-	-	144
151		61.9	55.6	-	51.1	47.8	-	44.1	-	-	37.3	-	-	30.2	-	-	23.8	-	-	151
158		61.1	53.4	-	50.7	46.7	-	44.1	42.5	-	37.3	-	-	30.0	-	-	23.6	-	-	158
164		60.0	51.4	-	50.3	45.4	-	43.9	41.4	-	37.3	-	-	30.0	-	-	23.6	-	-	164
177		57.3	47.4	-	49.6	43.0	-	43.7	39.5	-	37.0	34.6	-	29.8	29.5	-	23.1	-	-	177
190		52.0	44.5	38.8	48.7	40.6	36.8	43.2	37.5	-	36.8	33.7	-	29.5	29.3	-	22.9	23.4	-	190
203		44.8	41.9	35.7	46.1	38.1	33.7	42.5	35.5	32.2	36.4	32.8	-	29.3	29.3	-	22.7	23.1	-	203
217		-	38.8	33.3	42.1	35.9	31.1	40.8	33.5	29.5	35.9	31.7	28.7	28.7	29.1	-	22.5	22.9	-	217
230		-	35.9	31.5	27.8	34.2	28.9	37.3	31.5	27.1	35.5	30.2	26.2	28.0	28.9	25.8	21.8	22.7	-	230
243		-	-	29.5	-	31.3	27.1	30.0	29.5	25.1	34.2	28.4	24.0	27.3	27.3	23.8	21.4	22.3	22.7	243
256		-	-	-	-	-	25.1	-	27.1	23.1	29.3	26.7	22.5	26.7	25.8	21.8	20.9	21.8	20.9	256
269		-	-	-	-	-	-	24.9	21.2	18.1	24.3	20.7	17.0	26.0	24.0	20.3	20.3	21.2	19.4	269
282		-	-	-	-	-	-	-	19.4	-	22.3	18.7	-	20.9	21.8	18.3	19.8	20.7	17.4	282
295		-	-	-	-	-	-	-	-	-	-	17.0	-	-	20.1	16.8	19.4	19.2	15.7	295
308		-	-	-	-	-	-	-	-	-	-	-	-	-	18.5	15.2	-	17.4	14.1	308
322		-	-	-	-	-	-	-	-	-	-	-	-	-	-	13.7	-	16.1	12.8	322
335		-	-	-	-	-	-	-	-	-	-	-	-	-	-	-	-	-	11.5	335
348		-	-	-	-	-	-	-	-	-	-	-	-	-	-	-	-	-	-	348

Remarks

Counterweight 132,300 lb 176,400 lb 220,500 lb 264,600 lb 308,600 lb 352,700 lb 396,800 lb

Max. capacities with minimum counterweight

Further counterweight configurations on request

STERLING CRANE

LIFTING CAPACITIES LUFFING FLY JIB WITH SSL, MAIN BOOM 83°-65°

360° 85 %

108.9 ft + 13.1 ft Main boom + adapter

		Fly jib															
		98.4 ft			118.1 ft			137.8 ft			157.5 ft			177.2 ft			
Radius		83°	73°	65°	83°	73°	65°	83°	73°	65°	83°	73°	65°	83°	73°	65°	Radius
ft		1,000 lb															ft
53	198.4	-	-	-	-	-	-	-	-	-	-	-	-	-	-	-	53
59	195.6	-	-	-	170.0	-	-	-	-	-	-	-	-	-	-	-	59
66	181.9	-	-	-	179.2	-	-	143.5	-	-	-	-	-	-	-	-	66
72	164.5	-	-	-	162.7	-	-	161.2	-	-	136.2	-	-	-	-	-	72
79	150.1	-	-	-	148.4	-	-	146.6	-	-	131.2	-	-	-	-	118.2	79
85	137.8	-	-	-	136.0	-	-	134.5	-	-	126.1	-	-	-	-	116.4	85
92	127.2	113.8	-	-	125.4	-	-	123.9	-	-	121.0	-	-	-	-	114.6	92
98	118.2	105.6	-	-	116.4	-	-	114.6	-	-	116.0	-	-	-	-	112.7	98
105	110.2	98.3	-	-	108.5	96.3	-	106.7	-	-	108.2	-	-	-	-	106.5	105
112	99.4	91.9	-	-	101.4	89.9	-	99.6	88.0	-	101.2	-	-	-	-	99.4	112
118	-	86.2	78.0	-	95.0	84.2	-	93.3	82.2	-	94.8	-	-	-	-	93.3	118
125	-	81.1	73.4	-	89.5	79.1	-	87.7	77.2	-	89.1	78.5	-	-	-	87.5	125
131	-	76.7	69.2	-	70.1	74.5	67.0	82.7	72.8	-	84.0	73.9	-	-	-	82.5	131
138	-	-	65.5	-	-	70.3	63.3	78.0	68.6	-	79.4	69.7	-	-	-	77.8	138
144	-	-	61.9	-	-	66.8	59.7	74.1	64.8	57.8	75.2	65.9	-	-	-	73.6	144
151	-	-	-	-	-	63.5	56.7	56.4	61.3	54.7	71.4	62.6	-	-	-	69.9	151
158	-	-	-	-	-	-	53.8	-	58.2	51.8	67.9	59.5	52.9	-	-	66.4	158
164	-	-	-	-	-	-	51.4	-	55.3	49.2	62.8	56.4	50.3	-	-	63.3	164
177	-	-	-	-	-	-	-	-	-	44.5	-	51.4	45.6	-	-	57.5	177
190	-	-	-	-	-	-	-	-	-	-	-	47.2	41.7	-	-	39.7	190
203	-	-	-	-	-	-	-	-	-	-	-	-	38.1	-	-	41.7	203
217	-	-	-	-	-	-	-	-	-	-	-	-	-	-	-	33.3	217
230	-	-	-	-	-	-	-	-	-	-	-	-	-	-	-	-	230

		196.9 ft		216.5 ft		236.2 ft		255.9 ft		275.6 ft		295.3 ft		
		1,000 lb												
ft														ft
85	91.1	-	-	68.8	-	-	-	-	-	-	-	-	-	85
92	89.1	-	-	73.9	-	-	56.7	-	-	-	-	-	-	92
98	87.3	-	-	71.9	-	-	61.3	-	-	48.7	-	-	-	98
105	85.5	-	-	69.9	-	-	60.4	-	-	48.1	-	39.2	-	105
112	83.6	-	-	68.1	-	-	59.7	-	-	47.4	-	38.6	-	112
118	81.8	-	-	66.1	-	-	58.9	-	-	46.5	-	38.1	-	118
125	79.8	-	-	64.2	-	-	58.2	-	-	45.9	-	37.5	-	125
131	78.0	-	-	62.6	-	-	57.3	-	-	45.2	-	37.0	-	131
138	76.3	67.2	-	61.3	-	-	56.4	-	-	44.5	-	36.4	-	138
144	73.0	63.5	-	60.0	-	-	55.3	-	-	43.9	-	35.9	-	144
151	69.2	60.0	-	58.6	56.2	-	54.5	-	-	43.0	-	35.3	-	151
158	65.7	56.9	-	57.1	55.1	-	53.4	45.0	-	42.1	-	34.6	-	158
164	62.4	54.0	-	55.8	52.2	-	52.2	44.5	-	41.0	35.9	33.7	-	164
177	56.7	48.9	43.0	54.0	47.0	-	50.0	43.7	-	39.2	35.5	32.0	31.7	177
190	51.8	44.5	38.8	50.0	42.5	37.0	48.3	40.8	-	37.7	34.8	30.6	30.6	190
203	44.1	40.8	35.5	45.9	38.8	33.5	44.1	36.8	31.5	37.0	34.4	29.3	29.5	203
217	-	37.5	32.4	41.9	35.5	30.4	40.3	33.5	28.4	36.4	33.3	28.0	28.4	217
230	-	34.6	29.8	27.1	32.6	27.8	37.0	30.6	25.8	35.7	30.2	25.4	27.6	230
243	-	-	27.6	-	30.0	25.4	29.1	28.0	23.4	33.7	27.6	22.9	26.7	243
256	-	-	-	-	-	23.4	-	25.8	21.4	29.3	25.1	20.7	26.0	256
269	-	-	-	-	-	-	-	23.8	19.4	-	23.1	19.0	25.6	269
282	-	-	-	-	-	-	-	-	17.6	-	21.2	17.2	20.9	282
295	-	-	-	-	-	-	-	-	-	-	-	15.7	19.2	295
308	-	-	-	-	-	-	-	-	-	-	-	-	13.7	308
322	-	-	-	-	-	-	-	-	-	-	-	-	12.3	322
335	-	-	-	-	-	-	-	-	-	-	-	-	-	335
348	-	-	-	-	-	-	-	-	-	-	-	-	-	348

Remarks

Counterweight 176,400 lb 220,500 lb 264,600 lb 308,600 lb 352,700 lb 396,800 lb

Max. capacities with minimum counterweight

Further counterweight configurations on request

STERLING CRANE

LIFTING CAPACITIES LUFFING FLY JIB, MAIN BOOM 83° TO 65°

360° 85 %

124.3 ft + 13.1 ft Main boom + adapter

		Fly jib																		
		78.7 ft			98.4 ft			118.1 ft			137.8 ft			157.5 ft			177.2 ft			
Radius		83°	73°	65°	83°	73°	65°	83°	73°	65°	83°	73°	65°	83°	73°	65°	83°	73°	65°	Radius
ft		1,000 lb																		ft
59	140.7	-	-	125.7	-	-	-	-	-	-	-	-	-	-	-	-	-	-	-	59
66	132.5	-	-	120.6	-	-	107.1	-	-	-	-	-	-	-	-	-	-	-	-	66
72	125.0	-	-	115.3	-	-	103.8	-	-	89.9	-	-	-	77.6	-	-	-	-	-	72
79	117.7	-	-	110.5	-	-	100.5	-	-	88.0	-	-	-	76.3	-	-	-	-	66.6	79
85	112.9	-	-	105.6	-	-	97.0	-	-	85.8	-	-	-	75.0	-	-	-	-	65.9	85
92	108.2	-	-	100.8	-	-	93.5	-	-	83.6	-	-	-	73.6	-	-	-	-	65.3	92
98	-	86.6	-	97.4	84.9	-	89.9	-	-	81.1	-	-	-	72.3	-	-	-	-	64.4	98
105	-	81.6	-	94.6	79.8	-	86.9	-	-	78.5	-	-	-	71.0	-	-	-	-	63.7	105
112	-	76.5	-	91.5	75.0	-	84.0	71.4	-	76.1	-	-	-	69.7	-	-	-	-	62.8	112
118	-	73.4	-	-	71.0	-	81.6	67.7	-	73.9	65.5	-	-	68.1	-	-	-	-	61.7	118
125	-	-	61.7	-	67.2	-	79.1	63.9	-	71.7	62.4	-	-	66.8	-	-	-	-	60.8	125
131	-	-	58.6	-	64.8	57.3	77.4	61.3	-	69.7	59.3	-	-	65.5	60.0	-	-	-	59.7	131
138	-	-	-	-	62.2	54.0	-	58.4	-	67.7	56.2	-	-	64.2	57.3	-	-	-	58.6	138
144	-	-	-	-	-	51.6	-	56.2	48.3	66.1	53.8	-	-	63.1	54.7	-	-	-	57.8	144
151	-	-	-	-	-	48.9	-	54.2	45.6	64.8	51.4	44.8	-	61.9	52.0	-	-	-	56.7	151
158	-	-	-	-	-	-	-	53.4	43.7	-	49.2	42.3	-	61.1	50.0	-	-	-	55.6	158
164	-	-	-	-	-	-	-	-	41.9	-	47.2	40.1	-	60.2	48.1	41.9	-	-	54.7	164
177	-	-	-	-	-	-	-	-	-	-	45.4	36.8	-	-	44.5	37.9	-	-	52.7	177
190	-	-	-	-	-	-	-	-	-	-	-	34.4	-	-	42.5	35.1	-	-	45.4	190
203	-	-	-	-	-	-	-	-	-	-	-	-	-	-	-	32.6	-	-	37.0	203
217	-	-	-	-	-	-	-	-	-	-	-	-	-	-	-	-	-	-	35.9	217
230	-	-	-	-	-	-	-	-	-	-	-	-	-	-	-	-	-	-	26.9	230
243	-	-	-	-	-	-	-	-	-	-	-	-	-	-	-	-	-	-	-	243

		196.9 ft			216.5 ft			236.2 ft			255.9 ft			275.6 ft			295.3 ft				
ft		1,000 lb																		ft	
85	59.3	-	-	-	-	-	-	-	-	-	-	-	-	-	-	-	-	-	-	85	
92	58.6	-	-	46.1	-	-	-	-	-	-	-	-	-	-	-	-	-	-	-	92	
98	57.8	-	-	45.9	-	-	40.8	-	-	-	-	-	-	-	-	-	-	-	-	98	
105	57.1	-	-	45.6	-	-	40.3	-	-	33.1	-	-	-	-	-	-	-	-	-	105	
112	56.2	-	-	45.2	-	-	40.1	-	-	33.1	-	-	-	26.9	-	-	-	-	21.8	112	
118	55.6	-	-	45.0	-	-	39.9	-	-	33.1	-	-	-	26.9	-	-	-	-	21.8	118	
125	54.7	-	-	44.5	-	-	39.7	-	-	32.8	-	-	-	26.9	-	-	-	-	21.6	125	
131	54.0	-	-	44.3	-	-	39.2	-	-	32.8	-	-	-	26.7	-	-	-	-	21.4	131	
138	53.1	-	-	44.1	-	-	39.0	-	-	32.8	-	-	-	26.7	-	-	-	-	21.4	138	
144	52.5	-	-	43.7	-	-	38.8	-	-	32.6	-	-	-	26.7	-	-	-	-	21.2	144	
151	51.6	47.8	-	43.4	-	-	38.6	-	-	32.6	-	-	-	26.5	-	-	-	-	21.2	151	
158	50.9	46.1	-	43.2	40.8	-	38.1	-	-	32.6	-	-	-	26.5	-	-	-	-	20.9	158	
164	50.0	44.3	-	42.8	39.5	-	37.9	34.8	-	32.4	-	-	-	26.5	-	-	-	-	20.9	164	
177	48.7	40.6	-	42.1	37.3	-	37.5	33.3	-	32.4	30.2	-	-	26.2	-	-	-	-	20.7	177	
190	47.2	37.7	33.5	41.7	35.1	-	36.8	31.7	-	32.2	29.1	-	-	26.0	24.7	-	-	-	20.3	190	
203	46.3	35.1	30.2	41.0	32.6	28.7	36.4	30.4	-	32.0	28.0	-	-	25.8	24.5	-	-	20.1	19.4	203	
217	-	32.6	27.8	40.3	30.4	25.8	35.7	28.4	24.7	32.0	26.9	-	-	25.8	24.3	-	-	19.8	19.2	217	
230	-	31.7	25.6	31.7	28.0	23.6	35.3	26.5	22.3	31.7	25.4	21.8	-	25.6	24.0	-	-	19.6	18.7	230	
243	-	-	24.3	-	27.1	21.6	32.0	24.3	20.1	31.7	23.6	19.6	-	25.4	22.9	19.6	-	-	19.4	18.5	243
256	-	-	-	-	26.2	20.3	-	23.1	18.3	30.9	21.8	17.6	-	25.1	21.4	17.6	-	-	19.2	17.9	256
269	-	-	-	-	-	19.4	-	22.5	17.0	20.9	20.5	16.1	-	25.1	19.8	15.7	-	-	19.0	17.0	269
282	-	-	-	-	-	-	-	-	16.1	-	19.8	14.6	-	22.7	18.3	14.3	-	-	18.7	16.1	282
295	-	-	-	-	-	-	-	-	-	-	19.2	13.9	-	-	17.6	13.0	-	-	18.5	15.2	295
308	-	-	-	-	-	-	-	-	-	-	-	13.0	-	-	17.2	12.1	-	-	14.1	14.8	308
322	-	-	-	-	-	-	-	-	-	-	-	-	-	-	-	11.5	-	-	14.6	9.7	322
335	-	-	-	-	-	-	-	-	-	-	-	-	-	-	-	-	-	-	13.4	9.3	335
348	-	-	-	-	-	-	-	-	-	-	-	-	-	-	-	-	-	-	-	8.8	348

Remarks

Counterweight 132,300 lb 176,400 lb 220,500 lb 264,600 lb 308,600 lb 352,700 lb 396,800 lb

Max. capacities with minimum counterweight

Further counterweight configurations on request

STERLING CRANE

LIFTING CAPACITIES LUFFING FLY JIB WITH SSL, MAIN BOOM 83°-65°

360° 85 %

124.3 ft + 13.1 ft Main boom + adapter

		Fly jib															
		98.4 ft			118.1 ft			137.8 ft			157.5 ft			177.2 ft			
Radius		83°	73°	65°	83°	73°	65°	83°	73°	65°	83°	73°	65°	83°	73°	65°	Radius
ft		1,000 lb															ft
59		181.7	-	-	-	-	-	-	-	-	-	-	-	-	-	-	59
66		170.6	-	-	166.9	-	-	-	-	-	-	-	-	-	-	-	66
72		160.5	-	-	157.2	-	-	150.4	-	-	-	-	-	-	-	-	72
79		148.8	-	-	147.0	-	-	142.4	-	-	130.5	-	-	95.9	-	-	79
85		136.7	-	-	134.9	-	-	133.4	-	-	125.9	-	-	108.2	-	-	85
92		126.1	-	-	124.6	-	-	122.8	-	-	121.3	-	-	106.7	-	-	92
98		117.1	103.4	-	115.3	-	-	113.8	-	-	115.3	-	-	104.9	-	-	98
105		109.1	96.1	-	107.4	-	-	105.8	-	-	107.4	-	-	103.4	-	-	105
112		102.3	89.9	-	100.3	88.0	-	98.8	-	-	100.3	-	-	98.5	-	-	112
118		-	84.2	-	94.1	82.2	-	92.4	80.5	-	93.9	-	-	92.4	-	-	118
125		-	79.4	-	88.6	77.4	-	86.9	75.4	-	88.4	-	-	86.6	-	-	125
131		-	74.7	66.8	79.4	72.8	-	81.8	71.0	-	83.3	72.1	-	81.6	-	-	131
138		-	71.0	63.1	-	68.8	60.8	77.4	66.8	-	78.7	68.1	-	77.2	66.4	-	138
144		-	-	59.7	-	65.0	57.5	73.2	63.1	-	74.5	64.4	-	73.0	62.6	-	144
151		-	-	56.7	-	61.7	54.5	64.4	59.7	52.5	70.8	61.1	-	69.2	59.3	-	151
158		-	-	-	-	58.9	51.8	-	56.7	49.8	67.2	58.0	-	65.7	56.2	-	158
164		-	-	-	-	-	49.2	-	54.0	47.2	64.2	55.1	48.3	62.6	53.4	-	164
177		-	-	-	-	-	-	-	49.2	42.8	-	50.0	43.7	56.9	48.3	41.9	177
190		-	-	-	-	-	-	-	-	38.8	-	45.9	39.9	44.8	44.1	37.9	190
203		-	-	-	-	-	-	-	-	-	-	-	36.6	-	40.3	34.6	203
217		-	-	-	-	-	-	-	-	-	-	-	-	-	37.3	31.7	217
230		-	-	-	-	-	-	-	-	-	-	-	-	-	-	29.1	230
243		-	-	-	-	-	-	-	-	-	-	-	-	-	-	-	243

		196.9 ft		216.5 ft		236.2 ft		255.9 ft		275.6 ft		295.3 ft								
		1,000 lb																		
ft														ft						
85		85.5	-	-	-	-	-	-	-	-	-	-	-	85						
92		84.2	-	-	70.3	-	-	-	-	-	-	-	-	92						
98		82.7	-	-	69.0	-	-	57.5	-	-	-	-	-	98						
105		81.4	-	-	67.5	-	-	57.3	-	-	46.5	-	-	105						
112		79.8	-	-	66.1	-	-	56.9	-	-	45.9	-	37.0	26.9	112					
118		78.5	-	-	64.8	-	-	56.7	-	-	45.4	-	36.6	30.0	118					
125		76.9	-	-	63.3	-	-	56.2	-	-	45.0	-	36.4	29.5	125					
131		75.6	-	-	61.9	-	-	55.8	-	-	44.3	-	35.9	29.3	131					
138		74.1	-	-	60.6	-	-	55.6	-	-	43.9	-	35.5	28.9	138					
144		72.3	61.7	-	59.3	-	-	54.7	-	-	43.2	-	35.1	28.7	144					
151		68.3	58.4	-	58.0	-	-	53.6	-	-	42.5	-	34.8	28.2	151					
158		65.0	55.3	-	56.9	49.8	-	52.7	-	-	41.7	-	34.2	27.8	158					
164		61.7	52.5	-	55.6	49.2	-	51.6	40.1	-	40.8	-	33.5	27.6	164					
177		56.2	47.4	-	53.6	45.6	-	49.6	39.5	-	39.0	33.1	32.0	26.2	177					
190		51.4	43.2	37.0	49.4	41.2	-	47.6	38.8	-	37.3	32.8	30.4	28.2	24.9	22.3	190			
203		47.2	39.5	33.7	45.2	37.5	31.7	43.4	35.7	-	35.9	32.6	28.9	27.6	23.8	21.8	203			
217		-	36.2	30.9	41.4	34.4	28.9	39.7	32.4	26.7	34.8	32.0	27.8	26.9	22.5	21.2	217			
230		-	33.5	28.2	30.9	31.3	26.2	36.4	29.5	24.3	33.7	29.1	23.8	26.7	26.2	21.6	20.7	230		
243		-	-	25.8	-	28.9	23.8	32.0	26.9	21.8	33.1	26.5	21.4	25.8	25.6	20.9	20.7	20.3	17.0	243
256		-	-	-	-	26.7	21.8	-	24.7	19.8	30.6	24.3	19.4	25.1	23.8	19.0	19.8	19.6	16.8	256
269		-	-	-	-	-	20.1	-	22.7	17.9	20.9	22.0	17.4	24.7	21.8	17.0	19.2	19.2	16.1	269
282		-	-	-	-	-	-	-	-	16.3	-	20.3	15.9	22.7	19.8	15.4	18.7	18.5	14.3	282
295		-	-	-	-	-	-	-	-	-	-	18.5	14.3	-	18.3	13.9	18.5	17.2	12.8	295
308		-	-	-	-	-	-	-	-	-	-	12.8	-	16.8	12.3	14.1	15.7	11.5	308	
322		-	-	-	-	-	-	-	-	-	-	-	-	-	11.2	-	14.3	10.1	322	
335		-	-	-	-	-	-	-	-	-	-	-	-	-	-	-	-	-	9.0	335
348		-	-	-	-	-	-	-	-	-	-	-	-	-	-	-	-	-	7.9	348

Remarks

Counterweight 176,400 lb 220,500 lb 264,600 lb 308,600 lb 352,700 lb 396,800 lb

Max. capacities with minimum counterweight

Further counterweight configurations on request

STERLING CRANE

LIFTING CAPACITIES LUFFING FLY JIB, MAIN BOOM 83° TO 65°

360° 85 %

139.4 ft + 13.1 ft Main boom + adapter

		Fly jib																					
		78.7 ft			98.4 ft			118.1 ft			137.8 ft			157.5 ft			177.2 ft						
Radius		83°	73°	65°	83°	73°	65°	83°	73°	65°	83°	73°	65°	83°	73°	65°	83°	73°	65°	Radius			
ft		1,000 lb																		ft			
59		-	-	-	101.2	-	-	-	-	-	-	-	-	-	-	-	-	-	-	-	59		
66	109.1	-	-	-	97.2	-	-	88.0	-	-	-	-	-	-	-	-	-	-	-	-	66		
72	103.2	-	-	-	93.5	-	-	84.7	-	-	73.9	-	-	-	-	-	-	-	-	-	72		
79	97.7	-	-	-	89.5	-	-	81.6	-	-	71.7	-	-	64.2	-	-	-	-	-	-	79		
85	92.8	-	-	-	85.8	-	-	78.3	-	-	69.4	-	-	62.8	-	-	55.6	-	-	-	85		
92	88.8	-	-	-	82.0	-	-	75.8	-	-	67.0	-	-	61.3	-	-	54.2	-	-	-	92		
98	-	-	-	-	78.9	-	-	73.2	-	-	65.0	-	-	60.0	-	-	53.1	-	-	-	98		
105	-	67.5	-	-	76.5	65.7	-	71.0	-	-	63.3	-	-	58.6	-	-	52.0	-	-	-	105		
112	-	63.1	-	-	73.9	61.7	-	68.6	-	-	61.3	-	-	57.3	-	-	50.9	-	-	-	112		
118	-	60.2	-	-	-	58.4	-	66.8	55.6	-	59.7	-	-	56.2	-	-	49.8	-	-	-	118		
125	-	-	-	-	-	54.9	-	64.8	52.7	-	58.0	49.4	-	54.9	-	-	48.7	-	-	-	125		
131	-	-	-	-	-	52.2	-	63.5	50.0	-	56.7	47.0	-	53.8	-	-	47.8	-	-	-	131		
138	-	-	-	-	-	49.8	44.3	-	47.4	45.4	-	55.3	44.5	-	52.7	45.6	-	46.7	-	-	-	138	
144	-	-	-	-	-	-	41.9	-	45.4	45.4	-	54.2	42.3	-	51.8	43.4	-	45.9	41.7	-	-	144	
151	-	-	-	-	-	-	39.7	-	43.7	37.7	37.7	53.4	40.1	-	50.9	41.4	-	45.0	39.7	-	-	151	
158	-	-	-	-	-	-	38.1	-	42.8	35.9	35.9	-	38.6	-	50.0	39.5	-	44.3	37.9	-	-	158	
164	-	-	-	-	-	-	-	-	-	34.2	34.2	-	37.0	32.4	-	49.2	37.7	-	43.7	35.9	-	-	164
177	-	-	-	-	-	-	-	-	-	31.5	31.5	-	34.8	29.3	-	-	35.1	30.6	42.3	32.6	-	-	177
190	-	-	-	-	-	-	-	-	-	-	-	-	-	-	-	-	32.8	27.8	41.7	30.4	26.5	-	190
203	-	-	-	-	-	-	-	-	-	-	-	-	-	-	-	-	-	25.8	-	28.0	23.8	-	203
217	-	-	-	-	-	-	-	-	-	-	-	-	-	-	-	-	-	24.3	-	27.3	21.8	-	217
230	-	-	-	-	-	-	-	-	-	-	-	-	-	-	-	-	-	-	-	-	20.5	-	230
243	-	-	-	-	-	-	-	-	-	-	-	-	-	-	-	-	-	-	-	-	-	-	243

		196.9 ft		216.5 ft		236.2 ft		255.9 ft		275.6 ft		295.3 ft								
		1,000 lb																		
ft		92	98	105	112	118	125	131	138	144	151	158	164	177	ft					
92	48.3	-	-	-	39.9	-	-	-	-	-	-	-	-	-	92					
98	47.6	-	-	-	39.5	-	-	33.1	-	-	-	-	-	-	98					
105	46.7	-	-	-	38.8	-	-	32.6	-	28.4	-	-	-	-	105					
112	46.1	-	-	-	38.4	-	-	32.4	-	28.2	-	22.5	-	-	112					
118	45.2	-	-	-	37.9	-	-	32.2	-	28.0	-	22.3	-	17.4	118					
125	44.5	-	-	-	37.3	-	-	31.7	-	27.8	-	22.3	-	17.4	125					
131	43.7	-	-	-	36.8	-	-	31.5	-	27.6	-	22.3	-	17.4	131					
138	43.0	-	-	-	36.4	-	-	31.3	-	27.3	-	22.0	-	17.4	138					
144	42.3	-	-	-	35.9	-	-	30.9	-	27.1	-	22.0	-	17.2	144					
151	41.4	-	-	-	35.5	-	-	30.6	-	26.9	-	22.0	-	17.2	151					
158	40.8	37.3	-	-	35.3	-	-	30.2	-	26.7	-	21.8	-	17.2	158					
164	40.1	35.5	-	-	34.8	33.1	-	30.0	-	26.5	-	21.8	-	17.2	164					
177	39.0	32.2	-	-	34.0	30.2	-	29.3	26.9	26.0	-	21.6	-	17.0	177					
190	37.9	29.3	-	-	33.3	27.3	-	28.7	24.7	25.6	22.9	21.6	19.4	17.0	190					
203	37.3	27.1	23.6	-	32.6	24.7	-	28.4	22.7	25.1	21.4	21.4	18.5	16.8	14.8	203				
217	-	25.1	21.2	-	32.2	22.9	19.4	-	28.0	20.7	24.9	19.6	21.2	17.6	16.8	14.3	217			
230	-	24.0	19.4	-	31.7	21.2	17.2	-	27.8	19.2	15.9	-	21.2	17.0	16.8	14.1	230			
243	-	-	18.1	-	19.8	15.9	-	-	27.3	17.6	13.9	24.0	16.8	13.4	16.5	13.7	243			
256	-	-	17.2	-	19.4	14.3	-	-	16.3	12.6	23.8	15.2	11.7	20.7	14.8	11.7	16.5	13.0	-	256
269	-	-	-	-	-	13.7	-	-	15.9	11.2	23.1	13.9	10.6	20.7	13.4	10.1	16.3	12.1	-	269
282	-	-	-	-	-	-	-	-	10.4	-	13.4	9.3	20.5	12.3	9.0	16.3	11.0	-	-	282
295	-	-	-	-	-	-	-	-	9.9	-	13.0	8.4	-	11.7	7.9	16.1	10.1	-	-	295
308	-	-	-	-	-	-	-	-	-	-	-	7.9	-	11.2	7.1	15.9	9.3	-	-	308
322	-	-	-	-	-	-	-	-	-	-	-	-	-	-	6.6	-	9.0	-	-	322
335	-	-	-	-	-	-	-	-	-	-	-	-	-	-	6.0	-	8.8	-	-	335

Remarks

Counterweight 132,300 lb 176,400 lb 220,500 lb 264,600 lb 308,600 lb 352,700 lb 396,800 lb

Max. capacities with minimum counterweight

Further counterweight configurations on request

STERLING CRANE

LIFTING CAPACITIES LUFFING FLY JIB WITH SSL, MAIN BOOM 83°-65°



85 %

139.4 ft + 13.1 ft Main boom + adapter

		Fly jib															
		98.4 ft			118.1 ft			137.8 ft			157.5 ft			177.2 ft			
Radius		83°	73°	65°	83°	73°	65°	83°	73°	65°	83°	73°	65°	83°	73°	65°	Radius
ft		1,000 lb															ft
59		153.4	-	-	-	-	-	-	-	-	-	-	-	-	-	-	59
66		164.2	-	-	131.4	-	-	-	-	-	-	-	-	-	-	-	66
72		154.3	-	-	147.5	-	-	111.3	-	-	-	-	-	-	-	-	72
79		144.2	-	-	138.9	-	-	130.5	-	-	97.0	-	-	-	-	-	79
85		135.6	-	-	130.3	-	-	124.3	-	-	117.3	-	-	98.3	-	-	85
92		125.2	-	-	122.8	-	-	117.9	-	-	112.7	-	-	96.3	-	-	92
98		116.2	-	-	114.4	-	-	111.8	-	-	108.0	-	-	94.4	-	-	98
105		108.2	94.1	-	106.5	-	-	104.9	-	-	103.4	-	-	92.4	-	-	105
112		101.2	88.0	-	99.4	-	-	97.9	-	-	99.0	-	-	90.4	-	-	112
118		-	82.5	-	93.3	80.5	-	91.7	-	-	93.0	-	-	88.0	-	-	118
125		-	77.6	-	87.7	75.6	-	86.0	73.6	-	87.5	-	-	85.5	-	-	125
131		-	73.2	-	82.9	71.0	-	81.1	69.2	-	82.5	70.5	-	80.9	-	-	131
138		-	69.2	60.8	-	67.0	-	76.5	65.3	-	78.0	66.6	-	76.3	-	-	138
144		-	-	57.5	-	63.5	-	72.5	61.5	-	73.9	62.8	-	72.3	61.1	-	144
151		-	-	54.7	-	60.2	52.5	68.8	58.2	-	70.1	59.5	-	68.6	57.8	-	151
158		-	-	52.0	-	57.3	49.8	-	55.3	47.6	66.6	56.4	-	65.0	54.7	-	158
164		-	-	-	-	-	47.2	-	52.5	45.2	63.5	53.8	-	61.9	51.8	-	164
177		-	-	-	-	-	43.0	-	47.6	40.8	-	48.7	41.9	56.2	47.0	-	177
190		-	-	-	-	-	-	-	-	37.0	-	44.5	38.1	48.5	42.8	36.2	190
203		-	-	-	-	-	-	-	-	-	-	-	34.8	-	39.0	32.8	203
217		-	-	-	-	-	-	-	-	-	-	-	32.0	-	35.9	30.0	217
230		-	-	-	-	-	-	-	-	-	-	-	-	-	-	27.6	230
243		-	-	-	-	-	-	-	-	-	-	-	-	-	-	-	243

		196.9 ft		216.5 ft		236.2 ft		255.9 ft		275.6 ft		295.3 ft		
		1,000 lb												
ft														ft
92		80.0	-	-	54.9	-	-	-	-	-	-	-	-	92
98		78.7	-	-	63.9	-	-	46.5	-	-	-	-	-	98
105		77.4	-	-	63.1	-	-	55.8	-	-	38.4	-	-	105
112		76.1	-	-	61.9	-	-	55.3	-	-	43.7	-	-	112
118		74.5	-	-	61.1	-	-	54.9	-	-	43.4	-	-	118
125		73.2	-	-	60.2	-	-	54.5	-	-	43.0	-	-	125
131		71.9	-	-	59.1	-	-	54.2	-	-	42.8	-	-	131
138		70.3	-	-	58.2	-	-	53.8	-	-	42.3	-	-	138
144		69.0	-	-	57.3	-	-	53.1	-	-	42.1	-	-	144
151		67.7	54.7	-	56.4	-	-	52.5	-	-	41.7	-	-	151
158		64.4	53.6	-	55.3	43.2	-	51.6	-	-	41.0	-	-	158
164		61.1	51.1	-	54.5	42.8	-	50.7	-	-	40.3	-	-	164
177		55.6	46.1	-	52.7	41.4	-	48.9	35.5	-	38.6	30.6	-	177
190		50.7	41.9	-	48.9	40.1	-	47.2	34.8	-	37.0	30.2	-	190
203		46.5	38.4	32.0	44.8	36.4	-	43.0	34.2	-	35.5	30.0	-	203
217		-	35.1	29.1	41.0	33.1	27.1	39.2	31.3	25.1	34.6	29.5	-	217
230		-	32.4	26.7	34.6	30.4	24.7	35.9	28.4	22.7	33.5	28.0	22.3	230
243		-	-	24.5	-	27.8	22.5	33.1	25.8	20.3	32.4	25.6	20.1	243
256		-	-	22.5	-	25.6	20.3	-	23.6	18.3	30.2	23.1	17.9	256
269		-	-	-	-	-	18.5	-	21.6	16.5	23.1	21.2	16.1	269
282		-	-	-	-	-	-	-	-	15.0	-	19.4	14.6	282
295		-	-	-	-	-	-	-	-	13.7	-	17.6	13.0	295
308		-	-	-	-	-	-	-	-	-	-	17.6	13.0	308
322		-	-	-	-	-	-	-	-	-	-	-	11.7	322
335		-	-	-	-	-	-	-	-	-	-	-	9.9	335
348		-	-	-	-	-	-	-	-	-	-	-	8.8	348
361		-	-	-	-	-	-	-	-	-	-	-	-	361

Remarks

Counterweight 176,400 lb 220,500 lb 264,600 lb 308,600 lb 352,700 lb 396,800 lb

Max. capacities with minimum counterweight

Further counterweight configurations on request

STERLING CRANE

LIFTING CAPACITIES LUFFING FLY JIB, MAIN BOOM 83° TO 65°

360° 85 %

154.9 ft + 13.1 ft Main boom + adapter

		Fly jib																		
		78.7 ft			98.4 ft			118.1 ft			137.8 ft			157.5 ft			177.2 ft			
Radius		83°	73°	65°	83°	73°	65°	83°	73°	65°	83°	73°	65°	83°	73°	65°	83°	73°	65°	Radius
ft		1,000 lb																		ft
66		88.6	-	-	78.3	-	-	-	-	-	-	-	-	-	-	-	-	-	-	66
72		84.2	-	-	75.4	-	-	68.8	-	-	-	-	-	-	-	-	-	-	-	72
79		80.7	-	-	72.5	-	-	66.6	-	-	57.1	-	-	52.2	-	-	-	-	-	79
85		77.4	-	-	70.1	-	-	64.4	-	-	55.3	-	-	51.1	-	-	45.6	-	-	85
92		74.7	-	-	67.7	-	-	62.4	-	-	53.6	-	-	50.0	-	-	44.8	-	-	92
98		71.9	-	-	65.5	-	-	60.4	-	-	52.0	-	-	48.9	-	-	43.9	-	-	98
105		-	-	-	63.5	-	-	58.4	-	-	50.7	-	-	47.8	-	-	42.8	-	-	105
112		-	53.1	-	61.7	50.0	-	56.4	-	-	49.4	-	-	46.7	-	-	41.9	-	-	112
118		-	50.3	-	60.6	47.2	-	55.1	-	-	48.1	-	-	45.6	-	-	41.0	-	-	118
125		-	47.4	-	-	44.3	-	53.6	42.1	-	46.7	-	-	44.8	-	-	40.1	-	-	125
131		-	-	-	-	42.3	-	52.2	39.9	-	45.6	38.1	-	43.7	-	-	39.2	-	-	131
138		-	-	-	-	40.3	-	51.1	37.7	-	44.8	36.2	-	42.8	-	-	38.6	-	-	138
144		-	-	-	-	39.0	34.0	-	36.2	-	43.7	34.2	-	41.9	35.3	-	37.7	-	-	144
151		-	-	-	-	-	32.2	-	34.6	-	42.8	32.2	-	41.2	33.5	-	36.8	31.7	-	151
158		-	-	-	-	-	30.4	-	33.5	28.2	42.3	30.9	-	40.3	32.0	-	36.2	30.2	-	158
164		-	-	-	-	-	28.9	-	32.2	26.9	-	29.5	-	39.7	30.2	-	35.7	28.7	-	164
177		-	-	-	-	-	-	-	-	24.5	-	27.1	22.5	38.8	28.0	-	34.4	25.8	-	177
190		-	-	-	-	-	-	-	-	-	-	-	20.3	-	25.8	21.4	33.7	23.6	-	190
203		-	-	-	-	-	-	-	-	-	-	-	18.7	-	24.7	19.6	-	21.8	17.6	203
217		-	-	-	-	-	-	-	-	-	-	-	-	-	18.1	-	-	20.5	16.1	217
230		-	-	-	-	-	-	-	-	-	-	-	-	-	-	-	-	-	14.6	230
243		-	-	-	-	-	-	-	-	-	-	-	-	-	-	-	-	-	13.7	243
256		-	-	-	-	-	-	-	-	-	-	-	-	-	-	-	-	-	-	256

		196.9 ft			216.5 ft			236.2 ft			255.9 ft			275.6 ft			295.3 ft			
ft		1,000 lb																		ft
92		39.5	-	-	-	-	-	-	-	-	-	-	-	-	-	-	-	-	-	92
98		38.8	-	-	31.5	-	-	-	-	-	-	-	-	-	-	-	-	-	-	98
105		38.1	-	-	31.1	-	-	26.2	-	-	-	-	-	-	-	-	-	-	-	105
112		37.5	-	-	30.4	-	-	25.8	-	-	21.2	-	-	-	-	-	-	-	-	112
118		36.8	-	-	30.0	-	-	25.6	-	-	20.9	-	-	18.1	-	-	13.9	-	-	118
125		36.2	-	-	29.5	-	-	25.1	-	-	20.7	-	-	18.1	-	-	13.9	-	-	125
131		35.5	-	-	29.1	-	-	24.9	-	-	20.5	-	-	17.9	-	-	13.7	-	-	131
138		34.8	-	-	28.7	-	-	24.5	-	-	20.3	-	-	17.6	-	-	13.7	-	-	138
144		34.2	-	-	28.2	-	-	24.3	-	-	20.1	-	-	17.4	-	-	13.7	-	-	144
151		33.7	-	-	27.8	-	-	23.8	-	-	19.8	-	-	17.2	-	-	13.7	-	-	151
158		33.1	29.3	-	27.6	-	-	23.6	-	-	19.6	-	-	17.2	-	-	13.7	-	-	158
164		32.4	28.0	-	27.1	-	-	23.4	-	-	19.4	-	-	17.0	-	-	13.4	-	-	164
177		31.3	25.4	-	26.2	23.1	-	22.7	20.5	-	19.2	-	-	16.8	-	-	13.4	-	-	177
190		30.2	22.7	-	25.6	20.7	-	22.3	18.5	-	18.7	17.0	-	16.5	-	-	13.4	-	-	190
203		29.5	20.9	17.2	24.9	18.5	-	21.8	16.8	-	18.3	15.4	-	16.3	12.6	-	13.2	-	-	203
217		29.3	19.2	15.4	24.3	17.0	13.4	21.4	14.8	-	18.1	13.9	-	16.1	11.9	-	13.2	-	-	217
230		-	17.9	13.9	24.0	15.4	11.7	20.9	13.4	10.1	17.9	12.3	-	15.9	11.2	-	13.2	-	-	230
243		-	17.4	12.6	-	14.1	10.4	20.5	12.3	8.6	17.6	11.2	-	15.7	10.6	-	13.2	-	-	243
256		-	-	11.7	-	13.7	9.3	20.1	11.0	7.3	17.4	10.1	-	15.4	9.5	-	13.0	-	-	256
269		-	-	-	-	-	8.4	-	10.4	6.4	17.4	9.0	-	15.2	8.6	-	13.0	-	-	269
282		-	-	-	-	-	7.7	-	9.9	5.5	-	8.4	-	15.2	7.5	-	13.0	-	-	282
295		-	-	-	-	-	-	-	-	4.9	-	7.9	-	14.3	6.8	-	12.8	-	-	295
308		-	-	-	-	-	-	-	-	-	-	-	-	6.4	-	-	12.8	-	-	308
322		-	-	-	-	-	-	-	-	-	-	-	-	6.2	-	-	-	-	-	322
335		-	-	-	-	-	-	-	-	-	-	-	-	-	-	-	-	-	-	335

Remarks

Counterweight 132,300 lb 176,400 lb 220,500 lb 264,600 lb 308,600 lb 352,700 lb 396,800 lb

Max. capacities with minimum counterweight

Further counterweight configurations on request

STERLING CRANE

LIFTING CAPACITIES LUFFING FLY JIB WITH SSL, MAIN BOOM 83°-65°

360° 85 %

154.9 ft + 13.1 ft Main boom + adapter

		Fly jib															
		98.4 ft			118.1 ft			137.8 ft			157.5 ft			177.2 ft			
Radius		83°	73°	65°	83°	73°	65°	83°	73°	65°	83°	73°	65°	83°	73°	65°	Radius
ft		1,000 lb															ft
66		138.0	-	-	-	-	-	-	-	-	-	-	-	-	-	-	66
72		127.9	-	-	121.5	-	-	-	-	-	-	-	-	-	-	-	72
79		121.9	-	-	113.8	-	-	110.2	-	-	84.7	-	-	-	-	-	79
85		117.9	-	-	106.0	-	-	103.6	-	-	101.2	-	-	71.9	-	-	85
92		114.0	-	-	100.8	-	-	97.0	-	-	95.9	-	-	87.3	-	-	92
98		109.8	-	-	97.7	-	-	90.4	-	-	90.6	-	-	83.8	-	-	98
105		104.5	-	-	94.6	-	-	85.8	-	-	85.5	-	-	80.2	-	-	105
112		99.4	86.2	-	91.7	-	-	81.4	-	-	80.5	-	-	76.9	-	-	112
118		94.1	80.7	-	88.8	78.0	-	79.1	-	-	77.2	-	-	73.6	-	-	118
125		-	75.8	-	86.0	73.9	-	76.9	-	-	73.6	-	-	70.3	-	-	125
131		-	71.4	-	82.0	69.4	-	75.2	67.5	-	70.1	-	-	67.2	-	-	131
138		-	67.7	-	66.8	65.5	-	73.4	63.7	-	67.7	63.5	-	64.4	-	-	138
144		-	64.2	55.6	-	61.9	-	71.2	60.0	-	66.4	61.3	-	61.5	-	-	144
151		-	-	52.7	-	58.6	-	68.1	56.9	-	65.0	58.2	-	58.4	53.1	-	151
158		-	-	50.0	-	55.8	47.8	54.5	53.8	-	63.7	55.1	-	56.9	51.8	-	158
164		-	-	47.6	-	53.1	45.4	-	51.1	-	62.4	52.5	-	55.3	50.5	-	164
177		-	-	-	-	-	41.0	-	46.3	39.0	46.1	47.6	40.1	53.1	45.6	-	177
190		-	-	-	-	-	-	-	-	35.3	-	43.4	36.4	50.9	41.4	34.4	190
203		-	-	-	-	-	-	-	-	32.2	-	39.9	33.3	-	37.9	31.3	203
217		-	-	-	-	-	-	-	-	-	-	30.4	-	34.8	28.4	-	217
230		-	-	-	-	-	-	-	-	-	-	-	-	-	26.0	-	230
243		-	-	-	-	-	-	-	-	-	-	-	-	-	23.8	-	243
256		-	-	-	-	-	-	-	-	-	-	-	-	-	-	-	256

		196.9 ft			216.5 ft			236.2 ft			255.9 ft			275.6 ft			295.3 ft			
ft		1,000 lb															ft			
92		58.2	-	-	-	-	-	-	-	-	-	-	-	-	-	-	-	92		
98		69.2	-	-	48.7	-	-	-	-	-	-	-	-	-	-	-	-	98		
105		67.5	-	-	59.1	-	-	48.3	-	-	-	-	-	-	-	-	-	105		
112		65.7	-	-	57.8	-	-	47.6	-	-	40.1	-	-	24.5	-	-	-	112		
118		63.9	-	-	56.4	-	-	47.2	-	-	39.9	-	-	31.7	-	-	18.7	118		
125		62.2	-	-	55.1	-	-	46.5	-	-	39.7	-	-	31.5	-	-	25.4	125		
131		60.6	-	-	53.8	-	-	46.1	-	-	39.5	-	-	31.5	-	-	25.1	131		
138		58.9	-	-	52.5	-	-	45.4	-	-	39.2	-	-	31.3	-	-	24.9	138		
144		57.1	-	-	51.1	-	-	44.8	-	-	39.0	-	-	31.1	-	-	24.7	144		
151		55.3	-	-	50.0	-	-	44.1	-	-	38.8	-	-	30.9	-	-	24.7	151		
158		53.8	45.0	-	48.7	-	-	43.2	-	-	38.4	-	-	30.6	-	-	24.5	158		
164		52.0	44.1	-	47.6	37.5	-	42.3	-	-	37.9	-	-	30.6	-	-	24.3	164		
177		49.4	42.5	-	45.2	36.6	-	40.6	31.1	-	36.8	-	-	29.8	-	-	23.8	177		
190		46.7	40.8	-	43.0	35.7	-	38.6	30.4	-	35.5	24.7	-	28.9	-	-	23.1	190		
203		44.5	37.0	30.4	40.8	34.8	-	36.8	29.5	-	34.4	24.3	-	28.0	19.4	-	22.5	14.8	203	
217		32.6	34.0	27.6	38.6	32.0	25.6	34.8	28.9	-	32.8	24.0	-	27.3	19.2	-	21.6	14.8	217	
230		-	31.3	25.1	36.2	29.3	23.1	33.1	27.3	21.2	31.3	23.6	-	26.2	19.2	-	20.9	14.8	230	
243		-	28.9	22.9	-	26.7	20.9	32.2	24.9	19.0	29.5	23.1	18.3	25.4	19.0	-	20.3	14.8	243	
256		-	-	20.9	-	24.7	19.0	20.9	22.7	17.0	28.7	22.3	16.5	24.5	18.7	13.9	19.4	14.8	256	
269		-	-	-	-	17.2	-	20.7	15.2	12.3	25.1	20.3	14.8	23.8	18.5	13.7	18.7	14.8	9.7	269
282		-	-	-	-	15.7	-	19.0	13.7	-	18.5	13.2	10.4	23.4	18.1	12.8	18.1	14.8	9.7	282
295		-	-	-	-	-	-	-	12.3	-	16.8	11.7	9.3	14.3	16.3	11.2	17.6	14.8	9.7	295
308		-	-	-	-	-	-	-	-	-	-	10.4	-	15.0	9.9	17.2	13.9	9.0	308	
322		-	-	-	-	-	-	-	-	-	-	9.3	-	13.7	8.8	-	12.6	7.7	322	
335		-	-	-	-	-	-	-	-	-	-	-	-	7.7	-	-	11.5	6.8	335	
348		-	-	-	-	-	-	-	-	-	-	-	-	-	-	-	-	5.7	348	
361		-	-	-	-	-	-	-	-	-	-	-	-	-	-	-	-	4.9	361	

Remarks

Counterweight 176,400 lb 220,500 lb 264,600 lb 308,600 lb 352,700 lb 396,800 lb

Max. capacities with minimum counterweight

Further counterweight configurations on request

STERLING CRANE

LIFTING CAPACITIES LUFFING FLY JIB, MAIN BOOM 83° TO 65°

360° 85 %

169.9 ft + 13.1 ft Main boom + adapter

		Fly jib																		
		78.7 ft			98.4 ft			118.1 ft			137.8 ft			157.5 ft			177.2 ft			
Radius		83°	73°	65°	83°	73°	65°	83°	73°	65°	83°	73°	65°	83°	73°	65°	83°	73°	65°	Radius
ft		1,000 lb																		ft
66		71.0	-	-	62.2	-	-	-	-	-	-	-	-	-	-	-	-	-	-	66
72		67.7	-	-	60.0	-	-	53.6	-	-	-	-	-	-	-	-	-	-	-	72
79		65.0	-	-	57.5	-	-	52.0	-	-	45.0	-	-	-	-	-	-	-	-	79
85		62.4	-	-	55.8	-	-	50.5	-	-	43.9	-	-	41.0	-	-	-	-	-	85
92		60.4	-	-	54.2	-	-	48.9	-	-	42.5	-	-	39.9	-	-	35.1	-	-	92
98		58.9	-	-	52.5	-	-	47.6	-	-	41.4	-	-	39.0	-	-	34.4	-	-	98
105		-	-	-	51.4	-	-	46.3	-	-	40.3	-	-	37.9	-	-	33.5	-	-	105
112		-	-	-	50.3	-	-	45.0	-	-	39.2	-	-	37.0	-	-	32.8	-	-	112
118		-	41.2	-	49.4	39.2	-	43.9	-	-	38.4	-	-	36.2	-	-	32.2	-	-	118
125		-	38.8	-	-	37.3	-	42.5	-	-	37.3	-	-	35.3	-	-	31.3	-	-	125
131		-	37.3	-	-	35.3	-	41.7	32.6	-	36.4	-	-	34.4	-	-	30.6	-	-	131
138		-	-	-	-	33.3	-	40.6	31.1	-	35.7	29.1	-	33.7	-	-	30.2	-	-	138
144		-	-	-	-	31.7	-	-	29.5	-	34.8	27.6	-	33.1	-	-	29.5	-	-	144
151		-	-	-	-	30.4	-	-	28.0	-	34.2	26.0	-	32.4	26.9	-	28.9	-	-	151
158		-	-	-	-	-	24.5	-	26.7	-	33.7	24.7	-	31.7	25.6	-	28.2	23.6	-	158
164		-	-	-	-	-	23.1	-	25.6	20.9	-	23.4	-	31.1	24.3	-	27.8	22.5	-	164
177		-	-	-	-	-	-	-	18.7	-	21.2	17.0	-	30.6	22.0	-	26.9	20.1	-	177
190		-	-	-	-	-	-	-	17.0	-	19.8	15.0	-	-	20.3	16.1	26.0	18.1	-	190
203		-	-	-	-	-	-	-	-	-	-	13.4	-	-	19.0	14.3	-	16.5	12.6	203
217		-	-	-	-	-	-	-	-	-	-	-	-	-	-	13.0	-	15.2	11.0	217
230		-	-	-	-	-	-	-	-	-	-	-	-	-	-	12.1	-	14.6	9.9	230
243		-	-	-	-	-	-	-	-	-	-	-	-	-	-	-	-	-	8.8	243
256		-	-	-	-	-	-	-	-	-	-	-	-	-	-	-	-	-	-	256

		196.9 ft			216.5 ft			236.2 ft			255.9 ft			275.6 ft			295.3 ft			
ft		1,000 lb																		ft
98		30.0	-	-	23.8	-	-	-	-	-	-	-	-	-	-	-	-	-	-	98
105		29.3	-	-	23.4	-	-	19.0	-	-	-	-	-	-	-	-	-	-	-	105
112		28.9	-	-	23.1	-	-	18.7	-	-	14.8	-	-	-	-	-	-	-	-	112
118		28.4	-	-	22.7	-	-	18.3	-	-	14.6	-	-	11.2	-	-	-	-	-	118
125		27.8	-	-	22.3	-	-	18.1	-	-	14.3	-	-	11.0	-	-	7.9	-	-	125
131		27.3	-	-	22.0	-	-	17.9	-	-	14.1	-	-	11.0	-	-	7.9	-	-	131
138		26.9	-	-	21.6	-	-	17.4	-	-	13.9	-	-	10.8	-	-	7.7	-	-	138
144		26.2	-	-	21.2	-	-	17.2	-	-	13.7	-	-	10.6	-	-	7.7	-	-	144
151		25.8	-	-	20.9	-	-	17.0	-	-	13.4	-	-	10.6	-	-	7.7	-	-	151
158		25.4	-	-	20.5	-	-	16.5	-	-	13.2	-	-	10.4	-	-	7.7	-	-	158
164		24.9	20.9	-	20.3	-	-	16.3	-	-	13.2	-	-	10.4	-	-	7.7	-	-	164
177		24.0	19.2	-	19.4	16.1	-	15.7	-	-	12.8	-	-	9.9	-	-	7.5	-	-	177
190		23.4	17.2	-	19.2	14.6	-	15.2	12.1	-	12.3	-	-	9.7	-	-	7.5	-	-	190
203		22.7	15.7	-	18.7	13.2	-	14.8	10.8	-	12.1	-	-	9.5	-	-	7.3	-	-	203
217		22.5	14.3	10.6	18.3	11.9	-	14.6	9.7	-	11.9	-	-	9.3	-	-	7.3	-	-	217
230		-	13.0	9.3	18.3	10.8	-	14.1	8.6	-	11.7	-	-	9.3	-	-	7.3	-	-	230
243		-	12.3	8.2	-	9.7	-	13.9	7.7	-	11.7	-	-	9.0	-	-	7.1	-	-	243
256		-	-	7.1	-	8.8	-	13.7	6.8	-	11.5	-	-	8.8	-	-	7.1	-	-	256
269		-	-	6.6	-	8.4	-	-	6.0	-	11.2	-	-	8.8	-	-	6.8	-	-	269
282		-	-	-	-	-	-	-	5.5	-	-	-	-	8.6	-	-	6.8	-	-	282
295		-	-	-	-	-	-	-	-	-	-	-	-	8.6	-	-	6.6	-	-	295
308		-	-	-	-	-	-	-	-	-	-	-	-	-	-	-	6.6	-	-	308
322		-	-	-	-	-	-	-	-	-	-	-	-	-	-	-	-	-	-	322

Remarks

Counterweight 132,300 lb 176,400 lb 220,500 lb 264,600 lb 308,600 lb 352,700 lb 396,800 lb

Max. capacities with minimum counterweight

Further counterweight configurations on request

STERLING CRANE

LIFTING CAPACITIES LUFFING FLY JIB WITH SSL, MAIN BOOM 83°-65°

360° 85 %

169.9 ft + 13.1 ft Main boom + adapter

		Fly jib															
		98.4 ft			118.1 ft			137.8 ft			157.5 ft			177.2 ft			
Radius		83°	73°	65°	83°	73°	65°	83°	73°	65°	83°	73°	65°	83°	73°	65°	Radius
ft		1,000 lb															ft
66		110.5	-	-	-	-	-	-	-	-	-	-	-	-	-	-	66
72		106.5	-	-	92.4	-	-	-	-	-	-	-	-	-	-	-	72
79		102.5	-	-	92.8	-	-	78.3	-	-	-	-	-	-	-	-	79
85		99.2	-	-	86.4	-	-	83.8	-	-	68.6	-	-	-	-	-	85
92		96.1	-	-	83.6	-	-	78.3	-	-	77.4	-	-	70.5	-	-	92
98		93.0	-	-	81.1	-	-	73.0	-	-	73.2	-	-	67.5	-	-	98
105		90.8	-	-	78.7	-	-	69.2	-	-	68.8	-	-	64.4	-	-	105
112		88.8	-	-	76.5	-	-	67.2	-	-	64.4	-	-	61.5	-	-	112
118		86.6	73.2	-	75.0	-	-	65.5	-	-	61.7	-	-	58.4	-	-	118
125		-	69.0	-	73.4	66.1	-	63.5	-	-	58.9	-	-	55.6	-	-	125
131		-	65.5	-	72.1	63.1	-	62.4	-	-	56.9	-	-	53.4	-	-	131
138		-	62.2	-	70.8	59.7	-	61.3	55.6	-	55.6	-	-	50.9	-	-	138
144		-	59.5	-	-	57.1	-	60.2	53.6	-	54.7	49.8	-	48.7	-	-	144
151		-	56.9	48.1	-	54.5	-	59.1	51.6	-	53.8	48.7	-	46.7	42.5	-	151
158		-	-	45.6	-	52.5	-	58.2	49.8	-	52.9	47.6	-	45.9	41.7	-	158
164		-	-	43.4	-	50.5	41.4	-	48.1	-	52.0	46.3	-	45.2	40.8	-	164
177		-	-	-	-	-	37.7	-	44.5	36.4	50.7	43.9	-	43.9	38.8	-	177
190		-	-	-	-	-	35.1	-	40.6	33.1	-	41.2	34.4	42.8	37.3	-	190
203		-	-	-	-	-	-	-	-	30.4	-	38.4	31.3	-	35.7	30.0	203
217		-	-	-	-	-	-	-	-	-	-	-	29.1	-	34.0	27.3	217
230		-	-	-	-	-	-	-	-	-	-	-	26.9	-	31.3	24.9	230
243		-	-	-	-	-	-	-	-	-	-	-	-	-	-	22.7	243
256		-	-	-	-	-	-	-	-	-	-	-	-	-	-	-	256

		196.9 ft		216.5 ft		236.2 ft		255.9 ft		275.6 ft		295.3 ft			
		1,000 lb													
ft														ft	
92		50.5	-	-	-	-	-	-	-	-	-	-	-	92	
98		60.6	-	-	40.8	-	-	-	-	-	-	-	-	98	
105		58.9	-	-	50.7	-	-	33.3	-	-	-	-	-	105	
112		56.9	-	-	49.4	-	-	42.5	-	-	25.1	-	-	112	
118		54.9	-	-	47.8	-	-	41.7	-	-	35.1	-	-	118	
125		53.1	-	-	46.3	-	-	40.8	-	-	34.6	-	28.4	125	
131		51.1	-	-	44.8	-	-	39.9	-	-	34.2	-	28.2	131	
138		49.2	-	-	43.2	-	-	38.8	-	-	33.7	-	27.8	138	
144		47.2	-	-	41.9	-	-	37.9	-	-	33.1	-	27.6	144	
151		45.2	-	-	40.3	-	-	37.0	-	-	32.6	-	27.3	151	
158		43.2	-	-	38.8	-	-	35.7	-	-	32.0	-	27.1	158	
164		41.4	35.9	-	37.5	-	-	34.6	-	-	31.5	-	26.9	164	
177		38.8	34.4	-	34.6	29.3	-	32.2	-	-	29.5	-	26.0	177	
190		36.8	32.8	-	32.6	28.0	-	29.8	24.0	-	27.8	19.4	-	20.3	190
203		35.9	31.7	-	30.6	26.9	-	27.8	22.9	-	26.0	19.0	-	19.4	203
217		35.3	30.9	26.5	29.5	25.8	-	26.2	21.8	-	24.5	18.5	-	18.7	217
230		-	29.8	24.0	29.1	25.1	22.0	24.5	20.9	-	22.9	17.9	-	18.1	230
243		-	28.0	21.8	-	24.3	19.8	23.8	20.3	17.4	21.6	17.4	-	17.4	243
256		-	-	20.1	-	23.6	18.1	23.6	19.6	15.9	20.5	16.8	13.0	19.2	256
269		-	-	18.3	-	22.0	16.3	-	19.2	14.1	20.1	16.3	12.6	18.1	269
282		-	-	-	-	14.8	-	-	18.3	12.6	-	15.7	12.1	17.6	282
295		-	-	-	-	-	-	-	11.2	-	-	15.4	10.8	17.2	295
308		-	-	-	-	-	-	-	10.1	-	-	14.8	9.5	-	308
322		-	-	-	-	-	-	-	-	-	-	8.4	-	13.0	322
335		-	-	-	-	-	-	-	-	-	-	-	-	7.9	335
348		-	-	-	-	-	-	-	-	-	-	-	-	6.8	348
361		-	-	-	-	-	-	-	-	-	-	-	-	6.0	361

Remarks

Counterweight 176,400 lb 220,500 lb 264,600 lb 308,600 lb 352,700 lb 396,800 lb

Max. capacities with minimum counterweight

Further counterweight configurations on request