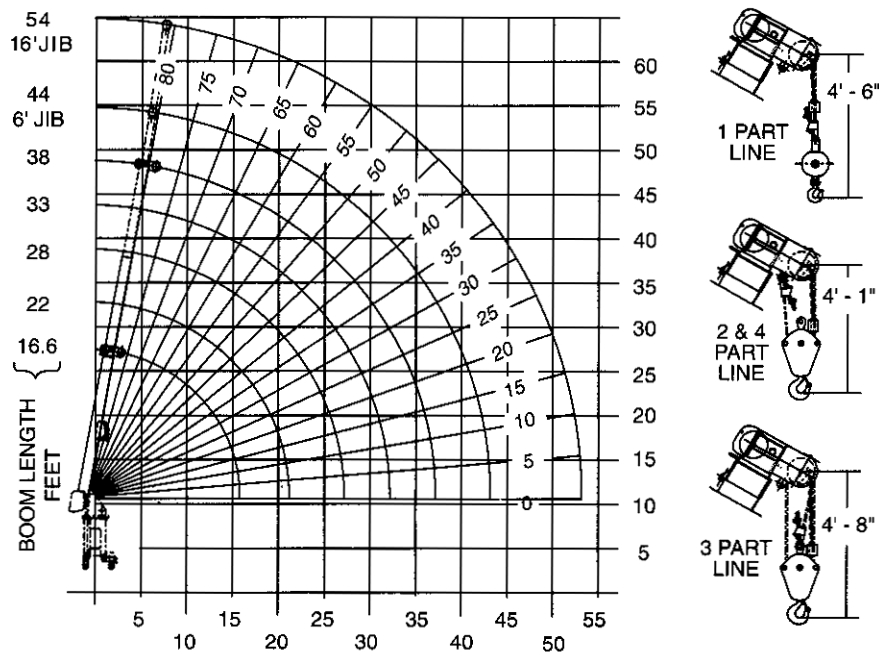




LIFTING CHARTS - Boom Trucks

USTC MODEL 1250JBT - 12.5 TON CAPACITY

38 FOOT BOOM



RATED LIFTING CAPACITIES IN POUNDS					
LOAD RADIUS FEET	BOOM LENGTH IN FEET				
	16.6	22	28	33	38
5	25000				
10	16000	15000	14000	13500	13000
15	12000	11500	11000	10500	9600
20		8600	8200	7800	7400
25			6300	6000	5700
30				5000	4600
35					3700
PERMISSIBLE ROPE PULL					
NUMBER PARTS LINE	9/16" Dia. (200') 6x37 IWR IPS Class		9/16" Dia. (200') of HSLR 18 T. NOM. Strength		
SINGLE	8400 lbs.		7500 lbs.		
TWO	16800 lbs.		15000 lbs.		
THREE	25000 lbs.		22500 lbs.		
FOUR			25000 lbs.		

STERLING CRANE

38 FOOT BOOM

RATED JIB LIFTING CAPACITIES IN POUNDS			
6 FT. FIXED JIB		16 FT. FIXED JIB	
MINIMUM BOOM ANGLE		MINIMUM BOOM ANGLE	
80°	7400	80°	5100
75°	6600	75°	4100
70°	6000	70°	3100
65°	5500	65°	2400
60°	5000	60°	1900
55°	4600	55°	1600
50°	4200	50°	1400
45°	3800	45°	1200
40°	3500	40°	1000
35°	3200	35°	900
30°	3000	30°	800
20°	2600	25°	700
10°	2300	20°	600
0°	2000	10°	500

WEIGHT REDUCTION FOR LOAD HANDLING DEVICES

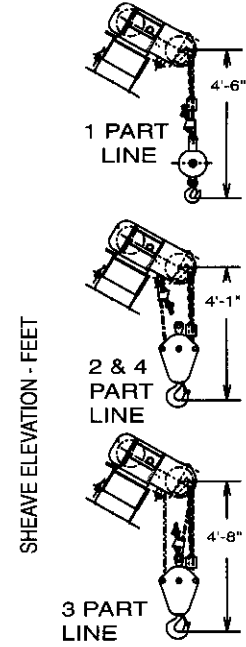
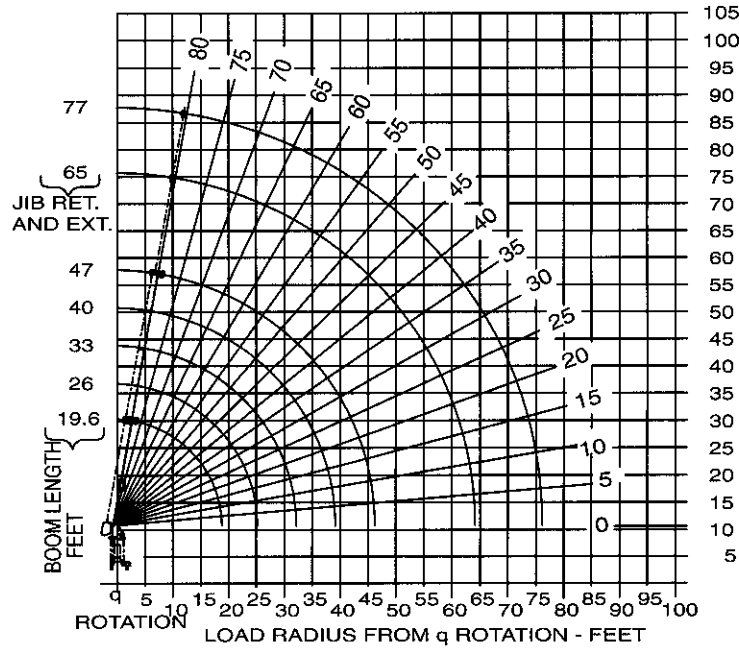
Headache Ball	130 lbs.
Hook Block (Single Sheave)	220 lbs.
Jib Stowed	50 lbs.
Jib Erected	700 lbs.

Do not operate this crane unless you know the diameter and type rope currently installed on the crane. Do not exceed permissible rope pull of rope installed on this crane. Do not use 3 part line with boom length over 33 feet. Do not use 4 part line with boom length over 28 feet.

HOIST SPECIFICATIONS – BRADEN PD12C				
Performance @ 3000 PSI	Low Speed – 39 gpm		High Speed – 63 gpm	
	Line Speed		Line Pull	
1 ST LAYER	140 fpm		230 fpm	
2 ND LAYER	155 fpm		255 fpm	
3 RD LAYER	170 fpm		285 fpm	
			7000 lbs.	
			6315 lbs.	
			5750 lbs.	

STERLING CRANE

47 FOOT BOOM



RATED LIFTING CAPACITIES IN POUNDS					
LOAD RADIUS FEET	BOOM LENGTH IN FEET				
	19.6	26	33	40	47
5	25000				
10	15000	14500	13750	13000	12250
15	11000	10500	10000	9600	9000
20		8000	7700	7400	7100
25		6000	5900	5700	5500
30			4600	4500	4400
35				3700	3600
40					3000
45					2500
PERMISSIBLE ROPE PULL					
NUMBER PARTS LINE	9/16" Dia. (200') 6x37 IWR IPS Class		9/16" Dia. (200') of HSLR 18 T. NOM. Strength		
SINGLE	8400 lbs.		7400 lbs.		
TWO	16800 lbs.		14800 lbs.		
THREE	25000 lbs.		20000 lbs.		
FOUR			25000 lbs.		

STERLING CRANE

47 FOOT BOOM

RATED JIB LIFTING CAPACITIES IN POUNDS				
18-30 FT. 2 SECTION JIB			18 FT. FIXED JIB	
MINIMUM BOOM ANGLE	JIB FULLY RETRACTED	JIB FULLY EXTENDED	MINIMUM BOOM ANGLE	
80°	5000	3400	80°	5100
75°	4000	2600	75°	4100
70°	3000	2100	70°	3100
65°	2300	1700	65°	2400
60°	1800	1300	60°	1900
55°	1500	1100	55°	1600
50°	1300	900	50°	1400
45°	1100	800	45°	1200
40°	900	700	40°	1000
35°	800	600	35°	900
30°	700	500	30°	800
25°	600		25°	700
20°	500		20°	600
10°			10°	500

WEIGHT REDUCTION FOR LOAD HANDLING DEVICES

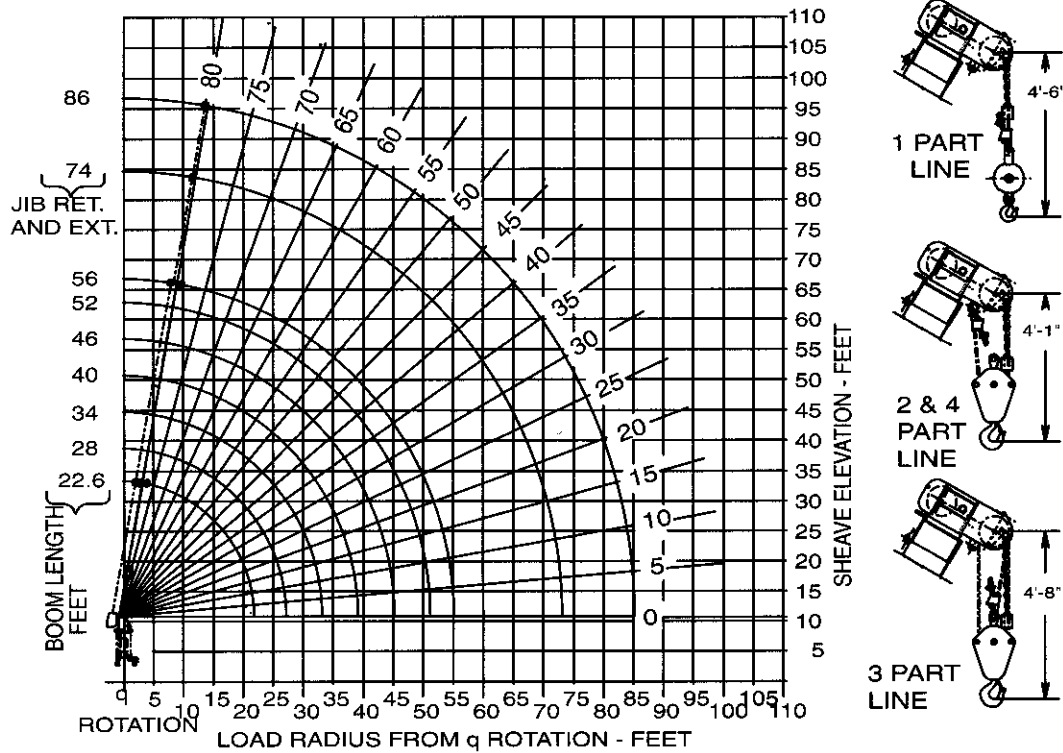
Headache Ball	130 lbs.
Hook Block (Single Sheave)	220 lbs.
2-Section Jib Stowed	75 lbs.
2-Section Jib Erected (Retracted)	900 lbs.
2-Section Jib Erected (Extended)	1100 lbs.
1-Section Jib Stowed	50 lbs.
1-Section Jib Erected	700 lbs.

Do not operate this crane unless you know the diameter and type rope currently installed on the crane. Do not exceed permissible rope pull of rope installed on this crane. Do not use 3 part line with boom length over 34 feet. Do not use 4 part line with boom length over 28 feet.

HOIST SPECIFICATIONS – BRADEN PD12C			
Performance @ 3000 PSI	Low Speed – 39 gpm		High Speed – 63 gpm
	Line Speed		Line Speed
1ST LAYER	140 fpm		230 fpm
2ND LAYER	155 fpm		255 fpm
3RD LAYER	170 fpm		285 fpm
			Line Pull
			7000 lbs.
			6315 lbs.
			5750 lbs.

STERLING CRANE

56 FOOT BOOM



RATED LIFTING CAPACITIES IN POUNDS							
LOAD RADIUS FEET	BOOM LENGTH IN FEET						
	22.6	28	34	40	46	52	56
5	25000						
10	15000	14500	13750	13000	12250	10750	
15	11000	10500	10000	9600	9000	8000	7000
20	8200	8000	7700	7400	7100	6800	5900
25		6000	5900	5700	5500	5400	5200
30			4600	4500	4400	4300	4200
35				3700	3600	3500	3500
40					3000	3000	2900
45					2500	2500	2500
50						2100	2100
55							1700
PERMISSIBLE ROPE PULL							
NUMBER PARTS LINE	9/16" Dia. (200') 6x37 IWR IPS Class			9/16" Dia. (200') of HSLR 18 T. NOM. Strength			
SINGLE	8400 lbs.			7400 lbs.			
TWO	16800 lbs.			14800 lbs.			
THREE	25000 lbs.			20000 lbs.			
FOUR				25000 lbs.			

STERLING CRANE

56 FOOT BOOM

RATED JIB LIFTING CAPACITIES IN POUNDS				
18-30 FT. 2 SECTION JIB			18 FT. FIXED JIB	
MINIMUM BOOM ANGLE	JIB FULLY RETRACTED	JIB FULLY EXTENDED	MINIMUM BOOM ANGLE	
80°	5000	3200	80°	5100
75°	4000	2400	75°	4100
70°	3000	2000	70°	3100
65°	2200	1600	65°	2300
60°	1600	1200	60°	1700
55°	1300	1000	55°	1400
50°	1100	800	50°	1200
45°	900	700	45°	1000
40°	800	600	40°	900
35°	700	500	35°	800
30°	600		30°	700
20°	500		20°	600
10°			10°	500

WEIGHT REDUCTION FOR LOAD HANDLING DEVICES

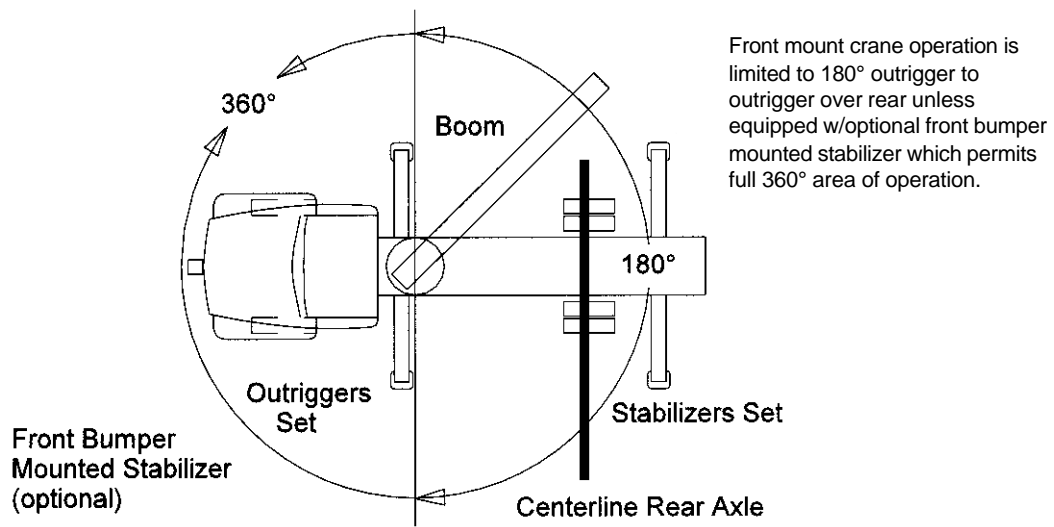
Headache Ball	130 lbs.
Hook Block (Single Sheave)	220 lbs.
2-Section Jib Stowed	90 lbs.
2-Section Jib Erected (Retracted)	950 lbs.
2-Section Jib Erected (Extended)	1200 lbs.
1-Section Jib Stowed	60 lbs.
1-Section Jib Erected	750 lbs.

Do not operate this crane unless you know the diameter and type rope currently installed on the crane. Do not exceed permissible rope pull of rope installed on this crane. Do not use 3 part line with boom length over 34 feet. Do not use 4 part line with boom length over 28 feet.

HOIST SPECIFICATIONS – BRADEN PD12C			
Performance @ 3000 PSI	Low Speed – 39 gpm		High Speed – 63 gpm
	Line Speed		Line Pull
1 ST LAYER	140 fpm	230 fpm	7000 lbs.
2 ND LAYER	155 fpm	255 fpm	6315 lbs.
3 RD LAYER	170 fpm	285 fpm	5750 lbs.

STERLING CRANE

AREA OF OPERATION

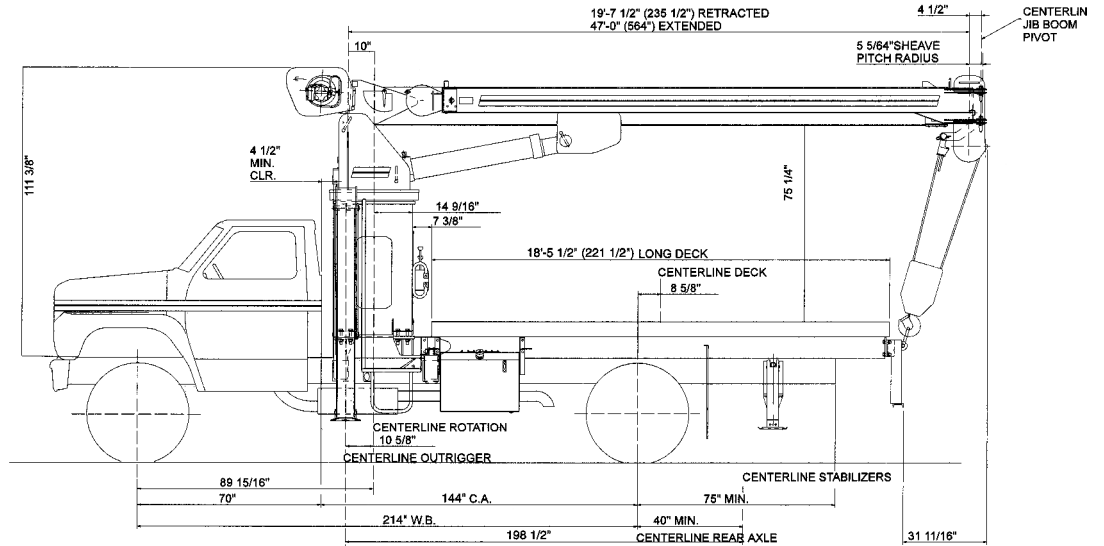


STERLING CRANE

47 FOOT SINGLE FRONT AXLE MOUNT

Wheelbase: 214"
 Cab to Axle: 144"
 Min. A. F.: 75"
 Min. F.A.W.R.: 12,000 #
 Min. R.A.W.F.: 20,000 #

Truck Frame: 13.3 in.³ S.M. on 110,000 psi or 18.0 in.³ S.M. on 50,000 psi (for 180° area of operation)



56 FOOT FRONT MOUNT SINGLE FRONT AXLE MOUNT

Wheelbase: 214"
 Cab to Axle: 144"
 Min. A. F.: 75"
 Min. F.A.W.R.: 12,000 #
 Min. R.A.W.F.: 20,000 #

Truck Frame: 13.3 in.³ S.M. on 110,000 psi or 18.0 in.³ S.M. on 50,000 psi (for 180° area of operation)

