

# STERLING CRANE

TRANSPORTATION SPECS - All Terrain Cranes

## TEREX MODEL AC 700-1 - 800 TON CAPACITY

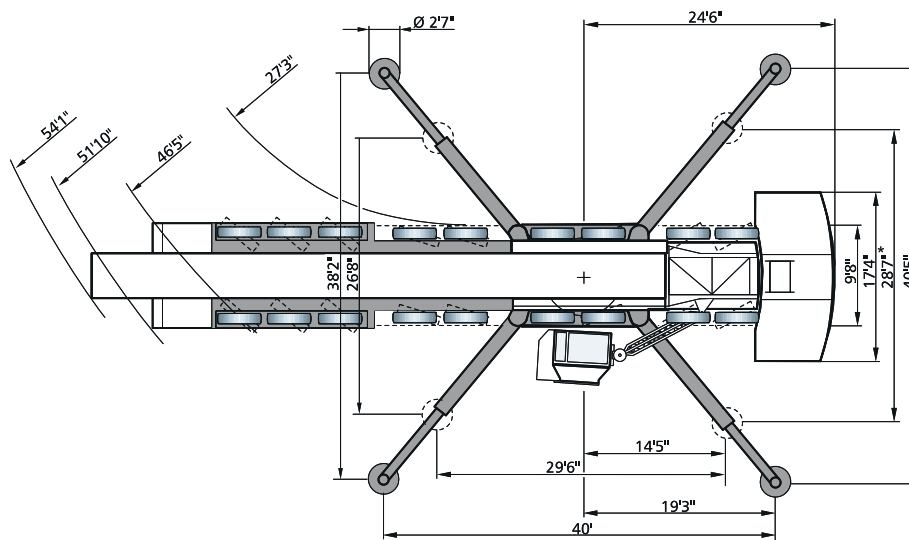


<u>COMPONENT WEIGHTS</u>	<u>LBS.</u>	<u>KGS.</u>	<u>FIXED FLY JIB 20 – 50M (65.6 – 164 FEET)</u>	<u>LBS.</u>	<u>KGS.</u>
Complete Crane c/w full cwt. & block	611,997	277 600	Boom Adapter 2.4m	3,080	1 397
House, Carrier and Rear Outriggers 67'9" / 61'2" x 9'10" x 13'2"	139,993	63 500	Insert 12m                      2 pcs. Ea.	5,732	2 600
Superstructure c/w Hoist 1	54,454	24 700	Reducer 3m	1,543	700
Main Boom with Superlift Bracing only	89,286	40 500	Insert 12m	3,527	1 600
Counterweights:			Jib Tip 3.5m	5,291	2 400
Base Plate	44,092	20 000	Insert 6m	3,520	1 600
8 Main Counterweights 10t      ea.	22,046	10 000	Jib Tip 5.47m	3,086	1 400
6 Additional Counterweights 10t ea.	22,046	10 000	<u>LUFFING FLY JIB 24 – 96M (79 – 315 FEET)</u>		
Total Counterweights	352,736	160 000	Boom Adapter 2.4m	3,086	1 400
			Butt Section 12m	5,732	2 600
<u>ADDITIONAL WEIGHTS</u>			Inserts 12m                      2 pcs. Ea.	5,291	2 400
200mT – 7 Sheave Block	5,732	2 600	Reducer 3m	1,543	700
100mT – 3 Sheave Block	3,969	1 800	Insert 6m	2,420	1 097
40t – Single Sheave Block	2,866	1 300	Insert 12m	3,527	1 600
13.5t – Ball	1,433	650	Jib Tip 3.5m	5,291	2 400
Outriggers - 4 pcs.	10,582	4 800	Insert 6m	3,520	1 600
Superlift Attachment	24,250	11 000	Insert 6m                      2 pcs. Ea.	1,760	798
Rooster Sheave	574	260	Insert 6m	3,527	1 600
Tire Size 17.5R25			Insert 12m	3,086	1 400
			Jib Tip 5.47m	3,086	1 400
			Upper & Lower Masts 12m (Note: Masts are moved with adapter, butt @ 11t)	15,432	7 000



# STERLING CRANE

## Dimensions



\*)Duties with reduced outrigger base on request

# STERLING CRANE

## Specifications

### Axle loads and weights

Crane with main boom, rear outriggers and hook block	9 x 26,500 lb
Axles	238,500 lb
Total weight	

### Working speeds (infinitely variable)

Mechanisms	Line speed	Max. permissible line pull	Rope length
Hoist I	max. 469 ft / min	30,150 lb	1640 ft
Hoist II	max. 495 ft / min	30,150 lb	2530 ft
Slewing			max. 1.0 rpm
Telescoping speed			50.9 – 196.6 ft: approx. 480 s
Boom elevation			-0.5° – +83°: 120 s

### Carrier performance

Travel speed	0 to 39 mph
--------------	-------------

### Hook block / Heavy-lift attachment

Type	Possible load	Number of sheaves	Weight	„D“	max. reeving	Heavy-lift attachment
320	689,000 lb	13	8,800 lb	13 ft	26	2 add. sheaves
250	518,100 lb	9	6,200 lb	13 ft	19	
200	417,000 lb	7	5,700 lb	10 ft	15	
160	311,000 lb	5	4,900 lb	10 ft	11	
100	203,000 lb	3	4,000 lb	10 ft	7	
40	88,200 lb	1	2,700 lb	9 ft	3	
13.5	30,000 lb	Single line hook	1,400 lb	7 ft	1	