



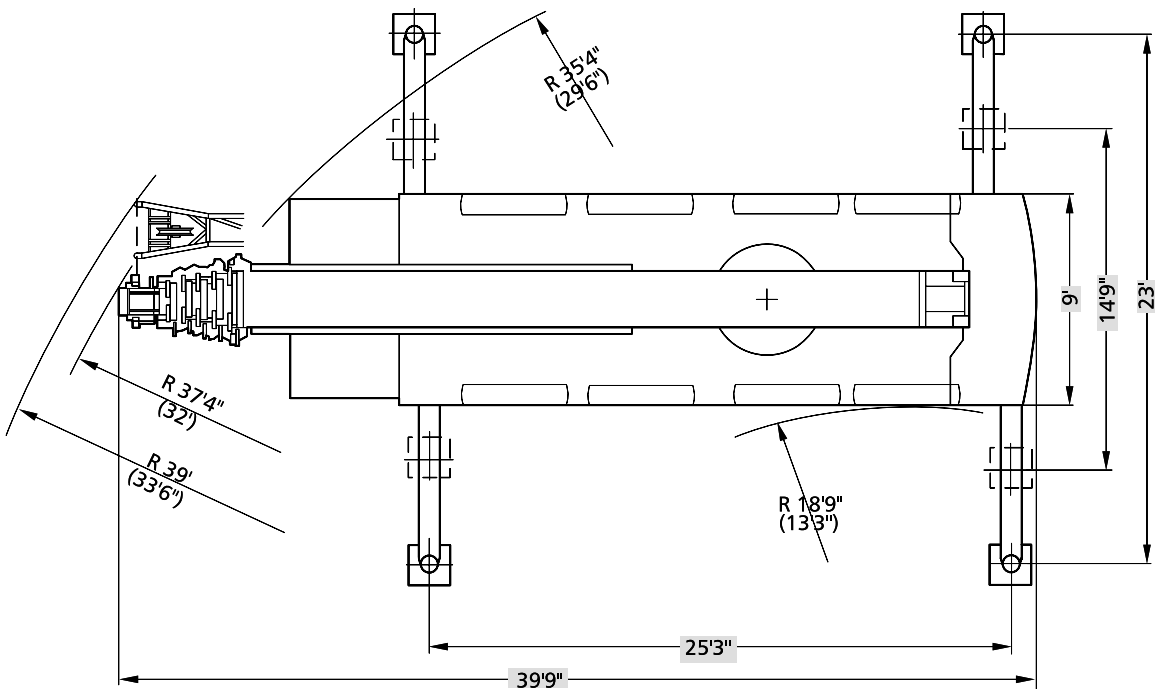
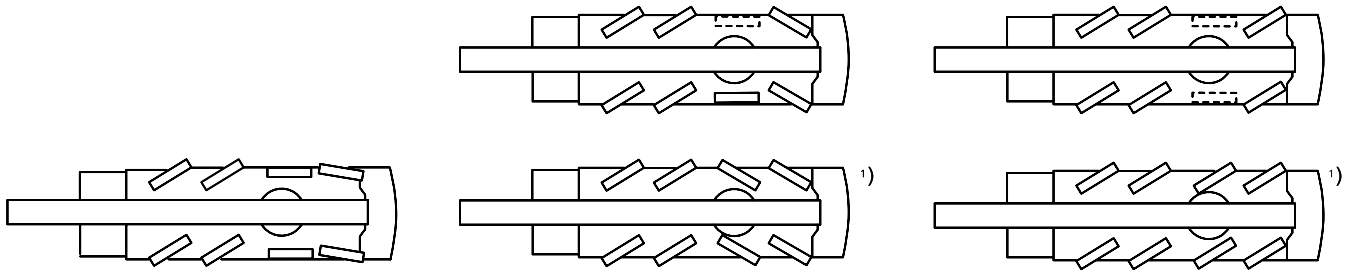
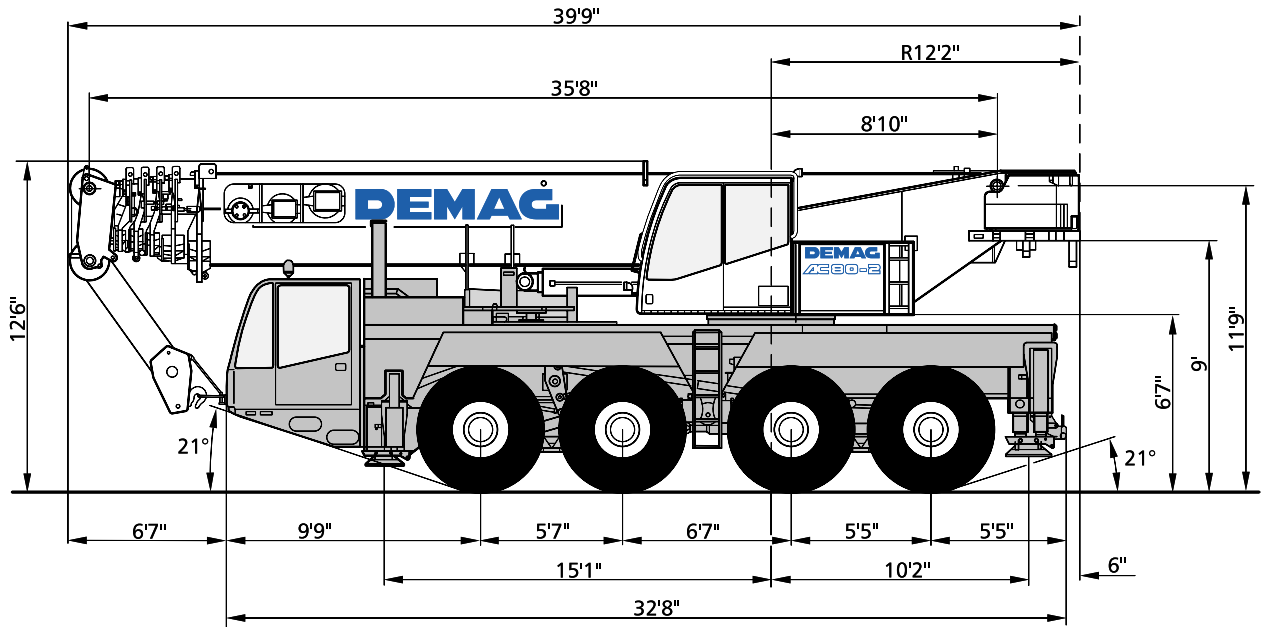
## TRANSPORTATION SPECS - All Terrain Cranes

### DEMAG MODEL AC 80-2 - 100 TON CAPACITY

<u>COMPONENT WEIGHTS</u>	<u>LBS.</u>	<u>KGS.</u>	<u>JIB O.D. 3'8" X 4'11"</u>	<u>LBS.</u>	<u>KGS.</u>
Complete Crane c/w Block, Swingaway Jib and Maximum CWT	132,396	60 180	Fixed Fly 30'3" to 57'8"	2,640	1 200
Main Unit c/w Outriggers	105,600	48 000			
Counterweight Minimum	11,000	5,000			
Counterweight Maximum	39,700	18 045			
 <b><u>ADDITIONAL INFORMATION</u></b>					
Hook Block, Type 80, 5 Sheaves	1,430	650			
Hook Block, Type 50, 3 Sheaves	1,210	550			
Hook Block Type 20, 1 Sheave	770	350			
Spare Wheel 20.50	880	400			
Runner 1.2 m	440	200			
 <b><u>COUNTERWEIGHTS 4 PCS</u></b>					
Removable Slab #1	7,590	3 450			
Removable Slab #2	4,180	1 900			
Removable Slab #3	4,620	2 100			
Removable Slab #4	5,610	2 550			
 <b><u>TRANSPORTATION</u></b>					
Driven year round					
Permits required					

# STERLING CRANE

## Dimensions



( ) with independent rear axle steering

1) optional