



## TRANSPORTATION SPECS - All Terrain Cranes

### LIEBHERR MODEL LTM 1150/1 - 165 TON CAPACITY

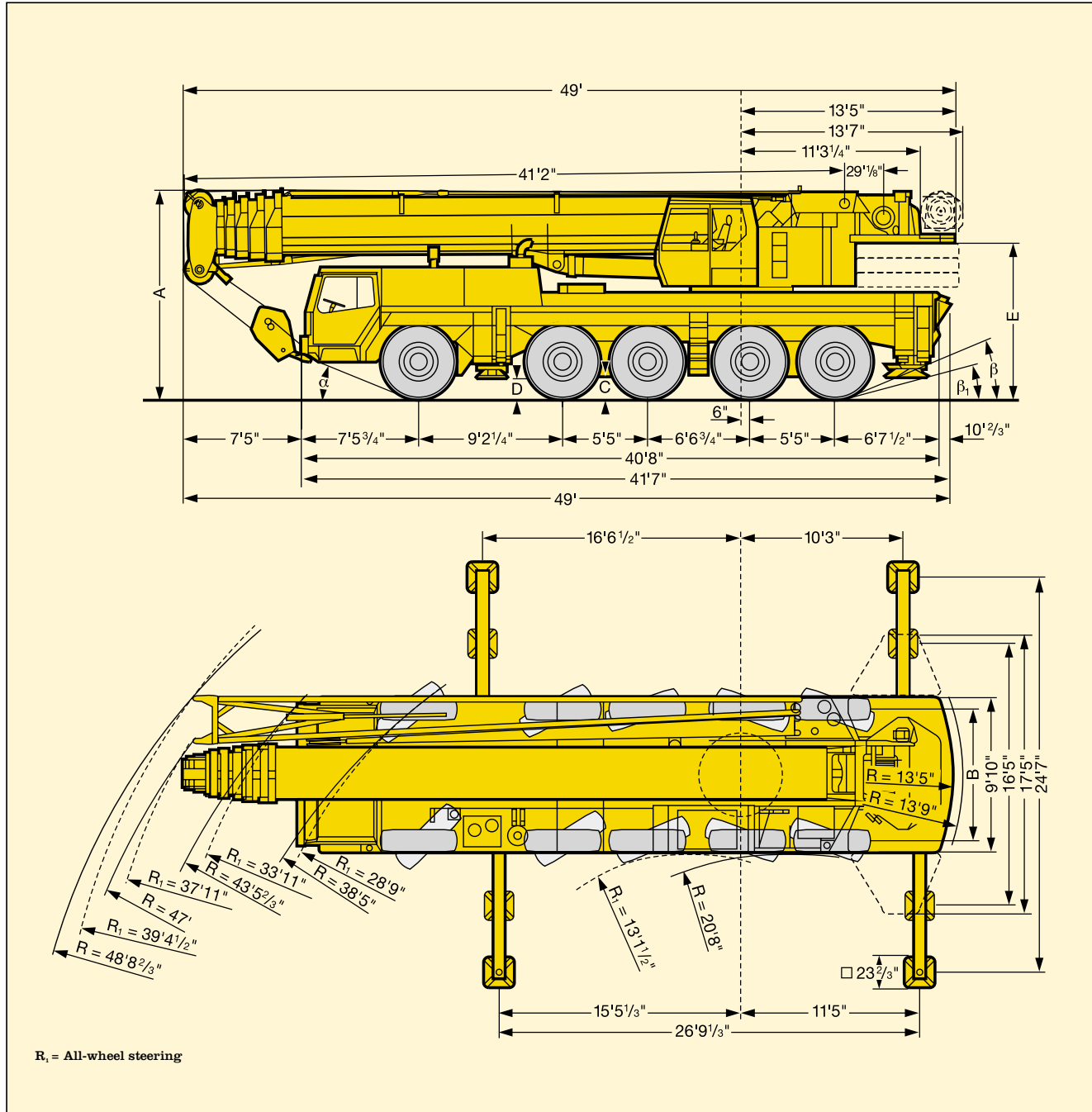
<u>COMPONENT WEIGHTS</u>	<u>LBS.</u>	<u>KGS.</u>	<u>JIB O.D. X 27" X 45"</u>	<u>LBS.</u>	<u>KGS.</u>
Complete Crane (1) (incl. 117.5 block, 25 ton block, jib & max. cwt)	230,930	104 750	Boom Ext. 23'- 27" - 45"	1,278	580
Main Unit c/w Outriggers (2) (Incl. 50 ton block, auxiliary winch, jib & 7 t cwt.)	132,500	60 102			
Counterweight – Minimum	11,023	5 000			
Counterweight – Maximum	110,230	50 000			
<b><u>ADDITIONAL INFORMATION</u></b>					
117.5 Ton Block	2,730	1 238	<b><u>COUNTERWEIGHT</u></b>	<b><u>LBS.</u></b>	<b><u>KGS.</u></b>
58 Ton Block	1,550	703	#1 Removable Slab	11,023	5 000
25 Ton Block	990	449	#2 Removable Slab	4,409	2 000
36' – 92' 3 Stage Jib	5,070	2 300	#3 Removable Slab	17,636	8 000
Spare Tire	828	376	#4 Removable Slab	22,045	10 000
Main Load Line (21mm x 275m)	1,242	563	#5 Removable Base Slab	22,045	10 000
Auxiliary Load Line (21mm x 200m)	905	411	#6 & #7 Removable	33,068	15 000
<b><u>TRANSPORTATION**</u></b>					
Average Driving Speed		45 Km/hr			
<b><u>Alberta and Saskatchewan</u></b>					
	<u>Weight</u>	<u>Trailer</u>			
• Spring*	(2)	Small 64 wh			
• Summer and Winter	Drive	Tandem Dolly			
<b><u>British Columbia</u></b>					
			<b><u>All Provinces / All Seasons</u></b>	<u>No.</u>	<u>Trailer</u>
• Spring (Lower Mainland)	Drive	Tandem Dolly	• 33,068 lb. cwt & misc.	(1)	Tandem
• Summer & Winter	Drive	Tandem Dolly	• 55,113 lb. cwt & misc.	(1)	Tridem
			• 77,158 lb. cwt & misc.	(1)	S/B Train
				or (2)	Tridem
<b><u>Saskatchewan</u></b>					
• Spring*	Drive	Tandem Dolly	• 110,230 lb. cwt & misc.	(1)	S/B Train
• Summer and Winter	Drive	Tandem Dolly		+ (1)	Tridem


\* Restricted travel on some secondary roads.

\*\* Block, ball, counterweight and jib are always removed and hauled separately. Trailer types and numbers dependant on amount of counterweight and/or jib required.

# STERLING CRANE

## Dimensions.



	Dimensions								
	A	A	B	C	D	E	$\alpha$	$\beta$	$\beta_1$
16.00 R 25	13'1 <sup>1</sup> / <sub>2</sub> "	12'7 <sup>1</sup> / <sub>2</sub> "	8'4 <sup>3</sup> / <sub>4</sub> "	18'1 <sup>1</sup> / <sub>2</sub> "	14'9 <sup>1</sup> / <sub>8</sub> "	13'3 <sup>3</sup> / <sub>4</sub> "	23°	23°	15°

\* lowered