



TRANSPORTATION SPECS - Conventional Truck Cranes

LINK-BELT MODEL HC-248H - 200 TON CAPACITY

| <u>COMPONENT WEIGHTS</u> | <u>LBS.</u> | <u>KGS.</u> | <u>BOOM TYPE: TUBULAR 80" X 68"</u> | <u>LBS.</u> | <u>KGS.</u> |
|---|-------------|-------------|---|-------------|-------------|
| Complete Crane C/W 50' Open Throat Full Counterweight, Block & Ball | 234,238 | 106 279 | Open Throat: Min 50' – Max. 280' Note: Boom > 240', No Jib | | |
| House, Butt, Carrier c/w Outriggers | 133,398 | 60 509 | Butt Section 20' Taper Tip 30' | 4,160 | 1 887 |
| House c/w Butt | 39,905 | 18 101 | Insert 10' c/w Pendants | 4,200 | 1 905 |
| Carrier c/w Outriggers | 70,382 | 31 925 | Insert 20' c/w Pendants | 840 | 381 |
| | | | Insert 40' c/w Pendants | 1,680 | 762 |
| | | | | 3,360 | 1 524 |
| <u>ADDITIONAL INFORMATION</u> | | | <u>JIB: TUBULAR 32" X 24"</u> | | |
| 100 Ton Block (5 Sheave) | 2,400 | 1 089 | Min 30' – 100' | | |
| 60 Ton block (3 Sheave) | 1,750 | 794 | Butt, Tip & Mast Section 30' | 1,900 | 862 |
| 19 Ton Ball | 650 | 295 | Insert 10' | 200 | 91 |
| | | | Insert 20' | 400 | 181 |
| Counterweights: Main A | 23,000 | 10 433 | | | |
| B | 19,330 | 8 768 | | | |
| C | 21,110 | 9 571 | | | |
| Counterweights: Bumper A | 13,500 | 6 124 | | | |
| B | 11,500 | 5 216 | | | |
| C (option) | 10,000 | 4 536 | | | |
| Front Outrigger | 11,960 | 5 425 | | | |
| Rear Outrigger | 13,160 | 5 969 | | | |
| Main Load Line 1" x 1,050' | 1,940 | 880 | | | |
| Auxiliary Load Line 1" x 850' | 1,700 | 771 | | | |
| Third Drum 1" x 903' | 1,669 | 757 | | | |
| Boom Hoist Line 7/8" x 715' | 1,015 | 460 | | | |
| 4 – Outrigger Floats / Steel Pads | 660 | 299 | | | |
| Mast, Bridle, Bail & Boom Hoist Rope | 7,614 | 3 454 | | | |
| Tire Size: 14R24 | | | | | |
| <u>TRANSPORTATION</u> | | | | | |
| Maximum Speed: | 60 km/hr | | | | |
| | 37.5 mph | | | | |

Moves in 8 loads with max boom, max jib and full counterweight

Link-Belt leads the way in designing roadable, big capacity truck cranes and nowhere is this more evident than with the HYLAB Series. The weight efficient design and built-in stripdown features of the HC-238H II and HC-248H will get your big capacity crane to the next job site quicker and at less cost.

No helper crane required

The HC-238H II and HC-248H are designed to be self-erecting and self-stripping. The optional 10' extension with lifting sheaves is used to assemble/disassemble, or the live mast can be used as a short boom for loading and handling counterweight, outrigger boxes and boom sections — eliminating the need for a helper crane.



Hydraulic cylinders pull/extend bottom pins and rear outrigger box is simply slipped off of hooks.



The front outrigger box can be easily removed for transport in locations with severe weight restrictions.



cut here .75" →



HC-238H II base machine travels at under 85,000 lbs (38 555 kg) and the HC-248H travels at under 93,000 lbs (42 185 kg).

Exclusive weight transfer option

To optimize axle loadings, a patented weight transfer system flips the mast over the rear of the upper structure, transferring up to 5,466 lbs. (2 479 kg) for the HC-238H II and 9,101 lbs (4 128 kg) for the HC-248H from the rear axle tandem to the front axle tandem to meet the most strict highway laws, making the HYLAB series the most roadable large truck cranes available today.

Air and electrical hook-ups on the rear of the carrier for boom dolly, trailer or tag axle — standard



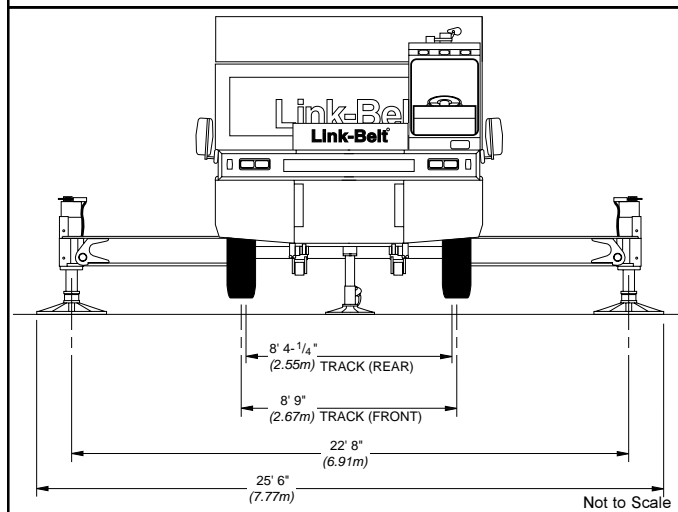
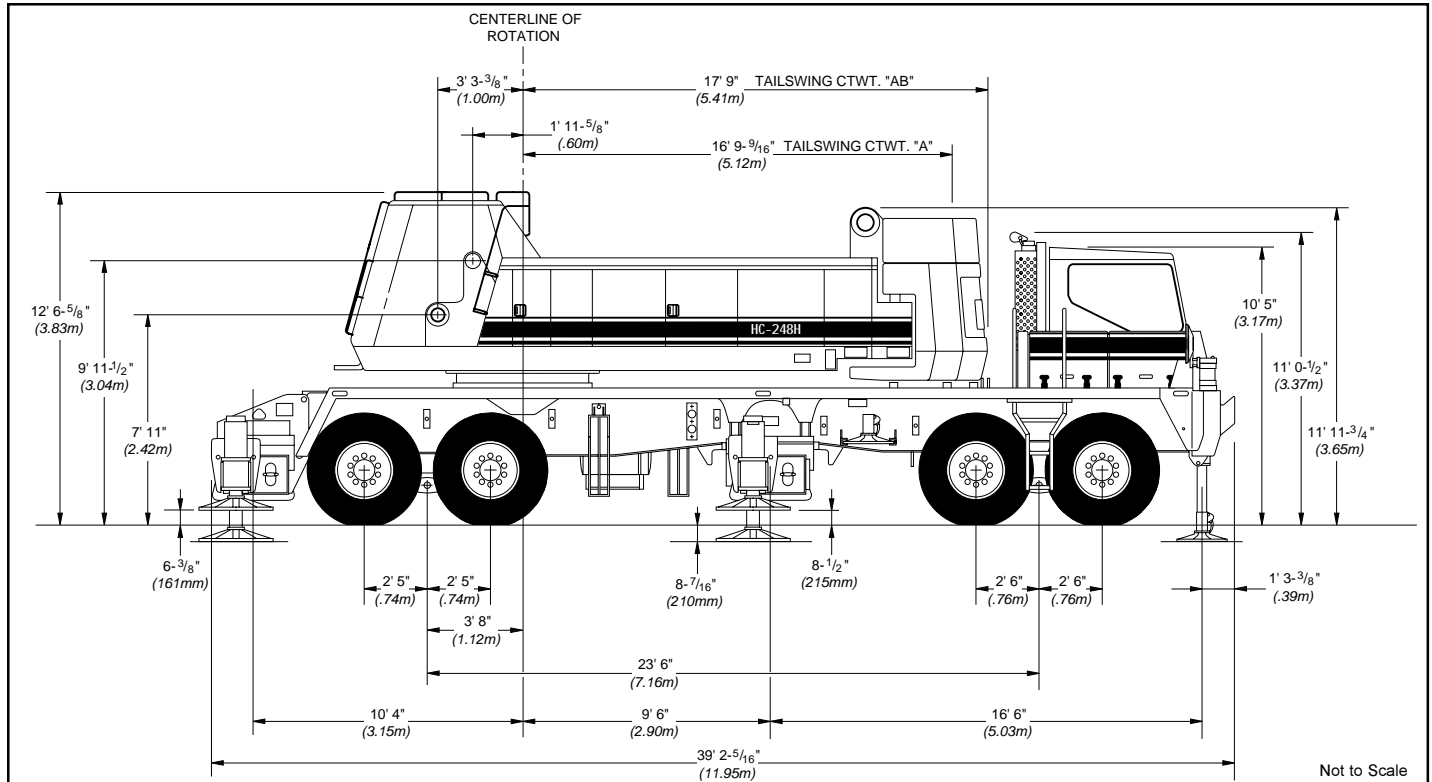
Pusher axle mount option allows more weight to be carried on the machine during transport.



STERLING CRANE

Specifications

Hydraulic Lattice Boom Truck Crane



| General dimensions | Feet | meters |
|---|----------|--------|
| Overall width, outriggers retracted (floats removed) | 11' 0" | 3.35 |
| Minimum ground clearance (at bottom of front bogie beam) | 11" | .28 |
| Ground clearance under counterweight with machine on tires | 5' 8.75" | 1.75 |
| Overall cab width (upper) | 11' 0" | 3.35 |
| Radius of boom hinge pin | 3' 3.4" | 1.00 |
| Vehicle turning diameter - Centerline outside front tire | 106' | 32.30 |
| Vehicle turning diameter - Outside of outer front tire (curb clearance) | 107' 3" | 32.69 |
| Vehicle clearance over front bumper | 111' 8" | 34.03 |
| Vehicle clearance over "A" front bumper ctwt | 113' 2" | 34.49 |
| Vehicle clearance over "AB" front bumper ctwt | 113' 10" | 34.70 |