



## TRANSPORTATION SPECS - Rough Terrain Cranes

### GROVE MODEL RT9130E - 130 TON CAPACITY

#### COMPONENT WEIGHTS

	<u>LBS.</u>	<u>KGS.</u>
Complete Crane (includes block, ball, jib & pads)	174,034	78,941
Main Unit (NO cwt, jib, Aux winch, Outriggers, block & ball)	105,728	47,958

#### ADDITIONAL INFORMATION

Boom	33,500	15,196
130 Ton – 8 Sheave Block	2,400	1,089
80 Ton – 5 Sheave Block	1,600	726
10 Ton – Ball	690	313
Swingaway Jib (36'-59')	3,100	1,406
2 – Jib Extension (26' each)	1,300	590
Rooster Sheave	120	54
Removable Counterweight	40,000	18,144
Outrigger Boxes each	9,421	4,273
Auxiliary Hoist	4,084	1,852

Tire Size 33.25 x 29-38

Main Load Line 3/4" x 950'

Auxiliary Line 3/4" x 700'

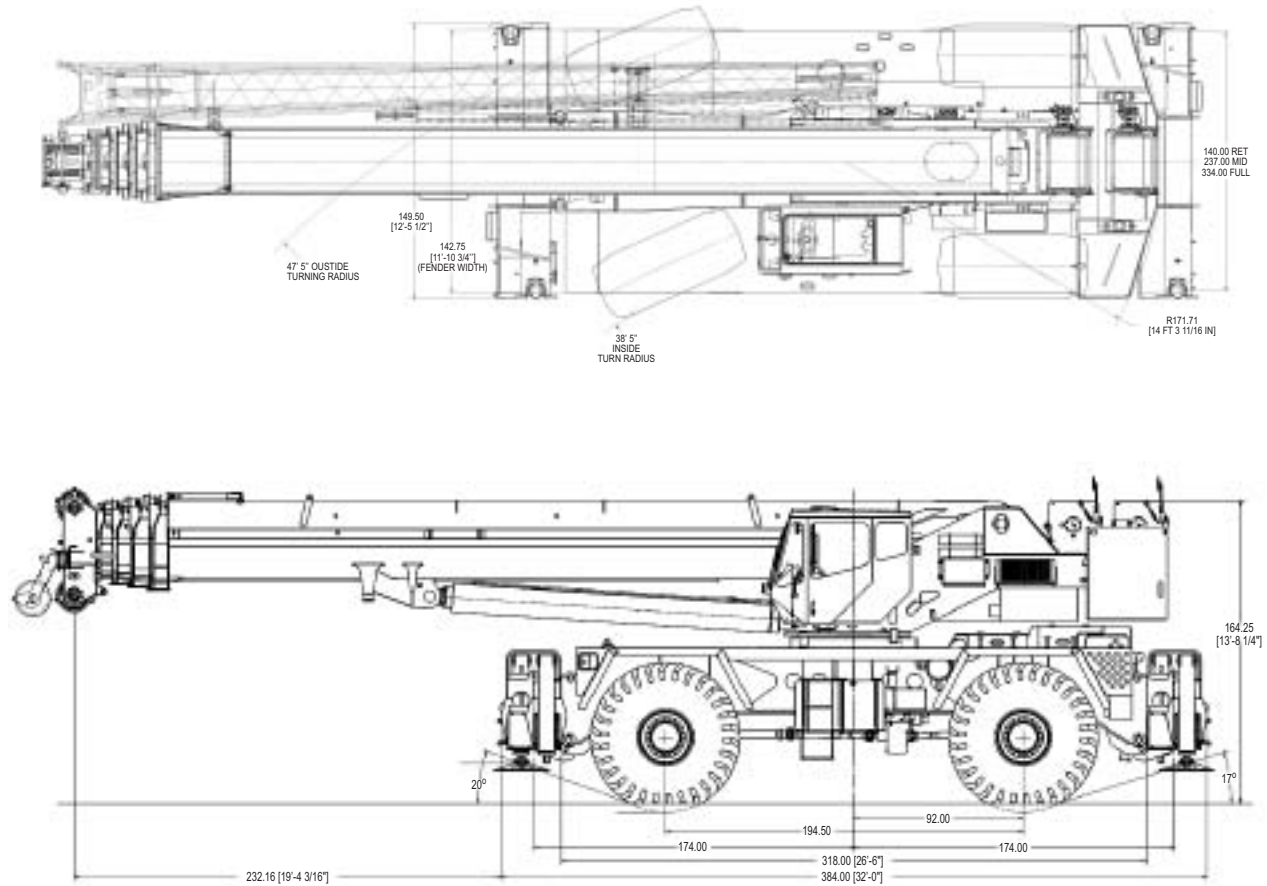
Tire size 33.25 x 29 each	2,380	1,080
---------------------------	-------	-------

#### TRANSPORTATION

This crane requires a reduced weight for transport. In most cases a weight below 110,000lb is economical. This will require tandem loads for the reductions.

# STERLING CRANE

## dimensions



### Weight Configurations

#### RT9130E Basic Machine

Configuration	RT9130E Largest (lbs.)	Items Removed (lbs.)						Weight of Items Removed (lbs.)
		Boxes	STD Cwt	Aux Hoist	Boom	Bifold	Block &/or Ball	
Complete Machine: 2 Hoists w/Rope, MAFX Counterweight, Bifold Extension, Block, Ball, 33.25 x 25 Tires	174,034							
Remove 40K Cwt, Aux Hoist w/Mt & Rope	129,075		40,000	4,084				44,084
Remove 40K Cwt, Aux Hoist w/Mt & Rope, Tires	119,555		40,000	4,084			9,520	53,604
Remove 40K Cwt, Aux Hoist w/Mt & Rope, Bifold, Tires	116,445		40,000	4,084		3,100	9,520	56,714
Remove 40K Cwt, Aux Hoist w/Mt & Rope, O/R Boxes	111,103	18,842	40,000	4,084				62,926
Remove 40K Cwt, Aux Hoist w/Mt & Rope, Bifold, Block, O/R Boxes	106,398	18,842	40,000	4,084		3,100	1,600	67,636
Remove Boom, Bifold, Block, Ball, 40K Cwt, Aux Hoist w/Mt & Rope	91,060		40,000	4,084	33,500	3,100	2,280	82,974
Remove Boom, Bifold, Block, Ball, 40K Cwt, Aux Hoist w/Mt & Rope, Tires	81,540		40,000	4,084	33,500	3,100	2,280	92,494
Remove Boom, Bifold, Block, Ball, 40K Cwt, Aux Hoist w/Mt & Rope, O/R Boxes	72,218	18,842	40,000	4,084	33,500	3,100	2,280	101,816