



TRANSPORTATION SPECS - Rough Terrain Cranes

TADANO MODEL TR-500XL-3 - 50 TON CAPACITY

COMPONENT WEIGHTS

		<u>LBS.</u>	<u>KGS.</u>		
Complete Crane (incl. block, ball & jib)	(1)	88,200	40 018		
Main Unit c/w Outriggers (excl. main winch*, counterweight, block, ball & jib)	(2)	74,450	33 780		
Counterweight		8,820	4 002		
Boom		13,320	6 044		

ADDITIONAL INFORMATION

50 Ton Block, 4 Sheave		950	431		
6.2 Ton Ball		330	150		
2-Stage Jib (32' – 56')		2,200	1 000		
Main Winch c/w Line		1,300	590		
Main Load Line (19mm x 190m)		650	295		
Auxiliary Hoist Line (19mm x 110m)		376	170		

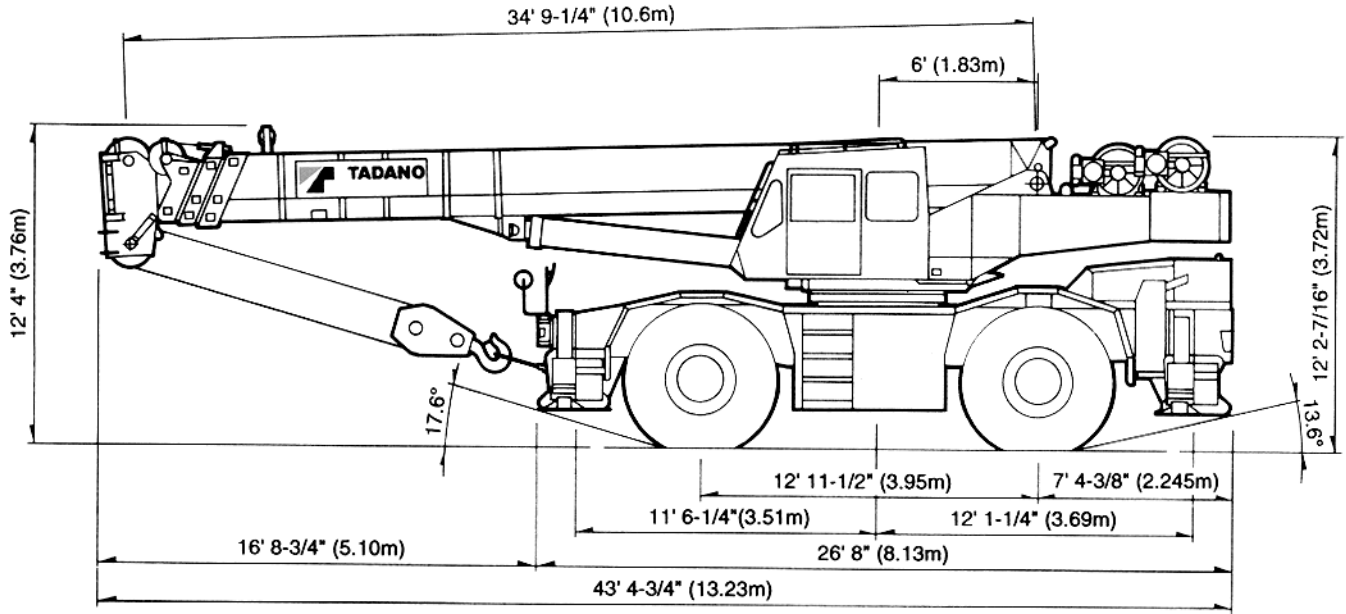
*Main winch is bolted on top of counterweight.

TRANSPORTATION

<u>Alberta</u>	<u>Weight</u>	<u>Trailer</u>	<u>Colorado</u>	<u>Weight</u>	<u>Trailer</u>
Spring	(1)	28 wh	Interstate	(1)	9 axle
Summer	(1)	24 wh			
Fall	(1)	20 wh			
Winter	(1)	16 wh			
<u>British Columbia</u>			<u>Saskatchewan</u>		
Ban Max. 80,000 lb.	(1)	9 axle	Ban	(1)	32 wh / 9 axle
Post Ban	(1)	7 axle	Post Ban	(1)	24 wh / 7 axle
Stay on 85 000 kg corridor					

STERLING CRANE

DIMENSIONS



Note: Dimension is with boom angle at -1.5° .

GENERAL DIMENSIONS (29.5 X 25 Tires)

	Feet	Meters
Turning Radius:		
4 wheel steer	21' 11-3/4"	6.7
2 wheel steer	39' 1/2"	11.9
Tail swing of counterweight	13' 6-1/4"	4.12

