

STERLING CRANE



TRANSPORTATION SPECS - Rough Terrain Cranes

TADANO MODEL TR-600XXL-4 - 60 TON CAPACITY

COMPONENT WEIGHTS

	<u>LBS.</u>	<u>KGS.</u>
Complete Crane (1) (incl. counterweight, block, ball & jib)	95,000	43,917

ADDITIONAL INFORMATION

60 Ton Block (5 Sheave)	1,100	500
6.2Ton Ball	289	131
Two Stage Jib (32.5'-58.1')	2,509	1138
Rooster Sheave	110	50
Main Load Line 3/4"x672'		
Auxiliary Hoist Line 3/4"x380'		

TRANSPORTATION

Alberta and Saskatchewan

	<u>Weight</u>	<u>Trailer</u>
• Spring	(1)	32 wh
• Summer	(1)	24 wh
• Fall	(1)	24 wh
• Winter	(1)	20 wh

British Columbia

	<u>No.</u>	<u>Trailer</u>
• Ban Max. 80,000lb	80,000lb	9 axle
• Post Ban Stay on 85,000kg corridor	(1)	7 axle

Colorado

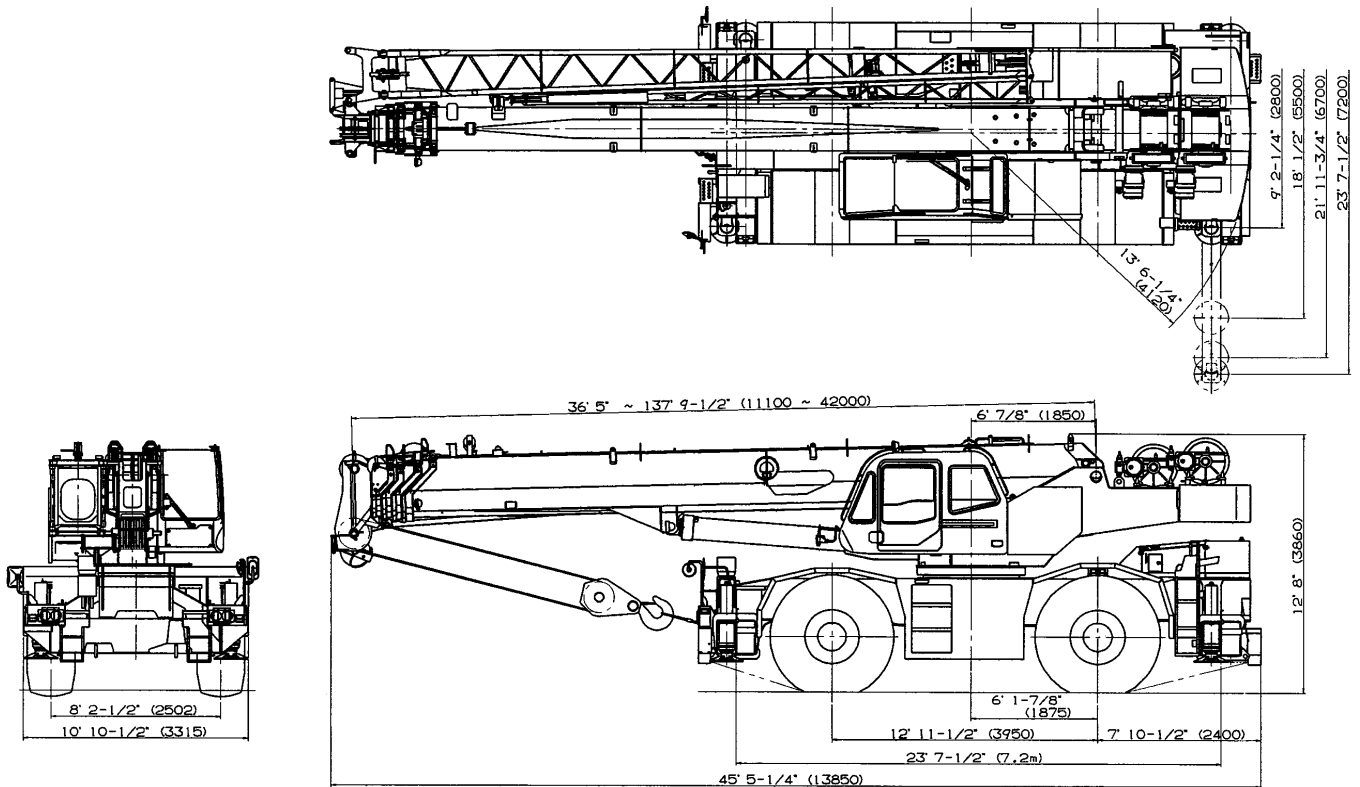
	<u>Weight</u>	<u>Trailer</u>
• Interstate	(1)	9 axle

Saskatchewan

• Ban	(1)	36 wh
• Post Ban	(1)	32 wh

STERLING CRANE

DIMENSIONS



GENERAL DIMENSIONS (29.5 X 25 Tires)

	Feet	Meters
Turning radius		
4 wheel steer	21' 11-3/4"	6.7
2 wheel steer	39' 1/2"	11.9