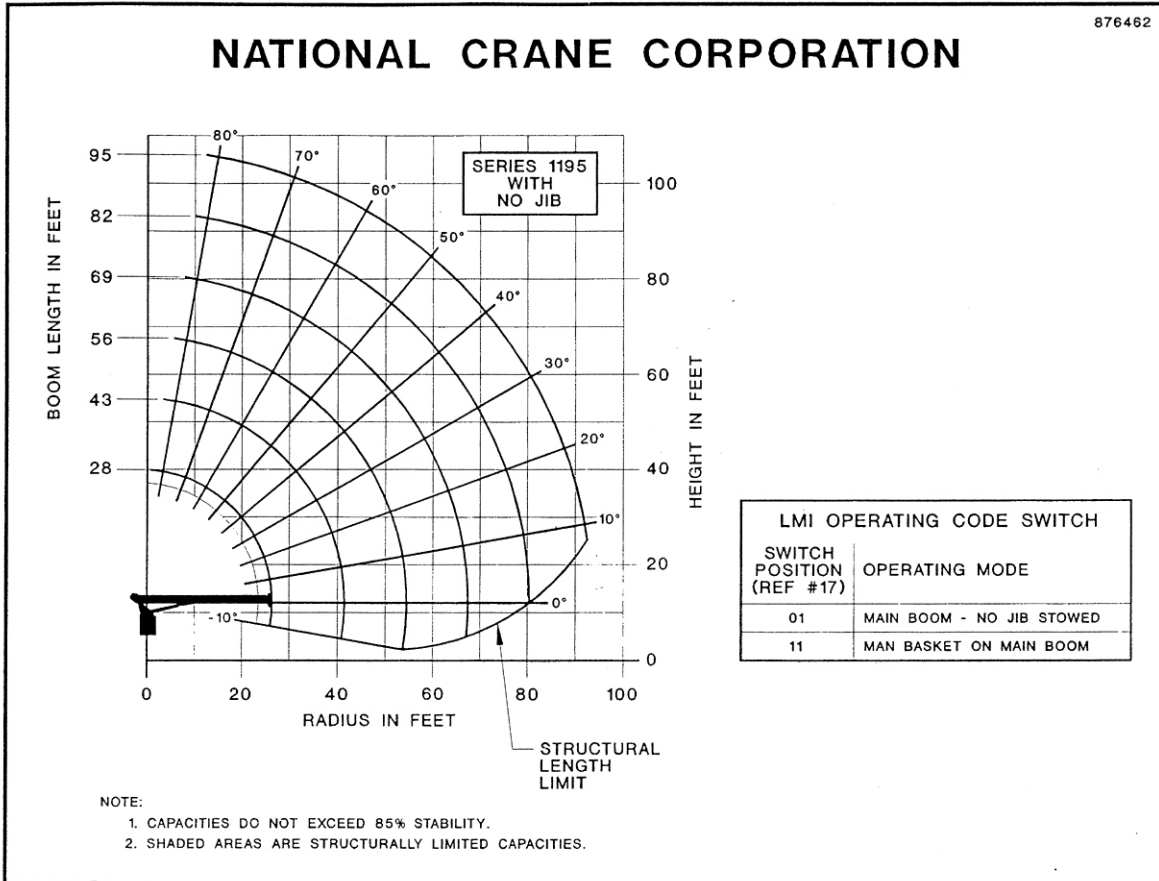


# STERLING CRANE



LIFTING CHARTS - Boom Trucks

NATIONAL MODEL 1195 - 28 TON CAPACITY



LOAD RATINGS											LOADLINE EQUIPMENT DEDUCT			
LOAD RADIUS (FEET)	LOADED BOOM ANGLE	28FT BOOM (LBS)	LOADED BOOM ANGLE	43FT BOOM (LBS)	LOADED BOOM ANGLE	56FT BOOM (LBS)	LOADED BOOM ANGLE	69FT BOOM (LBS)	LOADED BOOM ANGLE	82FT BOOM (LBS)	LOADED BOOM ANGLE	95FT BOOM (LBS)		
5	78.5	83,000												
8	71.5	40,300												
10	67	33,700	76	30,600										
12	62.5	28,900	73.5	26,200	78	24,000								
14	57.5	25,400	70.5	23,000	76	21,000	79	19,000						
16	52	22,400	67.5	20,400	73.5	18,700	77.5	17,000	80	14,500				
20	40	17,700	61.5	16,700	69	15,300	74	13,900	77	12,500	79	10,200		
25	17.5	11,800	53	13,500	63.5	12,400	69.5	11,400	73.5	10,500	76	9,000		
30			43.5	11,000	57.5	10,400	65	9,600	69.5	8,900	73	8,000		
35			32	8,800	50.5	8,800	60	8,200	66	7,500	70	7,000		
40			15.5	6,200	44	7,500	55	7,100	62	6,600	66.5	6,100		
45					35.5	6,100	50	5,950	58	5,850	63	5,300		
50					24.5	4,900	43.5	4,950	53.5	4,750	59.5	4,600		
55							37	4,100	48.5	4,000	56	4,000		
60							28.5	3,350	43.5	3,400	52	3,400		
65							16.5	2,600	37.5	2,800	47.5	2,850		
70									31	2,300	43	2,350		
75									22.5	1,900	38	1,950		
80											32.5	1,550		
85											26	1,250		
90											16.5	950		
	0	6,200	0	2,900	0	1,450	0	650						

DOWNHAUL WEIGHT = 150  
 ONE SHEAVE BLOCK = 200  
 TWO SHEAVE BLOCK = 355  
 THREE SHEAVE BLOCK = 575

1 PART LINE	2 PART LINE	3 PART LINE	4 PART LINE	5 PART LINE	6 PART LINE	7 PART LINE	<b>NOTICE</b>
MAX. PULL 7,700 LBS	MAX. PULL 15,400 LBS	MAX. PULL 23,100 LBS	MAX. PULL 30,800 LBS	MAX. PULL 38,500 LBS	MAX. PULL 46,200 LBS	MAX. PULL 53,900 LBS	<p>DO NOT DEADHEAD LINE BLOCK AGAINST BOOM TIP WHEN EXTENDING BOOM.</p> <p>KEEP AT LEAST 3 WRAPS OF LOADLINE ON DRUM AT ALL TIMES.</p> <p>USE ONLY 9/16" DIAMETER ROTATION RESISTANT CABLE WITH 38,500 LBS BREAKING STRENGTH ON THIS MACHINE.</p> <p>MAXIMUM CAPACITY WITH "BURST OF SPEED" IS 3,000 LBS.</p>

\* 56,000 LBS LOAD REQUIRES OPTIONAL 9/16" DIAMETER 6x25 IWRC CABLE.

# STERLING CRANE

## Boom and Jib Combinations Data

Available in three basic models: 1169 three-section, 1195 four-section and 11105 four-section

**Model 1169** — Equipped with a 27.5 ft - 69 ft (8.38-21.04 m) three-section boom. This model can be equipped with a 27-48 ft (8.23-14.63 m) two-section manual pull-out jib. Maximum tip height w/ 48 ft (14.63 m) jib is 127 ft (38.72 m).

27.5-69 ft (8.38-21.04 m) three-section boom



27.5-69 ft (8.23-21.04 m) three-section boom      11FJ48M      27-48 ft (8.23-14.63 m) manual pull-out jib



**Model 1195** — Equipped with a 28-95 ft (8.53-28.96 m) four-section boom. This model can be equipped with a 25-44 ft (7.62-13.41 m) manual pull-out or a 27-48 ft (8.23-14.63 m) manual pull-out jib. Maximum tip height w/ 44 ft (13.41 m) jib is 147 ft (44.81 m) and 151 ft (46.04m) w/ 48 ft jib.

28-95 ft (8.54-28.96 m) four-section boom



28-95 ft (8.54-28.96 m) four-section boom      11FJ44M      25-44 ft (7.62-13.41 m) manual pull-out jib



28-95 ft (8.54-28.96 m) four-section boom      11FJ48M      27-48 ft (8.23-14.63 m) manual pull-out jib



**Model 11105** — Equipped with a 31 ft to 105 ft (9.44-32.01 m) four-section boom. This model can be equipped with a 25-44 ft (7.62-13.41 m) manual pull-out or a 27-48 ft (8.23-14.63 m) manual pull-out jib. Maximum tip height w/ 44 ft (13.41 m) jib is 157 ft (47.24 m) and 161 ft w/ 48 ft jib.

31-105 ft (9.45-32.01 m) four-section boom



31-105 ft (9.45-32.01 m) four-section boom      11FJ44M      25-44 ft (7.62-13.41 m) manual pull-out jib



31-105 ft (9.45-32.01 m) four-section boom      11FJ48M      27-48 ft (8.23-14.63 m) manual pull-out jib



**Note:** Maximum tip is measured with outriggers/stabilizers fully extended.

## 1100 Winch Data

- All winch pulls and speeds in this chart are shown on the fourth layer
- Winch line pulls would increase on the first, second and third layers
- Winch line speed would decrease on the first, second and third layers
- Winch line pulls may be limited by the winch capacity or the ANSI 5 to 1 cable safety factor (3.5 to 1 for optional 9/16" 6x25 IWRC cable)
- Hook blocks are rated at maximum capacity for the block. **Do not exceed rated cable pull with any block.**

Winch	Cable Supplied	Average Breaking Strength	1 Part Line	2 Part Line	3 Part Line	4 Part Line	5 Part Line	6 Part Line	7 Part Line
			Lift and Speed	Lift and Speed	Lift and Speed	Lift and Speed	Lift and Speed	Lift and Speed	Lift and Speed
Standard Planetary Winch	9/16" Diameter Rotation Resistant 18 x 19 IWRC	38,500 lb (17 463 kg)	7,700 lb (3 492 kg) 164 fpm (50 m/min)	15,400 lb (6 985 kg) 82 fpm (25 m/min)	23,100 lb (10 477 kg) 55fpm (17 m/min)	30,800 lb (13 970 kg) 41 fpm (13 m/min)	38,500 lb (17 463 kg) 33 fpm (10 m/min)	46,200 lb (20 955 kg) 27 fpm (8 m/min)	53,900 lb (24 449 kg)* 23 fpm (7 m/min)
With "Burst-of-Speed"	Same as corresponding cable data shown above		3,000 lb (1 361 kg) 265 fpm (81 m/min)	6,000 lb (2 722 kg) 133 fpm (41 m/min)	9,000 lb (4 082 kg) 88 fpm (27 m/min)	12,000 lb (5 443 kg) 66 fpm (20 m/min)	15,000 lb (6 803 kg) 53 fpm (16 m/min)	18,000 lb (8 164 kg) 44 fpm (13 m/min)	21,000 lb (9 525 kg) 37 fpm (11 m/min)

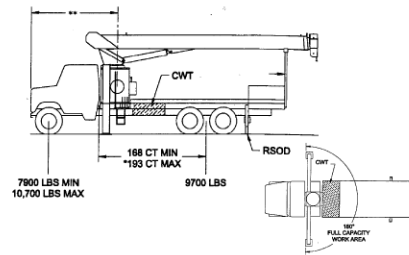
Winch      Bare Drum Pull      Allowable Cable Pull  
With standard rotation resistant rope      10,000 lb (4 536 kg)      7,700 lb (3 493 kg)

Block Type	Rating	Weight
Downhaul Weight	3.85 ton (3.49 t)	150 lb (68 kg)
1 Sheave Block	11.55 ton (10.48 t)	305 lb (138 kg)
2 Sheave Block	19.25 ton (17.46 t)	355 lb (161 kg)
3 Sheave Block	28.0 ton (25.40 t)	690 lb (313 kg)

# STERLING CRANE

## mounting configurations

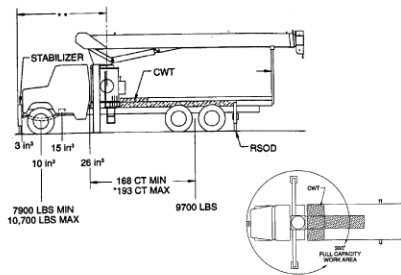
The configurations are based on the Series 1100 with an 85% stability factor. The complete unit must be installed in accordance with factory requirements and a test performed to determine actual stability and counterweight requirements since individual truck chassis vary. Trucks with a frame height in excess of 42 inches (107 cm) after mounting will have a final mounted unit height more than 13' 6" (411.5 cm). Chassis that do not meet these minimum stability weights may require counterweight.



### Configuration 1 - 1105

Working area	180°
Gross Axle Weight Rating Front	18,000 lb (8 165 kg)
Gross Axle Weight Rating Rear	34,000 lb (15 422 kg)
Gross Vehicle Weight Rating	52,000 lb (23 587 kg)
Wheelbase	256 in (650 cm)
Cab to Axle/trunnion (CA/CT)	192 in (488 cm)
Frame Section Modulus (SM) under crane w/110,000 PSI (758 MPa)	15.9 in <sup>3</sup> (261 cm <sup>3</sup> )
Frame Section Modulus (SM) over rear stabilizers w/110,000 PSI (758 MPa)	13.0 in <sup>3</sup> (213 cm <sup>3</sup> )
Stability Weight, Front	7,900 lb (3 583 kg) minimum*
Stability Weight, Rear	9,700 lb (4 400 kg) minimum*
Estimated Average Final Weight	46,300 lb (21 001 kg)

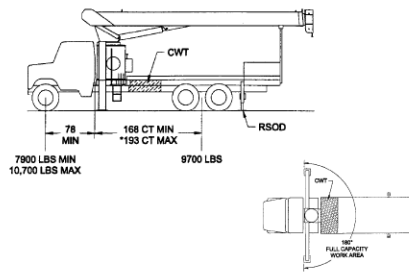
This configuration allows the installation of the Series 1105 by using the subbase for a 22-ft (6.71-m) bed.



### Configuration 2 - 1105 with SFO

Working area	360°
Gross Axle Weight Rating Front	18,000 lb (7 257 kg)
Gross Axle Weight Rating Rear	34,000 lb (15 422 kg)
Gross Vehicle Weight Rating	52,000 lb (23 587 kg)
Wheelbase	256 in (650 cm)
Cab to Axle/trunnion (CA/CT)	192 in (488 cm)
Frame Section Modulus (SM) under crane w/110,000 PSI (758 MPa)	26.0 in <sup>3</sup> (426 cm <sup>3</sup> )
Frame Section Modulus (SM) over rear stabilizers w/110,000 PSI (758 MPa)	15.0 in <sup>3</sup> (245 cm <sup>3</sup> )
Stability Weight, Front	7,900 lb (3 583 kg) minimum*
Stability Weight, Rear	9,700 lb (4 400 kg) minimum*
Estimated Average Final Weight	46,300 lb (21 001 kg)

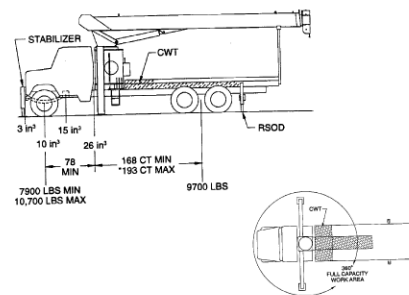
This mount requires front stabilizer for full capacity 360° around the truck. Front stabilizer gives the machine a solid base, helping the operator control loads precisely. This configuration requires a 22-ft (6.71-m) bed.



### Configuration 3 - 1195 / 1169

Working area	180°
Gross Axle Weight Rating Front	18,000 lb (8 165 kg)
Gross Axle Weight Rating Rear	34,000 lb (15 422 kg)
Gross Vehicle Weight Rating	52,000 lb (23 587 kg)
Wheelbase	246 in (625 cm)
Cab to Axle/trunnion (CA/CT)	168 in (427 cm)
Frame Section Modulus (SM) under crane w/110,000 PSI (758 MPa)	15.9 in <sup>3</sup> (261 cm <sup>3</sup> )
Frame Section Modulus (SM) over rear stabilizers w/110,000 PSI (758 MPa)	13.0 in <sup>3</sup> (213 cm <sup>3</sup> )
Stability Weight, Front	7,900 lb (3 583 kg) minimum*
Stability Weight, Rear	9,700 lb (4 400 kg) minimum*
Estimated Average Final Weight	44,800 lb (20 321 kg)

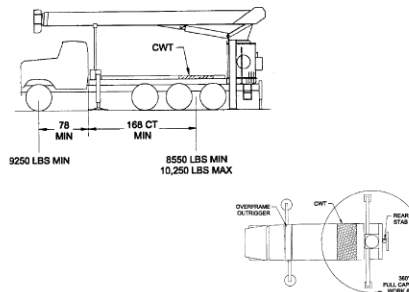
This configuration allows the installation of the Series 1195 or 1169 on a chassis with a small frame by using a subbase for a 20-ft (6.10-m) bed or a different subbase for a 22-ft (6.71-m) bed.



### Configuration 4 - 1195 / 1169 with SFO

Working area	360°
Gross Axle Weight Rating Front	18,000 lb (8 165 kg)
Gross Axle Weight Rating Rear	34,000 lb (15 422 kg)
Gross Vehicle Weight Rating	52,000 lb (23 587 kg)
Wheelbase	246 in (625 cm)
Cab to Axle/trunnion (CA/CT)	168 in (427 cm)
Frame Section Modulus (SM) under crane w/110,000 PSI (758 MPa)	26.0 in <sup>3</sup> (426 cm <sup>3</sup> )
Frame Section Modulus (SM) over rear stabilizers w/110,000 PSI (758 MPa)	13.0 in <sup>3</sup> (213 cm <sup>3</sup> )
Stability Weight, Front	7,900 lb (3 583 kg) minimum*
Stability Weight, Rear	9,700 lb (4 400 kg) minimum*
Estimated Average Final Weight	44,800 lb (20 321 kg)

This configuration allows the installation of the 1195 or 1169 on a chassis by using a subbase for a 20-ft (6.10 m) bed or a different subbase for a 22-ft (6.71-m) bed. This mount requires front stabilizer for full capacity 360° around the truck. Front stabilizer gives the machine a solid base, helping the operator control loads.



### Configuration 5 - Rear Mount

Working area	360°
Gross Axle Weight Rating Front	16,000 lb (7 257 kg)
Gross Axle Weight Rating Rear	40,000 lb (18 143 kg)
Gross Vehicle Weight Rating	56,000 lb (25 401 kg)
Wheelbase	246 in (625 cm)
Cab to Axle/trunnion (CA/CT)	168 in (427 cm)
Frame Section Modulus (SM) under crane w/110,000 PSI (758 MPa)	15.9 in <sup>3</sup> (261 cm <sup>3</sup> )
Frame Section Modulus (SM) over rear stabilizers w/110,000 PSI (758 MPa)	15.9 in <sup>3</sup> (261 cm <sup>3</sup> )
Stability Weight, Front	9,250 lb (4 196 kg) minimum*
Stability Weight, Rear	8,550 lb (3 878 kg) minimum*
Estimated Average Final Weight	48,000 lb (21 772 kg)

This configuration allows the rear-mount installation of the Series 1100. This configuration is 360° stable and allows the effective use of close working area to lift the heavier capacity loads. maximum bed length is 16 ft (4.87 m).

### Notes:

- Gross Vehicle Weight rating (GVWR) is dependent on all components of the vehicle (axles, tires, springs, frame, etc.) meeting manufacturers' recommendations; always specify GVWR when purchasing trucks
- Diesel engines require a variable speed governor and energize-to-run fuel solenoid for smooth crane operation; electronic fuel injection requires EET engine remote throttle

- All mounting data is based on a National Series 1100 with an 85 percent stability factor
- The complete unit must be installed in accordance with factory requirements, and a test performed to determine actual stability and counterweight requirements per SAE J765; contact the factory for details
- Transmission neutral safety interlock switch is required with optional remote control

\*Estimated axle scale weights prior to installation of crane, stabilizers and subbase for 85% stability.

\*\*If the distance from the front bumper (SFO) to center of rotation exceeds 144 inches (366 cm), the 40-ft (12.19 m) overall truck length restriction will be exceeded. Overall length restrictions vary from state to state. In some states it is legal to be more than 40 ft (12.18 m) length, and some states allow overlength permits.

## accessories

### Radio Remote Controls –

Eliminate the handling and maintenance concerns that accompany cabled remotes. Operate to a range of about 250 feet (76 m), varying with conditions.

- **Model NB4R**

### One-Person Basket –

Strong but lightweight steel basket with 300-lb (139-kg) capacity, gravity hung with swing lock and full body harness.

- **Model B1-S**
- **Model 2B1-S** (for dual locking baskets)

### Heavy-duty Personnel Basket –

1,200-lb. (544-kg) capacity steel basket with safety loops for four passengers. Gravity leveling 72- x 42-inch (183- x 107-cm) platform. Fast attachment and secure locking systems. Load chart must show 2,300 lb. (1 043 kg) minimum to operate this accessory.

- **Model BSA-1**
- **Model BSA-R1** (provides rotation)

### Hydraulic Oil Cooler –

Automatic, self-contained radiator system with electric fans cools oil under continuous operation.

- **Model OC**

### Continuous Rotation –

Allows rotation of turret/boom without rotation stop.

- **Model CR**

## Dimensions Specifications

Mount	Series	G in (mm)	DRY WEIGHT lb (kg)	WITH OIL/WT lb (kg)
Std	1169	96 (2438)	19600 (8890)	20400 (9253)
Rear	1169	114 (2896)	23150 (10500)	23950 (10864)
Std	1195	98 (2489)	20800 (9434)	21600 (9798)
Rear	1195	117 (2972)	24350 (11045)	25150 (11408)
Std	11105	100 (2540)	21640 (9816)	22480 (10197)
Rear	11105	119 (3023)	25190 (11426)	25990 (11789)

\*Weight includes all items except RSOD (1400 lbs.). Boom fully retracted

\*\*Weight includes all items including complete HO and SRO. Boom fully retracted.

