

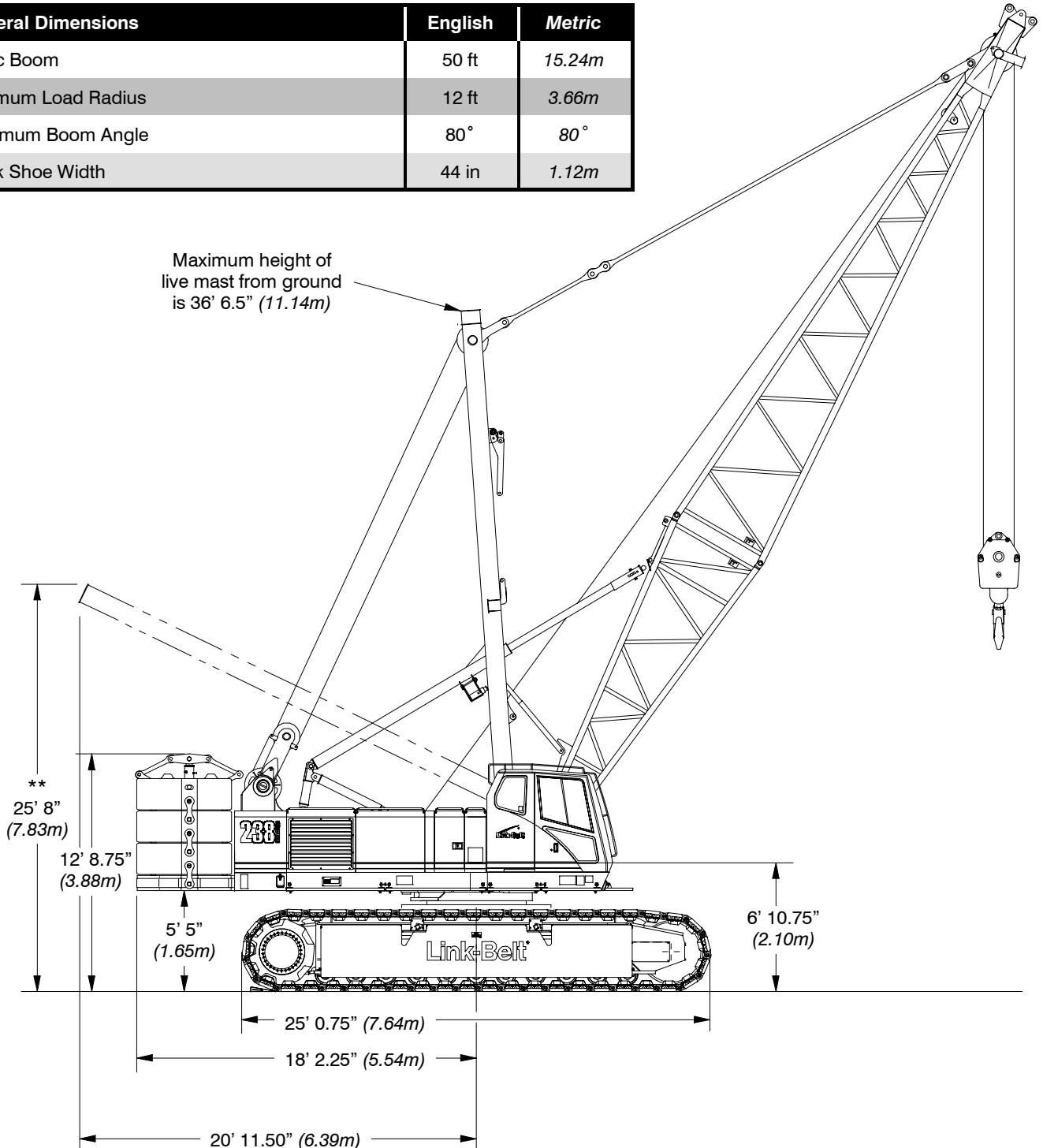


LIFTING CHARTS - Crawler Cranes

LINK-BELT MODEL 238H5 - 150 TON CAPACITY

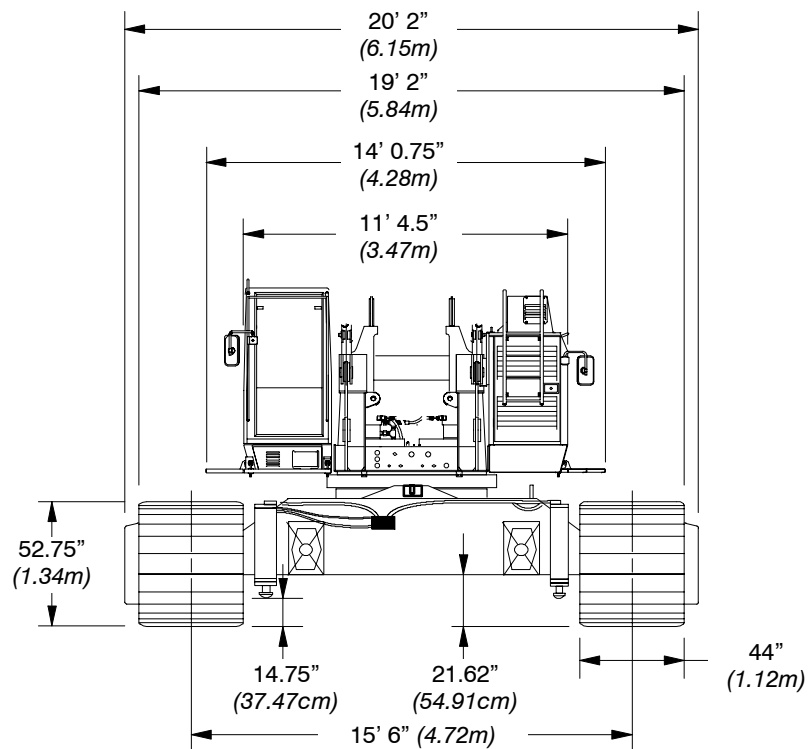
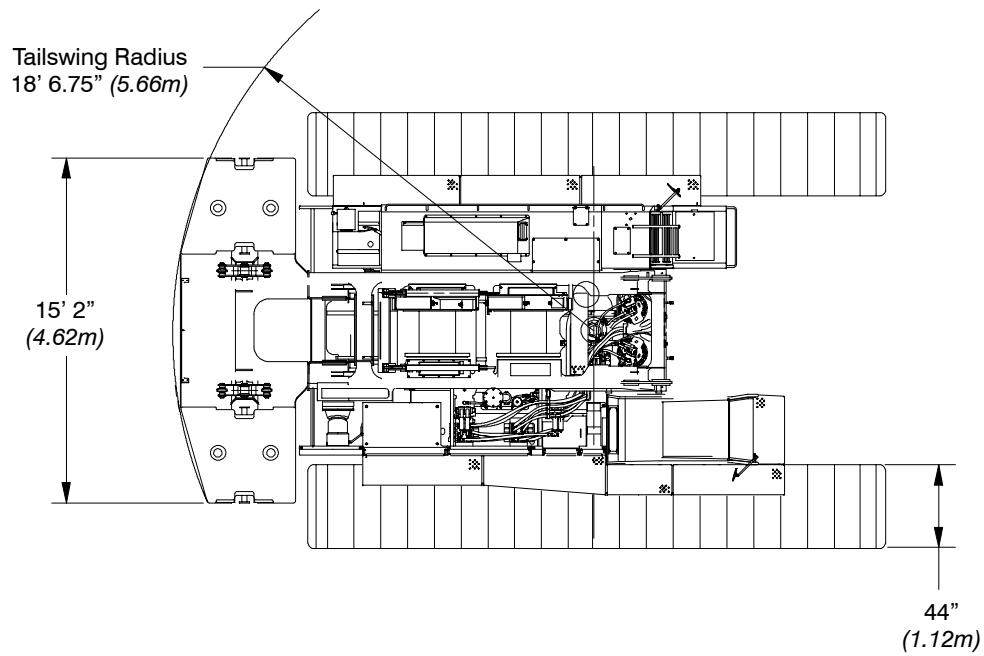
Dimensions

General Dimensions	English	Metric
Basic Boom	50 ft	15.24m
Minimum Load Radius	12 ft	3.66m
Maximum Boom Angle	80°	80°
Track Shoe Width	44 in	1.12m



Note: ** @ Maximum boom angle (80°) with maximum boom [260 ft (79.25m)], maximum rotation radius occurs.

STERLING CRANE



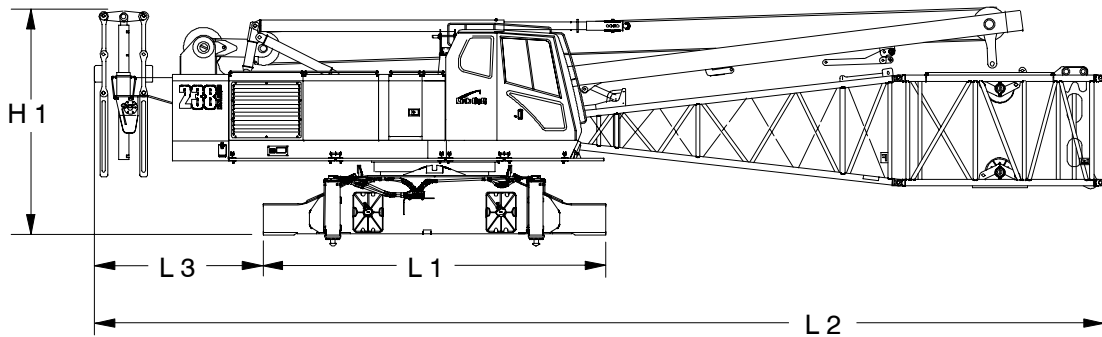
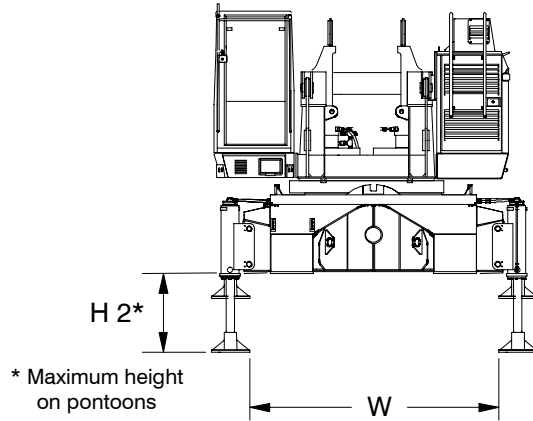
Ground clearance from jacks – 14.75 in (37.47cm)
 Ground clearance from frame – 21.62 in (54.91cm)

STERLING CRANE

Base Crane

Base Crane ①

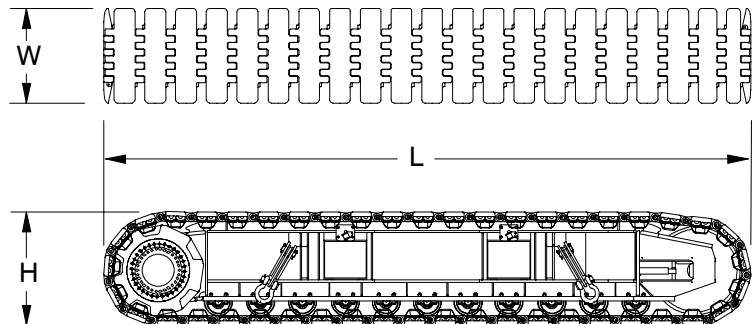
Length 1	16 ft 11.50 in	(5.17m)
Length 2	49 ft 11.25 in	(15.22m)
Length 3	8 ft 4 in	(2.54m)
Width	9 ft 1.50 in	(2.78m)
Height 1	11 ft 3 in	(3.43m)
Height 2	37.50 in	(0.95m)
Weight	71,097 lb	(32 250kg)



Side Frames

Side Frames ②

Length	25 ft 0.75 in	(7.64m)
Width	44 in	(1.12m)
Height	52.75 in	(1.34m)
Weight	34,649 lb	(15 717kg)



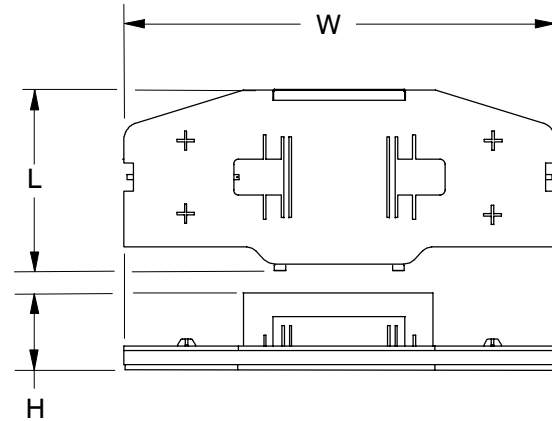
Number inside black circle "①" = # of components

STERLING CRANE

Upper Counterweights

"A" Slab Counterweight ①

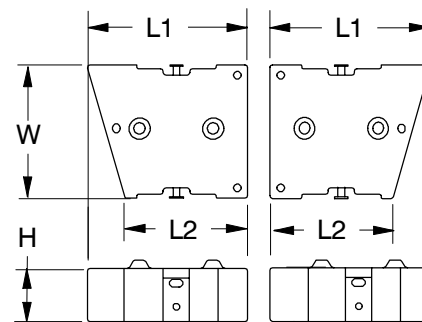
Length	5 ft 9.50 in	(1.77m)
Width	15 ft 2 in	(4.62m)
Height	32.25 in	(0.82m)
Weight	14,000 lb	(6 350kg)



"A", "B", and "C"

Wing Counterweights ⑥

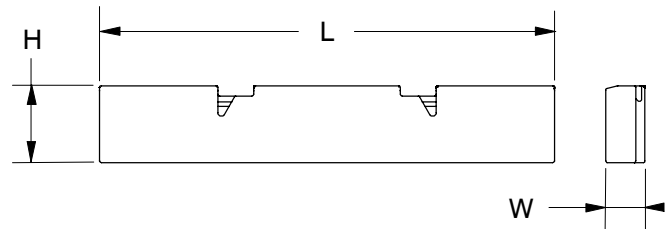
Length 1	61 in	(1.55m)
Length 2	46.50 in	(1.18m)
Width	50.75 in	(1.29m)
Height	20.25 in	(51.44cm)
Weight	13,000 lb	(5 897kg)



Lower Counterweights

Side Frame Counterweights ②

Length	16 ft 8 in	(5.08m)
Width	17.50 in	(44.45cm)
Height	33.75 in	(0.86m)
Weight	24,000 lb	(10 886kg)



Number inside black circle "①" = # of components

Boom/Luffing Boom

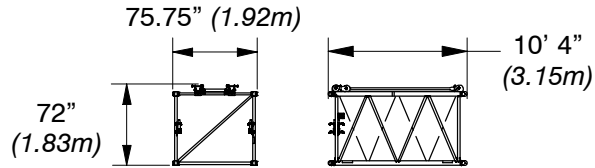
70 in (1.78m) x 62 in (1.57m)

Boom/Luffing Boom Extensions

Weights Include Pendants and Hardware

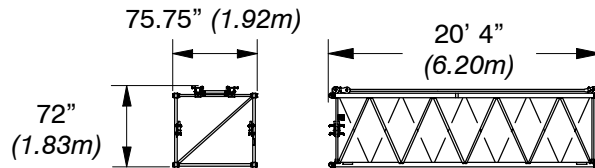
10 ft (3.05m) Extension

Weight: 1,056 lb (479kg)



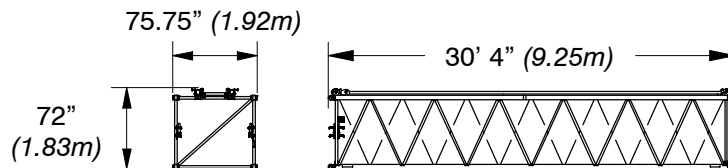
20 ft (6.10m) Extension

Weight: 1,778 lb (807kg)



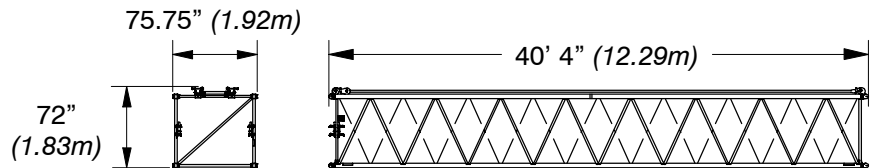
30 ft (9.14m) Extension

Weight: 2,482 lb (1 126kg)



40 ft (12.19m) Extension

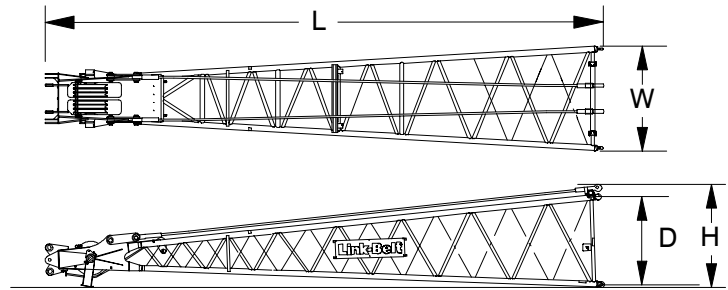
Weight: 3,177 lb (1 441kg)



STERLING CRANE

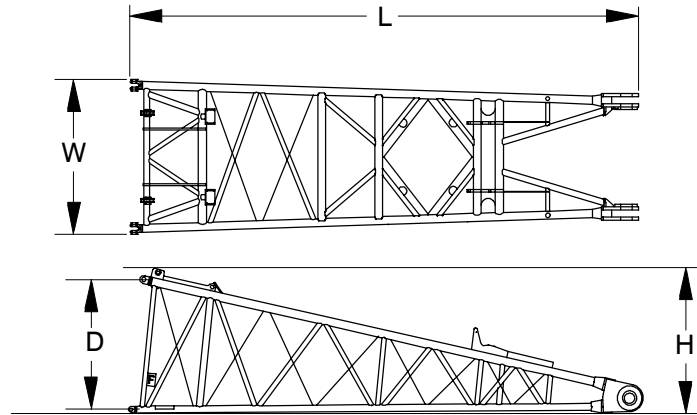
30 ft (9.14m) Boom Top Section ①

Length	32 ft 10 in	(10.01m)
Width	75.75 in	(1.92m)
Deep	62 in	(1.57m)
Height	75 in	(1.91m)
Weight	4,148 lb	(1 882kg)



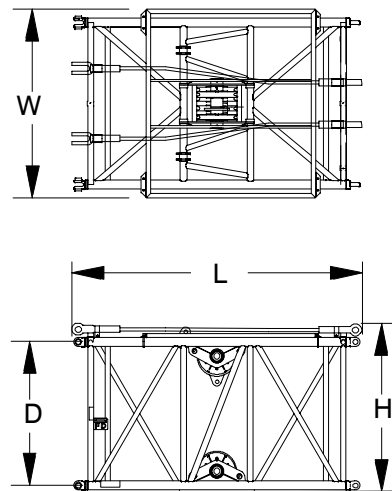
20 ft (6.10m) Boom Base Section ①

Length	20 ft 8 in	(6.30m)
Width	75.75 in	(1.92m)
Deep	62 in	(1.57m)
Height	69 in	(1.75m)
Weight	3,350 lb	(1 520kg)



10 ft (3.05m) Self Assembly Section* ①

Length	10 ft 4 in	(3.15m)
Width	81.50	(2.07m)
Deep	70.00	(1.78m)
Height	73.25	(1.86m)
Weight	2,717 lb	(828kg)



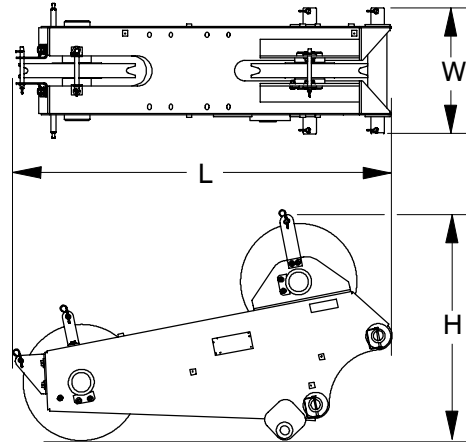
Number inside black circle "①" = # of components

* - Optional equipment

STERLING CRANE

5 ft (1.52m) Auxiliary Tip Extension* ①

Length	70.35 in	(1.79m)
Width	24.50 in	(0.62m)
Height	42.91 in	(1.09m)
Weight	671 lb	(304kg)

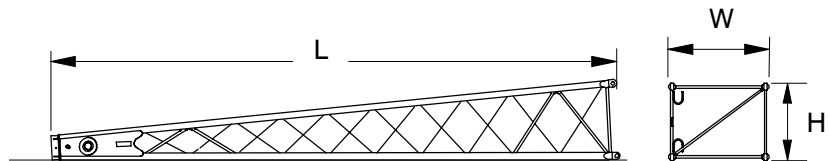


Jib/Luffing Jib

15 ft (4.57m) Jib Top Section* ①

Length	16 ft 1.50 in	(4.91m)
Width	34.50 in	(0.88m)
Height	26.50 in	(0.67m)
Weight†	604 lb	(274kg)

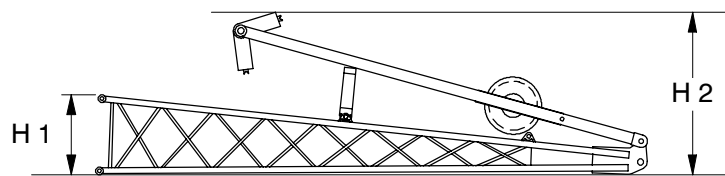
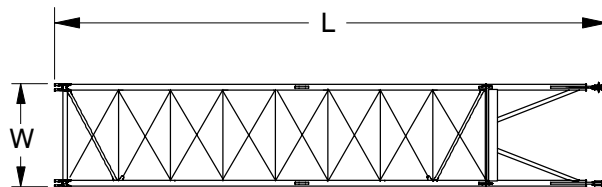
† Weight includes pendants and hardware.



15 ft (4.57m) Jib Base Section* ①

Length	15 ft 3.50 in	(4.66m)
Width	34.50 in	(0.88m)
Height 1	26.50 in	(0.67m)
Height 2	54.50 in	(1.38m)
Weight†	1,106 lb	(502kg)

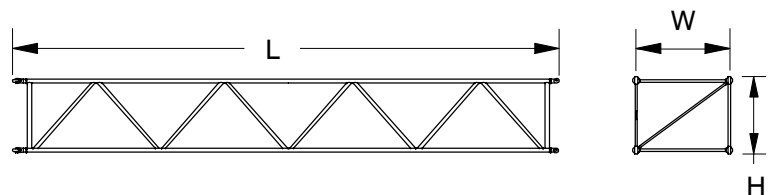
† Weight includes pins, basic frontstay & backstay pendants, and hardware.



15 ft (4.57m) Jib Extension* ①

Length	15 ft 2.50 in	(4.64m)
Width	34.50 in	(0.88m)
Height	26.50 in	(0.67m)
Weight†	330 lb	(150kg)

† Weights includes pins, pendants, and hardware.



Number inside black circle "①" = # of components

* - Optional equipment

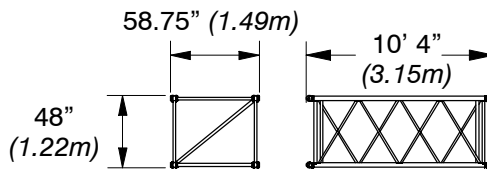
STERLING CRANE

Luffing Jib Extensions*

Weights Include Pendants and Hardware

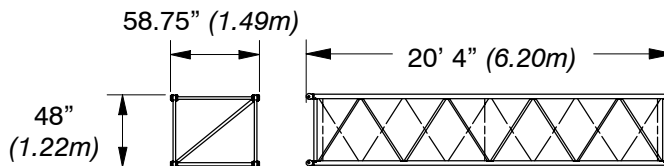
10 ft (3.05m) Extension

Weight: 550 lb (249kg)



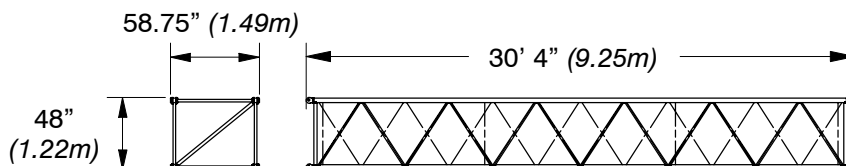
20 ft (6.10m) Extension

Weight: 1,100 lb (499kg)



30 ft (9.14m) Extension

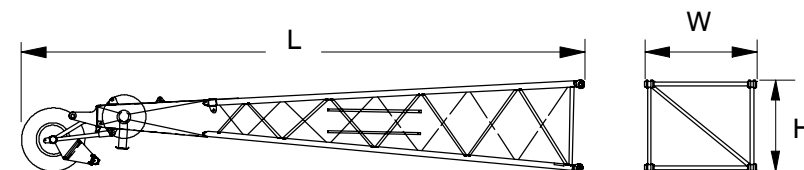
Weight: 1,650 lb (748kg)



15 ft (4.57m) Luffing Jib Top Section* ①

Length	24 ft 8.25 in	(7.52m)
Width	58.75 in	(1.49m)
Height	48 in	(1.22m)
Weight†	2,800 lb	(1 270kg)

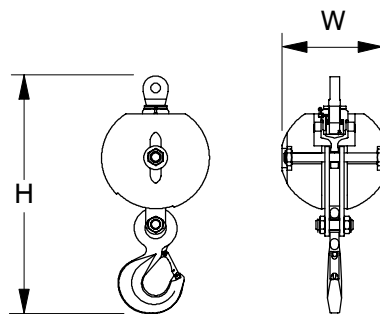
† Weight includes pendants and hardware.



Hook Balls

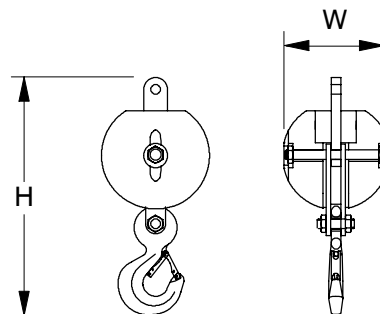
15 Ton (13.6mt) Swivel Hook Ball* ①

Width	17.50 in	(0.44m)
Height	40.50 in	(1.03m)
Weight	767 lb	(348kg)



15 Ton (13.6mt) Non-Swivel Hook Ball* ①

Width	18 in	(0.46m)
Height	39.50 in	(1.00m)
Weight	748 lb	(339kg)



Number inside black circle "①" = # of components

* - Optional equipment

STERLING CRANE

Hook Blocks

25 Ton (22.7mt)

2–Sheave Hook Block* ①

Width1	12.50 in	(0.32m)
Width2	22.75 in	(0.58m)
Width3	11.00 in	(0.28m)
Height	40.50 in	(1.03m)
Weight	466 lb	(211kg)

40 Ton (36.3mt)

2–Sheave Hook Block* ①

Width1	17.25 in	(0.44m)
Width2	24.75 in	(0.63m)
Width3	15.00 in	(0.38m)
Height	51.50 in	(1.31m)
Weight	1,395 lb	(633kg)

60 Ton (54.4mt)

2–Sheave Hook Block* ①

Width1	16.25 in	(0.41m)
Width2	22.00 in	(0.56m)
Width3	19.50 in	(0.50m)
Height	57.00 in	(1.45m)
Weight	1,400 lb	(635kg)

125 Ton (113.4mt)

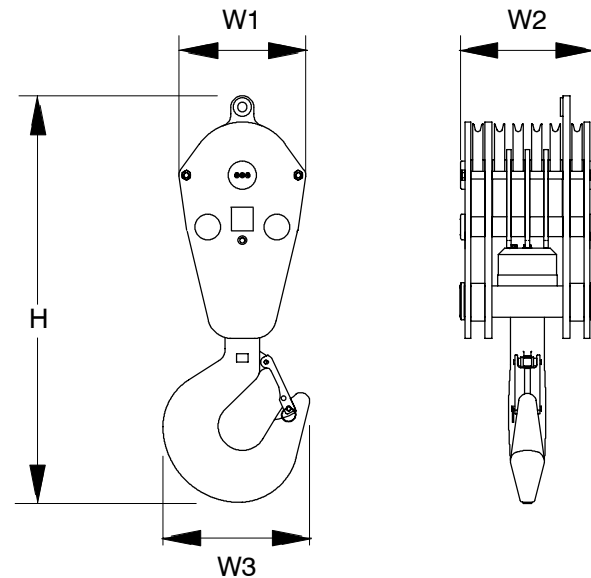
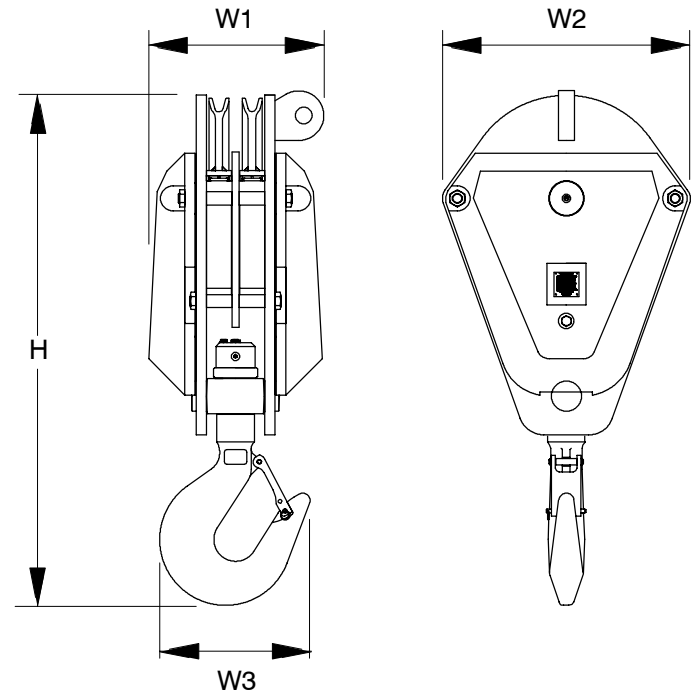
6–Sheave Hook Block* ①

Width1	22.50 in	(0.57m)
Width2	23.50 in	(0.60m)
Width3	26.00 in	(0.66m)
Height	72.00 in	(1.83m)
Weight	2,580 lb	(1 170kg)

140 Ton (127.0mt)

6–Sheave Hook Block* ①

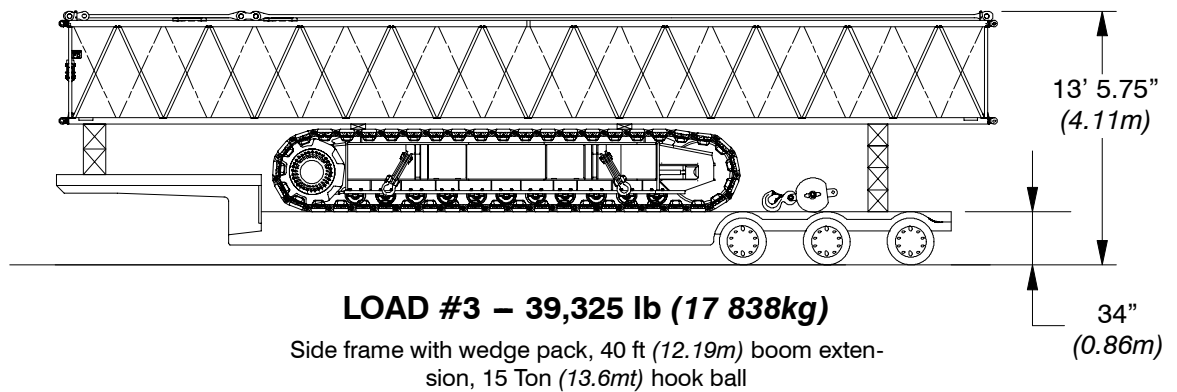
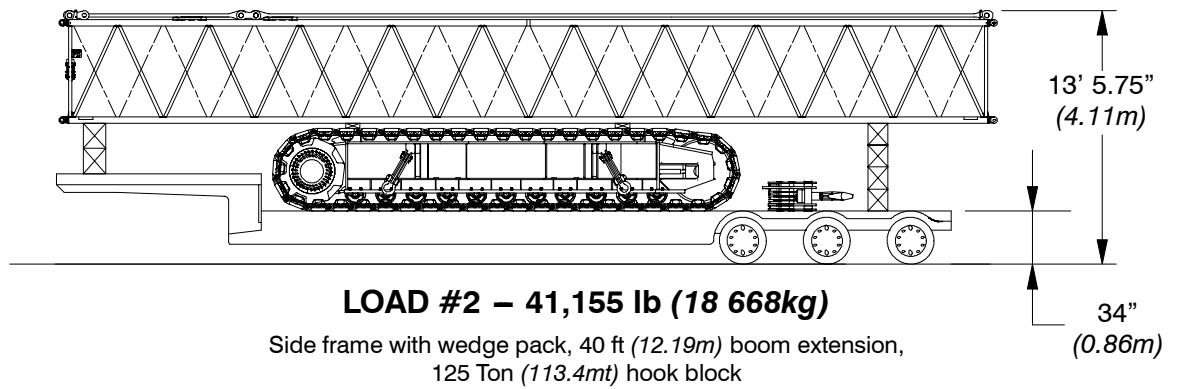
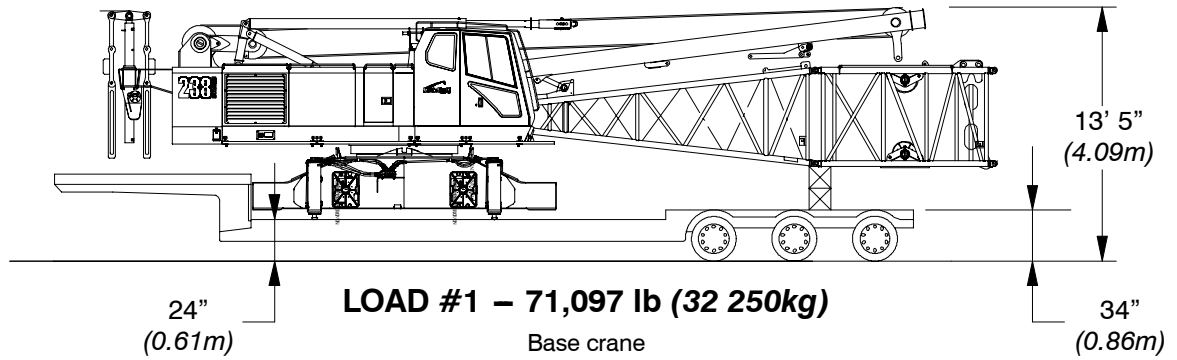
Width1	22.25 in	(0.57m)
Width2	23.25 in	(0.59m)
Width3	26.00 in	(0.66m)
Height	72.25 in	(1.83m)
Weight	2,340 lb	(1 061kg)



Number inside black circle “①” = # of components

* – Optional equipment

Transport Drawings



STERLING CRANE

