


STERLING CRANE



LIFTING CHARTS - All Terrain Cranes

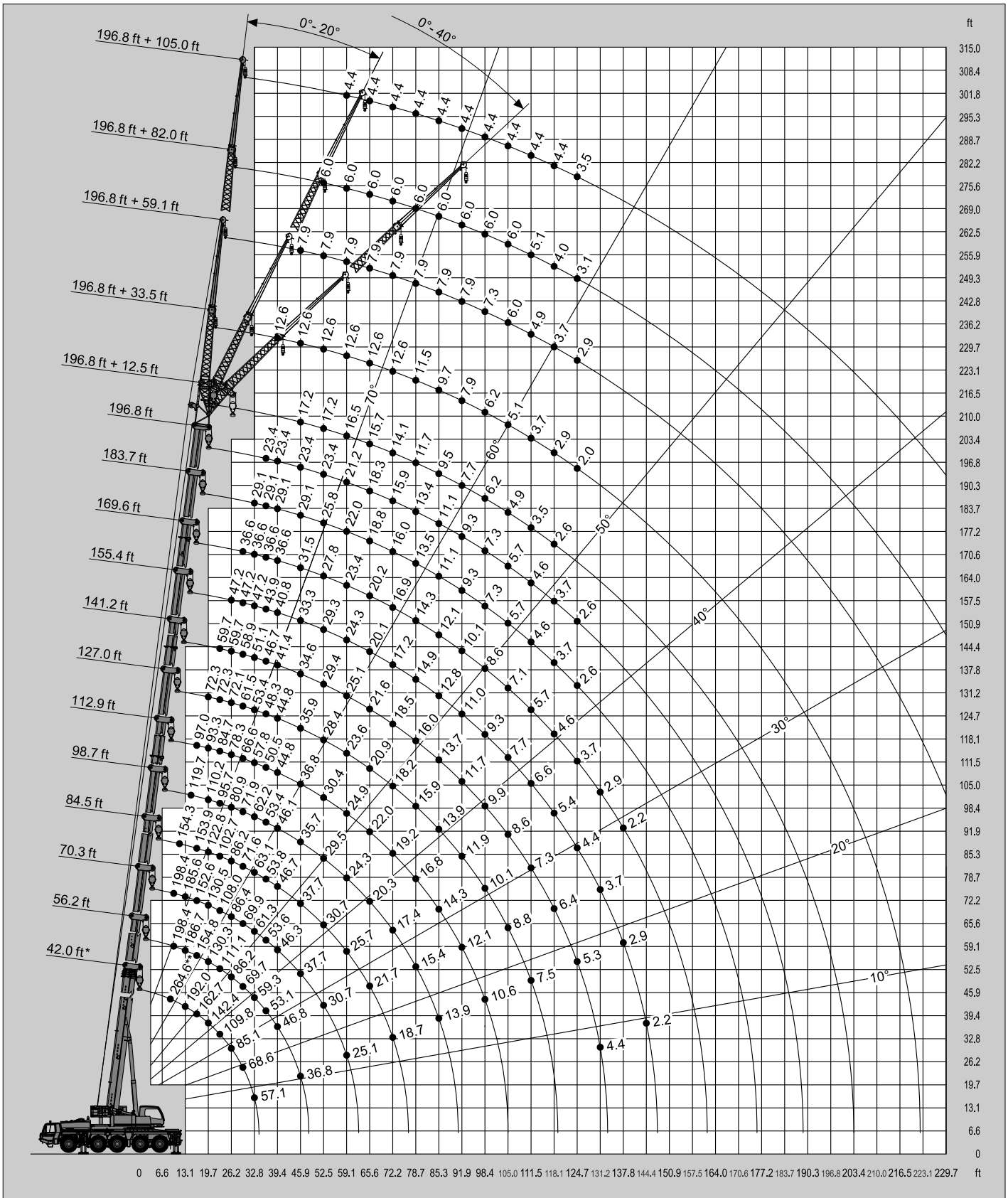
TADANO MODEL ATF% \$; !) - 1*\$ TON CAPACITY





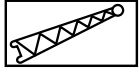
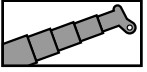


SAE



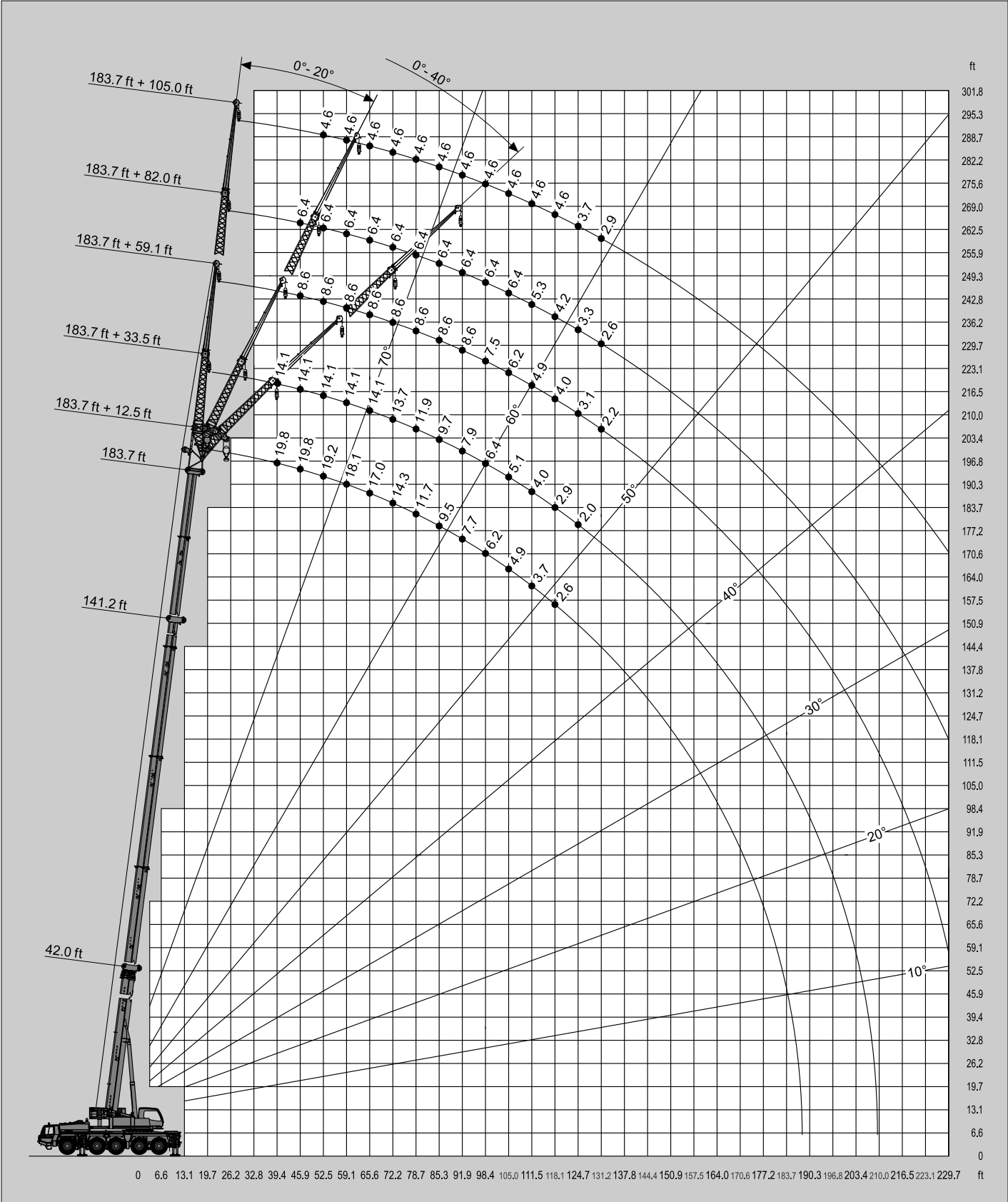
* Over rear / * Sobre la parte trasera
 ** With additional lifting equipment / ** Con equipo adicional

STERLING CRANE



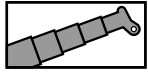
27,558 lbs

SAE



STERLING CRANE

Lifting capacities / Capacidades de elevación

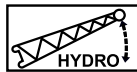
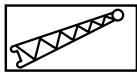
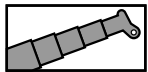


27,558 lbs

SAE

ft	42.0 ft*	42.0 ft	56.2 ft	70.3 ft	84.5 ft	98.7 ft	112.9 ft	127.0 ft	141.2 ft	155.4 ft	169.6 ft	183.7 ft	196.8 ft
8.9	264.6**												
9.8	235.7**												
11.5	212.5	225.1**	198.4	198.4									
13.1	192.0	187.0	186.7	185.6	154.3								
14.8	175.0	169.3	168.9	167.8	154.3	119.7							
16.4	162.7	153.9	154.8	152.6	153.9	113.1	97.0						
19.7	142.4	129.4	130.3	130.5	122.8	110.2	93.3	72.3					
23.0	109.8	109.8	111.1	108.0	102.7	95.7	84.7	72.3	59.7				
26.2	85.1	85.1	86.2	86.4	86.2	80.9	78.3	72.1	59.7	47.2			
29.5	68.6	68.6	69.7	69.9	71.6	71.9	66.6	61.5	58.9	47.2	36.6		
32.8	57.1	57.1	59.3	61.3	63.1	62.2	57.8	53.4	51.1	47.2	36.6	29.1	
36.1			53.1	53.6	53.8	53.4	50.5	48.3	46.7	43.9	36.6	29.1	23.4
39.4			46.8	46.3	46.7	46.1	44.8	44.8	41.4	40.8	36.6	29.1	23.4
45.9			36.8	37.7	37.7	35.7	36.8	35.9	34.6	33.3	31.5	29.1	23.4
52.5				30.7	30.7	29.5	30.4	28.4	29.4	29.3	27.8	25.8	23.4
59.1				25.1	25.7	24.3	24.9	23.6	25.1	24.3	23.4	22.0	21.2
65.6					21.7	20.3	22.0	20.9	21.6	20.1	20.2	18.8	18.3
72.2					18.7	17.4	19.2	18.2	18.5	17.2	16.9	16.0	15.9
78.7						15.4	16.8	15.9	16.0	14.9	14.3	13.5	13.4
85.3						13.9	14.3	13.9	13.7	12.8	12.1	11.1	11.1
91.9							12.1	11.9	11.7	11.0	10.1	9.3	9.3
98.4							10.6	10.1	9.9	9.3	8.6	7.3	7.3
105.0								8.8	8.6	7.7	7.1	5.7	5.7
111.5								7.5	7.3	6.6	5.7	4.6	4.6
118.1									6.4	5.4	4.6	3.7	3.7
124.7									5.3	4.4	3.7	2.6	2.6
131.2									4.4	3.7	2.9		
137.8										2.9	2.2		
144.4										2.2			

* Over rear / * Sobre la parte trasera / ** With additional lifting equipment / ** Con equipo adicional



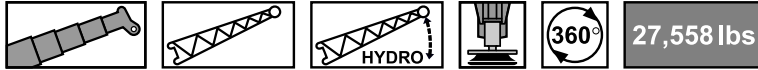
27,558 lbs

SAE

ft	196.8 ft + 12.5 ft			196.8 ft + 33.5 ft			196.8 ft + 59.1 ft			196.8 ft + 82.0 ft			196.8 ft + 105.0 ft		
	0°	20°	40°	0°	20°	40°	0°	20°	40°	0°	20°	40°	0°	20°	40°
39.4				12.6											
45.9	17.2	17.2	17.2	12.6			7.9								
52.5	17.2	16.8	16.3	12.6	12.6		7.9			6.0					
59.1	16.5	15.9	15.4	12.6	12.3		7.9			6.0			4.4		
65.6	15.7	15.2	14.8	12.6	11.9	11.0	7.9			6.0			4.4		
72.2	14.1	14.3	14.1	12.6	11.2	10.6	7.9	7.3		6.0			4.4		
78.7	11.7	12.1	12.6	11.5	10.8	10.1	7.9	7.1		6.0			4.4		
85.3	9.5	9.9	10.1	9.7	10.4	9.9	7.9	6.8	5.7	6.0	6.0		4.4		
91.9	7.7	7.9	8.4	7.9	9.5	9.5	7.9	6.6	5.5	6.0	6.0		4.4		
98.4	6.2	6.4	6.6	6.2	7.9	8.8	7.3	6.4	5.3	6.0	5.7		4.4	4.2	
105.0	4.9	5.1	5.3	5.1	6.4	7.3	6.0	6.2	5.3	6.0	5.5	5.1	4.4	4.2	
111.5	3.5	4.0	4.0	3.7	5.3	6.0	4.9	6.0	5.1	5.1	5.3	5.1	4.4	4.0	
118.1	2.6	2.9	3.1	2.9	4.0	4.9	3.7	5.3	5.1	4.0	5.1	4.9	4.4	4.0	
124.7		2.0	2.2	2.0	3.1	3.7	2.9	4.4	4.9	3.1	5.1	4.6	3.5	4.0	3.5
131.2					2.2	2.9		3.5	4.4		4.2	4.4		3.7	3.5
144.4								2.9			2.6	4.0		3.3	3.3
157.5															3.1

STERLING CRANE

Lifting capacities / Capacidades de elevación



SAE

ft	183.7 ft + 12.5 ft			183.7 ft + 33.5 ft			183.7 ft + 59.1 ft			183.7 ft + 82.0 ft			183.7 ft + 105.0 ft		
	0°	20°	40°	0°	20°	40°	0°	20°	40°	0°	20°	40°	0°	20°	40°
39.4	19.8	19.8		14.1											
45.9	19.8	19.4	18.7	14.1			8.6			6.4					
52.5	19.2	18.3	17.9	14.1	14.1		8.6			6.4			4.6		
59.1	18.1	17.4	17.0	14.1	13.4	12.6	8.6			6.4			4.6		
65.6	17.0	16.5	16.1	14.1	12.8	11.9	8.6	7.7		6.4			4.6		
72.2	14.3	15.0	15.2	13.7	12.1	11.5	8.6	7.5		6.4			4.6		
78.7	11.7	12.1	12.6	11.9	11.7	11.0	8.6	7.3	6.0	6.4	6.4		4.6		
85.3	9.5	9.9	10.1	9.7	11.2	10.6	8.6	7.1	5.7	6.4	6.4		4.6		
91.9	7.7	8.2	8.4	7.9	9.7	10.1	8.6	6.6	5.5	6.4	6.4		4.6		
98.4	6.2	6.4	6.6	6.4	7.9	8.8	7.5	6.6	5.5	6.4	6.2	5.5	4.6	4.4	
105.0	4.9	5.1	5.3	5.1	6.6	7.3	6.2	6.4	5.3	6.4	6.0	5.3	4.6	4.4	
111.5	3.7	4.0	4.2	4.0	5.3	6.0	4.9	6.2	5.3	5.3	5.7	5.3	4.6	4.2	
118.1	2.6	2.9	3.1	2.9	4.2	4.9	4.0	5.5	5.1	4.2	5.5	5.1	4.6	4.2	
124.7		2.0		2.0	3.1	3.7	3.1	4.4	5.1	3.3	5.3	4.9	3.7	4.0	3.5
131.2					2.4	2.9	2.2	3.5	4.6	2.6	4.4	4.9	2.9	4.0	3.5
144.4								2.0	2.9		2.6	4.0		3.5	3.3
157.5												2.4			3.1



SAE

ft	141.2 ft + 12.5 ft			141.2 ft + 33.5 ft			141.2 ft + 59.1 ft			141.2 ft + 82.0 ft			141.2 ft + 105.0 ft		
	0°	20°	40°	0°	20°	40°	0°	20°	40°	0°	20°	40°	0°	20°	40°
26.2				23.4											
29.5	36.6	33.1	31.1	23.4											
32.8	34.8	31.7	30.0	23.4			12.1								
36.1	33.5	30.6	28.9	23.4			12.1			8.4					
39.4	32.2	29.5	28.0	23.4	22.3		12.1			8.4			6.0		
45.9	29.8	27.6	26.2	23.4	20.7	18.1	12.1			8.4			6.0		
52.5	24.9	25.6	24.9	23.1	19.6	17.0	12.1	9.0		8.4			6.0		
59.1	20.3	20.9	21.6	20.5	18.3	16.3	11.9	8.6		8.4			6.0		
65.6	16.1	16.5	17.2	17.0	17.4	15.7	11.5	8.2	6.6	8.4	7.9		6.0		
72.2	12.8	13.2	13.9	13.7	15.4	15.0	10.8	7.9	6.4	8.4	7.7		6.0		
78.7	10.1	10.6	11.0	11.0	12.6	13.9	10.4	7.5	6.2	8.4	7.5		6.0	5.7	
85.3	7.9	8.4	8.8	8.8	10.4	11.5	9.9	7.3	6.0	8.4	7.3	6.0	6.0	5.5	
91.9	6.2	6.4	6.8	7.1	8.4	9.3	8.6	7.1	6.0	8.2	7.1	5.7	6.0	5.3	
98.4	4.6	4.9	5.3	5.5	6.6	7.5	7.1	6.8	5.7	7.7	6.8	5.5	6.0	5.1	
105.0	3.3	3.5	3.7	4.2	5.3	6.0	5.7	6.6	5.7	6.4	6.6	5.3	6.0	5.1	4.0
111.5	2.2	2.4	2.6	3.1	4.0	4.6	4.4	6.2	5.5	5.1	6.4	5.3	5.7	4.9	3.7
118.1				2.2	2.9	3.5	3.5	5.1	5.5	4.0	6.2	5.1	4.6	4.6	3.5
124.7					2.0	2.4	2.6	4.0	5.1	3.1	5.1	4.9	3.7	4.6	3.5
131.2								3.1	4.0	2.4	4.0	4.9	2.9	4.4	3.3
144.4									2.2		2.4	3.5		3.5	3.3
157.5												2.0		2.0	3.1
170.6															2.0