

STERLING CRANE

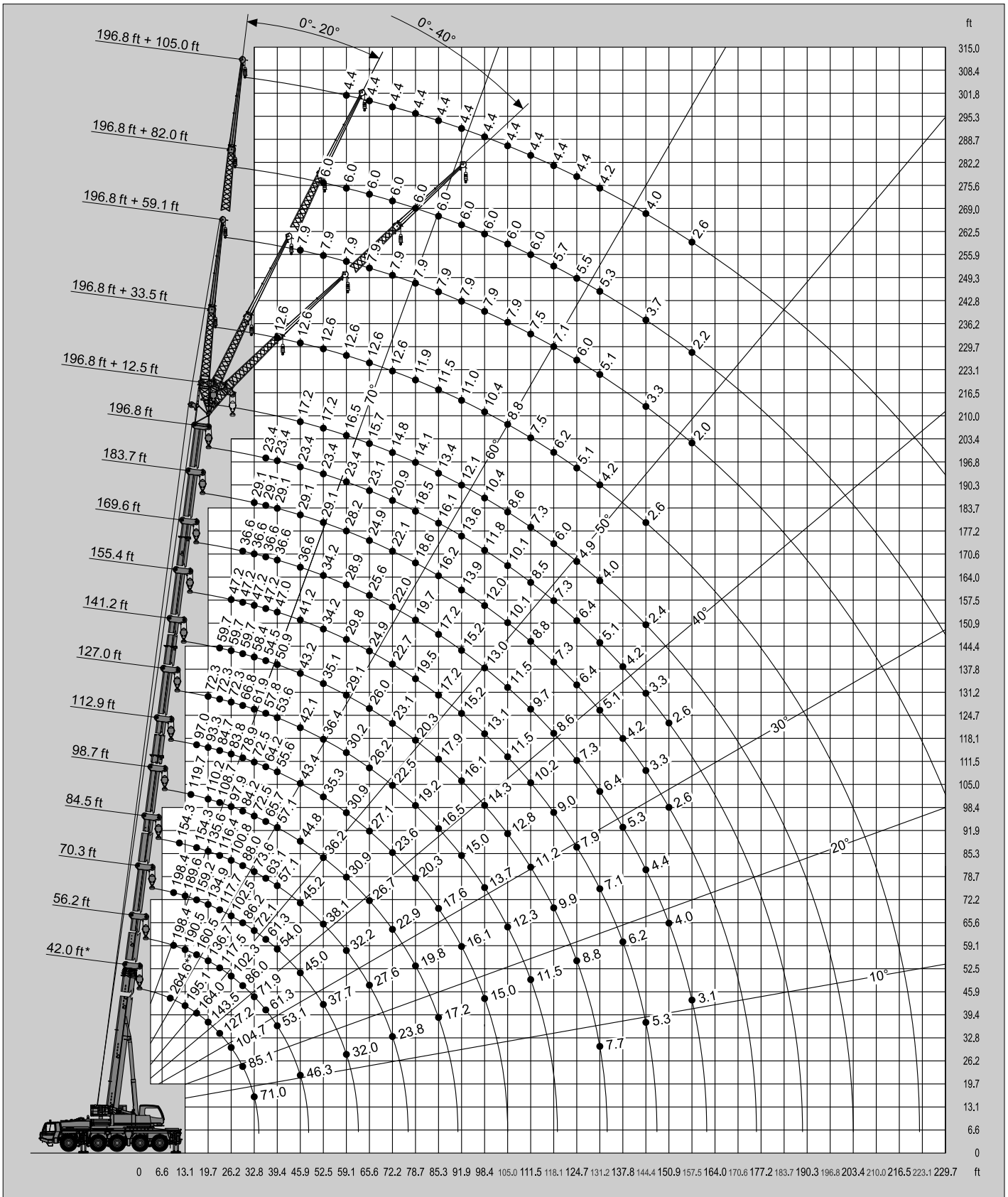


LIFTING CHARTS - All Terrain Cranes

TADANO MODEL ATF% \$; !) - 1*\$ TON CAPACITY

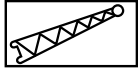
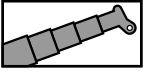


SAE



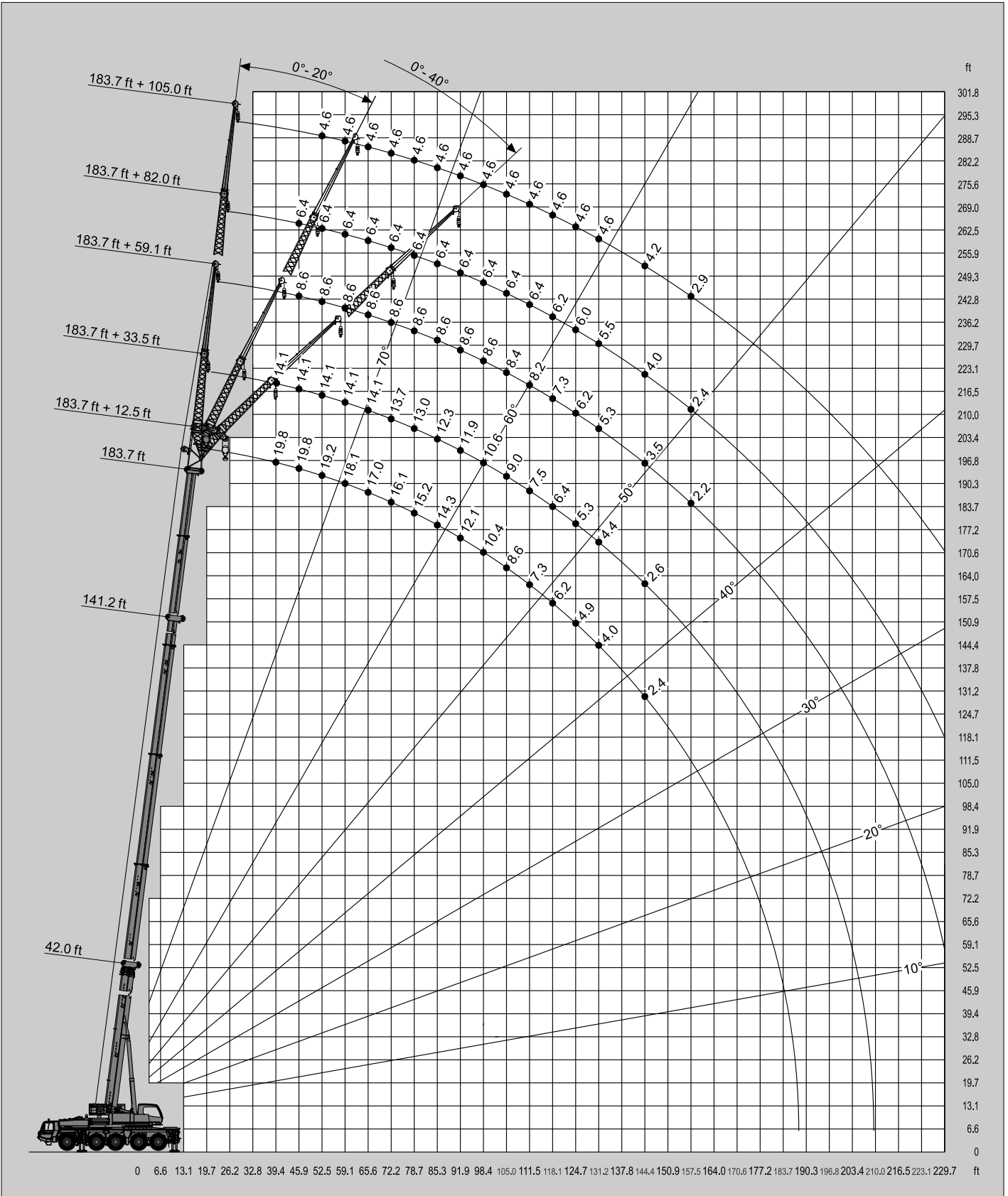
* Over rear / * Sobre la parte trasera
 ** With additional lifting equipment / ** Con equipo adicional

STERLING CRANE



47,178 lbs

SAE



STERLING CRANE

Lifting capacities / Capacidades de elevación



47,178 lbs

SAE

ft	42.0 ft*	42.0 ft	56.2 ft	70.3 ft	84.5 ft	98.7 ft	112.9 ft	127.0 ft	141.2 ft	155.4 ft	169.6 ft	183.7 ft	196.8 ft
8.9	264.6**												
9.8	235.9**	226.9**	198.4	198.4									
11.5	213.8	207.2	198.4	198.4	154.3								
13.1	195.1	190.7	190.5	189.6	154.3								
14.8	177.2	175.0	174.8	173.7	154.3	119.7							
16.4	164.0	160.7	160.5	159.2	154.3	113.1	97.0						
19.7	143.5	135.8	136.7	134.9	135.6	110.2	93.3	72.3					
23.0	127.2	116.6	117.5	117.7	116.4	108.7	84.7	72.3	59.7				
26.2	104.7	101.6	102.3	102.5	100.8	97.9	83.8	72.3	59.7	47.2			
29.5	85.1	85.1	86.0	86.2	88.0	84.2	78.9	66.8	59.7	47.2	36.6		
32.8	71.0	71.0	71.9	72.1	73.6	72.5	72.5	61.9	58.4	47.2	36.6	29.1	
36.1			61.3	61.3	63.1	65.7	64.2	57.8	54.5	47.2	36.6	29.1	23.4
39.4			53.4	54.0	57.1	57.1	55.6	53.6	50.9	47.0	36.6	29.1	23.4
45.9			46.3	45.0	45.2	44.8	43.4	42.1	43.2	41.2	36.6	29.1	23.4
52.5				37.7	38.1	36.2	35.3	36.4	35.1	34.2	34.2	29.1	23.4
59.1				32.0	32.2	30.9	30.9	30.2	29.1	29.8	28.9	28.2	23.4
65.6					27.6	26.7	27.1	26.2	26.0	24.9	25.6	24.9	23.1
72.2					23.8	22.9	23.6	22.5	23.1	22.7	22.0	22.1	20.9
78.7						19.8	20.3	19.2	20.3	19.5	19.7	18.6	18.5
85.3						17.2	17.6	16.5	17.9	17.2	17.2	16.2	16.1
91.9							16.1	15.0	16.1	15.2	15.2	13.9	13.6
98.4							15.0	13.7	14.3	13.1	13.0	12.0	11.8
105.0								12.3	12.8	11.5	11.5	10.1	10.1
111.5								11.5	11.2	10.2	9.7	8.8	8.5
118.1									9.9	9.0	8.6	7.3	7.3
124.7									8.8	7.9	7.3	6.4	6.4
131.2									7.7	7.1	6.4	5.1	5.1
137.8										6.2	5.3	4.2	4.2
144.4										5.3	4.4	3.3	3.3
150.9											4.0	2.6	2.6
157.5											3.1		

* Over rear / * Sobre la parte trasera / ** With additional lifting equipment / ** Con equipo adicional



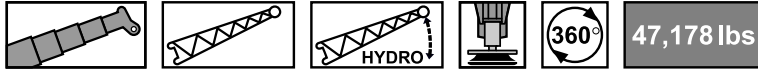
47,178 lbs

SAE

ft	196.8 ft + 12.5 ft			196.8 ft + 33.5 ft			196.8 ft + 59.1 ft			196.8 ft + 82.0 ft			196.8 ft + 105.0 ft		
	0°	20°	40°	0°	20°	40°	0°	20°	40°	0°	20°	40°	0°	20°	40°
39.4				12.6											
45.9	17.2	17.2	17.2	12.6			7.9								
52.5	17.2	16.8	16.3	12.6	12.6		7.9			6.0					
59.1	16.5	15.9	15.4	12.6	12.3		7.9			6.0			4.4		
65.6	15.7	15.2	14.8	12.6	11.9	11.0	7.9			6.0			4.4		
72.2	14.8	14.3	14.1	12.6	11.2	10.6	7.9	7.3		6.0			4.4		
78.7	14.1	13.7	13.4	11.9	10.8	10.1	7.9	7.1		6.0			4.4		
85.3	13.4	13.0	13.0	11.5	10.4	9.9	7.9	6.8	5.7	6.0	6.0		4.4		
91.9	12.1	12.6	12.3	11.0	9.9	9.5	7.9	6.6	5.5	6.0	6.0		4.4		
98.4	10.4	10.6	10.8	10.4	9.7	9.3	7.9	6.4	5.3	6.0	5.7		4.4	4.2	
105.0	8.6	9.0	9.3	8.8	9.3	8.8	7.9	6.2	5.3	6.0	5.5	5.1	4.4	4.2	
111.5	7.3	7.5	7.7	7.5	8.8	8.6	7.5	6.0	5.1	6.0	5.3	5.1	4.4	4.0	
118.1	6.0	6.2	6.4	6.2	7.5	8.2	7.1	6.0	5.1	5.7	5.1	4.9	4.4	4.0	
124.7	4.9	5.1	5.3	5.1	6.4	6.8	6.0	5.7	4.9	5.5	5.1	4.6	4.4	4.0	3.5
131.2	4.0	4.2	4.2	4.2	5.3	5.7	5.1	5.7	4.9	5.3	4.9	4.4	4.2	3.7	3.5
144.4	2.4	2.4	2.6	2.6	3.5	4.0	3.3	4.6	4.6	3.7	4.4	4.2	4.0	3.5	3.3
157.5					2.0	2.4	2.0	3.1	3.7	2.2	3.7	4.0	2.6	3.3	3.1
170.6									2.4		2.4	3.3		3.1	2.9
183.7												2.0		2.0	2.6
196.8															2.0

STERLING CRANE

Lifting capacities / Capacidades de elevación



47,178 lbs

SAE

ft	183.7 ft + 12.5 ft			183.7 ft + 33.5 ft			183.7 ft + 59.1 ft			183.7 ft + 82.0 ft			183.7 ft + 105.0 ft		
	0°	20°	40°	0°	20°	40°	0°	20°	40°	0°	20°	40°	0°	20°	40°
39.4	19.8	19.8		14.1											
45.9	19.8	19.4	18.7	14.1			8.6			6.4					
52.5	19.2	18.3	17.9	14.1	14.1		8.6			6.4			4.6		
59.1	18.1	17.4	17.0	14.1	13.4	12.6	8.6			6.4			4.6		
65.6	17.0	16.5	16.1	14.1	12.8	11.9	8.6	7.7		6.4			4.6		
72.2	16.1	15.7	15.4	13.7	12.1	11.5	8.6	7.5		6.4			4.6		
78.7	15.2	15.0	14.8	13.0	11.7	11.0	8.6	7.3	6.0	6.4	6.4		4.6		
85.3	14.3	14.1	13.9	12.3	11.2	10.6	8.6	7.1	5.7	6.4	6.4		4.6		
91.9	12.1	12.6	12.8	11.9	10.8	10.1	8.6	6.6	5.5	6.4	6.4		4.6		
98.4	10.4	10.6	10.8	10.6	10.4	9.9	8.6	6.6	5.5	6.4	6.2	5.5	4.6	4.4	
105.0	8.6	9.0	9.3	9.0	10.1	9.5	8.4	6.4	5.3	6.4	6.0	5.3	4.6	4.4	
111.5	7.3	7.5	7.7	7.5	8.8	9.3	8.2	6.2	5.3	6.4	5.7	5.3	4.6	4.2	
118.1	6.2	6.2	6.4	6.4	7.5	8.2	7.3	6.0	5.1	6.2	5.5	5.1	4.6	4.2	
124.7	4.9	5.3	5.3	5.3	6.4	7.1	6.2	5.7	5.1	6.0	5.3	4.9	4.6	4.0	3.5
131.2	4.0	4.2	4.4	4.4	5.3	5.7	5.3	5.7	5.1	5.5	5.1	4.9	4.6	4.0	3.5
144.4	2.4	2.6	2.6	2.6	3.5	4.0	3.5	4.6	4.9	4.0	4.9	4.4	4.2	3.7	3.3
157.5					2.2	2.4	2.2	3.1	4.0	2.4	4.0	4.2	2.9	3.5	3.1
170.6								2.0	2.4		2.6	3.5		3.3	3.1
183.7											2.2			2.0	2.9
196.8															2.0



47,178 lbs

SAE

ft	141.2 ft + 12.5 ft			141.2 ft + 33.5 ft			141.2 ft + 59.1 ft			141.2 ft + 82.0 ft			141.2 ft + 105.0 ft		
	0°	20°	40°	0°	20°	40°	0°	20°	40°	0°	20°	40°	0°	20°	40°
26.2				23.4											
29.5	36.6	33.1	31.1	23.4											
32.8	34.8	31.7	30.0	23.4			12.1								
36.1	33.5	30.6	28.9	23.4			12.1			8.4					
39.4	32.2	29.5	28.0	23.4	22.3		12.1			8.4			6.0		
45.9	29.8	27.6	26.2	23.4	20.7	18.1	12.1			8.4			6.0		
52.5	27.8	26.0	24.9	23.1	19.6	17.0	12.1	9.0		8.4			6.0		
59.1	26.2	24.5	23.6	21.8	18.3	16.3	11.9	8.6		8.4			6.0		
65.6	22.7	23.4	22.7	20.5	17.4	15.7	11.5	8.2	6.6	8.4	7.9		6.0		
72.2	18.7	19.2	19.8	19.4	16.5	15.0	10.8	7.9	6.4	8.4	7.7		6.0		
78.7	15.4	15.9	16.3	16.5	15.9	14.3	10.4	7.5	6.2	8.4	7.5		6.0	5.7	
85.3	12.8	13.2	13.7	13.9	15.2	13.9	9.9	7.3	6.0	8.4	7.3	6.0	6.0	5.5	
91.9	10.6	11.0	11.2	11.7	12.8	13.4	9.5	7.1	6.0	8.2	7.1	5.7	6.0	5.3	
98.4	8.8	9.0	9.3	9.7	10.8	11.7	9.0	6.8	5.7	8.2	6.8	5.5	6.0	5.1	
105.0	7.1	7.5	7.7	8.2	9.0	9.9	8.6	6.6	5.7	7.9	6.6	5.3	6.0	5.1	4.0
111.5	5.7	6.0	6.2	6.8	7.7	8.2	8.2	6.4	5.5	7.7	6.4	5.3	6.0	4.9	3.7
118.1	4.6	4.9		5.5	6.4	6.8	6.8	6.2	5.5	7.5	6.2	5.1	5.7	4.6	3.5
124.7	3.5	3.7		4.4	5.1	5.5	5.7	6.0	5.3	6.4	6.0	4.9	5.5	4.6	3.5
131.2	2.6	2.6		3.5	4.2	4.4	4.9	6.0	5.3	5.3	5.7	4.9	5.3	4.4	3.3
144.4				2.0	2.4		3.1	4.2	4.9	3.7	5.1	4.6	4.2	4.0	3.3
157.5								2.6	3.1	2.4	3.5	4.4	2.9	3.7	3.1
170.6											2.2	2.9		3.1	2.9
183.7														2.0	2.9