

STERLING CRANE

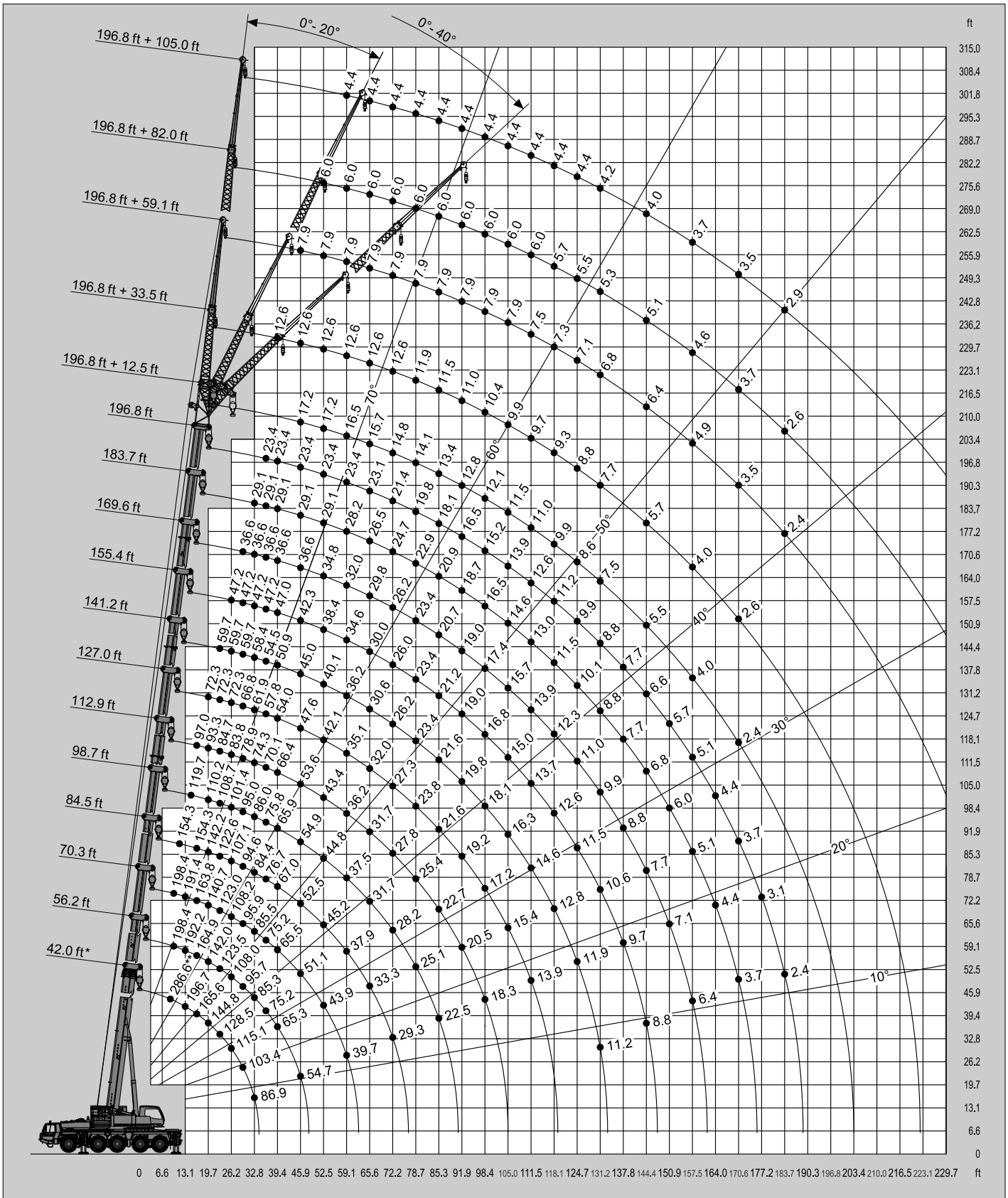


LIFTING CHARTS - All Terrain Cranes

TADANO MODEL ATF% \$; !) - 1* \$ TON CAPACITY

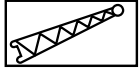
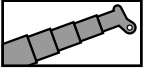


SAE



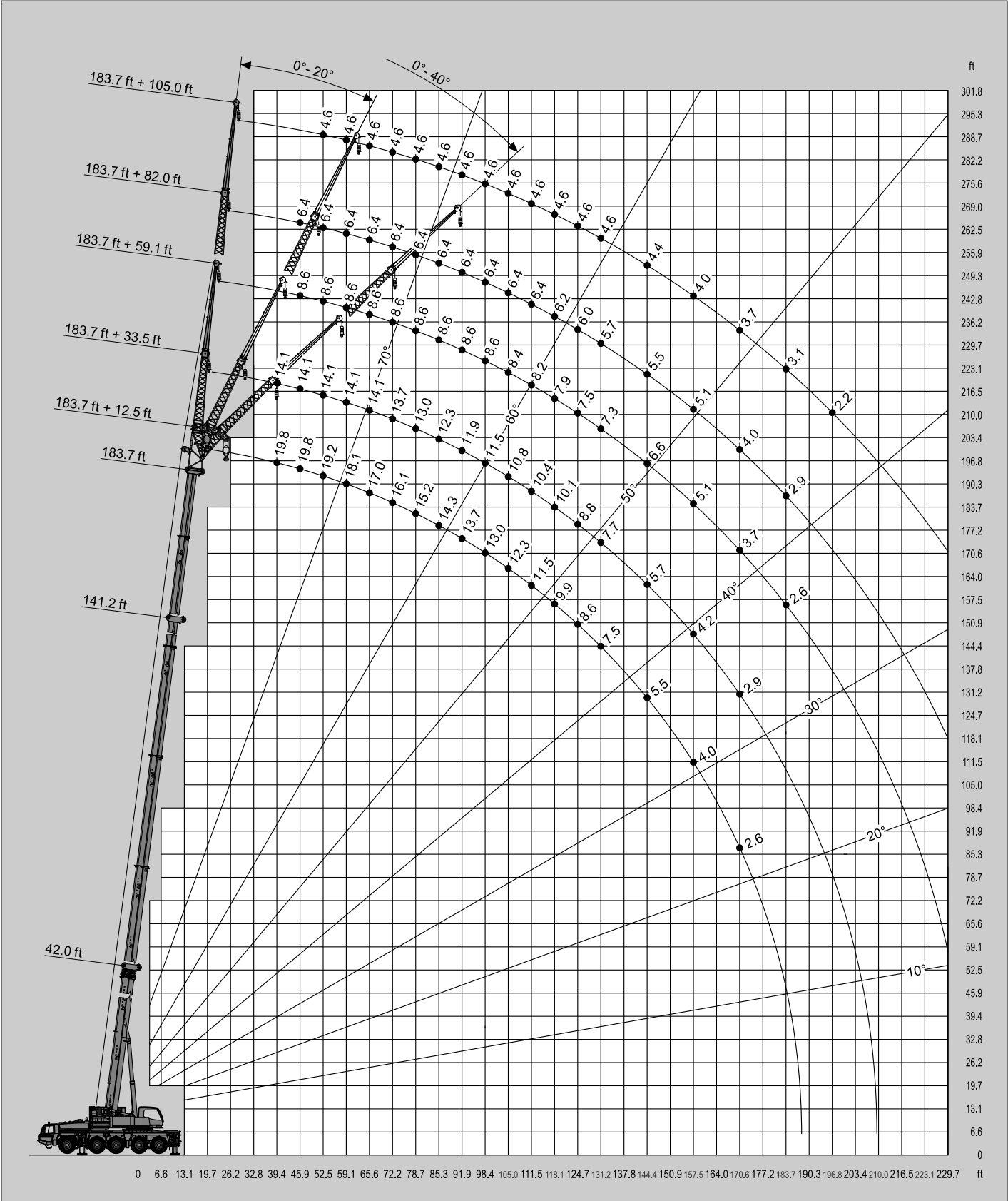
* Over rear / * Sobre la parte trasera
 ** With additional lifting equipment / ** Con equipo adicional

STERLING CRANE

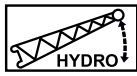
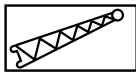
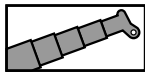


69,224 lbs

SAE

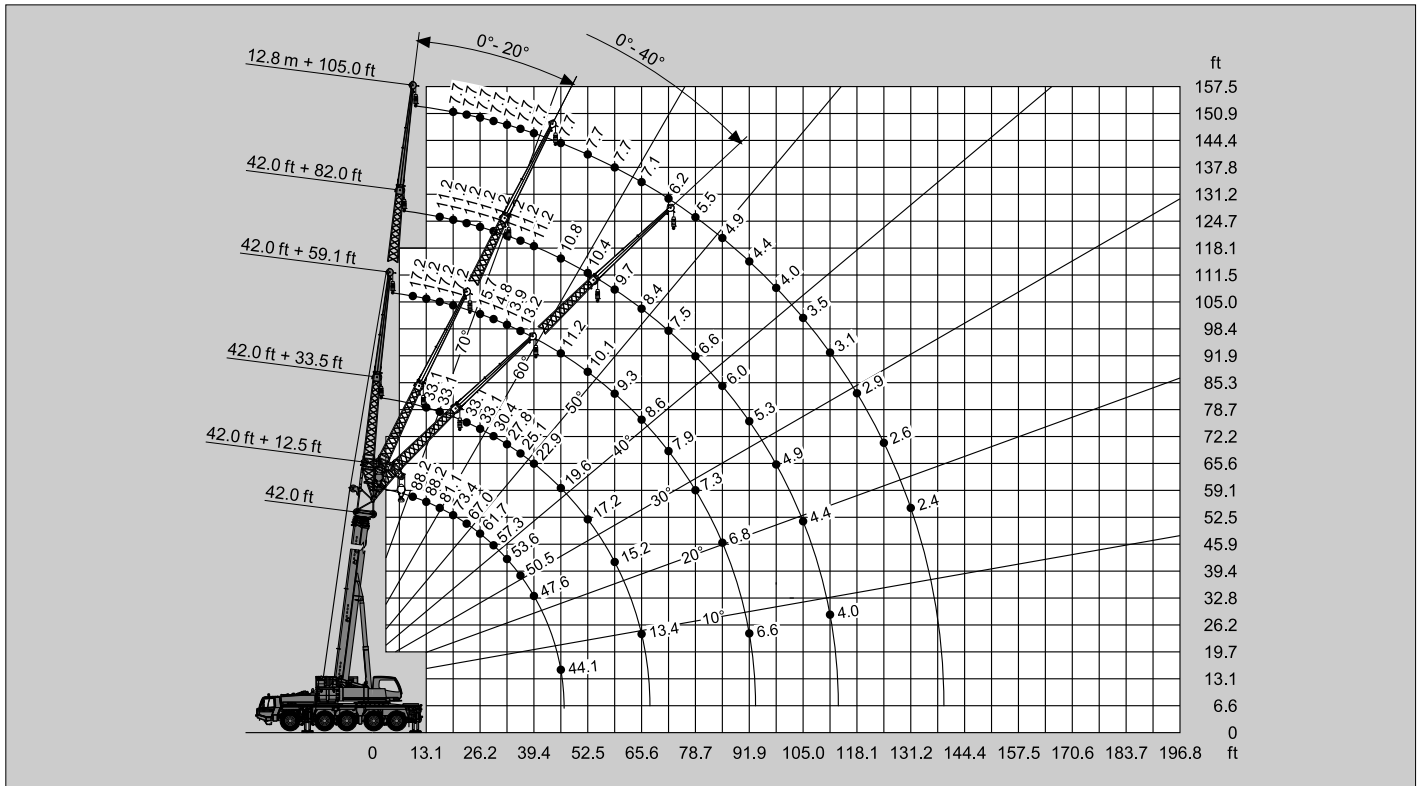


STERLING CRANE



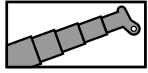
69,224 lbs

SAE



STERLING CRANE

Lifting capacities / Capacidades de elevación

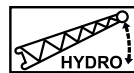
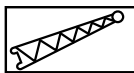
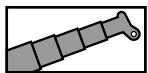


69,224 lbs

SAE

ft	42.0 ft*	42.0 ft	56.2 ft	70.3 ft	84.5 ft	98.7 ft	112.9 ft	127.0 ft	141.2 ft	155.4 ft	169.6 ft	183.7 ft	196.8 ft
8.9	286.6**												
9.8	238.8**	228.8**	198.4	198.4									
11.5	216.3	209.0	198.4	198.4	154.3								
13.1	196.7	192.5	192.2	191.4	154.3								
14.8	180.8	178.1	177.7	177.0	154.3	119.7							
16.4	165.6	165.1	164.9	163.8	154.3	113.1	97.0						
19.7	144.8	142.2	142.0	140.7	142.2	110.2	93.3	72.3					
23.0	128.5	122.8	123.5	123.0	122.6	108.7	84.7	72.3	59.7				
26.2	115.1	107.4	108.0	108.2	107.1	101.4	83.8	72.3	59.7	47.2			
29.5	103.4	95.0	95.7	95.9	94.6	95.0	78.9	66.8	59.7	47.2	36.6		
32.8	86.9	84.9	85.3	85.5	84.4	86.0	74.3	61.9	58.4	47.2	36.6	29.1	
36.1			75.2	75.2	76.7	75.8	70.1	57.8	54.5	47.2	36.6	29.1	23.4
39.4			65.3	65.5	67.0	65.9	66.4	54.0	50.9	47.0	36.6	29.1	23.4
45.9			54.7	51.1	52.5	54.9	53.6	47.6	45.0	42.3	36.6	29.1	23.4
52.5				43.9	45.2	44.8	43.4	42.1	40.1	38.4	34.8	29.1	23.4
59.1				39.7	37.9	37.5	36.2	35.1	36.2	34.6	32.0	28.2	23.4
65.6					33.3	31.7	31.7	32.0	30.6	30.0	29.8	26.5	23.1
72.2					29.3	28.2	27.8	27.3	26.2	26.0	26.2	24.7	21.4
78.7						25.1	25.4	23.8	23.4	23.4	23.4	22.9	19.8
85.3						22.5	22.7	21.6	21.6	21.2	20.7	20.9	18.1
91.9							20.5	19.2	19.8	19.0	19.0	18.7	16.5
98.4							18.3	17.2	18.1	16.8	17.4	16.5	15.2
105.0								15.4	16.3	15.0	15.7	14.6	13.9
111.5								13.9	14.6	13.7	13.9	13.0	12.6
118.1									12.8	12.6	12.3	11.5	11.2
124.7									11.9	11.5	11.0	10.1	9.9
131.2									11.2	10.6	9.9	8.8	8.8
137.8										9.7	8.8	7.7	7.7
144.4										8.8	7.7	6.8	6.6
150.9											7.1	6.0	5.7
157.5											6.4	5.1	5.1
164.0												4.4	4.4
170.6												3.7	3.7
177.2													3.1
183.7													2.4

* Over rear / * Sobre la parte trasera / ** With additional lifting equipment / ** Con equipo adicional



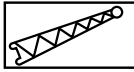
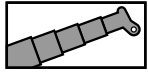
69,224 lbs

SAE

ft	196.8 ft + 12.5 ft			196.8 ft + 33.5 ft			196.8 ft + 59.1 ft			196.8 ft + 82.0 ft			196.8 ft + 105.0 ft		
	0°	20°	40°	0°	20°	40°	0°	20°	40°	0°	20°	40°	0°	20°	40°
39.4				12.6											
45.9	17.2	17.2	17.2	12.6			7.9								
52.5	17.2	16.8	16.3	12.6	12.6		7.9			6.0					
59.1	16.5	15.9	15.4	12.6	12.3		7.9			6.0			4.4		
65.6	15.7	15.2	14.8	12.6	11.9	11.0	7.9			6.0			4.4		
72.2	14.8	14.3	14.1	12.6	11.2	10.6	7.9	7.3		6.0			4.4		
78.7	14.1	13.7	13.4	11.9	10.8	10.1	7.9	7.1		6.0			4.4		
85.3	13.4	13.0	13.0	11.5	10.4	9.9	7.9	6.8	5.7	6.0	6.0		4.4		
91.9	12.8	12.6	12.3	11.0	9.9	9.5	7.9	6.6	5.5	6.0	6.0		4.4		
98.4	12.1	11.9	11.7	10.4	9.7	9.3	7.9	6.4	5.3	6.0	5.7		4.4	4.2	
105.0	11.5	11.2	11.2	9.9	9.3	8.8	7.9	6.2	5.3	6.0	5.5	5.1	4.4	4.2	
111.5	11.0	10.8	10.8	9.7	9.0	8.6	7.5	6.0	5.1	6.0	5.3	5.1	4.4	4.0	
118.1	9.9	10.1	10.1	9.3	8.8	8.4	7.3	6.0	5.1	5.7	5.1	4.9	4.4	4.0	
124.7	8.6	8.8	9.0	8.8	8.4	8.2	7.1	5.7	4.9	5.5	5.1	4.6	4.4	4.0	3.5
131.2	7.5	7.7	7.7	7.7	8.2	7.9	6.8	5.7	4.9	5.3	4.9	4.4	4.2	3.7	3.5
144.4	5.5	5.7	5.7	5.7	6.6	7.1	6.4	5.3	4.6	5.1	4.4	4.2	4.0	3.5	3.3
157.5	4.0	4.0		4.0	4.9	5.3	4.9	5.1	4.6	4.6	4.2	4.0	3.7	3.3	3.1
170.6	2.4	2.6		2.6	3.5	3.7	3.5	4.4	4.6	3.7	3.7	3.7	3.5	3.1	2.9
183.7					2.2		2.4	3.1	3.5	2.6	3.5	3.3	2.9	2.9	2.6
196.8								2.0	2.4		2.6	3.1		2.6	2.4
210.0												2.0		2.2	2.2
223.1															2.0

STERLING CRANE

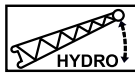
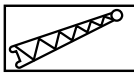
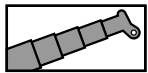
Lifting capacities / Capacidades de elevación



69,224 lbs

SAE

ft	183.7 ft + 12.5 ft			183.7 ft + 33.5 ft			183.7 ft + 59.1 ft			183.7 ft + 82.0 ft			183.7 ft + 105.0 ft		
	0°	20°	40°	0°	20°	40°	0°	20°	40°	0°	20°	40°	0°	20°	40°
39.4	19.8	19.8		14.1											
45.9	19.8	19.4	18.7	14.1			8.6			6.4					
52.5	19.2	18.3	17.9	14.1	14.1		8.6			6.4			4.6		
59.1	18.1	17.4	17.0	14.1	13.4	12.6	8.6			6.4			4.6		
65.6	17.0	16.5	16.1	14.1	12.8	11.9	8.6	7.7		6.4			4.6		
72.2	16.1	15.7	15.4	13.7	12.1	11.5	8.6	7.5		6.4			4.6		
78.7	15.2	15.0	14.8	13.0	11.7	11.0	8.6	7.3	6.0	6.4	6.4		4.6		
85.3	14.3	14.1	13.9	12.3	11.2	10.6	8.6	7.1	5.7	6.4	6.4		4.6		
91.9	13.7	13.4	13.2	11.9	10.8	10.1	8.6	6.6	5.5	6.4	6.4		4.6		
98.4	13.0	12.8	12.6	11.5	10.4	9.9	8.6	6.6	5.5	6.4	6.2	5.5	4.6	4.4	
105.0	12.3	12.1	11.9	10.8	10.1	9.5	8.4	6.4	5.3	6.4	6.0	5.3	4.6	4.4	
111.5	11.5	11.5	11.5	10.4	9.7	9.3	8.2	6.2	5.3	6.4	5.7	5.3	4.6	4.2	
118.1	9.9	10.1	10.4	10.1	9.5	9.0	7.9	6.0	5.1	6.2	5.5	5.1	4.6	4.2	
124.7	8.6	8.8	9.0	8.8	9.0	8.8	7.5	5.7	5.1	6.0	5.3	4.9	4.6	4.0	3.5
131.2	7.5	7.7	7.7	7.7	8.8	8.6	7.3	5.7	5.1	5.7	5.1	4.9	4.6	4.0	3.5
144.4	5.5	5.7	5.7	5.7	6.6	7.1	6.6	5.5	4.9	5.5	4.9	4.4	4.4	3.7	3.3
157.5	4.0	4.0		4.2	4.9	5.3	5.1	5.3	4.6	5.1	4.4	4.2	4.0	3.5	3.1
170.6	2.6	2.6		2.9	3.5		3.7	4.4	4.6	4.0	4.2	4.0	3.7	3.3	3.1
183.7					2.2		2.6	3.3	3.5	2.9	3.7	3.7	3.1	3.1	2.9
196.8								2.2			2.6	3.3	2.2	2.9	2.6
210.0												2.2	2.2	2.2	2.4
223.1														2.2	2.0



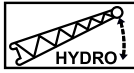
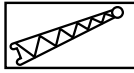
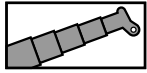
69,224 lbs

SAE

ft	141.2 ft + 12.5 ft			141.2 ft + 33.5 ft			141.2 ft + 59.1 ft			141.2 ft + 82.0 ft			141.2 ft + 105.0 ft		
	0°	20°	40°	0°	20°	40°	0°	20°	40°	0°	20°	40°	0°	20°	40°
26.2				23.4											
29.5	36.6	33.1	31.1	23.4											
32.8	34.8	31.7	30.0	23.4			12.1								
36.1	33.5	30.6	28.9	23.4			12.1			8.4					
39.4	32.2	29.5	28.0	23.4	22.3		12.1			8.4			6.0		
45.9	29.8	27.6	26.2	23.4	20.7	18.1	12.1			8.4			6.0		
52.5	27.8	26.0	24.9	23.1	19.6	17.0	12.1	9.0		8.4			6.0		
59.1	26.2	24.5	23.6	21.8	18.3	16.3	11.9	8.6		8.4			6.0		
65.6	24.9	23.4	22.7	20.5	17.4	15.7	11.5	8.2	6.6	8.4	7.9		6.0		
72.2	23.6	22.3	21.6	19.4	16.5	15.0	10.8	7.9	6.4	8.4	7.7		6.0		
78.7	21.4	21.4	20.9	18.3	15.9	14.3	10.4	7.5	6.2	8.4	7.5		6.0	5.7	
85.3	18.5	19.0	19.2	17.4	15.2	13.9	9.9	7.3	6.0	8.4	7.3	6.0	6.0	5.5	
91.9	15.9	16.1	16.5	16.5	14.6	13.4	9.5	7.1	6.0	8.2	7.1	5.7	6.0	5.3	
98.4	13.4	13.9	14.1	14.6	14.1	13.0	9.0	6.8	5.7	8.2	6.8	5.5	6.0	5.1	
105.0	11.7	11.9	12.1	12.6	13.7	12.6	8.6	6.6	5.7	7.9	6.6	5.3	6.0	5.1	4.0
111.5	9.9	10.1	10.4	10.8	11.7	12.3	8.4	6.4	5.5	7.7	6.4	5.3	6.0	4.9	3.7
118.1	8.4	8.6		9.5	10.1	10.8	7.9	6.2	5.5	7.5	6.2	5.1	5.7	4.6	3.5
124.7	7.3	7.3		8.2	8.8	9.3	7.7	6.0	5.3	7.3	6.0	4.9	5.5	4.6	3.5
131.2	6.2	6.2		7.1	7.5	7.9	7.5	6.0	5.3	7.1	5.7	4.9	5.3	4.4	3.3
144.4	4.2			5.1	5.5		6.2	5.7	5.3	6.4	5.5	4.6	4.9	4.0	3.3
157.5				3.5	3.7		4.6	5.5	5.3	5.3	5.1	4.4	4.2	3.7	3.1
170.6							3.3	4.0		3.7	4.9	4.4	3.7	3.5	2.9
183.7							2.2			2.6	3.5		3.1	3.3	2.9
196.8											2.2		2.2	3.1	2.9
210.0													2.0	2.0	2.0

STERLING CRANE

Lifting capacities / Capacidades de elevación



69,224 lbs

SAE

ft	42.0 ft + 12.5 ft			42.0 ft + 33.5 ft			42.0 ft + 59.1 ft			42.0 ft + 82.0 ft			42.0 ft + 105.0 ft		
	0°	20°	40°	0°	20°	40°	0°	20°	40°	0°	20°	40°	0°	20°	40°
9.8	88.2	72.1		33.1			17.2								
11.5	88.2	69.0	55.6	33.1			17.2								
13.1	88.2	66.1	54.0	33.1			17.2								
14.8	85.8	63.7	52.5	33.1			17.2			11.2					
16.4	81.1	61.3	51.1	33.1	31.1		17.2			11.2					
19.7	73.4	57.3	48.9	33.1	28.7		17.2			11.2			7.7		
23.0	67.0	53.8	47.0	33.1	26.7		16.5			11.2			7.7		
26.2	61.7	50.9	45.2	33.1	24.9	20.1	15.7			11.2			7.7		
29.5	57.3	48.5	43.9	30.4	23.4	19.2	14.8	11.5		11.2			7.7		
32.8	53.6	46.3	43.0	27.8	22.0	18.5	13.9	11.0		11.2			7.7		
36.1	50.5	44.5	42.3	25.1	20.7	17.6	13.2	10.4		11.2			7.7		
39.4	47.6	43.2		22.9	19.8	17.2	12.6	9.9		11.2			7.7		
45.9	44.1			19.6	18.1	16.1	11.2	9.0	7.7	10.8	9.9		7.7		
52.5				17.2	16.8	15.4	10.1	8.4	7.3	10.4	8.8		7.7		
59.1				15.2	15.7		9.3	7.7	6.8	9.7	7.9		7.7	6.8	
65.6				13.4			8.6	7.3	6.6	8.4	7.3	6.2	7.1	6.2	
72.2							7.9	6.8	6.4	7.5	6.6	5.7	6.2	5.7	
78.7							7.3	6.6	6.2	6.6	6.2	5.5	5.5	5.1	
85.3							6.8	6.4		6.0	5.7	5.1	4.9	4.9	4.2
91.9							6.6			5.3	5.3	4.9	4.4	4.4	4.0
98.4										4.9	5.1	4.6	4.0	4.2	3.5
105.0										4.4	4.6		3.5	3.7	3.5
111.5										4.0			3.1	3.5	3.3
118.1													2.9	3.3	3.1
124.7													2.6	3.1	3.1
131.2													2.4	3.1	