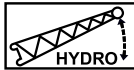
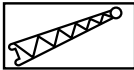
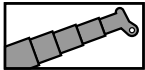


STERLING CRANE



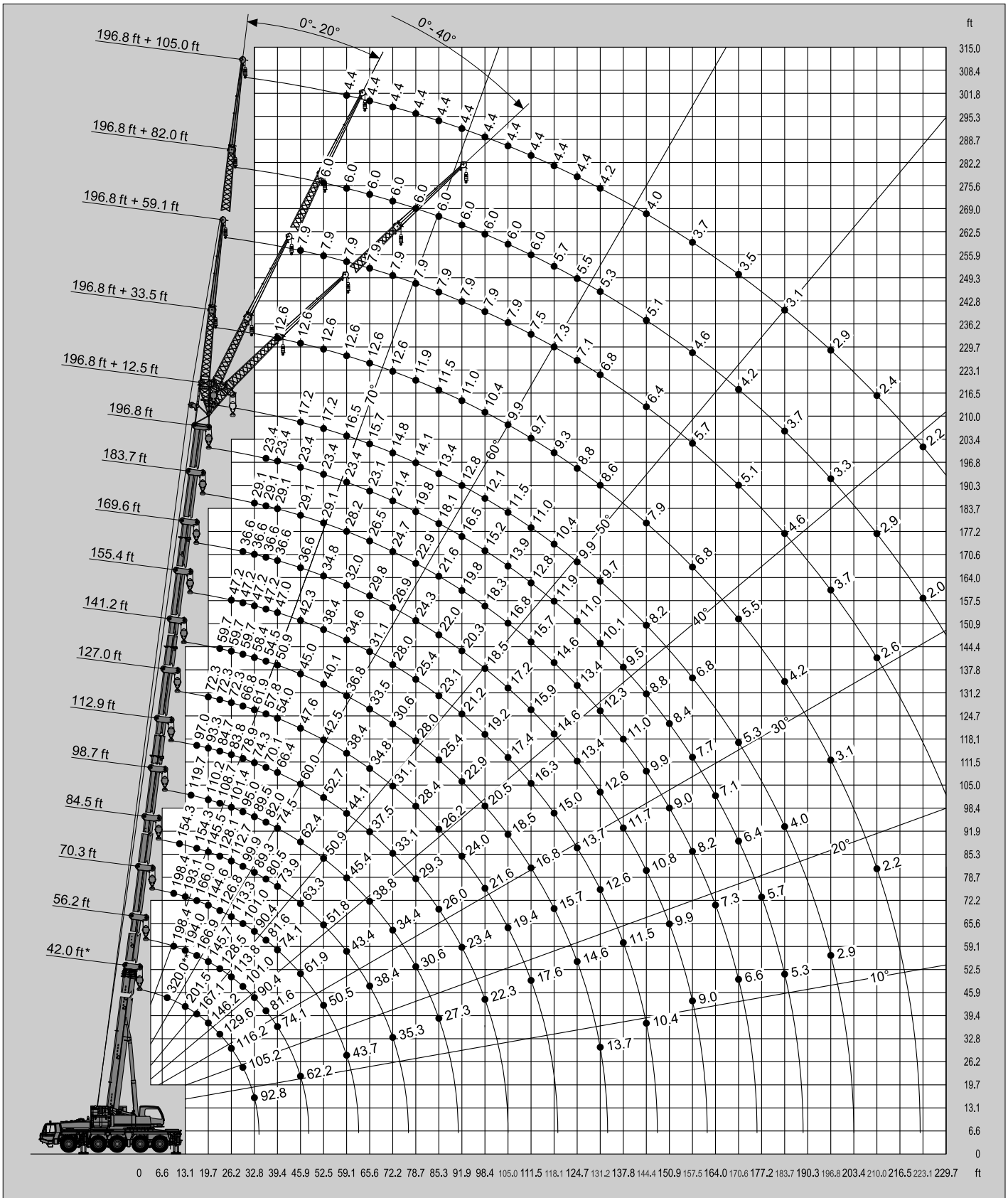
LIFTING CHARTS - All Terrain Cranes

TADANO MODEL ATF% \$; !) - 1*\$ TON CAPACITY



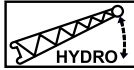
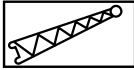
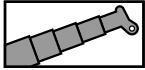
92,593 lbs

SAE



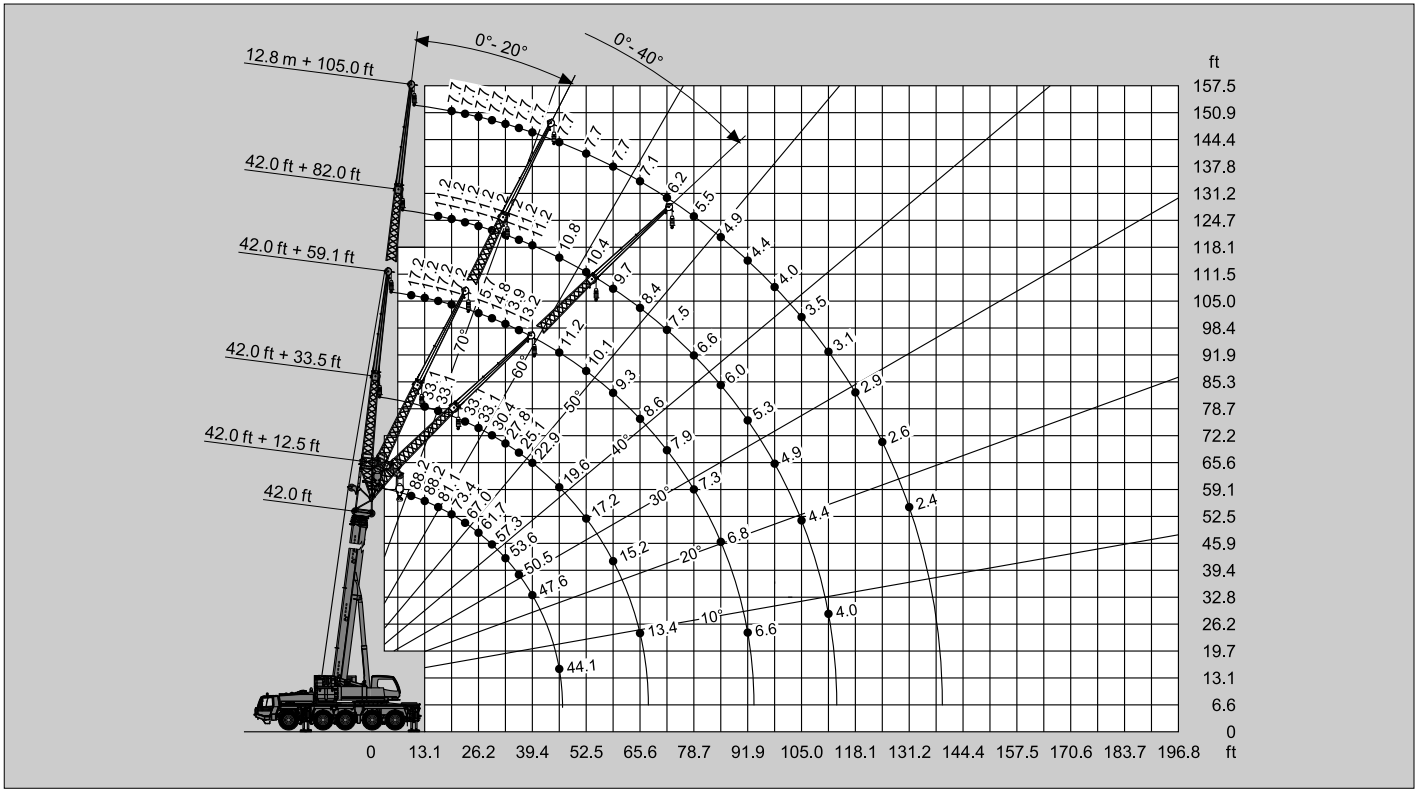
* Over rear / * Sobre la parte trasera
 ** With additional lifting equipment / ** Con equipo adicional

STERLING CRANE



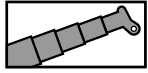
92,593 lbs

SAE



STERLING CRANE

Lifting capacities / Capacidades de elevación

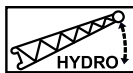
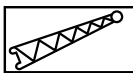
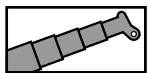


92,593 lbs

SAE

ft	42.0 ft*	42.0 ft	56.2 ft	70.3 ft	84.5 ft	98.7 ft	112.9 ft	127.0 ft	141.2 ft	155.4 ft	169.6 ft	183.7 ft	196.8 ft
	8.0	320.0**											
8.9	286.6**												
9.8	245.2**	230.8**	198.4	198.4									
11.5	219.8	211.0	198.4	198.4	154.3								
13.1	201.5	194.2	194.0	193.1	154.3								
14.8	183.6	179.7	179.5	178.6	154.3	119.7							
16.4	167.1	167.1	166.9	166.0	154.3	113.1	97.0						
19.7	146.2	145.9	145.7	144.6	145.5	110.2	93.3	72.3					
23.0	129.6	128.1	128.5	126.8	128.1	108.7	84.7	72.3	59.7				
26.2	116.2	112.9	113.8	113.3	112.7	101.4	83.8	72.3	59.7	47.2			
29.5	105.2	100.1	101.0	101.0	99.9	95.0	78.9	66.8	59.7	47.2	36.6		
32.8	92.8	89.5	90.4	90.4	89.3	89.5	74.3	61.9	58.4	47.2	36.6	29.1	
36.1			81.6	81.6	80.5	82.0	70.1	57.8	54.5	47.2	36.6	29.1	23.4
39.4			74.1	74.1	73.9	74.5	66.4	54.0	50.9	47.0	36.6	29.1	23.4
45.9			62.2	61.9	63.3	62.4	60.0	47.6	45.0	42.3	36.6	29.1	23.4
52.5				50.5	51.8	50.9	52.7	42.5	40.1	38.4	34.8	29.1	23.4
59.1				43.7	43.4	45.4	44.1	38.4	36.8	34.6	32.0	28.2	23.4
65.6					38.4	38.8	37.5	34.8	33.5	31.1	29.8	26.5	23.1
72.2					35.3	34.4	33.1	31.1	30.6	28.0	26.9	24.7	21.4
78.7						30.6	29.3	28.4	28.0	25.4	24.3	22.9	19.8
85.3						27.3	26.0	26.2	25.4	23.1	22.0	21.6	18.1
91.9							23.4	24.0	22.9	21.2	20.3	19.8	16.5
98.4							22.3	21.6	20.5	19.2	18.5	18.3	15.2
105.0								19.4	18.5	17.4	17.2	16.8	13.9
111.5								17.6	16.8	16.3	15.9	15.7	12.8
118.1									15.7	15.0	14.6	14.6	11.9
124.7									14.6	13.7	13.4	13.4	11.0
131.2										12.6	12.6	12.3	10.1
137.8											11.5	11.7	9.5
144.4										10.4	10.8	9.9	8.8
150.9											9.9	9.0	8.4
157.5											9.0	8.2	7.7
164.0												7.3	7.1
170.6												6.6	6.4
177.2													5.7
183.7													5.3

* Over rear / * Sobre la parte trasera / ** With additional lifting equipment / ** Con equipo adicional



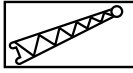
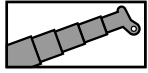
92,593 lbs

SAE

ft	196.8 ft + 12.5 ft			196.8 ft + 33.5 ft			196.8 ft + 59.1 ft			196.8 ft + 82.0 ft			196.8 ft + 105.0 ft		
	0°	20°	40°	0°	20°	40°	0°	20°	40°	0°	20°	40°	0°	20°	40°
39.4				12.6											
45.9	17.2	17.2	17.2	12.6			7.9								
52.5	17.2	16.8	16.3	12.6	12.6		7.9			6.0					
59.1	16.5	15.9	15.4	12.6	12.3		7.9			6.0			4.4		
65.6	15.7	15.2	14.8	12.6	11.9	11.0	7.9			6.0			4.4		
72.2	14.8	14.3	14.1	12.6	11.2	10.6	7.9	7.3		6.0			4.4		
78.7	14.1	13.7	13.4	11.9	10.8	10.1	7.9	7.1		6.0			4.4		
85.3	13.4	13.0	13.0	11.5	10.4	9.9	7.9	6.8	5.7	6.0	6.0		4.4		
91.9	12.8	12.6	12.3	11.0	9.9	9.5	7.9	6.6	5.5	6.0	6.0		4.4		
98.4	12.1	11.9	11.7	10.4	9.7	9.3	7.9	6.4	5.3	6.0	5.7		4.4	4.2	
105.0	11.5	11.2	11.2	9.9	9.3	8.8	7.9	6.2	5.3	6.0	5.5	5.1	4.4	4.2	
111.5	11.0	10.8	10.8	9.7	9.0	8.6	7.5	6.0	5.1	6.0	5.3	5.1	4.4	4.0	
118.1	10.4	10.4	10.1	9.3	8.8	8.4	7.3	6.0	5.1	5.7	5.1	4.9	4.4	4.0	
124.7	9.9	9.9	9.9	8.8	8.4	8.2	7.1	5.7	4.9	5.5	5.1	4.6	4.4	4.0	3.5
131.2	9.7	9.5	9.5	8.6	8.2	7.9	6.8	5.7	4.9	5.3	4.9	4.4	4.2	3.7	3.5
144.4	8.2	8.4	8.4	7.9	7.5	7.3	6.4	5.3	4.6	5.1	4.4	4.2	4.0	3.5	3.3
157.5	6.8	7.1		6.8	6.6	6.6	5.7	5.1	4.6	4.6	4.2	4.0	3.7	3.3	3.1
170.6	5.3	5.3		5.5	6.0	6.0	5.1	4.9	4.6	4.2	3.7	3.7	3.5	3.1	2.9
183.7	4.0	4.0		4.2	4.9		4.6	4.4	4.4	3.7	3.5	3.3	3.1	2.9	2.6
196.8	2.9			3.1	3.5		3.7	4.0	4.0	3.3	3.1	3.1	2.9	2.6	2.4
210.0				2.2	2.4		2.6	3.3		2.9	2.9	2.9	2.4	2.4	2.2
223.1								2.2		2.0	2.6	2.6	2.2	2.0	2.2
236.2															2.0

STERLING CRANE

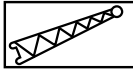
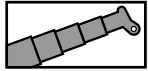
Lifting capacities / Capacidades de elevación



92,593 lbs

SAE

ft	183.7 ft + 12.5 ft			183.7 ft + 33.5 ft			183.7 ft + 59.1 ft			183.7 ft + 82.0 ft			183.7 ft + 105.0 ft		
	0°	20°	40°	0°	20°	40°	0°	20°	40°	0°	20°	40°	0°	20°	40°
39.4	19.8	19.8		14.1											
45.9	19.8	19.4	18.7	14.1			8.6			6.4					
52.5	19.2	18.3	17.9	14.1	14.1		8.6			6.4			4.6		
59.1	18.1	17.4	17.0	14.1	13.4	12.6	8.6			6.4			4.6		
65.6	17.0	16.5	16.1	14.1	12.8	11.9	8.6	7.7		6.4			4.6		
72.2	16.1	15.7	15.4	13.7	12.1	11.5	8.6	7.5		6.4			4.6		
78.7	15.2	15.0	14.8	13.0	11.7	11.0	8.6	7.3	6.0	6.4	6.4		4.6		
85.3	14.3	14.1	13.9	12.3	11.2	10.6	8.6	7.1	5.7	6.4	6.4		4.6		
91.9	13.7	13.4	13.2	11.9	10.8	10.1	8.6	6.6	5.5	6.4	6.4		4.6		
98.4	13.0	12.8	12.6	11.5	10.4	9.9	8.6	6.6	5.5	6.4	6.2	5.5	4.6	4.4	
105.0	12.3	12.1	11.9	10.8	10.1	9.5	8.4	6.4	5.3	6.4	6.0	5.3	4.6	4.4	
111.5	11.7	11.5	11.5	10.4	9.7	9.3	8.2	6.2	5.3	6.4	5.7	5.3	4.6	4.2	
118.1	11.2	11.0	11.0	10.1	9.5	9.0	7.9	6.0	5.1	6.2	5.5	5.1	4.6	4.2	
124.7	10.8	10.6	10.6	9.7	9.0	8.8	7.5	5.7	5.1	6.0	5.3	4.9	4.6	4.0	3.5
131.2	10.4	10.1	10.1	9.3	8.8	8.6	7.3	5.7	5.1	5.7	5.1	4.9	4.6	4.0	3.5
144.4	8.8	8.8	9.0	8.4	8.4	8.2	6.8	5.5	4.9	5.5	4.9	4.4	4.4	3.7	3.3
157.5	6.8	7.1		7.3	7.7	7.7	6.6	5.3	4.6	5.1	4.4	4.2	4.0	3.5	3.1
170.6	5.3	5.3		5.7	6.2		6.2	5.1	4.6	4.9	4.2	4.0	3.7	3.3	3.1
183.7	4.0			4.4	4.9		5.1	5.1	4.6	4.4	4.0	3.7	3.5	3.1	2.9
196.8				3.3	3.5		4.0	4.4		4.2	3.7	3.5	3.3	2.9	2.6
210.0							2.9	3.3		3.1	3.7	3.5	3.1	2.6	2.4
223.1							2.0	2.2		2.2	2.9	2.9	2.6	2.6	2.4
236.2										2.0			2.4		2.2



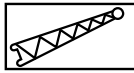
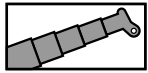
92,593 lbs

SAE

ft	141.2 ft + 12.5 ft			141.2 ft + 33.5 ft			141.2 ft + 59.1 ft			141.2 ft + 82.0 ft			141.2 ft + 105.0 ft		
	0°	20°	40°	0°	20°	40°	0°	20°	40°	0°	20°	40°	0°	20°	40°
26.2				23.4											
29.5	36.6	33.1	31.1	23.4											
32.8	34.8	31.7	30.0	23.4			12.1								
36.1	33.5	30.6	28.9	23.4			12.1			8.4					
39.4	32.2	29.5	28.0	23.4	22.3		12.1			8.4			6.0		
45.9	29.8	27.6	26.2	23.4	20.7	18.1	12.1			8.4			6.0		
52.5	27.8	26.0	24.9	23.1	19.6	17.0	12.1	9.0		8.4			6.0		
59.1	26.2	24.5	23.6	21.8	18.3	16.3	11.9	8.6		8.4			6.0		
65.6	24.9	23.4	22.7	20.5	17.4	15.7	11.5	8.2	6.6	8.4	7.9		6.0		
72.2	23.6	22.3	21.6	19.4	16.5	15.0	10.8	7.9	6.4	8.4	7.7		6.0		
78.7	22.0	21.4	20.9	18.3	15.9	14.3	10.4	7.5	6.2	8.4	7.5		6.0	5.7	
85.3	20.5	20.3	20.3	17.4	15.2	13.9	9.9	7.3	6.0	8.4	7.3	6.0	6.0	5.5	
91.9	19.2	19.0	19.2	16.5	14.6	13.4	9.5	7.1	6.0	8.2	7.1	5.7	6.0	5.3	
98.4	17.9	17.9	17.9	15.9	14.1	13.0	9.0	6.8	5.7	8.2	6.8	5.5	6.0	5.1	
105.0	16.1	16.3	16.5	15.2	13.7	12.6	8.6	6.6	5.7	7.9	6.6	5.3	6.0	5.1	4.0
111.5	14.3	14.6	14.8	14.8	13.2	12.3	8.4	6.4	5.5	7.7	6.4	5.3	6.0	4.9	3.7
118.1	12.6	12.8		13.4	12.8	12.1	7.9	6.2	5.5	7.5	6.2	5.1	5.7	4.6	3.5
124.7	11.0	11.2		11.9	12.6	11.7	7.7	6.0	5.3	7.3	6.0	4.9	5.5	4.6	3.5
131.2	9.7	9.9		10.6	11.2	11.7	7.5	6.0	5.3	7.1	5.7	4.9	5.3	4.4	3.3
144.4	7.5			8.4	8.8		7.1	5.7	5.3	6.4	5.5	4.6	4.9	4.0	3.3
157.5				6.6	6.8		6.6	5.5	5.3	5.7	5.1	4.4	4.2	3.7	3.1
170.6							6.2	5.5		5.1	4.9	4.4	3.7	3.5	2.9
183.7							4.9			4.6	4.6		3.3	3.3	2.9
196.8										4.0	4.4		2.9	3.1	2.9
210.0										3.1			2.6	2.9	
223.1													2.4	2.9	

STERLING CRANE

Lifting capacities / Capacidades de elevación



92,593 lbs

SAE

ft	42.0 ft + 12.5 ft			42.0 ft + 33.5 ft			42.0 ft + 59.1 ft			42.0 ft + 82.0 ft			42.0 ft + 105.0 ft		
	0°	20°	40°	0°	20°	40°	0°	20°	40°	0°	20°	40°	0°	20°	40°
9.8	88.2	72.1		33.1			17.2								
11.5	88.2	69.0	55.6	33.1			17.2								
13.1	88.2	66.1	54.0	33.1			17.2								
14.8	85.8	63.7	52.5	33.1			17.2			11.2					
16.4	81.1	61.3	51.1	33.1	31.1		17.2			11.2					
19.7	73.4	57.3	48.9	33.1	28.7		17.2			11.2			7.7		
23.0	67.0	53.8	47.0	33.1	26.7		16.5			11.2			7.7		
26.2	61.7	50.9	45.2	33.1	24.9	20.1	15.7			11.2			7.7		
29.5	57.3	48.5	43.9	30.4	23.4	19.2	14.8	11.5		11.2			7.7		
32.8	53.6	46.3	43.0	27.8	22.0	18.5	13.9	11.0		11.2			7.7		
36.1	50.5	44.5	42.3	25.1	20.7	17.6	13.2	10.4		11.2			7.7		
39.4	47.6	43.2		22.9	19.8	17.2	12.6	9.9		11.2			7.7		
45.9	44.1			19.6	18.1	16.1	11.2	9.0	7.7	10.8	9.9		7.7		
52.5				17.2	16.8	15.4	10.1	8.4	7.3	10.4	8.8		7.7		
59.1				15.2	15.7		9.3	7.7	6.8	9.7	7.9		7.7	6.8	
65.6				13.4			8.6	7.3	6.6	8.4	7.3	6.2	7.1	6.2	
72.2							7.9	6.8	6.4	7.5	6.6	5.7	6.2	5.7	
78.7							7.3	6.6	6.2	6.6	6.2	5.5	5.5	5.1	
85.3							6.8	6.4		6.0	5.7	5.1	4.9	4.9	4.2
91.9							6.6			5.3	5.3	4.9	4.4	4.4	4.0
98.4										4.9	5.1	4.6	4.0	4.2	3.5
105.0										4.4	4.6		3.5	3.7	3.5
111.5										4.0			3.1	3.5	3.3
118.1													2.9	3.3	3.1
124.7													2.6	3.1	3.1
131.2													2.4	3.1	