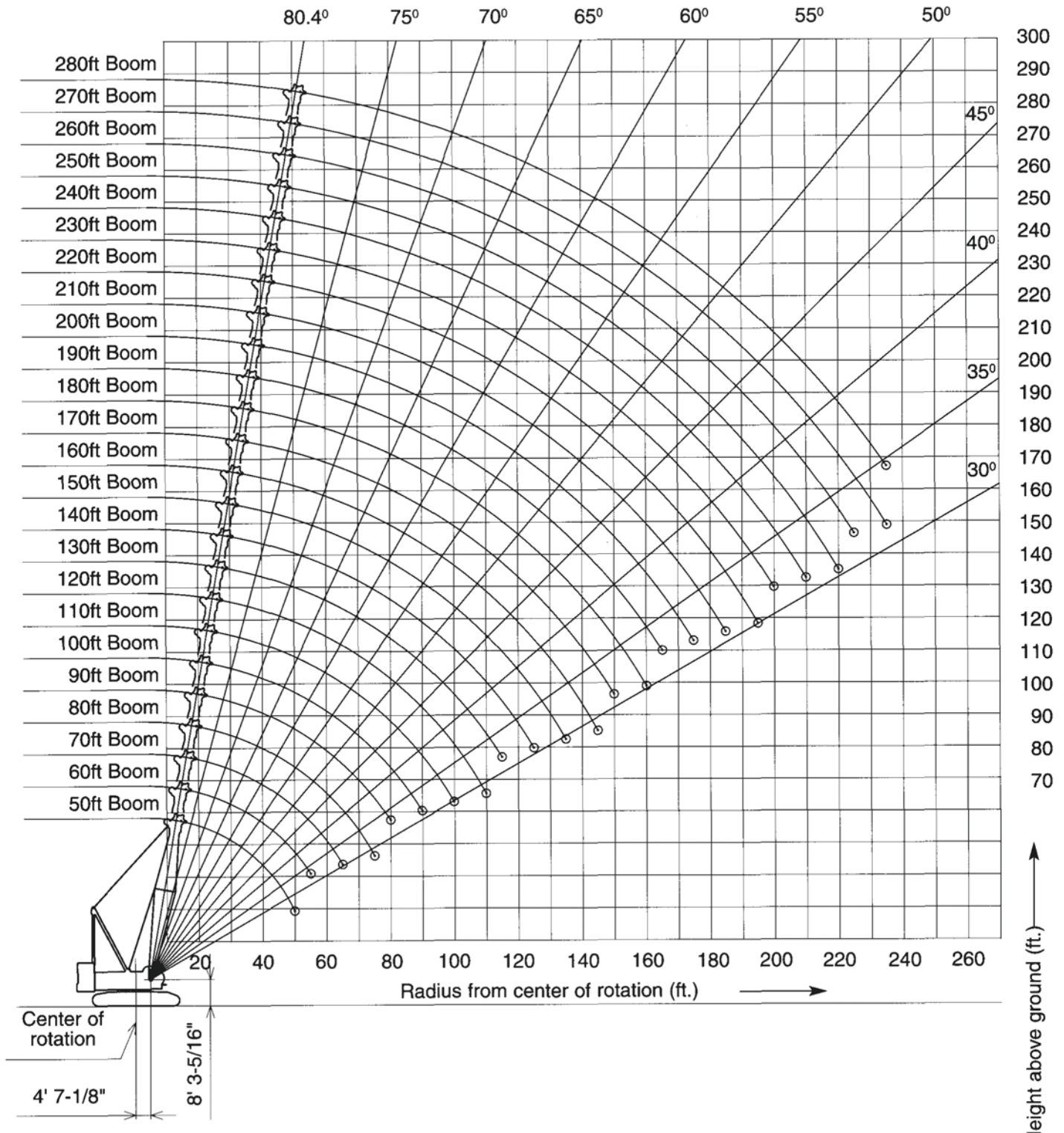




LIFTING CHARTS - Crawler Cranes

KOBELCO MODEL CK2000-II - 200 TON CAPACITY

## CK2000-II Main Boom Working Ranges



# STERLING CRANE

## CK2000-II Main Boom Rated Loads in Pounds

Refer to notes page 11

11 Counterweights (132,280 lbs) + 2 Low Weights (22,050 lbs x 2)

* 40' Boom			50' Boom			60' Boom			70' Boom		
Load Radius (ft)	Boom Angle (deg.)	360° Rated Load (lbs)	Load Radius (ft)	Boom Angle (deg.)	360° Rated Load (lbs)	Load Radius (ft)	Boom Angle (deg.)	360° Rated Load (lbs)	Load Radius (ft)	Boom Angle (deg.)	360° Rated Load (lbs)
12.3	83.5	400,000 *	14.3	80.4	352,800 *	16	80.4	318,000 *	17.7	80.4	289,700 *
13	82.5	381,100 *	15	79.6	337,800 *	17	79.4	300,600 *	18	80.1	285,100 *
14	81.1	356,500 *	16	78.4	318,000 *	18	78.4	285,100 *	19	79.3	271,200 *
15	79.6	335,100 *	17	77.3	300,600 *	19	77.5	271,200 *	20	78.4	258,800 *
16	78.1	316,400 *	18	76.1	285,100 *	20	76.5	258,800 *	22	76.8	235,900 *
17	76.6	300,000 *	19	74.9	271,200 *	22	74.5	235,900 *	24	75.1	217,000 *
18	75.1	284,900 *	20	73.7	258,800 *	24	72.5	217,000 *	26	73.4	199,700
19	73.6	271,000 *	22	71.3	235,900 *	26	70.5	199,700	28	71.6	185,000
20	72.0	258,600 *	24	68.8	217,000 *	28	68.4	185,000	30	69.9	172,100
22	68.9	235,100 *	26	66.3	199,700	30	66.3	172,100	32	68.1	160,900
24	65.7	214,000 *	28	63.7	185,000	32	64.2	160,900	34	66.3	151,000
26	62.4	196,100 *	30	61.1	172,100	34	62.0	151,000	36	64.5	142,200
28	58.9	180,800 *	32	58.4	160,900	36	59.8	142,200	38	62.7	134,400
30	55.3	166,400 *	34	55.6	151,000	38	57.5	134,400	40	60.8	126,500
32	51.5	153,700 *	36	52.7	142,200	40	55.2	126,800	45	55.9	107,800
34	47.5	142,500 *	38	49.7	134,400	45	49.0	108,000	50	50.7	93,700
36	43.1	130,600 *	40	46.6	127,200	50	42.2	94,100	55	45.1	82,900
38	38.3	119,900 *	45	37.7	108,500	55	34.2	83,100	60	38.9	74,100
40	32.7	110,300 *	50	26.4	86,400				65	31.5	67,000
* Heavy Boom Only											
80' Boom			90' Boom			100' Boom			110' Boom		
Load Radius (ft)	Boom Angle (deg.)	360° Rated Load (lbs)	Load Radius (ft)	Boom Angle (deg.)	360° Rated Load (lbs)	Load Radius (ft)	Boom Angle (deg.)	360° Rated Load (lbs)	Load Radius (ft)	Boom Angle (deg.)	360° Rated Load (lbs)
19.3	80.4	267,400 *	21	80.4	247,000 *	22.7	80.4	229,100 *	24.3	80.4	214,100 *
20	79.9	258,800 *	22	79.7	235,900 *	24	79.6	217,000 *	26	79.5	199,700
22	78.4	235,900 *	24	78.4	217,000 *	26	78.4	199,700	28	78.5	185,000
24	77.0	217,000 *	26	77.1	199,700	28	77.3	185,000	30	77.4	172,100
26	75.5	199,700 *	28	75.8	185,000	30	76.1	172,100	32	76.3	160,900
28	74.0	185,000 *	30	74.5	172,100	32	74.9	160,900	34	75.2	151,000
30	72.5	172,100 *	32	73.2	160,900	34	73.7	151,000	36	74.1	142,200
32	71.0	160,900 *	34	71.8	151,000	36	72.5	142,200	38	73.1	134,400
34	69.4	151,000	36	70.5	142,200	38	71.3	134,400	40	72.0	125,200
36	67.9	142,200	38	69.1	134,400	40	70.1	125,700	45	69.2	106,500
38	66.3	134,400	40	67.7	125,900	45	67.0	106,900	50	66.4	92,400
40	64.7	126,100	45	64.2	107,100	50	63.8	92,800	55	63.5	81,300
45	60.7	107,400	50	60.6	93,300	55	60.5	82,000	60	60.5	72,500
50	56.4	93,300	55	56.8	82,200	60	57.2	73,200	65	57.4	65,500
55	52.0	82,500	60	52.9	73,400	65	53.7	65,900	70	54.3	59,300
60	47.2	73,600	65	48.7	66,100	70	50.0	60,000	75	50.9	54,200
65	42.0	66,600	70	44.3	60,200	75	46.1	54,900	80	47.5	50,000
70	36.2	60,600	75	39.4	55,100	80	41.9	50,500	85	43.8	46,300
75	29.4	55,600	80	34.0	50,900	85	37.3	46,700	90	39.8	43,000
						90	32.2	43,400	95	35.5	40,100
									100	30.6	37,500

# STERLING CRANE

## CK2000-II Main Boom Rated Loads in Pounds

Refer to notes page 11

11 Counterweights (132,280 lbs) + 2 Low Weights (22,050 lbs x 2)

120' Boom			130' Boom			140' Boom			150' Boom		
Load Radius (ft)	Boom Angle (deg.)	360° Rated Load (lbs)	Load Radius (ft)	Boom Angle (deg.)	360° Rated Load (lbs)	Load Radius (ft)	Boom Angle (deg.)	360° Rated Load (lbs)	Load Radius (ft)	Boom Angle (deg.)	360° Rated Load (lbs)
26	80.4	199,700	27.7	80.4	177,000	29.3	80.4	175,000 *	31	80.4	161,600
28	79.4	185,000	28	80.2	177,000	30	80.1	171,100	32	80.0	156,100
30	78.5	172,100	30	79.4	172,100	32	79.3	159,200	34	79.2	145,900
32	77.5	160,900	32	78.5	160,900	34	78.5	148,800	36	78.5	136,900
34	76.5	151,000	34	77.5	151,000	36	77.6	139,800	38	77.7	129,200
36	75.5	142,200	36	76.6	142,200	38	76.8	131,800	40	76.9	122,100
38	74.5	134,400	38	75.7	134,300	40	75.9	124,600	45	74.9	105,400
40	73.5	125,200	40	74.8	125,000	45	73.8	105,800	50	72.9	91,300
45	71.0	106,500	45	72.5	106,300	50	71.7	91,700	55	70.9	80,200
50	68.4	92,400	50	70.2	92,200	55	69.5	80,700	60	68.9	71,400
55	65.8	81,300	55	67.8	81,100	60	67.3	71,600	65	66.8	64,200
60	63.2	72,500	60	65.4	72,300	65	65.0	64,600	70	64.7	58,000
65	60.5	65,300	65	62.9	65,000	70	62.7	58,400	75	62.5	52,900
70	57.7	59,100	70	60.4	58,900	75	60.4	53,400	80	60.4	48,500
75	54.8	54,000	75	57.8	53,800	80	58.0	48,900	85	58.1	44,800
80	51.8	49,600	80	55.2	49,400	85	55.5	45,200	90	55.8	41,400
85	48.6	45,900	85	52.4	45,600	90	53.0	41,900	95	53.5	38,600
90	45.3	42,500	90	49.6	42,300	95	50.4	38,800	100	51.0	35,900
95	41.8	39,700	95	46.6	39,500	100	47.6	36,400	105	48.5	33,500
100	38.0	37,000	100	43.4	36,800	105	44.8	34,000	110	45.9	31,500
105	33.9	34,800	105	40.1	34,600	110	41.7	32,000	115	43.1	29,500
110	29.2	32,800	110	36.4	32,400	115	38.5	30,000	120	40.2	28,000
			115	32.5	30,600	120	35.1	28,200	125	37.2	26,500
						125	31.3	26,900	130	33.8	24,900
									135	30.2	23,600

160' Boom			170' Boom			180' Boom			190' Boom		
Load Radius (ft)	Boom Angle (deg.)	360° Rated Load (lbs)	Load Radius (ft)	Boom Angle (deg.)	360° Rated Load (lbs)	Load Radius (ft)	Boom Angle (deg.)	360° Rated Load (lbs)	Load Radius (ft)	Boom Angle (deg.)	360° Rated Load (lbs)
32.7	80.4	147,500	34.3	80.4	136,700 *	36	80.4	126,300 *	37.7	80.4	115,500 *
34	79.9	143,700	36	79.8	132,300	38	79.8	122,400 *	38	80.3	115,300 *
36	79.2	134,900	38	79.1	124,600	40	79.1	115,500	40	79.7	113,300 *
38	78.5	127,200	40	78.5	117,700	45	77.5	101,600	45	78.1	100,300
40	77.7	120,100	45	76.7	103,600	50	75.8	90,400	50	76.6	89,300
45	75.9	105,400	50	75.0	90,800	55	74.2	79,400	55	75.0	79,100
50	74.0	91,000	55	73.2	79,600	60	72.5	70,300	60	73.5	70,300
55	72.1	80,000	60	71.5	70,800	65	70.8	63,100	65	71.9	63,100
60	70.2	71,200	65	69.7	63,500	70	69.1	57,100	70	70.3	56,900
65	68.3	63,900	70	67.9	57,500	75	67.4	52,000	75	68.7	51,800
70	66.4	58,000	75	66.0	52,200	80	65.7	47,600	80	67.0	47,400
75	64.4	52,700	80	64.1	47,800	85	63.9	43,700	85	65.4	43,700
80	62.4	48,300	85	62.3	44,100	90	62.1	40,300	90	63.7	40,100
85	60.3	44,500	90	60.3	40,800	95	60.3	37,500	95	62.0	37,300
90	58.2	41,200	95	58.4	37,700	100	58.4	34,800	100	60.3	34,600
95	56.1	38,400	100	56.3	35,300	105	56.5	32,400	105	58.5	32,200
100	53.9	35,700	105	54.3	32,800	110	54.6	30,400	110	56.7	30,200
105	51.6	33,300	110	52.2	30,600	115	52.6	28,400	115	54.9	28,200
110	49.3	31,300	115	50.0	28,900	120	50.6	26,700	120	53.0	26,500
115	46.9	29,300	120	47.7	27,100	125	48.5	25,100	125	51.1	24,900
120	44.3	27,600	125	45.4	25,600	130	46.3	23,800	130	49.1	23,400
125	41.7	26,000	130	42.9	24,000	135	44.0	22,500	135	47.1	22,000
130	38.9	24,700	135	40.4	22,700	140	41.7	21,200	140	45.0	20,900
135	35.9	23,400	140	37.7	21,600	145	39.2	20,100	145	42.8	19,800
140	32.7	22,000	145	34.8	20,500	150	36.6	19,000	150	40.5	18,700
145	29.2	20,900	150	31.7	19,400	155	33.8	18,100	155	38.1	17,900
						160	30.7	17,200	160	35.5	17,000
									165	32.8	16,100

# STERLING CRANE

## CK2000-II Main Boom Rated Loads in Pounds

Refer to notes page 11

11 Counterweights (132,280 lbs) + 2 Low Weights (22,050 lbs x 2)

200' Boom			210' Boom			220' Boom			230' Boom		
Load Radius (ft)	Boom Angle (deg.)	360° Rated Load (lbs)	Load Radius (ft)	Boom Angle (deg.)	360° Rated Load (lbs)	Load Radius (ft)	Boom Angle (deg.)	360° Rated Load (lbs)	Load Radius (ft)	Boom Angle (deg.)	360° Rated Load (lbs)
39.3	80.4	106,500 *	41	80.4	98,500 *	42.7	80.4	90,800 *	44.3	80.4	83,800 *
40	80.2	105,800 *	45	79.3	95,500 *	45	79.8	89,300 *	45	80.2	83,300 *
45	78.7	98,300 *	50	77.9	86,200 *	50	78.5	84,900 *	50	79.0	79,800 *
50	77.3	87,500	55	76.5	77,600	55	77.1	76,300 *	55	77.7	74,700 *
55	75.8	78,700	60	75.1	69,700	60	75.8	69,200	60	76.4	67,900 *
60	74.3	69,900	65	73.7	62,400	65	74.4	62,200	65	75.1	61,700 *
65	72.8	62,600	70	72.2	56,400	70	73.1	56,000	70	73.8	55,600
70	71.3	56,400	75	70.8	51,100	75	71.7	50,900	75	72.5	50,500
75	69.8	51,400	80	69.3	46,700	80	70.3	46,500	80	71.2	46,100
80	68.3	47,000	85	67.9	43,000	85	68.9	42,500	85	69.9	42,100
85	66.7	43,000	90	66.4	39,700	90	67.5	39,200	90	68.6	38,800
90	65.1	39,700	95	64.9	36,600	95	66.1	36,200	95	67.2	35,900
95	63.5	36,800	100	63.4	34,000	100	64.7	33,500	100	65.8	33,300
100	61.9	34,200	105	61.8	31,500	105	63.2	31,300	105	64.5	30,900
105	60.3	31,700	110	60.3	29,500	110	61.7	29,100	110	63.1	28,700
110	58.6	29,800	115	58.7	27,600	115	60.2	27,100	115	61.7	26,900
115	56.9	27,800	120	57.1	25,800	120	58.7	25,600	120	60.2	25,100
120	55.2	26,000	125	55.4	24,300	125	57.2	23,800	125	58.8	23,600
125	53.4	24,500	130	53.7	22,900	130	55.6	22,500	130	57.3	22,000
130	51.6	22,900	135	52.0	21,400	135	54.0	21,200	135	55.8	20,700
135	49.7	21,600	140	50.2	20,300	140	52.4	19,800	140	54.3	19,400
140	47.8	20,500	145	48.4	19,200	145	50.7	18,700	145	52.7	18,300
145	45.8	19,400	150	46.6	18,100	150	49.0	17,600	150	51.1	17,200
150	43.8	18,300	155	44.6	17,200	155	47.2	16,800	155	49.5	16,300
155	41.6	17,200	160	42.7	16,100	160	45.4	15,900	160	47.8	15,400
160	39.4	16,300	165	40.6	15,400	165	43.6	15,000	165	46.1	14,600
165	37.1	15,400	170	38.4	14,600	170	41.6	14,100	170	44.4	13,700
170	34.6	14,800	175	36.2	13,900	175	39.6	13,400	175	42.5	13,000
175	32.0	14,100	180	33.7	13,200	180	37.5	12,800	180	40.7	12,100
			185	31.2	12,600	185	35.3	11,900	185	38.7	11,500
						190	32.9	11,200	190	36.6	10,800
						195	30.4	10,800	195	34.5	10,100
									200	32.2	9,700
240' Boom			240' Boom			250' Boom			250' Boom		
Load Radius (ft)	Boom Angle (deg.)	360° Rated Load (lbs)	Load Radius (ft)	Boom Angle (deg.)	360° Rated Load (lbs)	Load Radius (ft)	Boom Angle (deg.)	360° Rated Load (lbs)	Load Radius (ft)	Boom Angle (deg.)	360° Rated Load (lbs)
46	80.4	76,100 *	130	58.8	21,800	47.7	80.4	70,100 *	135	58.9	20,300
50	79.4	73,000 *	135	57.4	20,500	50	79.9	68,100 *	140	57.5	19,000
55	78.2	68,800 *	140	56.0	19,200	55	78.7	64,400 *	145	56.2	17,900
60	77.0	64,800 *	145	54.5	18,100	60	77.5	60,600 *	150	54.8	16,800
65	75.8	61,100 *	150	53.0	17,000	65	76.3	57,300 *	155	53.3	15,900
70	74.5	55,600 *	155	51.5	16,100	70	75.2	54,000 *	160	51.9	15,000
75	73.3	50,300	160	50.0	15,200	75	74.0	50,300 *	165	50.4	14,100
80	72.0	45,900	165	48.4	14,300	80	72.8	45,600	170	48.9	13,200
85	70.8	42,100	170	46.8	13,400	85	71.6	41,900	175	47.4	12,300
90	69.5	38,600	175	45.1	12,600	90	70.3	38,600	180	45.8	11,700
95	68.2	35,700	180	43.4	11,900	95	69.1	35,500	185	44.1	10,800
100	66.9	33,100	185	41.6	11,200	100	67.9	32,800	190	42.5	10,100
105	65.6	30,600	190	39.8	10,400	105	66.6	30,400	195	40.7	9,500
110	64.3	28,700	195	37.8	9,900	110	65.4	28,400	200	38.9	9,000
115	62.9	26,700	200	35.8	9,300	115	64.1	26,500	205	37.0	8,400
120	61.6	24,900	205	33.7	8,600	120	62.8	24,700	210	35.1	7,900
125	60.2	23,400	210	31.5	8,200	125	61.5	23,100	215	33.0	7,300
						130	60.2	21,600	220	30.8	6,800

# STERLING CRANE

## CK2000-II Main Boom Rated Loads in Pounds

Refer to notes page 11

11 Counterweights (132,280 lbs) + 2 Low Weights (22,050 lbs x 2)

260' Boom			270' Boom			280' Boom					
Load Radius (ft)	Boom Angle (deg.)	360° Rated Load (lbs)	Load Radius (ft)	Boom Angle (deg.)	360° Rated Load (lbs)	Load Radius (ft)	Boom Angle (deg.)	360° Rated Load (lbs)			
49.3	80.4	63,900 *	51	80.4	63,900 *	52.7	80.4	58,400 *			
50	80.3	63,500 *	55	79.5	62,400 *	55	79.9	57,800 *			
55	79.1	59,700 *	60	78.5	60,600 *	60	78.9	56,000 *			
60	78.0	56,400 *	65	77.4	58,900 *	65	77.8	54,500 *			
65	76.9	53,100 *	70	76.3	54,700 *	70	76.8	52,900 *			
70	75.7	50,300 *	75	75.2	49,600 *	75	75.7	49,200 *			
75	74.6	47,400 *	80	74.1	45,000 *	80	74.7	44,800 *			
80	73.5	44,800 *	85	73.0	41,200	85	73.6	40,800 *			
85	72.3	41,400 *	90	71.9	37,900	90	72.5	37,500 *			
90	71.1	38,100	95	70.7	34,800	95	71.5	34,400			
95	70.0	35,300	100	69.6	32,200	100	70.4	31,700			
100	68.8	32,600	105	68.5	29,800	105	69.3	29,300			
105	67.6	30,200	110	67.3	27,800	110	68.2	27,300			
110	66.4	28,000	115	66.2	25,800	115	67.1	25,400			
115	65.2	26,000	120	65.0	24,000	120	65.9	23,600			
120	64.0	24,300	125	63.8	22,500	125	64.8	22,000			
125	62.7	22,700	130	62.6	20,900	130	63.7	20,500			
130	61.5	21,200	135	61.4	19,600	135	62.5	19,200			
135	60.2	19,800	140	60.2	18,300	140	61.4	17,900			
140	58.9	18,700	145	59.0	17,200	145	60.2	16,800			
145	57.6	17,600	150	57.7	16,100	150	59.0	15,700			
150	56.3	16,500	155	56.4	15,200	155	57.8	14,600			
155	55.0	15,400	160	55.2	14,100	160	56.6	13,700			
160	53.6	14,600	165	53.9	13,200	165	55.3	12,600			
165	52.2	13,700	170	52.5	12,300	170	54.1	11,700			
170	50.8	12,800	175	51.2	11,500	175	52.8	10,800			
175	49.4	11,900	180	49.8	10,800	180	51.5	10,100			
180	47.9	11,200	185	48.4	9,900	185	50.2	9,500			
185	46.4	10,400	190	46.9	9,300	190	48.8	8,600			
190	44.8	9,700	195	45.5	8,600	195	47.4	8,200			
195	43.2	9,000	200	43.9	7,900	200	46.0	7,500			
200	41.6	8,400	205	42.4	7,500	205	44.6	6,800			
205	39.9	7,900	210	40.8	6,800	210	43.1	6,400			
210	38.1	7,300	215	39.1	6,400	215	41.6	5,700			
215	36.3	6,800	220	37.4	6,000	220	40.0	5,300			
220	34.4	6,400	225	35.6	5,500	225	38.4	4,900			
225	32.4	6,000	230	33.7	5,100	230	36.7	4,400			
			235	31.7	4,600	235	34.9	4,000			

# STERLING CRANE

## CK2000-II Auxiliary Sheave Rating Loads in Pounds

Refer to notes page 11

11 Counterweight (132,280 + 2 Low Weights (22,050 lbs x 2))

50' Boom			60' Boom			70' Boom			80' Boom		
Load Radius (ft)	Boom Angle (deg.)	360° Rated Load (lbs)	Load Radius (ft)	Boom Angle (deg.)	360° Rated Load (lbs)	Load Radius (ft)	Boom Angle (deg.)	360° Rated Load (lbs)	Load Radius (ft)	Boom Angle (deg.)	360° Rated Load (lbs)
17	80.4	59,000 *	18.6	80.4	59,000 *	20.3	80.4	59,000 *	22	80.4	59,000 *
18	79.3	59,000 *	19	80.1	59,000 *	22	79.1	59,000 *	22	80.4	59,000 *
19	78.3	59,000 *	20	79.2	59,000 *	24	77.5	59,000 *	24	79.0	59,000 *
20	77.2	59,000 *	22	77.4	59,000 *	26	76.0	59,000 *	26	77.6	59,000 *
22	75.0	59,000 *	24	75.6	59,000 *	28	74.4	59,000 *	28	76.3	59,000 *
24	72.8	59,000 *	26	73.7	59,000 *	30	72.8	59,000 *	30	74.9	59,000 *
26	70.6	59,000 *	28	71.9	59,000 *	32	71.1	59,000 *	32	73.4	59,000 *
28	68.4	59,000 *	30	70.0	59,000 *	34	69.5	59,000 *	34	72.0	59,000 *
30	66.1	59,000 *	32	68.1	59,000 *	36	67.9	59,000 *	36	70.6	59,000 *
32	63.7	59,000 *	34	66.1	59,000 *	38	66.2	59,000 *	38	69.1	59,000 *
34	61.3	59,000 *	36	64.2	59,000 *	40	64.5	59,000 *	40	67.7	59,000 *
36	58.9	59,000 *	38	62.2	59,000 *	45	60.1	59,000 *	45	63.9	59,000 *
38	56.3	59,000 *	40	60.1	59,000 *	50	55.5	59,000 *	50	60.1	59,000 *
40	53.7	59,000 *	45	54.7	59,000 *	55	50.6	59,000 *	55	56.0	59,000 *
45	46.7	59,000 *	50	49.0	59,000 *	60	45.3	59,000 *	60	51.8	59,000 *
50	38.5	59,000 *	55	42.5	59,000 *	65	39.3	59,000 *	65	47.2	59,000 *
55	28.2	59,000 *	60	35.1	59,000 *	70	32.5	59,000 *	70	42.3	59,000 *
55.7	26.4	59,000 *	60.6	34.2	59,000 *	70.6	31.5	59,000 *	75	36.8	55,100
									80	30.3	50,700
									80.6	29.4	50,300
90' Boom			100' Boom			110' Boom			120' Boom		
Load Radius (ft)	Boom Angle (deg.)	360° Rated Load (lbs)	Load Radius (ft)	Boom Angle (deg.)	360° Rated Load (lbs)	Load Radius (ft)	Boom Angle (deg.)	360° Rated Load (lbs)	Load Radius (ft)	Boom Angle (deg.)	360° Rated Load (lbs)
23.7	80.4	59,000 *	25.3	80.4	59,000 *	27	80.4	59,000 *	28.7	80.4	59,000 *
24	80.2	59,000 *	26	80.0	59,000 *	28	79.9	59,000 *	30	79.8	59,000 *
26	79.0	59,000 *	28	78.9	59,000 *	30	78.9	59,000 *	32	78.8	59,000 *
28	77.7	59,000 *	30	77.8	59,000 *	32	77.9	59,000 *	34	77.9	59,000 *
30	76.5	59,000 *	32	76.7	59,000 *	34	76.8	59,000 *	36	77.0	59,000 *
32	75.2	59,000 *	34	75.5	59,000 *	36	75.8	59,000 *	38	76.0	59,000 *
34	74.0	59,000 *	36	74.4	59,000 *	38	74.8	59,000 *	40	75.1	59,000 *
36	72.7	59,000 *	38	73.3	59,000 *	40	73.7	59,000 *	45	72.7	59,000 *
38	71.4	59,000 *	40	72.1	59,000 *	45	71.1	59,000 *	50	70.2	59,000 *
40	70.2	59,000 *	45	69.2	59,000 *	50	68.4	59,000 *	55	67.8	59,000 *
45	66.9	59,000 *	50	66.2	59,000 *	55	65.7	59,000 *	60	65.3	59,000 *
50	63.5	59,000 *	55	63.2	59,000 *	60	62.9	59,000 *	65	62.7	59,000 *
55	60.1	59,000 *	60	60.1	59,000 *	65	60.1	59,000 *	70	60.1	59,000 *
60	56.5	59,000 *	65	56.8	59,000 *	70	57.1	59,000 *	75	57.3	53,800
65	52.7	59,000 *	70	53.4	59,000 *	75	54.0	54,200	80	54.5	49,600
70	48.7	59,000 *	75	49.9	54,700	80	50.8	49,800	85	51.6	45,600
75	44.4	54,900	80	46.1	50,300	85	47.5	46,100	90	48.6	42,300
80	39.8	50,500	85	42.1	46,300	90	43.9	42,500	95	45.4	39,500
85	34.6	46,700	90	37.7	43,000	95	40.1	39,700	100	42.0	36,800
85.5	34.0	46,300	95	32.8	40,100	100	35.9	37,000	105	38.3	34,400
			95.6	32.2	39,900	105	31.2	34,800	110	34.4	32,400
						105.6	30.6	34,600	115	29.9	30,400
									115.7	29.2	30,200

# STERLING CRANE

## CK2000-II Auxiliary Sheave Rating Loads in Pounds

Refer to notes page 11

11 Counterweight (132,280 + 2 Low Weights (22,050 lbs x 2))

130' Boom			140' Boom			150' Boom			160' Boom		
Load Radius (ft)	Boom Angle (deg.)	360° Rated Load (lbs)	Load Radius (ft)	Boom Angle (deg.)	360° Rated Load (lbs)	Load Radius (ft)	Boom Angle (deg.)	360° Rated Load (lbs)	Load Radius (ft)	Boom Angle (deg.)	360° Rated Load (lbs)
30.3	80.4	59,000 *	32	80.4	59,000 *	33.7	80.4	59,000 *	35.3	80.4	59,000 *
32	79.7	59,000 *	32	80.4	59,000 *	34	80.3	59,000 *	36	80.2	59,000 *
34	78.8	59,000 *	34	79.6	59,000 *	36	79.5	59,000 *	38	79.5	59,000 *
36	77.9	59,000 *	36	78.8	59,000 *	38	78.8	59,000 *	40	78.7	59,000 *
38	77.1	59,000 *	38	78.0	59,000 *	40	78.0	59,000 *	45	77.0	59,000 *
40	76.2	59,000 *	40	77.2	59,000 *	45	76.1	59,000 *	50	75.2	59,000 *
45	74.0	59,000 *	45	75.1	59,000 *	50	74.2	59,000 *	55	73.4	59,000 *
50	71.8	59,000 *	50	73.1	59,000 *	55	72.3	59,000 *	60	71.5	59,000 *
55	69.5	59,000 *	55	71.0	59,000 *	60	70.3	59,000 *	65	69.7	59,000 *
60	67.2	59,000 *	60	68.9	59,000 *	65	68.3	59,000 *	70	67.8	57,800
65	64.9	59,000 *	65	66.7	59,000 *	70	66.3	58,000	75	65.9	52,500
70	62.5	58,600	70	64.5	58,200	75	64.3	52,900	80	64.0	48,100
75	60.0	53,600	75	62.3	53,100	80	62.2	48,500	85	62.0	44,300
80	57.5	49,200	80	60.0	48,700	85	60.0	44,500	90	60.0	41,000
85	55.0	45,400	85	57.7	45,000	90	57.9	41,200	95	58.0	37,900
90	52.3	42,100	90	55.3	41,700	95	55.6	38,400	100	55.9	35,300
95	49.5	39,000	95	52.8	38,600	100	53.3	35,700	105	53.8	33,100
100	46.6	36,400	100	50.3	35,900	105	51.0	33,300	110	51.5	30,900
105	43.5	34,200	105	47.6	33,700	110	48.5	31,300	115	49.3	28,900
110	40.3	32,000	110	44.8	31,500	115	45.9	29,300	120	46.9	27,300
115	36.8	30,200	115	41.9	29,500	120	43.3	27,600	125	44.4	25,600
120	33.0	28,400	120	38.8	28,000	125	40.4	26,000	130	41.8	24,300
120.6	32.5	28,200	125	35.4	26,200	130	37.4	24,500	135	39.1	22,900
			130	31.7	24,900	135	34.2	23,100	140	36.2	21,600
			130.6	31.3	24,700	140	30.6	22,000	145	33.1	20,500
						140.6	30.2	21,800	150	29.6	19,400
									150.6	29.2	19,400
170' Boom			180' Boom			190' Boom			200' Boom		
Load Radius (ft)	Boom Angle (deg.)	360° Rated Load (lbs)	Load Radius (ft)	Boom Angle (deg.)	360° Rated Load (lbs)	Load Radius (ft)	Boom Angle (deg.)	360° Rated Load (lbs)	Load Radius (ft)	Boom Angle (deg.)	360° Rated Load (lbs)
37	80.4	59,000 *	38.7	80.4	59,000 *	40.3	80.4	59,000 *	42	80.4	59,000 *
38	80.1	59,000 *	40	80.0	59,000 *	45	79.0	59,000 *	45	79.5	59,000 *
40	79.4	59,000 *	45	78.4	59,000 *	50	77.5	59,000 *	50	78.1	59,000 *
45	77.7	59,000 *	50	76.8	59,000 *	55	76.0	59,000 *	55	76.7	59,000 *
50	76.0	59,000 *	55	75.2	59,000 *	60	74.5	59,000 *	60	75.2	59,000 *
55	74.3	59,000 *	60	73.6	59,000 *	65	72.9	59,000 *	65	73.8	59,000 *
60	72.6	59,000 *	65	72.0	59,000 *	70	71.4	56,700	70	72.3	56,200
65	70.9	59,000 *	70	70.3	56,900	75	69.8	51,400	75	70.9	51,100
70	69.2	57,300	75	68.7	51,800	80	68.2	47,000	80	69.4	46,500
75	67.4	52,000	80	67.0	47,400	85	66.6	43,200	85	67.9	42,800
80	65.6	47,600	85	65.3	43,400	90	65.0	39,900	90	66.3	39,500
85	63.8	43,900	90	63.6	40,100	95	63.4	36,800	95	64.8	36,400
90	61.9	40,600	95	61.8	37,300	100	61.7	34,200	100	63.2	33,700
95	60.0	37,500	100	60.0	34,600	105	60.0	32,000	105	61.6	31,500
100	58.1	34,800	105	58.2	32,200	110	58.3	29,800	110	60.0	29,300
105	56.1	32,600	110	56.4	30,200	115	56.6	27,800	115	58.4	27,300
110	54.1	30,400	115	54.5	28,200	120	54.8	26,000	120	56.7	25,600
115	52.1	28,400	120	52.5	26,500	125	52.9	24,500	125	55.0	24,000
120	49.9	26,700	125	50.5	24,900	130	51.0	22,900	130	53.3	22,500
125	47.7	25,100	130	48.5	23,400	135	49.1	21,600	135	51.5	21,200
130	45.4	23,800	135	46.3	22,000	140	47.1	20,500	140	49.7	20,100
135	43.1	22,500	140	44.1	20,700	145	45.0	19,400	145	47.8	19,000
140	40.6	21,200	145	41.8	19,600	150	42.9	18,300	150	45.9	17,900
145	37.9	20,100	150	39.4	18,500	155	40.6	17,200	155	43.8	16,800
150	35.1	19,000	155	36.8	17,600	160	38.3	16,300	160	41.8	15,900
155	32.1	18,100	160	34.1	16,800	165	35.8	15,400	165	39.6	15,000
155.6	31.7	17,900	165	31.1	15,900	170	33.2	14,800	170	37.3	14,300
			165.6	30.8	15,900	170.6	32.8	14,600	175	34.9	13,400
									180	32.3	12,800
									180.6	32.0	12,800



# STERLING CRANE

## CK2000-II Auxialiary Sheave Rating Loads in Pounds

Refer to notes page 11

11 Counterweight (132,280 + 2 Low Weights (22,050 lbs x 2))

210' Boom			220' Boom			230' Boom			240' Boom		
Load Radius (ft)	Boom Angle (deg.)	360° Rated Load (lbs)	Load Radius (ft)	Boom Angle (deg.)	360° Rated Load (lbs)	Load Radius (ft)	Boom Angle (deg.)	360° Rated Load (lbs)	Load Radius (ft)	Boom Angle (deg.)	360° Rated Load (lbs)
43.7	80.4	59,000 *	45.3	80.4	59,000 *	47	80.4	59,000 *	48.7	80.4	58,200
45	80.0	59,000 *	50	79.2	59,000 *	50	79.7	59,000 *	50	80.1	57,800
50	78.7	59,000 *	55	77.9	59,000 *	55	78.4	59,000 *	55	78.9	56,200
55	77.3	59,000 *	60	76.6	59,000 *	60	77.2	59,000 *	60	77.7	54,700
60	75.9	59,000 *	65	75.3	59,000 *	65	75.9	58,600	65	76.5	53,100
65	74.6	59,000 *	70	73.9	55,800	70	74.6	55,300	70	75.3	51,600
70	73.2	56,000	75	72.6	50,500	75	73.4	50,300	75	74.1	49,800
75	71.8	50,900	80	71.3	46,100	80	72.1	45,900	80	72.9	45,400
80	70.4	46,500	85	69.9	42,300	85	70.8	41,900	85	71.6	41,400
85	68.9	42,500	90	68.6	39,000	90	69.5	38,600	90	70.4	38,100
90	67.5	39,200	95	67.2	35,900	95	68.2	35,700	95	69.1	35,300
95	66.0	36,400	100	65.8	33,300	100	66.9	33,100	100	67.9	32,600
100	64.6	33,700	105	64.4	30,900	105	65.5	30,600	105	66.6	30,200
105	63.1	31,300	110	62.9	28,900	110	64.2	28,400	110	65.3	28,000
110	61.6	29,100	115	61.5	26,900	115	62.8	26,500	115	64.0	26,000
115	60.0	27,300	120	60.0	25,100	120	61.4	24,700	120	62.7	24,300
120	58.5	25,600	125	58.5	23,600	125	60.0	23,100	125	61.4	22,700
125	56.9	23,800	130	57.0	22,000	130	58.6	21,800	130	60.0	21,400
130	55.3	22,500	135	55.5	20,700	135	57.2	20,300	135	58.7	19,800
135	53.6	21,200	140	53.9	19,400	140	55.7	19,200	140	57.3	18,700
140	51.9	19,800	145	52.3	18,300	145	54.2	18,100	145	55.9	17,600
145	50.2	18,700	150	50.7	17,200	150	52.6	17,000	150	54.4	16,500
150	48.4	17,600	155	49.0	16,300	155	51.1	15,900	155	53.0	15,400
155	46.6	16,800	160	47.2	15,400	160	49.5	15,000	160	51.5	14,600
160	44.7	15,700	165	45.5	14,600	165	47.8	14,100	165	49.9	13,700
165	42.7	14,800	170	43.6	13,700	170	46.2	13,200	170	48.4	12,800
170	40.7	14,100	175	41.7	13,000	175	44.4	12,300	175	46.8	11,900
175	38.6	13,200	180	39.7	12,100	180	42.6	11,700	180	45.1	11,000
180	36.4	12,600	185	37.7	11,500	185	40.8	11,000	185	43.5	10,400
185	34.0	11,900	190	35.5	10,800	190	38.8	10,400	190	41.7	9,700
190	31.5	11,200	195	33.2	10,100	195	36.8	9,700	195	39.9	9,000
190.6	31.2	11,000	200	30.8	9,500	200	34.7	9,000	200	38.0	8,400
			200.7	30.4	9,500	205	32.5	8,400	205	36.0	7,900
						205.6	32.2	8,400	210	34.0	7,300
									215	31.8	6,800
									215.6	31.5	6,600



# STERLING CRANE

## CK2000-II Auxiliary Sheave Rating Loads in Pounds

Refer to notes page 11

11 Counterweight (132,280 + 2 Low Weights (22,050 lbs x 2))

250' Boom		260' Boom			270' Boom					
Load Radius (ft)	Boom Angle (deg.)	360° Rated Load (lbs)	Load Radius (ft)	Boom Angle (deg.)	360° Rated Load (lbs)	Load Radius (ft)	Boom Angle (deg.)	360° Rated Load (lbs)		
50.3	80.4	52,700	52	80.4	47,600	53.7	80.4	47,400		
55	79.3	51,100	55	79.7	46,700	55	80.1	47,200		
60	78.2	49,800	60	78.6	45,400	60	79.1	46,100		
65	77.0	48,300	65	77.5	44,100	65	78.0	44,800		
70	75.9	47,000	70	76.4	42,800	70	76.9	43,900		
75	74.7	45,600	75	75.3	41,400	75	75.9	42,800		
80	73.5	44,500	80	74.2	40,300	80	74.8	41,700		
85	72.4	41,400	85	73.1	39,200	85	73.7	40,800		
90	71.2	37,900	90	71.9	37,700	90	72.6	37,300		
95	70.0	35,100	95	70.8	34,600	95	71.5	34,400		
100	68.8	32,400	100	69.6	32,000	100	70.4	31,700		
105	67.6	30,000	105	68.5	29,500	105	69.3	29,300		
110	66.3	27,800	110	67.3	27,600	110	68.2	27,100		
115	65.1	26,000	115	66.1	25,600	115	67.0	25,400		
120	63.9	24,300	120	64.9	23,800	120	65.9	23,600		
125	62.6	22,500	125	63.7	22,300	125	64.7	21,800		
130	61.3	21,200	130	62.5	20,700	130	63.6	20,500		
135	60.0	19,800	135	61.3	19,400	135	62.4	19,200		
140	58.7	18,500	140	60.0	18,100	140	61.2	17,900		
145	57.4	17,400	145	58.8	17,000	145	60.0	16,800		
150	56.0	16,300	150	57.5	15,900	150	58.8	15,700		
155	54.7	15,200	155	56.2	15,000	155	57.6	14,600		
160	53.3	14,300	160	54.9	13,900	160	56.3	13,400		
165	51.8	13,400	165	53.5	13,000	165	55.1	12,600		
170	50.4	12,600	170	52.2	12,100	170	53.8	11,700		
175	48.9	11,700	175	50.8	11,200	175	52.5	10,800		
180	47.4	10,800	180	49.3	10,400	180	51.1	9,900		
185	45.8	10,100	185	47.9	9,700	185	49.8	9,300		
190	44.2	9,500	190	46.4	9,000	190	48.4	8,600		
195	42.5	8,800	195	44.9	8,400	195	46.9	7,900		
200	40.8	8,200	200	43.3	7,700	200	45.5	7,300		
205	39.1	7,500	205	41.7	7,100	205	44.0	6,600		
210	37.2	7,100	210	40.0	6,600	210	42.5	6,200		
215	35.3	6,600	215	38.3	6,200	215	40.9	5,700		
220	33.3	6,000	220	36.5	5,500	220	39.2	5,100		
225	31.1	5,500	225	34.6	5,100	225	37.5	4,600		
225.7	30.8	5,500	230	32.6	4,600	230	35.8	4,200		
			230.5	32.4	4,600					