

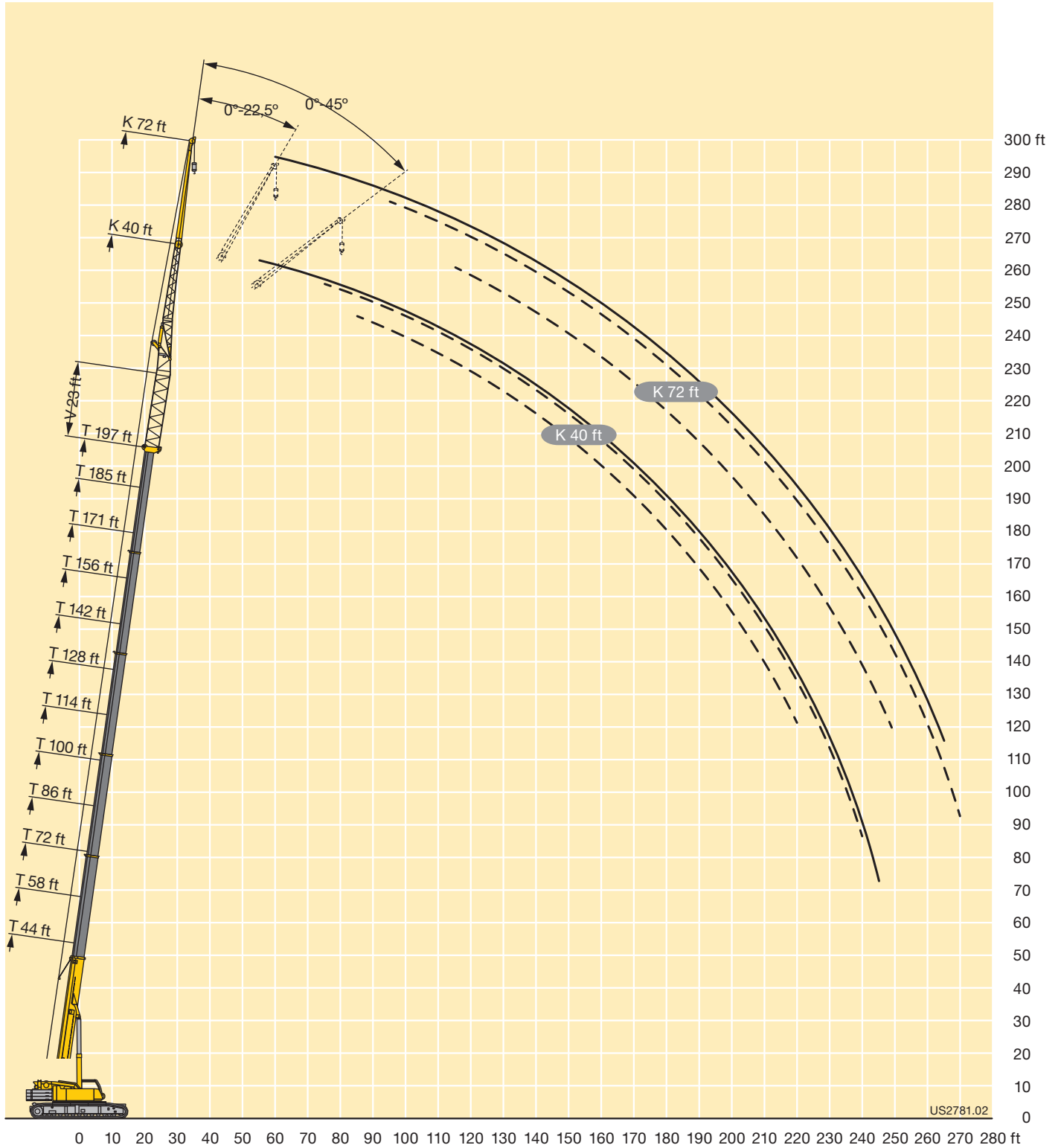


LIFTING CHARTS - Crawler Cranes

LIEBHERR MODEL LTR 1220 - 250 TON CAPACITY

Lifting heights

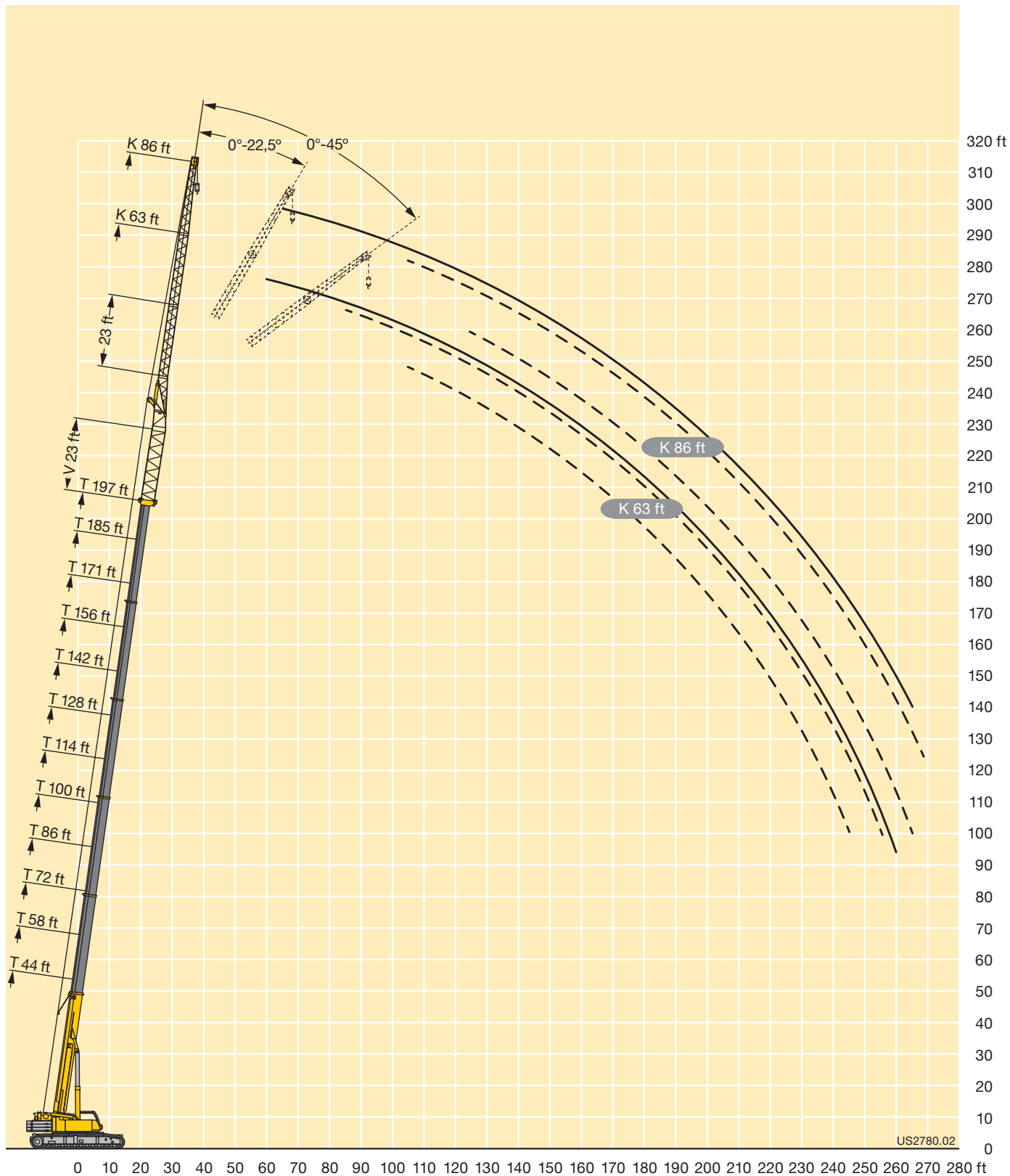
TVNZK



STERLING CRANE

Lifting heights

TVNZK

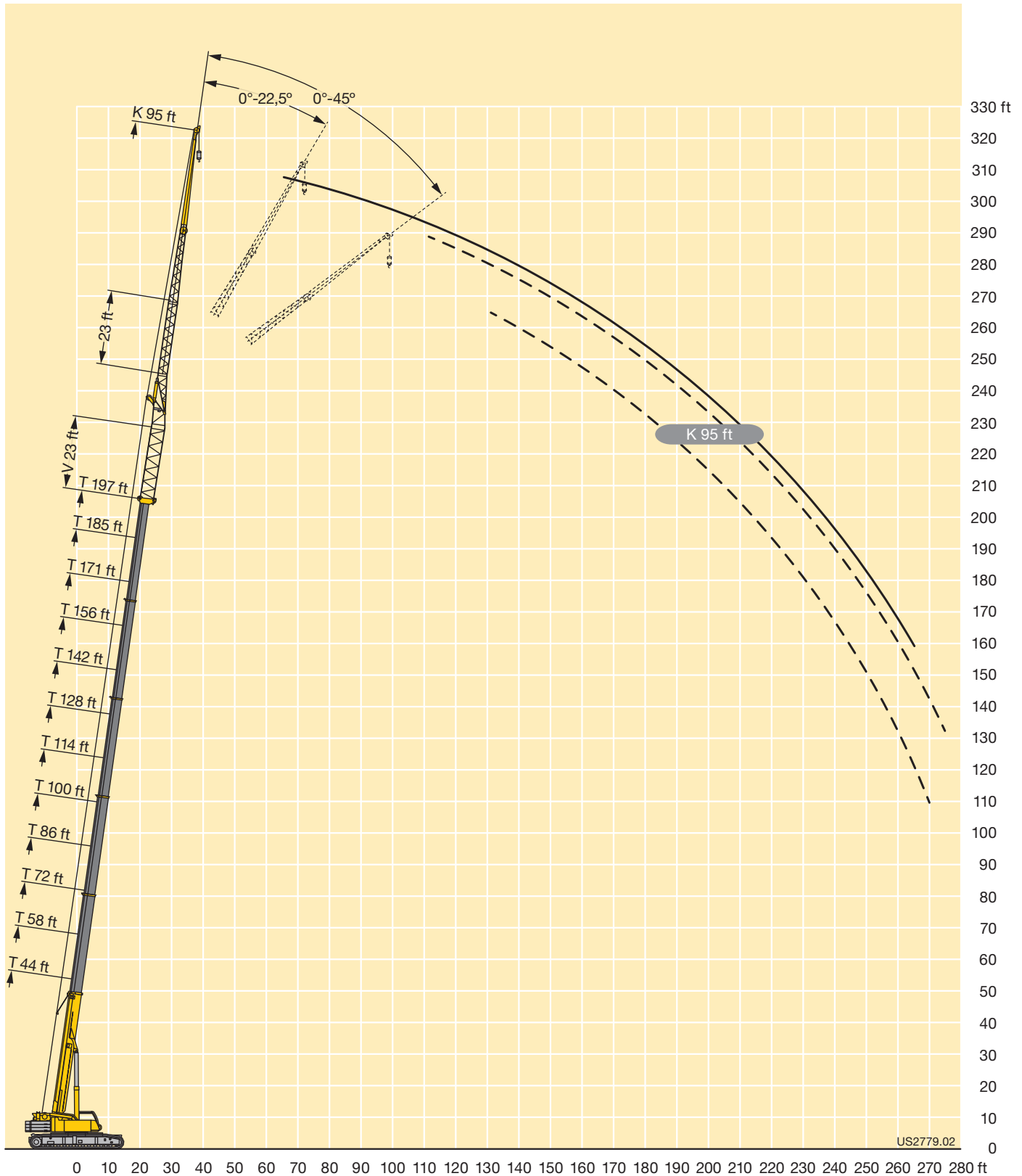


US2780.02

STERLING CRANE

Lifting heights

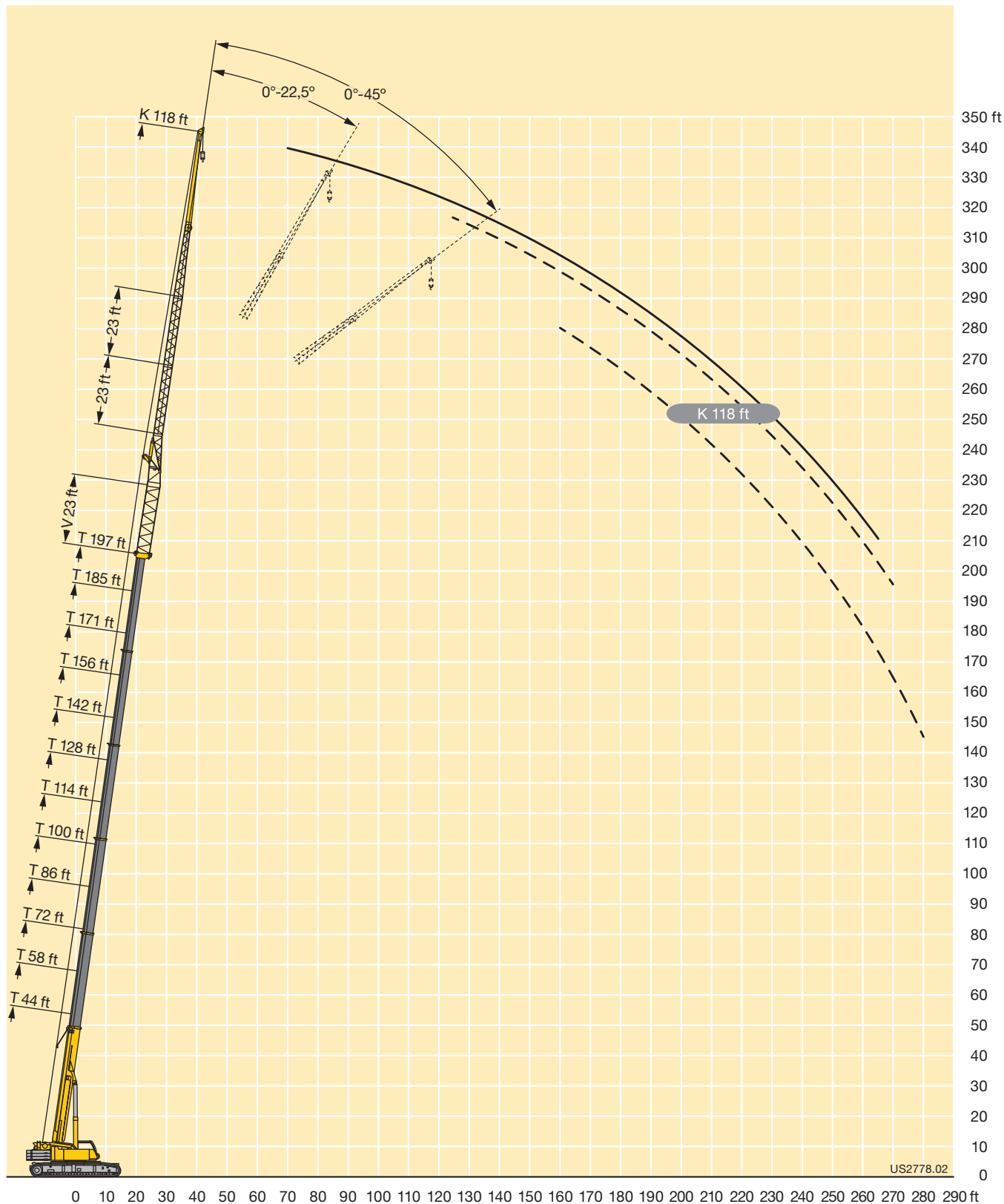
TVNZK



STERLING CRANE

Lifting heights


TVNZK



STERLING CRANE

Lifting capacities Forces de levage

TVNZK



ft	44 ft + 23 ft			58 ft + 23 ft			72 ft + 23 ft			86 ft + 23 ft			100 ft + 23 ft			114 ft + 23 ft			ft
	40 ft			40 ft			40 ft			40 ft			40 ft			40 ft			
	0°	22.5°	45°	0°	22.5°	45°	0°	22.5°	45°	0°	22.5°	45°	0°	22.5°	45°	0°	22.5°	45°	
11	46.1																		11
12	46.1																		12
13	46.1																		13
14	46.1			46.1															14
15	46.1			46.1															15
16	46.1			46.1															16
17	46.1			46.1															17
18	46.1			46.1															18
19	46.1			46.1			44.5												19
20	46.1			46.1			44.4												20
22	46.1			46.1			44.3			40.6									22
24	46.1			46.1			44.1			40.6									24
26	46.1	37.8		45.9			43.8			40.5			36						26
28	45.4	36.3		45.1			43			40.3			36						28
30	43.6	34.9		44	35.9		41.8			40.1			35.9			33.3			30
32	41.8	33.6		42.5	34.7		40.7			39.5			35.8			33.3			32
34	40.1	32.4		41	33.5		39.5			38.6			35.5			33.2			34
36	38.4	31.3	23.2	39.6	32.5		38.4	32.4		37.7			35.2			33.1			36
38	36.8	30.3	23.2	38.2	31.5		37.2	31.6		36.8			34.6			32.9			38
40	35.3	29.4	23.2	36.8	30.5	23.2	36.1	30.7		35.8	30.4		33.9			32.6			40
45	32.1	27.3	22.7	33.7	28.4	23.1	33.5	28.8	23.2	33.5	28.7		32.1	27.8		31.3	27.2		45
50	29.1	25.4	21.8	31.1	26.7	22.3	30.8	27	22.5	31.5	27.1		30.1	26.5		29.8	26.1		50
55	26.7	23.9	21	28.7	25.2	21.5	28.2	25.2	21.8	29.5	25.7	22.1	27.9	25.2	22.2	28.2	25		55
60	24.5	22.4	20.3	26.6	23.7	20.8	26.1	23.5	21.1	27.5	24.3	21.4	25.9	24.1	21.6	26.5	23.9	21.5	60
65	22.6	20.8	19.8	24.7	22.2	20.3	24	22	20.6	25.7	22.8	20.9	24.1	22.8	21	24.8	23	20.9	65
70	20.8	19.4	19.2	23	20.9	19.8	22.3	20.6	19.8	24	21.6	20.3	22.4	21.5	20.3	23.2	21.9	20.2	70
75	19.3	18.1	18.3	21.5	19.6	19.2	20.6	19.3	18.9	22.4	20.4	19.5	21	20.1	19.5	21.9	20.7	19.6	75
80	17.9	17	17.4	20.1	18.5	18.5	19.2	18.2	17.9	21	19.3	18.6	19.7	18.9	18.7	20.6	19.6	18.9	80
85	16.7	16	16.6	18.8	17.5	17.6	18	17.2	17	19.7	18.3	17.8	18.4	17.9	17.7	19.5	18.5	18.2	85
90	15.5	15.1	15.6	17.6	16.6	16.9	16.8	16.3	16.2	18.6	17.4	17	17.3	16.9	16.8	18.4	17.6	17.3	90
95	14.5	14.4		16.6	15.8	16.2	15.8	15.4	15.5	17.5	16.6	16.3	16.3	15.9	15.9	17.3	16.7	16.5	95
100				15.7	15.1	12.1	14.9	14.6	14.8	16.6	15.9	15.7	15.4	15	15.1	16.4	15.9	15.7	100
105				14.8	14.5		14	13.8	14.1	15.7	15.2	15.1	14.5	14.2	14.3	15.6	15.1	15	105
110				14	13.9		13.3	13.1	13.4	14.9	14.5	14.6	13.7	13.5	13.6	14.8	14.4	14.4	110
115							12.6	12.5		14.2	13.9	14	13	12.8	13	14.1	13.7	13.7	115
120							11.9	11.9		13.5	13.3		12.3	12.2	12.4	13.4	13.1	13.2	120
125							11.4	11.5		12.9	12.7		11.7	11.6	11.8	12.8	12.5	12.6	125
130										12.4	12.3		11.1	11.1	11.2	12.2	12	12.1	130
135										11.9	11.9		10.6	10.5		11.7	11.5	11.6	135
140										11.5			10.1	10.1		11.2	11	11.2	140
145													9.7	9.7		10.7	10.6	10.7	145
150													9.4	9.4		10.3	10.2		150
155													9.1			9.9	9.9		155
160																9.6	9.6		160
165																9.4	9.4		165
170																5.1			170

t_242_01400_00_000

STERLING CRANE

Lifting capacities Forces de levage

TVNZK


ft	128 ft + 23 ft			142 ft + 23 ft			156 ft + 23 ft			171 ft + 23 ft			185 ft + 23 ft			197 ft + 23 ft			ft
	40 ft			40 ft			40 ft			40 ft			40 ft			40 ft			
	0°	22.5°	45°	0°	22.5°	45°	0°	22.5°	45°	0°	22.5°	45°	0°	22.5°	45°	0°	22.5°	45°	
36	30																		36
38	29.9																		38
40	29.8			27.8															40
45	29.3			27.5			25.1			22.8									45
50	28.3			27.2			25			22.7									50
55	27.2	24.1		26.4			24.8			22.6			18.9			16.5			55
60	25.9	23.3		25.4	22.8		24.2	21.2		22.5			18.8			16.4			60
65	24.5	22.4	20.3	24.4	22.1	20	23.5	20.7		22.2	19.8		18.8	18.6		16.4			65
70	23.2	21.6	19.8	23.3	21.4	19.4	22.6	20.1		21.8	19.3		18.6	18.3		16.4			70
75	21.9	20.6	19.2	22.1	20.6	18.9	21.7	19.6	18.3	21.2	18.9	17.3	18.4	17.9		16.3	16.2		75
80	20.7	19.6	18.6	21	19.7	18.4	20.8	18.9	17.8	20.6	18.4	16.8	18	17.6	15.7	16.2	15.8		80
85	19.5	18.7	18	20	18.8	18	19.8	18.2	17.2	19.7	17.9	16.4	17.6	17.2	15.4	15.8	15.4	13.9	85
90	18.4	17.8	17.2	18.9	18	17.3	18.9	17.5	16.8	18.9	17.3	16	17.2	16.8	15.1	15.3	14.9	13.6	90
95	17.4	16.9	16.5	18	17.2	16.6	18	16.8	16.3	18	16.7	15.6	16.8	16.3	14.7	14.8	14.4	13.4	95
100	16.4	16.1	15.8	17.1	16.5	16	17.2	16.2	15.8	17.3	16.1	15.2	16.2	15.8	14.4	14.2	13.9	13.1	100
105	15.5	15.4	15.2	16.2	15.8	15.4	16.4	15.6	15.3	16.5	15.6	14.8	15.7	15.2	14.1	13.7	13.4	12.8	105
110	14.7	14.6	14.6	15.4	15.1	14.8	15.7	15	14.7	15.9	15	14.4	15.2	14.8	13.7	13.2	12.9	12.6	110
115	13.9	13.9	14	14.6	14.5	14.3	14.9	14.4	14.3	15.2	14.5	14	14.7	14.3	13.4	12.8	12.5	12.3	115
120	13.1	13.2	13.3	14	13.8	13.8	14.2	13.9	13.8	14.6	14	13.7	14.1	13.8	13.1	12.3	12.1	12	120
125	12.5	12.5	12.7	13.3	13.2	13.2	13.6	13.3	13.3	14	13.5	13.3	13.6	13.4	12.8	11.8	11.6	11.6	125
130	11.8	11.9	12.1	12.6	12.6	12.7	12.9	12.8	12.8	13.4	13	13	13.1	12.9	12.5	11.3	11.2	11.3	130
135	11.2	11.3	11.5	12.1	12	12.1	12.3	12.3	12.3	12.8	12.5	12.5	12.6	12.5	12.2	10.9	10.8	10.9	135
140	10.7	10.8	11	11.5	11.5	11.6	11.6	11.8	11.9	12.2	12	12.1	12.2	12	11.9	10.4	10.5	10.6	140
145	10.2	10.2	10.4	11	11	11.1	11.1	11.3	11.4	11.7	11.6	11.7	11.7	11.6	11.6	10	10.1	10.2	145
150	9.7	9.8	10	10.5	10.5	10.7	10.5	10.8	10.9	11.1	11.1	11.3	11.2	11.2	11.3	9.6	9.7	9.9	150
155	9.3	9.4	9.6	10	10.1	10.2	10	10.2	10.4	10.6	10.7	10.8	10.8	10.8	10.9	9.2	9.4	9.5	155
160	9	9		9.7	9.7	9.8	9.6	9.8	9.9	10.2	10.3	10.4	10.3	10.4	10.6	8.8	9	9.2	160
165	8.6	8.7		9.3	9.3	9.5	9.2	9.4	9.5	9.7	9.9	10	9.9	10	10.2	8.5	8.7	8.9	165
170	8.3	8.4		9	9	9.2	8.8	9	9.1	9.4	9.5	9.6	9.6	9.7	9.8	8.2	8.4	8.5	170
175	8	8.1		8.7	8.8		8.4	8.6	8.8	9	9.1	9.3	9.3	9.4	9.5	7.9	8.1	8.2	175
180	7.8	7.8		8.4	8.5		8.1	8.3	8.4	8.7	8.8	8.9	9	9.1	9.2	7.6	7.7	7.9	180
185				8.2	8.2		7.8	8	8.1	8.4	8.5	8.6	8.7	8.8	8.9	7.3	7.4	7.6	185
190				8	8		7.5	7.7		8.1	8.2	8.3	8.3	8.5	8.6	7	7.1	7.3	190
195				7.4			7.2	7.3		7.8	7.9	8	7.7	8.2	8.3	6.8	6.9	7	195
200							6.9	7		7.5	7.6		7.1	7.6	7.7	6.5	6.6	6.7	200
205							6.6	6.8		7.2	7.4		6.6	7	7.1	6.2	6.4	6.5	205
210							4.4			7	7.1		6	6.4	6.5	5.8	6.1	6.2	210
215										6.5	6.8		5.6	5.9		5.3	5.8	5.8	215
220										4.9			5.1	5.4		4.8	5.2	5.3	220
225													4.6	4.9		4.3	4.7		225
230													4.1	4.3		3.8	4.2		230
235													2.1			3.4	3.7		235
240																2.9	3.2		240
245																1.8			245

t_242_01400_00_000

STERLING CRANE

Lifting capacities Forces de levage

TVNZK



ft	44 ft + 23 ft			58 ft + 23 ft			72 ft + 23 ft			86 ft + 23 ft			100 ft + 23 ft			114 ft + 23 ft			ft
	40 ft			40 ft			40 ft			40 ft			40 ft			40 ft			
	0°	22.5°	45°	0°	22.5°	45°	0°	22.5°	45°	0°	22.5°	45°	0°	22.5°	45°	0°	22.5°	45°	
11	46.1																		11
12	46.1																		12
13	46.1																		13
14	46.1			46.1															14
15	46.1			46.1															15
16	46.1			46.1															16
17	46.1			46.1															17
18	46.1			46.1															18
19	46.1			46.1			44.5												19
20	46.1			46.1			44.4												20
22	46.1			46.1			44.3			40.6									22
24	46.1			46.1			44.1			40.6									24
26	46.1	37.8		45.9			43.8			40.5			36						26
28	45.4	36.3		45.1			43			40.3			36						28
30	43.6	34.9		44	35.9		41.8			40.1			35.9			33.3			30
32	41.8	33.6		42.5	34.7		40.7			39.5			35.8			33.3			32
34	40.1	32.4		41	33.5		39.5			38.6			35.5			33.2			34
36	38.4	31.3	23.2	39.6	32.5		38.4	32.4		37.7			35.2			33.1			36
38	36.8	30.3	23.2	38.2	31.5		37.2	31.6		36.8			34.6			32.9			38
40	35.3	29.4	23.2	36.8	30.5	23.2	36.1	30.7		35.8	30.4		33.9			32.6			40
45	32.1	27.3	22.7	33.7	28.4	23.1	33.5	28.8	23.2	33.5	28.7		32.1	27.8		31.3	27.2		45
50	29.1	25.4	21.8	31.1	26.7	22.3	30.8	27	22.5	31.5	27.1		30.1	26.5		29.8	26.1		50
55	26.7	23.9	21	28.7	25.2	21.5	28.2	25.2	21.8	29.5	25.7	22.1	27.9	25.2	22.2	28.2	25		55
60	24.5	22.4	20.3	26.6	23.7	20.8	26.1	23.5	21.1	27.5	24.3	21.4	25.9	24.1	21.6	26.5	23.9	21.5	60
65	22.6	20.8	19.8	24.7	22.2	20.3	24	22	20.6	25.7	22.8	20.9	24.1	22.8	21	24.8	23	20.9	65
70	20.8	19.4	19.2	23	20.9	19.8	22.3	20.6	19.8	24	21.6	20.3	22.4	21.5	20.3	23.2	21.9	20.2	70
75	19.3	18.1	18.3	21.5	19.6	19.2	20.6	19.3	18.9	22.4	20.4	19.5	21	20.1	19.5	21.9	20.7	19.6	75
80	17.9	17	17.4	20.1	18.5	18.5	19.2	18.2	17.9	21	19.3	18.6	19.7	18.9	18.7	20.6	19.6	18.9	80
85	16.7	16	16.6	18.8	17.5	17.6	18	17.2	17	19.7	18.3	17.8	18.4	17.9	17.7	19.5	18.5	18.2	85
90	15.5	15.1	15.6	17.6	16.6	16.9	16.8	16.3	16.2	18.6	17.4	17	17.3	16.9	16.8	18.4	17.6	17.3	90
95	14.5	14.4		16.6	15.8	16.2	15.8	15.4	15.5	17.5	16.6	16.3	16.3	15.9	15.9	17.3	16.7	16.5	95
100				15.7	15.1	12.1	14.9	14.6	14.8	16.6	15.9	15.7	15.4	15	15.1	16.4	15.9	15.7	100
105				14.8	14.5		14	13.8	14.1	15.7	15.2	15.1	14.5	14.2	14.3	15.6	15.1	15	105
110				14	13.9		13.3	13.1	13.4	14.9	14.5	14.6	13.7	13.5	13.6	14.8	14.4	14.4	110
115							12.6	12.5		14.2	13.9	14	13	12.8	13	14.1	13.7	13.7	115
120							11.9	11.9		13.5	13.3		12.3	12.2	12.4	13.4	13.1	13.2	120
125							11.4	11.5		12.9	12.7		11.7	11.6	11.8	12.8	12.5	12.6	125
130										12.4	12.3		11.1	11.1	11.2	12.2	12	12.1	130
135										11.9	11.9		10.6	10.5		11.7	11.5	11.6	135
140										11.5			10.1	10.1		11.2	11	11.2	140
145													9.7	9.7		10.7	10.6	10.7	145
150													9.4	9.4		10.3	10.2		150
155													9.1			9.9	9.9		155
160																9.6	9.6		160
165																9.4	9.4		165
170																5.1			170

t_242_01410_00_000

STERLING CRANE

Lifting capacities Forces de levage

TVNZK



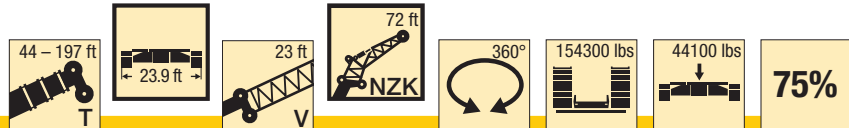
ft	128 ft + 23 ft			142 ft + 23 ft			156 ft + 23 ft			171 ft + 23 ft			185 ft + 23 ft			197 ft + 23 ft			ft
	40 ft			40 ft			40 ft			40 ft			40 ft			40 ft			
	0°	22.5°	45°	0°	22.5°	45°	0°	22.5°	45°	0°	22.5°	45°	0°	22.5°	45°	0°	22.5°	45°	
36	30																		36
38	29.9																		38
40	29.8			27.8															40
45	29.3			27.5			25.1			22.8									45
50	28.3			27.2			25			22.7									50
55	27.2	24.1		26.4			24.8			22.6			18.9			16.5			55
60	25.9	23.3		25.4	22.8		24.2	21.2		22.5			18.8			16.4			60
65	24.5	22.4	20.3	24.4	22.1	20	23.5	20.7		22.2	19.8		18.8	18.6		16.4			65
70	23.2	21.6	19.8	23.3	21.4	19.4	22.6	20.1		21.8	19.3		18.6	18.3		16.4			70
75	21.9	20.6	19.2	22.1	20.6	18.9	21.7	19.6	18.3	21.2	18.9	17.3	18.4	17.9		16.3	16.2		75
80	20.7	19.6	18.6	21	19.7	18.4	20.8	18.9	17.8	20.6	18.4	16.8	18	17.6	15.7	16.2	15.8		80
85	19.5	18.7	18	20	18.8	18	19.8	18.2	17.2	19.7	17.9	16.4	17.6	17.2	15.4	15.8	15.4	13.9	85
90	18.4	17.8	17.2	18.9	18	17.3	18.9	17.5	16.8	18.9	17.3	16	17.2	16.8	15.1	15.3	14.9	13.6	90
95	17.4	16.9	16.5	18	17.2	16.6	18	16.8	16.3	18	16.7	15.6	16.8	16.3	14.7	14.8	14.4	13.4	95
100	16.4	16.1	15.8	17.1	16.5	16	17.2	16.2	15.8	17.3	16.1	15.2	16.2	15.8	14.4	14.2	13.9	13.1	100
105	15.5	15.4	15.2	16.2	15.8	15.4	16.4	15.6	15.3	16.5	15.6	14.8	15.7	15.2	14.1	13.7	13.4	12.8	105
110	14.7	14.6	14.6	15.4	15.1	14.8	15.7	15	14.7	15.9	15	14.4	15.2	14.8	13.7	13.2	12.9	12.6	110
115	13.9	13.9	14	14.6	14.5	14.3	14.9	14.4	14.3	15.2	14.5	14	14.7	14.3	13.4	12.8	12.5	12.3	115
120	13.1	13.2	13.3	14	13.8	13.8	14.2	13.9	13.8	14.6	14	13.7	14.1	13.8	13.1	12.3	12.1	12	120
125	12.5	12.5	12.7	13.3	13.2	13.2	13.6	13.3	13.3	14	13.5	13.3	13.6	13.4	12.8	11.8	11.6	11.6	125
130	11.8	11.9	12.1	12.6	12.6	12.7	12.9	12.8	12.8	13.4	13	13	13.1	12.9	12.5	11.3	11.2	11.3	130
135	11.2	11.3	11.5	12.1	12	12.1	12.3	12.3	12.3	12.8	12.5	12.5	12.6	12.5	12.2	10.9	10.8	10.9	135
140	10.7	10.8	11	11.5	11.5	11.6	11.6	11.8	11.9	12.2	12	12.1	12.2	12	11.9	10.4	10.5	10.6	140
145	10.2	10.2	10.4	11	11	11.1	11.1	11.3	11.4	11.7	11.6	11.7	11.7	11.6	11.6	10	10.1	10.2	145
150	9.7	9.8	10	10.5	10.5	10.7	10.5	10.8	10.9	11.1	11.1	11.3	11.1	11.2	11.3	9.6	9.7	9.9	150
155	9.3	9.4	9.6	10	10.1	10.2	10	10.2	10.4	10.6	10.7	10.8	10.3	10.8	10.9	9.2	9.4	9.5	155
160	9	9		9.7	9.7	9.8	9.6	9.8	9.9	10.2	10.3	10.4	9.4	10.3	10.6	8.8	9	9.2	160
165	8.6	8.7		9.3	9.3	9.5	9.2	9.4	9.5	9.5	9.9	10	8.5	9.5	10	8.2	8.7	8.9	165
170	8.3	8.4		9	9	9.2	8.8	9	9.1	8.7	9.5	9.6	7.7	8.6	9.1	7.5	8.3	8.5	170
175	8	8.1		8.7	8.8		8.4	8.6	8.8	8	8.9	9.1	7	7.8	8.3	6.7	7.6	8.1	175
180	7.8	7.8		8.4	8.5		8.1	8.3	8.4	7.3	8.2	8.4	6.3	7	7.5	6	6.9	7.3	180
185				8.2	8.2		7.6	8	8.1	6.6	7.4	7.7	5.6	6.3	6.7	5.4	6.2	6.6	185
190				8	8		7	7.6		6	6.7	6.9	5	5.7	5.9	4.8	5.5	5.8	190
195				7.4			6.5	6.9		5.4	6.1	6.2	4.4	5	5.3	4.2	4.8	5.2	195
200							5.9	6.3		4.9	5.5		3.8	4.4	4.6	3.6	4.2	4.5	200
205							5.5	5.7		4.4	4.9		3.3	3.8	4	3.1	3.6	3.9	205
210							4.4			3.9	4.3		2.8	3.3	3.3	2.6	3.1	3.3	210
215										3.5	3.8		2.3	2.7		2.1	2.6	2.7	215
220										3.1			1.9	2.2		1.6	2.1	2.1	220
225													1.4	1.8		1.5			225

t_242_01410_00_000

STERLING CRANE

Lifting capacities Forces de levage

TVNZK



ft	44 ft + 23 ft			58 ft + 23 ft			72 ft + 23 ft			86 ft + 23 ft			100 ft + 23 ft			114 ft + 23 ft			ft
	72 ft			72 ft			72 ft			72 ft			72 ft			72 ft			
	0°	22.5°	45°	0°	22.5°	45°	0°	22.5°	45°	0°	22.5°	45°	0°	22.5°	45°	0°	22.5°	45°	
15	20.3																		15
16	20.3																		16
17	20.3																		17
18	20.3			19.4															18
19	20.3			19.4															19
20	20.3			19.4															20
22	20.3			19.4			18.1												22
24	20.2			19.4			18.1												24
26	20.1			19.4			18.1			17.4									26
28	19.9			19.4			18.1			17.3			16.2						28
30	19.8			19.3			18.1			17.3			16.2						30
32	19.6			19.1			18.1			17.3			16.2			15.5			32
34	19.4			19			18			17.3			16.2		15.5				34
36	19.2			18.8			17.9			17.2			16.1		15.4				36
38	19			18.6			17.8			17.2			16.1		15.4				38
40	18.8			18.4			17.7			17.1			16		15.3				40
45	18.1	15.8		17.9			17.3			16.9			15.9		15.2				45
50	17.5	15.2		17.4			16.9			16.5			15.8		15.2				50
55	16.9	14.5		16.9	14.5		16.4	14.3		16.2			15.6		15				55
60	16.3	13.9		16.3	14		16	13.8		15.8	13.8		15.3		14.9				60
65	15.6	13.3	11.1	15.8	13.5		15.6	13.4		15.4	13.3		15	13.1		14.6	12.9		65
70	15	12.8	10.7	15.3	13		15.2	12.9		15	12.9		14.6	12.7		14.3	12.6		70
75	14.3	12.3	10.5	14.7	12.5	10.5	14.7	12.5	10.5	14.7	12.6		14.3	12.4		14	12.3		75
80	13.6	11.9	10.3	14.2	12.1	10.3	14.2	12.2	10.3	14.3	12.2	10.2	14	12.1	10.2	13.7	12.1		80
85	12.9	11.5	10.1	13.6	11.7	10.1	13.8	11.8	10.1	13.9	11.9	10.1	13.6	11.8	10	13.4	11.8	10	85
90	12.2	11.1	9.9	13	11.4	9.9	13.2	11.5	9.9	13.4	11.6	9.9	13.2	11.5	9.9	13.1	11.5	9.9	90
95	11.4	10.7	9.8	12.3	11	9.8	12.6	11.2	9.8	13	11.3	9.8	12.8	11.3	9.8	12.8	11.3	9.8	95
100	10.7	10.2	9.7	11.6	10.7	9.7	12	10.9	9.7	12.4	11	9.7	12.4	11	9.7	12.4	11	9.6	100
105	10.1	9.7	9.6	11	10.3	9.6	11.4	10.5	9.6	11.9	10.7	9.6	11.9	10.8	9.6	12	10.8	9.6	105
110	9.5	9.3	9.3	10.4	9.9	9.5	10.9	10.1	9.5	11.4	10.4	9.6	11.4	10.4	9.5	11.6	10.5	9.5	110
115	9	8.9	9	9.9	9.4	9.3	10.3	9.7	9.4	10.9	10	9.5	10.9	10.1	9.4	11.2	10.2	9.4	115
120	8.6	8.5	8.8	9.4	9.1	9.1	9.8	9.4	9.2	10.4	9.7	9.4	10.4	9.8	9.3	10.8	9.9	9.4	120
125	8.2	8.2		9	8.7	8.9	9.4	9.1	9	10	9.4	9.2	9.9	9.5	9.2	10.3	9.6	9.2	125
130	7.8	8.1		8.6	8.5	8.7	9	8.8	8.7	9.6	9.1	9	9.4	9.2	9	9.9	9.3	9.1	130
135				8.3	8.2		8.7	8.5	8.5	9.3	8.8	8.8	9	8.9	8.9	9.6	9.1	8.9	135
140				8	8		8.3	8.2	8.3	9	8.6	8.7	8.7	8.6	8.7	9.2	8.9	8.7	140
145				7.7			8.1	7.9		8.7	8.4	8.5	8.3	8.3	8.5	8.8	8.6	8.6	145
150							7.8	7.7		8.4	8.2	8.3	8	8	8.1	8.5	8.4	8.5	150
155							7.5	7.6		8.1	8		7.7	7.7	7.9	8.2	8.2	8.3	155
160										7.9	7.8		7.4	7.4	7.6	7.9	7.9	8	160
165										7.7	7.6		7.1	7.1		7.7	7.6	7.8	165
170										7.5	7.6		6.9	6.9		7.4	7.4	7.6	170
175													6.6	6.7		7.1	7.2	7.4	175
180													6.4	6.5		6.9	7		180
185													6.2			6.7	6.7		185
190																6.5	6.6		190
195																6.4	6.5		195
200																6.3			200

t_242_03400_00_000

STERLING CRANE

Lifting capacities Forces de levage

TVNZK



ft	128 ft + 23 ft			142 ft + 23 ft			156 ft + 23 ft			171 ft + 23 ft			185 ft + 23 ft			197 ft + 23 ft			ft
	72 ft			72 ft			72 ft			72 ft			72 ft			72 ft			
	0°	22.5°	45°	0°	22.5°	45°	0°	22.5°	45°	0°	22.5°	45°	0°	22.5°	45°	0°	22.5°	45°	
38	14.4																		38
40	14.4																		40
45	14.3			13.6			12.8												45
50	14.2			13.6			12.7												50
55	14.1			13.5			12.7			11.9			10.9						55
60	14.1			13.5			12.6			11.8			10.8			9.7			60
65	13.9			13.4			12.6			11.7			10.8			9.7			65
70	13.7			13.2			12.5			11.6			10.8			9.6			70
75	13.5	12.1		13.1	11.9		12.4			11.6			10.7			9.6			75
80	13.2	11.8		12.9	11.7		12.2	11.4		11.5			10.7			9.6			80
85	12.9	11.6		12.6	11.4		12.1	11.2		11.4	10.8		10.6			9.5			85
90	12.7	11.4		12.4	11.2		11.9	11		11.3	10.7		10.6			9.5			90
95	12.4	11.1	9.6	12.1	11	9.6	11.7	10.8		11.1	10.5		10.5	10		9.4	9		95
100	12.1	10.9	9.6	11.9	10.8	9.5	11.5	10.6	9.4	11	10.3		10.4	9.9		9.3	9		100
105	11.8	10.7	9.5	11.6	10.6	9.5	11.3	10.4	9.4	10.8	10.1	9.3	10.2	9.7		9.3	9		105
110	11.5	10.4	9.4	11.4	10.3	9.4	11	10.1	9.3	10.6	9.9	9.2	10.1	9.5		9.2	9		110
115	11.1	10.1	9.4	11.1	10.1	9.3	10.8	9.9	9.3	10.5	9.7	9.1	9.9	9.4	9	9.2	8.9	8.5	115
120	10.8	9.8	9.3	10.8	9.8	9.2	10.5	9.7	9.2	10.2	9.5	9	9.8	9.2	8.8	9.1	8.7	8.4	120
125	10.4	9.6	9.2	10.4	9.6	9.1	10.3	9.4	9	10	9.3	8.9	9.6	9	8.7	9	8.6	8.3	125
130	10	9.3	9	10.1	9.3	9	10	9.2	8.9	9.8	9.1	8.8	9.5	8.9	8.6	8.9	8.4	8.3	130
135	9.7	9.1	8.9	9.8	9.1	8.8	9.8	9	8.8	9.6	8.9	8.6	9.3	8.7	8.5	8.7	8.3	8.2	135
140	9.3	8.9	8.7	9.5	8.9	8.7	9.5	8.9	8.6	9.4	8.8	8.5	9.1	8.6	8.4	8.5	8.2	8.1	140
145	9	8.7	8.6	9.2	8.7	8.6	9.3	8.7	8.5	9.2	8.6	8.4	9	8.5	8.3	8.3	8.1	8	145
150	8.6	8.5	8.5	9	8.6	8.4	9	8.5	8.4	9	8.5	8.3	8.8	8.3	8.1	8.1	8	7.9	150
155	8.3	8.3	8.3	8.6	8.4	8.3	8.8	8.4	8.3	8.9	8.3	8.2	8.7	8.2	8.1	7.9	7.8	7.8	155
160	7.9	8	8.2	8.3	8.2	8.2	8.5	8.2	8.2	8.6	8.2	8.1	8.5	8	8	7.6	7.6	7.7	160
165	7.6	7.8	8	8	8.1	8.1	8.2	8.1	8.1	8.4	8	8	8.4	7.9	7.9	7.4	7.4	7.5	165
170	7.3	7.5	7.7	7.7	7.8	8	7.9	7.9	8	8.1	7.9	7.9	8.2	7.8	7.8	7.1	7.2	7.4	170
175	7	7.2	7.4	7.5	7.6	7.8	7.6	7.8	7.9	7.9	7.7	7.8	7.9	7.7	7.7	6.9	7	7.2	175
180	6.8	6.9	7.1	7.2	7.3	7.5	7.3	7.5	7.7	7.6	7.6	7.7	7.7	7.6	7.7	6.6	6.8	7	180
185	6.5	6.7		7	7.1	7.3	7.1	7.3	7.5	7.4	7.5	7.6	7.5	7.4	7.6	6.4	6.7	6.8	185
190	6.3	6.4		6.7	6.9	7	6.8	7	7.3	7.1	7.3	7.5	7.3	7.3	7.4	6.2	6.5	6.6	190
195	6.1	6.2		6.5	6.6	6.8	6.5	6.8	7	6.9	7.1	7.2	7	7.1	7.3	5.9	6.2	6.4	195
200	5.8	5.9		6.3	6.4		6.3	6.5	6.7	6.6	6.9	7	6.8	6.9	7.1	5.7	6	6.2	200
205	5.6	5.7		6.1	6.2		6	6.2	6.4	6.4	6.6	6.8	6.6	6.7	7	5.5	5.8	6	205
210	5.5	5.6		5.9	6		5.8	6	6.1	6.2	6.4	6.6	6.4	6.5	6.8	5.2	5.5	5.8	210
215	4.6			5.7	5.8		5.6	5.7	5.9	5.9	6.1	6.3	6.1	6.3	6.6	5	5.3	5.5	215
220				5.6	5.7		5.3	5.5		5.7	5.9	6.1	5.6	6.1	6.4	4.8	5.1	5.3	220
225				5.4			5.1	5.3		5.5	5.7	5.8	5.2	5.9	6.1	4.6	4.9	5.1	225
230							4.9	5.1		5.4	5.5	5.6	4.8	5.5	5.7	4.4	4.7	4.8	230
235							4.7			5.2	5.3		4.3	5	5.2	4	4.5	4.6	235
240							3.6			5	5.1		3.9	4.6	4.7	3.5	4.3	4.4	240
245										4.7	4.9		3.5	4.1		3.1	3.9	4.1	245
250										3.6			3.1	3.6		2.7	3.4	3.5	250
255													2.7	3.1		2.3	2.9		255
260													2.3	2.7		2	2.5		260
265																1.6	2.1		265
270																	1.7		270

t_242_03400_00_000

STERLING CRANE

Lifting capacities Forces de levage

TVNZK

ft	44 ft + 23 ft			58 ft + 23 ft			72 ft + 23 ft			86 ft + 23 ft			100 ft + 23 ft			114 ft + 23 ft			ft
	72 ft			72 ft			72 ft			72 ft			72 ft			72 ft			
	0°	22.5°	45°	0°	22.5°	45°	0°	22.5°	45°	0°	22.5°	45°	0°	22.5°	45°	0°	22.5°	45°	
15	20.3																		15
16	20.3																		16
17	20.3																		17
18	20.3			19.4															18
19	20.3			19.4															19
20	20.3			19.4															20
22	20.3			19.4			18.1												22
24	20.2			19.4			18.1												24
26	20.1			19.4			18.1			17.4									26
28	19.9			19.4			18.1			17.3			16.2						28
30	19.8			19.3			18.1			17.3			16.2						30
32	19.6			19.1			18.1			17.3			16.2			15.5			32
34	19.4			19			18			17.3			16.2		15.5				34
36	19.2			18.8			17.9			17.2			16.1		15.4				36
38	19			18.6			17.8			17.2			16.1		15.4				38
40	18.8			18.4			17.7			17.1			16		15.3				40
45	18.1	15.8		17.9			17.3			16.9			15.9		15.2				45
50	17.5	15.2		17.4			16.9			16.5			15.8		15.2				50
55	16.9	14.5		16.9	14.5		16.4	14.3		16.2			15.6		15				55
60	16.3	13.9		16.3	14		16	13.8		15.8	13.8		15.3		14.9				60
65	15.6	13.3	11.1	15.8	13.5		15.6	13.4		15.4	13.3		15	13.1		14.6	12.9		65
70	15	12.8	10.7	15.3	13		15.2	12.9		15	12.9		14.6	12.7		14.3	12.6		70
75	14.3	12.3	10.5	14.7	12.5	10.5	14.7	12.5	10.5	14.7	12.6		14.3	12.4		14	12.3		75
80	13.6	11.9	10.3	14.2	12.1	10.3	14.2	12.2	10.3	14.3	12.2	10.2	14	12.1	10.2	13.7	12.1		80
85	12.9	11.5	10.1	13.6	11.7	10.1	13.8	11.8	10.1	13.9	11.9	10.1	13.6	11.8	10	13.4	11.8	10	85
90	12.2	11.1	9.9	13	11.4	9.9	13.2	11.5	9.9	13.4	11.6	9.9	13.2	11.5	9.9	13.1	11.5	9.9	90
95	11.4	10.7	9.8	12.3	11	9.8	12.6	11.2	9.8	13	11.3	9.8	12.8	11.3	9.8	12.8	11.3	9.8	95
100	10.7	10.2	9.7	11.6	10.7	9.7	12	10.9	9.7	12.4	11	9.7	12.4	11	9.7	12.4	11	9.6	100
105	10.1	9.7	9.6	11	10.3	9.6	11.4	10.5	9.6	11.9	10.7	9.6	11.9	10.8	9.6	12	10.8	9.6	105
110	9.5	9.3	9.3	10.4	9.9	9.5	10.9	10.1	9.5	11.4	10.4	9.6	11.4	10.4	9.5	11.6	10.5	9.5	110
115	9	8.9	9	9.9	9.4	9.3	10.3	9.7	9.4	10.9	10	9.5	10.9	10.1	9.4	11.2	10.2	9.4	115
120	8.6	8.5	8.8	9.4	9.1	9.1	9.8	9.4	9.2	10.4	9.7	9.4	10.4	9.8	9.3	10.8	9.9	9.4	120
125	8.2	8.2		9	8.7	8.9	9.4	9.1	9	10	9.4	9.2	9.9	9.5	9.2	10.3	9.6	9.2	125
130	7.8	8.1		8.6	8.5	8.7	9	8.8	8.7	9.6	9.1	9	9.4	9.2	9	9.9	9.3	9.1	130
135				8.3	8.2		8.7	8.5	8.5	9.3	8.8	8.8	9	8.9	8.9	9.6	9.1	8.9	135
140				8	8		8.3	8.2	8.3	9	8.6	8.7	8.7	8.6	8.7	9.2	8.9	8.7	140
145				7.7			8.1	7.9		8.7	8.4	8.5	8.3	8.3	8.5	8.8	8.6	8.6	145
150							7.8	7.7		8.4	8.2	8.3	8	8	8.1	8.5	8.4	8.5	150
155							7.5	7.6		8.1	8		7.7	7.7	7.9	8.2	8.2	8.3	155
160										7.9	7.8		7.4	7.4	7.6	7.9	7.9	8	160
165										7.7	7.6		7.1	7.1		7.7	7.6	7.8	165
170										7.5	7.6		6.9	6.9		7.4	7.4	7.6	170
175													6.6	6.7		7.1	7.2	7.4	175
180													6.4	6.5		6.9	7		180
185													6.2			6.7	6.7		185
190																6.5	6.6		190
195																6.4	6.5		195
200																6.3			200

t_242_03410_00_000

STERLING CRANE

Lifting capacities Forces de levage

TVNZK


ft	128 ft + 23 ft			142 ft + 23 ft			156 ft + 23 ft			171 ft + 23 ft			185 ft + 23 ft			197 ft + 23 ft			ft
	72 ft			72 ft			72 ft			72 ft			72 ft			72 ft			
	0°	22.5°	45°	0°	22.5°	45°	0°	22.5°	45°	0°	22.5°	45°	0°	22.5°	45°	0°	22.5°	45°	
38	14.4																		38
40	14.4																		40
45	14.3			13.6			12.8												45
50	14.2			13.6			12.7												50
55	14.1			13.5			12.7			11.9			10.9						55
60	14.1			13.5			12.6			11.8			10.8			9.7			60
65	13.9			13.4			12.6			11.7			10.8			9.7			65
70	13.7			13.2			12.5			11.6			10.8			9.6			70
75	13.5	12.1		13.1	11.9		12.4			11.6			10.7			9.6			75
80	13.2	11.8		12.9	11.7		12.2	11.4		11.5			10.7			9.6			80
85	12.9	11.6		12.6	11.4		12.1	11.2		11.4	10.8		10.6			9.5			85
90	12.7	11.4		12.4	11.2		11.9	11		11.3	10.7		10.6			9.5			90
95	12.4	11.1	9.6	12.1	11	9.6	11.7	10.8		11.1	10.5		10.5	10		9.4	9		95
100	12.1	10.9	9.6	11.9	10.8	9.5	11.5	10.6	9.4	11	10.3		10.4	9.9		9.3	9		100
105	11.8	10.7	9.5	11.6	10.6	9.5	11.3	10.4	9.4	10.8	10.1	9.3	10.2	9.7		9.3	9		105
110	11.5	10.4	9.4	11.4	10.3	9.4	11	10.1	9.3	10.6	9.9	9.2	10.1	9.5		9.2	9		110
115	11.1	10.1	9.4	11.1	10.1	9.3	10.8	9.9	9.3	10.5	9.7	9.1	9.9	9.4	9	9.2	8.9	8.5	115
120	10.8	9.8	9.3	10.8	9.8	9.2	10.5	9.7	9.2	10.2	9.5	9	9.8	9.2	8.8	9.1	8.7	8.4	120
125	10.4	9.6	9.2	10.4	9.6	9.1	10.3	9.4	9	10	9.3	8.9	9.6	9	8.7	9	8.6	8.3	125
130	10	9.3	9	10.1	9.3	9	10	9.2	8.9	9.8	9.1	8.8	9.5	8.9	8.6	8.9	8.4	8.3	130
135	9.7	9.1	8.9	9.8	9.1	8.8	9.8	9	8.8	9.6	8.9	8.6	9.3	8.7	8.5	8.7	8.3	8.2	135
140	9.3	8.9	8.7	9.5	8.9	8.7	9.5	8.9	8.6	9.4	8.8	8.5	9.1	8.6	8.4	8.5	8.2	8.1	140
145	9	8.7	8.6	9.2	8.7	8.6	9.3	8.7	8.5	9.2	8.6	8.4	9	8.5	8.3	8.3	8.1	8	145
150	8.6	8.5	8.5	9	8.6	8.4	9	8.5	8.4	9	8.5	8.3	8.8	8.3	8.1	8.1	8	7.9	150
155	8.3	8.3	8.3	8.6	8.4	8.3	8.8	8.4	8.3	8.9	8.3	8.2	8.7	8.2	8.1	7.9	7.8	7.8	155
160	7.9	8	8.2	8.3	8.2	8.2	8.5	8.2	8.2	8.6	8.2	8.1	8.5	8	8	7.6	7.6	7.7	160
165	7.6	7.8	8	8	8.1	8.1	8.2	8.1	8.1	8.4	8	8	8.4	7.9	7.9	7.4	7.4	7.5	165
170	7.3	7.5	7.7	7.7	7.8	8	7.9	7.9	8	8.1	7.9	7.9	8.2	7.8	7.8	7.1	7.2	7.4	170
175	7	7.2	7.4	7.5	7.6	7.8	7.6	7.8	7.9	7.9	7.7	7.8	7.7	7.7	7.7	6.8	7	7.2	175
180	6.8	6.9	7.1	7.2	7.3	7.5	7.3	7.5	7.7	7.6	7.6	7.7	7	7.6	7.7	6.5	6.8	7	180
185	6.5	6.7		7	7.1	7.3	7.1	7.3	7.5	7.3	7.5	7.6	6.3	7.4	7.6	5.9	6.7	6.8	185
190	6.3	6.4		6.7	6.9	7	6.8	7	7.3	6.9	7.3	7.5	5.7	7.1	7.4	5.3	6.5	6.6	190
195	6.1	6.2		6.5	6.6	6.8	6.5	6.8	7	6.3	7.1	7.2	5.1	6.5	7.1	4.8	6	6.4	195
200	5.8	5.9		6.3	6.4		6.3	6.5	6.7	5.7	6.8	7	4.5	5.8	6.6	4.2	5.6	6.2	200
205	5.6	5.7		6.1	6.2		6	6.2	6.4	5.2	6.2	6.7	4	5.2	5.9	3.7	5	5.7	205
210	5.5	5.6		5.9	6		5.7	6	6.1	4.7	5.6	6.1	3.5	4.6	5.2	3.2	4.4	5.1	210
215	4.6			5.7	5.8		5.2	5.7	5.9	4.2	5.1	5.4	3	4.1	4.6	2.7	3.9	4.5	215
220				5.6	5.7		4.7	5.3		3.8	4.6	4.8	2.6	3.5	4	2.3	3.3	3.9	220
225				5.4			4.3	4.8		3.3	4	4.2	2.1	3	3.4	1.8	2.8	3.3	225
230							3.9	4.3		2.9	3.6	3.6	1.7	2.6	2.8		2.3	2.8	230
235							3.5			2.5	3.1			2.1	2.3		1.9	2.2	235
240							3.2			2.2	2.6			1.6	1.8			1.7	240
245										1.8	2.2								245
250										1.5									250

t_242_03410_00_000

STERLING CRANE

Lifting capacities Forces de levage

TVNZK



ft	44 ft + 23 ft			58 ft + 23 ft			72 ft + 23 ft			86 ft + 23 ft			100 ft + 23 ft			114 ft + 23 ft			ft
	63 ft			63 ft			63 ft			63 ft			63 ft			63 ft			
	0°	22.5°	45°	0°	22.5°	45°	0°	22.5°	45°	0°	22.5°	45°	0°	22.5°	45°	0°	22.5°	45°	
15	35																		15
16	35																		16
17	34.9																		17
18	34.9																		18
19	34.9			31.9															19
20	34.8			31.9															20
22	34.7			31.9			28.4												22
24	34.5			31.8			28.3												24
26	34.2			31.8			28.3			26.3									26
28	33.5			31.6			28.3			26.3									28
30	32.6			31.3			28.3			26.3									30
32	31.6			30.9			28.2			26.3			23.8			21.1			32
34	30.6			30.1			27.9			26.2			23.7			21.1			34
36	29.6			29.3			27.5			26.2			23.7			21			36
38	28.6	23.4		28.5			27.1			25.9			23.6			21			38
40	27.6	22.8		27.7			26.5			25.5			23.5			20.9			40
45	25.4	21.4		25.8	22.2		25			24.4			22.9			20.7			45
50	23.4	20.1		24	20.8		23.5			23.2			22.1			20.5			50
55	21.6	18.9		22.4	19.6		22.1	19.1		22.1	18.9		21.2			20.1			55
60	19.9	17.7	15.4	20.8	18.4	15.4	20.8	18.1		20.9	18		20.3	17.4		19.6	17.1		60
65	18.4	16.4	14.9	19.4	17.4	14.9	19.6	17.2	14.8	19.8	17.2		19.4	16.7		18.9	16.4		65
70	16.9	15.3	14.4	18.1	16.4	14.5	18.5	16.4	14.4	18.8	16.4		18.5	16		18.2	15.8		70
75	15.7	14.3	13.9	16.9	15.5	14.1	17.3	15.6	14	17.8	15.7	14	17.6	15.4	13.9	17.5	15.3		75
80	14.5	13.4	13.2	15.7	14.7	13.5	16.2	14.8	13.5	16.8	15	13.6	16.7	14.8	13.4	16.9	14.7	13.3	80
85	13.5	12.6	12.5	14.7	13.9	12.9	15.3	14.1	13	15.9	14.4	13.1	15.9	14.3	12.9	16.2	14.2	12.8	85
90	12.6	11.8	11.8	13.8	13.1	12.3	14.3	13.4	12.4	15.1	13.7	12.6	15	13.7	12.5	15.6	13.7	12.4	90
95	11.7	11.1	11.3	12.9	12.4	11.8	13.4	12.7	12	14.3	13.2	12.1	14.1	13.1	12.1	14.9	13.2	12.1	95
100	10.9	10.5	10.8	12.2	11.8	11.3	12.7	12.1	11.5	13.6	12.6	11.7	13.3	12.6	11.7	14.1	12.7	11.7	100
105	10.3	9.9	10.3	11.5	11.2	10.9	11.9	11.5	11	12.9	12.1	11.3	12.6	12.2	11.3	13.4	12.3	11.4	105
110	9.6	9.5	10	10.8	10.7	10.5	11.3	10.9	10.6	12.3	11.5	11	11.9	11.7	11	12.7	11.9	11.1	110
115	9.2	9.1	5.2	10.2	10.2	10.1	10.7	10.4	10.2	11.7	11.1	10.6	11.2	11.2	10.7	12.1	11.5	10.8	115
120	8.7	8.8		9.7	9.8	9.9	10.1	9.9	9.8	11.1	10.6	10.3	10.6	10.6	10.4	11.5	11.1	10.5	120
125				9.2	9.4		9.7	9.5	9.5	10.6	10.2	10	10	10.1	10.1	10.9	10.6	10.3	125
130				8.9	9.1		9.2	9.2	9.3	10.1	9.8	9.7	9.6	9.7	9.7	10.4	10.2	10	130
135				8.5			8.9	8.9		9.7	9.5	9.5	9.2	9.3	9.4	9.9	9.8	9.7	135
140							8.5	8.6		9.3	9.2	9.3	8.8	8.9	9	9.5	9.4	9.4	140
145							8.2	8.3		9	8.9		8.4	8.5	8.6	9.2	9	9.1	145
150							8			8.7	8.7		8.1	8.2	8.3	8.8	8.7	8.8	150
155										8.5	8.5		7.8	7.9	8	8.5	8.4	8.5	155
160										8.3	8.4		7.5	7.6		8.2	8.2	8.3	160
165													7.2	7.3		7.9	7.9	8	165
170													7	7.1		7.6	7.6		170
175													6.8	6.9		7.4	7.4		175
180																7.2	7.2		180
185																7	7		185
190																6.8			190

t_242_02400_00_000

STERLING CRANE

Lifting capacities Forces de levage

TVNZK




ft	128 ft + 23 ft			142 ft + 23 ft			156 ft + 23 ft			171 ft + 23 ft			185 ft + 23 ft			197 ft + 23 ft			ft
	63 ft			63 ft			63 ft			63 ft			63 ft			63 ft			
	0°	22.5°	45°	0°	22.5°	45°	0°	22.5°	45°	0°	22.5°	45°	0°	22.5°	45°	0°	22.5°	45°	
38	19.1																		38
40	19.1																		40
45	18.9			17.8			16.4												45
50	18.8			17.6			16.3												50
55	18.6			17.5			16.2			14.9			13.5						55
60	18.4			17.4			16			14.8			13.4			11.7			60
65	17.9	15.8		17.2			15.9			14.7			13.3			11.7			65
70	17.4	15.3		16.9			15.8			14.6			13.2			11.5			70
75	16.9	14.8		16.4	14.6		15.5	14		14.5			13.2			11.4			75
80	16.3	14.4		16	14.1		15.2	13.7		14.3	13.2		13.1			11.3			80
85	15.8	13.9	12.6	15.5	13.7	12.4	14.9	13.3		14.1	12.9		13	12.1		11.1	10.4		85
90	15.2	13.5	12.2	15	13.3	12.1	14.5	12.9		13.9	12.6		12.8	11.9		11	10.4		90
95	14.6	13	11.9	14.6	12.9	11.8	14.1	12.6	11.6	13.5	12.2		12.6	11.7		11	10.4		95
100	14.1	12.6	11.6	14.1	12.5	11.5	13.7	12.2	11.3	13.2	11.9	11.1	12.5	11.5	10.7	10.9	10.4		100
105	13.5	12.2	11.3	13.6	12.1	11.2	13.3	11.9	11	12.9	11.6	10.8	12.2	11.2	10.5	10.8	10.3	9.5	105
110	12.9	11.8	11	13.1	11.8	11	12.9	11.6	10.8	12.5	11.3	10.6	11.9	10.9	10.3	10.6	10.1	9.4	110
115	12.3	11.4	10.7	12.6	11.4	10.7	12.4	11.3	10.5	12.2	11.1	10.4	11.7	10.7	10.1	10.4	9.9	9.3	115
120	11.7	11.1	10.5	12	11.1	10.5	12	11	10.3	11.9	10.8	10.2	11.4	10.5	9.9	10.1	9.8	9.2	120
125	11.1	10.7	10.2	11.5	10.8	10.2	11.5	10.7	10.1	11.5	10.5	10	11.1	10.2	9.8	9.8	9.6	9.1	125
130	10.6	10.3	10	11	10.4	10	11.1	10.4	9.9	11.2	10.2	9.8	10.9	10	9.6	9.6	9.4	9	130
135	10	10	9.8	10.5	10.1	9.8	10.6	10.1	9.8	10.8	10	9.6	10.6	9.8	9.5	9.3	9.1	8.9	135
140	9.6	9.6	9.6	10.1	9.8	9.7	10.2	9.8	9.6	10.4	9.8	9.5	10.3	9.6	9.3	9	8.9	8.8	140
145	9.2	9.3	9.3	9.6	9.5	9.5	9.8	9.6	9.4	10	9.6	9.4	9.9	9.4	9.2	8.7	8.7	8.6	145
150	8.8	8.9	9	9.2	9.2	9.2	9.5	9.3	9.3	9.6	9.3	9.2	9.6	9.2	9.1	8.4	8.4	8.4	150
155	8.4	8.5	8.7	8.9	8.9	9	9.1	9	9.1	9.3	9.1	9.1	9.3	9.1	9	8.2	8.2	8.3	155
160	8.1	8.2	8.4	8.6	8.6	8.7	8.8	8.8	8.9	9	8.9	8.9	9	8.8	8.9	7.9	7.9	8	160
165	7.7	7.9	8.1	8.2	8.3	8.5	8.4	8.5	8.6	8.7	8.7	8.7	8.7	8.7	8.7	7.6	7.7	7.8	165
170	7.5	7.6	7.7	7.9	8	8.2	8.1	8.2	8.4	8.4	8.4	8.5	8.5	8.5	8.5	7.3	7.5	7.6	170
175	7.1	7.3	7.4	7.7	7.7	7.9	7.7	8	8.1	8.1	8.2	8.3	8.2	8.2	8.4	7	7.3	7.4	175
180	6.9	7		7.4	7.5	7.6	7.4	7.7	7.9	7.8	7.9	8.1	8	8	8.2	6.8	7	7.2	180
185	6.6	6.7		7.1	7.2	7.4	7.1	7.4	7.6	7.5	7.7	7.9	7.7	7.8	7.9	6.5	6.8	7	185
190	6.4	6.5		6.9	7	7.1	6.8	7.1	7.3	7.3	7.4	7.6	7.4	7.6	7.7	6.3	6.5	6.7	190
195	6.1	6.2		6.6	6.7		6.6	6.8	6.9	7	7.2	7.4	7.2	7.3	7.5	6	6.3	6.5	195
200	6	6.1		6.4	6.5		6.3	6.5	6.6	6.8	6.9	7.1	6.9	7.1	7.3	5.8	6	6.2	200
205	5.8			6.2	6.3		6.1	6.2	6.4	6.5	6.7	6.8	6.7	6.9	7.1	5.5	5.8	6	205
210				6.1	6.1		5.8	6	6.1	6.3	6.4	6.5	6.3	6.7	6.8	5.3	5.6	5.7	210
215				5.9	6		5.6	5.7		6	6.2	6.3	5.8	6.4	6.6	5.1	5.3	5.5	215
220				3.5			5.3	5.5		5.8	5.9	6.1	5.3	6	6.2	4.9	5.1	5.3	220
225							5.1	5.2		5.6	5.8		4.9	5.5	5.7	4.6	4.9	5	225
230							4.6			5.4	5.5		4.4	5	5.1	4.1	4.7	4.8	230
235										5.1	5.4		4	4.5	4.6	3.6	4.3	4.5	235
240										4.4	5		3.5	4		3.2	3.8	4	240
245										2.1			3.1	3.5		2.8	3.3	3.4	245
250													2.7	3		2.4	2.9		250
255													1.7			2	2.4		255
260																1.6			260

t_242_02400_00_000

STERLING CRANE

Lifting capacities Forces de levage

TVNZK



ft	44 ft + 23 ft			58 ft + 23 ft			72 ft + 23 ft			86 ft + 23 ft			100 ft + 23 ft			114 ft + 23 ft			ft
	63 ft			63 ft			63 ft			63 ft			63 ft			63 ft			
	0°	22.5°	45°	0°	22.5°	45°	0°	22.5°	45°	0°	22.5°	45°	0°	22.5°	45°	0°	22.5°	45°	
15	35																		15
16	35																		16
17	34.9																		17
18	34.9																		18
19	34.9			31.9															19
20	34.8			31.9															20
22	34.7			31.9			28.4												22
24	34.5			31.8			28.3												24
26	34.2			31.8			28.3			26.3									26
28	33.5			31.6			28.3			26.3									28
30	32.6			31.3			28.3			26.3									30
32	31.6			30.9			28.2			26.3			23.8			21.1			32
34	30.6			30.1			27.9			26.2			23.7			21.1			34
36	29.6			29.3			27.5			26.2			23.7			21			36
38	28.6	23.4		28.5			27.1			25.9			23.6			21			38
40	27.6	22.8		27.7			26.5			25.5			23.5			20.9			40
45	25.4	21.4		25.8	22.2		25			24.4			22.9			20.7			45
50	23.4	20.1		24	20.8		23.5			23.2			22.1			20.5			50
55	21.6	18.9		22.4	19.6		22.1	19.1		22.1	18.9		21.2			20.1			55
60	19.9	17.7	15.4	20.8	18.4	15.4	20.8	18.1		20.9	18		20.3	17.4		19.6	17.1		60
65	18.4	16.4	14.9	19.4	17.4	14.9	19.6	17.2	14.8	19.8	17.2		19.4	16.7		18.9	16.4		65
70	16.9	15.3	14.4	18.1	16.4	14.5	18.5	16.4	14.4	18.8	16.4		18.5	16		18.2	15.8		70
75	15.7	14.3	13.9	16.9	15.5	14.1	17.3	15.6	14	17.8	15.7	14	17.6	15.4	13.9	17.5	15.3		75
80	14.5	13.4	13.2	15.7	14.7	13.5	16.2	14.8	13.5	16.8	15	13.6	16.7	14.8	13.4	16.9	14.7	13.3	80
85	13.5	12.6	12.5	14.7	13.9	12.9	15.3	14.1	13	15.9	14.4	13.1	15.9	14.3	12.9	16.2	14.2	12.8	85
90	12.6	11.8	11.8	13.8	13.1	12.3	14.3	13.4	12.4	15.1	13.7	12.6	15	13.7	12.5	15.6	13.7	12.4	90
95	11.7	11.1	11.3	12.9	12.4	11.8	13.4	12.7	12	14.3	13.2	12.1	14.1	13.1	12.1	14.9	13.2	12.1	95
100	10.9	10.5	10.8	12.2	11.8	11.3	12.7	12.1	11.5	13.6	12.6	11.7	13.3	12.6	11.7	14.1	12.7	11.7	100
105	10.3	9.9	10.3	11.5	11.2	10.9	11.9	11.5	11	12.9	12.1	11.3	12.6	12.2	11.3	13.4	12.3	11.4	105
110	9.6	9.5	10	10.8	10.7	10.5	11.3	10.9	10.6	12.3	11.5	11	11.9	11.7	11	12.7	11.9	11.1	110
115	9.2	9.1	5.2	10.2	10.2	10.1	10.7	10.4	10.2	11.7	11.1	10.6	11.2	11.2	10.7	12.1	11.5	10.8	115
120	8.7	8.8		9.7	9.8	9.9	10.1	9.9	9.8	11.1	10.6	10.3	10.6	10.6	10.4	11.5	11.1	10.5	120
125				9.2	9.4		9.7	9.5	9.5	10.6	10.2	10	10	10.1	10.1	10.9	10.6	10.3	125
130				8.9	9.1		9.2	9.2	9.3	10.1	9.8	9.7	9.6	9.7	9.7	10.4	10.2	10	130
135				8.5			8.9	8.9		9.7	9.5	9.5	9.2	9.3	9.4	9.9	9.8	9.7	135
140							8.5	8.6		9.3	9.2	9.3	8.8	8.9	9	9.5	9.4	9.4	140
145							8.2	8.3		9	8.9		8.4	8.5	8.6	9.2	9	9.1	145
150							8			8.7	8.7		8.1	8.2	8.3	8.8	8.7	8.8	150
155										8.5	8.5		7.8	7.9	8	8.5	8.4	8.5	155
160										8.3	8.4		7.5	7.6		8.2	8.2	8.3	160
165													7.2	7.3		7.9	7.9	8	165
170													7	7.1		7.6	7.6		170
175													6.8	6.9		7.4	7.4		175
180																7.2	7.2		180
185																7	7		185
190																6.8			190

t_242_02410_00_000

STERLING CRANE

Lifting capacities Forces de levage

TVNZK



ft	128 ft + 23 ft			142 ft + 23 ft			156 ft + 23 ft			171 ft + 23 ft			185 ft + 23 ft			197 ft + 23 ft			ft	
	63 ft			63 ft			63 ft			63 ft			63 ft			63 ft				
	0°	22.5°	45°	0°	22.5°	45°	0°	22.5°	45°	0°	22.5°	45°	0°	22.5°	45°	0°	22.5°	45°		
38	19.1																		38	
40	19.1																		40	
45	18.9			17.8			16.4												45	
50	18.8			17.6			16.3												50	
55	18.6			17.5			16.2			14.9			13.5						55	
60	18.4			17.4			16			14.8			13.4				11.7		60	
65	17.9	15.8		17.2			15.9			14.7			13.3				11.7		65	
70	17.4	15.3		16.9			15.8			14.6			13.2				11.5		70	
75	16.9	14.8		16.4	14.6		15.5	14		14.5			13.2				11.4		75	
80	16.3	14.4		16	14.1		15.2	13.7		14.3	13.2		13.1				11.3		80	
85	15.8	13.9	12.6	15.5	13.7	12.4	14.9	13.3		14.1	12.9		13	12.1			11.1	10.4	85	
90	15.2	13.5	12.2	15	13.3	12.1	14.5	12.9		13.9	12.6		12.8	11.9			11	10.4	90	
95	14.6	13	11.9	14.6	12.9	11.8	14.1	12.6	11.6	13.5	12.2		12.6	11.7			11	10.4	95	
100	14.1	12.6	11.6	14.1	12.5	11.5	13.7	12.2	11.3	13.2	11.9	11.1	12.5	11.5	10.7		10.9	10.4	100	
105	13.5	12.2	11.3	13.6	12.1	11.2	13.3	11.9	11	12.9	11.6	10.8	12.2	11.2	10.5		10.8	10.3	9.5	105
110	12.9	11.8	11	13.1	11.8	11	12.9	11.6	10.8	12.5	11.3	10.6	11.9	10.9	10.3		10.6	10.1	9.4	110
115	12.3	11.4	10.7	12.6	11.4	10.7	12.4	11.3	10.5	12.2	11.1	10.4	11.7	10.7	10.1		10.4	9.9	9.3	115
120	11.7	11.1	10.5	12	11.1	10.5	12	11	10.3	11.9	10.8	10.2	11.4	10.5	9.9		10.1	9.8	9.2	120
125	11.1	10.7	10.2	11.5	10.8	10.2	11.5	10.7	10.1	11.5	10.5	10	11.1	10.2	9.8		9.8	9.6	9.1	125
130	10.6	10.3	10	11	10.4	10	11.1	10.4	9.9	11.2	10.2	9.8	10.9	10	9.6		9.6	9.4	9	130
135	10	10	9.8	10.5	10.1	9.8	10.6	10.1	9.8	10.8	10	9.6	10.6	9.8	9.5		9.3	9.1	8.9	135
140	9.6	9.6	9.6	10.1	9.8	9.7	10.2	9.8	9.6	10.4	9.8	9.5	10.3	9.6	9.3		9	8.9	8.8	140
145	9.2	9.3	9.3	9.6	9.5	9.5	9.8	9.6	9.4	10	9.6	9.4	9.9	9.4	9.2		8.7	8.7	8.6	145
150	8.8	8.9	9	9.2	9.2	9.2	9.5	9.3	9.3	9.6	9.3	9.2	9.6	9.2	9.1		8.4	8.4	8.4	150
155	8.4	8.5	8.7	8.9	8.9	9	9.1	9	9.1	9.3	9.1	9.1	9.3	9.1	9		8.2	8.2	8.3	155
160	8.1	8.2	8.4	8.6	8.6	8.7	8.8	8.8	8.9	9	8.9	8.9	9	8.8	8.9		7.9	7.9	8	160
165	7.7	7.9	8.1	8.2	8.3	8.5	8.4	8.5	8.6	8.7	8.7	8.7	8.7	8.7	8.7		7.6	7.7	7.8	165
170	7.5	7.6	7.7	7.9	8	8.2	8.1	8.2	8.4	8.4	8.4	8.5	8.1	8.5	8.5		7.3	7.5	7.6	170
175	7.1	7.3	7.4	7.7	7.7	7.9	7.7	8	8.1	8.1	8.2	8.3	7.4	8.2	8.4		6.9	7.3	7.4	175
180	6.9	7		7.4	7.5	7.6	7.4	7.7	7.9	7.7	7.9	8.1	6.6	7.9	8.2		6.3	7	7.2	180
185	6.6	6.7		7.1	7.2	7.4	7.1	7.4	7.6	7.2	7.7	7.9	6	7.3	7.8		5.7	6.7	7	185
190	6.4	6.5		6.9	7	7.1	6.8	7.1	7.3	6.5	7.4	7.6	5.4	6.6	7.3		5.1	6.3	6.7	190
195	6.1	6.2		6.6	6.7		6.6	6.8	6.9	6	6.9	7.3	4.8	5.9	6.5		4.5	5.7	6.3	195
200	6	6.1		6.4	6.5		6.3	6.5	6.6	5.4	6.3	6.7	4.2	5.3	5.8		3.9	5	5.7	200
205	5.8			6.2	6.3		5.8	6.2	6.4	4.9	5.7	6	3.7	4.6	5.1		3.4	4.4	5	205
210				6.1	6.1		5.3	5.9	5.9	4.3	5.1	5.3	3.1	4.1	4.5		2.9	3.9	4.4	210
215				5.9	6		4.9	5.3		3.9	4.5	4.7	2.7	3.5	3.9		2.4	3.3	3.8	215
220				3.5			4.4	4.8		3.4	4	4.1	2.2	3	3.3		1.9	2.8	3.2	220
225							4	4.3		3	3.5		1.8	2.5	2.7		1.3	2.3	2.6	225
230							3.6			2.6	3			2	2.1		1.8	2.1		230
235										2.2	2.6			1.5	1.5				1.5	235
240										1.8	2.1									240
245										1.5										245

t_242_02410_00_000

STERLING CRANE

Lifting capacities Forces de levage

TVNZK


ft	44 ft + 23 ft			58 ft + 23 ft			72 ft + 23 ft			86 ft + 23 ft			100 ft + 23 ft			114 ft + 23 ft			ft
	86 ft			86 ft			86 ft			86 ft			86 ft			86 ft			
	0°	22.5°	45°	0°	22.5°	45°	0°	22.5°	45°	0°	22.5°	45°	0°	22.5°	45°	0°	22.5°	45°	
22	22.6			20.2															22
24	22.5			20.2															24
26	22.5			20.2															26
28	22.4			20.2			18.2												28
30	22.2			20.2			18.2												30
32	21.9			20.1			18.1			16.9									32
34	21.6			20			18.1			16.9									34
36	21.2			19.9			18			16.8			15.3						36
38	20.7			19.8			17.9			16.7			15.3			14.4			38
40	20.2			19.6			17.8			16.7			15.2			14.3			40
45	18.9			19			17.6			16.5			15.1			14.2			45
50	17.7			18.2			17.2			16.3			14.9			14.1			50
55	16.5	13.3		17.4			16.6			16.1			14.8			14			55
60	15.4	12.6		16.5	12.5		15.9			15.5			14.6			13.8			60
65	14.4	11.9		15.6	11.9		15.1	11.7		14.9	11.6		14.2			13.7			65
70	13.5	11.2		14.7	11.3		14.4	11.2		14.3	11.2		13.7			13.4			70
75	12.6	10.6		13.8	10.8		13.7	10.7		13.7	10.7		13.2	10.5		12.9			75
80	11.7	10.1	8.3	13	10.3	8.3	13	10.3		13.1	10.3		12.7	10.1		12.5	10.1		80
85	10.9	9.6	8	12.3	9.8	8.1	12.3	9.9	8	12.5	9.9		12.2	9.8		12	9.8		85
90	10.2	9.2	7.8	11.5	9.4	7.9	11.7	9.5	7.9	11.9	9.6		11.7	9.5		11.6	9.5		90
95	9.6	8.9	7.6	10.8	9.1	7.7	11	9.2	7.7	11.3	9.3	7.7	11.2	9.2	7.6	11.2	9.2		95
100	9	8.5	7.4	10.2	8.8	7.5	10.4	8.9	7.5	10.8	9	7.5	10.7	9	7.5	10.7	9	7.5	100
105	8.5	8.2	7.3	9.6	8.5	7.4	9.9	8.6	7.4	10.3	8.7	7.4	10.3	8.7	7.4	10.3	8.7	7.4	105
110	8	8	7.2	9	8.2	7.3	9.4	8.4	7.3	9.8	8.5	7.3	9.8	8.5	7.3	9.9	8.6	7.2	110
115	7.6	7.7	7.1	8.6	8	7.1	8.9	8.1	7.2	9.3	8.3	7.2	9.4	8.3	7.2	9.6	8.3	7.2	115
120	7.2	7.4	7	8.2	7.7	7.1	8.5	7.9	7.1	8.9	8.1	7.1	9	8.1	7.1	9.2	8.2	7.1	120
125	6.9	7	7	7.8	7.4	7	8.2	7.7	7	8.6	7.8	7	8.7	7.9	7	8.9	8	7	125
130	6.6	6.7	6.8	7.4	7.2	7	7.8	7.4	6.9	8.2	7.6	6.9	8.4	7.7	6.9	8.6	7.8	6.9	130
135	6.3	6.4	6.7	7.1	6.9	6.9	7.5	7.1	6.9	7.9	7.4	6.9	8.1	7.5	6.9	8.3	7.6	6.9	135
140	6	6.2		6.8	6.6	6.7	7.2	6.9	6.8	7.6	7.1	6.9	7.8	7.2	6.8	8	7.4	6.8	140
145	5.8			6.5	6.4		6.9	6.7	6.7	7.3	6.9	6.8	7.5	7.1	6.8	7.8	7.2	6.8	145
150				6.2	6.2		6.7	6.5	6.6	7.1	6.7	6.7	7.2	6.9	6.7	7.5	7	6.7	150
155				6	6.1		6.4	6.3	6.5	6.8	6.5	6.6	6.9	6.7	6.6	7.3	6.8	6.7	155
160							6.2	6.1		6.6	6.4	6.5	6.6	6.5	6.5	7	6.6	6.6	160
165							6	6		6.4	6.2	6.5	6.3	6.3	6.4	6.8	6.5	6.5	165
170							5.8	6		6.2	6.1		6.1	6.1	6.3	6.5	6.3	6.4	170
175										6	5.9		5.8	5.9	6.1	6.3	6.2	6.3	175
180										5.8	5.9		5.6	5.7		6.1	6	6.2	180
185										5.7			5.4	5.5		5.9	5.9	6	185
190													5.2	5.3		5.7	5.7	5.9	190
195													5	5.1		5.5	5.5		195
200													4.9			5.3	5.4		200
205																5.1	5.2		205
210																5	5.1		210
215																4.8			215

t_242_04400_00_000

STERLING CRANE

Lifting capacities Forces de levage

TVNZK



ft	128 ft + 23 ft			142 ft + 23 ft			156 ft + 23 ft			171 ft + 23 ft			185 ft + 23 ft			197 ft + 23 ft			ft
	86 ft			86 ft			86 ft			86 ft			86 ft			86 ft			
	0°	22.5°	45°	0°	22.5°	45°	0°	22.5°	45°	0°	22.5°	45°	0°	22.5°	45°	0°	22.5°	45°	
45	13.1			12.3															45
50	13			12.2															50
55	12.8			12.1			11.2												55
60	12.7			12			11.1			10.3			9.4						60
65	12.5			11.9			11			10.2			9.4			8.3			65
70	12.3			11.8			10.8			10.1			9.3			8.2			70
75	12.1			11.6			10.7			10			9.1			8.1			75
80	11.8	9.8		11.4			10.5			9.9			9.1			8			80
85	11.5	9.6		11.2	9.5		10.4			9.7			9			7.9			85
90	11.2	9.3		10.9	9.2		10.2			9.6			8.9			7.8			90
95	10.8	9.1		10.6	9		10.1	8.9		9.5	8.7		8.8			7.7			95
100	10.5	8.9		10.2	8.8		9.9	8.7		9.3	8.5		8.7	8.1		7.6			100
105	10.1	8.7	7.3	9.9	8.6	7.2	9.6	8.5		9.2	8.4		8.6	8		7.5	7.1		105
110	9.7	8.5	7.2	9.7	8.5	7.2	9.4	8.3		9	8.2		8.5	7.9		7.4	7.1		110
115	9.4	8.3	7.1	9.4	8.3	7.1	9.1	8.2	7	8.8	8.1	6.9	8.4	7.8		7.4	7.1		115
120	9.1	8.1	7	9.1	8.1	7	8.9	8	6.9	8.7	7.9	6.8	8.2	7.7	6.7	7.4	7.1		120
125	8.8	7.9	6.9	8.8	7.9	6.9	8.7	7.8	6.9	8.5	7.7	6.8	8.1	7.5	6.7	7.3	7	6.5	125
130	8.6	7.7	6.9	8.6	7.8	6.9	8.4	7.6	6.8	8.3	7.5	6.7	8	7.3	6.6	7.3	6.9	6.4	130
135	8.3	7.5	6.8	8.4	7.6	6.8	8.2	7.5	6.7	8.1	7.4	6.7	7.8	7.2	6.6	7.2	6.8	6.3	135
140	8.1	7.4	6.8	8.1	7.4	6.8	8	7.3	6.7	7.9	7.2	6.6	7.7	7.1	6.5	7.2	6.7	6.3	140
145	7.8	7.2	6.8	7.9	7.2	6.7	7.8	7.1	6.7	7.7	7.1	6.6	7.5	6.9	6.5	7.1	6.6	6.2	145
150	7.6	7	6.7	7.7	7.1	6.7	7.6	7	6.6	7.6	6.9	6.5	7.4	6.8	6.4	7	6.5	6.1	150
155	7.4	6.8	6.6	7.5	6.9	6.6	7.4	6.8	6.6	7.4	6.8	6.5	7.2	6.6	6.4	6.9	6.4	6.1	155
160	7.1	6.7	6.6	7.3	6.7	6.5	7.3	6.7	6.5	7.2	6.7	6.4	7.1	6.5	6.3	6.7	6.3	6	160
165	6.9	6.5	6.5	7.1	6.6	6.5	7.1	6.6	6.4	7.1	6.5	6.3	6.9	6.4	6.2	6.6	6.2	6	165
170	6.6	6.4	6.4	6.9	6.4	6.4	6.9	6.4	6.3	6.9	6.4	6.3	6.8	6.3	6.2	6.3	6.1	5.9	170
175	6.4	6.3	6.3	6.7	6.3	6.3	6.8	6.3	6.3	6.8	6.3	6.2	6.6	6.2	6.1	6.1	6	5.8	175
180	6.1	6.1	6.2	6.5	6.2	6.2	6.6	6.2	6.2	6.6	6.2	6.1	6.5	6.1	6	5.9	5.9	5.8	180
185	5.8	6	6.2	6.2	6.1	6.1	6.3	6.1	6.1	6.5	6.1	6.1	6.4	6	6	5.7	5.7	5.7	185
190	5.6	5.8	6	6	6	6.1	6.1	6	6	6.3	6	6	6.3	5.9	5.9	5.5	5.6	5.6	190
195	5.4	5.6	5.7	5.8	5.8	6	5.9	5.9	6	6.1	5.9	6	6.2	5.8	5.8	5.3	5.5	5.6	195
200	5.2	5.3	5.5	5.6	5.7	5.9	5.7	5.8	5.9	5.9	5.8	5.9	6	5.7	5.8	5.1	5.3	5.4	200
205	5	5.1		5.4	5.5	5.7	5.4	5.6	5.8	5.7	5.7	5.9	5.8	5.6	5.8	4.9	5.1	5.3	205
210	4.8	4.9		5.2	5.3	5.5	5.2	5.4	5.7	5.5	5.6	5.8	5.7	5.6	5.7	4.6	4.9	5.2	210
215	4.6	4.7		5	5.1		5	5.2	5.4	5.3	5.5	5.7	5.5	5.5	5.7	4.4	4.7	5	215
220	4.4	4.5		4.8	4.9		4.8	5	5.2	5.1	5.3	5.5	5.3	5.4	5.6	4.2	4.5	4.8	220
225	4.3			4.6	4.8		4.6	4.8	4.9	4.9	5.1	5.3	5	5.3	5.5	4	4.3	4.6	225
230				4.5	4.6		4.3	4.6	4.6	4.7	4.9	5.1	4.6	5.1	5.3	3.8	4.1	4.4	230
235				4.4	4.5		4.1	4.3		4.5	4.7	4.9	4.1	4.9	5.1	3.6	3.9	4.2	235
240				4.1			4	4.1		4.4	4.6	4.7	3.7	4.6	4.9	3.3	3.7	4	240
245							3.8	3.9		4.2	4.4	4.5	3.3	4.1	4.4	2.9	3.5	3.8	245
250							3.6	3.7		4	4.2		2.9	3.7	3.8	2.5	3.3	3.5	250
255							1.7			3.7	4		2.5	3.2	3.3	2.1	3	3.2	255
260										3.3	3.7		2.1	2.7		1.8	2.5	2.7	260
265										1.7			1.7	2.3		1.3	2.1	2.2	265
270													1.4	1.9			1.7		270
275														1.4					275

t_242_04400_00_000

STERLING CRANE

Lifting capacities Forces de levage

TVNZK


ft	44 ft + 23 ft			58 ft + 23 ft			72 ft + 23 ft			86 ft + 23 ft			100 ft + 23 ft			114 ft + 23 ft			ft
	86 ft			86 ft			86 ft			86 ft			86 ft			86 ft			
	0°	22.5°	45°	0°	22.5°	45°	0°	22.5°	45°	0°	22.5°	45°	0°	22.5°	45°	0°	22.5°	45°	
22	22.6			20.2															22
24	22.5			20.2															24
26	22.5			20.2															26
28	22.4			20.2			18.2												28
30	22.2			20.2			18.2												30
32	21.9			20.1			18.1			16.9									32
34	21.6			20			18.1			16.9									34
36	21.2			19.9			18			16.8			15.3						36
38	20.7			19.8			17.9			16.7			15.3			14.4			38
40	20.2			19.6			17.8			16.7			15.2			14.3			40
45	18.9			19			17.6			16.5			15.1			14.2			45
50	17.7			18.2			17.2			16.3			14.9			14.1			50
55	16.5	13.3		17.4			16.6			16.1			14.8			14			55
60	15.4	12.6		16.5	12.5		15.9			15.5			14.6			13.8			60
65	14.4	11.9		15.6	11.9		15.1	11.7		14.9	11.6		14.2			13.7			65
70	13.5	11.2		14.7	11.3		14.4	11.2		14.3	11.2		13.7			13.4			70
75	12.6	10.6		13.8	10.8		13.7	10.7		13.7	10.7		13.2	10.5		12.9			75
80	11.7	10.1	8.3	13	10.3	8.3	13	10.3		13.1	10.3		12.7	10.1		12.5	10.1		80
85	10.9	9.6	8	12.3	9.8	8.1	12.3	9.9	8	12.5	9.9		12.2	9.8		12	9.8		85
90	10.2	9.2	7.8	11.5	9.4	7.9	11.7	9.5	7.9	11.9	9.6		11.7	9.5		11.6	9.5		90
95	9.6	8.9	7.6	10.8	9.1	7.7	11	9.2	7.7	11.3	9.3	7.7	11.2	9.2	7.6	11.2	9.2		95
100	9	8.5	7.4	10.2	8.8	7.5	10.4	8.9	7.5	10.8	9	7.5	10.7	9	7.5	10.7	9	7.5	100
105	8.5	8.2	7.3	9.6	8.5	7.4	9.9	8.6	7.4	10.3	8.7	7.4	10.3	8.7	7.4	10.3	8.7	7.4	105
110	8	8	7.2	9	8.2	7.3	9.4	8.4	7.3	9.8	8.5	7.3	9.8	8.5	7.3	9.9	8.6	7.2	110
115	7.6	7.7	7.1	8.6	8	7.1	8.9	8.1	7.2	9.3	8.3	7.2	9.4	8.3	7.2	9.6	8.3	7.2	115
120	7.2	7.4	7	8.2	7.7	7.1	8.5	7.9	7.1	8.9	8.1	7.1	9	8.1	7.1	9.2	8.2	7.1	120
125	6.9	7	7	7.8	7.4	7	8.2	7.7	7	8.6	7.8	7	8.7	7.9	7	8.9	8	7	125
130	6.6	6.7	6.8	7.4	7.2	7	7.8	7.4	6.9	8.2	7.6	6.9	8.4	7.7	6.9	8.6	7.8	6.9	130
135	6.3	6.4	6.7	7.1	6.9	6.9	7.5	7.1	6.9	7.9	7.4	6.9	8.1	7.5	6.9	8.3	7.6	6.9	135
140	6	6.2		6.8	6.6	6.7	7.2	6.9	6.8	7.6	7.1	6.9	7.8	7.2	6.8	8	7.4	6.8	140
145	5.8			6.5	6.4		6.9	6.7	6.7	7.3	6.9	6.8	7.5	7.1	6.8	7.8	7.2	6.8	145
150				6.2	6.2		6.7	6.5	6.6	7.1	6.7	6.7	7.2	6.9	6.7	7.5	7	6.7	150
155				6	6.1		6.4	6.3	6.5	6.8	6.5	6.6	6.9	6.7	6.6	7.3	6.8	6.7	155
160							6.2	6.1		6.6	6.4	6.5	6.6	6.5	6.5	7	6.6	6.6	160
165							6	6		6.4	6.2	6.5	6.3	6.3	6.4	6.8	6.5	6.5	165
170							5.8	6		6.2	6.1		6.1	6.1	6.3	6.5	6.3	6.4	170
175										6	5.9		5.8	5.9	6.1	6.3	6.2	6.3	175
180										5.8	5.9		5.6	5.7		6.1	6	6.2	180
185										5.7			5.4	5.5		5.9	5.9	6	185
190													5.2	5.3		5.7	5.7	5.9	190
195													5	5.1		5.5	5.5		195
200													4.9			5.3	5.4		200
205																5.1	5.2		205
210																5	5.1		210
215																4.8			215

t_242_04410_00_000

STERLING CRANE

Lifting capacities Forces de levage

TVNZK



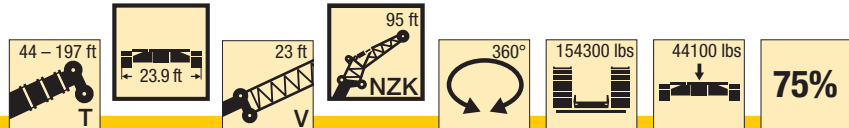
ft	128 ft + 23 ft			142 ft + 23 ft			156 ft + 23 ft			171 ft + 23 ft			185 ft + 23 ft			197 ft + 23 ft			ft
	86 ft			86 ft			86 ft			86 ft			86 ft			86 ft			
	0°	22.5°	45°	0°	22.5°	45°	0°	22.5°	45°	0°	22.5°	45°	0°	22.5°	45°	0°	22.5°	45°	
45	13.1			12.3															45
50	13			12.2															50
55	12.8			12.1			11.2												55
60	12.7			12			11.1			10.3			9.4						60
65	12.5			11.9			11			10.2			9.4			8.3			65
70	12.3			11.8			10.8			10.1			9.3			8.2			70
75	12.1			11.6			10.7			10			9.1			8.1			75
80	11.8	9.8		11.4			10.5			9.9			9.1			8			80
85	11.5	9.6		11.2	9.5		10.4			9.7			9			7.9			85
90	11.2	9.3		10.9	9.2		10.2			9.6			8.9			7.8			90
95	10.8	9.1		10.6	9		10.1	8.9		9.5	8.7		8.8			7.7			95
100	10.5	8.9		10.2	8.8		9.9	8.7		9.3	8.5		8.7	8.1		7.6			100
105	10.1	8.7	7.3	9.9	8.6	7.2	9.6	8.5		9.2	8.4		8.6	8		7.5	7.1		105
110	9.7	8.5	7.2	9.7	8.5	7.2	9.4	8.3		9	8.2		8.5	7.9		7.4	7.1		110
115	9.4	8.3	7.1	9.4	8.3	7.1	9.1	8.2	7	8.8	8.1	6.9	8.4	7.8		7.4	7.1		115
120	9.1	8.1	7	9.1	8.1	7	8.9	8	6.9	8.7	7.9	6.8	8.2	7.7	6.7	7.4	7.1		120
125	8.8	7.9	6.9	8.8	7.9	6.9	8.7	7.8	6.9	8.5	7.7	6.8	8.1	7.5	6.7	7.3	7	6.5	125
130	8.6	7.7	6.9	8.6	7.8	6.9	8.4	7.6	6.8	8.3	7.5	6.7	8	7.3	6.6	7.3	6.9	6.4	130
135	8.3	7.5	6.8	8.4	7.6	6.8	8.2	7.5	6.7	8.1	7.4	6.7	7.8	7.2	6.6	7.2	6.8	6.3	135
140	8.1	7.4	6.8	8.1	7.4	6.8	8	7.3	6.7	7.9	7.2	6.6	7.7	7.1	6.5	7.2	6.7	6.3	140
145	7.8	7.2	6.8	7.9	7.2	6.7	7.8	7.1	6.7	7.7	7.1	6.6	7.5	6.9	6.5	7.1	6.6	6.2	145
150	7.6	7	6.7	7.7	7.1	6.7	7.6	7	6.6	7.6	6.9	6.5	7.4	6.8	6.4	7	6.5	6.1	150
155	7.4	6.8	6.6	7.5	6.9	6.6	7.4	6.8	6.6	7.4	6.8	6.5	7.2	6.6	6.4	6.9	6.4	6.1	155
160	7.1	6.7	6.6	7.3	6.7	6.5	7.3	6.7	6.5	7.2	6.7	6.4	7.1	6.5	6.3	6.7	6.3	6	160
165	6.9	6.5	6.5	7.1	6.6	6.5	7.1	6.6	6.4	7.1	6.5	6.3	6.9	6.4	6.2	6.6	6.2	6	165
170	6.6	6.4	6.4	6.9	6.4	6.4	6.9	6.4	6.3	6.9	6.4	6.3	6.8	6.3	6.2	6.3	6.1	5.9	170
175	6.4	6.3	6.3	6.7	6.3	6.3	6.8	6.3	6.3	6.8	6.3	6.2	6.6	6.2	6.1	6.1	6	5.8	175
180	6.1	6.1	6.2	6.5	6.2	6.2	6.6	6.2	6.2	6.6	6.2	6.1	6.5	6.1	6	5.9	5.9	5.8	180
185	5.8	6	6.2	6.2	6.1	6.1	6.3	6.1	6.1	6.5	6.1	6.1	6	6	6	5.4	5.7	5.7	185
190	5.6	5.8	6	6	6	6.1	6.1	6	6	6.3	6	6	5.5	5.9	5.9	4.9	5.6	5.6	190
195	5.4	5.6	5.7	5.8	5.8	6	5.9	5.9	6	6	5.9	6	5	5.8	5.8	4.4	5.5	5.6	195
200	5.2	5.3	5.5	5.6	5.7	5.9	5.7	5.8	5.9	5.6	5.8	5.9	4.4	5.7	5.8	3.9	5.3	5.4	200
205	5	5.1		5.4	5.5	5.7	5.4	5.6	5.8	5	5.7	5.9	3.9	5.3	5.8	3.4	4.9	5.3	205
210	4.8	4.9		5.2	5.3	5.5	5.2	5.4	5.7	4.5	5.6	5.8	3.3	4.8	5.5	2.9	4.4	5.1	210
215	4.6	4.7		5	5.1		4.9	5.2	5.4	4	5.2	5.6	2.9	4.2	5	2.5	3.9	4.8	215
220	4.4	4.5		4.8	4.9		4.5	5	5.2	3.6	4.6	5.2	2.4	3.7	4.4	2	3.4	4.2	220
225	4.3			4.6	4.8		4.1	4.8	4.9	3.1	4.1	4.5	2	3.2	3.8	1.5	2.9	3.6	225
230				4.5	4.6		3.7	4.4	4.5	2.7	3.6	4	1.5	2.7	3.2		2.4	3.1	230
235				4.3	4.5		3.3	3.9		2.3	3.1	3.4		2.2	2.6		2	2.5	235
240				4			2.9	3.4		2	2.7	2.8		1.7	2.1		1.4	2	240
245							2.6	3		1.6	2.3	2.3			1.5			1.4	245
250							2.3	2.5											250
255							1.7												255

t_242_04410_00_000

STERLING CRANE

Lifting capacities Forces de levage

TVNZK



ft	44 ft + 23 ft			58 ft + 23 ft			72 ft + 23 ft			86 ft + 23 ft			100 ft + 23 ft			114 ft + 23 ft			ft
	95 ft			95 ft			95 ft			95 ft			95 ft			95 ft			
	0°	22.5°	45°	0°	22.5°	45°	0°	22.5°	45°	0°	22.5°	45°	0°	22.5°	45°	0°	22.5°	45°	
22	15.2																		22
24	15.2																		24
26	15.2			14.4															26
28	15.1			14.4			13.4												28
30	15.1			14.4			13.3												30
32	15.1			14.3			13.3			12.7									32
34	15			14.3			13.3			12.6			11.8						34
36	15			14.2			13.2			12.6			11.7						36
38	14.9			14.2			13.2			12.5			11.7			11.2			38
40	14.8			14.1			13.1			12.5			11.7			11.1			40
45	14.5			14			13			12.4			11.6			11.1			45
50	14			13.7			12.9			12.4			11.5			11			50
55	13.5			13.3			12.7			12.3			11.5			10.9			55
60	12.9	10.6		12.8			12.3			12.1			11.4			10.9			60
65	12.3	10.1		12.3	10		12	9.8		11.8			11.2			10.8			65
70	11.7	9.6		11.8	9.6		11.6	9.5		11.4			11			10.7			70
75	11.1	9.2		11.3	9.2		11.2	9.1		11.1	9.1		10.7			10.5			75
80	10.6	8.8		10.8	8.9		10.7	8.8		10.7	8.8		10.4	8.7		10.2	8.6		80
85	10	8.5	7.1	10.3	8.6		10.3	8.5		10.3	8.5		10.1	8.4		10	8.4		85
90	9.5	8.1	6.9	9.8	8.3		9.9	8.3		10	8.3		9.8	8.2		9.7	8.2		90
95	9.1	7.8	6.7	9.4	8	6.7	9.5	8	6.7	9.6	8		9.5	8		9.4	8		95
100	8.7	7.6	6.5	9	7.7	6.6	9.1	7.8	6.6	9.3	7.8	6.5	9.2	7.8	6.5	9.2	7.8		100
105	8.3	7.3	6.4	8.7	7.5	6.4	8.8	7.5	6.4	9	7.6	6.4	9	7.6	6.4	8.9	7.6	6.3	105
110	7.9	7.1	6.3	8.3	7.2	6.3	8.5	7.3	6.3	8.7	7.4	6.3	8.7	7.4	6.3	8.7	7.4	6.3	110
115	7.6	6.8	6.2	8	7	6.2	8.2	7.1	6.2	8.4	7.2	6.2	8.4	7.2	6.2	8.5	7.2	6.2	115
120	7.2	6.7	6.1	7.7	6.8	6.1	7.9	6.9	6.1	8.1	7	6.1	8.2	7.1	6.1	8.3	7.1	6.1	120
125	6.9	6.5	6	7.4	6.6	6	7.6	6.8	6.1	7.9	6.9	6.1	7.9	6.9	6	8	6.9	6	125
130	6.5	6.3	6	7	6.5	6	7.3	6.6	6	7.6	6.7	6	7.7	6.8	6	7.8	6.8	5.9	130
135	6.2	6.1	6	6.7	6.4	6	7	6.5	5.9	7.3	6.6	5.9	7.4	6.6	5.9	7.6	6.7	5.9	135
140	6	5.9	6	6.4	6.2	6	6.8	6.3	5.9	7.1	6.4	5.9	7.2	6.5	5.9	7.4	6.5	5.8	140
145	5.7	5.7	6	6.2	6	6	6.5	6.2	5.9	6.8	6.3	5.9	7	6.4	5.8	7.1	6.4	5.8	145
150	5.4	5.5		5.9	5.8	6	6.3	6.1	5.9	6.6	6.2	5.8	6.7	6.2	5.8	6.9	6.3	5.8	150
155				5.7	5.7	6	6.1	5.9	5.9	6.4	6.1	5.8	6.5	6.1	5.8	6.7	6.2	5.8	155
160				5.5	5.5		5.8	5.7	5.9	6.2	5.9	5.8	6.3	6	5.8	6.5	6.1	5.7	160
165				5.3	5.4		5.6	5.6		5.9	5.8	5.8	6.1	5.9	5.8	6.3	6	5.7	165
170							5.4	5.5		5.8	5.6	5.8	5.9	5.7	5.8	6.2	5.8	5.7	170
175							5.3	5.4		5.6	5.5	5.8	5.7	5.6	5.7	6	5.7	5.7	175
180							5.2			5.4	5.4		5.5	5.5	5.7	5.8	5.6	5.7	180
185										5.3	5.3		5.3	5.3	5.5	5.7	5.5	5.7	185
190										5.2	5.3		5.1	5.2		5.5	5.4	5.6	190
195										5.1			4.9	5		5.3	5.3	5.5	195
200													4.7	4.8		5.1	5.2	5.4	200
205													4.6	4.7		5	5		205
210													4.5			4.8	4.9		210
215																4.7	4.8		215
220																4.6	4.7		220

t_242_05400_00_000

STERLING CRANE

Lifting capacities Forces de levage

TVNZK



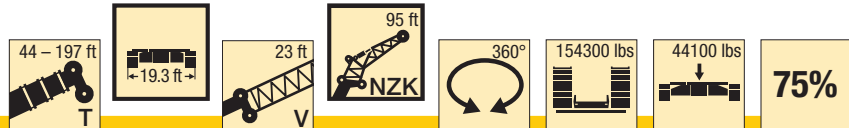
ft	128 ft + 23 ft			142 ft + 23 ft			156 ft + 23 ft			171 ft + 23 ft			185 ft + 23 ft			197 ft + 23 ft			ft
	95 ft			95 ft			95 ft			95 ft			95 ft			95 ft			
	0°	22.5°	45°	0°	22.5°	45°	0°	22.5°	45°	0°	22.5°	45°	0°	22.5°	45°	0°	22.5°	45°	
45	10.3			9.9															45
50	10.3			9.8															50
55	10.2			9.8			9.2												55
60	10.2			9.7			9.2			8.6			8						60
65	10.1			9.6			9.1			8.6			8			7.2			65
70	10			9.6			9.1			8.5			8			7.2			70
75	9.9			9.5			9			8.5			7.9			7.1			75
80	9.8			9.5			9			8.4			7.9			7.1			80
85	9.6	8.2		9.4			8.9			8.4			7.9			7			85
90	9.4	8		9.2			8.9	7.8		8.3			7.8			6.9			90
95	9.2	7.8		9	7.8		8.8	7.6		8.3			7.8			6.8			95
100	9	7.7		8.9	7.6		8.6	7.5		8.2	7.3		7.7			6.8			100
105	8.8	7.5		8.7	7.5		8.5	7.3		8.1	7.2		7.6	7		6.7			105
110	8.6	7.3		8.5	7.3		8.3	7.2		8	7.1		7.5	6.9		6.6	6.4		110
115	8.4	7.2	6.1	8.3	7.1	6.1	8.1	7		7.8	6.9		7.5	6.8		6.6	6.4		115
120	8.2	7	6.1	8.1	7	6	7.9	6.9	6	7.7	6.8		7.4	6.7		6.5	6.3		120
125	8	6.9	6	7.9	6.9	5.9	7.8	6.8	5.9	7.6	6.7	5.8	7.3	6.6	5.7	6.5	6.3		125
130	7.7	6.8	5.9	7.7	6.8	5.9	7.6	6.7	5.8	7.4	6.6	5.8	7.2	6.5	5.7	6.5	6.2	5.6	130
135	7.5	6.6	5.9	7.5	6.6	5.8	7.4	6.6	5.8	7.3	6.5	5.7	7	6.4	5.6	6.4	6.1	5.5	135
140	7.3	6.5	5.8	7.4	6.5	5.8	7.3	6.5	5.7	7.1	6.4	5.7	6.9	6.3	5.6	6.4	6.1	5.5	140
145	7.1	6.4	5.8	7.2	6.4	5.7	7.1	6.4	5.7	7	6.3	5.6	6.8	6.2	5.6	6.3	6	5.4	145
150	7	6.3	5.7	7	6.3	5.7	6.9	6.3	5.7	6.8	6.2	5.6	6.6	6.1	5.5	6.3	5.9	5.4	150
155	6.8	6.2	5.7	6.8	6.2	5.7	6.8	6.2	5.6	6.7	6.1	5.6	6.5	6	5.5	6.2	5.8	5.4	155
160	6.6	6.1	5.7	6.6	6.1	5.6	6.6	6.1	5.6	6.5	6	5.5	6.4	5.9	5.5	6	5.7	5.4	160
165	6.4	6	5.7	6.5	6	5.6	6.4	6	5.6	6.4	5.9	5.5	6.3	5.8	5.4	6	5.6	5.3	165
170	6.2	5.9	5.7	6.3	5.9	5.6	6.3	5.9	5.6	6.3	5.8	5.5	6.2	5.7	5.4	5.8	5.5	5.3	170
175	6.1	5.8	5.7	6.2	5.8	5.6	6.2	5.8	5.6	6.1	5.7	5.5	6	5.6	5.4	5.7	5.4	5.3	175
180	5.9	5.6	5.6	6	5.7	5.6	6	5.7	5.6	6	5.6	5.5	5.9	5.5	5.4	5.6	5.3	5.3	180
185	5.7	5.5	5.6	5.9	5.6	5.6	5.9	5.6	5.5	5.9	5.5	5.4	5.8	5.5	5.4	5.4	5.3	5.3	185
190	5.5	5.4	5.6	5.7	5.5	5.5	5.8	5.5	5.5	5.8	5.4	5.4	5.7	5.4	5.4	5.3	5.2	5.2	190
195	5.3	5.3	5.5	5.6	5.4	5.5	5.7	5.4	5.4	5.7	5.4	5.4	5.6	5.3	5.3	5.1	5.1	5.2	195
200	5.1	5.2	5.4	5.4	5.3	5.5	5.5	5.3	5.4	5.5	5.3	5.3	5.5	5.2	5.3	5	5	5.1	200
205	4.9	5.1	5.3	5.2	5.2	5.4	5.3	5.2	5.4	5.4	5.2	5.3	5.4	5.1	5.2	4.8	4.9	5	205
210	4.7	4.9		5.1	5.1	5.3	5.1	5.1	5.4	5.3	5.1	5.3	5.3	5.1	5.2	4.6	4.8	5	210
215	4.5	4.7		4.9	5	5.2	4.9	5	5.3	5.2	5.1	5.2	5.2	5	5.2	4.3	4.7	4.9	215
220	4.3	4.5		4.7	4.8	5	4.7	4.9	5.2	5	5	5.2	5.1	4.9	5.1	4.1	4.5	4.8	220
225	4.2	4.3		4.5	4.7		4.5	4.8	5	4.8	4.9	5.2	5	4.9	5.1	4	4.4	4.6	225
230	4	4.1		4.4	4.5		4.4	4.6	4.7	4.7	4.8	5.1	4.8	4.8	5.1	3.8	4.2	4.5	230
235	3.9			4.2	4.4		4.2	4.4	4.5	4.5	4.7	4.9	4.4	4.8	5	3.6	4	4.2	235
240				4.1	4.2		4	4.2		4.3	4.5	4.7	4	4.6	4.9	3.4	3.8	4	240
245				4	4.1		3.8	4		4.1	4.4	4.5	3.6	4.5	4.7	3.1	3.6	3.8	245
250				3.2			3.6	3.8		4	4.2	4.3	3.2	4.1	4.5	2.7	3.4	3.6	250
255							3.5	3.6		3.8	4		2.8	3.7	4	2.4	3.2	3.4	255
260							3.3			3.6	3.8		2.4	3.2	3.4	2	2.9	3.1	260
265										3.2	3.7		2	2.8	2.8	1.6	2.6	2.8	265
270										2.8	3.3		1.7	2.4		2.1	2.3		270
275													1.4	2		1.7			275
280														1.5					280

t_242_05400_00_000

STERLING CRANE

Lifting capacities Forces de levage

TVNZK



ft	44 ft + 23 ft			58 ft + 23 ft			72 ft + 23 ft			86 ft + 23 ft			100 ft + 23 ft			114 ft + 23 ft			ft
	95 ft			95 ft			95 ft			95 ft			95 ft			95 ft			
	0°	22.5°	45°	0°	22.5°	45°	0°	22.5°	45°	0°	22.5°	45°	0°	22.5°	45°	0°	22.5°	45°	
22	15.2																		22
24	15.2																		24
26	15.2			14.4															26
28	15.1			14.4			13.4												28
30	15.1			14.4			13.3												30
32	15.1			14.3			13.3			12.7									32
34	15			14.3			13.3			12.6			11.8						34
36	15			14.2			13.2			12.6			11.7						36
38	14.9			14.2			13.2			12.5			11.7			11.2			38
40	14.8			14.1			13.1			12.5			11.7			11.1			40
45	14.5			14			13			12.4			11.6			11.1			45
50	14			13.7			12.9			12.4			11.5			11			50
55	13.5			13.3			12.7			12.3			11.5			10.9			55
60	12.9	10.6		12.8			12.3			12.1			11.4			10.9			60
65	12.3	10.1		12.3	10		12	9.8		11.8			11.2			10.8			65
70	11.7	9.6		11.8	9.6		11.6	9.5		11.4			11			10.7			70
75	11.1	9.2		11.3	9.2		11.2	9.1		11.1	9.1		10.7			10.5			75
80	10.6	8.8		10.8	8.9		10.7	8.8		10.7	8.8		10.4	8.7		10.2	8.6		80
85	10	8.5	7.1	10.3	8.6		10.3	8.5		10.3	8.5		10.1	8.4		10	8.4		85
90	9.5	8.1	6.9	9.8	8.3		9.9	8.3		10	8.3		9.8	8.2		9.7	8.2		90
95	9.1	7.8	6.7	9.4	8	6.7	9.5	8	6.7	9.6	8		9.5	8		9.4	8		95
100	8.7	7.6	6.5	9	7.7	6.6	9.1	7.8	6.6	9.3	7.8	6.5	9.2	7.8	6.5	9.2	7.8		100
105	8.3	7.3	6.4	8.7	7.5	6.4	8.8	7.5	6.4	9	7.6	6.4	9	7.6	6.4	8.9	7.6	6.3	105
110	7.9	7.1	6.3	8.3	7.2	6.3	8.5	7.3	6.3	8.7	7.4	6.3	8.7	7.4	6.3	8.7	7.4	6.3	110
115	7.6	6.8	6.2	8	7	6.2	8.2	7.1	6.2	8.4	7.2	6.2	8.4	7.2	6.2	8.5	7.2	6.2	115
120	7.2	6.7	6.1	7.7	6.8	6.1	7.9	6.9	6.1	8.1	7	6.1	8.2	7.1	6.1	8.3	7.1	6.1	120
125	6.9	6.5	6	7.4	6.6	6	7.6	6.8	6.1	7.9	6.9	6.1	7.9	6.9	6	8	6.9	6	125
130	6.5	6.3	6	7	6.5	6	7.3	6.6	6	7.6	6.7	6	7.7	6.8	6	7.8	6.8	5.9	130
135	6.2	6.1	6	6.7	6.4	6	7	6.5	5.9	7.3	6.6	5.9	7.4	6.6	5.9	7.6	6.7	5.9	135
140	6	5.9	6	6.4	6.2	6	6.8	6.3	5.9	7.1	6.4	5.9	7.2	6.5	5.9	7.4	6.5	5.8	140
145	5.7	5.7	6	6.2	6	6	6.5	6.2	5.9	6.8	6.3	5.9	7	6.4	5.8	7.1	6.4	5.8	145
150	5.4	5.5		5.9	5.8	6	6.3	6.1	5.9	6.6	6.2	5.8	6.7	6.2	5.8	6.9	6.3	5.8	150
155				5.7	5.7	6	6.1	5.9	5.9	6.4	6.1	5.8	6.5	6.1	5.8	6.7	6.2	5.8	155
160				5.5	5.5		5.8	5.7	5.9	6.2	5.9	5.8	6.3	6	5.8	6.5	6.1	5.7	160
165				5.3	5.4		5.6	5.6		5.9	5.8	5.8	6.1	5.9	5.8	6.3	6	5.7	165
170							5.4	5.5		5.8	5.6	5.8	5.9	5.7	5.8	6.2	5.8	5.7	170
175							5.3	5.4		5.6	5.5	5.8	5.7	5.6	5.7	6	5.7	5.7	175
180							5.2			5.4	5.4		5.5	5.5	5.7	5.8	5.6	5.7	180
185										5.3	5.3		5.3	5.3	5.5	5.7	5.5	5.7	185
190										5.2	5.3		5.1	5.2		5.5	5.4	5.6	190
195										5.1			4.9	5		5.3	5.3	5.5	195
200													4.7	4.8		5.1	5.2	5.4	200
205													4.6	4.7		5	5		205
210													4.5			4.8	4.9		210
215																4.7	4.8		215
220																4.6	4.7		220

t_242_05410_00_000

STERLING CRANE

Lifting capacities Forces de levage

TVNZK




ft	128 ft + 23 ft			142 ft + 23 ft			156 ft + 23 ft			171 ft + 23 ft			185 ft + 23 ft			197 ft + 23 ft			ft
	95 ft			95 ft			95 ft			95 ft			95 ft			95 ft			
	0°	22.5°	45°	0°	22.5°	45°	0°	22.5°	45°	0°	22.5°	45°	0°	22.5°	45°	0°	22.5°	45°	
45	10.3			9.9															45
50	10.3			9.8															50
55	10.2			9.8					9.2										55
60	10.2			9.7					9.2			8.6			8				60
65	10.1			9.6					9.1			8.6			8			7.2	65
70	10			9.6					9.1			8.5			8			7.2	70
75	9.9			9.5					9			8.5			7.9			7.1	75
80	9.8			9.5					9			8.4			7.9			7.1	80
85	9.6	8.2		9.4					8.9			8.4			7.9			7	85
90	9.4	8		9.2					8.9	7.8		8.3			7.8			6.9	90
95	9.2	7.8		9	7.8				8.8	7.6		8.3			7.8			6.8	95
100	9	7.7		8.9	7.6				8.6	7.5		8.2			7.7			6.8	100
105	8.8	7.5		8.7	7.5				8.5	7.3		8.1	7.2		7.6	7		6.7	105
110	8.6	7.3		8.5	7.3				8.3	7.2		8	7.1		7.5	6.9		6.6	110
115	8.4	7.2	6.1	8.3	7.1	6.1			8.1	7		7.8	6.9		7.5	6.8		6.6	115
120	8.2	7	6.1	8.1	7	6			7.9	6.9	6	7.7	6.8		7.4	6.7		6.5	120
125	8	6.9	6	7.9	6.9	5.9			7.8	6.8	5.9	7.6	6.7	5.8	7.3	6.6	5.7	6.5	125
130	7.7	6.8	5.9	7.7	6.8	5.9			7.6	6.7	5.8	7.4	6.6	5.8	7.2	6.5	5.7	6.5	130
135	7.5	6.6	5.9	7.5	6.6	5.8			7.4	6.6	5.8	7.3	6.5	5.7	7	6.4	5.6	6.4	135
140	7.3	6.5	5.8	7.4	6.5	5.8			7.3	6.5	5.7	7.1	6.4	5.7	6.9	6.3	5.6	6.4	140
145	7.1	6.4	5.8	7.2	6.4	5.7			7.1	6.4	5.7	7	6.3	5.6	6.8	6.2	5.6	6.3	145
150	7	6.3	5.7	7	6.3	5.7			6.9	6.3	5.7	6.8	6.2	5.6	6.6	6.1	5.5	6.3	150
155	6.8	6.2	5.7	6.8	6.2	5.7			6.8	6.2	5.6	6.7	6.1	5.6	6.5	6	5.5	6.2	155
160	6.6	6.1	5.7	6.6	6.1	5.6			6.6	6.1	5.6	6.5	6	5.5	6.4	5.9	5.5	6	160
165	6.4	6	5.7	6.5	6	5.6			6.4	6	5.6	6.4	5.9	5.5	6.3	5.8	5.4	6	165
170	6.2	5.9	5.7	6.3	5.9	5.6			6.3	5.9	5.6	6.3	5.8	5.5	6.2	5.7	5.4	5.8	170
175	6.1	5.8	5.7	6.2	5.8	5.6			6.2	5.8	5.6	6.1	5.7	5.5	6	5.6	5.4	5.7	175
180	5.9	5.6	5.6	6	5.7	5.6			6	5.7	5.6	6	5.6	5.5	5.9	5.5	5.4	5.6	180
185	5.7	5.5	5.6	5.9	5.6	5.6			5.9	5.6	5.5	5.9	5.5	5.4	5.8	5.5	5.4	5.4	185
190	5.5	5.4	5.6	5.7	5.5	5.5			5.8	5.5	5.5	5.8	5.4	5.4	5.5	5.4	5.4	5	190
195	5.3	5.3	5.5	5.6	5.4	5.5			5.7	5.4	5.4	5.7	5.4	5.4	5.2	5.3	5.3	4.6	195
200	5.1	5.2	5.4	5.4	5.3	5.5			5.5	5.3	5.4	5.5	5.3	5.3	4.7	5.2	5.3	4.1	200
205	4.9	5.1	5.3	5.2	5.2	5.4			5.3	5.2	5.4	5.3	5.2	5.3	4.2	5.1	5.2	3.6	205
210	4.7	4.9		5.1	5.1	5.3			5.1	5.1	5.4	4.8	5.1	5.3	3.7	5	5.2	3.2	210
215	4.5	4.7		4.9	5	5.2			4.9	5	5.3	4.3	5.1	5.2	3.2	4.7	5.2	2.7	215
220	4.3	4.5		4.7	4.8	5			4.7	4.9	5.2	3.9	5	5.2	2.7	4.2	5	2.3	220
225	4.2	4.3		4.5	4.7				4.4	4.8	5	3.4	4.6	5.1	2.3	3.7	4.5	1.9	225
230	4	4.1		4.4	4.5				4	4.6	4.7	3	4.1	4.6	1.9	3.1	3.9		230
235	3.9			4.2	4.4				3.6	4.4	4.5	2.6	3.6	4.1	1.3	2.7	3.3		235
240				4.1	4.2				3.2	3.9		2.2	3.2	3.5		2.2	2.8		240
245				3.9	4.1				2.9	3.5		1.9	2.7	3		1.8	2.2		245
250				3.2					2.5	3		1.5	2.3	2.4			1.7		250
255									2.2	2.6			1.9						255
260									1.9				1.5						260

t_242_05410_00_000

STERLING CRANE

Lifting capacities Forces de levage

TVNZK




ft	44 ft + 23 ft			58 ft + 23 ft			72 ft + 23 ft			86 ft + 23 ft			100 ft + 23 ft			114 ft + 23 ft			ft
	118 ft			118 ft			118 ft			118 ft			118 ft			118 ft			
	0°	22.5°	45°	0°	22.5°	45°	0°	22.5°	45°	0°	22.5°	45°	0°	22.5°	45°	0°	22.5°	45°	
24	10.1																		24
26	10.5																		26
28	10.8			9.9															28
30	11			10.1															30
32	11			10.3			9.3												32
34	10.9			10.3			9.4			8.9									34
36	10.9			10.3			9.5			9									36
38	10.8			10.2			9.5			9.1									38
40	10.8			10.2			9.5			9									40
45	10.5			10.1			9.4			9			8.4			8.1			45
50	10.2			9.9			9.3			8.9			8.4			8			50
55	9.8			9.6			9.1			8.8			8.3			8			55
60	9.4			9.3			8.9			8.7			8.3			7.9			60
65	9.1			9			8.7			8.5			8.2			7.9			65
70	8.7	7.2		8.6			8.4			8.3			8			7.8			70
75	8.3	6.9		8.3			8.1			8			7.8			7.6			75
80	7.9	6.6		8	6.6		7.9			7.8			7.6			7.4			80
85	7.5	6.3		7.7	6.3		7.6	6.2		7.5	6.2		7.4			7.2			85
90	7.2	6		7.3	6.1		7.3	6		7.3	6		7.1	5.9		7.1	5.8		90
95	6.9	5.8		7	5.8		7	5.8		7.1	5.8		6.9	5.7		6.9	5.7		95
100	6.6	5.5		6.7	5.6		6.8	5.6		6.8	5.6		6.7	5.5		6.7	5.5		100
105	6.2	5.3	4.4	6.4	5.4		6.5	5.4		6.6	5.4		6.5	5.4		6.5	5.3		105
110	6	5.1	4.3	6.2	5.2	4.3	6.3	5.2	4.3	6.4	5.3		6.3	5.2		6.3	5.2		110
115	5.7	4.9	4.2	5.9	5	4.2	6	5.1	4.2	6.2	5.1		6.1	5.1		6.1	5.1		115
120	5.4	4.8	4.1	5.7	4.9	4.1	5.8	4.9	4.1	5.9	4.9	4.1	6	4.9		6	4.9		120
125	5.2	4.6	4	5.5	4.7	4	5.6	4.7	4	5.7	4.8	4	5.8	4.8	4	5.8	4.8	3.9	125
130	5	4.4	3.9	5.3	4.6	3.9	5.4	4.6	3.9	5.5	4.6	3.9	5.6	4.7	3.9	5.6	4.7	3.9	130
135	4.8	4.3	3.8	5	4.4	3.9	5.2	4.5	3.8	5.3	4.5	3.8	5.4	4.5	3.8	5.5	4.5	3.8	135
140	4.6	4.2	3.8	4.9	4.3	3.8	5	4.3	3.8	5.2	4.4	3.8	5.2	4.4	3.8	5.3	4.4	3.7	140
145	4.4	4	3.7	4.7	4.2	3.7	4.8	4.2	3.7	5	4.3	3.7	5.1	4.3	3.7	5.1	4.3	3.7	145
150	4.2	3.9	3.7	4.5	4	3.7	4.7	4.1	3.7	4.9	4.2	3.7	4.9	4.2	3.7	5	4.2	3.6	150
155	4	3.8	3.7	4.3	3.9	3.7	4.5	4	3.6	4.7	4.1	3.6	4.8	4.1	3.6	4.9	4.2	3.6	155
160	3.8	3.7	3.7	4.2	3.9	3.6	4.4	3.9	3.6	4.6	4	3.6	4.6	4	3.6	4.7	4.1	3.6	160
165	3.7	3.7	3.7	4	3.8	3.6	4.2	3.9	3.6	4.4	3.9	3.6	4.5	3.9	3.5	4.6	4	3.5	165
170	3.5	3.7		3.9	3.7	3.6	4.1	3.8	3.6	4.3	3.8	3.6	4.4	3.9	3.5	4.5	3.9	3.5	170
175	3.4	3.7		3.7	3.7		4	3.7	3.6	4.1	3.8	3.6	4.3	3.8	3.5	4.4	3.8	3.5	175
180				3.6	3.6		3.8	3.6	3.6	4.1	3.7	3.6	4.1	3.7	3.5	4.3	3.8	3.5	180
185				3.4	3.6		3.7	3.6	3.6	3.9	3.6	3.6	4	3.7	3.5	4.1	3.7	3.5	185
190				3.3			3.6	3.6		3.8	3.6	3.6	3.9	3.6	3.5	4	3.6	3.5	190
195							3.5	3.6		3.7	3.6	3.6	3.8	3.6	3.5	3.9	3.6	3.5	195
200							3.4	3.5		3.6	3.5		3.8	3.5	3.5	3.8	3.5	3.5	200
205							3.3			3.5	3.5		3.7	3.5	3.5	3.8	3.5	3.5	205
210										3.4	3.5		3.5	3.5		3.7	3.5	3.5	210
215										3.3	3.5		3.5	3.4		3.6	3.4	3.5	215
220													3.4	3.4		3.5	3.4		220
225													3.2	3.3		3.4	3.4		225
230													3.1			3.3	3.3		230
235																3.2	3.3		235
240																3.2	3.3		240
245																3.2			245

t_242_06400_00_000

STERLING CRANE

Lifting capacities Forces de levage

TVNZK




ft	128 ft + 23 ft			142 ft + 23 ft			156 ft + 23 ft			171 ft + 23 ft			185 ft + 23 ft			197 ft + 23 ft			ft
	118 ft			118 ft			118 ft			118 ft			118 ft			118 ft			
	0°	22.5°	45°	0°	22.5°	45°	0°	22.5°	45°	0°	22.5°	45°	0°	22.5°	45°	0°	22.5°	45°	
55	7.5			7.2															55
60	7.5			7.2			6.7												60
65	7.4			7.1			6.7			6.2			5.7				4.5		65
70	7.4			7.1			6.6			6.1			5.6				4.5		70
75	7.3			7			6.6			6.1			5.6				4.5		75
80	7.2			7			6.5			6.1			5.6				4.5		80
85	7			6.8			6.5			6			5.6				4.5		85
90	6.8			6.7			6.4			6			5.5				4.4		90
95	6.7			6.6			6.3			6			5.5				4.3		95
100	6.5	5.4		6.4			6.2			5.9			5.5				4.3		100
105	6.4	5.3		6.3	5.2		6.1			5.8			5.4				4.2		105
110	6.2	5.1		6.1	5.1		6	5		5.7	4.9		5.4				4.1		110
115	6	5		6	5		5.8	4.9		5.6	4.8		5.3				4.1		115
120	5.9	4.9		5.8	4.8		5.7	4.8		5.5	4.7		5.2	4.6			4		120
125	5.7	4.7		5.7	4.7		5.6	4.6		5.4	4.6		5.2	4.5		4	4.2		125
130	5.6	4.6	3.8	5.5	4.6	3.8	5.4	4.5		5.3	4.5		5.1	4.4		3.9	4.1		130
135	5.4	4.5	3.8	5.4	4.5	3.8	5.3	4.5		5.2	4.4		5	4.3		3.9	4.1		135
140	5.3	4.4	3.7	5.3	4.4	3.7	5.2	4.4	3.6	5.1	4.3		4.9	4.2		3.8	4		140
145	5.2	4.3	3.7	5.2	4.3	3.6	5.1	4.3	3.6	5	4.2	3.5	4.8	4.1		3.8	4		145
150	5	4.2	3.6	5	4.2	3.6	5	4.2	3.6	4.9	4.1	3.5	4.7	4	3.4	3.7	3.9		150
155	4.9	4.2	3.6	4.9	4.2	3.6	4.9	4.1	3.5	4.8	4.1	3.5	4.7	4	3.4	3.7	3.8		155
160	4.8	4.1	3.5	4.8	4.1	3.5	4.7	4	3.5	4.7	4	3.4	4.6	3.9	3.4	3.7	3.8	3.3	160
165	4.6	4	3.5	4.7	4	3.5	4.6	4	3.4	4.6	3.9	3.4	4.5	3.8	3.3	3.6	3.7	3.3	165
170	4.5	3.9	3.5	4.6	3.9	3.4	4.5	3.9	3.4	4.5	3.9	3.4	4.4	3.8	3.3	3.6	3.7	3.2	170
175	4.4	3.8	3.4	4.5	3.9	3.4	4.4	3.8	3.4	4.4	3.8	3.3	4.3	3.7	3.3	3.5	3.6	3.2	175
180	4.3	3.8	3.4	4.3	3.8	3.4	4.3	3.8	3.4	4.3	3.7	3.3	4.2	3.7	3.3	3.5	3.6	3.2	180
185	4.2	3.7	3.4	4.2	3.7	3.4	4.2	3.7	3.3	4.2	3.7	3.3	4.1	3.6	3.2	3.5	3.5	3.2	185
190	4.1	3.6	3.4	4.2	3.7	3.4	4.1	3.6	3.3	4.1	3.6	3.3	4.1	3.6	3.2	3.5	3.5	3.2	190
195	4	3.6	3.4	4.1	3.6	3.4	4.1	3.6	3.3	4.1	3.6	3.3	4	3.5	3.2	3.5	3.4	3.1	195
200	3.9	3.5	3.4	4	3.6	3.4	4	3.5	3.3	4	3.5	3.3	3.9	3.5	3.2	3.5	3.4	3.1	200
205	3.8	3.5	3.4	3.9	3.5	3.4	3.9	3.5	3.3	3.9	3.5	3.3	3.8	3.4	3.2	3.5	3.3	3.1	205
210	3.7	3.5	3.4	3.8	3.5	3.4	3.8	3.4	3.3	3.8	3.4	3.3	3.8	3.4	3.2	3.5	3.3	3.1	210
215	3.7	3.4	3.4	3.7	3.4	3.4	3.8	3.4	3.3	3.7	3.4	3.3	3.7	3.3	3.2	3.4	3.2	3.1	215
220	3.6	3.4	3.4	3.6	3.4	3.4	3.7	3.4	3.3	3.7	3.3	3.3	3.6	3.3	3.2	3.3	3.2	3.1	220
225	3.5	3.4	3.4	3.5	3.4	3.4	3.6	3.3	3.3	3.6	3.3	3.3	3.5	3.3	3.2	3.1	3.2	3.1	225
230	3.3	3.3	3.4	3.5	3.3	3.4	3.5	3.3	3.3	3.5	3.3	3.3	3.5	3.2	3.2	2.9	3.2	3.1	230
235	3.2	3.3		3.4	3.3	3.4	3.4	3.3	3.3	3.4	3.2	3.3	3.4	3.2	3.2	2.7	3.1	3	235
240	3.1	3.2		3.3	3.3	3.4	3.3	3.2	3.3	3.4	3.2	3.3	3.3	3.2	3.2	2.6	3	3	240
245	2.9	3.1		3.2	3.2		3.2	3.2	3.3	3.3	3.2	3.3	3.2	3.1	3.2	2.4	2.8	3	245
250	2.8	2.9		3.1	3.2		3	3.2	3.3	3.2	3.2	3.3	3	3.1	3.2	2.2	2.7	3	250
255	2.7			3	3.1		2.9	3.1	3.3	3.1	3.1	3.3	2.7	3.1	3.2	2	2.5	2.8	255
260	2.4			2.9	3		2.7	3		3	3.1	3.3	2.3	3	3.2	1.8	2.4	2.7	260
265				2.8	2.9		2.5	2.8		2.8	3	3.2	1.9	3	3.2	1.4	2.2	2.5	265
270				2.7			2.4	2.6		2.7	2.9	3.1	1.6	2.7	3.2		2	2.3	270
275							2.2			2.5	2.8			2.3	2.8			2.1	275
280							2			2.2	2.6			1.9	2.2			1.8	280
285										1.9	2.5			1.6					285
290										1.5									290

t_242_06400_00_000

STERLING CRANE

Lifting capacities Forces de levage

TVNZK



ft	44 ft + 23 ft			58 ft + 23 ft			72 ft + 23 ft			86 ft + 23 ft			100 ft + 23 ft			114 ft + 23 ft			ft
	118 ft			118 ft			118 ft			118 ft			118 ft			118 ft			
	0°	22.5°	45°	0°	22.5°	45°	0°	22.5°	45°	0°	22.5°	45°	0°	22.5°	45°	0°	22.5°	45°	
24	10.1																		24
26	10.5																		26
28	10.8			9.9															28
30	11			10.1															30
32	11			10.3			9.3												32
34	10.9			10.3			9.4			8.9									34
36	10.9			10.3			9.5			9									36
38	10.8			10.2			9.5			9.1									38
40	10.8			10.2			9.5			9									40
45	10.5			10.1			9.4			9			8.4			8.1			45
50	10.2			9.9			9.3			8.9			8.4			8			50
55	9.8			9.6			9.1			8.8			8.3			8			55
60	9.4			9.3			8.9			8.7			8.3			7.9			60
65	9.1			9			8.7			8.5			8.2			7.9			65
70	8.7	7.2		8.6			8.4			8.3			8			7.8			70
75	8.3	6.9		8.3			8.1			8			7.8			7.6			75
80	7.9	6.6		8	6.6		7.9			7.8			7.6			7.4			80
85	7.5	6.3		7.7	6.3		7.6	6.2		7.5	6.2		7.4			7.2			85
90	7.2	6		7.3	6.1		7.3	6		7.3	6		7.1	5.9		7.1	5.8		90
95	6.9	5.8		7	5.8		7	5.8		7.1	5.8		6.9	5.7		6.9	5.7		95
100	6.6	5.5		6.7	5.6		6.8	5.6		6.8	5.6		6.7	5.5		6.7	5.5		100
105	6.2	5.3	4.4	6.4	5.4		6.5	5.4		6.6	5.4		6.5	5.4		6.5	5.3		105
110	6	5.1	4.3	6.2	5.2	4.3	6.3	5.2	4.3	6.4	5.3		6.3	5.2		6.3	5.2		110
115	5.7	4.9	4.2	5.9	5	4.2	6	5.1	4.2	6.2	5.1		6.1	5.1		6.1	5.1		115
120	5.4	4.8	4.1	5.7	4.9	4.1	5.8	4.9	4.1	5.9	4.9	4.1	6	4.9		6	4.9		120
125	5.2	4.6	4	5.5	4.7	4	5.6	4.7	4	5.7	4.8	4	5.8	4.8	4	5.8	4.8	3.9	125
130	5	4.4	3.9	5.3	4.6	3.9	5.4	4.6	3.9	5.5	4.6	3.9	5.6	4.7	3.9	5.6	4.7	3.9	130
135	4.8	4.3	3.8	5	4.4	3.9	5.2	4.5	3.8	5.3	4.5	3.8	5.4	4.5	3.8	5.5	4.5	3.8	135
140	4.6	4.2	3.8	4.9	4.3	3.8	5	4.3	3.8	5.2	4.4	3.8	5.2	4.4	3.8	5.3	4.4	3.7	140
145	4.4	4	3.7	4.7	4.2	3.7	4.8	4.2	3.7	5	4.3	3.7	5.1	4.3	3.7	5.1	4.3	3.7	145
150	4.2	3.9	3.7	4.5	4	3.7	4.7	4.1	3.7	4.9	4.2	3.7	4.9	4.2	3.7	5	4.2	3.6	150
155	4	3.8	3.7	4.3	3.9	3.7	4.5	4	3.6	4.7	4.1	3.6	4.8	4.1	3.6	4.9	4.2	3.6	155
160	3.8	3.7	3.7	4.2	3.9	3.6	4.4	3.9	3.6	4.6	4	3.6	4.6	4	3.6	4.7	4.1	3.6	160
165	3.7	3.7	3.7	4	3.8	3.6	4.2	3.9	3.6	4.4	3.9	3.6	4.5	3.9	3.5	4.6	4	3.5	165
170	3.5	3.7		3.9	3.7	3.6	4.1	3.8	3.6	4.3	3.8	3.6	4.4	3.9	3.5	4.5	3.9	3.5	170
175	3.4	3.7		3.7	3.7		4	3.7	3.6	4.1	3.8	3.6	4.3	3.8	3.5	4.4	3.8	3.5	175
180				3.6	3.6		3.8	3.6	3.6	4.1	3.7	3.6	4.1	3.7	3.5	4.3	3.8	3.5	180
185				3.4	3.6		3.7	3.6	3.6	3.9	3.6	3.6	4	3.7	3.5	4.1	3.7	3.5	185
190				3.3			3.6	3.6		3.8	3.6	3.6	3.9	3.6	3.5	4	3.6	3.5	190
195							3.5	3.6		3.7	3.6	3.6	3.8	3.6	3.5	3.9	3.6	3.5	195
200							3.4	3.5		3.6	3.5		3.8	3.5	3.5	3.8	3.5	3.5	200
205							3.3			3.5	3.5		3.7	3.5	3.5	3.8	3.5	3.5	205
210										3.4	3.5		3.5	3.5		3.7	3.5	3.5	210
215										3.3	3.5		3.5	3.4		3.6	3.4	3.5	215
220													3.4	3.4		3.5	3.4		220
225													3.2	3.3		3.4	3.4		225
230													3.1			3.3	3.3		230
235																3.2	3.3		235
240																3.2	3.3		240
245																3.2			245

t_242_06410_00_000

STERLING CRANE

Lifting capacities Forces de levage

TVNZK



ft	128 ft + 23 ft			142 ft + 23 ft			156 ft + 23 ft			171 ft + 23 ft			185 ft + 23 ft			197 ft + 23 ft			ft
	118 ft			118 ft			118 ft			118 ft			118 ft			118 ft			
	0°	22.5°	45°	0°	22.5°	45°	0°	22.5°	45°	0°	22.5°	45°	0°	22.5°	45°	0°	22.5°	45°	
55	7.5			7.2															55
60	7.5			7.2			6.7												60
65	7.4			7.1			6.7			6.2			5.7						65
70	7.4			7.1			6.6			6.1			5.6			4.5			70
75	7.3			7			6.6			6.1			5.6			4.5			75
80	7.2			7			6.5			6.1			5.6			4.5			80
85	7			6.8			6.5			6			5.6			4.5			85
90	6.8			6.7			6.4			6			5.5			4.4			90
95	6.7			6.6			6.3			6			5.5			4.3			95
100	6.5	5.4		6.4			6.2			5.9			5.5			4.3			100
105	6.4	5.3		6.3	5.2		6.1			5.8			5.4			4.2			105
110	6.2	5.1		6.1	5.1		6	5		5.7	4.9		5.4			4.1			110
115	6	5		6	5		5.8	4.9		5.6	4.8		5.3			4.1			115
120	5.9	4.9		5.8	4.8		5.7	4.8		5.5	4.7		5.2	4.6		4			120
125	5.7	4.7		5.7	4.7		5.6	4.6		5.4	4.6		5.2	4.5		4	4.2		125
130	5.6	4.6	3.8	5.5	4.6	3.8	5.4	4.5		5.3	4.5		5.1	4.4		3.9	4.1		130
135	5.4	4.5	3.8	5.4	4.5	3.8	5.3	4.5		5.2	4.4		5	4.3		3.9	4.1		135
140	5.3	4.4	3.7	5.3	4.4	3.7	5.2	4.4	3.6	5.1	4.3		4.9	4.2		3.8	4		140
145	5.2	4.3	3.7	5.2	4.3	3.6	5.1	4.3	3.6	5	4.2	3.5	4.8	4.1		3.8	4		145
150	5	4.2	3.6	5	4.2	3.6	5	4.2	3.6	4.9	4.1	3.5	4.7	4	3.4	3.7	3.9		150
155	4.9	4.2	3.6	4.9	4.2	3.6	4.9	4.1	3.5	4.8	4.1	3.5	4.7	4	3.4	3.7	3.8		155
160	4.8	4.1	3.5	4.8	4.1	3.5	4.7	4	3.5	4.7	4	3.4	4.6	3.9	3.4	3.7	3.8	3.3	160
165	4.6	4	3.5	4.7	4	3.5	4.6	4	3.4	4.6	3.9	3.4	4.5	3.8	3.3	3.6	3.7	3.3	165
170	4.5	3.9	3.5	4.6	3.9	3.4	4.5	3.9	3.4	4.5	3.9	3.4	4.4	3.8	3.3	3.6	3.7	3.2	170
175	4.4	3.8	3.4	4.5	3.9	3.4	4.4	3.8	3.4	4.4	3.8	3.3	4.3	3.7	3.3	3.5	3.6	3.2	175
180	4.3	3.8	3.4	4.3	3.8	3.4	4.3	3.8	3.4	4.3	3.7	3.3	4.2	3.7	3.3	3.5	3.6	3.2	180
185	4.2	3.7	3.4	4.2	3.7	3.4	4.2	3.7	3.3	4.2	3.7	3.3	4.1	3.6	3.2	3.5	3.5	3.2	185
190	4.1	3.6	3.4	4.2	3.7	3.4	4.1	3.6	3.3	4.1	3.6	3.3	4.1	3.6	3.2	3.5	3.5	3.2	190
195	4	3.6	3.4	4.1	3.6	3.4	4.1	3.6	3.3	4.1	3.6	3.3	4	3.5	3.2	3.5	3.4	3.1	195
200	3.9	3.5	3.4	4	3.6	3.4	4	3.5	3.3	4	3.5	3.3	3.9	3.5	3.2	3.5	3.4	3.1	200
205	3.8	3.5	3.4	3.9	3.5	3.4	3.9	3.5	3.3	3.9	3.5	3.3	3.7	3.4	3.2	3.2	3.3	3.1	205
210	3.7	3.5	3.4	3.8	3.5	3.4	3.8	3.4	3.3	3.8	3.4	3.3	3.5	3.4	3.2	2.9	3.3	3.1	210
215	3.7	3.4	3.4	3.7	3.4	3.4	3.8	3.4	3.3	3.7	3.4	3.3	3	3.3	3.2	2.5	3.2	3.1	215
220	3.6	3.4	3.4	3.6	3.4	3.4	3.7	3.4	3.3	3.7	3.3	3.3	2.6	3.3	3.2	2	3.2	3.1	220
225	3.5	3.4	3.4	3.5	3.4	3.4	3.6	3.3	3.3	3.4	3.3	3.3	2.2	3.3	3.2	1.5	3.2	3.1	225
230	3.3	3.3	3.4	3.5	3.3	3.4	3.5	3.3	3.3	3	3.3	3.3	1.7	3.2	3.2		3.1	3.1	230
235	3.2	3.3		3.4	3.3	3.4	3.4	3.3	3.3	2.6	3.2	3.3		3	3.2		2.6	3	235
240	3.1	3.2		3.3	3.3	3.4	3.2	3.2	3.3	2.2	3.2	3.3		2.6	3.2		2.2	3	240
245	2.9	3.1		3.2	3.2		2.8	3.2	3.3	1.9	3	3.3		2.2	3.1		1.8	2.8	245
250	2.8	2.9		3.1	3.2		2.5	3.2	3.3	1.5	2.7	3.3		1.8	2.7			2.4	250
255	2.7			3	3.1		2.1	3	3.2		2.3	2.8			2.2			1.9	255
260	2.4			2.8	3		1.8	2.6			1.9	2.3			1.7				260
265				2.6	2.9		1.5	2.2			1.5	1.9							265
270				2.3				1.9											270

t_242_06410_00_000