

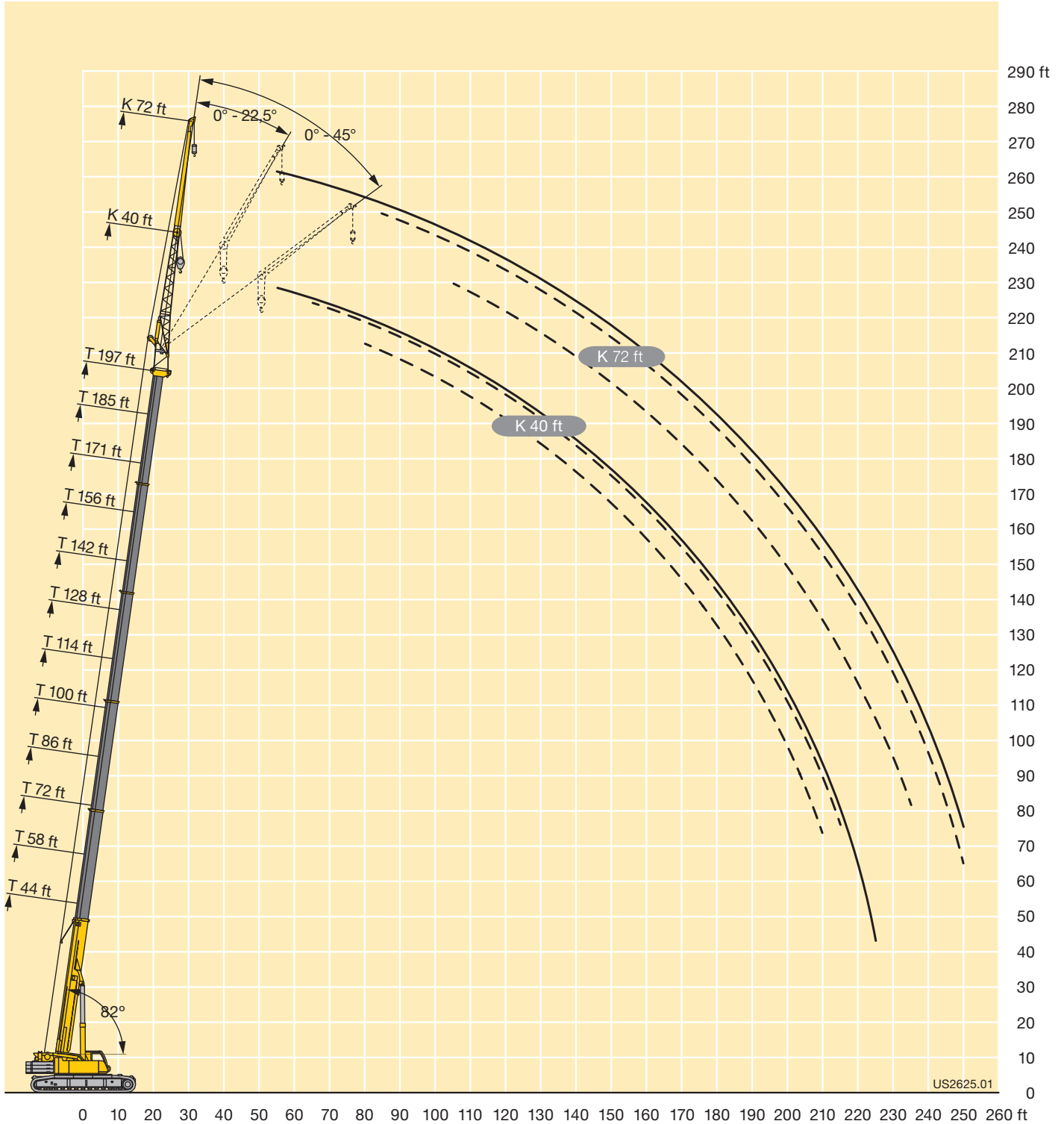


LIFTING CHARTS - Crawler Cranes

LIEBHERR MODEL LTR 1220 - 250 TON CAPACITY

Lifting heights

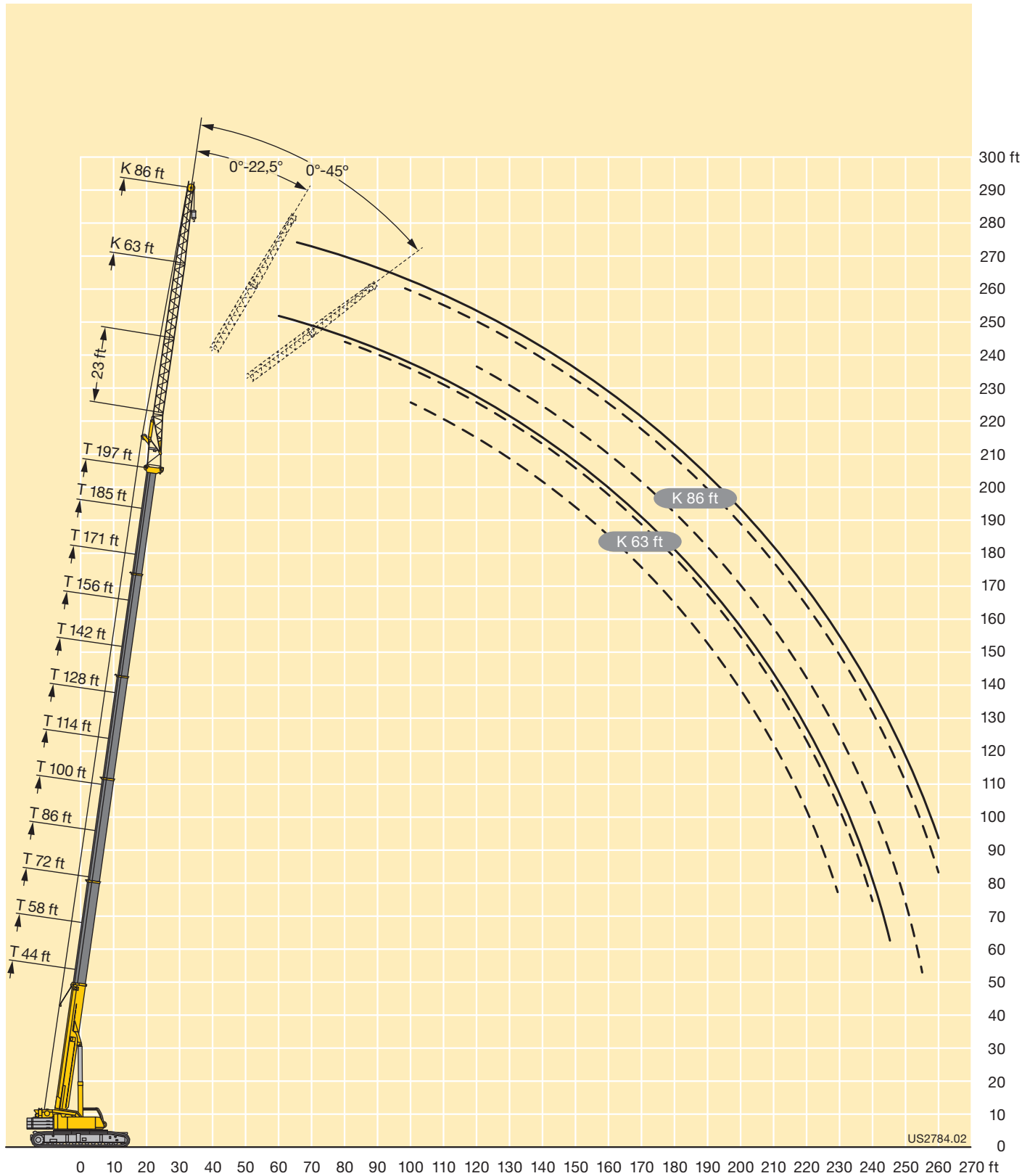
TNZK



STERLING CRANE

Lifting heights

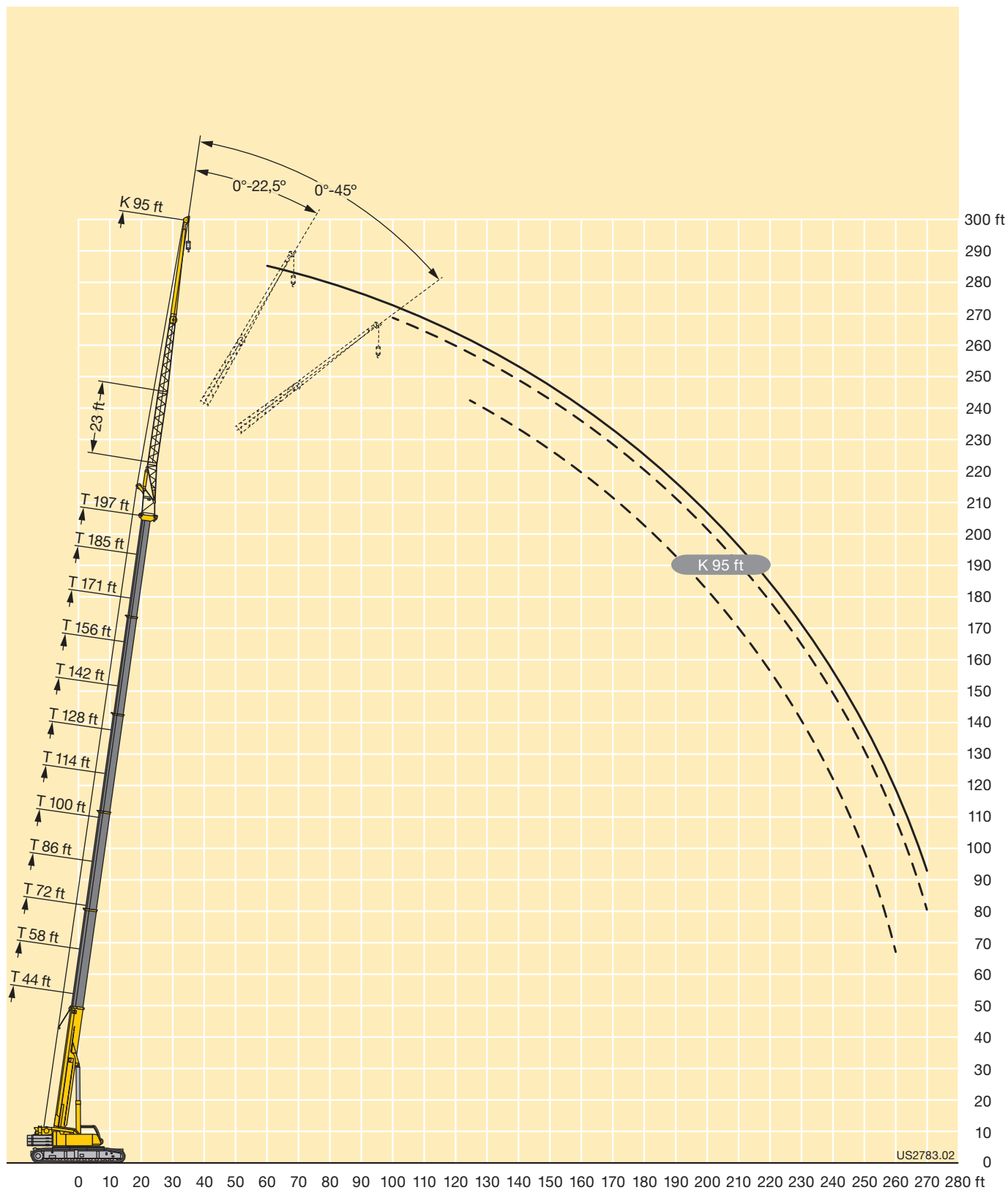
TNZK



STERLING CRANE

Lifting heights

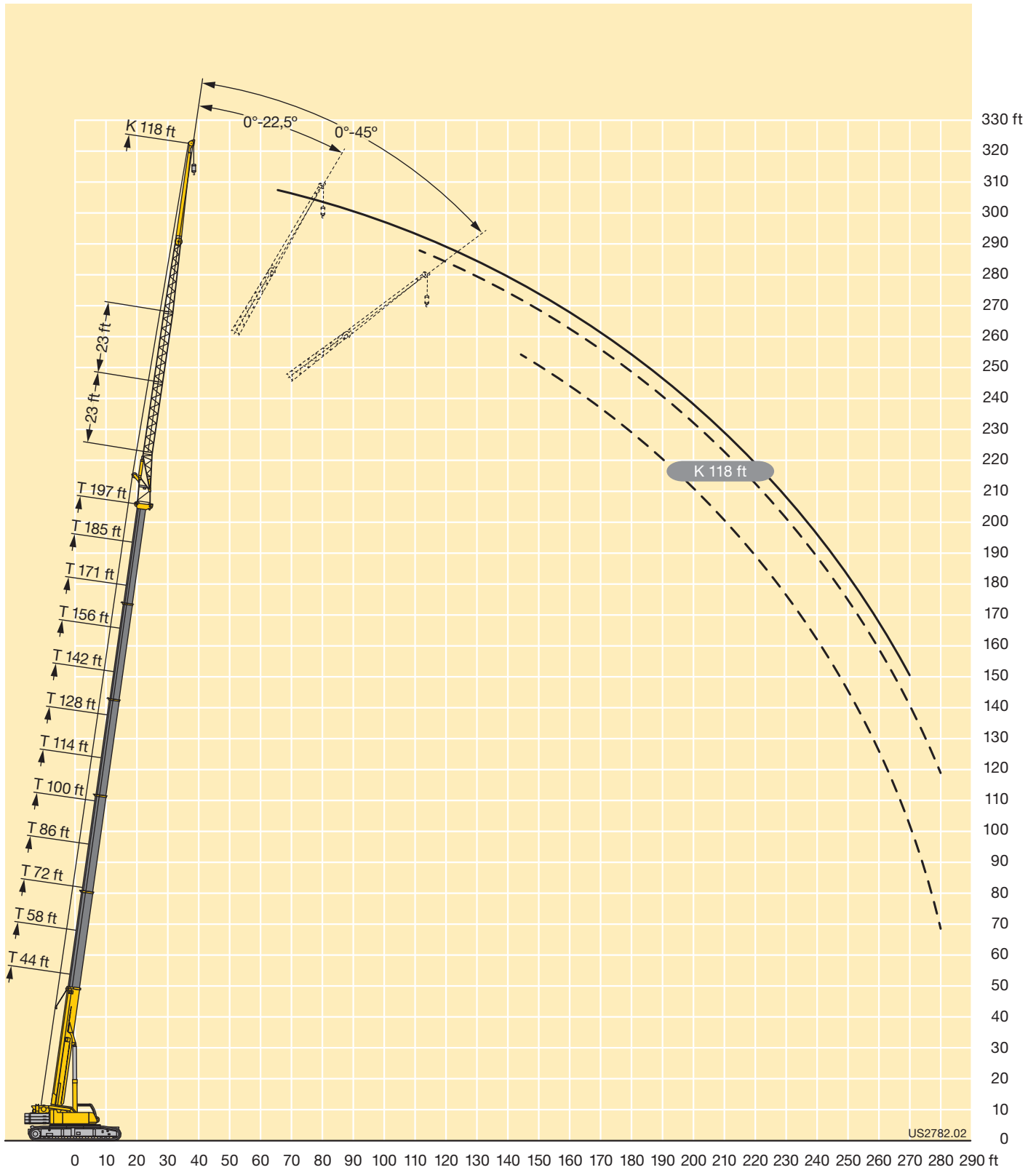
TNZK



STERLING CRANE

Lifting heights

TNZK



STERLING CRANE

Lifting capacities

TNZZ

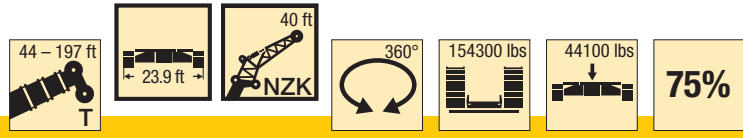
ft	44 ft			58 ft			72 ft			86 ft			100 ft			114 ft			ft
	40 ft			40 ft			40 ft			40 ft			40 ft			40 ft			
	0°	22.5°	45°	0°	22.5°	45°	0°	22.5°	45°	0°	22.5°	45°	0°	22.5°	45°	0°	22.5°	45°	
10	46.1																		10
11	46.1			46.1															11
12	46.1			46.1															12
13	46.1			46.1			46.1												13
14	46.1			46.1			46.1												14
15	46.1			46.1			46.1												15
16	46.1			46.1			46.1			46.1									16
17	46.1			46.1			46.1			46.1									17
18	46.1			46.1			46.1			46.1									18
19	46.1			46.1			46.1			46.1			46.1						19
20	46.1			46.1			46.1			46.1			46.1						20
22	46.1			46.1			46.1			46.1			46.1						22
24	46.1	36.8		46.1			46.1			46.1			46.1			46.1			24
26	46.1	35		46.1	36.6		46.1			46.1			46.1			46.1			26
28	46.1	33.3		46.1	35.1		46.1			46.1			46.1			46.1			28
30	45.7	31.8		46.1	33.7		46.1	34.5		46.1			46.1			46.1			30
32	44.4	30.5		46.1	32.4		46.1	33.3		46.1			46.1			46.1			32
34	42.9	29.3	23.2	46.1	31.2		46.1	32.2		46.1	33.2		46			46.1	45.8		34
36	41.4	28.2	23.2	45.9	30.1	23.2	46	31.2		46.1	32.2		45.3	32.6		45.3			36
38	39.5	27.2	23.1	44.7	29.1	23.2	45.8	30.2		45.6	31.3		44.5	31.7		44.5			38
40	37.3	26.2	22.7	43	28.2	23.2	44.5	29.3	23.2	45.1	30.4		43.2	30.9		43.5	31.5		40
45	32.5	24.1	21.5	38.5	26	22.3	40.7	27.3	22.7	43.2	28.4		39.6	29		40.3	29.7		45
50	28.7	22.3	20.5	34.3	24.3	21.3	37.2	25.6	21.8	39.9	26.7	22.3	36.3	27.4	22.6	37.4	28.1		50
55	25.6	20.8	19.8	30.8	22.7	20.5	33.9	24.1	21.1	36.9	25.3	21.6	33.5	26	21.8	34.8	26.6	22.1	55
60	23.2	19.5	19.2	27.8	21.4	19.9	31.2	22.8	20.4	34.2	23.9	20.9	31	24.7	21.2	32.4	25.4	21.5	60
65	21	18.5	19	25.3	20.2	19.4	28.8	21.6	19.9	31.8	22.8	20.4	28.9	23.5	20.7	30.3	24.3	21	65
70	19.2	17.6	10.4	23.3	19.2	19.1	26.6	20.6	19.5	29.5	21.8	19.9	26.8	22.5	20.2	28.5	23.3	20.5	70
75	17.6	17.4		21.4	18.4	19	24.7	19.7	19.1	27.5	20.9	19.5	25.1	21.7	19.8	26.8	22.4	20.1	75
80				19.8	17.7		22.9	18.9	19	25.7	20.1	19.2	23.4	20.8	19.5	25.2	21.6	19.8	80
85				18.5	17.3		21.4	18.3	18.9	24.2	19.3	19.1	22	20.1	19.3	23.8	20.9	19.5	85
90				17.3			20.1	17.7	18.9	22.7	18.7	19	20.6	19.4	19	22.4	20.2	19.3	90
95							18.9	17.4		21.4	18.2	19	19.4	18.8	18.7	21.2	19.7	19.1	95
100							17.9	17.3		20.2	17.7	19	18.3	18	18.1	20.1	19	18.9	100
105										19.2	17.4	19	17.3	17.1	17.3	19.1	18.4	18.3	105
110										18.3	17.3		16.3	16.2	16.5	18.1	17.7	17.6	110
115										17.5			15.5	15.4	15.7	17.3	16.9	17	115
120													14.7	14.7		16.5	16.2	16.4	120
125													14.1	14.1		15.7	15.6	15.8	125
130													13.5			15.1	15	15.2	130
135																14.5	14.4		135
140																14			140
145																13.5			145

t_242_01000_00_000

STERLING CRANE

Lifting capacities

TNZK



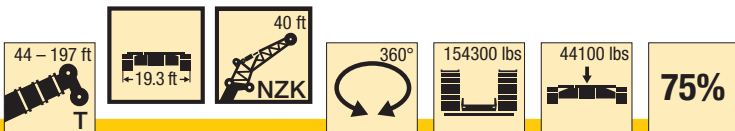
ft	128 ft			142 ft			156 ft			171 ft			185 ft			197 ft			ft
	40 ft			40 ft			40 ft			40 ft			40 ft			40 ft			
	0°	22.5°	45°	0°	22.5°	45°	0°	22.5°	45°	0°	22.5°	45°	0°	22.5°	45°	0°	22.5°	45°	
30	42.6			45.3															30
32	42.4			45.1															32
34	42.2			44.9															34
36	41.9			44.6			40.4												36
38	41.7			44.3			40.2												38
40	41.2			44			40			34.7									40
45	38.8			43			39.3			34.3									45
50	36	28.3		41.8	30.5		38.6			33.9			28.5						50
55	33.6	27	22.2	40.6	29		37.8	29.3		33.5			28			24			55
60	31.4	25.7	21.7	39.4	27.6	22.3	37	27.9	22.6	32.9	27.6		27.6			23.6			60
65	29.3	24.7	21.1	37.8	26.4	21.8	36.1	26.8	22	32.1	26.5		27.3			23.2	22.2		65
70	27.4	23.7	20.7	36	25.3	21.3	34.9	25.7	21.5	31	25.5	21.5	26.8	24.8		22.9	22		70
75	25.7	22.9	20.3	34.1	24.4	20.9	33.6	24.8	21.1	29.7	24.5	21	25.8	24	20.9	22.5	21.6		75
80	24.2	22.1	19.9	32.2	23.5	20.5	32.1	23.9	20.7	28.2	23.7	20.6	24.8	23.2	20.6	21.6	20.7	19.7	80
85	22.7	21.3	19.7	30.4	22.8	20.2	30.5	23.1	20.4	26.9	23	20.3	23.7	22.5	20.2	20.6	20	19	85
90	21.4	20.5	19.4	28.8	22	19.9	29	22.4	20.1	25.7	22.3	20.1	22.7	21.7	20	19.7	19.2	18.3	90
95	20.2	19.7	19.1	27.2	21.4	19.6	27.6	21.8	19.8	24.5	21.7	19.8	21.7	20.9	19.7	18.9	18.5	17.7	95
100	19.1	18.8	18.8	25.8	20.8	19.4	26.4	21.2	19.6	23.3	21.2	19.6	20.8	20.2	19.3	18.1	17.8	17.1	100
105	18.1	17.8	17.9	24.5	20.2	19.2	25.1	20.6	19.4	22.3	20.6	19.4	19.9	19.4	18.7	17.2	17.1	16.5	105
110	17.1	16.9	17.1	23.2	19.7	19.1	23.9	20.1	19.2	21.3	20.1	19.3	19	18.7	18.1	16.5	16.4	16	110
115	16.2	16.1	16.3	22.1	19.3	19	22.9	19.7	19.1	20.3	19.5	19	18.2	18	17.5	15.7	15.8	15.5	115
120	15.4	15.3	15.5	21	18.8	18.9	21.8	19.2	19	19.4	18.9	18.6	17.5	17.3	16.9	15	15.1	14.9	120
125	14.6	14.6	14.8	20	18.5	18.9	20.8	18.8	19	18.6	18.3	18.1	16.7	16.6	16.4	14.4	14.4	14.4	125
130	13.9	13.9	14.1	19.1	18.1	18.8	19.8	18.5	18.9	17.8	17.7	17.6	16	15.9	15.8	13.7	13.8	13.8	130
135	13.2	13.3	13.5	18.2	17.8	18.3	18.3	18.2	18.6	17	17	16.9	15.4	15.3	15.2	13.1	13.2	13.3	135
140	12.5	12.6	12.9	17.4	17.4	17.6	16.8	17.7	18.2	16.3	16.3	16.3	14.7	14.7	14.7	12.5	12.6	12.7	140
145	12	12.1		16.6	16.7	16.9	15.5	16.5	17.3	15.6	15.6	15.7	14.1	14.1	14.1	11.9	12.1	12.2	145
150	11.4	11.5		15.7	16	16.2	14.3	15.2	15.8	14.5	15	15.1	13.6	13.5	13.6	11.4	11.5	11.7	150
155	11			14.6	15.2	15.4	13.6	14	14.5	13.4	14.2	14.5	13	13	13.1	10.9	11	11.2	155
160	9.9			13.5	14		13	13.1	13.3	12.3	13.2	13.7	12.5	12.5	12.6	10.4	10.5	10.7	160
165				12.6	12.9		12.4	12.6	12.7	11.4	12.1	12.6	11.8	12.1	12.1	10	10.1	10.3	165
170				10.9	11.6		11.7	12	12.2	10.9	11.1	11.5	10.9	11.5	11.7	9.5	9.7	9.8	170
175				5.4			10.9	11.3		10.5	10.6	10.7	10	10.7	11.2	9.2	9.3	9.4	175
180							10	9.3		10	10.2	10.3	9.3	9.8	10.3	8.8	8.9	9.1	180
185							8.5	9		9.7	9.8		8.6	9.1	9.4	8.4	8.6	8.7	185
190										9.1	9.4		8	8.4	8.7	7.8	8.2	8.4	190
195										8.3			7.4	7.8	8	7.2	7.7	8	195
200										5.4			6.9	7.2	7.3	6.6	7.1	7.3	200
205													6.4	6.6	6.6	6.1	6.5	6.7	205
210													5.3	6		5.6	6	6	210
215													2.2			5.1	5.4		215
220																4.6			220
225																2.5			225

t_242_01000_00_000

STERLING CRANE

Lifting capacities

TNZZ



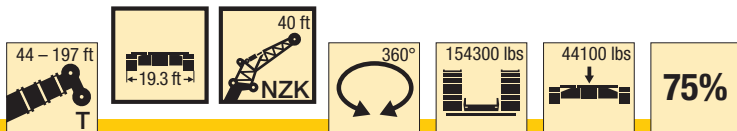
ft	44 ft			58 ft			72 ft			86 ft			100 ft			114 ft			ft
	40 ft			40 ft			40 ft			40 ft			40 ft			40 ft			
	0°	22.5°	45°	0°	22.5°	45°	0°	22.5°	45°	0°	22.5°	45°	0°	22.5°	45°	0°	22.5°	45°	
10	46.1																		10
11	46.1			46.1															11
12	46.1			46.1															12
13	46.1			46.1			46.1												13
14	46.1			46.1			46.1												14
15	46.1			46.1			46.1												15
16	46.1			46.1			46.1			46.1									16
17	46.1			46.1			46.1			46.1									17
18	46.1			46.1			46.1			46.1									18
19	46.1			46.1			46.1			46.1			46.1						19
20	46.1			46.1			46.1			46.1			46.1						20
22	46.1			46.1			46.1			46.1			46.1						22
24	46.1	36.8		46.1			46.1			46.1			46.1			46.1			24
26	46.1	35		46.1	36.6		46.1			46.1			46.1			46.1			26
28	46.1	33.3		46.1	35.1		46.1			46.1			46.1			46.1			28
30	45.7	31.8		46.1	33.7		46.1	34.5		46.1			46.1			46.1			30
32	44.4	30.5		46.1	32.4		46.1	33.3		46.1			46.1			46.1			32
34	42.9	29.3	23.2	46.1	31.2		46.1	32.2		46.1	33.2		46			46.1			34
36	41.4	28.2	23.2	45.9	30.1	23.2	46	31.2		46.1	32.2		45.3	32.6		45.3			36
38	39.5	27.2	23.1	44.7	29.1	23.2	45.8	30.2		45.6	31.3		44.5	31.7		44.5			38
40	37.3	26.2	22.7	43	28.2	23.2	44.5	29.3	23.2	45.1	30.4		43.2	30.9		43.5	31.5		40
45	32.5	24.1	21.5	38.5	26	22.3	40.7	27.3	22.7	43.2	28.4		39.6	29		40.3	29.7		45
50	28.7	22.3	20.5	34.3	24.3	21.3	37.2	25.6	21.8	39.9	26.7	22.3	36.3	27.4	22.6	37.4	28.1		50
55	25.6	20.8	19.8	30.8	22.7	20.5	33.9	24.1	21.1	36.9	25.3	21.6	33.5	26	21.8	34.8	26.6	22.1	55
60	23.2	19.5	19.2	27.8	21.4	19.9	31.2	22.8	20.4	34.2	23.9	20.9	31	24.7	21.2	32.4	25.4	21.5	60
65	21	18.5	19	25.3	20.2	19.4	28.8	21.6	19.9	31.8	22.8	20.4	28.9	23.5	20.7	30.3	24.3	21	65
70	19.2	17.6	10.4	23.3	19.2	19.1	26.6	20.6	19.5	29.5	21.8	19.9	26.8	22.5	20.2	28.5	23.3	20.5	70
75	17.6	17.4		21.4	18.4	19	24.7	19.7	19.1	27.5	20.9	19.5	25.1	21.7	19.8	26.8	22.4	20.1	75
80				19.8	17.7		22.9	18.9	19	25.7	20.1	19.2	23.4	20.8	19.5	25.2	21.6	19.8	80
85				18.5	17.3		21.4	18.3	18.9	24.2	19.3	19.1	22	20.1	19.3	23.8	20.9	19.5	85
90				17.3			20.1	17.7	18.9	22.7	18.7	19	20.6	19.4	19	22.4	20.2	19.3	90
95							18.9	17.4		21.4	18.2	19	19.4	18.8	18.7	21.2	19.7	19.1	95
100							17.9	17.3		20.2	17.7	19	18.3	18	18.1	20.1	19	18.9	100
105										19.2	17.4	19	17.3	17.1	17.3	19.1	18.4	18.3	105
110										18.3	17.3		16.3	16.2	16.5	18.1	17.7	17.6	110
115										17.5			15.5	15.4	15.7	17.3	16.9	17	115
120													14.7	14.7		16.5	16.2	16.4	120
125													14.1	14.1		15.7	15.6	15.8	125
130													13.5			15.1	15	15.2	130
135																14.5	14.4		135
140																14			140
145																13.5			145

t_242_01010_00_000

STERLING CRANE

Lifting capacities

TNZK



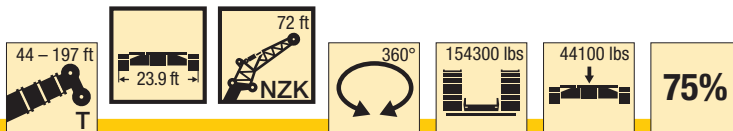
ft	128 ft			142 ft			156 ft			171 ft			185 ft			197 ft			ft
	40 ft			40 ft			40 ft			40 ft			40 ft			40 ft			
	0°	22.5°	45°	0°	22.5°	45°	0°	22.5°	45°	0°	22.5°	45°	0°	22.5°	45°	0°	22.5°	45°	
30	42.6			45.3															30
32	42.4			45.1															32
34	42.2			44.9															34
36	41.9			44.6			40.4												36
38	41.7			44.3			40.2												38
40	41.2			44			40			34.7									40
45	38.8			43			39.3			34.3									45
50	36	28.3		41.8	30.5		38.6			33.9			28.5						50
55	33.6	27	22.2	40.6	29		37.8	29.3		33.5			28			24			55
60	31.4	25.7	21.7	39.4	27.6	22.3	37	27.9	22.6	32.9	27.6		27.6			23.6			60
65	29.3	24.7	21.1	37.8	26.4	21.8	36.1	26.8	22	32.1	26.5		27.3			23.2	22.2		65
70	27.4	23.7	20.7	36	25.3	21.3	34.9	25.7	21.5	31	25.5	21.5	26.8	24.8		22.9	22		70
75	25.7	22.9	20.3	34.1	24.4	20.9	33.6	24.8	21.1	29.7	24.5	21	25.8	24	20.9	22.5	21.6		75
80	24.2	22.1	19.9	32.2	23.5	20.5	32.1	23.9	20.7	28.2	23.7	20.6	24.8	23.2	20.6	21.6	20.7	19.7	80
85	22.7	21.3	19.7	30.4	22.8	20.2	30.5	23.1	20.4	26.9	23	20.3	23.7	22.5	20.2	20.6	20	19	85
90	21.4	20.5	19.4	28.8	22	19.9	29	22.4	20.1	25.7	22.3	20.1	22.7	21.7	20	19.7	19.2	18.3	90
95	20.2	19.7	19.1	27.2	21.4	19.6	27.3	21.8	19.8	24.5	21.7	19.8	21.7	20.9	19.7	18.9	18.5	17.7	95
100	19.1	18.8	18.8	25.8	20.8	19.4	25.4	21.2	19.6	23.3	21.2	19.6	20.8	20.2	19.3	18.1	17.8	17.1	100
105	18.1	17.8	17.9	24.5	20.2	19.2	23.3	20.6	19.4	22.3	20.6	19.4	19.9	19.4	18.7	17.2	17.1	16.5	105
110	17.1	16.9	17.1	22.6	19.7	19.1	21.3	20.1	19.2	21.2	20.1	19.3	19	18.7	18.1	16.5	16.4	16	110
115	16.2	16.1	16.3	20.8	19.3	19	19.9	19.7	19.1	19.6	19.5	19	18.2	18	17.5	15.7	15.8	15.5	115
120	15.4	15.3	15.5	19.1	18.8	18.9	18.9	19	19	18	18.9	18.6	17.5	17.3	16.9	15	15.1	14.9	120
125	14.6	14.6	14.8	17.5	18.4	18.9	17.7	17.9	18.7	16.4	17.8	18.1	16.7	16.6	16.4	14.4	14.4	14.4	125
130	13.9	13.9	14.1	16.1	17.2	18	16.3	17.1	17.2	15.7	16.4	17.3	15.5	15.9	15.8	13.7	13.8	13.8	130
135	13.2	13.3	13.5	14.8	15.8	16.5	15	16.1	16.5	14.9	15	16	14.2	15.3	15.2	13.1	13.2	13.3	135
140	12.5	12.6	12.9	13.8	14.5	15.1	13.8	14.8	15.6	14.2	14.3	14.6	13	14.2	14.7	12.4	12.6	12.7	140
145	12	12.1		13.2	13.3	13.8	12.7	13.6	14.3	13.1	13.7	13.8	11.9	13	13.9	11.6	12.1	12.2	145
150	11.4	11.5		12.7	12.7	12.9	12.1	12.5	13.1	12.1	13	13.2	10.8	11.9	12.8	10.6	11.5	11.7	150
155	11			12.2	12.2	12.4	11.5	11.7	11.9	11.1	12	12.5	9.9	10.9	11.7	9.7	10.7	11.2	155
160	9.9			11.7	11.8		10.9	11.1	11.3	10.2	11	11.6	8.9	9.9	10.6	8.8	9.7	10.6	160
165				11.3	11.4		10.3	10.6	10.8	9.4	10.1	10.5	8.1	9	9.6	7.9	8.8	9.6	165
170				10.8	11		9.6	10	10.2	8.6	9.2	9.6	7.3	8.1	8.7	7.1	8	8.7	170
175				5.4			8.9	9.3		7.9	8.4	8.7	6.6	7.3	7.8	6.4	7.2	7.8	175
180							8.2	8.5		7.2	7.7	7.9	5.9	6.6	7	5.7	6.4	7	180
185							7.6	7.8		6.5	7		5.3	5.8	6.2	5	5.7	6.2	185
190										6	6.3		4.7	5.2	5.4	4.4	5	5.5	190
195										5.4			4.1	4.5	4.7	3.9	4.4	4.8	195
200										4.9			3.6	3.9	4	3.3	3.8	4.1	200
205													3.1	3.4	3.3	2.8	3.2	3.4	205
210													2.6	2.8		2.3	2.7	2.8	210
215													2.1			1.9	2.2		215
220																1.4			220

t_242_01010_00_000

STERLING CRANE

Lifting capacities

TNZK



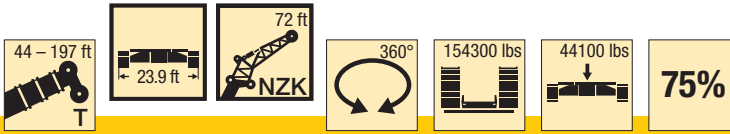
ft	44 ft			58 ft			72 ft			86 ft			100 ft			114 ft			ft
	72 ft			72 ft			72 ft			72 ft			72 ft			72 ft			
	0°	22.5°	45°	0°	22.5°	45°	0°	22.5°	45°	0°	22.5°	45°	0°	22.5°	45°	0°	22.5°	45°	
12	21.8																		12
13	22																		13
14	22.2																		14
15	22.2																		15
16	22.2			21.5															16
17	22.1			21.5															17
18	22.1			21.5															18
19	22			21.5			20.5												19
20	21.9			21.4			20.5												20
22	21.7			21.3			20.5		19.9										22
24	21.6			21.2			20.4		19.9										24
26	21.3			21			20.3		19.8				19						26
28	21.1			20.8			20.2		19.7				18.9						28
30	20.9			20.7			20		19.6				18.9			18.3			30
32	20.6			20.5			19.9		19.5				18.8			18.3			32
34	20.3			20.3			19.7		19.4				18.7			18.2			34
36	20			20			19.5		19.2				18.6			18.1			36
38	19.7			19.7			19.3		19.1				18.4			18			38
40	19.3	16.6		19.5			19.1		18.9				18.3			17.9			40
45	18.4	15.7		18.7	15.8		18.5		18.4				17.9			17.5			45
50	17.5	14.9		17.9	15.1		17.9		17.8				17.4			17.2			50
55	16.5	14.1		17.2	14.4		17.3	14.4	17.3	14.4			17			16.8			55
60	15.6	13.3	11.3	16.4	13.7		16.6	13.8	16.8	13.9			16.6	13.8		16.4	13.8		60
65	14.7	12.7	10.9	15.6	13.1	11	16	13.3	11	16.2	13.4		16.1	13.4		16	13.3		65
70	13.9	12.1	10.5	14.8	12.5	10.7	15.3	12.7	10.7	15.7	12.9		15.6	12.9		15.6	13		70
75	13.1	11.6	10.3	14.1	12	10.4	14.7	12.3	10.4	15.1	12.5	10.5	15.2	12.5	10.4	15.2	12.6		75
80	12.4	11.1	10	13.4	11.6	10.1	14	11.9	10.2	14.6	12.1	10.2	14.7	12.2	10.2	14.8	12.2	10.2	80
85	11.6	10.7	9.8	12.7	11.2	9.9	13.4	11.5	10	14	11.7	10.1	14.2	11.8	10.1	14.4	11.9	10	85
90	10.8	10.3	9.7	12.1	10.8	9.8	12.8	11.1	9.8	13.4	11.4	9.9	13.7	11.5	9.9	14	11.6	9.9	90
95	10.1	10	9.7	11.5	10.4	9.7	12.3	10.8	9.7	12.9	11.1	9.8	13.3	11.2	9.8	13.6	11.3	9.8	95
100	9.4	9.8	9.7	10.9	10.2	9.7	11.8	10.5	9.6	12.5	10.8	9.7	12.8	10.9	9.7	13.1	11.1	9.7	100
105	8.9	9.7		10.2	9.9	9.7	11.3	10.2	9.6	12	10.5	9.6	12.4	10.6	9.6	12.7	10.8	9.6	105
110				9.6	9.8	9.7	10.8	10	9.6	11.6	10.3	9.6	12	10.4	9.5	12.4	10.6	9.5	110
115				9.2	9.7		10.2	9.8	9.6	11.1	10	9.6	11.6	10.2	9.5	12	10.4	9.5	115
120				8.8	9.7		9.7	9.7	9.6	10.7	9.9	9.6	11.2	10	9.5	11.6	10.2	9.4	120
125							9.3	9.6	9.6	10.3	9.7	9.6	10.9	9.9	9.5	11.3	10	9.4	125
130							9	9.6		9.8	9.6	9.6	10.5	9.7	9.5	11	9.8	9.4	130
135							8.6	9.6		9.4	9.6	9.6	10.1	9.6	9.5	10.7	9.7	9.4	135
140										9.1	9.6	9.6	9.8	9.5	9.5	10.4	9.6	9.4	140
145										8.8	9.6		9.5	9.5	9.5	10.1	9.5	9.4	145
150										8.6			9.2	9.5	9.5	9.8	9.5	9.4	150
155													8.9	9.2		9.5	9.4	9.4	155
160													8.7	9.1		9.2	9.4	9.4	160
165																9	9.3	9.4	165
170																8.8	9.2		170
175																8.6	9.1		175

t_242_03000_00_000

STERLING CRANE

Lifting capacities

TNZZ



ft	128 ft			142 ft			156 ft			171 ft			185 ft			197 ft			ft
	72 ft			72 ft			72 ft			72 ft			72 ft			72 ft			
	0°	22.5°	45°	0°	22.5°	45°	0°	22.5°	45°	0°	22.5°	45°	0°	22.5°	45°	0°	22.5°	45°	
32	17.5			18.2															32
34	17.5			18.2															34
36	17.4			18.1															36
38	17.3			18															38
40	17.2			17.9			17.2												40
45	16.9			17.6			16.9			15.8									45
50	16.6			17.3			16.7			15.6									50
55	16.3			17			16.4			15.4			14.1			13			55
60	16			16.7			16.2			15.2			13.9			12.8			60
65	15.7	13.2		16.4	13.7		15.9			14.9			13.8			12.7			65
70	15.3	12.8		16	13.3		15.6			14.7			13.6			12.5			70
75	15	12.5		15.7	13		15.3	12.8		14.5	12.4		13.4			12.4			75
80	14.6	12.2		15.4	12.6		15	12.5		14.3	12.1		13.2	11.5		12.2			80
85	14.3	11.9	10	15	12.3	10.2	14.7	12.2	10.1	14	11.8		13	11.3		12	10.8		85
90	13.9	11.6	9.9	14.7	12	10	14.4	12	10	13.7	11.6		12.8	11.1		11.9	10.6		90
95	13.6	11.3	9.8	14.3	11.8	9.9	14.1	11.7	9.8	13.5	11.4	9.7	12.6	10.9		11.7	10.5		95
100	13.2	11.1	9.6	13.9	11.5	9.8	13.8	11.4	9.7	13.2	11.2	9.6	12.4	10.7	9.4	11.6	10.3		100
105	12.8	10.8	9.6	13.6	11.3	9.7	13.4	11.2	9.6	12.9	11	9.5	12.2	10.6	9.3	11.4	10.2	9.2	105
110	12.4	10.6	9.5	13.2	11	9.6	13.1	11	9.5	12.7	10.8	9.4	12	10.4	9.3	11.2	10	9.1	110
115	12.1	10.4	9.4	12.8	10.8	9.5	12.8	10.8	9.5	12.4	10.6	9.4	11.7	10.2	9.2	11.1	9.9	9.1	115
120	11.8	10.2	9.4	12.5	10.6	9.4	12.5	10.6	9.4	12.1	10.4	9.3	11.5	10.1	9.2	10.9	9.8	9	120
125	11.5	10.1	9.4	12.2	10.4	9.4	12.2	10.4	9.3	11.9	10.3	9.3	11.3	10	9.1	10.8	9.7	9	125
130	11.2	9.9	9.4	11.9	10.2	9.4	11.9	10.2	9.3	11.7	10.1	9.2	11.1	9.8	9.1	10.6	9.5	9	130
135	10.9	9.8	9.4	11.6	10.1	9.3	11.7	10.1	9.3	11.4	10	9.2	11	9.7	9.1	10.4	9.4	8.9	135
140	10.6	9.7	9.4	11.3	9.9	9.3	11.4	9.9	9.2	11.2	9.8	9.2	10.8	9.6	9	10.2	9.3	8.9	140
145	10.3	9.6	9.4	11	9.8	9.3	11.1	9.8	9.2	11	9.7	9.2	10.6	9.5	9	9.9	9.3	8.9	145
150	9.9	9.5	9.4	10.8	9.6	9.3	10.9	9.7	9.2	10.8	9.6	9.2	10.4	9.4	9	9.6	9.2	8.9	150
155	9.5	9.4	9.4	10.5	9.5	9.3	10.7	9.6	9.2	10.6	9.5	9.2	10.2	9.3	9	9.3	9.1	8.9	155
160	9.2	9.2	9.4	10.3	9.5	9.3	10.4	9.5	9.2	10.4	9.4	9.2	10	9.3	9	8.9	8.9	8.9	160
165	8.9	9	9.2	10	9.4	9.3	10.2	9.4	9.2	10.2	9.3	9.2	9.9	9.2	9	8.6	8.8	8.8	165
170	8.5	8.7	8.9	9.8	9.4	9.3	10	9.3	9.2	10	9.3	9.2	9.7	9.1	9	8.4	8.6	8.7	170
175	8.2	8.4	8.6	9.6	9.3	9.3	9.8	9.3	9.2	9.8	9.2	9.2	9.4	9.1	9	8.1	8.3	8.6	175
180	8	8.1	8.5	9.4	9.3	9.3	9.7	9.2	9.2	9.6	9.2	9.2	9.1	9	9	7.8	8.1	8.4	180
185	7.7	7.9		9.2	9.3	9.3	9.3	9.2	9.2	9.3	9.2	9.2	8.8	8.8	9	7.5	7.8	8.1	185
190	7.5			9	9.3	8.6	9	9.2	9.2	8.7	9.1	9.2	8.6	8.6	8.9	7.2	7.5	7.8	190
195				8.8	9.3		8.7	8.9	9.2	8.1	8.9	9.1	8.3	8.4	8.7	7	7.2	7.5	195
200				7.8			8.4	8.6	7.6	7.7	8.3	8.6	7.7	8.2	8.5	6.7	7	7.2	200
205				6.3			8.1	8.4	7.3	7.5	7.7	7.9	7.2	7.9	8.2	6.5	6.7	7	205
210							7.5	8		7.3	7.5	7.6	6.7	7.5	7.8	6.2	6.5	6.7	210
215							6.5			7	7.2	7.4	6.2	6.9	7.1	5.9	6.2	6.4	215
220							3.3			6.8	7		5.7	6.4	6.5	5.5	6	6.2	220
225										6.2	6.7		5.3	5.9	5.9	5	5.7	5.9	225
230										4.3			4.8	5.4	5.2	4.5	5.2	5.4	230
235													4.4	4.9		4.1	4.7	4.8	235
240													3.8			3.7	4.2		240
245																3.3	3.7		245
250																2.9	3.2		250

t_242_03000_00_000

STERLING CRANE

Lifting capacities

TNZK

44 – 197 ft
19.3 ft
72 ft
360°
154300 lbs
44100 lbs
75%

ft	44 ft			58 ft			72 ft			86 ft			100 ft			114 ft			ft
	72 ft			72 ft			72 ft			72 ft			72 ft			72 ft			
	0°	22.5°	45°	0°	22.5°	45°	0°	22.5°	45°	0°	22.5°	45°	0°	22.5°	45°	0°	22.5°	45°	
12	21.8																		12
13	22																		13
14	22.2																		14
15	22.2																		15
16	22.2			21.5															16
17	22.1			21.5															17
18	22.1			21.5															18
19	22			21.5			20.5												19
20	21.9			21.4			20.5												20
22	21.7			21.3			20.5		19.9										22
24	21.6			21.2			20.4		19.9										24
26	21.3			21			20.3		19.8				19						26
28	21.1			20.8			20.2		19.7				18.9						28
30	20.9			20.7			20		19.6				18.9			18.3			30
32	20.6			20.5			19.9		19.5				18.8			18.3			32
34	20.3			20.3			19.7		19.4				18.7			18.2			34
36	20			20			19.5		19.2				18.6			18.1			36
38	19.7			19.7			19.3		19.1				18.4			18			38
40	19.3	16.6		19.5			19.1		18.9				18.3			17.9			40
45	18.4	15.7		18.7	15.8		18.5		18.4				17.9			17.5			45
50	17.5	14.9		17.9	15.1		17.9		17.8				17.4			17.2			50
55	16.5	14.1		17.2	14.4		17.3	14.4	17.3	14.4			17			16.8			55
60	15.6	13.3	11.3	16.4	13.7		16.6	13.8	16.8	13.9			16.6	13.8		16.4	13.8		60
65	14.7	12.7	10.9	15.6	13.1	11	16	13.3	11	16.2	13.4		16.1	13.4		16	13.3		65
70	13.9	12.1	10.5	14.8	12.5	10.7	15.3	12.7	10.7	15.7	12.9		15.6	12.9		15.6	13		70
75	13.1	11.6	10.3	14.1	12	10.4	14.7	12.3	10.4	15.1	12.5	10.5	15.2	12.5	10.4	15.2	12.6		75
80	12.4	11.1	10	13.4	11.6	10.1	14	11.9	10.2	14.6	12.1	10.2	14.7	12.2	10.2	14.8	12.2	10.2	80
85	11.6	10.7	9.8	12.7	11.2	9.9	13.4	11.5	10	14	11.7	10.1	14.2	11.8	10.1	14.4	11.9	10	85
90	10.8	10.3	9.7	12.1	10.8	9.8	12.8	11.1	9.8	13.4	11.4	9.9	13.7	11.5	9.9	14	11.6	9.9	90
95	10.1	10	9.7	11.5	10.4	9.7	12.3	10.8	9.7	12.9	11.1	9.8	13.3	11.2	9.8	13.6	11.3	9.8	95
100	9.4	9.8	9.7	10.9	10.2	9.7	11.8	10.5	9.6	12.5	10.8	9.7	12.8	10.9	9.7	13.1	11.1	9.7	100
105	8.9	9.7		10.2	9.9	9.7	11.3	10.2	9.6	12	10.5	9.6	12.4	10.6	9.6	12.7	10.8	9.6	105
110				9.6	9.8	9.7	10.8	10	9.6	11.6	10.3	9.6	12	10.4	9.5	12.4	10.6	9.5	110
115				9.2	9.7		10.2	9.8	9.6	11.1	10	9.6	11.6	10.2	9.5	12	10.4	9.5	115
120				8.8	9.7		9.7	9.7	9.6	10.7	9.9	9.6	11.2	10	9.5	11.6	10.2	9.4	120
125							9.3	9.6	9.6	10.3	9.7	9.6	10.9	9.9	9.5	11.3	10	9.4	125
130							9	9.6		9.8	9.6	9.6	10.5	9.7	9.5	11	9.8	9.4	130
135							8.6	9.6		9.4	9.6	9.6	10.1	9.6	9.5	10.7	9.7	9.4	135
140										9.1	9.6	9.6	9.8	9.5	9.5	10.4	9.6	9.4	140
145										8.8	9.6		9.5	9.5	9.5	10.1	9.5	9.4	145
150										8.6			9.2	9.5	9.5	9.8	9.5	9.4	150
155													8.9	9.2		9.5	9.4	9.4	155
160													8.7	9.1		9.2	9.4	9.4	160
165																9	9.3	9.4	165
170																8.8	9.2		170
175																8.6	9.1		175

t_242_03010_00_000

STERLING CRANE

Lifting capacities

TNZK

44 – 197 ft
19.3 ft
72 ft
360°
154300 lbs
44100 lbs
75%

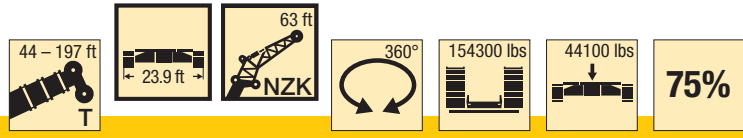
ft	128 ft			142 ft			156 ft			171 ft			185 ft			197 ft			ft
	72 ft			72 ft			72 ft			72 ft			72 ft			72 ft			
	0°	22.5°	45°	0°	22.5°	45°	0°	22.5°	45°	0°	22.5°	45°	0°	22.5°	45°	0°	22.5°	45°	
32	17.5			18.2															32
34	17.5			18.2															34
36	17.4			18.1															36
38	17.3			18															38
40	17.2			17.9			17.2												40
45	16.9			17.6			16.9			15.8									45
50	16.6			17.3			16.7			15.6									50
55	16.3			17			16.4			15.4			14.1			13			55
60	16			16.7			16.2			15.2			13.9			12.8			60
65	15.7	13.2		16.4	13.7		15.9			14.9			13.8			12.7			65
70	15.3	12.8		16	13.3		15.6			14.7			13.6			12.5			70
75	15	12.5		15.7	13		15.3	12.8		14.5	12.4		13.4			12.4			75
80	14.6	12.2		15.4	12.6		15	12.5		14.3	12.1		13.2	11.5		12.2			80
85	14.3	11.9	10	15	12.3	10.2	14.7	12.2	10.1	14	11.8		13	11.3		12	10.8		85
90	13.9	11.6	9.9	14.7	12	10	14.4	12	10	13.7	11.6		12.8	11.1		11.9	10.6		90
95	13.6	11.3	9.8	14.3	11.8	9.9	14.1	11.7	9.8	13.5	11.4	9.7	12.6	10.9		11.7	10.5		95
100	13.2	11.1	9.6	13.9	11.5	9.8	13.8	11.4	9.7	13.2	11.2	9.6	12.4	10.7	9.4	11.6	10.3		100
105	12.8	10.8	9.6	13.6	11.3	9.7	13.4	11.2	9.6	12.9	11	9.5	12.2	10.6	9.3	11.4	10.2	9.2	105
110	12.4	10.6	9.5	13.2	11	9.6	13.1	11	9.5	12.7	10.8	9.4	12	10.4	9.3	11.2	10	9.1	110
115	12.1	10.4	9.4	12.8	10.8	9.5	12.8	10.8	9.5	12.4	10.6	9.4	11.7	10.2	9.2	11.1	9.9	9.1	115
120	11.8	10.2	9.4	12.5	10.6	9.4	12.5	10.6	9.4	12.1	10.4	9.3	11.5	10.1	9.2	10.9	9.8	9	120
125	11.5	10.1	9.4	12.2	10.4	9.4	12.2	10.4	9.3	11.9	10.3	9.3	11.3	10	9.1	10.8	9.7	9	125
130	11.2	9.9	9.4	11.9	10.2	9.4	11.9	10.2	9.3	11.7	10.1	9.2	11.1	9.8	9.1	10.6	9.5	9	130
135	10.9	9.8	9.4	11.6	10.1	9.3	11.7	10.1	9.3	11.4	10	9.2	11	9.7	9.1	10.4	9.4	8.9	135
140	10.6	9.7	9.4	11.3	9.9	9.3	11.4	9.9	9.2	11.2	9.8	9.2	10.8	9.6	9	10.2	9.3	8.9	140
145	10.3	9.6	9.4	11	9.8	9.3	11.1	9.8	9.2	11	9.7	9.2	10.6	9.5	9	9.9	9.3	8.9	145
150	9.9	9.5	9.4	10.8	9.6	9.3	10.9	9.7	9.2	10.8	9.6	9.2	10.4	9.4	9	9.6	9.2	8.9	150
155	9.5	9.4	9.4	10.5	9.5	9.3	10.5	9.6	9.2	10.5	9.5	9.2	10.2	9.3	9	9.3	9.1	8.9	155
160	9.2	9.2	9.4	10.3	9.5	9.3	10.3	9.5	9.2	10	9.4	9.2	9.9	9.3	9	8.9	8.9	8.9	160
165	8.9	9	9.2	10	9.4	9.3	10	9.4	9.2	9.8	9.3	9.2	9.3	9.2	9	8.6	8.8	8.8	165
170	8.5	8.7	8.9	9.5	9.4	9.3	9.5	9.3	9.2	9.5	9.3	9.2	8.5	9.1	9	8.1	8.6	8.7	170
175	8.2	8.4	8.6	8.8	9.3	9.3	8.7	9.3	9.2	9	9.1	9.1	7.8	9.1	9	7.5	8.3	8.6	175
180	8	8.1	8.5	8.6	9	9.2	8.4	9	9.2	8.3	9	9.1	7.1	8.5	9	6.8	8.1	8.4	180
185	7.7	7.9		8.3	8.4	8.7	8.1	8.4	8.8	7.6	8.7	9.1	6.4	7.8	8.6	6.1	7.6	8.1	185
190	7.5			8.1	8.2	8.6	7.8	8	8.2	7	8	8.6	5.7	7	7.8	5.5	6.9	7.6	190
195				7.8	7.9		7.4	7.7	7.9	6.4	7.4	7.8	5.2	6.4	7	4.9	6.2	7	195
200				7.6			6.8	7.4	7.5	5.8	6.7	7	4.6	5.7	6.2	4.3	5.6	6.2	200
205				6.3			6.3	6.8	6.7	5.3	6.1	6.3	4.1	5.1	5.5	3.8	4.9	5.5	205
210							5.8	6.2		4.8	5.5	5.6	3.6	4.5	4.9	3.3	4.3	4.9	210
215							5.3			4.3	4.9	4.9	3.1	3.9	4.2	2.8	3.8	4.2	215
220							3.3			3.9	4.4		2.6	3.4	3.5	2.3	3.3	3.6	220
225										3.5	3.8		2.2	2.9	2.9	1.9	2.8	3	225
230										3.1			1.8	2.4	2.2	1.4	2.3	2.4	230
235													1.4	1.9			1.8	1.8	235

t_242_03010_00_000

STERLING CRANE

Lifting capacities

TNZZ



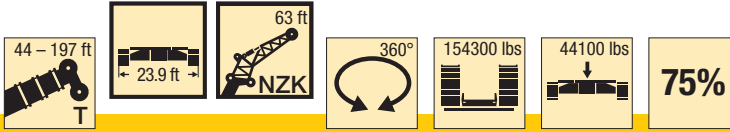
ft	44 ft			58 ft			72 ft			86 ft			100 ft			114 ft			ft
	63 ft			63 ft			63 ft			63 ft			63 ft			63 ft			
	0°	22.5°	45°	0°	22.5°	45°	0°	22.5°	45°	0°	22.5°	45°	0°	22.5°	45°	0°	22.5°	45°	
14	43.7																		14
15	43.4			40.7															15
16	43			40.5															16
17	42.7			40.2			36.6												17
18	42.2			40			36.5												18
19	41.8			39.7			36.3												19
20	41.3			39.5			36.2			34.1									20
22	40.3			38.9			35.8			33.9									22
24	39.2			38.3			35.5			33.6			30.9						24
26	38.1			37.5			35.1			33.4			30.7						26
28	37			36.8			34.6			33.1			30.6		29				28
30	35.9			35.9			34.1			32.8			30.4		28.9				30
32	34.8			35.1			33.6			32.5			30.2		28.7				32
34	33.6			34.2			33			32.1			29.9		28.5				34
36	32.4	23.8		33.3			32.4			31.7			29.7		28.3				36
38	31.1	23		32.4			31.7			31.1			29.4		28.1				38
40	29.7	22.2		31.4	22.6		30.9			30.6			29		27.8				40
45	26.3	20.6		28.8	21.1		29.1	21		29.1	21.1		28		27.1				45
50	23	19.1		26.1	19.7		27.1	19.8		27.6	20		26.9	19.7	26.3				50
55	20.6	17.8	15.7	23.4	18.5	15.9	25	18.8		26	19		25.6	18.9	25.4	18.8			55
60	18.5	16.7	15	21.1	17.5	15.2	23	17.8	15.2	24.4	18.1		24.4	18.1	24.4	18.1			60
65	16.7	15.7	14.4	19.2	16.5	14.7	21	16.9	14.7	22.7	17.3	14.8	23.1	17.3	14.7	23.3	17.4		65
70	15.2	14.9	13.8	17.6	15.7	14.2	19.3	16.1	14.3	21.1	16.5	14.4	21.8	16.6	14.3	22.2	16.7		70
75	14	14.1	13.4	16.2	15	13.7	17.9	15.4	13.9	19.5	15.9	14	20.5	16	14	21.2	16.2	14	75
80	12.8	13.4	13.1	14.9	14.3	13.4	16.6	14.8	13.5	18.2	15.3	13.7	19.2	15.4	13.7	20.1	15.6	13.7	80
85	11.8	12.9	12.9	13.8	13.7	13.1	15.4	14.2	13.2	17	14.7	13.4	18	14.9	13.4	19.1	15.1	13.5	85
90	10.9	12.4	12.9	12.8	13.1	12.9	14.4	13.7	13	15.9	14.2	13.1	17	14.4	13.2	18	14.7	13.3	90
95	10.1	12		11.9	12.7	12.8	13.5	13.2	12.8	15	13.7	12.9	16	14	13	17.1	14.2	13	95
100				11.2	12.3	12.8	12.7	12.8	12.7	14.1	13.3	12.8	15.1	13.6	12.8	16.2	13.8	12.9	100
105				10.5	12		11.9	12.5	12.7	13.3	12.9	12.7	14.3	13.2	12.7	15.3	13.4	12.7	105
110				9.9	11.8		11.3	12.2	12.7	12.6	12.6	12.6	13.6	12.9	12.6	14.6	13.1	12.6	110
115							10.7	11.9		11.9	12.3	12.6	12.9	12.6	12.5	13.9	12.8	12.5	115
120							10.1	11.7		11.3	12.1	12.6	12.3	12.2	12.4	13.3	12.6	12.4	120
125							9.7			10.8	11.8	12.6	11.8	11.9	12.1	12.7	12.3	12.4	125
130										10.3	11.6		11.3	11.4	11.7	12.2	12	12.3	130
135										9.9	11.6		10.8	10.9	11.3	11.7	11.7	12	135
140										9.6			10.4	10.5	10.9	11.2	11.4	11.6	140
145													10	10.2		10.8	11	11.3	145
150													9.7	9.9		10.4	10.6	11	150
155													9.5			10.1	10.3		155
160																9.8	10		160
165																9.6			165
170																5.4			170

t_242_02000_00_000

STERLING CRANE

Lifting capacities

TNZK



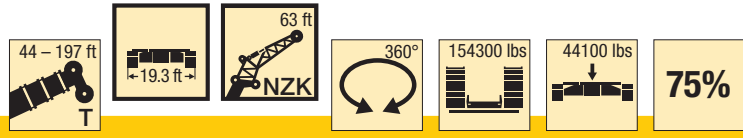
ft	128 ft			142 ft			156 ft			171 ft			185 ft			197 ft			ft
	63 ft			63 ft			63 ft			63 ft			63 ft			63 ft			
	0°	22.5°	45°	0°	22.5°	45°	0°	22.5°	45°	0°	22.5°	45°	0°	22.5°	45°	0°	22.5°	45°	
34	26.5			28.1															34
36	26.3			27.9															36
38	26.1			27.7															38
40	26			27.5			25.5												40
45	25.4			26.9			25			22.2									45
50	24.8			26.3			24.6			21.9									50
55	24.2			25.7			24.1			21.6			18.4						55
60	23.5	17.8		25.1	18.7		23.6			21.2			18.1			15.7			60
65	22.7	17.2		24.4	18.1		23.1			20.9			17.8			15.4			65
70	21.8	16.6		23.6	17.4		22.6	17.2		20.5			17.6			15.2			70
75	21	16.1	14	22.8	16.9		22	16.7		20.1	16		17.3			15			75
80	20.2	15.6	13.7	21.9	16.3	14	21.3	16.2	13.9	19.8	15.6		17.1	14.8		14.8	13.8		80
85	19.4	15.1	13.4	21.1	15.9	13.7	20.6	15.7	13.6	19.3	15.2	13.3	16.8	14.4		14.6	13.7		85
90	18.5	14.7	13.2	20.2	15.4	13.5	19.9	15.3	13.4	18.8	14.8	13.1	16.7	14.1		14.3	13.5		90
95	17.6	14.3	13	19.4	15	13.3	19.3	14.9	13.2	18.3	14.5	13	16.6	13.8	12.6	14.3	13.2		95
100	16.7	13.9	12.8	18.6	14.6	13.1	18.6	14.5	13	17.8	14.1	12.8	16.3	13.6	12.4	14.2	13	12.1	100
105	15.9	13.6	12.7	17.8	14.2	12.9	18	14.2	12.8	17.3	13.8	12.6	16	13.3	12.3	14	12.8	12	105
110	15.1	13.2	12.6	17	13.8	12.8	17.3	13.8	12.7	16.8	13.5	12.5	15.7	13.1	12.2	13.7	12.6	11.9	110
115	14.3	12.9	12.5	16.3	13.5	12.6	16.7	13.5	12.6	16.3	13.3	12.4	15.3	12.8	12.1	13.4	12.4	11.9	115
120	13.6	12.7	12.4	15.6	13.2	12.5	16	13.2	12.4	15.8	13	12.3	14.9	12.6	12	13	12.1	11.8	120
125	12.9	12.4	12.3	14.9	12.9	12.4	15.4	13	12.3	15.3	12.7	12.2	14.4	12.4	12	12.5	11.9	11.7	125
130	12.3	12.1	12.3	14.3	12.7	12.3	14.8	12.7	12.3	14.8	12.5	12.1	13.9	12.2	11.9	11.9	11.7	11.5	130
135	11.7	11.6	11.9	13.7	12.4	12.3	14.3	12.5	12.2	14.3	12.3	12.1	13.4	12	11.8	11.4	11.4	11.2	135
140	11.1	11.2	11.5	13.1	12.2	12.3	13.7	12.3	12.2	13.9	12.1	12	12.8	11.8	11.8	10.9	11	10.9	140
145	10.6	10.6	11	12.7	12	12.3	13.2	12.1	12.1	13.4	11.9	12	12.3	11.6	11.7	10.5	10.6	10.6	145
150	10.1	10.2	10.5	12.2	11.8	12.3	12.8	11.9	12.1	13	11.7	12	11.8	11.4	11.5	10	10.2	10.3	150
155	9.7	9.8	10.1	11.8	11.6	12.3	12.3	11.7	12.1	12.5	11.6	12	11.3	11.2	11.3	9.5	9.8	10	155
160	9.3	9.4	9.7	11.4	11.5	12.3	11.9	11.5	12.1	12.1	11.4	11.9	10.9	10.9	11	9.2	9.4	9.7	160
165	9	9.1	9.4	11	11.3	12.3	11.5	11.4	12.1	11.6	11.2	11.7	10.4	10.5	10.7	8.8	9.1	9.4	165
170	8.6	8.8		10.6	11.2	12.3	10.9	11.2	12.1	10.9	11.1	11.5	10.1	10.1	10.4	8.5	8.7	9.1	170
175	8.4	8.5		10.3	11.1	12.1	10.2	10.9	11.8	10.1	10.8	11.2	9.7	9.8	10.1	8.1	8.4	8.8	175
180	8.1			10.1	11	11.4	9.8	10.2	10.7	9.4	10.4	10.8	9.3	9.5	9.7	7.8	8.1	8.4	180
185				9.8	10.4		9.5	9.6	9.9	8.7	9.6	10.2	8.9	9.2	9.4	7.6	7.8	8.1	185
190				8.9	9.6		9.1	9.3	9.5	8.4	8.9	9.4	8.4	8.9	9.1	7.3	7.5	7.8	190
195				7.7	8.4		8.7	9		8.1	8.3	8.6	7.8	8.6	8.8	7	7.2	7.5	195
200							8.1	8.5		7.8	8	8.2	7.2	7.9	8.4	6.7	7	7.2	200
205							7	7.1		7.6	7.7	7.9	6.7	7.3	7.7	6.4	6.7	7	205
210							4.7			7.3	7.5		6.2	6.8	7.1	5.9	6.4	6.7	210
215										6.8			5.7	6.2	6.4	5.4	6.1	6.4	215
220										5.2			5.2	5.7	5.8	4.9	5.6	5.9	220
225													4.8	5.2	5.1	4.5	5.1	5.3	225
230													4.3	4.7		4	4.5	4.7	230
235													2.4			3.6	4		235
240																3.1	3.5		240
245																2.1			245

t_242_02000_00_000

STERLING CRANE

Lifting capacities

TNZK



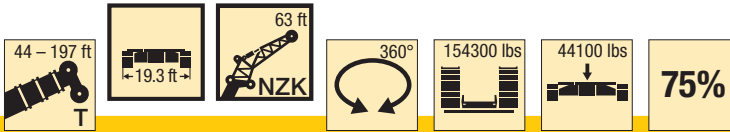
ft	44 ft			58 ft			72 ft			86 ft			100 ft			114 ft			ft
	63 ft			63 ft			63 ft			63 ft			63 ft			63 ft			
	0°	22.5°	45°	0°	22.5°	45°	0°	22.5°	45°	0°	22.5°	45°	0°	22.5°	45°	0°	22.5°	45°	
14	43.7																		14
15	43.4			40.7															15
16	43			40.5															16
17	42.7			40.2			36.6												17
18	42.2			40			36.5												18
19	41.8			39.7			36.3												19
20	41.3			39.5			36.2			34.1									20
22	40.3			38.9			35.8			33.9									22
24	39.2			38.3			35.5			33.6			30.9						24
26	38.1			37.5			35.1			33.4			30.7						26
28	37			36.8			34.6			33.1			30.6			29			28
30	35.9			35.9			34.1			32.8			30.4			28.9			30
32	34.8			35.1			33.6			32.5			30.2			28.7			32
34	33.6			34.2			33			32.1			29.9			28.5			34
36	32.4	23.8		33.3			32.4			31.7			29.7			28.3			36
38	31.1	23		32.4			31.7			31.1			29.4			28.1			38
40	29.7	22.2		31.4	22.6		30.9			30.6			29			27.8			40
45	26.3	20.6		28.8	21.1		29.1	21		29.1	21.1		28			27.1			45
50	23	19.1		26.1	19.7		27.1	19.8		27.6	20		26.9	19.7		26.3			50
55	20.6	17.8	15.7	23.4	18.5	15.9	25	18.8		26	19		25.6	18.9		25.4	18.8		55
60	18.5	16.7	15	21.1	17.5	15.2	23	17.8	15.2	24.4	18.1		24.4	18.1		24.4	18.1		60
65	16.7	15.7	14.4	19.2	16.5	14.7	21	16.9	14.7	22.7	17.3	14.8	23.1	17.3	14.7	23.3	17.4		65
70	15.2	14.9	13.8	17.6	15.7	14.2	19.3	16.1	14.3	21.1	16.5	14.4	21.8	16.6	14.3	22.2	16.7		70
75	14	14.1	13.4	16.2	15	13.7	17.9	15.4	13.9	19.5	15.9	14	20.5	16	14	21.2	16.2	14	75
80	12.8	13.4	13.1	14.9	14.3	13.4	16.6	14.8	13.5	18.2	15.3	13.7	19.2	15.4	13.7	20.1	15.6	13.7	80
85	11.8	12.9	12.9	13.8	13.7	13.1	15.4	14.2	13.2	17	14.7	13.4	18	14.9	13.4	19.1	15.1	13.5	85
90	10.9	12.4	12.9	12.8	13.1	12.9	14.4	13.7	13	15.9	14.2	13.1	17	14.4	13.2	18	14.7	13.3	90
95	10.1	12		11.9	12.7	12.8	13.5	13.2	12.8	15	13.7	12.9	16	14	13	17.1	14.2	13	95
100				11.2	12.3	12.8	12.7	12.8	12.7	14.1	13.3	12.8	15.1	13.6	12.8	16.2	13.8	12.9	100
105				10.5	12		11.9	12.5	12.7	13.3	12.9	12.7	14.3	13.2	12.7	15.3	13.4	12.7	105
110				9.9	11.8		11.3	12.2	12.7	12.6	12.6	12.6	13.6	12.9	12.6	14.6	13.1	12.6	110
115							10.7	11.9		11.9	12.3	12.6	12.9	12.6	12.5	13.9	12.8	12.5	115
120							10.1	11.7		11.3	12.1	12.6	12.3	12.2	12.4	13.3	12.6	12.4	120
125							9.7			10.8	11.8	12.6	11.8	11.9	12.1	12.7	12.3	12.4	125
130										10.3	11.6		11.3	11.4	11.7	12.2	12	12.3	130
135										9.9	11.6		10.8	10.9	11.3	11.7	11.7	12	135
140										9.6			10.4	10.5	10.9	11.2	11.4	11.6	140
145													10	10.2		10.8	11	11.3	145
150													9.7	9.9		10.4	10.6	11	150
155													9.5			10.1	10.3		155
160																9.8	10		160
165																9.6			165
170																5.4			170

t_242_02010_00_000

STERLING CRANE

Lifting capacities

TNZK



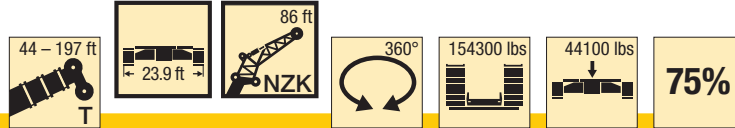
ft	128 ft			142 ft			156 ft			171 ft			185 ft			197 ft			ft
	63 ft			63 ft			63 ft			63 ft			63 ft			63 ft			
	0°	22.5°	45°	0°	22.5°	45°	0°	22.5°	45°	0°	22.5°	45°	0°	22.5°	45°	0°	22.5°	45°	
34	26.5			28.1															34
36	26.3			27.9															36
38	26.1			27.7															38
40	26			27.5			25.5												40
45	25.4			26.9			25			22.2									45
50	24.8			26.3			24.6			21.9									50
55	24.2			25.7			24.1			21.6			18.4						55
60	23.5	17.8		25.1	18.7		23.6			21.2			18.1			15.7			60
65	22.7	17.2		24.4	18.1		23.1			20.9			17.8			15.4			65
70	21.8	16.6		23.6	17.4		22.6	17.2		20.5			17.6			15.2			70
75	21	16.1	14	22.8	16.9		22	16.7		20.1	16		17.3			15			75
80	20.2	15.6	13.7	21.9	16.3	14	21.3	16.2	13.9	19.8	15.6		17.1	14.8		14.8	13.8		80
85	19.4	15.1	13.4	21.1	15.9	13.7	20.6	15.7	13.6	19.3	15.2	13.3	16.8	14.4		14.6	13.7		85
90	18.5	14.7	13.2	20.2	15.4	13.5	19.9	15.3	13.4	18.8	14.8	13.1	16.7	14.1		14.3	13.5		90
95	17.6	14.3	13	19.4	15	13.3	19.3	14.9	13.2	18.3	14.5	13	16.6	13.8	12.6	14.3	13.2		95
100	16.7	13.9	12.8	18.6	14.6	13.1	18.6	14.5	13	17.8	14.1	12.8	16.3	13.6	12.4	14.2	13	12.1	100
105	15.9	13.6	12.7	17.8	14.2	12.9	18	14.2	12.8	17.3	13.8	12.6	16	13.3	12.3	14	12.8	12	105
110	15.1	13.2	12.6	17	13.8	12.8	17.3	13.8	12.7	16.8	13.5	12.5	15.7	13.1	12.2	13.7	12.6	11.9	110
115	14.3	12.9	12.5	16.3	13.5	12.6	16.7	13.5	12.6	16.3	13.3	12.4	15.3	12.8	12.1	13.4	12.4	11.9	115
120	13.6	12.7	12.4	15.6	13.2	12.5	16	13.2	12.4	15.8	13	12.3	14.9	12.6	12	13	12.1	11.8	120
125	12.9	12.4	12.3	14.9	12.9	12.4	15.4	13	12.3	15.3	12.7	12.2	14.4	12.4	12	12.5	11.9	11.7	125
130	12.3	12.1	12.3	14.3	12.7	12.3	14.8	12.7	12.3	14.8	12.5	12.1	13.9	12.2	11.9	11.9	11.7	11.5	130
135	11.7	11.6	11.9	13.7	12.4	12.3	14.1	12.5	12.2	14.2	12.3	12.1	13.4	12	11.8	11.4	11.4	11.2	135
140	11.1	11.2	11.5	13.1	12.2	12.3	13.4	12.3	12.2	13.2	12.1	12	12.8	11.8	11.8	10.9	11	10.9	140
145	10.6	10.6	11	12.7	12	12.3	13	12.1	12.1	12.1	11.9	12	12.3	11.6	11.7	10.5	10.6	10.6	145
150	10.1	10.2	10.5	12.2	11.8	12.3	12.3	11.9	12.1	11.5	11.7	12	11.3	11.4	11.5	10	10.2	10.3	150
155	9.7	9.8	10.1	11.3	11.6	12.3	11.3	11.6	12.1	11	11.4	12	10.4	11.2	11.3	9.5	9.8	10	155
160	9.3	9.4	9.7	10.4	11.4	12.1	10.4	11.3	12	10.6	10.7	11.7	9.5	10.9	11	9.1	9.4	9.7	160
165	9	9.1	9.4	9.7	10.6	11.2	9.6	10.8	11.6	9.9	10.3	10.8	8.6	10.1	10.7	8.3	9.1	9.4	165
170	8.6	8.8		9.4	9.7	10.2	9.1	9.9	10.6	9.1	9.9	10.2	7.8	9.2	10.3	7.6	8.7	9.1	170
175	8.4	8.5		9.1	9.1	9.4	8.7	9.1	9.7	8.3	9.4	9.8	7.1	8.4	9.4	6.8	8.2	8.8	175
180	8.1			8.8	8.9	9.2	8.4	8.6	8.9	7.6	8.7	9.4	6.4	7.6	8.5	6.1	7.4	8.3	180
185				8.5	8.6		8	8.3	8.5	7	7.9	8.5	5.7	6.9	7.7	5.5	6.7	7.7	185
190				8.3	8.4		7.4	7.9	8.2	6.4	7.2	7.7	5.1	6.2	6.9	4.8	6	6.9	190
195				7.7	8.2		6.8	7.4		5.8	6.6	6.9	4.5	5.5	6.1	4.2	5.3	6.1	195
200							6.3	6.7		5.2	5.9	6.2	4	4.9	5.4	3.7	4.7	5.4	200
205							5.8	6.1		4.7	5.3	5.4	3.5	4.3	4.7	3.2	4.1	4.7	205
210							4.7			4.3	4.7		3	3.7	4	2.7	3.5	4.1	210
215										3.8			2.5	3.1	3.4	2.2	3	3.4	215
220										3.4			2.1	2.6	2.7	1.7	2.5	2.8	220
225													1.7	2.1	2		2	2.2	225
230														1.7			1.4	1.6	230

t_242_02010_00_000

STERLING CRANE

Lifting capacities

TNZZ



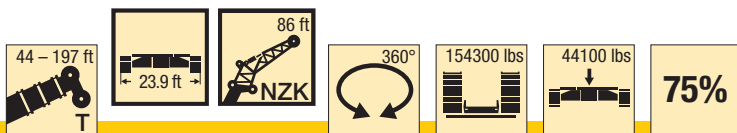
ft	44 ft			58 ft			72 ft			86 ft			100 ft			114 ft			ft
	86 ft			86 ft			86 ft			86 ft			86 ft			86 ft			
	0°	22.5°	45°	0°	22.5°	45°	0°	22.5°	45°	0°	22.5°	45°	0°	22.5°	45°	0°	22.5°	45°	
18	27.1																		18
19	27			25.4															19
20	26.8			25.3															20
22	26.4			25.1			23.1												22
24	26			24.8			22.9			21.7									24
26	25.5			24.6			22.8			21.6									26
28	25			24.2			22.6			21.5			20						28
30	24.4			23.9			22.4			21.4			19.9						30
32	23.7			23.5			22.1			21.2			19.8			18.8			32
34	22.9			22.8			21.7			21			19.7			18.7			34
36	22			22.2			21.3			20.7			19.5			18.6			36
38	21.2			21.5			20.9			20.4			19.3			18.4			38
40	20.5			20.9			20.4			20			19			18.3			40
45	18.6			19.3			19.1			19			18.3			17.8			45
50	17	13		17.8			17.9			17.9			17.4			17.1			50
55	15.6	12		16.4	12.2		16.7	12.1		16.9			16.6			16.4			55
60	14.2	11.2		15.2	11.4		15.6	11.4		15.9	11.5		15.8			15.7			60
65	12.9	10.5		14.1	10.7		14.5	10.8		15	10.9		15	10.8		15	10.8		65
70	11.7	9.8	8.8	13	10.1		13.6	10.2		14.1	10.4		14.2	10.3		14.3	10.3		70
75	10.7	9.3	8.4	12	9.6	8.5	12.8	9.7		13.3	9.9		13.5	9.9		13.6	9.9		75
80	9.8	8.9	8.1	11	9.2	8.2	11.9	9.3	8.2	12.6	9.5		12.8	9.5		13	9.5		80
85	9.1	8.4	7.8	10.2	8.8	7.9	11.1	9	8	11.8	9.1	8	12.1	9.2	8	12.4	9.2		85
90	8.5	8.1	7.6	9.5	8.4	7.7	10.3	8.6	7.8	11.1	8.8	7.8	11.5	8.9	7.8	11.8	8.9		90
95	7.9	7.8	7.4	8.9	8.1	7.5	9.7	8.3	7.6	10.5	8.5	7.6	10.9	8.6	7.7	11.3	8.7	7.7	95
100	7.5	7.5	7.2	8.4	7.8	7.3	9.1	8	7.4	9.9	8.2	7.5	10.4	8.3	7.5	10.8	8.4	7.5	100
105	7.1	7.2	7.1	7.9	7.6	7.2	8.7	7.8	7.3	9.3	8	7.3	9.9	8.1	7.4	10.3	8.2	7.4	105
110	6.6	7	7.1	7.5	7.3	7.1	8.2	7.5	7.1	8.9	7.8	7.2	9.4	7.9	7.2	9.8	8	7.3	110
115	6.3	6.8	7.1	7.1	7.1	7	7.8	7.3	7.1	8.5	7.5	7.1	9	7.6	7.1	9.4	7.8	7.1	115
120	6	6.8		6.8	6.9	7	7.4	7.1	7	8.1	7.3	7	8.6	7.5	7	9	7.6	7.1	120
125				6.4	6.8	7	7.1	7	7	7.7	7.2	6.9	8.2	7.3	7	8.7	7.4	7	125
130				6.1	6.7		6.8	6.8	7	7.4	7	6.9	7.9	7.1	6.9	8.4	7.2	6.9	130
135				5.9			6.5	6.7	7	7.1	6.9	6.9	7.6	7	6.9	8	7.1	6.9	135
140							6.2	6.7		6.8	6.7	6.9	7.3	6.8	6.9	7.7	7	6.8	140
145							6	6.7		6.5	6.7	6.9	7	6.7	6.9	7.4	6.8	6.8	145
150							5.9			6.3	6.6	6.9	6.8	6.6	6.9	7.2	6.7	6.8	150
155										6.1	6.6		6.5	6.6	6.9	7	6.6	6.8	155
160										5.9	6.6		6.3	6.5	6.9	6.7	6.6	6.8	160
165													6.1	6.5		6.5	6.5	6.8	165
170													6	6.5		6.3	6.5	6.8	170
175													5.8			6.2	6.4	6.8	175
180																6	6.4		180
185																5.9	6.4		185
190																5.8			190

t_242_04000_00_000

STERLING CRANE

Lifting capacities

TNZZ



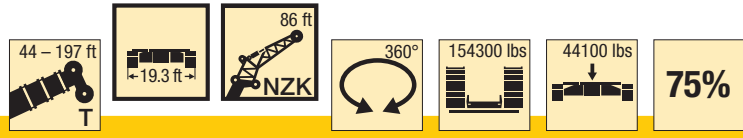
ft	128 ft			142 ft			156 ft			171 ft			185 ft			197 ft			ft
	86 ft			86 ft			86 ft			86 ft			86 ft			86 ft			
	0°	22.5°	45°	0°	22.5°	45°	0°	22.5°	45°	0°	22.5°	45°	0°	22.5°	45°	0°	22.5°	45°	
38	17.2			18.2															38
40	17.1			18.1															40
45	16.8			17.8			16.6												45
50	16.3			17.4			16.3			14.6									50
55	15.8			16.9			16			14.4									55
60	15.2			16.3			15.7			14.2			12						60
65	14.6			15.7			15.2			13.9			11.8			10.2			65
70	14			15.1			14.6			13.5			11.6			10.1			70
75	13.4	9.8		14.5	10.3		14.1			13.1			11.5			9.9			75
80	12.9	9.5		13.9	9.9		13.6	9.8		12.7			11.3			9.8			80
85	12.3	9.2		13.3	9.6		13.1	9.5		12.3			11.1			9.6			85
90	11.8	8.9		12.8	9.3		12.6	9.2		11.9	8.9		10.8			9.6			90
95	11.3	8.7	7.6	12.3	9		12.1	8.9		11.6	8.7		10.6	8.4		9.5	8.1		95
100	10.9	8.4	7.5	11.8	8.7	7.6	11.7	8.7	7.6	11.2	8.5		10.3	8.2		9.5	7.9		100
105	10.4	8.2	7.4	11.3	8.5	7.5	11.3	8.5	7.4	10.8	8.3	7.3	10	8		9.3	7.7		105
110	10	8	7.2	10.9	8.3	7.4	10.9	8.3	7.3	10.5	8.1	7.2	9.8	7.8		9.2	7.6		110
115	9.6	7.8	7.1	10.4	8.1	7.2	10.5	8.1	7.2	10.1	7.9	7.1	9.5	7.7	7	9	7.4		115
120	9.3	7.6	7.1	10	7.9	7.2	10.1	7.9	7.1	9.8	7.8	7.1	9.3	7.5	6.9	8.8	7.3	6.8	120
125	9	7.4	7	9.6	7.7	7.1	9.8	7.7	7	9.5	7.6	7	9.1	7.4	6.8	8.7	7.2	6.7	125
130	8.7	7.3	6.9	9.3	7.6	7	9.4	7.5	7	9.2	7.4	6.9	8.8	7.2	6.8	8.5	7.1	6.7	130
135	8.4	7.1	6.9	9.1	7.4	6.9	9.1	7.4	6.9	9	7.3	6.8	8.6	7.1	6.7	8.3	6.9	6.6	135
140	8.1	7	6.8	8.8	7.2	6.8	8.9	7.3	6.8	8.7	7.2	6.7	8.4	7	6.7	8.1	6.8	6.6	140
145	7.8	6.9	6.8	8.5	7.1	6.8	8.6	7.1	6.8	8.5	7	6.7	8.3	6.9	6.6	8	6.7	6.5	145
150	7.5	6.8	6.8	8.2	7	6.8	8.4	7	6.7	8.3	6.9	6.7	8.1	6.8	6.6	7.8	6.6	6.5	150
155	7.3	6.7	6.8	7.9	6.8	6.7	8.2	6.9	6.7	8.1	6.8	6.6	7.9	6.7	6.5	7.7	6.5	6.4	155
160	7.1	6.6	6.8	7.7	6.8	6.7	7.9	6.8	6.7	7.9	6.7	6.6	7.7	6.6	6.5	7.5	6.4	6.4	160
165	6.8	6.5	6.8	7.4	6.6	6.7	7.7	6.6	6.7	7.7	6.6	6.6	7.6	6.5	6.5	7.4	6.4	6.4	165
170	6.7	6.4	6.8	7.2	6.6	6.7	7.5	6.6	6.6	7.5	6.5	6.6	7.4	6.4	6.5	7.2	6.3	6.4	170
175	6.5	6.4	6.8	7	6.5	6.7	7.3	6.5	6.6	7.4	6.4	6.6	7.3	6.3	6.5	7	6.2	6.4	175
180	6.3	6.4	6.8	6.8	6.4	6.7	7.1	6.4	6.6	7.2	6.4	6.6	7.1	6.3	6.5	6.8	6.1	6.4	180
185	6.2	6.4	6.8	6.6	6.4	6.7	6.9	6.3	6.6	7	6.3	6.6	7	6.2	6.5	6.6	6.1	6.4	185
190	6	6.4		6.4	6.3	6.7	6.7	6.3	6.6	6.8	6.2	6.6	6.8	6.1	6.5	6.4	6	6.4	190
195	5.9	6.4		6.3	6.3	6.7	6.5	6.3	6.6	6.7	6.2	6.6	6.7	6.1	6.5	6.1	6	6.4	195
200	5.8			6.1	6.3	6.7	6.4	6.2	6.6	6.5	6.2	6.6	6.6	6.1	6.5	5.9	5.9	6.4	200
205	5.8			6	6.3		6.2	6.2	6.6	6.4	6.1	6.6	6.5	6	6.5	5.7	5.8	6.4	205
210				5.9	6.3		6.1	6.2	6.6	6.2	6.1	6.6	6.3	6	6.5	5.4	5.7	6.2	210
215				5.8	6.3		5.9	6.2	6.6	6.1	6.1	6.6	5.9	6	6.5	5.2	5.5	5.9	215
220				3.7			5.8	6.2		6	6.1	6.5	5.4	6	6.5	5	5.3	5.7	220
225							5.7	5.5		5.8	6	6.3	5	5.8	6.3	4.6	5.1	5.4	225
230							4.8	5.3		5.6	5.8		4.5	5.3	5.7	4.2	4.9	5.2	230
235										5.3	5.6		4.1	4.8	5.1	3.7	4.6	5	235
240										4.5			3.7	4.4	4.5	3.3	4.2	4.6	240
245										2.4			3.3	3.8	3.7	2.9	3.7	4	245
250													2.9	3.4		2.5	3.2	3.3	250
255													1.9	2.9		2.1	2.7	2.7	255
260																1.8	2.3		260

t_242_04000_00_000

STERLING CRANE

Lifting capacities

TNZK



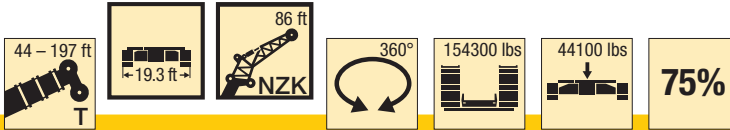
ft	44 ft			58 ft			72 ft			86 ft			100 ft			114 ft			ft
	86 ft			86 ft			86 ft			86 ft			86 ft			86 ft			
	0°	22.5°	45°	0°	22.5°	45°	0°	22.5°	45°	0°	22.5°	45°	0°	22.5°	45°	0°	22.5°	45°	
18	27.1																		18
19	27			25.4															19
20	26.8			25.3															20
22	26.4			25.1			23.1												22
24	26			24.8			22.9			21.7									24
26	25.5			24.6			22.8			21.6									26
28	25			24.2			22.6			21.5			20						28
30	24.4			23.9			22.4			21.4			19.9						30
32	23.7			23.5			22.1			21.2			19.8			18.8			32
34	22.9			22.8			21.7			21			19.7			18.7			34
36	22			22.2			21.3			20.7			19.5			18.6			36
38	21.2			21.5			20.9			20.4			19.3			18.4			38
40	20.5			20.9			20.4			20			19			18.3			40
45	18.6			19.3			19.1			19			18.3			17.8			45
50	17	13		17.8			17.9			17.9			17.4			17.1			50
55	15.6	12		16.4	12.2		16.7	12.1		16.9			16.6			16.4			55
60	14.2	11.2		15.2	11.4		15.6	11.4		15.9	11.5		15.8			15.7			60
65	12.9	10.5		14.1	10.7		14.5	10.8		15	10.9		15	10.8		15	10.8		65
70	11.7	9.8	8.8	13	10.1		13.6	10.2		14.1	10.4		14.2	10.3		14.3	10.3		70
75	10.7	9.3	8.4	12	9.6	8.5	12.8	9.7		13.3	9.9		13.5	9.9		13.6	9.9		75
80	9.8	8.9	8.1	11	9.2	8.2	11.9	9.3	8.2	12.6	9.5		12.8	9.5		13	9.5		80
85	9.1	8.4	7.8	10.2	8.8	7.9	11.1	9	8	11.8	9.1	8	12.1	9.2	8	12.4	9.2		85
90	8.5	8.1	7.6	9.5	8.4	7.7	10.3	8.6	7.8	11.1	8.8	7.8	11.5	8.9	7.8	11.8	8.9		90
95	7.9	7.8	7.4	8.9	8.1	7.5	9.7	8.3	7.6	10.5	8.5	7.6	10.9	8.6	7.7	11.3	8.7	7.7	95
100	7.5	7.5	7.2	8.4	7.8	7.3	9.1	8	7.4	9.9	8.2	7.5	10.4	8.3	7.5	10.8	8.4	7.5	100
105	7.1	7.2	7.1	7.9	7.6	7.2	8.7	7.8	7.3	9.3	8	7.3	9.9	8.1	7.4	10.3	8.2	7.4	105
110	6.6	7	7.1	7.5	7.3	7.1	8.2	7.5	7.1	8.9	7.8	7.2	9.4	7.9	7.2	9.8	8	7.3	110
115	6.3	6.8	7.1	7.1	7.1	7	7.8	7.3	7.1	8.5	7.5	7.1	9	7.6	7.1	9.4	7.8	7.1	115
120	6	6.8		6.8	6.9	7	7.4	7.1	7	8.1	7.3	7	8.6	7.5	7	9	7.6	7.1	120
125				6.4	6.8	7	7.1	7	7	7.7	7.2	6.9	8.2	7.3	7	8.7	7.4	7	125
130				6.1	6.7		6.8	6.8	7	7.4	7	6.9	7.9	7.1	6.9	8.4	7.2	6.9	130
135				5.9			6.5	6.7	7	7.1	6.9	6.9	7.6	7	6.9	8	7.1	6.9	135
140							6.2	6.7		6.8	6.7	6.9	7.3	6.8	6.9	7.7	7	6.8	140
145							6	6.7		6.5	6.7	6.9	7	6.7	6.9	7.4	6.8	6.8	145
150							5.9			6.3	6.6	6.9	6.8	6.6	6.9	7.2	6.7	6.8	150
155										6.1	6.6		6.5	6.6	6.9	7	6.6	6.8	155
160										5.9	6.6		6.3	6.5	6.9	6.7	6.6	6.8	160
165													6.1	6.5		6.5	6.5	6.8	165
170													6	6.5		6.3	6.5	6.8	170
175													5.8			6.2	6.4	6.8	175
180																6	6.4		180
185																5.9	6.4		185
190																5.8			190

t_242_04010_00_000

STERLING CRANE

Lifting capacities

TNZK



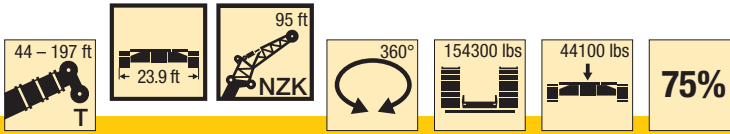
ft	128 ft			142 ft			156 ft			171 ft			185 ft			197 ft			ft	
	86 ft			86 ft			86 ft			86 ft			86 ft			86 ft				
	0°	22.5°	45°	0°	22.5°	45°	0°	22.5°	45°	0°	22.5°	45°	0°	22.5°	45°	0°	22.5°	45°		
38	17.2			18.2															38	
40	17.1			18.1															40	
45	16.8			17.8			16.6												45	
50	16.3			17.4			16.3			14.6									50	
55	15.8			16.9			16			14.4									55	
60	15.2			16.3			15.7			14.2			12						60	
65	14.6			15.7			15.2			13.9			11.8				10.2		65	
70	14			15.1			14.6			13.5			11.6				10.1		70	
75	13.4	9.8		14.5	10.3		14.1			13.1			11.5				9.9		75	
80	12.9	9.5		13.9	9.9		13.6	9.8		12.7			11.3				9.8		80	
85	12.3	9.2		13.3	9.6		13.1	9.5		12.3			11.1				9.6		85	
90	11.8	8.9		12.8	9.3		12.6	9.2		11.9	8.9		10.8				9.6		90	
95	11.3	8.7	7.6	12.3	9		12.1	8.9		11.6	8.7		10.6	8.4			9.5	8.1	95	
100	10.9	8.4	7.5	11.8	8.7	7.6	11.7	8.7	7.6	11.2	8.5		10.3	8.2			9.5	7.9	100	
105	10.4	8.2	7.4	11.3	8.5	7.5	11.3	8.5	7.4	10.8	8.3	7.3	10	8			9.3	7.7	105	
110	10	8	7.2	10.9	8.3	7.4	10.9	8.3	7.3	10.5	8.1	7.2	9.8	7.8			9.2	7.6	110	
115	9.6	7.8	7.1	10.4	8.1	7.2	10.5	8.1	7.2	10.1	7.9	7.1	9.5	7.7	7		9	7.4	115	
120	9.3	7.6	7.1	10	7.9	7.2	10.1	7.9	7.1	9.8	7.8	7.1	9.3	7.5	6.9		8.8	7.3	120	
125	9	7.4	7	9.6	7.7	7.1	9.8	7.7	7	9.5	7.6	7	9.1	7.4	6.8		8.7	7.2	125	
130	8.7	7.3	6.9	9.3	7.6	7	9.4	7.5	7	9.2	7.4	6.9	8.8	7.2	6.8		8.5	7.1	130	
135	8.4	7.1	6.9	9.1	7.4	6.9	9.1	7.4	6.9	9	7.3	6.8	8.6	7.1	6.7		8.3	6.9	135	
140	8.1	7	6.8	8.8	7.2	6.8	8.9	7.3	6.8	8.7	7.2	6.7	8.4	7	6.7		8.1	6.8	140	
145	7.8	6.9	6.8	8.5	7.1	6.8	8.6	7.1	6.8	8.5	7	6.7	8.3	6.9	6.6		8	6.7	145	
150	7.5	6.8	6.8	8.2	7	6.8	8.4	7	6.7	8.3	6.9	6.7	8.1	6.8	6.6		7.8	6.6	150	
155	7.3	6.7	6.8	7.9	6.8	6.7	8.2	6.9	6.7	8.1	6.8	6.6	7.9	6.7	6.5		7.7	6.5	155	
160	7.1	6.6	6.8	7.7	6.8	6.7	7.9	6.8	6.7	7.9	6.7	6.6	7.7	6.6	6.5		7.5	6.4	160	
165	6.8	6.5	6.8	7.4	6.6	6.7	7.7	6.6	6.7	7.7	6.6	6.6	7.6	6.5	6.5		7.4	6.4	165	
170	6.7	6.4	6.8	7.2	6.6	6.7	7.5	6.6	6.6	7.5	6.5	6.6	7.4	6.4	6.5		7.2	6.3	170	
175	6.5	6.4	6.8	7	6.5	6.7	7.2	6.5	6.6	7.2	6.4	6.6	7.2	6.3	6.5		6.8	6.2	175	
180	6.3	6.4	6.8	6.8	6.4	6.7	7	6.4	6.6	7.1	6.4	6.6	6.7	6.3	6.5		6.2	6.1	180	
185	6.2	6.4	6.8	6.6	6.4	6.7	6.8	6.3	6.6	6.9	6.3	6.6	6	6.2	6.5		5.6	6.1	185	
190	6	6.4		6.4	6.3	6.7	6.5	6.3	6.6	6.6	6.2	6.6	5.4	6.1	6.5		5.1	6	190	
195	5.9	6.4		6.1	6.3	6.7	6.4	6.2	6.6	6	6.2	6.6	4.8	6	6.5		4.5	6	195	
200	5.8			6	6.3	6.7	6.2	6.2	6.6	5.5	6.1	6.6	4.2	5.7	6.4		3.9	5.4	200	
205	5.8			5.9	6.3		5.9	6.2	6.6	4.9	6	6.6	3.7	5	6.1		3.4	4.8	205	
210				5.8	6.3		5.5	6.2	6.5	4.4	5.5	6.1	3.2	4.5	5.4		2.9	4.3	210	
215				5.8	6.3		5	5.7	5.8	4	4.9	5.4	2.8	3.9	4.7		2.4	3.7	215	
220				3.7			4.6	5.1		3.5	4.4	4.7	2.3	3.4	4		2	3.2	220	
225							4.2	4.6		3.1	3.9	4	1.9	2.8	3.4		1.4	2.7	225	
230							3.8	4.1		2.7	3.4		1.4	2.4	2.8			2.2	2.8	230
235										2.4	2.9			1.9	2.2			1.7	2.2	235
240										2				1.4	1.5				1.6	240
245										1.7										245

t_242_04010_00_000

STERLING CRANE

Lifting capacities

TNZK



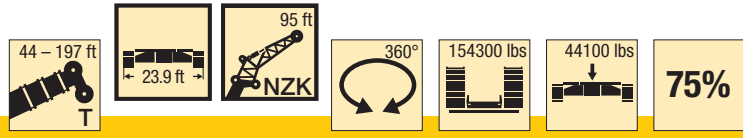
ft	44 ft			58 ft			72 ft			86 ft			100 ft			114 ft			ft
	95 ft			95 ft			95 ft			95 ft			95 ft			95 ft			
	0°	22.5°	45°	0°	22.5°	45°	0°	22.5°	45°	0°	22.5°	45°	0°	22.5°	45°	0°	22.5°	45°	
19	17.3			16.6															19
20	17.3			16.6															20
22	17.2			16.6			15.7												22
24	17.2			16.6			15.7												24
26	17.1			16.6			15.7			15.1									26
28	17			16.5			15.7			15.1			14.3						28
30	16.9			16.4			15.6			15.1			14.3						30
32	16.8			16.4			15.6			15			14.2			13.7			32
34	16.7			16.3			15.5			15			14.2			13.7			34
36	16.5			16.2			15.4			14.9			14.1			13.6			36
38	16.3			16			15.3			14.8			14.1			13.6			38
40	16.1			15.8			15.2			14.8			14			13.5			40
45	15.3			15.3			14.8			14.5			13.9			13.4			45
50	14.5			14.6			14.3			14.1			13.6			13.2			50
55	13.7	11.2		14			13.8			13.7			13.3			13			55
60	12.8	10.5		13.2	10.5		13.2			13.2			12.9			12.7			60
65	12	9.8		12.5	10		12.6	9.9		12.7	9.9		12.4			12.3			65
70	11.2	9.3		11.8	9.5		12	9.5		12.2	9.5		12			11.9			70
75	10.4	8.9		11.1	9.1		11.4	9.1		11.7	9.2		11.6	9.1		11.6	9.1		75
80	9.8	8.4	7.3	10.4	8.7		10.8	8.7		11.1	8.8		11.1	8.8		11.2	8.8		80
85	9.2	8	7	9.8	8.3	7	10.2	8.4	7	10.6	8.5		10.7	8.5		10.8	8.6		85
90	8.6	7.7	6.7	9.3	8	6.8	9.8	8.1	6.8	10.1	8.2		10.3	8.3		10.4	8.3		90
95	8.1	7.4	6.6	8.8	7.6	6.6	9.3	7.8	6.7	9.7	8	6.7	9.8	8	6.7	10	8		95
100	7.6	7.1	6.4	8.4	7.4	6.5	8.9	7.5	6.5	9.3	7.7	6.5	9.4	7.8	6.5	9.6	7.8	6.5	100
105	7.1	6.8	6.2	7.9	7.1	6.3	8.5	7.3	6.4	8.9	7.4	6.4	9.1	7.5	6.4	9.3	7.6	6.4	105
110	6.7	6.6	6.1	7.5	6.9	6.2	8.1	7.1	6.2	8.5	7.2	6.3	8.8	7.3	6.3	9	7.4	6.3	110
115	6.3	6.4	6	7.1	6.7	6.1	7.7	6.9	6.1	8.2	7	6.2	8.4	7.1	6.2	8.7	7.2	6.2	115
120	6	6.2	6	6.7	6.5	6	7.4	6.7	6	7.9	6.9	6.1	8.2	7	6.1	8.4	7	6.1	120
125	5.7	6.1		6.4	6.3	6	7	6.5	6	7.6	6.7	6	7.9	6.8	6	8.2	6.9	6	125
130	5.4	6.1		6.1	6.1	6	6.7	6.3	5.9	7.3	6.5	6	7.7	6.6	5.9	7.9	6.7	6	130
135				5.8	6	6	6.4	6.2	5.9	7	6.4	5.9	7.4	6.5	5.9	7.7	6.6	5.9	135
140				5.6	6		6.1	6.1	5.9	6.7	6.2	5.9	7.1	6.3	5.8	7.4	6.5	5.9	140
145				5.4			5.9	6	5.9	6.4	6.1	5.9	6.9	6.2	5.8	7.2	6.3	5.8	145
150							5.7	6		6.2	6	5.9	6.6	6.1	5.8	7	6.2	5.8	150
155							5.5			6	5.9	5.9	6.4	6	5.8	6.8	6.1	5.8	155
160										5.8	5.9	5.9	6.2	5.9	5.8	6.6	6	5.8	160
165										5.6	5.9		6	5.9	5.8	6.4	5.9	5.8	165
170										5.4			5.8	5.8	5.8	6.2	5.9	5.8	170
175													5.6	5.8	5.8	6	5.8	5.8	175
180													5.5			5.8	5.8	5.8	180
185													5.4			5.7	5.8	5.8	185
190																5.5	5.8		190
195																5.4	5.8		195
200																5.3			200

t_242_05000_00_000

STERLING CRANE

Lifting capacities

TNZK



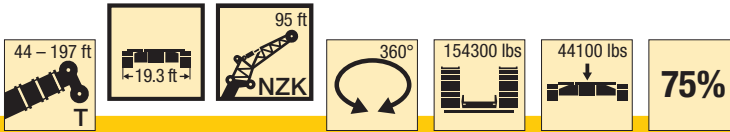
ft	128 ft			142 ft			156 ft			171 ft			185 ft			197 ft			ft
	95 ft			95 ft			95 ft			95 ft			95 ft			95 ft			
	0°	22.5°	45°	0°	22.5°	45°	0°	22.5°	45°	0°	22.5°	45°	0°	22.5°	45°	0°	22.5°	45°	
36	12.9																		36
38	12.9			13.5															38
40	12.8			13.4															40
45	12.7			13.3			12.6												45
50	12.6			13.2			12.5												50
55	12.4			13			12.4			11.4			10.2						55
60	12.2			12.9			12.3			11.3			10.1			9.2			60
65	11.9			12.6			12.1			11.2			10			9.1			65
70	11.6			12.3			11.9			11			9.9			9			70
75	11.3			12			11.6			10.8			9.8			8.9			75
80	11	8.7		11.7	9		11.3			10.6			9.7			8.8			80
85	10.6	8.5		11.3	8.8		11	8.7		10.4			9.5			8.7			85
90	10.3	8.3		11	8.6		10.8	8.5		10.2			9.3			8.7			90
95	9.9	8		10.6	8.3		10.5	8.3		9.9	8		9.2	7.7		8.6			95
100	9.6	7.8		10.3	8.1		10.1	8.1		9.6	7.8		9	7.5		8.4	7.3		100
105	9.3	7.6	6.4	10	7.9	6.5	9.8	7.8	6.4	9.4	7.7		8.8	7.4		8.3	7.1		105
110	9	7.4	6.3	9.6	7.7	6.4	9.6	7.7	6.3	9.2	7.5		8.7	7.2		8.2	7		110
115	8.7	7.2	6.2	9.3	7.5	6.3	9.3	7.5	6.2	8.9	7.3	6.2	8.5	7.1		8.1	6.9		115
120	8.5	7.1	6.1	9.1	7.3	6.2	9	7.3	6.2	8.7	7.2	6.1	8.3	7	6	7.9	6.8		120
125	8.3	6.9	6	8.8	7.2	6.1	8.8	7.2	6.1	8.5	7	6	8.2	6.8	5.9	7.8	6.6	5.8	125
130	8	6.8	5.9	8.5	7	6	8.5	7	6	8.3	6.9	5.9	8	6.7	5.8	7.6	6.5	5.7	130
135	7.8	6.6	5.9	8.3	6.9	6	8.3	6.9	5.9	8.2	6.8	5.8	7.8	6.6	5.8	7.5	6.4	5.7	135
140	7.6	6.5	5.8	8.1	6.7	5.9	8.1	6.7	5.9	8	6.7	5.8	7.6	6.5	5.7	7.4	6.3	5.6	140
145	7.4	6.4	5.8	7.8	6.6	5.8	7.9	6.6	5.8	7.8	6.5	5.8	7.5	6.4	5.7	7.3	6.2	5.6	145
150	7.2	6.3	5.8	7.6	6.5	5.8	7.7	6.5	5.8	7.6	6.4	5.7	7.4	6.3	5.6	7.1	6.2	5.5	150
155	7	6.2	5.7	7.4	6.4	5.8	7.5	6.4	5.7	7.4	6.3	5.7	7.2	6.2	5.6	7	6.1	5.5	155
160	6.8	6.1	5.7	7.2	6.2	5.7	7.3	6.3	5.7	7.3	6.2	5.6	7.1	6.1	5.5	6.9	6	5.5	160
165	6.7	6	5.7	7	6.2	5.7	7.2	6.2	5.7	7.1	6.1	5.6	6.9	6	5.5	6.8	5.9	5.5	165
170	6.5	5.9	5.7	6.9	6.1	5.7	7	6.1	5.6	7	6.1	5.6	6.8	6	5.5	6.6	5.8	5.4	170
175	6.3	5.8	5.7	6.7	6	5.7	6.8	6	5.6	6.8	6	5.6	6.7	5.9	5.5	6.5	5.8	5.4	175
180	6.1	5.8	5.7	6.6	5.9	5.7	6.7	5.9	5.6	6.7	5.9	5.6	6.6	5.8	5.5	6.4	5.7	5.4	180
185	5.9	5.8	5.7	6.4	5.8	5.7	6.6	5.9	5.6	6.5	5.8	5.6	6.4	5.7	5.5	6.3	5.7	5.4	185
190	5.8	5.7	5.7	6.2	5.8	5.7	6.4	5.8	5.6	6.4	5.8	5.6	6.3	5.7	5.5	6.2	5.6	5.4	190
195	5.7	5.7	5.7	6.1	5.7	5.7	6.3	5.7	5.6	6.3	5.7	5.6	6.2	5.6	5.5	6.1	5.6	5.4	195
200	5.5	5.7	5.7	5.9	5.7	5.7	6.1	5.7	5.6	6.2	5.7	5.6	6.1	5.6	5.5	5.9	5.5	5.4	200
205	5.4	5.7		5.8	5.7	5.7	6	5.7	5.6	6.1	5.6	5.6	6	5.6	5.5	5.7	5.5	5.4	205
210	5.3			5.6	5.7	5.7	5.9	5.6	5.6	6	5.6	5.6	6	5.5	5.5	5.5	5.4	5.4	210
215	4.9			5.5	5.7		5.8	5.6	5.6	5.9	5.6	5.6	5.9	5.5	5.5	5.3	5.4	5.4	215
220				5.4	5.7		5.7	5.6	5.6	5.7	5.6	5.6	5.7	5.5	5.5	5.1	5.3	5.4	220
225				5.3			5.5	5.6	5.6	5.6	5.5	5.6	5.5	5.5	5.5	4.9	5.1	5.4	225
230							5.4	5.6		5.5	5.5	5.6	5	5.5	5.5	4.7	5	5.2	230
235							5.1	5.6		5.4	5.5	5.6	4.6	5.4	5.5	4.3	4.8	5	235
240							3.9			5.2	5.4	5.6	4.2	5	5.2	3.8	4.6	4.8	240
245										4.9	5.3		3.8	4.6	4.6	3.4	4.4	4.6	245
250										3.9			3.4	4.1	3.9	3	3.9	4.1	250
255										1.4			3	3.6		2.6	3.4	3.5	255
260													2.6	3.1		2.3	3	2.9	260
265																1.9	2.5		265
270																1.6	2.1		270

t_242_05000_00_000

STERLING CRANE

Lifting capacities

TNZK



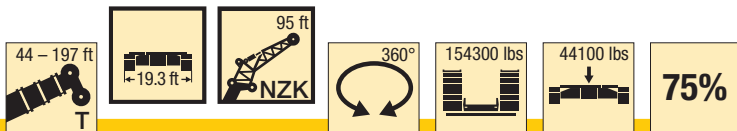
ft	44 ft			58 ft			72 ft			86 ft			100 ft			114 ft			ft
	95 ft			95 ft			95 ft			95 ft			95 ft			95 ft			
	0°	22.5°	45°	0°	22.5°	45°	0°	22.5°	45°	0°	22.5°	45°	0°	22.5°	45°	0°	22.5°	45°	
19	17.3			16.6															19
20	17.3			16.6															20
22	17.2			16.6			15.7												22
24	17.2			16.6			15.7												24
26	17.1			16.6			15.7			15.1									26
28	17			16.5			15.7			15.1			14.3						28
30	16.9			16.4			15.6			15.1			14.3						30
32	16.8			16.4			15.6			15			14.2			13.7			32
34	16.7			16.3			15.5			15			14.2			13.7			34
36	16.5			16.2			15.4			14.9			14.1			13.6			36
38	16.3			16			15.3			14.8			14.1			13.6			38
40	16.1			15.8			15.2			14.8			14			13.5			40
45	15.3			15.3			14.8			14.5			13.9			13.4			45
50	14.5			14.6			14.3			14.1			13.6			13.2			50
55	13.7	11.2		14			13.8			13.7			13.3			13			55
60	12.8	10.5		13.2	10.5		13.2			13.2			12.9			12.7			60
65	12	9.8		12.5	10		12.6	9.9		12.7	9.9		12.4			12.3			65
70	11.2	9.3		11.8	9.5		12	9.5		12.2	9.5		12			11.9			70
75	10.4	8.9		11.1	9.1		11.4	9.1		11.7	9.2		11.6	9.1		11.6	9.1		75
80	9.8	8.4	7.3	10.4	8.7		10.8	8.7		11.1	8.8		11.1	8.8		11.2	8.8		80
85	9.2	8	7	9.8	8.3	7	10.2	8.4	7	10.6	8.5		10.7	8.5		10.8	8.6		85
90	8.6	7.7	6.7	9.3	8	6.8	9.8	8.1	6.8	10.1	8.2		10.3	8.3		10.4	8.3		90
95	8.1	7.4	6.6	8.8	7.6	6.6	9.3	7.8	6.7	9.7	8	6.7	9.8	8	6.7	10	8		95
100	7.6	7.1	6.4	8.4	7.4	6.5	8.9	7.5	6.5	9.3	7.7	6.5	9.4	7.8	6.5	9.6	7.8	6.5	100
105	7.1	6.8	6.2	7.9	7.1	6.3	8.5	7.3	6.4	8.9	7.4	6.4	9.1	7.5	6.4	9.3	7.6	6.4	105
110	6.7	6.6	6.1	7.5	6.9	6.2	8.1	7.1	6.2	8.5	7.2	6.3	8.8	7.3	6.3	9	7.4	6.3	110
115	6.3	6.4	6	7.1	6.7	6.1	7.7	6.9	6.1	8.2	7	6.2	8.4	7.1	6.2	8.7	7.2	6.2	115
120	6	6.2	6	6.7	6.5	6	7.4	6.7	6	7.9	6.9	6.1	8.2	7	6.1	8.4	7	6.1	120
125	5.7	6.1		6.4	6.3	6	7	6.5	6	7.6	6.7	6	7.9	6.8	6	8.2	6.9	6	125
130	5.4	6.1		6.1	6.1	6	6.7	6.3	5.9	7.3	6.5	6	7.7	6.6	5.9	7.9	6.7	6	130
135				5.8	6	6	6.4	6.2	5.9	7	6.4	5.9	7.4	6.5	5.9	7.7	6.6	5.9	135
140				5.6	6		6.1	6.1	5.9	6.7	6.2	5.9	7.1	6.3	5.8	7.4	6.5	5.9	140
145				5.4			5.9	6	5.9	6.4	6.1	5.9	6.9	6.2	5.8	7.2	6.3	5.8	145
150							5.7	6		6.2	6	5.9	6.6	6.1	5.8	7	6.2	5.8	150
155							5.5			6	5.9	5.9	6.4	6	5.8	6.8	6.1	5.8	155
160										5.8	5.9	5.9	6.2	5.9	5.8	6.6	6	5.8	160
165										5.6	5.9		6	5.9	5.8	6.4	5.9	5.8	165
170										5.4			5.8	5.8	5.8	6.2	5.9	5.8	170
175													5.6	5.8	5.8	6	5.8	5.8	175
180													5.5			5.8	5.8	5.8	180
185													5.4			5.7	5.8	5.8	185
190																5.5	5.8		190
195																5.4	5.8		195
200																5.3			200

t_242_05010_00_000

STERLING CRANE

Lifting capacities

TNZK



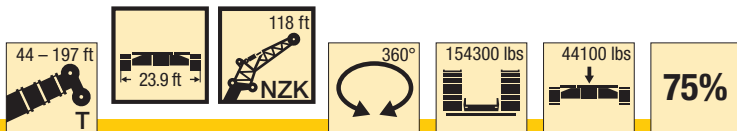
ft	128 ft			142 ft			156 ft			171 ft			185 ft			197 ft			ft	
	95 ft			95 ft			95 ft			95 ft			95 ft			95 ft				
	0°	22.5°	45°	0°	22.5°	45°	0°	22.5°	45°	0°	22.5°	45°	0°	22.5°	45°	0°	22.5°	45°		
36	12.9																		36	
38	12.9			13.5															38	
40	12.8			13.4															40	
45	12.7			13.3			12.6												45	
50	12.6			13.2			12.5												50	
55	12.4			13			12.4			11.4				10.2					55	
60	12.2			12.9			12.3			11.3				10.1			9.2		60	
65	11.9			12.6			12.1			11.2				10			9.1		65	
70	11.6			12.3			11.9			11				9.9			9		70	
75	11.3			12			11.6			10.8				9.8			8.9		75	
80	11	8.7		11.7	9		11.3			10.6				9.7			8.8		80	
85	10.6	8.5		11.3	8.8		11	8.7		10.4				9.5			8.7		85	
90	10.3	8.3		11	8.6		10.8	8.5		10.2				9.3			8.7		90	
95	9.9	8		10.6	8.3		10.5	8.3		9.9	8			9.2	7.7		8.6		95	
100	9.6	7.8		10.3	8.1		10.1	8.1		9.6	7.8			9	7.5		8.4	7.3	100	
105	9.3	7.6	6.4	10	7.9	6.5	9.8	7.8	6.4	9.4	7.7			8.8	7.4		8.3	7.1	105	
110	9	7.4	6.3	9.6	7.7	6.4	9.6	7.7	6.3	9.2	7.5			8.7	7.2		8.2	7	110	
115	8.7	7.2	6.2	9.3	7.5	6.3	9.3	7.5	6.2	8.9	7.3	6.2		8.5	7.1		8.1	6.9	115	
120	8.5	7.1	6.1	9.1	7.3	6.2	9	7.3	6.2	8.7	7.2	6.1		8.3	7	6	7.9	6.8	120	
125	8.3	6.9	6	8.8	7.2	6.1	8.8	7.2	6.1	8.5	7	6		8.2	6.8	5.9	7.8	6.6	5.8	125
130	8	6.8	5.9	8.5	7	6	8.5	7	6	8.3	6.9	5.9		8	6.7	5.8	7.6	6.5	5.7	130
135	7.8	6.6	5.9	8.3	6.9	6	8.3	6.9	5.9	8.2	6.8	5.8		7.8	6.6	5.8	7.5	6.4	5.7	135
140	7.6	6.5	5.8	8.1	6.7	5.9	8.1	6.7	5.9	8	6.7	5.8		7.6	6.5	5.7	7.4	6.3	5.6	140
145	7.4	6.4	5.8	7.8	6.6	5.8	7.9	6.6	5.8	7.8	6.5	5.8		7.5	6.4	5.7	7.3	6.2	5.6	145
150	7.2	6.3	5.8	7.6	6.5	5.8	7.7	6.5	5.8	7.6	6.4	5.7		7.4	6.3	5.6	7.1	6.2	5.5	150
155	7	6.2	5.7	7.4	6.4	5.8	7.5	6.4	5.7	7.4	6.3	5.7		7.2	6.2	5.6	7	6.1	5.5	155
160	6.8	6.1	5.7	7.2	6.2	5.7	7.3	6.3	5.7	7.3	6.2	5.6		7.1	6.1	5.5	6.9	6	5.5	160
165	6.7	6	5.7	7	6.2	5.7	7.2	6.2	5.7	7.1	6.1	5.6		6.9	6	5.5	6.8	5.9	5.5	165
170	6.5	5.9	5.7	6.9	6.1	5.7	7	6.1	5.6	7	6.1	5.6		6.8	6	5.5	6.6	5.8	5.4	170
175	6.3	5.8	5.7	6.7	6	5.7	6.8	6	5.6	6.8	6	5.6		6.7	5.9	5.5	6.5	5.8	5.4	175
180	6.1	5.8	5.7	6.6	5.9	5.7	6.7	5.9	5.6	6.7	5.9	5.6		6.6	5.8	5.5	6.4	5.7	5.4	180
185	5.9	5.8	5.7	6.4	5.8	5.7	6.5	5.9	5.6	6.5	5.8	5.6		6.4	5.7	5.5	6.1	5.7	5.4	185
190	5.8	5.7	5.7	6.2	5.8	5.7	6.4	5.8	5.6	6.3	5.8	5.6		6	5.7	5.5	5.7	5.6	5.4	190
195	5.7	5.7	5.7	6.1	5.7	5.7	6.2	5.7	5.6	6.2	5.7	5.6		5.4	5.6	5.5	5.1	5.6	5.4	195
200	5.5	5.7	5.7	5.9	5.7	5.7	6	5.7	5.6	6	5.7	5.6		4.9	5.6	5.5	4.6	5.5	5.4	200
205	5.4	5.7		5.7	5.7	5.7	5.9	5.6	5.6	5.5	5.6	5.6		4.3	5.6	5.5	4	5.4	5.4	205
210	5.3			5.5	5.7	5.7	5.8	5.6	5.6	5	5.6	5.6		3.8	5.3	5.5	3.5	5.1	5.4	210
215	4.9			5.5	5.7		5.5	5.6	5.6	4.5	5.5	5.6		3.3	4.7	5.3	3	4.5	5.3	215
220				5.4	5.7		5.1	5.6	5.6	4.1	5.1	5.5		2.9	4.1	4.8	2.6	4	4.8	220
225				5.3			4.6	5.3	5.2	3.6	4.6	4.9		2.4	3.6	4.2	2.1	3.4	4.2	225
230							4.2	4.8		3.2	4.1	4.2		2	3.1	3.6	1.7	2.9	3.6	230
235							3.8	4.2		2.8	3.6	3.6		1.6	2.6	3		2.4	3	235
240							3.5			2.5	3.1	2.8			2.2	2.4		2	2.4	240
245										2.1	2.6				1.7	1.8		1.5	1.9	245
250										1.8										250
255										1.4										255

t_242_05010_00_000

STERLING CRANE

Lifting capacities

TNZK



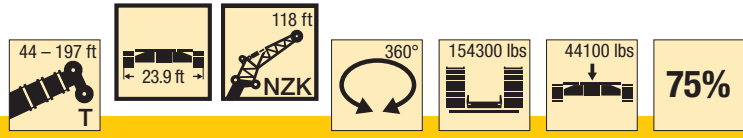
ft	44 ft			58 ft			72 ft			86 ft			100 ft			114 ft			ft
	118 ft			118 ft			118 ft			118 ft			118 ft			118 ft			
	0°	22.5°	45°	0°	22.5°	45°	0°	22.5°	45°	0°	22.5°	45°	0°	22.5°	45°	0°	22.5°	45°	
22	12.2																		22
24	12.6																		24
26	12.8			12															26
28	12.7			12.2			11.3												28
30	12.7			12.1			11.3												30
32	12.5			12			11.3			10.8									32
34	12.4			12			11.2			10.8									34
36	12.3			11.9			11.2			10.7			10.1						36
38	12.1			11.7			11.1			10.7			10.1			9.7			38
40	11.9			11.6			11			10.6			10			9.7			40
45	11.4			11.2			10.7			10.4			9.9			9.6			45
50	10.9			10.8			10.4			10.2			9.7			9.5			50
55	10.3			10.3			10			9.8			9.5			9.3			55
60	9.7			9.8			9.6			9.5			9.2			9.1			60
65	9.1	7.6		9.3			9.2			9.2			9			8.8			65
70	8.6	7.2		8.8			8.8			8.9			8.7			8.6			70
75	8.1	6.8		8.4	6.9		8.4			8.5			8.4			8.3			75
80	7.6	6.5		7.9	6.5		8	6.5		8.2	6.5		8.1			8.1			80
85	7.2	6.1		7.5	6.2		7.7	6.2		7.8	6.2		7.8	6.2		7.8	6.2		85
90	6.8	5.8		7.1	5.9		7.3	6		7.5	6		7.5	6		7.6	6		90
95	6.4	5.6		6.8	5.7		7	5.7		7.2	5.8		7.2	5.8		7.3	5.8		95
100	6.1	5.3	4.5	6.4	5.4		6.7	5.5		6.9	5.6		6.9	5.6		7	5.6		100
105	5.7	5.1	4.4	6.1	5.2	4.4	6.4	5.3	4.4	6.6	5.4		6.7	5.4		6.8	5.4		105
110	5.4	4.8	4.2	5.8	5	4.3	6.1	5.1	4.3	6.3	5.2		6.4	5.2		6.6	5.2		110
115	5.1	4.6	4.1	5.5	4.8	4.2	5.8	4.9	4.2	6.1	5	4.2	6.2	5	4.2	6.3	5.1		115
120	4.8	4.4	4	5.3	4.6	4	5.6	4.7	4.1	5.8	4.9	4.1	6	4.9	4.1	6.1	4.9	4	120
125	4.5	4.3	3.9	5	4.5	4	5.3	4.6	4	5.6	4.7	4	5.8	4.7	4	5.9	4.8	4	125
130	4.3	4.1	3.8	4.8	4.3	3.8	5.1	4.4	3.9	5.4	4.5	3.9	5.5	4.6	3.9	5.7	4.7	3.9	130
135	4.1	4	3.7	4.5	4.2	3.8	4.9	4.3	3.8	5.2	4.4	3.8	5.3	4.5	3.8	5.5	4.5	3.8	135
140	3.8	3.9	3.7	4.3	4	3.7	4.7	4.2	3.7	5	4.3	3.8	5.2	4.3	3.7	5.3	4.4	3.8	140
145	3.6	3.8	3.7	4.1	3.9	3.7	4.5	4	3.7	4.8	4.2	3.7	5	4.2	3.7	5.2	4.3	3.7	145
150	3.5	3.7		3.9	3.8	3.7	4.3	4	3.6	4.6	4	3.7	4.8	4.1	3.6	5	4.2	3.6	150
155				3.7	3.7		4.1	3.9	3.6	4.5	3.9	3.6	4.7	4	3.6	4.8	4.1	3.6	155
160				3.5	3.7		3.9	3.8	3.6	4.3	3.9	3.6	4.5	3.9	3.6	4.7	4	3.6	160
165				3.4	3.7		3.8	3.7	3.6	4.1	3.8	3.6	4.4	3.8	3.6	4.5	3.9	3.5	165
170							3.6	3.6		3.9	3.7	3.6	4.2	3.8	3.6	4.4	3.8	3.5	170
175							3.5	3.6		3.8	3.6	3.6	4.1	3.7	3.6	4.3	3.7	3.5	175
180							3.4			3.7	3.6	3.6	3.9	3.6	3.6	4.2	3.7	3.5	180
185										3.5	3.6		3.8	3.6	3.6	4	3.6	3.5	185
190										3.4	3.6		3.7	3.6	3.6	3.9	3.6	3.5	190
195										3.3			3.6	3.6		3.8	3.5	3.5	195
200													3.4	3.6		3.7	3.5	3.5	200
205													3.4			3.6	3.5	3.5	205
210													3.3			3.5	3.5		210
215																3.4	3.5		215
220																3.3	3.5		220

t_242_06000_00_000

STERLING CRANE

Lifting capacities

TNZK



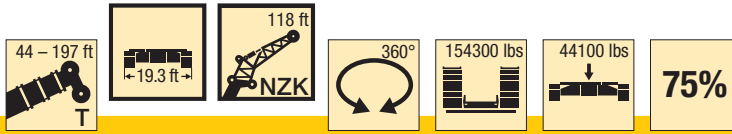
ft	128 ft			142 ft			156 ft			171 ft			185 ft			197 ft			ft
	118 ft			118 ft			118 ft			118 ft			118 ft			118 ft			
	0°	22.5°	45°	0°	22.5°	45°	0°	22.5°	45°	0°	22.5°	45°	0°	22.5°	45°	0°	22.5°	45°	
45	9.1			9.5															45
50	9			9.4															50
55	8.9			9.3			8.9			8.2									55
60	8.8			9.2			8.8			8.1			7.4						60
65	8.6			9			8.7			8.1			7.3			6.7			65
70	8.4			8.8			8.5			8			7.2			6.6			70
75	8.1			8.6			8.3			7.8			7.1			6.6			75
80	7.9			8.3			8.1			7.6			7			6.5			80
85	7.7			8.1			7.9			7.5			6.9			6.4			85
90	7.5			7.9			7.7			7.3			6.8			6.3			90
95	7.2	5.7		7.7	5.9		7.5			7.1			6.7			6.2			95
100	7	5.6		7.4	5.8		7.3	5.7		7			6.5			6.1			100
105	6.8	5.4		7.2	5.6		7.1	5.5		6.8	5.4		6.4			6			105
110	6.6	5.2		7	5.4		6.9	5.4		6.6	5.2		6.2	5		5.9	4.8		110
115	6.3	5.1		6.7	5.3		6.7	5.2		6.4	5.1		6.1	4.9		5.7	4.7		115
120	6.2	4.9		6.5	5.1		6.5	5.1		6.3	5		5.9	4.8		5.6	4.6		120
125	6	4.8	3.9	6.3	5	4	6.3	4.9	4	6.1	4.9		5.8	4.7		5.5	4.5		125
130	5.8	4.7	3.9	6.1	4.9	3.9	6.1	4.8	3.9	5.9	4.7		5.7	4.6		5.4	4.4		130
135	5.6	4.6	3.8	5.9	4.7	3.9	6	4.7	3.8	5.8	4.6	3.8	5.5	4.5		5.3	4.3		135
140	5.4	4.4	3.7	5.8	4.6	3.8	5.8	4.6	3.8	5.6	4.5	3.7	5.4	4.4	3.6	5.2	4.2		140
145	5.2	4.3	3.7	5.6	4.5	3.7	5.6	4.5	3.7	5.5	4.4	3.7	5.3	4.3	3.6	5.1	4.2	3.5	145
150	5.1	4.2	3.6	5.4	4.4	3.7	5.5	4.4	3.7	5.3	4.3	3.6	5.2	4.2	3.5	5	4.1	3.5	150
155	4.9	4.1	3.6	5.2	4.3	3.6	5.3	4.3	3.6	5.2	4.2	3.6	5	4.1	3.5	4.9	4	3.4	155
160	4.8	4	3.5	5.1	4.2	3.6	5.2	4.2	3.6	5.1	4.1	3.5	4.9	4	3.4	4.7	3.9	3.4	160
165	4.7	3.9	3.5	4.9	4.1	3.5	5	4.1	3.5	5	4.1	3.5	4.8	4	3.4	4.7	3.9	3.4	165
170	4.5	3.9	3.5	4.8	4	3.5	4.9	4	3.5	4.8	4	3.4	4.7	3.9	3.4	4.6	3.8	3.3	170
175	4.4	3.8	3.5	4.7	3.9	3.5	4.7	3.9	3.5	4.7	3.9	3.4	4.6	3.8	3.4	4.5	3.7	3.3	175
180	4.3	3.7	3.5	4.5	3.8	3.5	4.6	3.9	3.4	4.6	3.8	3.4	4.5	3.8	3.3	4.4	3.7	3.3	180
185	4.2	3.7	3.5	4.4	3.8	3.4	4.5	3.8	3.4	4.5	3.8	3.3	4.4	3.7	3.3	4.3	3.6	3.3	185
190	4.1	3.6	3.5	4.3	3.7	3.4	4.4	3.7	3.4	4.4	3.7	3.3	4.3	3.6	3.3	4.2	3.6	3.2	190
195	4	3.6	3.5	4.2	3.6	3.4	4.3	3.7	3.4	4.3	3.6	3.3	4.2	3.6	3.3	4.1	3.5	3.2	195
200	3.9	3.5	3.5	4.1	3.6	3.4	4.2	3.6	3.4	4.2	3.6	3.3	4.1	3.5	3.3	4	3.5	3.2	200
205	3.8	3.5	3.5	4	3.5	3.4	4.1	3.6	3.4	4.1	3.5	3.3	4	3.5	3.3	3.9	3.4	3.2	205
210	3.7	3.4	3.5	3.9	3.5	3.4	4	3.5	3.4	4	3.5	3.3	3.9	3.4	3.3	3.9	3.4	3.2	210
215	3.6	3.4	3.5	3.8	3.5	3.4	3.9	3.5	3.4	3.9	3.4	3.3	3.9	3.4	3.3	3.8	3.3	3.2	215
220	3.5	3.4		3.7	3.4	3.4	3.8	3.4	3.4	3.8	3.4	3.3	3.8	3.3	3.3	3.7	3.3	3.2	220
225	3.4	3.4		3.6	3.4	3.4	3.7	3.4	3.4	3.7	3.4	3.3	3.7	3.3	3.3	3.7	3.3	3.2	225
230	3.3	3.4		3.5	3.4	3.4	3.6	3.4	3.4	3.7	3.3	3.3	3.6	3.3	3.3	3.6	3.2	3.2	230
235	3.3			3.5	3.4		3.6	3.4	3.4	3.6	3.3	3.3	3.6	3.3	3.3	3.5	3.2	3.2	235
240				3.4	3.4		3.5	3.4	3.4	3.5	3.3	3.3	3.5	3.2	3.3	3.5	3.2	3.2	240
245				3.3			3.5	3.4		3.5	3.3	3.3	3.5	3.2	3.3	3.3	3.2	3.2	245
250				3.2			3.4	3.4		3.4	3.3	3.3	3.4	3.2	3.3	3	3.2	3.2	250
255							3.3	3.4		3.4	3.3	3.3	3.1	3.2	3.3	2.7	3.2	3.2	255
260							3.2			3.3	3.3	3.3	2.7	3.2	3.3	2.3	3.2	3.2	260
265										3.3	3.3		2.3	3.2	3.2	1.9	3	3.2	265
270										3.1	3.3		2	2.8	2.7	1.6	2.6	2.9	270
275													1.7	2.4			2.2	2.3	275
280													1.4	1.9			1.8	1.8	280

t_242_06000_00_000

STERLING CRANE

Lifting capacities

TNZK



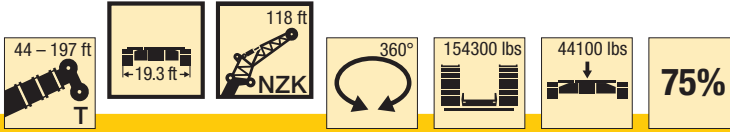
ft	44 ft			58 ft			72 ft			86 ft			100 ft			114 ft			ft
	118 ft			118 ft			118 ft			118 ft			118 ft			118 ft			
	0°	22.5°	45°	0°	22.5°	45°	0°	22.5°	45°	0°	22.5°	45°	0°	22.5°	45°	0°	22.5°	45°	
22	12.2																		22
24	12.6																		24
26	12.8			12															26
28	12.7			12.2			11.3												28
30	12.7			12.1			11.3												30
32	12.5			12			11.3			10.8									32
34	12.4			12			11.2			10.8									34
36	12.3			11.9			11.2			10.7			10.1						36
38	12.1			11.7			11.1			10.7			10.1			9.7			38
40	11.9			11.6			11			10.6			10			9.7			40
45	11.4			11.2			10.7			10.4			9.9			9.6			45
50	10.9			10.8			10.4			10.2			9.7			9.5			50
55	10.3			10.3			10			9.8			9.5			9.3			55
60	9.7			9.8			9.6			9.5			9.2			9.1			60
65	9.1	7.6		9.3			9.2			9.2			9			8.8			65
70	8.6	7.2		8.8			8.8			8.9			8.7			8.6			70
75	8.1	6.8		8.4	6.9		8.4			8.5			8.4			8.3			75
80	7.6	6.5		7.9	6.5		8	6.5		8.2	6.5		8.1			8.1			80
85	7.2	6.1		7.5	6.2		7.7	6.2		7.8	6.2		7.8	6.2		7.8	6.2		85
90	6.8	5.8		7.1	5.9		7.3	6		7.5	6		7.5	6		7.6	6		90
95	6.4	5.6		6.8	5.7		7	5.7		7.2	5.8		7.2	5.8		7.3	5.8		95
100	6.1	5.3	4.5	6.4	5.4		6.7	5.5		6.9	5.6		6.9	5.6		7	5.6		100
105	5.7	5.1	4.4	6.1	5.2	4.4	6.4	5.3	4.4	6.6	5.4		6.7	5.4		6.8	5.4		105
110	5.4	4.8	4.2	5.8	5	4.3	6.1	5.1	4.3	6.3	5.2		6.4	5.2		6.6	5.2		110
115	5.1	4.6	4.1	5.5	4.8	4.2	5.8	4.9	4.2	6.1	5	4.2	6.2	5	4.2	6.3	5.1		115
120	4.8	4.4	4	5.3	4.6	4	5.6	4.7	4.1	5.8	4.9	4.1	6	4.9	4.1	6.1	4.9	4	120
125	4.5	4.3	3.9	5	4.5	4	5.3	4.6	4	5.6	4.7	4	5.8	4.7	4	5.9	4.8	4	125
130	4.3	4.1	3.8	4.8	4.3	3.8	5.1	4.4	3.9	5.4	4.5	3.9	5.5	4.6	3.9	5.7	4.7	3.9	130
135	4.1	4	3.7	4.5	4.2	3.8	4.9	4.3	3.8	5.2	4.4	3.8	5.3	4.5	3.8	5.5	4.5	3.8	135
140	3.8	3.9	3.7	4.3	4	3.7	4.7	4.2	3.7	5	4.3	3.8	5.2	4.3	3.7	5.3	4.4	3.8	140
145	3.6	3.8	3.7	4.1	3.9	3.7	4.5	4	3.7	4.8	4.2	3.7	5	4.2	3.7	5.2	4.3	3.7	145
150	3.5	3.7		3.9	3.8	3.7	4.3	4	3.6	4.6	4	3.7	4.8	4.1	3.6	5	4.2	3.6	150
155				3.7	3.7		4.1	3.9	3.6	4.5	3.9	3.6	4.7	4	3.6	4.8	4.1	3.6	155
160				3.5	3.7		3.9	3.8	3.6	4.3	3.9	3.6	4.5	3.9	3.6	4.7	4	3.6	160
165				3.4	3.7		3.8	3.7	3.6	4.1	3.8	3.6	4.4	3.8	3.6	4.5	3.9	3.5	165
170							3.6	3.6		3.9	3.7	3.6	4.2	3.8	3.6	4.4	3.8	3.5	170
175							3.5	3.6		3.8	3.6	3.6	4.1	3.7	3.6	4.3	3.7	3.5	175
180							3.4			3.7	3.6	3.6	3.9	3.6	3.6	4.2	3.7	3.5	180
185										3.5	3.6		3.8	3.6	3.6	4	3.6	3.5	185
190										3.4	3.6		3.7	3.6	3.6	3.9	3.6	3.5	190
195										3.3			3.6	3.6		3.8	3.5	3.5	195
200													3.4	3.6		3.7	3.5	3.5	200
205													3.4			3.6	3.5	3.5	205
210													3.3			3.5	3.5		210
215																3.4	3.5		215
220																3.3	3.5		220

t_242_06010_00_000

STERLING CRANE

Lifting capacities

TNZK



ft	128 ft			142 ft			156 ft			171 ft			185 ft			197 ft			ft
	118 ft			118 ft			118 ft			118 ft			118 ft			118 ft			
	0°	22.5°	45°	0°	22.5°	45°	0°	22.5°	45°	0°	22.5°	45°	0°	22.5°	45°	0°	22.5°	45°	
45	9.1			9.5															45
50	9			9.4															50
55	8.9			9.3			8.9			8.2									55
60	8.8			9.2			8.8			8.1			7.4						60
65	8.6			9			8.7			8.1			7.3			6.7			65
70	8.4			8.8			8.5			8			7.2			6.6			70
75	8.1			8.6			8.3			7.8			7.1			6.6			75
80	7.9			8.3			8.1			7.6			7			6.5			80
85	7.7			8.1			7.9			7.5			6.9			6.4			85
90	7.5			7.9			7.7			7.3			6.8			6.3			90
95	7.2	5.7		7.7	5.9		7.5			7.1			6.7			6.2			95
100	7	5.6		7.4	5.8		7.3	5.7		7			6.5			6.1			100
105	6.8	5.4		7.2	5.6		7.1	5.5		6.8	5.4		6.4			6			105
110	6.6	5.2		7	5.4		6.9	5.4		6.6	5.2		6.2	5		5.9	4.8		110
115	6.3	5.1		6.7	5.3		6.7	5.2		6.4	5.1		6.1	4.9		5.7	4.7		115
120	6.2	4.9		6.5	5.1		6.5	5.1		6.3	5		5.9	4.8		5.6	4.6		120
125	6	4.8	3.9	6.3	5	4	6.3	4.9	4	6.1	4.9		5.8	4.7		5.5	4.5		125
130	5.8	4.7	3.9	6.1	4.9	3.9	6.1	4.8	3.9	5.9	4.7		5.7	4.6		5.4	4.4		130
135	5.6	4.6	3.8	5.9	4.7	3.9	6	4.7	3.8	5.8	4.6	3.8	5.5	4.5		5.3	4.3		135
140	5.4	4.4	3.7	5.8	4.6	3.8	5.8	4.6	3.8	5.6	4.5	3.7	5.4	4.4	3.6	5.2	4.2		140
145	5.2	4.3	3.7	5.6	4.5	3.7	5.6	4.5	3.7	5.5	4.4	3.7	5.3	4.3	3.6	5.1	4.2	3.5	145
150	5.1	4.2	3.6	5.4	4.4	3.7	5.5	4.4	3.7	5.3	4.3	3.6	5.2	4.2	3.5	5	4.1	3.5	150
155	4.9	4.1	3.6	5.2	4.3	3.6	5.3	4.3	3.6	5.2	4.2	3.6	5	4.1	3.5	4.9	4	3.4	155
160	4.8	4	3.5	5.1	4.2	3.6	5.2	4.2	3.6	5.1	4.1	3.5	4.9	4	3.4	4.7	3.9	3.4	160
165	4.7	3.9	3.5	4.9	4.1	3.5	5	4.1	3.5	5	4.1	3.5	4.8	4	3.4	4.7	3.9	3.4	165
170	4.5	3.9	3.5	4.8	4	3.5	4.9	4	3.5	4.8	4	3.4	4.7	3.9	3.4	4.6	3.8	3.3	170
175	4.4	3.8	3.5	4.7	3.9	3.5	4.7	3.9	3.5	4.7	3.9	3.4	4.6	3.8	3.4	4.5	3.7	3.3	175
180	4.3	3.7	3.5	4.5	3.8	3.5	4.6	3.9	3.4	4.6	3.8	3.4	4.5	3.8	3.3	4.4	3.7	3.3	180
185	4.2	3.7	3.5	4.4	3.8	3.4	4.5	3.8	3.4	4.5	3.8	3.3	4.4	3.7	3.3	4.3	3.6	3.3	185
190	4.1	3.6	3.5	4.3	3.7	3.4	4.4	3.7	3.4	4.4	3.7	3.3	4.3	3.6	3.3	4.2	3.6	3.2	190
195	4	3.6	3.5	4.2	3.6	3.4	4.3	3.7	3.4	4.3	3.6	3.3	4.2	3.6	3.3	4.1	3.5	3.2	195
200	3.9	3.5	3.5	4.1	3.6	3.4	4.2	3.6	3.4	4.2	3.6	3.3	4.1	3.5	3.3	4	3.5	3.2	200
205	3.8	3.5	3.5	4	3.5	3.4	4.1	3.6	3.4	4.1	3.5	3.3	4	3.5	3.3	3.8	3.4	3.2	205
210	3.7	3.4	3.5	3.9	3.5	3.4	3.9	3.5	3.4	3.9	3.5	3.3	3.9	3.4	3.3	3.5	3.4	3.2	210
215	3.6	3.4	3.5	3.8	3.5	3.4	3.9	3.5	3.4	3.8	3.4	3.3	3.5	3.4	3.3	3	3.3	3.2	215
220	3.5	3.4		3.7	3.4	3.4	3.8	3.4	3.4	3.8	3.4	3.3	3	3.3	3.3	2.6	3.3	3.2	220
225	3.4	3.4		3.6	3.4	3.4	3.7	3.4	3.4	3.7	3.4	3.3	2.6	3.3	3.3	2.2	3.3	3.2	225
230	3.3	3.4		3.5	3.4	3.4	3.6	3.4	3.4	3.3	3.3	3.3	2.1	3.3	3.3	1.7	3.2	3.2	230
235	3.3			3.4	3.4		3.5	3.4	3.4	2.9	3.3	3.3	1.7	3.2	3.3		2.9	3.2	235
240				3.3	3.4		3.4	3.4	3.4	2.5	3.3	3.3		2.8	3.3		2.5	3.2	240
245				3.3			3.1	3.4		2.2	3.2	3.3		2.3	3		2.1	2.9	245
250				3.2			2.8	3.3		1.8	2.8	3		1.9	2.4		1.6	2.4	250
255							2.5	3		1.5	2.3	2.4		1.3	1.9			1.9	255
260							2.2				1.9	1.7							260
265											1.5								265

t_242_06010_00_000