

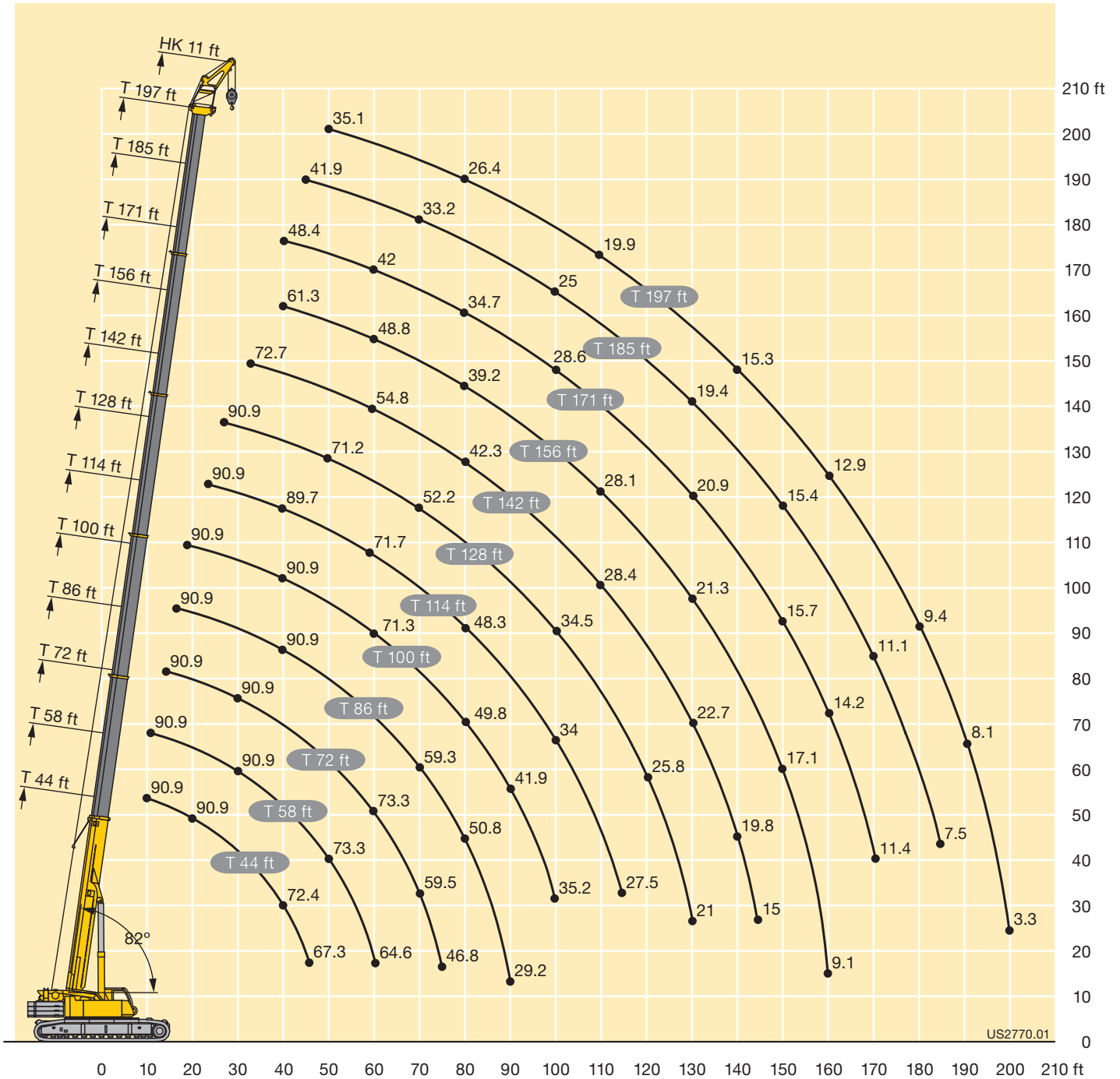


## LIFTING CHARTS - Crawler Cranes

### LIEBHERR MODEL LTR 1220 - 250 TON CAPACITY

#### Lifting heights

THK



US2770.01

# STERLING CRANE

## Lifting capacities

THK

	44 ft	58 ft	72 ft	86 ft	100 ft	114 ft	128 ft	142 ft	156 ft	171 ft	185 ft	197 ft	
	11 ft												
10	90.9												10
11	90.9	90.9											11
12	90.9	90.9											12
13	90.9	90.9											13
14	90.9	90.9	90.9										14
15	90.9	90.9	90.9										15
16	90.9	90.9	90.9	90.9									16
17	90.9	90.9	90.9	90.9									17
18	90.9	90.9	90.9	90.9									18
19	90.9	90.9	90.9	90.9	90.9								19
20	90.9	90.9	90.9	90.9	90.9								20
22	90.9	90.9	90.9	90.9	90.9								22
24	90.9	90.9	90.9	90.9	90.9	90.9							24
26	90.9	90.9	90.9	90.9	90.9	90.9	90.9						26
28	90.9	90.9	90.9	90.9	90.9	90.9	90.9	90.9					28
30	90.9	90.9	90.9	90.9	90.9	90.9	90.9	90.9					30
32	89.3	90.9	90.9	90.9	90.9	90.9	90.7	72.7					32
34	84.1	90.9	90.9	90.9	90.9	90.9	90.1	78.4					34
36	79	90.9	90.9	90.9	90.9	90.9	88.9	76.2					36
38	74.6	90.9	90.9	90.9	90.9	90.9	86.9	74.1					38
40	72.4	90	90.9	90.9	90.9	89.7	84	72.1	61.3	48.4			40
45	67.3	80.7	90.9	90.9	90.9	83.8	77	67.2	58.1	49.9	41.9		45
50		73.3	88.4	90.7	89.5	79.5	71.2	62.7	54.9	47.1	40.2	35.1	50
55		69.4	80.2	82	80.5	75.7	65.8	58.7	51.7	44.4	38.4	33.6	55
60		64.6	73.3	72.9	71.3	71.7	60.8	54.8	48.8	42	36.6	32	60
65			66	65.2	65.8	65.1	56.1	51.2	46.1	39.9	34.8	30.6	65
70			59.5	59.3	60.3	58.7	52.2	47.8	43.6	38.1	33.2	29.1	70
75			46.8	55.6	54.7	53.1	48.4	44.8	41.3	36.4	31.6	27.7	75
80				50.8	49.8	48.3	45.1	42.3	39.2	34.7	30.1	26.4	80
85				46.5	45.6	44	41.9	40.3	37.1	33	28.7	25.2	85
90				29.2	41.9	40.3	38.7	38	35.2	31.4	27.4	24	90
95					38.5	37	35.9	35.8	33.3	30	26.2	22.9	95
100					35.2	34	34.5	33.5	31.5	28.6	25	21.8	100
105						31.3	32.4	30.8	29.8	27.4	24	20.8	105
110						30.1	30	28.4	28.1	26.2	22.9	19.9	110
115						27.5	27.7	26.8	26.6	25.1	22	19	115
120							25.8	25.1	24.9	23.9	21.1	18.1	120
125							23.9	23.6	23	22.6	20.2	17.4	125
130							21	22.7	21.3	20.9	19.4	16.6	130
135								21.2	20.2	19.8	18.6	15.9	135
140								19.8	19.1	18.3	17.8	15.3	140
145								15	17.8	16.9	16.7	14.6	145
150									17.1	15.7	15.4	14	150
155									15.7	15	14.3	13.4	155
160									9.1	14.2	13.2	12.9	160
165										13.2	12.1	12.1	165
170										11.4	11.1	11.1	170
175											10.2	10.2	175
180											9.5	9.4	180
185											7.5	8.8	185
190												8.1	190
195												7.3	195
200												3.3	200

t\_242\_07100\_00\_000

# STERLING CRANE

## Lifting capacities

THK

	44 ft	58 ft	72 ft	86 ft	100 ft	114 ft	128 ft	142 ft	156 ft	171 ft	185 ft	197 ft	
	11 ft												
10	90.9												10
11	90.9	90.9											11
12	90.9	90.9											12
13	90.9	90.9											13
14	90.9	90.9	90.9										14
15	90.9	90.9	90.9										15
16	90.9	90.9	90.9	90.9									16
17	90.9	90.9	90.9	90.9									17
18	90.9	90.9	90.9	90.9									18
19	90.9	90.9	90.9	90.9	90.9								19
20	90.9	90.9	90.9	90.9	90.9								20
22	90.9	90.9	90.9	90.9	90.9								22
24	90.9	90.9	90.9	90.9	90.9	90.9							24
26	90.9	90.9	90.9	90.9	90.9	90.9	90.9						26
28	90.9	90.9	90.9	90.9	90.9	90.9	90.9	90.9					28
30	90.9	90.9	90.9	90.9	90.9	90.9	90.9	90.9					30
32	89.3	90.9	90.9	90.9	90.9	90.9	90.7	72.7					32
34	84.1	90.9	90.9	90.9	90.9	90.9	90.1	78.4					34
36	79	90.9	90.9	90.9	90.9	90.9	88.9	76.2					36
38	74.6	90.9	90.9	90.9	90.9	90.9	86.9	74.1					38
40	72.4	90	90.9	90.9	90.9	89.7	84	72.1	61.3	48.4			40
45	67.3	80.7	90.7	89.8	88.7	83.8	77	67.2	58.1	49.9	41.9		45
50		73.3	78.8	78.1	76.8	77.3	71.1	62.7	54.9	47.1	40.2	35.1	50
55		68.4	68.7	68.4	69.4	68	64.9	58.7	51.7	44.4	38.4	33.6	55
60		60.2	60.6	62.1	61.3	59.9	58.3	54.8	48.8	42	36.6	32	60
65			55.4	55.3	54.6	53.1	51.7	50.5	46.1	39.9	34.8	30.6	65
70			49.8	49.7	48.9	47.6	47.1	46.3	43.6	38.1	33.2	29.1	70
75			45	45	44.1	42.8	43	42.4	41.2	36.4	31.6	27.7	75
80				40.8	40	38.9	39.7	38.3	38.2	34.7	30.1	26.4	80
85				37.3	36.5	36.7	36.1	35.6	34.6	33	28.7	25.2	85
90				29.2	33.4	34.3	33	32.5	32	31.4	27.4	24	90
95					30.8	31.6	30.2	30.1	29.6	29.1	26.2	22.9	95
100					29.8	29.1	28.1	28.3	27.7	26.7	25	21.8	100
105						26.9	25.9	26.1	25.6	24.9	23.9	20.8	105
110						25	24.7	24.1	23.6	22.9	22.6	19.9	110
115						23.2	23.6	22.3	22.3	21.4	20.8	19	115
120							21.9	21	20.6	20	19	18.1	120
125							20.4	19.4	19	18.4	17.4	17.2	125
130							19	18.5	17.5	17	16	15.9	130
135								17.5	16.3	15.6	14.6	14.6	135
140								16.2	15.3	14.4	13.4	13.4	140
145								15	14.1	13.2	12.2	12.2	145
150									13.1	12.2	11.1	11.1	150
155									12.1	11.2	10.1	10.1	155
160									9.1	10.3	9.2	9.2	160
165										9.4	8.4	8.3	165
170										8.7	7.5	7.5	170
175											6.8	6.8	175
180											6.1	6	180
185											5.4	5.4	185
190												4.7	190
195												4.1	195
200												3.3	200

t\_242\_07110\_00\_000

# STERLING CRANE

## Lifting capacities

THK

ft	11 ft												ft
	44 ft	58 ft	72 ft	86 ft	100 ft	114 ft	128 ft	142 ft	156 ft	171 ft	185 ft	197 ft	
36		90.3		84.3									36
38	74.6	87.7	84.9	83.1	73.5								38
40	72.4	81.5	80.9	78.6	70.7								40
45	67.3	69.9	70.1	69.5	66.9	59.7							45
50		60.1	61.9	61.8	61.1	58.8	54.2	47.2					50
55		53.2	54.2	54.1	53.3	52.9	51.1	46.6	41.9				55
60		46.8	47.8	47.7	47	47.5	46.7	43.5	41.2	38.1	34.8		60
65			42.6	42.5	42.2	42.6	41.7	40.4	38.6	35.9	32.6	30.5	65
70			38.2	38.1	39.1	38.3	37.6	37.4	35.7	33.8	30.5	28.7	70
75			34.4	34.3	35.3	34.5	34.5	34.1	32.8	31.5	28.6	27	75
80				31.7	32	31.2	31.7	30.8	30.2	28.9	26.8	25.3	80
85				29.5	29.2	28.9	28.8	28.5	27.7	26.3	24.7	23.7	85
90				27	26.7	27	26.3	26.2	25.4	24	22.5	21.8	90
95					24.5	24.8	24.1	24	23.2	22	20.5	19.9	95
100					22.6	22.8	22.3	22	21.1	20.1	18.6	18.1	100
105						21	20.6	20.2	19.2	18.3	17	16.5	105
110						19.4	18.9	18.4	17.5	16.6	15.4	15	110
115						17.9	17.4	16.9	16	15.1	14	13.6	115
120							16	15.5	14.5	13.7	12.7	12.4	120
125							14.7	14.2	13.2	12.4	11.4	11.2	125
130							13.5	13	12	11.2	10.2	10.1	130
135								11.9	11	10.1	9.1	9.1	135
140								10.9	10	9.1	8.1	8.1	140
145								10	9	8.1	7.1	7.1	145
150									8.2	7.3	6.3	6.2	150
155									7.4	6.5	5.5	5.4	155
160									6.7	5.7	4.7	4.7	160
165										5	4	3.9	165
170										4.4	3.3	3.3	170
175											2.7	2.6	175

t\_242\_07110\_00\_000