



LIFTING CHARTS - Crawler Cranes

KOBELCO MODEL CKE2500-II - 275 TON CAPACITY

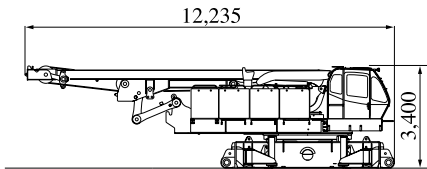
PARTS AND ATTACHMENTS

Dimensions: mm Weight: kg

Base Machine

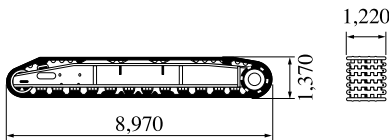
With trans-lifter, main and aux. winches (non-free fall) including wire rope and boom hoist winch including wire rope

Weight: 44,900 kg Width: 3,400 mm



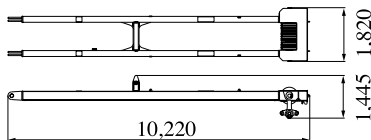
Crawler

Weight: 20,700 kg



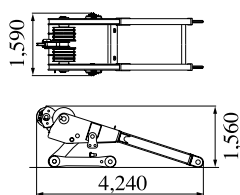
Mast

Weight: 2,870 kg

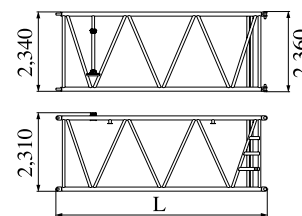


Gantry

Weight: 3,020 kg



Insert Boom

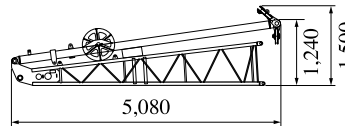


	L (mm)	Weight (kg)*
3.0m	3,175	890
6.1m	6,220	1,440
12.2m	12,320	2,540

*with boom guy cables

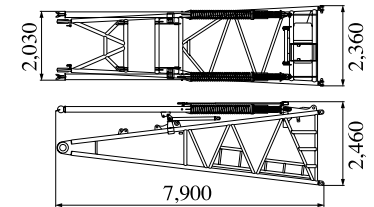
Jib Base with Strut (For Crane)

Weight: 510 kg Width: 1,040 mm



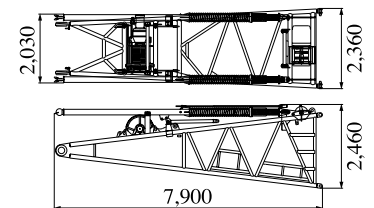
Boom Base

Weight: 4,665 kg



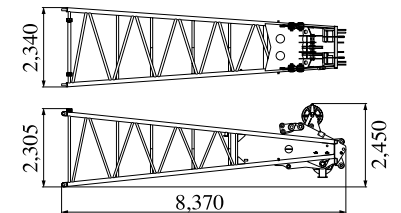
Boom Base (with Winch)

Weight: 6,810 kg



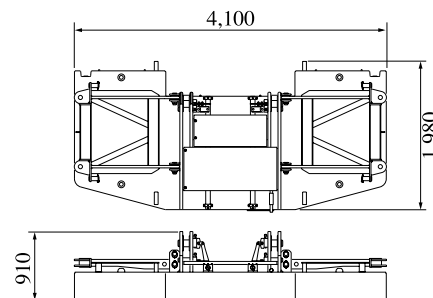
Boom Top

Weight: 3,720 kg (with boom guy cables)



Counterweight A

Weight: 11,040 kg

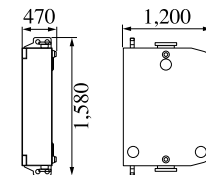


Counterweight B, C

Weight:

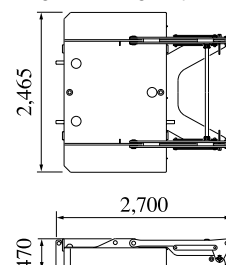
Counterweight B: 5,625 kg x 7 pieces

Counterweight C: 5,625 kg x 7 pieces



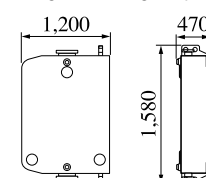
Carbodyweight A

Weight: 6,350 kg x 2 pieces



Carbodyweight B

Weight: 5,625 kg x 2 pieces

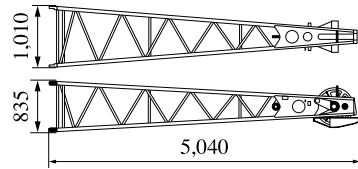


STERLING CRANE

Dimensions: mm Weight: kg

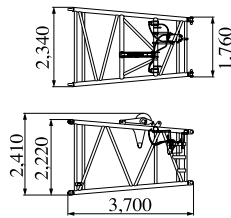
Jib Top (For Crane)

Weight: 315 kg



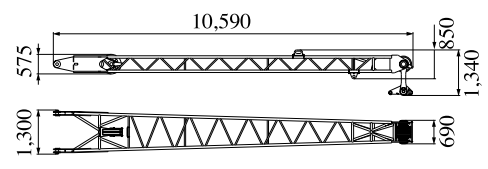
Luffing Tapered Boom

Weight: 1,190 kg



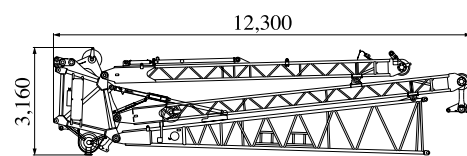
Front Strut (Luffing Jib)

Weight: 1,410 kg



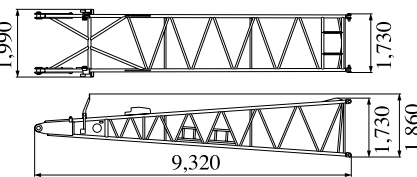
Travel Kit Assembly

Weight: 6,730 kg



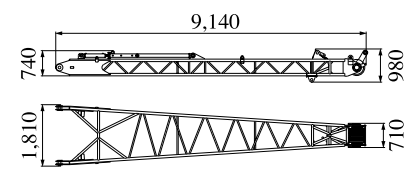
Luffing Jib Base

Weight: 1,470 kg



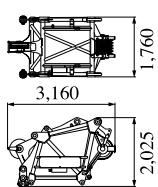
Rear Strut (Luffing Jib)

Weight: 1,510 kg



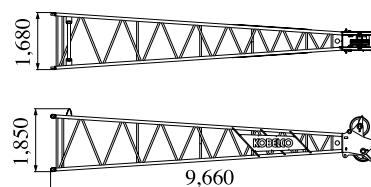
Luffing Boom Top

Weight: 2,085 kg



Luffing Jib Top

Weight: 1,400 kg



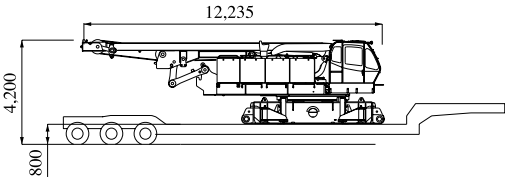
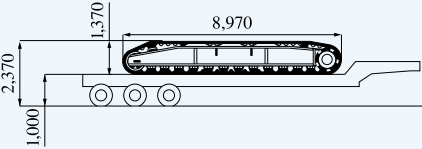
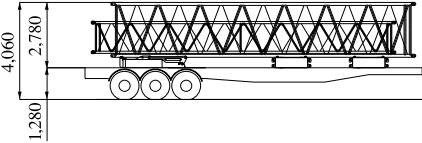
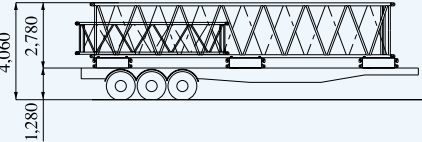
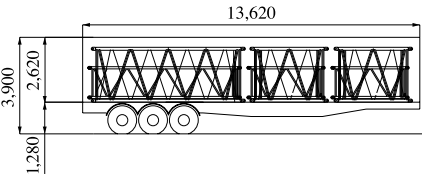
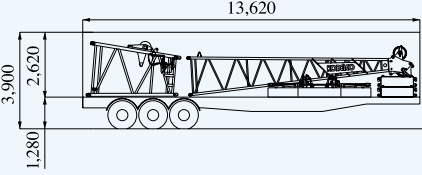
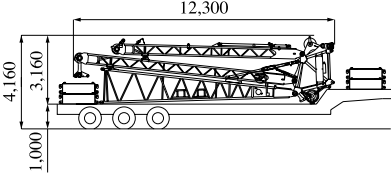
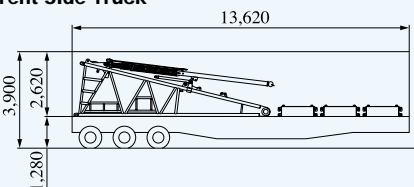
Other Attachments

Attachments	Weight	Dimensions (L x W x H)
3.0 m insert jib (for crane)	110 kg	3,130 mm x 1,020 mm x 840 mm
6.1 m insert jib (for crane)	190 kg	6,175 mm x 1,020 mm x 840 mm
Relay jib	400 kg (with guy cables)	3,170 mm x 1,670 mm x 1,690 mm
Tapered boom with idler sheave & link (for long)	1,170 kg	4,905 mm x 2,340 mm x 2,360 mm
3.0 m luffing insert jib	420 kg (with guy cables)	3,160 mm x 1,670 mm x 1,690 mm
6.1 m luffing insert jib	670 kg (with guy cables)	6,210 mm x 1,670 mm x 1,690 mm
12.2 m luffing insert jib	1,170 kg (with guy cables)	12,310 mm x 1,670 mm x 1,690 mm
Jib backstop (for luffing)	260 kg	3,580 mm x 250 mm x 280 mm (x 2 pieces)
Strut backstop (for luffing)	255 kg	3,390 mm x 210 mm dia. (x 2 pieces)
Auxiliary sheave (for crane)	290 kg	2,010 mm x 720 mm x 735 mm
Auxiliary sheave (for luffing)	380 kg	1,070 mm x 910 mm x 890 mm
Luffing jib drum	2,050 kg (with wire rope)	1,780 mm x 1,190 mm x 1,040 mm
250-ton hook	4,200 kg	2,310 mm x 1,620 mm x 720 mm
150-ton hook	2,300 kg	2,250 mm x 715 mm x 700 mm
70-ton hook	1,200 kg	1,825 mm x 380 mm x 700 mm
35-ton hook	900 kg	1,575 mm x 365 mm x 700 mm
Ball hook	450 kg	1,200 mm x 380 mm dia.

Note: Estimated weights may vary \pm 2%.

TRANSPORTATION PLAN

Luffing Boom 61.0 m + Luffing Jib 61.0 m

Configuration	Description	Total Weight
No.1 Low Loader 	Base Machine = With trans-lifter, main and aux. winches (non-free fall) including wire rope, boom hoist winch including wire rope	44.90 ton
No.2 Semi Loader 	Crawler = (2 x 20.7 ton)	41.40 ton
No.3 & No.4 Flat Bed Trailer 	Carbodyweight A x 1 = Counterweight (2 x 5.63 ton) = 12.2 m Insert Boom x 1 = 12.2 m Luffing Insert Jib x 1 = Total =	6.35 ton 11.26 ton 2.54 ton 1.17 ton <hr/> 21.32 ton
No.5 Flat Bed Trailer 	Counterweight (3 x 5.63 ton) = 12.2 m Insert Boom x 1 = 6.1 m Luffing Insert Jib x 1 = Total =	16.89 ton 2.54 ton 0.67 ton <hr/> 20.10 ton
No.6 Tent Side Truck 	3.0 m Insert Boom (2 x 0.89 ton) = 6.1 m Insert Boom x 1 = 6.1 m Luffing Insert Jib x 1 = 3.0 m Luffing Insert Jib x 1 = Relay Jib x 1 = Total =	1.78 ton 1.44 ton 0.67 ton 0.42 ton 0.40 ton <hr/> 4.71 ton
No.7 Tent Side Truck 	Luffing Jib Top x 1 = Luffing Tapered Boom x 1 = Counterweight (2 x 5.63 ton) = Counterweight A x 1 = Total =	1.40 ton 1.19 ton 11.26 ton 11.04 ton <hr/> 24.89 ton
No.8 Semi Loader 	Travel Kit Assembly = Counterweight (2 x 5.63 ton) = Carbodyweight B (2 x 5.63 ton) = Total =	6.73 ton 11.26 ton 11.26 ton <hr/> 29.25 ton
No.9 Tent Side Truck 	Boom Base x 1 = Counterweight (3 x 5.63 ton) = Total =	6.81 ton 16.89 ton <hr/> 23.70 ton

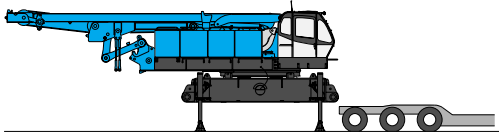
Note: Estimated weights may vary \pm 2%.

This transportation plan depends on specifications of your trailers/trucks and the areas or countries where you transport.

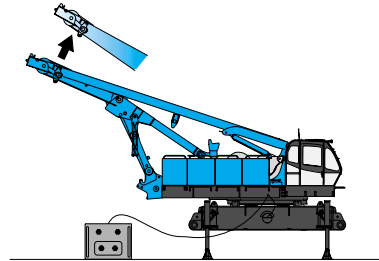
STERLING CRANE

SELF-REMOVAL DEVICE

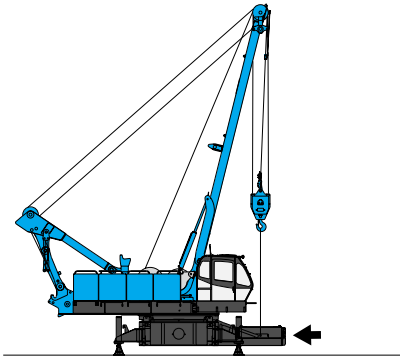
1



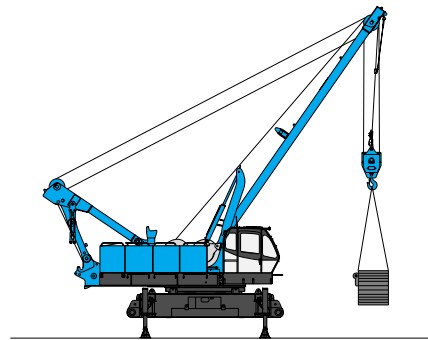
2



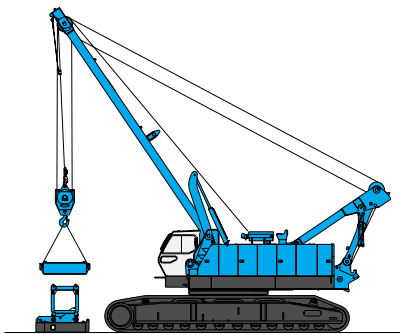
3



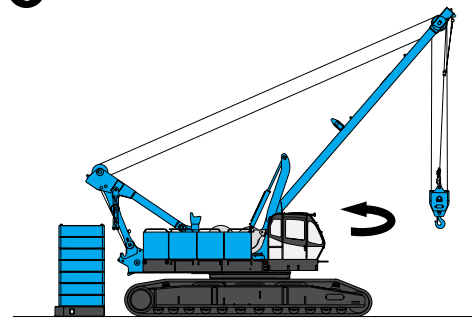
4



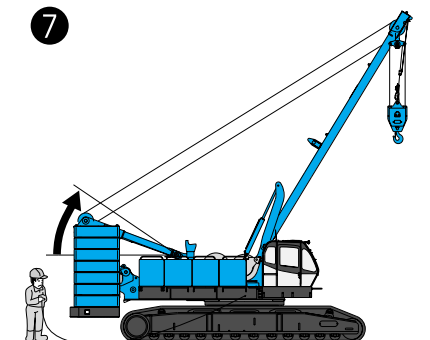
5



6



7



8

