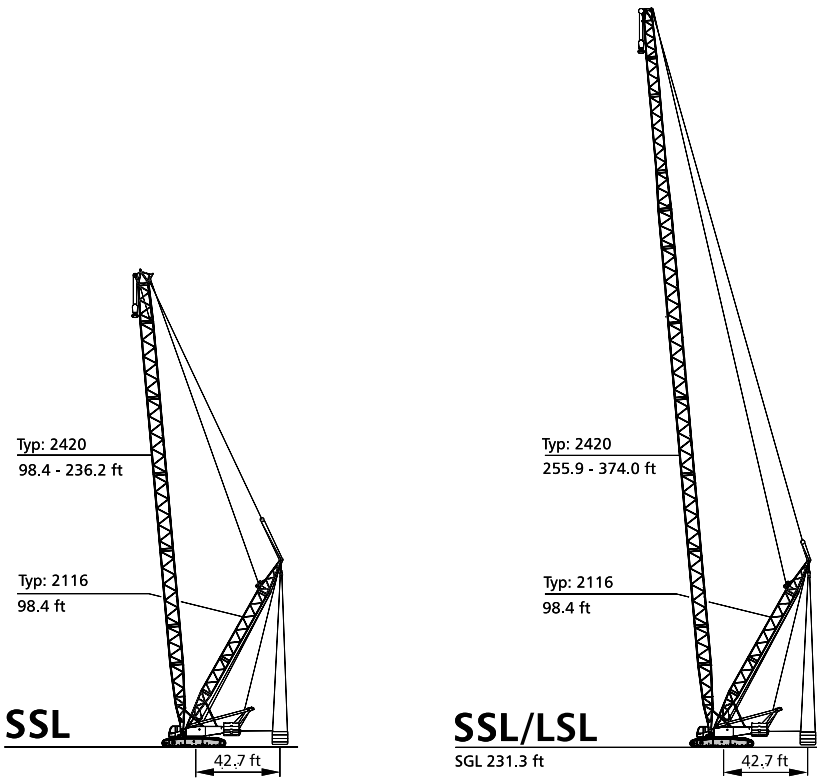
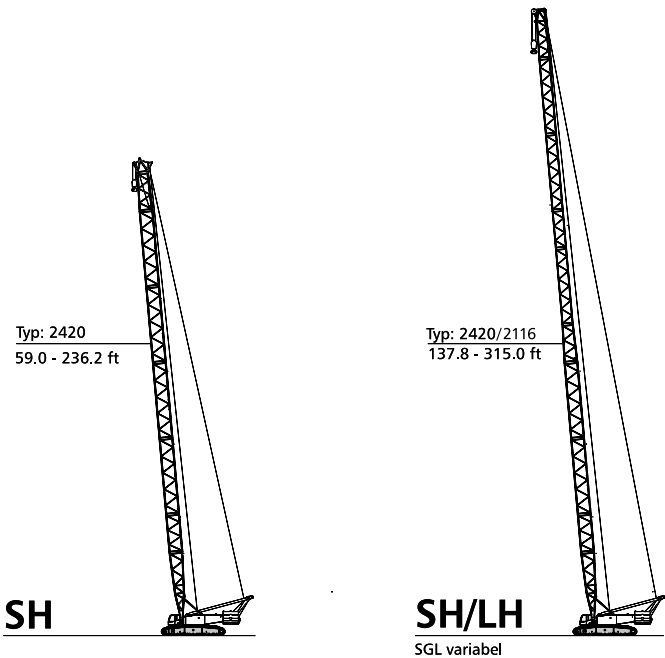




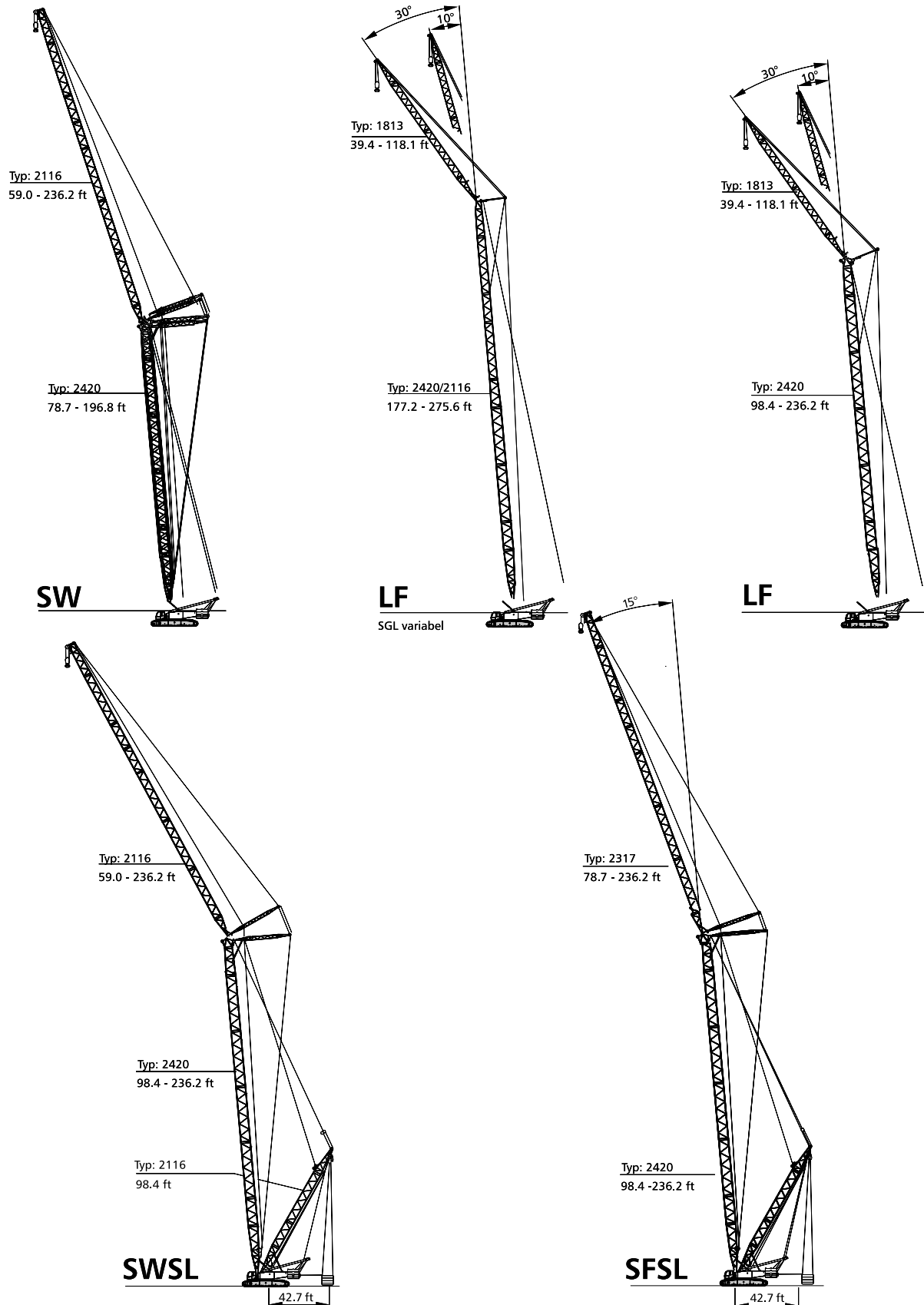
LIFTING CHARTS - Crawler Cranes

DEMAG MODEL CC 1800-1 - 330 TON CAPACITY

Boom combinations



Boom combinations



Specifications

Erection / lowering of the CC 1800-1 boom systems to the ground

Version	Main boom ft	Fly jib ft	Counterweight lb	Central ballast lb	Remarks
SH	59.0 – 236.2	–	264,600	66,000	
SH / LH	137.8 – 295.3 *315.0	– –	264,600 264,600	66,000 66,000	* Hook block on the ground
SW	78.7 – 196.8 **196.8 **196.8	59.0 – 236.2 98.4 – 118.1 137.8	264,600 264,600	66,000 66,000	Without add. sheave assembly on boom head * Hook block on the ground ** ONLY WITH ASSIST CRANE *** OR AUXILIARY EQUIPMENT
LF 10°, 30°	177.2 – 275.6	39.4 – 118.1	264,600	66,000	Without add. sheave assembly on boom head
	*255.9 *275.6 **275.6	118.1 78.7 118.1	264,600 264,600 264,600	66,000 66,000 66,000	* Hook block on the ground ** ONLY WITH ASSIST CRANE *** OR AUXILIARY EQUIPMENT
LF 10°, 30°	98.4 – 236.2 *236.2	39.4 – 118.1 118.1	264,600 264,600	66,000 66,000	Without add. sheave assembly on boom head * Hook block on the ground
SSL	98.4 – 236.2	–	–	–	with SL-counterweight
SSL / LSL	255.9 – 374.0	–	–	–	with SL-counterweight
SWSL / SFSL	98.4 – 236.2	59.0 – 236.2	–	–	with SL-counterweight

Remarks

All versions without runner!

Further details on request!

Erection over idler wheel for all versions!