



## LIFTING CHARTS - Crawler Cranes

### DEMAG MODEL CC2400-1 - 440 TON CAPACITY

#### SPECIFICATIONS

##### WEIGHTS

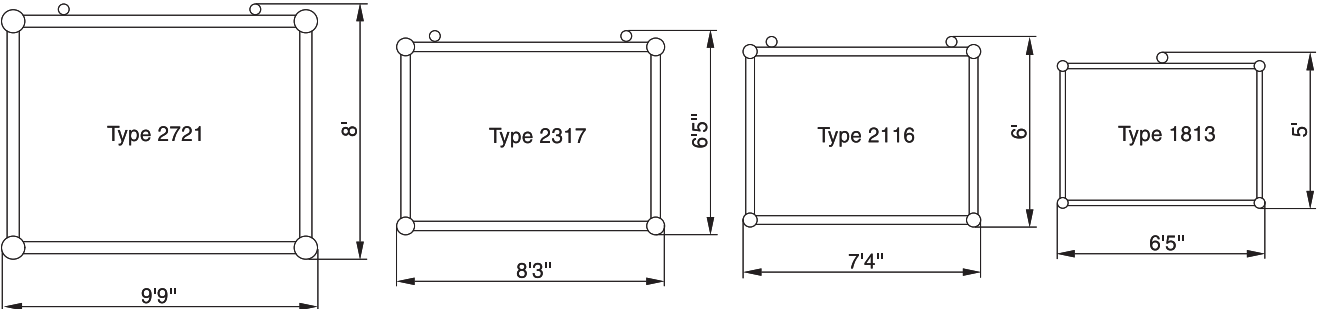
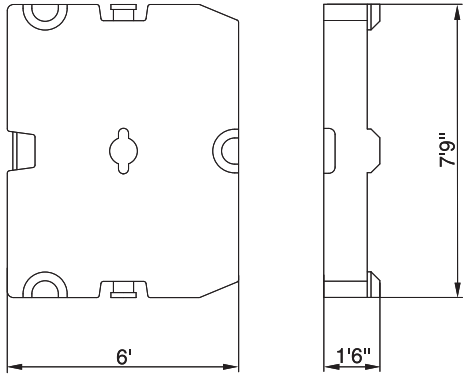
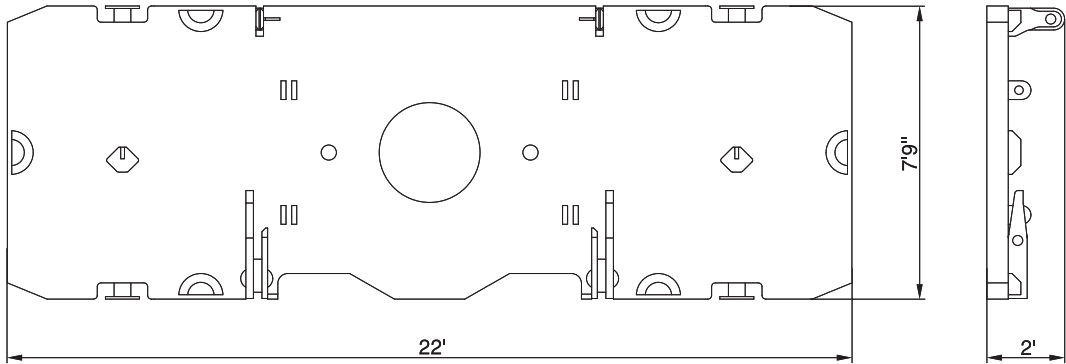
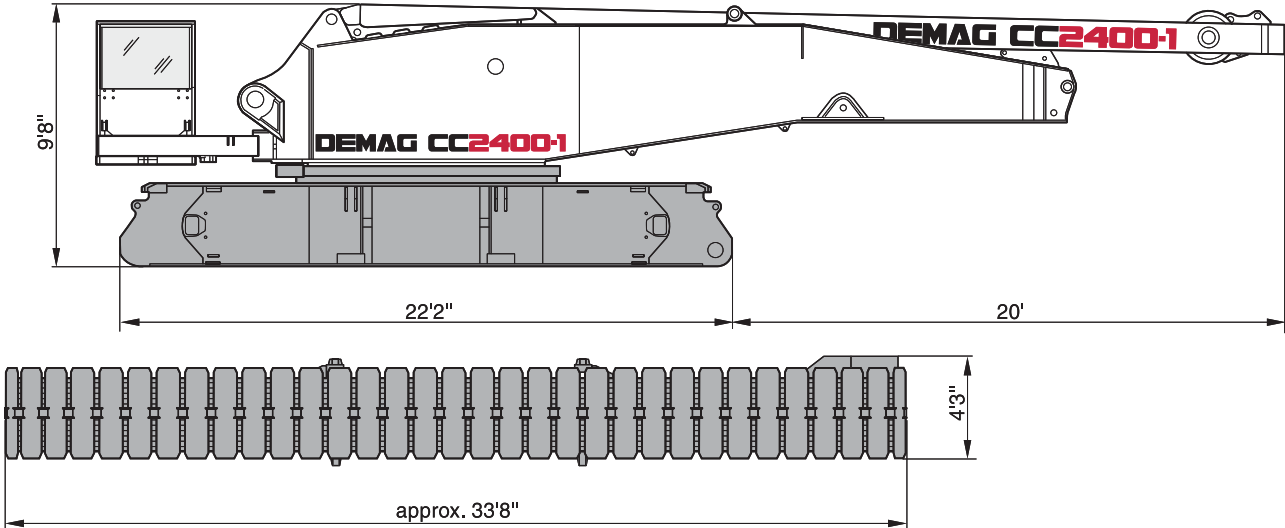
Total weight incl. 220,463 lb counterweight, 78'9" boom and hook block	513,678 lb
Superstructure (with 3 winches, A-frame, carbody, self-assembly equipment)	131,196 lb
Superstructure (with 3 winches, A-frame and quick-connection)	87,304 lb
Carbody with jacks and quick-connection	48,282 lb
Crawlers with track shoes (3'11")	2 x 51,589 lb
Counterweight	220,463 lb

##### GROUND PRESSURE

Ground pressure (based on total weight of 513,678 lb)	18.8 psi
---	----------

# STERLING CRANE

## SPECIFICATIONS



# STERLING CRANE

## KEY



Track



Counterweight + central ballast (ZB)



Superlift counterweight



Superlift radius



Load radius



Main boom



Fly jib

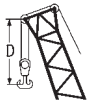


Main boom angle



Fly jib angle

„D“



S: heavy

L: light

H: Main boom

W: Luffing fly jib

F: Fixed fly jib

SL: Superlift

SGL: Heavy base length