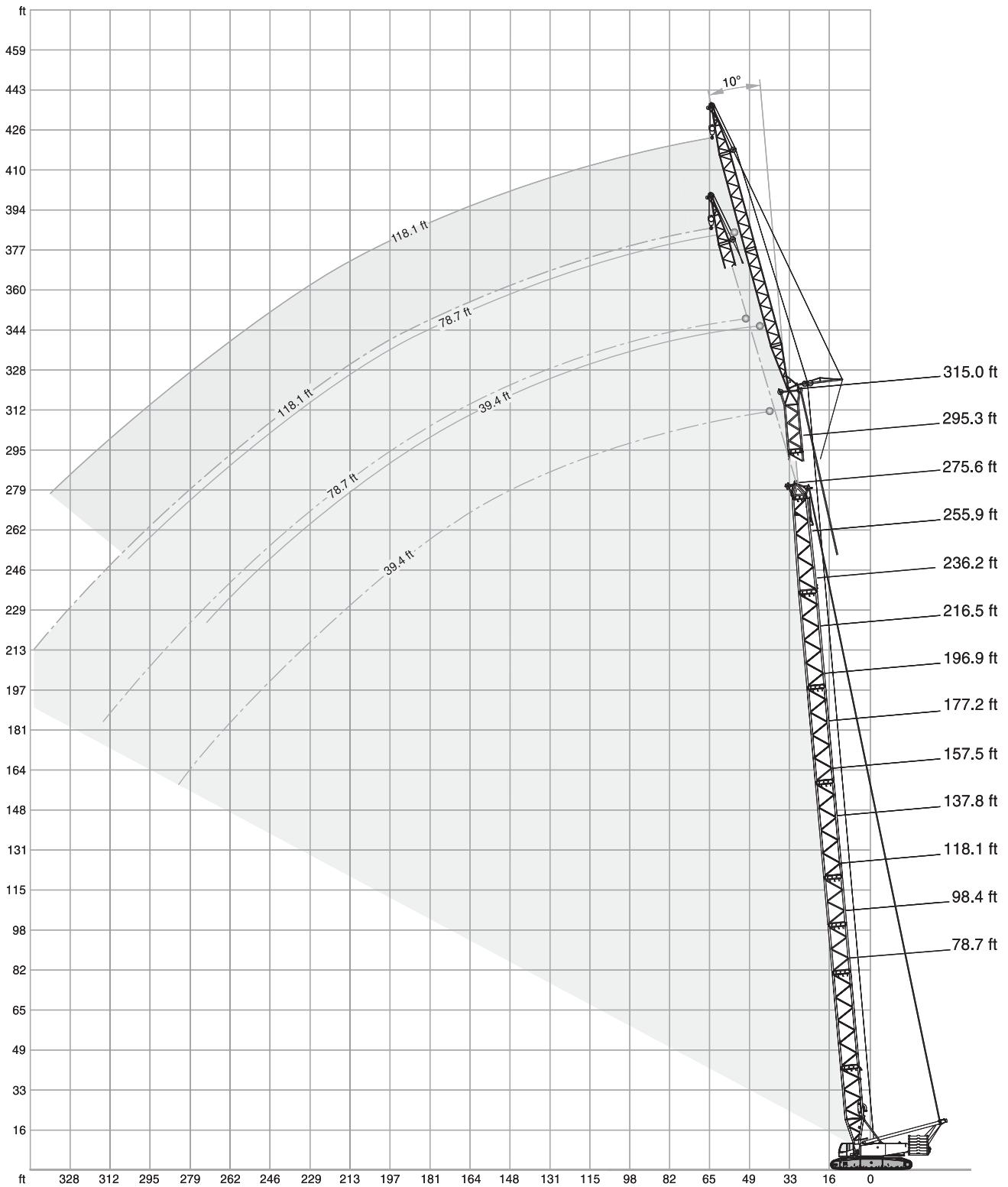




LIFTING CHARTS - Crawler Cranes

DEMAG MODEL CC2400-1 - 440 TON CAPACITY

SH + LF2, SH/LH + LF2



STERLING CRANE

SH + LF2

352,700 lb + 88,200 lb ZB 39.4 - 118.1 ft 23'9" 360° ISO

ft	78.7 ft						98.4 ft					
	39.4 ft		78.7 ft		118.1 ft		39.4 ft		78.7 ft		118.1 ft	
	10°	15°	10°	30°	10°	30°	10°	15°	10°	30°	10°	30°
	1,000 lb											
29.5	-	235.9	-	-	-	-	257.9	235.9	-	-	-	-
32.8	257.9	218.3	-	-	-	-	257.9	229.3	-	-	-	-
36.1	251.3	202.8	142.2	-	-	-	257.9	215.0	-	-	-	-
39.4	231.5	189.6	142.2	-	-	-	253.5	201.7	142.2	-	-	-
45.9	201.7	167.6	131.2	-	84.2	-	220.5	180.8	137.8	-	-	-
49.2	189.6	158.7	122.4	-	84.2	-	208.3	172.0	130.1	-	83.8	-
52.5	178.6	151.0	114.6	-	82.9	-	197.3	163.1	122.4	-	82.9	-
59.1	159.8	136.7	102.7	-	80.7	-	177.5	148.8	110.2	-	81.4	-
62.3	152.1	131.2	97.4	52.0	78.5	-	168.7	143.3	104.9	52.9	80.7	-
65.6	144.4	125.7	92.6	50.3	74.5	-	160.9	137.8	100.1	51.1	78.5	-
72.2	132.3	115.7	84.2	47.0	67.5	-	147.7	126.8	91.3	48.1	71.4	-
78.7	121.3	108.0	77.2	44.1	61.5	-	136.7	119.0	84.0	45.4	65.5	-
85.3	113.5	101.2	71.2	41.4	56.7	31.3	126.8	111.3	77.8	43.0	60.4	31.7
91.9	106.0	95.2	66.1	39.2	52.2	29.3	114.6	105.2	72.3	41.0	56.0	30.0
98.4	99.4	89.9	61.7	37.3	48.5	27.6	105.2	99.6	67.7	39.0	52.0	28.2
111.5	89.3	82.0	54.5	34.0	42.3	24.7	88.2	88.6	59.7	35.7	45.6	25.6
124.7	-	-	48.7	31.5	37.5	22.3	75.4	75.6	53.6	33.1	40.6	23.1
131.2	-	-	46.4	30.5	35.5	21.3	-	70.1	51.0	32.1	38.5	22.2
137.8	-	-	44.1	29.5	33.5	20.3	-	-	48.5	31.1	36.4	21.2
144.4	-	-	42.1	-	31.9	19.5	-	-	46.5	30.3	34.6	20.4
150.9	-	-	-	-	30.2	18.7	-	-	44.5	29.5	32.8	19.6
164.0	-	-	-	-	27.6	17.6	-	-	41.2	-	30.2	18.3
177.2	-	-	-	-	25.4	16.5	-	-	-	-	27.8	17.2
190.3	-	-	-	-	-	-	-	-	-	-	25.8	16.5
203.4	-	-	-	-	-	-	-	-	-	-	24.0	-

ft	118.1 ft						137.8 ft					
	39.4 ft		78.7 ft		118.1 ft		39.4 ft		78.7 ft		118.1 ft	
	10°	15°	10°	30°	10°	30°	10°	15°	10°	30°	10°	30°
	1,000 lb											
29.5	257.9	-	-	-	-	-	-	-	-	-	-	-
32.8	257.9	238.1	-	-	-	-	257.9	-	-	-	-	-
36.1	257.9	224.9	-	-	-	-	257.9	231.5	-	-	-	-
39.4	257.9	212.7	-	-	140.0	-	257.9	220.5	-	-	-	-
42.7	253.5	201.7	-	111.3	140.0	-	257.9	210.5	-	113.5	138.9	-
45.9	238.1	191.8	-	108.7	138.9	-	255.7	200.6	-	110.2	137.8	-
49.2	224.9	181.9	-	105.4	136.7	82.5	240.3	191.8	-	107.6	137.8	-
52.5	213.8	174.2	-	102.1	130.1	82.5	229.3	184.1	-	104.7	135.6	81.8
59.1	194.0	159.8	-	96.3	116.8	81.6	207.2	169.8	-	99.2	123.5	81.6
65.6	176.4	147.7	-	91.5	106.7	80.2	179.7	157.6	-	94.4	112.4	80.5
72.2	158.7	137.8	-	87.1	97.9	75.2	156.5	146.6	-	90.2	103.8	78.7
78.7	140.0	129.0	-	83.1	90.2	69.2	137.8	137.8	-	86.4	96.1	72.5
85.3	125.7	121.3	-	79.6	83.8	63.9	123.5	123.5	-	82.9	89.3	67.2
91.9	112.4	113.5	-	76.5	78.0	59.3	110.2	111.3	-	79.8	83.6	62.6
98.4	102.7	103.4	-	73.9	73.2	55.3	100.3	101.2	-	77.2	78.3	58.6
111.5	85.8	86.2	-	69.2	64.8	48.7	83.3	84.0	-	72.3	69.7	51.8
124.7	72.8	73.2	-	65.9	58.2	43.4	70.3	71.0	-	68.6	62.8	46.3
137.8	62.6	62.8	-	-	52.9	39.0	60.2	60.6	-	61.5	57.1	41.7
144.4	58.4	58.6	-	-	50.7	37.3	56.1	56.4	-	-	54.7	39.8
150.9	-	-	-	-	48.5	35.5	52.0	52.2	-	-	52.2	37.9
164.0	-	-	-	-	44.8	32.4	45.2	45.4	-	-	48.5	34.8
177.2	-	-	-	-	41.9	30.0	-	-	-	-	43.0	32.0
190.3	-	-	-	-	-	27.8	-	-	-	-	37.9	29.8
203.4	-	-	-	-	-	26.0	-	-	-	-	-	27.8
216.5	-	-	-	-	-	24.5	-	-	-	-	-	26.0
229.7	-	-	-	-	-	-	-	-	-	-	-	24.7
242.8	-	-	-	-	-	-	-	-	-	-	-	-

STERLING CRANE

SH + LF2

352,700 lb + 88,200 lb ZB 39.4 - 118.1 ft 23'9" 360° ISO

ft	157.5 ft						177.2 ft					
	39.4 ft	78.7 ft	118.1 ft	39.4 ft	78.7 ft	118.1 ft	39.4 ft	78.7 ft	118.1 ft	39.4 ft	78.7 ft	118.1 ft
	10°	15°	10°	30°	10°	30°	10°	15°	10°	30°	10°	30°
	1,000 lb											
32.8	257.9	-	-	-	-	-	-	-	-	-	-	-
36.1	257.9	229.3	-	-	-	-	257.9	-	-	-	-	-
39.4	257.9	227.1	-	-	-	-	257.9	233.7	-	-	-	-
42.7	257.9	218.3	133.4	-	-	-	257.9	224.9	-	-	-	-
45.9	257.9	208.3	133.4	-	-	-	246.9	216.1	131.2	-	-	-
52.5	224.9	191.8	132.3	-	80.9	-	216.1	199.5	131.2	-	-	-
55.8	210.5	185.2	131.2	-	80.9	-	201.7	191.8	130.1	-	80.0	-
59.1	198.4	177.5	127.9	-	80.7	-	189.6	185.2	129.0	-	80.0	-
65.6	176.4	165.3	117.9	-	80.0	-	168.7	170.9	123.5	-	79.6	-
72.2	154.3	155.4	109.3	50.7	78.9	-	151.0	153.2	113.5	51.4	78.7	-
78.7	135.6	136.7	101.4	48.5	75.6	-	133.4	134.5	106.5	49.2	77.6	-
85.3	121.3	122.4	94.6	46.3	70.3	-	119.0	120.2	99.4	47.2	73.2	-
91.9	108.7	109.6	88.6	44.5	65.7	31.1	106.5	107.6	93.3	45.2	68.6	31.3
98.4	98.1	99.0	83.3	42.8	61.5	29.5	95.9	96.8	88.0	43.7	64.4	30.0
111.5	81.1	81.8	74.3	39.7	54.5	27.1	78.7	79.6	78.7	40.6	57.1	27.6
124.7	68.1	68.6	67.0	37.0	48.9	25.1	65.7	66.4	70.3	38.1	51.4	25.6
137.8	57.8	58.2	61.1	34.8	44.3	23.4	55.3	56.0	60.0	35.9	46.5	23.8
150.9	49.6	49.8	53.6	32.8	40.3	21.8	46.7	47.2	51.4	34.0	42.5	22.3
164.0	42.3	42.8	46.5	31.3	37.0	20.5	39.5	39.9	44.3	32.4	39.0	20.9
177.2	36.4	36.6	40.6	30.0	34.2	19.2	33.5	33.7	37.9	30.9	36.2	19.8
190.3	-	-	35.3	29.1	31.7	18.3	28.2	28.7	32.6	29.8	33.5	18.7
203.4	-	-	30.6	-	29.5	17.4	-	-	28.0	28.9	30.9	17.9
216.5	-	-	26.7	-	27.8	16.8	-	-	24.0	-	26.7	17.2
229.7	-	-	-	-	25.6	16.1	-	-	20.5	-	23.1	16.5
242.8	-	-	-	-	22.5	-	-	-	-	-	20.1	16.1
255.9	-	-	-	-	-	-	-	-	-	-	17.2	-
269.0	-	-	-	-	-	-	-	-	-	-	14.6	-

STERLING CRANE

SH + LF2

352,700 lb + 88,200 lb ZB 39.4 - 118.1 ft 23'9" 360° ISO

ft	196.9 ft						216.5 ft					
	39.4 ft	78.7 ft	118.1 ft	39.4 ft	78.7 ft	118.1 ft	39.4 ft	78.7 ft	118.1 ft	39.4 ft	78.7 ft	118.1 ft
	10°	15°	10°	30°	10°	30°	10°	15°	10°	30°	10°	30°
	1,000 lb											
36.1	257.9	-	-	-	-	-	-	-	-	-	-	-
39.4	257.9	229.3	-	-	-	-	257.9	-	-	-	-	-
42.7	255.7	229.3	-	-	-	-	244.7	224.9	-	-	-	-
45.9	235.9	220.5	129.0	-	-	-	227.1	224.9	-	-	-	-
49.2	220.5	213.8	129.0	-	-	-	211.6	215.0	124.6	-	-	-
52.5	206.1	206.1	127.9	-	-	-	198.4	200.6	124.6	-	-	-
55.8	194.0	196.2	127.9	-	78.3	-	186.3	188.5	124.6	-	-	-
59.1	181.9	184.1	127.9	-	78.3	-	174.2	176.4	124.6	-	76.3	-
65.6	162.0	163.1	124.6	-	78.0	-	155.4	157.6	123.5	-	76.3	-
72.2	144.4	146.6	119.0	51.8	77.8	-	138.9	141.1	120.2	52.2	76.1	-
78.7	130.1	132.3	110.2	49.6	76.9	-	125.7	126.8	114.6	50.3	75.8	-
85.3	116.8	117.9	104.1	47.8	75.8	-	113.5	114.6	108.5	48.3	75.4	-
91.9	104.3	105.4	97.9	46.1	71.2	-	102.7	103.8	102.1	46.5	73.6	-
98.4	93.7	94.6	92.2	44.3	67.0	30.2	91.9	93.0	95.9	45.0	69.4	30.4
111.5	76.5	77.4	81.8	41.4	59.7	28.0	74.7	75.6	80.0	42.1	62.2	28.2
124.7	63.5	64.2	68.3	39.0	53.8	26.0	61.7	62.4	66.8	39.7	56.0	26.2
137.8	52.9	53.6	57.8	36.8	48.9	24.3	50.7	51.6	56.2	37.7	51.1	24.7
150.9	43.9	44.5	49.2	34.8	44.8	22.7	41.9	42.5	47.2	35.7	46.7	23.1
164.0	36.6	37.3	41.7	33.3	41.2	21.4	34.4	35.1	39.7	34.0	43.2	21.8
177.2	30.6	30.9	35.5	31.7	38.1	20.3	28.2	28.9	33.3	32.6	36.6	20.7
190.3	25.4	25.8	30.0	30.6	33.1	19.2	23.1	23.6	28.0	31.3	31.1	19.6
203.4	20.9	21.2	25.4	27.8	28.4	18.3	18.7	19.0	23.4	26.2	26.5	18.7
216.5	-	17.4	21.4	23.4	24.3	17.6	14.8	15.2	19.2	21.6	22.3	18.1
229.7	-	-	17.9	-	20.7	17.0	11.7	11.9	15.7	17.9	18.5	17.4
242.8	-	-	14.8	-	17.4	16.3	-	-	12.6	-	15.4	16.8
255.9	-	-	-	-	14.6	15.9	-	-	9.9	-	12.6	15.4
269.0	-	-	-	-	12.1	-	-	-	7.5	-	9.9	12.3
282.2	-	-	-	-	9.9	-	-	-	-	-	7.7	-
295.3	-	-	-	-	-	-	-	-	-	-	5.7	-

STERLING CRANE

SH + LF2

352,700 lb + 88,200 lb ZB 39.4 - 118.1 ft 23'9" 360° ISO

ft	236.2 ft						255.9 ft					
	39.4 ft		78.7 ft		118.1 ft		39.4 ft		78.7 ft		118.1 ft	
	10°	15°	10°	30°	10°	30°	10°	15°	10°	30°	10°	30°
1,000 lb												
39.4	251.3	-	-	-	-	-	-	-	-	-	-	-
42.7	233.7	220.5	-	-	-	-	220.5	-	-	-	-	-
45.9	217.2	220.5	-	-	-	-	208.3	207.2	-	-	-	-
49.2	202.8	205.0	120.2	-	-	-	195.1	197.3	-	-	-	-
52.5	189.6	191.8	120.2	-	-	-	181.9	185.2	114.6	-	-	-
59.1	167.6	169.8	120.2	-	74.1	-	160.9	163.1	114.6	-	-	-
62.3	157.6	159.8	120.2	-	74.1	-	151.0	153.2	114.6	-	71.4	-
65.6	148.8	151.0	120.2	-	74.1	-	143.3	144.4	114.6	-	71.4	-
72.2	133.4	134.5	119.0	-	74.1	-	127.9	130.1	114.6	-	71.4	-
78.7	119.0	121.3	116.8	50.5	74.1	-	114.6	116.8	113.5	50.9	71.4	-
85.3	108.5	110.0	109.6	48.7	73.9	-	104.3	105.8	105.4	49.2	71.4	-
91.9	98.5	99.9	99.9	47.2	73.4	-	94.6	95.9	96.1	47.6	71.2	-
98.4	89.7	90.8	91.5	45.6	71.7	30.6	86.0	87.3	87.7	46.1	71.2	30.6
111.5	72.5	73.6	77.2	42.8	64.4	28.4	71.0	72.1	73.9	43.4	66.6	28.7
124.7	59.1	60.2	64.8	40.6	58.2	26.7	57.3	58.4	62.6	41.0	60.4	26.9
137.8	48.1	48.9	54.0	38.4	53.1	24.9	46.3	47.2	52.2	39.0	54.9	25.4
150.9	39.0	39.9	44.8	36.4	48.5	23.6	37.3	38.1	43.0	37.3	47.0	23.8
164.0	31.7	32.4	37.3	34.8	40.8	22.3	29.8	30.6	35.5	35.5	39.2	22.7
177.2	25.6	26.0	30.9	33.3	34.4	21.2	23.6	24.3	29.1	33.7	32.6	21.6
190.3	20.3	20.7	25.4	29.1	28.9	20.1	18.5	19.0	23.6	27.8	27.1	20.5
203.4	15.9	16.3	20.7	24.0	24.0	19.2	13.9	14.3	19.0	22.5	22.3	19.6
216.5	11.9	12.3	16.8	19.6	19.8	18.5	10.1	10.4	14.8	18.1	18.1	18.7
229.7	8.6	9.0	13.0	15.7	16.1	17.6	6.6	7.1	11.2	14.1	14.3	18.1
242.8	5.7	6.0	9.9	12.1	13.0	16.8	-	-	8.2	10.6	11.2	15.2
255.9	-	-	7.3	-	10.1	13.4	-	-	-	7.5	8.4	11.9
269.0	-	-	-	-	7.5	10.4	-	-	-	-	5.7	9.0
282.2	-	-	-	-	-	7.7	-	-	-	-	-	6.4

ft	275.6 ft					
	39.4 ft		78.7 ft		118.1 ft	
	10°	15°	10°	30°	10°	30°
1,000 lb						
42.7	199.5	-	-	-	-	-
45.9	199.5	188.5	-	-	-	-
52.5	174.2	177.5	110.0	-	-	-
59.1	154.3	156.5	110.0	-	-	-
62.3	144.4	146.6	110.0	-	66.1	-
65.6	136.7	138.9	110.0	-	66.1	-
72.2	122.4	123.5	110.0	-	66.1	-
78.7	110.0	111.3	109.8	51.1	66.1	-
85.3	99.2	100.8	100.8	49.6	66.1	-
91.9	89.7	91.3	91.5	48.1	65.9	-
98.4	81.4	82.7	83.6	46.5	65.7	-
105.0	74.4	75.6	76.7	45.3	65.0	29.8
111.5	67.5	68.6	69.9	44.1	64.4	28.9
124.7	54.7	56.0	58.6	41.7	60.4	27.1
137.8	43.7	44.5	49.6	39.7	51.4	25.6
150.9	34.6	35.5	40.8	37.7	43.9	24.3
164.0	27.1	28.0	33.1	36.2	37.0	22.9
177.2	20.9	21.6	26.7	31.5	30.4	21.8
190.3	15.7	16.3	21.2	25.6	24.7	20.7
203.4	11.2	11.7	16.3	20.5	19.8	19.8
216.5	7.3	7.7	12.3	15.9	15.7	19.2
229.7	-	-	8.8	11.9	12.1	17.2
242.8	-	-	5.5	8.4	8.8	13.4
255.9	-	-	-	-	6.0	9.9
269.0	-	-	-	-	-	7.1

STERLING CRANE

SH / LH + LF2

 352,700 lb + 88,200 lb ZB
  39.4 - 118.1 ft
  23'9"
 360°
ISO

ft	137.8 ft						157.5 ft					
	SH/LH + LF2						SH/LH + LF2					
	39.4 ft	78.7 ft	118.1 ft			39.4 ft	78.7 ft	118.1 ft				
	10°	15°	10°	30°	10°	30°	10°	15°	10°	30°	10°	30°
32.8	255.7	-	-	-	-	-	242.5	-	-	-	-	-
36.1	253.5	206.1	-	-	-	-	242.5	210.5	-	-	-	-
39.4	249.1	197.3	-	-	-	-	240.3	201.7	-	-	-	-
42.7	244.7	188.5	126.8	-	-	-	235.9	194.0	124.6	-	-	-
45.9	233.7	180.8	126.8	-	-	-	231.5	186.3	124.6	-	-	-
52.5	212.7	166.4	125.7	-	76.5	-	222.7	173.1	124.6	-	75.2	-
59.1	194.0	154.3	113.5	-	76.1	-	203.9	160.9	117.9	-	75.2	-
65.6	178.6	144.4	105.2	43.4	75.6	-	181.9	151.0	109.6	-	74.7	-
72.2	160.9	135.6	97.2	41.4	73.2	-	158.7	142.2	101.6	41.7	74.5	-
78.7	142.2	127.9	90.4	39.7	67.9	-	141.1	134.5	94.8	39.9	70.3	-
85.3	127.9	121.3	84.4	37.9	63.1	-	125.7	126.8	88.6	38.4	65.7	-
91.9	115.7	114.6	79.1	36.4	59.1	25.1	113.5	113.5	83.3	37.0	61.5	25.1
98.4	105.2	105.6	74.5	35.1	55.3	24.0	103.0	103.6	78.7	35.7	57.8	24.3
111.5	88.2	88.6	66.6	32.6	49.2	22.0	86.2	86.6	70.5	33.3	51.6	22.3
124.7	75.4	75.6	60.2	30.6	44.1	20.3	73.2	73.6	63.9	31.5	46.3	20.7
137.8	65.0	65.5	54.9	29.1	39.9	19.0	62.8	63.3	58.4	29.8	42.1	19.2
150.9	56.9	57.1	50.7	27.6	36.4	17.6	54.7	54.9	54.0	28.4	38.6	18.1
157.5	53.6	53.6	48.8	27.1	34.9	17.2	51.3	51.5	52.0	27.8	37.0	17.5
164.0	50.3	-	47.0	26.7	33.5	16.8	47.8	48.1	50.0	27.1	35.5	17.0
177.2	-	-	43.9	-	30.9	15.9	42.3	42.5	44.8	26.2	32.8	16.1
190.3	-	-	41.2	-	28.9	15.0	-	-	39.9	-	30.6	15.4
203.4	-	-	-	-	26.9	14.6	-	-	35.7	-	28.7	14.8
216.5	-	-	-	-	25.4	-	-	-	31.7	-	26.9	14.3
229.7	-	-	-	-	24.0	-	-	-	-	-	25.4	-
242.8	-	-	-	-	-	-	-	-	-	-	24.0	-
255.9	-	-	-	-	-	-	-	-	-	-	23.1	-
269.0	-	-	-	-	-	-	-	-	-	-	-	-

STERLING CRANE

SH / LH + LF2

352,700 lb + 88,200 lb ZB 39.4 - 118.1 ft 23'9" 360° ISO

ft	177.2 ft						196.9 ft					
	SH/LH + LF2						SH/LH + LF2					
	39.4 ft	78.7 ft	118.1 ft				39.4 ft	78.7 ft	118.1 ft			
	10°	15°	10°	30°	10°	30°	10°	15°	10°	30°	10°	30°
36.1	229.3	-	-	-	-	-	220.5	-	-	-	-	-
39.4	229.3	205.0	-	-	-	-	220.5	196.2	-	-	-	-
45.9	222.7	190.7	122.4	-	-	-	213.8	194.0	120.2	-	-	-
52.5	215.0	178.6	121.3	-	-	-	207.2	183.0	120.2	-	-	-
55.8	208.3	172.0	121.3	-	73.6	-	200.6	177.5	120.2	-	-	-
59.1	196.2	166.4	121.3	-	73.6	-	188.5	172.0	119.0	-	72.5	-
65.6	175.3	156.5	113.5	-	73.6	-	168.7	162.0	116.8	-	72.5	-
72.2	156.5	147.7	105.8	41.9	73.4	-	152.1	153.2	109.6	42.1	72.5	-
78.7	138.9	140.0	98.8	40.3	72.5	-	136.7	137.8	102.5	40.6	72.3	-
85.3	123.5	124.6	92.8	38.8	67.9	-	121.3	122.4	96.6	39.2	70.1	-
91.9	111.3	112.4	87.3	37.5	63.7	25.1	109.6	110.2	91.1	37.9	65.9	-
98.4	101.0	101.6	82.5	36.2	60.0	24.3	99.0	99.6	86.2	36.6	62.2	24.3
111.5	84.0	84.7	74.3	34.0	53.8	22.5	81.8	82.5	77.8	34.4	55.8	22.5
124.7	71.0	71.4	67.5	32.0	48.5	20.9	68.8	69.4	70.8	32.6	50.5	21.2
137.8	60.6	61.1	61.9	30.4	44.1	19.6	58.4	59.1	62.2	31.1	46.1	19.8
150.9	52.5	52.7	55.6	29.1	40.3	18.5	50.3	50.5	53.6	29.5	42.3	18.7
164.0	45.6	45.9	48.7	27.8	37.3	17.4	43.0	43.4	46.5	28.4	39.0	17.6
177.2	39.7	39.9	42.8	26.9	34.6	16.5	37.0	37.3	40.6	27.3	36.4	16.8
190.3	34.6	34.8	37.7	26.0	32.2	15.7	31.7	32.2	35.3	26.5	34.0	16.1
203.4	-	-	33.1	-	30.2	15.0	27.6	27.8	30.6	25.8	31.7	15.4
216.5	-	-	29.3	-	28.4	14.6	23.8	-	26.7	-	28.7	14.8
229.7	-	-	25.8	-	26.9	14.1	-	-	23.4	-	25.1	14.3
242.8	-	-	-	-	24.5	-	-	-	20.3	-	22.0	13.9
255.9	-	-	-	-	21.6	-	-	-	-	-	19.2	-
269.0	-	-	-	-	19.2	-	-	-	-	-	16.8	-
282.2	-	-	-	-	-	-	-	-	-	-	14.6	-
295.3	-	-	-	-	-	-	-	-	-	-	-	-

STERLING CRANE

SH / LH + LF2

352,700 lb + 88,200 lb ZB 39.4 - 118.1 ft 23'9" 360° ISO

ft	216.5 ft								236.2 ft							
	SH/LH + LF2 SGLmax.				SH/LH + LF2				SH/LH + LF2 SGLmax.				SH/LH + LF2			
	39.4 ft		78.7 ft		118.1 ft				39.4 ft		78.7 ft		118.1 ft			
	10°	15°	10°	10°	30°	10°	30°		10°	15°	10°	10°	30°	10°	30°	
	1,000 lb															
39.4	235.9	-	203.9	-	-	-	-	-	220.5	-	183.0	-	-	-	-	
42.7	235.9	206.1	203.9	-	-	-	-	-	220.5	203.9	183.0	-	-	-	-	
45.9	231.5	199.5	200.6	-	-	-	-	-	220.5	202.8	183.0	-	-	-	-	
49.2	216.1	192.9	198.4	115.7	-	-	-	-	207.2	196.2	179.7	112.4	-	-	-	
52.5	201.7	187.4	195.1	115.7	-	-	-	-	194.0	190.7	177.5	112.4	-	-	-	
59.1	178.6	176.4	180.8	115.7	-	70.8	-	-	170.9	173.1	172.0	111.3	-	-	-	
62.3	168.7	169.8	170.9	115.7	-	70.8	-	-	162.0	163.1	164.2	111.3	-	69.2	-	
65.6	158.7	160.9	162.0	115.7	-	70.8	-	-	152.1	154.3	155.4	110.2	-	69.2	-	
72.2	143.3	144.4	145.5	112.4	-	70.8	-	-	136.7	138.9	140.0	107.8	-	69.2	-	
78.7	129.0	131.2	132.3	106.0	40.8	70.8	-	-	123.5	125.7	126.8	104.5	40.8	69.2	-	
85.3	117.9	119.0	120.2	99.9	39.5	70.5	-	-	112.4	113.5	114.6	101.2	39.7	69.2	-	
91.9	105.6	106.7	107.4	94.6	38.1	67.9	-	-	102.7	103.8	105.2	97.7	38.4	69.2	-	
98.4	94.8	95.9	96.8	89.5	37.0	64.2	24.3	-	92.8	93.7	94.6	92.8	37.3	65.9	24.3	
111.5	77.8	78.5	79.6	81.1	34.8	57.8	22.7	-	75.6	76.5	77.6	82.2	35.3	59.5	22.7	
124.7	64.6	65.3	66.6	70.8	33.1	52.5	21.2	-	62.4	63.3	64.4	68.8	33.5	54.2	21.4	
137.8	54.2	54.9	56.2	60.2	31.5	47.8	20.1	-	51.6	52.5	54.0	58.2	32.0	49.6	20.3	
150.9	45.4	45.9	47.6	51.6	30.2	44.1	19.0	-	42.5	43.4	45.0	49.6	30.6	45.9	19.2	
164.0	37.9	38.6	40.3	44.5	28.9	40.8	17.9	-	35.3	35.9	37.7	42.1	29.3	42.5	18.1	
177.2	32.0	32.4	34.2	38.1	27.8	37.9	17.0	-	29.1	29.5	31.5	35.7	28.2	38.6	17.2	
190.3	26.7	27.1	29.1	32.8	26.9	35.3	16.3	-	23.8	24.3	26.5	30.4	27.3	33.1	16.5	
203.4	22.3	22.5	24.7	28.2	26.2	30.6	15.7	-	19.4	19.8	21.8	25.8	26.7	28.2	15.9	
216.5	18.5	18.7	20.9	24.3	25.6	26.5	15.0	-	15.7	15.9	18.1	21.8	24.3	24.3	15.2	
229.7	15.2	15.4	17.6	20.7	-	22.9	14.6	-	12.3	12.6	14.8	18.3	20.3	20.5	14.8	
242.8	-	-	-	17.6	-	19.8	14.1	-	9.5	9.7	11.9	15.2	-	17.4	14.3	
255.9	-	-	-	15.0	-	17.0	13.9	-	-	-	-	12.3	-	14.6	13.9	
269.0	-	-	-	12.6	-	14.3	-	-	-	-	-	9.9	-	12.1	13.7	
282.2	-	-	-	-	-	12.1	-	-	-	-	-	7.7	-	9.7	-	
295.3	-	-	-	-	-	10.1	-	-	-	-	-	-	-	7.7	-	
308.4	-	-	-	-	-	-	-	-	-	-	-	-	-	6.0	-	

STERLING CRANE

SH / LH + LF2

 352,700 lb + 88,200 lb ZB
  39.4 - 118.1 ft
  23'9"
  360°
 ISO

ft	255.9 ft								275.6 ft								
	SH/LH + LF2 SGLmax.				SH/LH + LF2				SH/LH + LF2 SGLmax.				SH/LH + LF2				
	39.4 ft		78.7 ft		118.1 ft		39.4 ft		78.7 ft		118.1 ft		39.4 ft		78.7 ft		118.1 ft
	10°	15°	10°	10°	30°	10°	30°	10°	15°	10°	10°	30°	10°	30°	10°	30°	
	1,000 lb																
42.7	203.9	-	175.3	-	-	-	-	180.8	-	140.0	-	-	-	-	-	-	
45.9	203.9	189.6	175.3	-	-	-	-	180.8	169.8	140.0	-	-	-	-	-	-	
52.5	186.3	188.5	174.2	108.7	-	-	-	178.6	169.8	138.9	-	-	-	-	-	-	
55.8	175.3	177.5	172.0	108.7	-	-	-	167.6	169.8	136.7	86.4	-	-	-	-	-	
59.1	164.2	166.4	166.4	108.7	-	-	-	157.6	159.8	134.5	86.4	-	-	-	-	-	
62.3	155.4	157.6	157.6	108.2	-	64.6	-	148.8	151.0	132.3	86.4	-	-	-	-	-	
65.6	146.6	148.8	148.8	108.0	-	64.6	-	140.0	142.2	130.1	85.1	-	59.1	-	-	-	
72.2	132.3	133.4	133.4	107.4	-	64.6	-	125.7	127.9	126.8	82.7	-	59.1	-	-	-	
78.7	119.0	120.2	121.3	104.7	41.0	64.6	-	113.5	114.6	116.8	80.2	41.0	57.5	-	-	-	
85.3	108.2	109.6	110.2	102.1	39.7	64.6	-	103.2	104.7	106.5	77.8	39.9	56.0	-	-	-	
91.9	98.5	99.9	100.5	99.9	38.6	64.6	-	93.7	95.0	97.0	75.6	38.8	54.5	-	-	-	
98.4	89.9	91.1	91.9	92.8	37.5	64.6	24.3	85.3	86.6	88.6	73.6	37.7	53.1	-	-	-	
105.0	81.9	82.9	83.7	85.9	36.6	62.9	23.5	78.4	79.6	81.5	71.8	36.8	51.8	23.6	-	-	
111.5	73.9	74.7	75.4	78.9	35.7	61.3	22.7	71.4	72.5	74.3	69.9	35.9	50.5	22.9	-	-	
124.7	60.6	61.5	62.2	66.8	34.0	56.0	21.6	58.0	59.1	61.1	65.0	34.2	47.8	21.6	-	-	
137.8	49.6	50.3	51.4	56.2	32.4	51.4	20.3	47.0	47.8	49.8	55.1	32.6	45.4	20.5	-	-	
150.9	40.6	41.2	42.3	47.4	31.1	47.4	19.2	37.9	38.8	41.0	46.1	31.3	43.7	19.4	-	-	
164.0	33.1	33.7	35.1	39.7	29.8	42.8	18.3	30.4	31.3	33.5	38.4	30.2	41.4	18.5	-	-	
177.2	26.9	27.6	28.9	33.5	28.7	36.4	17.4	24.3	24.9	27.3	32.0	29.1	35.1	17.6	-	-	
190.3	21.8	22.3	23.6	28.0	27.8	30.9	16.8	19.0	19.6	22.0	26.7	28.2	29.5	17.0	-	-	
203.4	17.2	17.6	19.2	23.4	26.5	26.0	16.1	14.6	15.0	17.6	21.8	25.4	24.7	16.3	-	-	
216.5	13.4	13.7	15.2	19.4	22.0	21.8	15.4	10.6	11.0	13.7	17.9	20.9	20.5	15.7	-	-	
229.7	9.9	10.4	11.9	15.7	18.3	18.3	15.0	7.3	7.5	10.4	14.3	17.0	16.8	15.2	-	-	
242.8	7.1	7.3	9.0	12.6	14.8	15.0	14.6	-	-	7.3	11.2	13.7	13.7	14.6	-	-	
255.9	-	-	6.4	9.9	-	12.1	14.1	-	-	-	8.4	10.6	10.8	14.3	-	-	
269.0	-	-	-	7.5	-	9.7	12.6	-	-	-	6.0	-	8.2	11.5	-	-	
282.2	-	-	-	-	-	7.3	9.9	-	-	-	-	-	6.0	8.8	-	-	
295.3	-	-	-	-	-	-	-	-	-	-	-	-	-	6.4	-	-	
308.4	-	-	-	-	-	-	-	-	-	-	-	-	-	-	-	-	