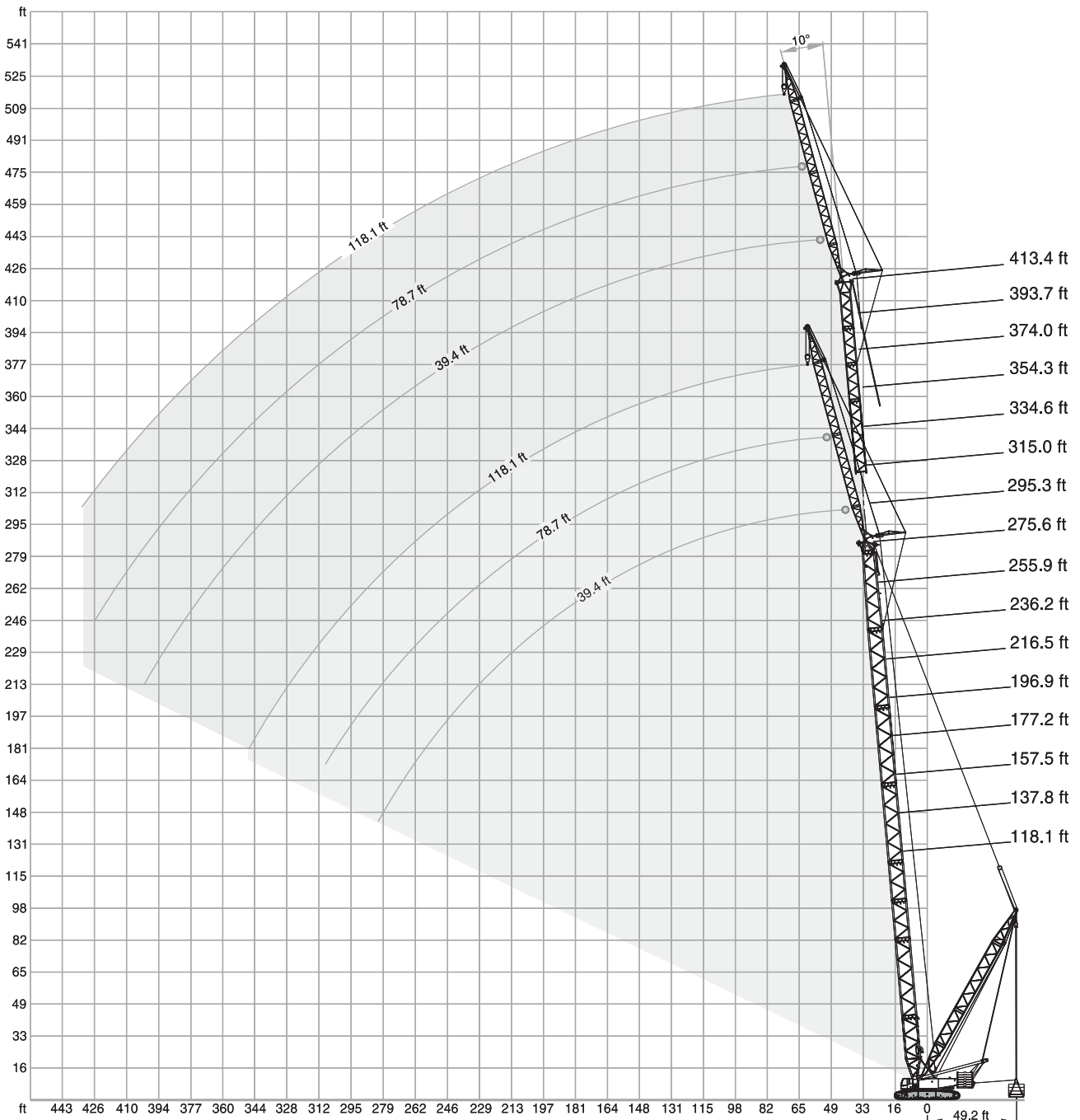




LIFTING CHARTS - Crawler Cranes

DEMAG MODEL CC2400-1 - 440 TON CAPACITY

SSL + LF2, SSL/LSL + LF2



STERLING CRANE

SSL + LF2

352,700 lb + 88,200 lb ZB 29'6" - 49'3" 0 - 551,000 lb 23'9" 360° ISO

ft	118.1 ft						137.8 ft					
	39.4 ft	78.7 ft	118.1 ft	39.4 ft	78.7 ft	118.1 ft	39.4 ft	78.7 ft	118.1 ft	39.4 ft	78.7 ft	118.1 ft
	10°	15°	10°	30°	10°	30°	10°	15°	10°	30°	10°	30°
	1,000 lb											
29.5	257.9	-	-	-	-	-	-	-	-	-	-	-
32.8	257.9	238.1	-	-	-	-	257.9	-	-	-	-	-
36.1	257.9	224.9	-	-	-	-	257.9	231.5	-	-	-	-
39.4	257.9	212.7	142.2	-	-	-	257.9	220.5	-	-	-	-
42.7	253.5	201.7	142.2	-	-	-	257.9	210.5	142.2	-	-	-
45.9	238.1	191.8	141.1	-	-	-	255.7	200.6	141.1	-	-	-
49.2	224.9	181.9	136.7	-	84.7	-	240.3	191.8	140.0	-	-	-
52.5	213.8	174.2	130.1	-	84.7	-	229.3	184.1	135.6	-	84.0	-
59.1	194.0	159.8	116.8	-	83.3	-	208.3	169.8	123.5	-	83.3	-
65.6	176.4	147.7	106.7	52.0	81.1	-	190.7	157.6	112.4	52.7	82.0	-
72.2	163.1	137.8	97.9	49.2	75.2	-	176.4	146.6	103.8	50.0	78.7	-
78.7	151.0	129.0	90.2	46.7	69.2	-	163.1	137.8	96.1	47.6	72.5	-
85.3	140.0	121.3	83.8	44.3	63.9	-	153.2	130.1	89.3	45.4	67.2	-
91.9	131.2	113.5	78.0	42.3	59.3	30.4	143.3	122.4	83.6	43.4	62.6	30.6
98.4	123.5	108.5	73.2	40.3	55.3	28.9	134.5	116.8	78.3	41.7	58.6	29.3
111.5	110.2	98.5	64.8	37.3	48.7	26.2	121.3	106.0	69.7	38.6	51.8	26.7
124.7	100.8	90.4	58.2	34.6	43.4	23.8	110.0	97.4	62.8	35.9	46.3	24.5
137.8	92.6	84.2	52.9	32.4	39.0	22.0	101.0	90.6	57.1	33.7	41.7	22.7
144.4	89.1	81.8	50.7	31.5	37.3	21.2	97.0	87.5	54.7	32.6	39.7	21.8
150.9	-	-	48.5	30.6	35.5	20.5	93.7	84.9	52.2	32.0	37.9	21.2
164.0	-	-	44.8	29.3	32.4	19.2	87.7	80.7	48.5	30.4	34.8	19.8
177.2	-	-	41.9	-	30.0	18.1	-	-	45.2	29.1	32.0	18.7
190.3	-	-	-	-	27.8	17.2	-	-	42.3	-	29.8	17.6
203.4	-	-	-	-	26.0	16.3	-	-	-	-	27.8	17.0
216.5	-	-	-	-	24.5	-	-	-	-	-	26.0	16.3
229.7	-	-	-	-	-	-	-	-	-	-	24.7	-
242.8	-	-	-	-	-	-	-	-	-	-	-	-

STERLING CRANE

SSL + LF2

352,700 lb + 88,200 lb ZB 29'6" - 49'3" 0 - 551,000 lb 23'9" 360° ISO

ft	157.5 ft						177.2 ft					
	39.4 ft	78.7 ft	118.1 ft	39.4 ft	78.7 ft	118.1 ft	39.4 ft	78.7 ft	118.1 ft	39.4 ft	78.7 ft	118.1 ft
	10°	15°	10°	30°	10°	30°	10°	15°	10°	30°	10°	30°
	1,000 lb											
32.8	257.9	-	-	-	-	-	-	-	-	-	-	-
36.1	257.9	229.3	-	-	-	-	257.9	-	-	-	-	-
39.4	257.9	227.1	-	-	-	-	257.9	233.7	-	-	-	-
42.7	257.9	218.3	140.0	-	-	-	257.9	224.9	-	-	-	-
45.9	257.9	208.3	140.0	-	-	-	257.9	216.1	137.8	-	-	-
52.5	242.5	191.8	137.8	-	83.1	-	255.7	199.5	136.7	-	-	-
55.8	231.5	185.2	134.5	-	83.1	-	244.7	191.8	136.7	-	82.2	-
59.1	222.7	177.5	129.0	-	82.9	-	233.7	185.2	133.4	-	82.2	-
65.6	203.9	165.3	117.9	-	82.0	-	216.1	173.1	123.5	-	81.6	-
72.2	188.5	155.4	109.3	50.7	79.8	-	200.6	163.1	113.5	51.4	80.5	-
78.7	175.3	145.5	101.4	48.5	75.6	-	187.4	153.2	106.5	49.2	78.3	-
85.3	164.2	137.8	94.6	46.3	70.3	-	175.3	145.5	99.4	47.2	73.2	-
91.9	154.3	130.1	88.6	44.5	65.7	31.1	165.3	137.8	93.3	45.2	68.6	31.3
98.4	145.5	123.5	83.3	42.8	61.5	29.5	155.4	131.2	88.0	43.7	64.4	30.0
111.5	130.1	112.4	74.3	39.7	54.5	27.1	140.0	120.2	78.7	40.6	57.1	27.6
124.7	119.0	104.3	67.0	37.0	48.9	25.1	127.9	110.2	71.2	38.1	51.4	25.6
137.8	109.3	96.8	61.1	34.8	44.3	23.4	116.8	102.7	64.8	35.9	46.5	23.8
150.9	101.2	90.6	56.0	32.8	40.3	21.8	108.7	96.1	59.7	34.0	42.5	22.3
164.0	94.4	85.5	51.8	31.3	37.0	20.5	101.2	90.4	55.3	32.4	39.0	20.9
177.2	89.1	81.4	48.3	30.0	34.2	19.2	95.0	85.8	51.4	30.9	36.2	19.8
190.3	-	-	45.2	29.1	31.7	18.3	89.9	82.0	48.3	29.8	33.5	18.7
203.4	-	-	42.8	-	29.5	17.4	-	-	45.4	28.9	31.3	17.9
216.5	-	-	40.6	-	27.8	16.8	-	-	43.0	-	29.5	17.2
229.7	-	-	-	-	26.2	16.1	-	-	41.0	-	27.8	16.5
242.8	-	-	-	-	24.9	-	-	-	-	-	26.2	16.1
255.9	-	-	-	-	-	-	-	-	-	-	24.9	-
269.0	-	-	-	-	-	-	-	-	-	-	23.8	-

STERLING CRANE

SSL + LF2

352,700 lb + 88,200 lb ZB 29'6" - 49'3" 0 - 551,000 lb 23'9" 360° ISO

ft	196.9 ft						216.5 ft					
	39.4 ft	78.7 ft	118.1 ft	39.4 ft	78.7 ft	118.1 ft	39.4 ft	78.7 ft	118.1 ft	39.4 ft	78.7 ft	118.1 ft
	10°	15°	10°	30°	10°	30°	10°	15°	10°	30°	10°	30°
36.1	257.9	-	-	-	-	-	-	-	-	-	-	-
39.4	257.9	229.3	-	-	-	-	257.9	-	-	-	-	-
42.7	257.9	229.3	-	-	-	-	257.9	224.9	-	-	-	-
45.9	257.9	220.5	135.6	-	-	-	257.9	224.9	-	-	-	-
49.2	257.9	213.8	135.6	-	-	-	257.9	218.3	130.1	-	-	-
52.5	257.9	206.1	135.6	-	-	-	257.9	211.6	130.1	-	-	-
55.8	253.5	198.4	134.5	-	81.1	-	257.9	205.0	129.0	-	-	-
59.1	244.7	191.8	134.5	-	81.1	-	251.3	198.4	129.0	-	79.4	-
65.6	227.1	180.8	127.9	-	80.7	-	235.9	186.3	126.8	-	79.1	-
72.2	211.6	169.8	119.0	51.8	80.2	-	220.5	176.4	122.4	52.2	78.9	-
78.7	197.3	159.8	110.2	49.6	78.5	-	207.2	166.4	114.6	50.3	78.3	-
85.3	185.2	152.1	104.1	47.8	75.8	-	195.1	158.7	108.5	48.3	76.7	-
91.9	175.3	144.4	97.9	46.1	71.2	-	184.1	151.0	102.1	46.5	73.6	-
98.4	165.3	137.8	92.2	44.3	66.8	30.2	174.2	143.3	96.3	45.0	69.4	30.4
111.5	148.8	125.7	82.7	41.4	59.7	28.0	157.6	132.3	86.6	42.1	62.2	28.2
124.7	135.6	115.7	75.0	39.0	53.8	26.0	143.3	122.4	78.7	39.7	56.0	26.2
137.8	124.6	108.5	68.6	36.8	48.9	24.3	132.3	113.5	72.1	37.5	51.1	24.7
150.9	115.7	101.4	63.1	34.8	44.8	22.7	122.4	106.5	66.4	35.7	46.7	23.1
164.0	108.0	95.5	58.4	33.3	41.2	21.4	114.6	100.3	61.7	34.0	43.2	21.8
177.2	101.4	90.4	54.5	31.7	38.1	20.3	107.6	95.0	57.5	32.6	39.9	20.7
190.3	95.7	86.2	51.1	30.6	35.5	19.2	101.4	90.4	53.8	31.3	37.3	19.6
203.4	90.8	82.5	48.1	29.5	33.1	18.3	96.1	86.2	50.7	30.2	34.8	18.7
216.5	-	79.6	45.4	28.7	31.1	17.6	91.5	82.9	47.8	29.3	32.6	18.1
229.7	-	-	43.2	-	29.3	17.0	86.6	80.2	45.4	28.7	30.9	17.4
242.8	-	-	41.2	-	27.8	16.3	-	-	43.4	-	29.1	16.8
255.9	-	-	-	-	26.2	15.9	-	-	41.4	-	27.6	16.3
269.0	-	-	-	-	25.1	-	-	-	39.9	-	26.5	15.9
282.2	-	-	-	-	24.0	-	-	-	-	-	25.1	-
295.3	-	-	-	-	-	-	-	-	-	-	24.3	-

STERLING CRANE

SSL + LF2

352,700 lb + 88,200 lb ZB 29'6" - 49'3" 0 - 551,000 lb 23'9" 360° ISO

ft	236.2 ft						255.9 ft					
	39.4 ft		78.7 ft		118.1 ft		39.4 ft		78.7 ft		118.1 ft	
	10°	15°	10°	30°	10°	30°	10°	15°	10°	30°	10°	30°
	1,000 lb											
39.4	257.9	-	-	-	-	-	-	-	-	-	-	-
42.7	257.9	229.3	-	-	-	-	257.9	-	-	-	-	-
45.9	257.9	229.3	-	-	-	-	257.9	222.7	-	-	-	-
49.2	257.9	222.7	126.8	-	-	-	257.9	222.7	-	-	-	-
52.5	257.9	216.1	126.8	-	-	-	257.9	218.3	122.4	-	-	-
59.1	257.9	203.9	126.8	-	77.6	-	257.9	207.2	122.4	-	-	-
62.3	249.1	198.4	126.8	-	77.6	-	253.5	201.7	122.4	-	75.4	-
65.6	242.5	191.8	126.8	-	77.6	-	246.9	197.3	122.4	-	75.4	-
72.2	229.3	181.9	122.4	-	77.6	-	233.7	187.4	121.3	-	75.4	-
78.7	217.2	172.0	119.0	50.5	77.4	-	222.7	177.5	117.9	50.9	75.4	-
85.3	205.0	164.2	112.4	48.7	76.3	-	212.7	169.8	115.7	49.2	75.2	-
91.9	192.9	156.5	106.0	47.2	75.2	-	201.7	162.0	109.8	47.6	74.5	-
98.4	183.0	149.9	100.3	45.6	71.7	30.6	191.8	154.3	104.1	46.1	73.9	30.6
111.5	165.3	137.8	90.4	42.8	64.4	28.4	173.1	142.2	94.1	43.4	66.6	28.7
124.7	151.0	126.8	82.2	40.6	58.2	26.7	158.7	132.3	85.8	41.0	60.4	26.9
137.8	138.9	117.9	75.4	38.4	53.1	24.9	146.6	123.5	78.7	39.0	55.1	25.4
150.9	129.0	111.3	69.7	36.4	48.7	23.6	135.6	115.7	72.8	37.3	50.7	23.8
164.0	120.2	104.9	64.6	34.8	45.0	22.3	126.8	109.3	67.7	35.5	47.0	22.7
177.2	113.5	99.4	60.4	33.3	41.9	21.2	119.0	103.6	63.1	34.0	43.7	21.6
190.3	106.9	94.4	56.7	32.0	39.0	20.1	112.4	98.5	59.3	32.6	40.6	20.5
203.4	101.4	90.2	53.4	30.9	36.4	19.2	102.5	93.9	55.8	31.5	38.1	19.6
216.5	94.8	86.4	50.3	30.0	34.2	18.5	93.5	89.9	52.7	30.6	35.7	18.7
229.7	86.4	82.7	47.8	29.1	32.2	17.6	85.5	83.8	50.0	29.8	33.7	18.1
242.8	78.3	76.7	45.6	28.4	30.6	17.0	78.5	77.2	47.6	28.9	32.0	17.4
255.9	-	-	43.4	-	28.9	16.5	71.7	70.5	45.6	28.2	30.2	16.8
269.0	-	-	41.9	-	27.6	16.1	-	-	43.7	-	28.9	16.3
282.2	-	-	40.3	-	26.5	15.7	-	-	41.9	-	27.6	15.9
295.3	-	-	-	-	25.4	-	-	-	40.6	-	26.5	15.7
308.4	-	-	-	-	24.3	-	-	-	-	-	25.4	-
321.5	-	-	-	-	23.6	-	-	-	-	-	24.5	-
334.6	-	-	-	-	-	-	-	-	-	-	23.6	-

STERLING CRANE


SSL + LF2

352,700 lb + 88,200 lb ZB 29'6" - 49'3" 0 - 551,000 lb 23'9" 360° ISO

ft	275.6 ft						295.3 ft					
	39.4 ft		78.7 ft		118.1 ft		39.4 ft		78.7 ft		118.1 ft	
	10°	15°	10°	30°	10°	30°	10°	15°	10°	30°	10°	30°
	1,000 lb											
42.7	246.9	-	-	-	-	-	-	-	-	-	-	-
45.9	246.9	218.3	-	-	-	-	212.7	-	-	-	-	-
49.2	244.7	218.3	-	-	-	-	212.7	200.6	-	-	-	-
52.5	244.7	218.3	117.9	-	-	-	212.7	200.6	-	-	-	-
55.8	244.7	213.8	117.9	-	-	-	212.7	200.6	111.3	-	-	-
59.1	244.7	208.3	117.9	-	-	-	212.7	199.5	111.3	-	-	-
62.3	242.5	203.9	117.9	-	73.2	-	212.7	198.4	111.3	-	-	-
65.6	240.3	199.5	117.9	-	73.2	-	211.6	198.4	111.3	-	70.1	-
72.2	233.7	190.7	117.9	-	73.2	-	210.5	191.8	111.3	-	70.1	-
78.7	227.1	183.0	116.8	51.1	73.2	-	209.4	184.1	111.3	51.4	70.1	-
85.3	217.2	174.2	115.7	49.6	73.2	-	205.0	177.5	111.3	49.8	70.1	-
91.9	207.2	166.4	112.4	48.1	73.2	-	199.5	172.0	111.3	48.5	70.1	-
98.4	198.4	159.8	107.6	46.5	73.2	-	195.1	164.2	108.2	47.0	70.1	-
105.0	189.6	153.2	102.3	45.2	71.2	29.8	189.6	157.6	104.3	45.6	69.2	30.0
111.5	180.8	147.7	97.4	44.1	68.6	28.9	185.2	152.1	100.5	44.5	68.3	29.1
124.7	166.4	136.7	89.1	41.7	62.4	27.1	170.9	141.1	92.2	42.1	63.9	27.3
137.8	153.2	127.9	81.8	39.7	57.1	25.6	156.5	132.3	84.9	40.1	58.9	25.8
150.9	142.2	120.2	75.8	37.7	52.5	24.3	143.3	124.6	78.7	38.4	54.5	24.5
164.0	130.1	113.5	70.5	36.2	48.7	22.9	129.0	117.9	73.2	36.8	50.5	23.1
177.2	116.8	107.8	65.9	34.6	45.2	21.8	114.6	108.9	68.6	35.3	47.0	22.0
190.3	106.7	102.5	61.7	33.3	42.3	20.7	101.0	99.9	64.4	34.0	43.9	21.2
203.4	99.4	97.7	58.2	32.2	39.7	19.8	92.4	92.4	60.6	32.8	41.2	20.3
216.5	91.3	91.7	55.1	31.1	37.3	19.2	86.0	86.0	57.3	31.7	38.8	19.4
229.7	83.3	83.8	52.2	30.2	35.3	18.3	79.6	79.6	54.5	30.6	36.6	18.7
242.8	76.3	76.5	49.8	29.3	33.3	17.6	73.2	73.4	51.8	30.0	34.6	18.1
255.9	70.1	70.3	47.6	28.7	31.5	17.2	66.8	67.0	49.6	29.1	32.8	17.4
269.0	63.3	63.9	45.4	28.2	30.0	16.5	60.4	60.6	47.4	28.4	31.3	17.0
282.2	56.0	56.7	43.7	-	28.7	16.1	54.0	54.2	45.4	28.0	29.8	16.3
295.3	-	-	42.1	-	27.6	15.9	47.6	48.1	43.9	-	28.7	16.1
308.4	-	-	40.8	-	26.5	15.4	-	-	42.3	-	27.3	15.7
321.5	-	-	-	-	25.4	-	-	-	40.1	-	26.2	15.4
334.6	-	-	-	-	24.5	-	-	-	37.5	-	25.4	-
347.8	-	-	-	-	23.8	-	-	-	-	-	24.5	-
360.9	-	-	-	-	-	-	-	-	-	-	23.8	-
374.0	-	-	-	-	-	-	-	-	-	-	23.1	-

STERLING CRANE

SSL + LF2

 352,700 lb + 88,200 lb ZB
  29'6" - 49'3"
  0 - 551,000 lb
  23'9"
 360°
 ISO

ft	1,000 lb					
	10°	15°	10°	30°	10°	30°
45.9	190.7	-	-	-	-	-
49.2	190.7	181.9	-	-	-	-
52.5	190.7	181.9	-	-	-	-
55.8	190.7	181.9	106.9	-	-	-
59.1	190.7	181.9	106.9	-	-	-
65.6	189.6	180.8	106.9	-	65.3	-
72.2	187.4	179.7	106.9	-	65.3	-
78.7	186.3	177.5	106.9	-	65.3	-
85.3	184.1	175.3	106.9	50.0	65.3	-
91.9	180.8	170.9	106.9	48.7	65.3	-
98.4	177.5	165.3	106.0	47.4	65.3	-
105.0	174.2	160.9	103.0	46.1	65.3	30.0
111.5	170.9	155.4	99.9	45.0	65.0	29.1
124.7	160.9	145.5	93.5	42.5	62.6	27.6
137.8	148.8	136.7	87.7	40.6	60.2	26.0
150.9	136.7	126.8	81.4	38.8	56.0	24.7
164.0	124.6	117.9	75.8	37.3	52.0	23.6
177.2	112.4	108.5	71.0	35.7	48.5	22.5
190.3	101.0	98.8	66.8	34.4	45.4	21.4
203.4	88.8	89.3	63.1	33.3	42.5	20.5
216.5	82.2	82.2	59.7	32.2	40.1	19.6
229.7	76.5	76.5	56.7	31.3	37.9	19.0
242.8	70.8	71.0	53.8	30.4	35.9	18.3
255.9	65.0	65.3	51.4	29.5	34.2	17.6
269.0	59.3	59.5	49.2	28.9	32.4	17.2
282.2	53.8	54.0	47.2	28.4	31.1	16.5
295.3	48.1	48.3	44.8	27.8	29.5	16.1
308.4	42.3	42.5	41.7	-	28.4	15.9
321.5	-	-	38.8	-	27.3	15.4
334.6	-	-	35.7	-	26.2	15.2
347.8	-	-	32.8	-	25.4	-
360.9	-	-	-	-	24.5	-
374.0	-	-	-	-	23.8	-
387.1	-	-	-	-	23.1	-
400.3	-	-	-	-	-	-

STERLING CRANE

SSL / LSL + LF2

352,700 lb + 88,200 lb ZB 29'6" - 49'3" 0 - 551,000 lb 23'9" 360° ISO

ft	255.9 ft								275.6 ft									
	SSL/LSL + LF2 SGLmax.				SSL/LSL + LF2				SSL/LSL + LF2 SGLmax.				SSL/LSL + LF2					
	39.4 ft		78.7 ft		118.1 ft		39.4 ft		78.7 ft		118.1 ft		39.4 ft		78.7 ft		118.1 ft	
	10°	15°	10°	10°	30°	10°	30°	10°	15°	10°	10°	30°	10°	30°	10°	30°	10°	30°
	1,000 lb																	
42.7	235.9	-	201.7	-	-	-	-	220.5	-	174.2	-	-	-	-	-	-	-	-
45.9	235.9	206.1	201.7	-	-	-	-	220.5	206.1	174.2	-	-	-	-	-	-	-	-
52.5	233.7	194.0	197.3	117.9	-	-	-	220.5	197.3	169.8	-	-	-	-	-	-	-	-
55.8	233.7	189.6	195.1	117.9	-	-	-	220.5	191.8	167.6	104.7	-	-	-	-	-	-	-
59.1	231.5	184.1	191.8	117.9	-	-	-	220.5	187.4	165.3	104.7	-	-	-	-	-	-	-
62.3	231.5	179.7	189.6	117.9	-	72.5	-	220.5	183.0	162.0	103.2	-	-	-	-	-	-	-
65.6	229.3	175.3	186.3	117.9	-	72.5	-	219.4	178.6	159.8	101.9	-	68.8	-	-	-	-	-
72.2	218.3	166.4	181.9	117.9	-	72.5	-	218.3	170.9	155.4	98.8	-	68.3	-	-	-	-	-
78.7	206.1	158.7	176.4	112.4	41.0	72.5	-	212.7	163.1	149.9	95.9	41.0	67.5	-	-	-	-	-
85.3	195.1	152.1	170.9	106.3	39.7	72.5	-	201.7	156.5	145.5	92.8	39.9	66.6	-	-	-	-	-
91.9	185.2	146.6	166.4	100.8	38.6	71.4	-	191.8	149.9	141.1	90.2	38.8	64.8	-	-	-	-	-
98.4	176.4	140.0	160.9	95.7	37.5	67.7	24.3	183.0	144.4	136.7	87.5	37.7	63.1	-	-	-	-	-
111.5	162.0	130.1	154.3	87.1	35.5	61.3	22.7	167.6	134.5	129.0	82.0	35.9	59.5	22.9	-	-	-	-
124.7	148.8	121.3	147.7	79.8	34.0	56.0	21.6	154.3	125.7	123.5	77.6	34.2	56.2	21.6	-	-	-	-
137.8	137.8	113.5	137.8	73.6	32.4	51.4	20.3	143.3	117.9	116.8	74.3	32.6	52.9	20.5	-	-	-	-
150.9	129.0	107.8	129.0	68.3	31.1	47.4	19.2	134.5	111.3	111.3	70.8	31.3	48.9	19.4	-	-	-	-
164.0	120.2	102.1	120.2	63.9	29.8	44.1	18.3	125.7	105.6	105.2	66.4	30.2	45.4	18.5	-	-	-	-
177.2	113.5	97.0	113.5	60.0	28.7	41.0	17.4	117.9	100.5	99.0	62.2	29.1	42.5	17.6	-	-	-	-
190.3	107.8	92.6	107.8	56.4	27.8	38.4	16.8	109.3	95.9	93.3	58.6	28.2	39.7	17.0	-	-	-	-
203.4	102.3	88.8	102.3	53.1	26.9	36.2	16.1	102.3	91.9	88.2	55.3	27.3	37.5	16.3	-	-	-	-
216.5	96.8	85.3	96.6	50.5	26.2	34.0	15.4	94.6	88.4	83.3	52.5	26.7	35.3	15.7	-	-	-	-
229.7	88.8	82.5	88.8	48.1	25.6	32.2	15.0	86.6	85.1	78.3	50.0	26.0	33.3	15.2	-	-	-	-
242.8	81.8	79.8	81.1	45.9	25.1	30.4	14.6	79.4	79.8	73.2	47.6	25.4	31.7	14.6	-	-	-	-
255.9	75.0	75.2	73.4	43.9	24.7	28.9	14.1	73.2	73.4	68.1	45.6	24.9	30.2	14.3	-	-	-	-
269.0	-	67.2	-	42.1	-	27.6	13.7	66.4	66.8	63.1	43.9	24.7	28.7	13.9	-	-	-	-
282.2	-	-	-	40.8	-	26.5	13.4	59.3	59.5	58.2	42.3	-	27.6	13.7	-	-	-	-
295.3	-	-	-	39.5	-	25.4	13.2	-	-	-	40.8	-	26.5	13.4	-	-	-	-
308.4	-	-	-	-	-	24.5	-	-	-	-	39.5	-	25.4	13.2	-	-	-	-
321.5	-	-	-	-	-	23.6	-	-	-	-	38.6	-	24.5	-	-	-	-	-
334.6	-	-	-	-	-	22.9	-	-	-	-	-	-	23.6	-	-	-	-	-
347.8	-	-	-	-	-	-	-	-	-	-	-	-	22.9	-	-	-	-	-

STERLING CRANE

SSL / LSL + LF2

352,700 lb + 88,200 lb ZB 29'6" - 49'3" 0 - 551,000 lb 23'9" 360° ISO

ft	295.3 ft								315.0 ft									
	SSL/LSL + LF2 SGLmax.				SSL/LSL + LF2				SSL/LSL + LF2 SGLmax.				SSL/LSL + LF2					
	39.4 ft		78.7 ft		118.1 ft		39.4 ft		78.7 ft		118.1 ft		39.4 ft		78.7 ft		118.1 ft	
	10°	15°	10°	10°	30°	10°	30°	10°	15°	10°	10°	30°	10°	30°	10°	30°	10°	30°
	1,000 lb																	
45.9	207.2	-	157.6	-	-	-	-	195.1	-	148.8	-	-	-	-	-	-	-	-
49.2	207.2	194.0	157.6	-	-	-	-	195.1	184.1	148.8	-	-	-	-	-	-	-	-
52.5	207.2	194.0	156.5	-	-	-	-	195.1	184.1	148.8	-	-	-	-	-	-	-	-
55.8	207.2	194.0	154.3	100.1	-	-	-	195.1	184.1	147.7	-	-	-	-	-	-	-	-
59.1	207.2	190.7	153.2	100.1	-	-	-	195.1	184.1	146.6	92.2	-	-	-	-	-	-	-
65.6	207.2	181.9	148.8	97.7	-	63.7	-	195.1	184.1	143.3	91.5	-	-	-	-	-	-	-
72.2	206.1	174.2	145.5	95.2	-	63.7	-	195.1	176.4	141.1	89.7	-	60.4	-	-	-	-	-
78.7	206.1	166.4	141.1	92.8	-	63.7	-	195.1	169.8	137.8	88.2	-	60.4	-	-	-	-	-
85.3	203.9	159.8	136.7	90.4	39.9	63.7	-	195.1	163.1	134.5	86.0	40.1	60.0	-	-	-	-	-
91.9	198.4	153.2	132.3	87.7	38.8	63.1	-	194.0	156.5	131.2	84.0	39.0	59.7	-	-	-	-	-
98.4	189.6	147.7	129.0	85.3	37.9	61.7	-	192.9	151.0	127.9	81.8	38.1	58.4	-	-	-	-	-
111.5	174.2	137.8	121.3	80.7	36.2	58.9	22.9	179.7	141.1	121.3	77.8	36.4	55.8	22.9	-	-	-	-
124.7	160.9	129.0	115.7	75.8	34.4	56.0	21.6	166.4	132.3	115.7	73.6	34.6	53.1	21.6	-	-	-	-
137.8	148.8	121.3	110.2	72.8	33.1	52.9	20.5	154.3	124.6	111.3	70.3	33.3	50.7	20.5	-	-	-	-
150.9	138.9	114.6	104.9	69.4	31.7	50.5	19.6	144.4	117.9	106.9	67.7	32.0	48.3	19.6	-	-	-	-
164.0	131.2	109.1	99.4	66.4	30.4	47.0	18.5	133.4	111.3	102.1	65.0	30.9	46.5	18.7	-	-	-	-
177.2	121.3	103.8	93.9	63.3	29.5	43.9	17.9	120.2	106.9	97.4	62.4	29.8	44.8	17.9	-	-	-	-
190.3	106.0	99.2	88.4	60.2	28.4	41.2	17.0	107.6	102.1	92.8	59.7	28.9	42.5	17.2	-	-	-	-
203.4	96.3	95.0	83.6	56.9	27.6	38.8	16.3	92.8	93.5	88.2	56.9	28.0	39.9	16.5	-	-	-	-
216.5	89.9	90.4	79.1	53.8	26.9	36.6	15.9	85.3	85.3	83.3	54.2	27.1	37.7	15.9	-	-	-	-
229.7	83.6	84.0	74.7	51.8	26.2	34.6	15.2	79.6	79.8	78.3	51.6	26.5	35.7	15.4	-	-	-	-
242.8	77.2	77.6	70.3	49.6	25.6	32.8	14.8	74.1	74.3	73.4	49.8	25.8	34.0	15.0	-	-	-	-
255.9	71.0	71.2	65.9	47.4	25.1	31.3	14.3	68.3	68.6	68.6	48.3	25.4	32.4	14.6	-	-	-	-
269.0	64.6	65.0	61.5	45.4	24.7	29.8	13.9	62.8	63.1	63.7	47.0	24.9	30.9	14.1	-	-	-	-
282.2	58.2	58.9	57.1	43.9	24.5	28.4	13.7	57.1	57.3	58.9	45.4	24.5	29.5	13.7	-	-	-	-
295.3	52.0	52.5	52.9	42.3	-	27.3	13.4	51.4	51.8	54.0	43.7	24.3	28.2	13.4	-	-	-	-
308.4	-	-	-	40.8	-	26.2	13.2	45.9	46.1	49.2	42.3	24.0	27.1	13.2	-	-	-	-
321.5	-	-	-	39.7	-	25.4	13.0	-	-	-	41.0	-	26.2	13.0	-	-	-	-
334.6	-	-	-	38.6	-	24.5	-	-	-	-	39.5	-	25.1	13.0	-	-	-	-
347.8	-	-	-	-	-	23.6	-	-	-	-	37.9	-	24.5	-	-	-	-	-
360.9	-	-	-	-	-	22.9	-	-	-	-	-	-	23.6	-	-	-	-	-
374.0	-	-	-	-	-	22.5	-	-	-	-	-	-	23.1	-	-	-	-	-
387.1	-	-	-	-	-	-	-	-	-	-	-	-	22.5	-	-	-	-	-

STERLING CRANE

SSL / LSL + LF2

352,700 lb + 88,200 lb ZB 29'6" - 49'3" 0 - 551,000 lb 23'9" 360° ISO

ft	334.6 ft								354.3 ft									
	SSL/LSL + LF2				SSL/LSL + LF2				SSL/LSL + LF2				SSL/LSL + LF2					
	SGLmax.		SSL/LSL + LF2		SGLmax.		SSL/LSL + LF2		SGLmax.		SSL/LSL + LF2		SGLmax.		SSL/LSL + LF2			
	39.4 ft		78.7 ft		118.1 ft		39.4 ft		78.7 ft		118.1 ft		39.4 ft		78.7 ft		118.1 ft	
	10°	15°	10°	10°	30°	10°	30°	10°	15°	10°	10°	30°	10°	30°	10°	30°	10°	30°
	1,000 lb																	
49.2	179.7	-	130.1	-	-	-	-	-	-	-	-	-	-	-	-	-	-	-
52.5	179.7	170.9	130.1	-	-	-	-	160.9	-	117.9	-	-	-	-	-	-	-	-
55.8	179.7	170.9	129.0	-	-	-	-	160.9	153.2	117.9	-	-	-	-	-	-	-	-
59.1	179.7	170.9	127.9	84.0	-	-	-	160.9	153.2	117.9	-	-	-	-	-	-	-	-
62.3	179.7	170.9	126.8	84.0	-	-	-	160.9	153.2	116.8	78.7	-	-	-	-	-	-	-
65.6	179.7	170.9	126.8	84.0	-	-	-	160.9	153.2	116.8	78.7	-	-	-	-	-	-	-
72.2	179.7	170.9	124.6	82.5	-	57.1	-	159.8	153.2	115.7	78.0	-	53.4	-	-	-	-	-
78.7	179.7	170.9	121.3	81.1	-	56.9	-	158.7	153.2	113.5	76.9	-	53.4	-	-	-	-	-
85.3	179.7	166.4	119.0	79.4	40.1	56.2	-	157.6	151.0	112.4	75.6	40.1	52.9	-	-	-	-	-
91.9	179.7	159.8	116.8	77.8	39.0	55.8	-	156.5	149.9	110.2	74.1	39.0	52.5	-	-	-	-	-
98.4	178.6	154.3	114.6	76.1	38.1	55.1	-	154.3	148.8	109.1	72.8	38.1	52.0	-	-	-	-	-
111.5	177.5	144.4	109.3	72.8	36.4	52.7	22.9	149.9	144.4	105.2	69.9	36.6	50.0	22.7	-	-	-	-
124.7	170.9	135.6	104.5	69.4	34.8	50.5	21.6	144.4	138.9	101.4	67.0	35.1	48.3	21.6	-	-	-	-
137.8	159.8	127.9	100.5	66.1	33.5	48.5	20.7	136.7	131.2	97.9	64.2	33.7	46.3	20.7	-	-	-	-
150.9	146.6	121.3	96.6	63.7	32.2	46.3	19.6	126.8	123.5	94.4	61.9	32.4	44.3	19.8	-	-	-	-
164.0	132.3	114.6	92.4	61.3	31.1	44.5	18.7	116.8	114.6	91.1	59.7	31.3	42.5	19.0	-	-	-	-
177.2	117.9	110.0	88.4	58.9	30.0	43.0	18.1	108.0	106.3	87.5	57.8	30.2	41.2	18.1	-	-	-	-
190.3	106.3	105.2	84.4	56.4	29.1	41.4	17.4	98.3	97.2	84.2	55.8	29.3	39.9	17.4	-	-	-	-
203.4	93.0	93.5	80.2	54.0	28.2	39.9	16.8	88.6	88.2	80.7	53.8	28.4	38.6	16.8	-	-	-	-
216.5	79.4	80.7	76.3	51.8	27.3	38.4	16.1	78.9	79.1	77.4	51.6	27.8	37.3	16.1	-	-	-	-
229.7	74.3	74.5	72.1	49.4	26.7	36.8	15.7	69.7	70.3	73.9	49.6	26.9	35.9	15.7	-	-	-	-
242.8	69.2	69.4	67.9	47.0	26.2	35.1	15.0	65.3	65.3	69.7	47.6	26.5	34.6	15.2	-	-	-	-
255.9	64.2	64.4	63.7	45.2	25.6	33.3	14.6	60.6	60.8	65.3	45.4	25.8	33.1	14.8	-	-	-	-
269.0	59.1	59.3	59.5	43.7	25.1	32.0	14.1	56.0	56.2	61.1	43.7	25.4	31.7	14.3	-	-	-	-
282.2	54.0	54.2	55.3	42.1	24.7	30.4	13.9	51.6	51.6	56.7	41.9	24.9	30.4	13.9	-	-	-	-
295.3	48.9	49.2	51.1	40.3	24.5	29.3	13.7	47.0	47.2	52.5	40.1	24.5	29.8	13.7	-	-	-	-
308.4	43.9	44.3	47.0	38.8	24.0	28.0	13.2	42.3	42.5	48.1	38.1	24.3	28.9	13.4	-	-	-	-
321.5	39.0	39.2	42.8	37.3	24.0	27.1	13.0	37.9	37.9	43.9	36.4	24.0	27.8	13.2	-	-	-	-
334.6	34.0	34.2	38.6	35.5	-	26.0	13.0	33.3	33.5	39.5	34.6	23.8	26.9	13.0	-	-	-	-
347.8	-	-	-	34.0	-	25.1	12.8	28.7	28.9	35.3	32.6	-	26.0	12.8	-	-	-	-
360.9	-	-	-	32.4	-	24.5	-	-	-	-	30.9	-	25.1	12.6	-	-	-	-
374.0	-	-	-	-	-	23.6	-	-	-	-	29.1	-	24.5	12.6	-	-	-	-
387.1	-	-	-	-	-	23.1	-	-	-	-	27.3	-	23.6	-	-	-	-	-
400.3	-	-	-	-	-	22.5	-	-	-	-	-	-	23.1	-	-	-	-	-
413.4	-	-	-	-	-	-	-	-	-	-	-	-	22.3	-	-	-	-	-
426.5	-	-	-	-	-	-	-	-	-	-	-	-	21.4	-	-	-	-	-
439.6	-	-	-	-	-	-	-	-	-	-	-	-	-	-	-	-	-	-

STERLING CRANE

SSL / LSL + LF2

 352,700 lb + 88,200 lb ZB
  29'6" - 49'3"
  0 - 551,000 lb
  23'9"
 360°
 ISO

ft	1,000 lb							
	10°	15°	10°	10°	30°	10°	30°	
52.5	146.6	-	102.5	-	-	-	-	
55.8	146.6	142.2	102.5	-	-	-	-	
59.1	146.6	142.2	102.5	-	-	-	-	
62.3	146.6	142.2	102.1	69.9	-	-	-	
65.6	146.6	142.2	101.4	69.9	-	-	-	
72.2	146.6	142.2	100.5	69.4	-	48.9	-	
78.7	146.6	142.2	99.2	68.3	-	48.9	-	
85.3	145.5	141.1	97.7	67.5	-	48.7	-	
91.9	145.5	140.0	96.3	66.4	39.2	47.8	-	
98.4	144.4	140.0	94.6	65.3	38.4	47.2	-	
111.5	142.2	136.7	91.3	62.8	36.6	45.6	22.7	
124.7	138.9	134.5	87.7	60.4	35.3	44.1	21.6	
137.8	134.5	131.2	84.7	58.0	34.0	42.3	20.7	
150.9	124.6	122.4	81.8	55.6	32.6	40.8	19.8	
164.0	114.6	113.5	78.9	53.8	31.5	39.2	19.0	
177.2	105.8	104.7	76.1	51.8	30.4	37.9	18.3	
190.3	96.3	95.7	73.2	50.0	29.5	36.6	17.4	
203.4	86.9	86.4	70.3	48.3	28.7	35.5	17.0	
216.5	77.2	77.4	67.5	46.5	28.0	34.2	16.3	
229.7	67.7	68.3	64.6	44.5	27.1	33.1	15.7	
242.8	59.7	60.0	61.7	42.8	26.7	31.7	15.2	
255.9	55.6	55.8	58.2	41.0	26.0	30.4	14.8	
269.0	51.4	51.6	54.9	39.2	25.6	29.3	14.3	
282.2	47.4	47.6	51.4	37.7	24.9	28.0	14.1	
295.3	43.2	43.4	48.1	36.2	24.7	26.9	13.7	
308.4	39.0	39.2	44.5	34.6	24.3	26.0	13.4	
321.5	34.8	35.3	41.2	32.8	24.0	25.4	13.2	
334.6	30.9	31.1	37.7	31.3	23.8	24.5	13.0	
347.8	26.7	26.9	34.4	29.8	23.6	23.6	12.8	
360.9	22.5	22.7	30.9	28.2	-	22.9	12.6	
374.0	-	-	-	26.7	-	22.0	12.6	
387.1	-	-	-	25.1	-	21.2	12.6	
400.3	-	-	-	23.6	-	20.5	-	
413.4	-	-	-	-	-	19.6	-	
426.5	-	-	-	-	-	18.7	-	
439.6	-	-	-	-	-	18.1	-	
452.8	-	-	-	-	-	-	-	

STERLING CRANE

SSL / LSL + LF2

352,700 lb + 88,200 lb ZB 29'6" - 49'3" 0 - 551,000 lb 23'9" 360° ISO

ft	393.7 ft						413.4 ft					
	SSL/LSL + LF2						SSL/LSL + LF2					
	39.4 ft		78.7 ft		118.1 ft		39.4 ft		78.7 ft		118.1 ft	
	10°	15°	10°	30°	10°	30°	10°	15°	10°	30°	10°	30°
	1,000 lb											
55.8	87.7	-	-	-	-	-	76.1	-	-	-	-	-
59.1	87.7	81.8	-	-	-	-	76.1	71.2	-	-	-	-
65.6	86.4	81.4	58.6	-	-	-	75.4	71.2	52.2	-	-	-
72.2	85.3	80.2	58.6	-	-	-	74.3	70.3	52.2	-	-	-
78.7	84.0	79.1	57.8	-	41.2	-	73.2	69.4	51.4	-	36.8	-
85.3	82.7	77.8	56.7	-	41.2	-	71.9	68.6	50.7	-	36.8	-
91.9	81.1	76.5	55.8	38.6	40.8	-	70.8	67.5	49.8	35.5	36.4	-
98.4	79.6	75.4	54.7	38.4	40.1	-	69.7	66.4	48.9	35.5	35.9	-
111.5	76.5	72.5	52.7	36.8	38.8	22.7	67.0	63.9	47.2	35.1	35.1	-
124.7	73.4	69.9	50.7	35.3	37.3	21.6	64.4	61.7	45.4	34.6	34.0	21.6
137.8	70.3	67.0	48.5	34.0	35.9	20.7	61.9	59.3	43.9	34.0	32.8	20.7
150.9	68.1	64.8	46.5	32.8	34.4	19.8	59.5	57.1	42.1	32.8	31.5	19.8
164.0	65.7	62.8	45.0	31.7	33.1	19.0	57.5	55.3	40.6	32.0	30.2	19.0
177.2	63.3	60.6	43.4	30.6	31.7	18.3	55.6	53.6	39.2	30.9	28.9	18.3
190.3	60.8	58.4	41.9	29.8	30.9	17.6	53.6	51.6	37.9	30.0	28.0	17.6
203.4	58.6	56.4	40.6	28.9	29.8	17.0	51.6	49.8	36.6	29.1	27.1	17.0
216.5	56.2	54.2	39.0	28.2	28.7	16.3	49.6	47.8	35.3	28.4	26.2	16.5
229.7	53.8	52.0	37.5	27.3	27.8	15.9	47.4	46.1	34.0	27.6	25.1	15.9
242.8	51.4	50.0	35.9	26.7	26.7	15.4	45.4	44.3	32.6	26.9	24.3	15.4
255.9	48.9	47.8	34.6	26.2	25.6	15.0	43.4	42.3	31.3	26.5	23.4	15.0
269.0	46.5	45.4	33.1	25.6	24.7	14.6	41.4	40.6	30.0	25.8	22.5	14.6
282.2	44.1	43.2	31.7	25.1	23.6	14.1	39.5	38.6	28.7	25.4	21.6	14.1
295.3	41.7	40.8	30.4	24.7	22.5	13.9	37.3	36.6	27.6	24.7	20.7	13.9
308.4	39.2	38.6	29.3	24.5	21.6	13.4	35.3	34.6	26.5	23.8	19.6	13.4
321.5	36.8	36.2	28.2	24.0	21.2	13.2	33.3	32.6	25.4	22.9	19.0	13.2
334.6	34.4	34.0	27.1	23.8	20.5	13.0	31.1	30.6	24.3	22.3	18.3	13.0
347.8	32.0	31.5	25.8	23.6	19.8	12.8	29.1	28.7	23.1	21.4	17.6	12.8
360.9	29.3	29.3	24.7	22.9	19.4	12.6	27.1	26.9	22.0	20.5	17.2	12.6
374.0	26.9	26.9	23.6	-	18.7	12.6	25.1	24.9	21.2	19.8	16.5	12.6
387.1	24.5	24.7	22.5	-	18.1	12.3	22.9	22.9	20.1	-	15.9	12.3
400.3	-	-	21.2	-	17.6	12.3	20.9	20.9	19.0	-	15.2	12.3
413.4	-	-	20.1	-	17.0	-	-	-	17.9	-	14.6	12.1
426.5	-	-	-	-	16.3	-	-	-	16.8	-	14.1	-
439.6	-	-	-	-	15.9	-	-	-	15.7	-	13.4	-
452.8	-	-	-	-	15.2	-	-	-	-	-	12.8	-
465.9	-	-	-	-	-	-	-	-	-	-	12.1	-
479.0	-	-	-	-	-	-	-	-	-	-	-	-