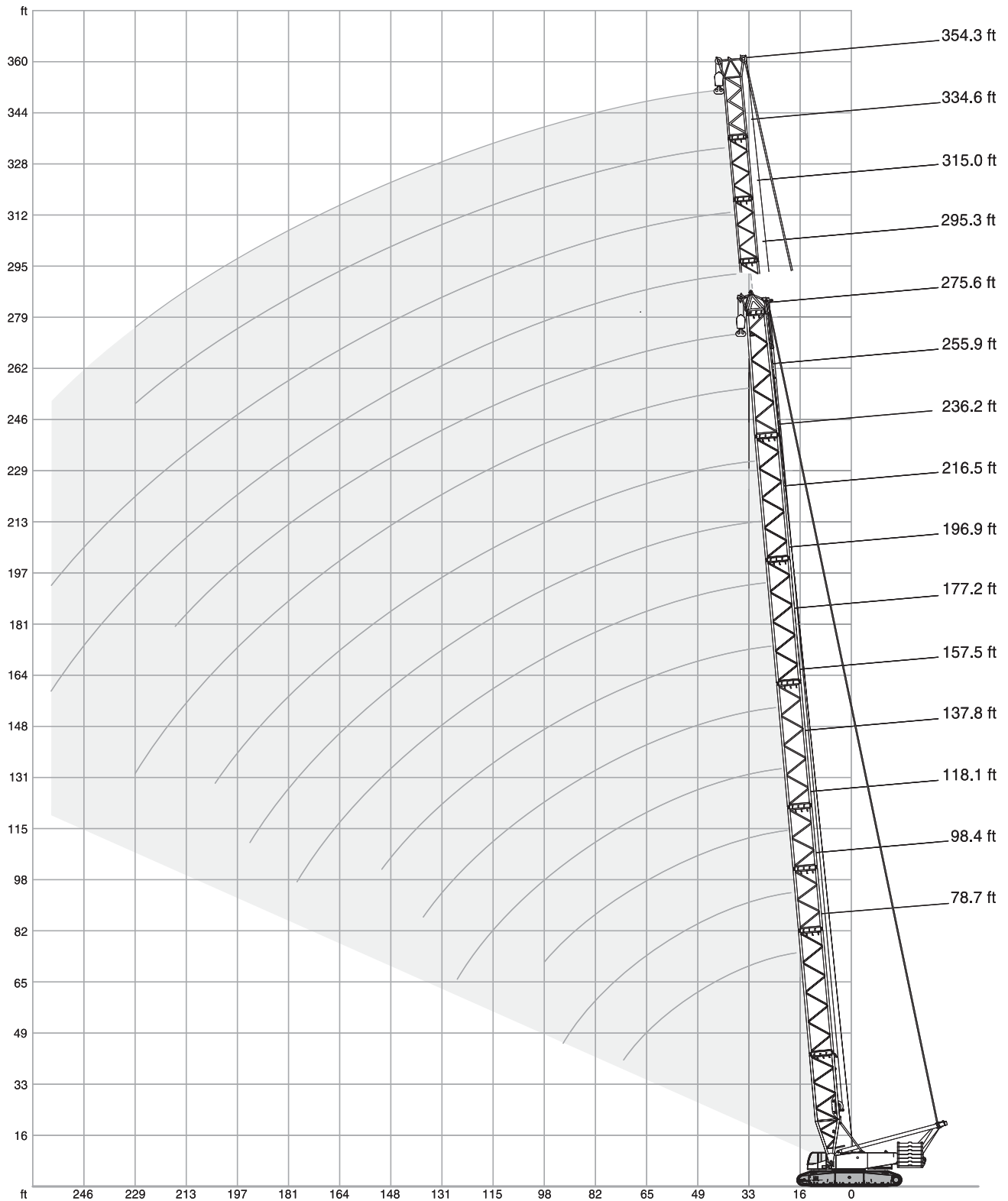




## LIFTING CHARTS - Crawler Cranes

### DEMAG MODEL CC2400-1 - 440 TON CAPACITY

#### SH, SH/LH



# STERLING CRANE

## SH

23'9"

360°

ISO

ft	78.7 ft		98.4 ft		118.1 ft		137.8 ft		157.5 ft		177.2 ft	
	352.7klb+ 88.2klb ZB	220.5klb	352.7klb+ 88.2klb ZB	220.5klb	352.7klb+ 88.2klb ZB	220.5klb	352.7klb+ 88.2klb ZB	220.5klb	352.7klb+ 88.2klb ZB	220.5klb	352.7klb+ 88.2klb ZB	220.5klb
	1,000 lb											
18.0	-	586.4	-	-	-	-	-	-	-	-	-	-
19.7	-	571.0	-	571.0	-	-	-	-	-	-	-	-
23.0	-	515.9	-	469.6	679.0	429.9	626.1	396.8	-	-	-	-
26.2	-	431.0	-	396.8	582.0	368.2	542.3	341.7	507.1	317.5	476.2	296.5
29.5	-	369.3	544.5	343.9	509.3	319.7	476.2	298.7	449.7	280.0	423.3	262.4
32.8	511.5	320.8	480.6	302.0	451.9	283.3	425.5	265.7	402.3	249.1	380.3	234.8
39.4	385.8	238.1	383.6	235.9	367.1	228.2	348.3	215.8	331.8	203.9	315.3	192.7
45.9	306.4	188.1	304.2	185.4	302.0	183.0	294.3	180.3	281.1	170.9	267.9	161.8
52.5	253.5	154.1	251.3	151.5	248.0	149.0	245.8	146.6	242.5	144.6	231.5	138.2
59.1	215.8	129.9	213.0	127.2	210.3	124.6	207.9	122.1	205.9	120.2	203.7	118.4
65.6	187.0	111.8	184.3	108.9	181.4	106.3	178.8	103.6	176.8	101.6	175.0	99.9
72.2	164.7	97.7	161.8	94.8	159.0	91.9	156.3	89.3	154.3	87.3	152.3	85.5
78.7	-	-	144.0	83.6	140.9	80.5	138.2	77.8	136.0	75.8	134.3	73.9
85.3	-	-	129.2	74.3	126.1	71.2	123.5	68.6	121.3	66.4	119.3	64.4
91.9	-	-	117.3	66.8	114.0	63.5	111.1	60.6	108.9	58.4	106.9	56.4
98.4	-	-	-	-	103.8	57.1	100.8	54.2	98.5	51.8	96.3	49.6
111.5	-	-	-	-	-	-	84.4	43.9	81.8	41.0	79.8	38.4
124.7	-	-	-	-	-	-	72.1	35.9	69.4	32.6	67.0	30.0
137.8	-	-	-	-	-	-	-	-	59.7	26.5	57.1	23.4
150.9	-	-	-	-	-	-	-	-	-	-	49.2	18.3
157.5	-	-	-	-	-	-	-	-	-	-	-	-

ft	196.9 ft		216.5 ft		236.2 ft		255.9 ft		275.6 ft	
	352.7klb+ 88.2klb ZB	220.5klb	352.7klb+ 88.2klb ZB	220.5klb	352.7klb+ 88.2klb ZB	220.5klb	352.7klb+ 88.2klb ZB	220.5klb	352.7klb+ 88.2klb ZB	220.5klb
	1,000 lb									
29.5	400.1	246.9	379.2	232.6	-	-	-	-	-	-
32.8	360.5	221.6	342.8	209.4	326.3	197.5	310.9	187.2	-	-
39.4	300.9	182.1	286.6	172.8	273.4	163.4	262.4	155.4	250.2	146.8
45.9	255.7	153.2	244.7	145.7	234.8	137.8	224.9	131.4	215.6	124.1
52.5	221.6	131.0	213.4	124.8	204.1	117.9	196.4	112.4	188.1	106.0
59.1	195.1	113.3	187.8	108.0	179.7	102.1	173.3	97.2	165.8	91.5
65.6	173.3	98.3	166.9	94.4	159.8	88.8	153.9	84.7	147.3	79.6
72.2	150.8	83.8	149.5	82.7	143.1	78.0	138.0	74.1	131.8	69.4
78.7	132.5	72.3	131.4	71.0	129.0	68.8	124.3	65.3	118.8	60.8
85.3	117.7	62.6	116.4	61.5	114.9	59.7	112.7	57.5	107.4	53.4
91.9	105.2	54.7	104.1	53.1	102.3	51.1	101.6	50.5	97.4	47.0
98.4	94.6	47.6	93.5	46.1	91.7	44.1	91.1	43.2	88.8	41.0
111.5	77.8	36.2	76.5	34.6	74.7	32.6	74.1	31.7	72.1	29.5
124.7	65.0	27.6	63.7	26.0	61.7	23.8	60.8	22.9	58.6	20.7
137.8	54.9	20.9	53.1	19.2	50.9	17.0	50.0	15.9	47.6	13.7
150.9	46.5	15.7	44.5	13.9	42.3	11.5	41.2	10.4	38.8	8.2
164.0	39.5	11.5	37.5	9.5	35.1	7.1	34.0	-	31.7	-
177.2	34.0	8.2	31.7	-	29.3	-	28.0	-	25.6	-
190.3	-	-	27.1	-	24.3	-	22.9	-	20.5	-
203.4	-	-	-	-	20.1	-	18.7	-	16.1	-
216.5	-	-	-	-	-	-	15.0	-	12.3	-
229.7	-	-	-	-	-	-	11.9	-	9.3	-
242.8	-	-	-	-	-	-	-	-	-	-

# STERLING CRANE

## SH/LH

23'9" 360° ISO

ft	137.8 ft		157.5 ft		177.2 ft		196.9 ft		216.5 ft		236.2 ft		255.9 ft	
	SH/LH	SH/LH	SH/LH	SH/LH	SH/LH	SH/LH	SH/LH	SH/LH	SH/LH	SH/LH	SH/LH	SH/LH	SH/LH	SH/LH
	352.7klb+88.2klb ZB	220.5klb	352.7klb+88.2klb ZB	220.5klb	352.7klb+88.2klb ZB	220.5klb	352.7klb+88.2klb ZB	220.5klb	352.7klb+88.2klb ZB	220.5klb	352.7klb+88.2klb ZB	220.5klb	352.7klb+88.2klb ZB	220.5klb
	1,000 lb													
23.0	418.9	403.4	-	-	-	-	-	-	-	-	-	-	-	-
26.2	418.9	348.3	418.9	325.2	418.9	304.2	-	-	-	-	-	-	-	-
29.5	418.9	306.4	418.9	287.7	418.9	270.1	402.3	254.6	384.7	239.2	-	-	-	-
32.8	418.9	273.4	410.1	256.8	388.0	242.5	368.2	229.3	350.5	216.5	332.9	204.6	306.4	193.1
39.4	356.0	222.7	339.5	211.9	323.0	200.6	308.6	190.0	294.3	180.1	281.1	170.6	267.9	161.6
45.9	302.0	188.3	288.8	178.8	275.6	170.0	264.6	161.4	252.4	153.2	241.4	145.3	231.5	137.6
52.5	254.6	155.2	250.2	153.2	240.3	146.6	230.4	139.3	220.5	132.3	211.9	125.4	202.8	118.8
59.1	216.5	130.7	214.5	128.8	212.1	126.8	203.7	121.7	195.3	115.5	187.4	109.6	179.7	103.6
65.6	187.6	112.2	185.4	110.2	183.4	108.0	181.4	106.0	174.6	102.1	167.6	96.6	160.5	91.3
72.2	164.9	97.9	162.7	95.7	160.7	93.7	158.5	91.5	156.5	89.5	150.8	85.8	144.6	80.9
78.7	146.8	86.4	144.6	84.2	142.4	82.0	140.4	80.0	138.2	77.8	136.2	75.8	131.0	71.9
85.3	131.8	76.9	129.6	74.7	127.4	72.5	125.4	70.3	123.2	68.3	121.3	66.4	119.3	64.4
91.9	119.5	69.0	117.3	66.8	115.1	64.6	112.9	62.4	110.9	60.4	108.7	58.4	107.1	56.9
98.4	109.1	62.6	106.7	60.2	104.5	58.0	102.3	55.8	100.3	53.6	98.1	51.6	96.6	49.8
111.5	92.6	52.0	89.9	49.6	87.7	47.2	85.5	45.0	83.3	42.5	81.1	40.1	79.6	38.1
124.7	80.0	44.3	77.4	41.7	75.0	39.2	72.5	36.4	70.3	34.0	68.3	31.3	66.6	29.3
137.8	-	-	67.5	35.5	64.8	32.6	62.6	29.8	60.2	27.1	58.0	24.5	56.2	22.5
150.9	-	-	-	-	56.9	27.3	54.5	24.5	52.0	21.6	49.8	19.0	47.6	17.0
164.0	-	-	-	-	-	-	47.8	20.1	45.4	17.2	42.5	14.6	40.6	12.3
177.2	-	-	-	-	-	-	42.5	16.8	39.5	13.7	36.8	10.8	34.4	8.6
190.3	-	-	-	-	-	-	-	-	34.8	10.8	31.7	7.7	29.3	-
203.4	-	-	-	-	-	-	-	-	-	-	27.6	-	25.1	-
216.5	-	-	-	-	-	-	-	-	-	-	-	-	21.4	-

ft	275.6 ft		295.3 ft		315.0 ft		334.6 ft		354.3 ft	
	SH/LH SGLmax.	SH/LH	SH/LH SGLmax.	SH/LH	SH/LH SGLmax.	SH/LH	SH/LH SGLmax.	SH/LH	SH/LH SGLmax.	SH/LH
	352.7klb+88.2klb ZB	220.5klb	352.7klb+88.2klb ZB	220.5klb	352.7klb+88.2klb ZB	220.5klb	352.7klb+88.2klb ZB	220.5klb	352.7klb+88.2klb ZB	220.5klb
	1,000 lb									
36.1	274.5	248.0	168.2	241.4	203.3	160.5	-	-	-	-
39.4	253.5	248.0	154.5	241.4	203.3	147.5	210.1	196.0	138.9	176.6
42.7	234.8	239.2	142.4	224.9	203.3	136.2	210.1	196.0	128.1	176.6
45.9	219.4	222.7	131.8	209.7	199.1	126.1	200.4	196.0	118.6	176.6
52.5	191.8	196.0	114.0	183.6	189.2	109.1	175.7	180.3	102.3	167.8
59.1	169.8	173.7	99.4	162.3	168.0	95.2	155.2	160.1	89.1	148.4
65.6	151.2	155.4	87.5	144.6	150.4	83.8	138.5	143.1	78.0	132.1
72.2	135.8	140.0	77.6	129.9	135.6	74.3	124.1	128.8	68.8	118.4
78.7	122.8	127.0	69.0	117.3	122.8	65.9	111.8	116.6	60.6	106.5
85.3	111.3	115.5	61.5	106.3	111.8	58.9	101.2	106.0	53.8	96.1
91.9	101.6	105.6	55.1	96.6	102.3	52.5	91.7	96.8	47.6	87.1
98.4	92.6	95.9	48.9	88.2	93.9	47.0	83.6	88.6	42.3	78.9
111.5	75.6	78.9	37.3	73.9	78.0	36.4	69.9	74.7	33.1	65.5
124.7	62.6	65.9	28.4	60.4	65.0	27.6	58.4	62.6	24.7	54.7
137.8	51.8	55.6	21.6	49.6	54.7	20.7	47.4	51.8	17.9	44.5
150.9	43.0	46.7	15.9	40.6	45.9	15.0	38.4	43.0	12.1	35.7
164.0	35.7	39.5	11.2	33.3	38.6	10.4	31.1	35.5	7.5	28.4
177.2	29.5	33.3	7.5	27.3	32.4	6.4	24.9	29.5	-	22.3
190.3	24.5	28.2	-	22.0	27.1	-	19.8	24.3	-	17.0
203.4	20.1	23.8	-	17.6	22.7	-	15.2	19.8	-	-
216.5	16.3	20.3	-	13.9	19.0	-	11.5	15.9	-	-
229.7	13.2	17.0	-	10.6	15.7	-	8.2	12.6	-	-
242.8	10.4	14.1	-	7.7	12.8	-	-	9.7	-	-
255.9	-	-	-	-	10.4	-	-	7.1	-	-
269.0	-	-	-	-	-	-	-	-	-	-

**Remarks**

For SH/LH SGLmax. a boom power-kit is required