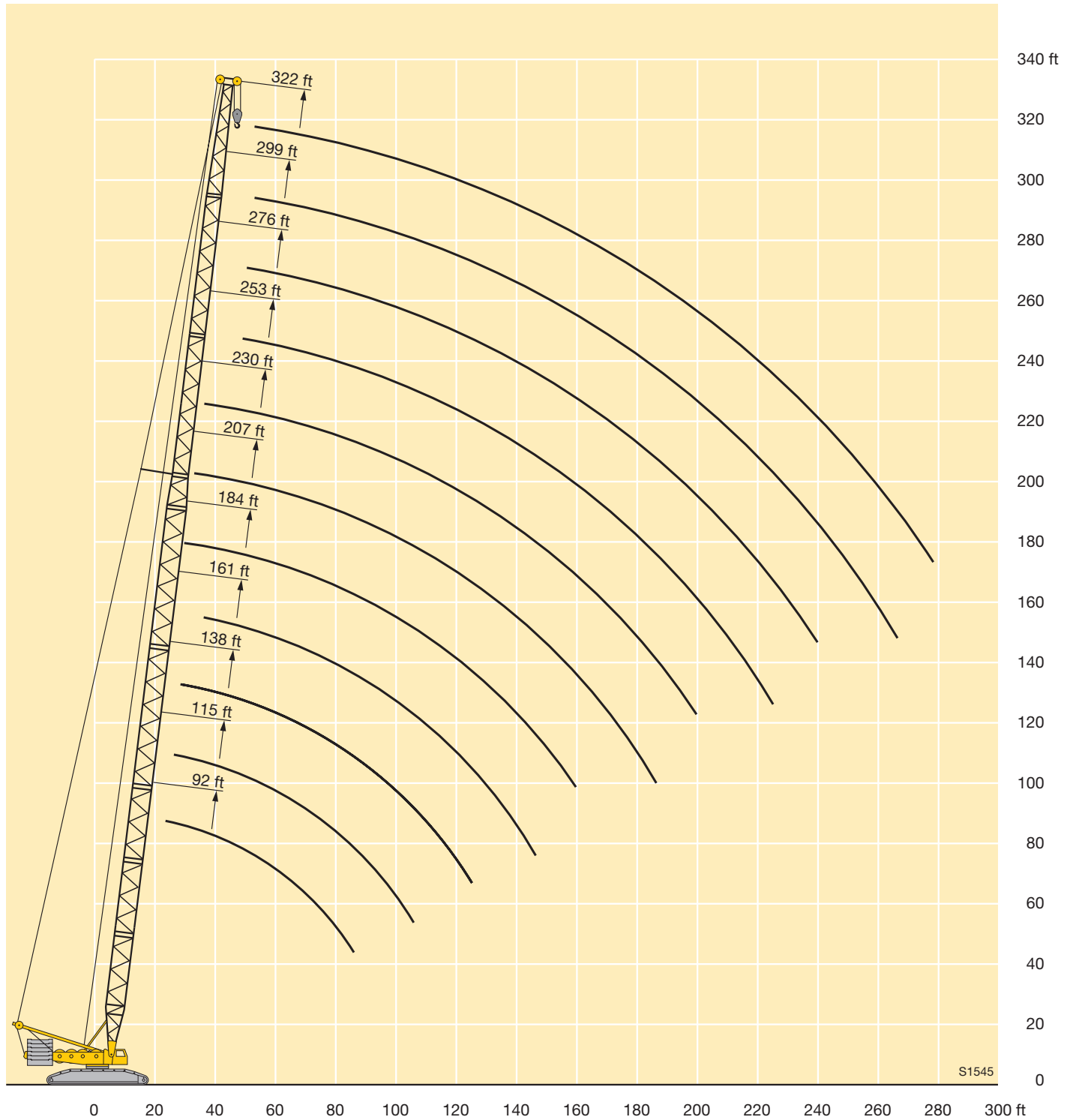




Lifting heights on Sw boom



STERLING CRANE

Lifting capacities on Sw boom

ft	92 ft - 322 ft		360°		341800 lbs		94800 lbs															
	Sw								92 ft	115 ft	138 ft	161 ft	184 ft	207 ft	230 ft	253 ft	276 ft	299 ft	322 ft	ft		
20		397																				20
21		397																				21
22		397	397																			22
23		397	397	397																		23
24		397	397	397																		24
26		397	397	397																		26
28		397	397	397	397	328																28
30		397	397	397	395	319	292															30
32		393	397	385	390	309	281															32
34		387	391	366	379	299	271	243														34
36		367	380	397	365	289	261	238														36
38		397	368	360	352	280	252	234	241													38
40		365	359	352	339	272	244	230	239	220	197											40
45		325	319	314	301	252	224	221	232	216	185											45
50		286	283	280	269	233	206	213	219	207	180	160										50
55		251	251	249	242	216	190	204	202	194	176	158										55
60		222	221	220	219	201	176	192	184	177	170	155										60
65		199	199	197	195	187	163	176	169	162	157	149										65
70		181	180	179	177	174	152	163	156	150	145	138										70
75		165	164	163	161	160	141	151	144	138	134	128										75
80		151	151	149	147	146	130	140	134	128	124	119										80
85		140	139	138	135	134	120	130	125	119	116	110										85
90			129	128	125	124	112	121	116	112	108	103										90
95			120	119	117	115	106	112	109	104	101	96										95
100			112	111	109	108	101	104	102	98	95	90										100
105				104	102	100	95.5	96.5	95	92	89	84.5										105
110				98	95.5	94	91	90.5	88.5	86.5	83.5	79										110
115				92.5	90	88.5	86	84.5	83	81	79	74.5										115
120				87	85	83.5	81	79.5	77.5	76	74.5	70										120
125					80	79	76.5	74.5	73	71.5	70	66										125
130					76	74.5	72.5	70.5	68.5	67	66	62										130
135					72.5	71	68.5	66.5	64.5	63	62.5	58.4										135
140					69	67.5	65	63	61	59.5	58.8	54.8										140
150						61	58.6	56.6	54.6	52.9	52.2	48.1										150
160							53	51	48.9	47.2	46.3	42.2										160
170							48	46.1	44	42.2	41.1	37										170
180							42.4	42	39.8	37.8	36.6	32.5										180
190								38.4	36	33.8	32.5	28.3										190
200									32.4	30.2	28.8	24.5										200
210									29.3	26.9	25.4	21										210
220									26.5	24.1	22.4	17.8										220
230										21.5	19.6	15.1										230
240											17	12.9										240
250											14.6	11.2										250
260											13.1	9.6										260
270												8.2										270

TAB 124009 / 124010