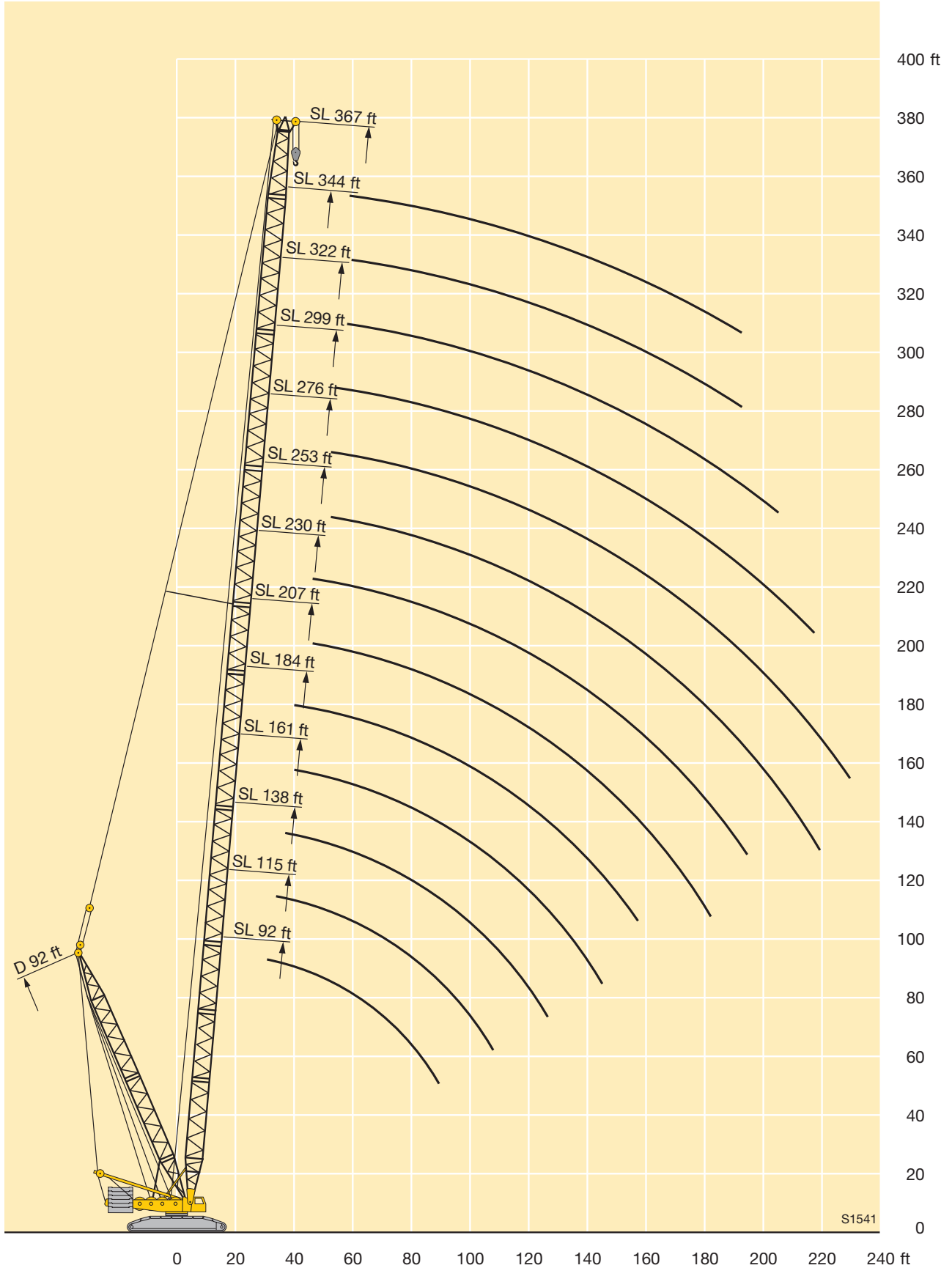




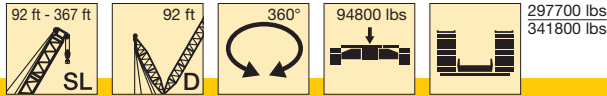
Lifting heights on SLD boom/derrick combination



S1541

STERLING CRANE

Lifting capacities on SLD boom/derrick combination



ft	92 ft	115 ft	138 ft	161 ft	184 ft	207 ft	230 ft	253 ft	276 ft*	299 ft*	322 ft*	344 ft*	367 ft*	ft
23		583	571											23
24		562	551											24
26		520	510											26
28	495	485	476	466										28
30	461	453	444	434	448									30
32	430	425	417	405	420									32
34	400	398	400	400	394	375	356							34
36	371	371	370	371	370	354	336							36
38	347	347	346	346	345	335	319	306						38
40	325	325	324	324	323	318	303	291	269					40
45	280	280	278	278	277	277	269	259	247					45
50	246	245	243	243	241	241	239	233	224	215	201			50
55	218	216	214	214	212	212	211	209	203	195	187	173	150	55
60	195	193	191	190	188	188	186	186	184	178	171	164	149	60
65	176	174	172	171	169	168	167	166	166	162	156	150	144	65
70	160	158	156	155	152	152	150	149	150	147	144	138	133	70
75	147	144	142	141	138	138	136	135	135	132	131	126	123	75
80	135	133	130	129	126	125	123	122	122	119	118	115	113	80
85	125	122	120	118	115	114	113	111	111	108	107	104	104	85
90		113	111	109	106	105	103	102	101	98.5	97	94	94.5	90
95		106	103	101	98	97	95	93.5	92.5	90	88.5	85.5	85.5	95
100		98.5	95.5	93.5	90.5	89.5	87.5	86	85	82	80.5	77.5	77.5	100
105			89	87	84	82.5	80.5	79	78	75	73.5	70.5	70.5	105
110			83	81	78	77	74.5	73	72	69	67	64.5	64	110
115			78	76	73	71.5	69	67.5	66.5	63.5	61.5	58.6	58.3	115
120			73.5	71	68	66.5	64	62.5	61.5	58.4	56.4	53.4	53	120
125				66.5	63.5	62	59.5	57.9	56.6	53.6	51.6	48.6	48.1	125
130				62.5	59.4	57.6	55.3	53.7	52.3	49.3	47.2	44.3	43.7	130
135				59.2	55.8	54	51.6	50	48.5	45.5	43.4	40.4	39.8	135
140				55.9	52.4	50.5	48	46.4	44.9	41.9	39.7	36.7	36.1	140
150					46.3	44.2	41.6	39.9	38.3	35.3	33	30.1	29.2	150
160						38.7	36	34.3	32.5	29.5	27.2	24.2	22.8	160
170						34	31.2	29.4	27.5	24.5	22.1	19.1	16.5	170
180						30	27.1	25.1	23.2	20.1	17.7	14.7	12.6	180
190							23.4	21.4	19.3	16.2	13.7	10.8	9.2	190
200								18	15.8	12.7	10.2			200
210								15	12.6	9.5				210
220								12.4	9.9	6.7				220
230									7.4					230

* erectable only with derrick ballast / n'est relevable qu'avec contrepoids derrick

TAB 124073 / 124074