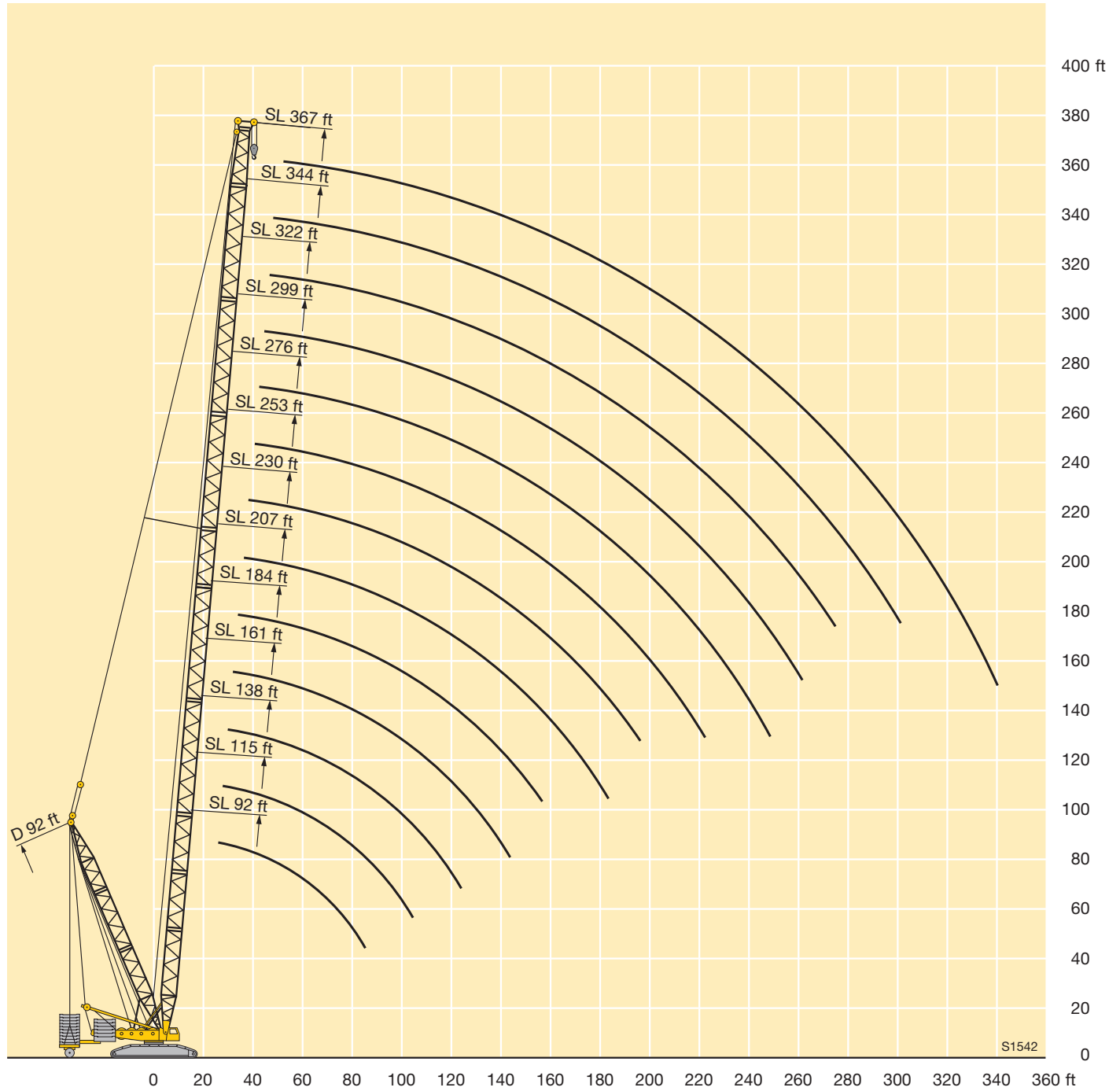



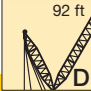




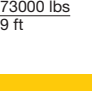



Lifting heights on SLDB/BW boom/derrick combination



STERLING CRANE

Lifting capacities on SLDB/BW boom/derrick combination

| |  92 ft - 367 ft |  92 ft |  360° |  297700 lbs |  94800 lbs |  B BW |  573000 lbs 49 ft | | | | | | | |  |
|-----|--|---|--|--|---|--|---|--------|--------|--------|--------|--------|--------|-----|---|
| | 92 ft | 115 ft | 138 ft | 161 ft | 184 ft | 207 ft | 230 ft | 253 ft | 276 ft | 299 ft | 322 ft | 344 ft | 367 ft | ft | |
| 21 | 772 | | | | | | | | | | | | | 21 | |
| 22 | 766 | | | | | | | | | | | | | 22 | |
| 23 | 758 | 745 | 719 | | | | | | | | | | | 23 | |
| 24 | 756 | 742 | 717 | | | | | | | | | | | 24 | |
| 26 | 750 | 737 | 713 | 657 | | | | | | | | | | 26 | |
| 28 | 745 | 733 | 710 | 655 | | | | | | | | | | 28 | |
| 30 | 741 | 729 | 706 | 652 | 605 | | | | | | | | | 30 | |
| 32 | 736 | 725 | 703 | 649 | 603 | 531 | 476 | | | | | | | 32 | |
| 34 | 733 | 721 | 700 | 647 | 601 | 530 | 475 | | | | | | | 34 | |
| 36 | 729 | 717 | 697 | 644 | 599 | 529 | 475 | 404 | | | | | | 36 | |
| 38 | 726 | 714 | 694 | 642 | 598 | 528 | 474 | 404 | | | | | | 38 | |
| 40 | 715 | 711 | 691 | 640 | 596 | 528 | 474 | 404 | 330 | | | | | 40 | |
| 45 | 648 | 704 | 679 | 635 | 593 | 526 | 473 | 404 | 325 | 277 | 238 | | | 45 | |
| 50 | 579 | 678 | 653 | 616 | 579 | 524 | 472 | 404 | 320 | 276 | 238 | | | 50 | |
| 55 | 520 | 634 | 627 | 594 | 559 | 518 | 471 | 401 | 316 | 275 | 238 | 201 | 167 | 55 | |
| 60 | 470 | 578 | 601 | 570 | 534 | 505 | 468 | 396 | 313 | 274 | 237 | 199 | 165 | 60 | |
| 65 | 426 | 528 | 565 | 549 | 510 | 482 | 459 | 388 | 309 | 272 | 236 | 196 | 162 | 65 | |
| 70 | 394 | 486 | 520 | 516 | 497 | 465 | 442 | 378 | 303 | 270 | 234 | 194 | 160 | 70 | |
| 75 | 366 | 450 | 481 | 480 | 477 | 447 | 422 | 367 | 297 | 266 | 231 | 192 | 158 | 75 | |
| 80 | 340 | 418 | 448 | 444 | 451 | 429 | 403 | 357 | 289 | 260 | 227 | 188 | 154 | 80 | |
| 85 | 316 | 390 | 422 | 414 | 419 | 411 | 388 | 347 | 283 | 253 | 222 | 182 | 150 | 85 | |
| 90 | | 367 | 398 | 390 | 391 | 394 | 375 | 338 | 276 | 247 | 217 | 177 | 146 | 90 | |
| 95 | | 346 | 377 | 369 | 368 | 374 | 359 | 328 | 270 | 242 | 212 | 173 | 142 | 95 | |
| 100 | | 327 | 358 | 349 | 347 | 352 | 341 | 318 | 264 | 236 | 208 | 168 | 138 | 100 | |
| 105 | | | 339 | 332 | 329 | 331 | 324 | 308 | 258 | 231 | 203 | 164 | 134 | 105 | |
| 110 | | | 322 | 319 | 312 | 314 | 312 | 299 | 252 | 225 | 199 | 159 | 130 | 110 | |
| 115 | | | 307 | 304 | 298 | 298 | 299 | 288 | 246 | 220 | 196 | 155 | 127 | 115 | |
| 120 | | | 294 | 290 | 286 | 283 | 286 | 276 | 241 | 216 | 192 | 152 | 124 | 120 | |
| 125 | | | | 278 | 275 | 268 | 272 | 264 | 235 | 211 | 188 | 148 | 120 | 125 | |
| 130 | | | | 267 | 264 | 257 | 259 | 254 | 229 | 206 | 184 | 144 | 116 | 130 | |
| 135 | | | | 256 | 253 | 248 | 248 | 244 | 222 | 202 | 180 | 141 | 113 | 135 | |
| 140 | | | | 245 | 242 | 239 | 237 | 235 | 214 | 197 | 176 | 137 | 109 | 140 | |
| 150 | | | | | 223 | 221 | 217 | 219 | 199 | 187 | 169 | 130 | 103 | 150 | |
| 160 | | | | | | 204 | 201 | 203 | 184 | 178 | 161 | 123 | 97 | 160 | |
| 170 | | | | | | 192 | 187 | 188 | 171 | 169 | 154 | 116 | 91 | 170 | |
| 180 | | | | | | 179 | 175 | 175 | 162 | 159 | 147 | 110 | 86 | 180 | |
| 190 | | | | | | | 164 | 162 | 155 | 150 | 141 | 105 | 81.5 | 190 | |
| 200 | | | | | | | | 150 | 147 | 140 | 135 | 100 | 77.5 | 200 | |
| 210 | | | | | | | | 141 | 139 | 131 | 128 | 96 | 73.5 | 210 | |
| 220 | | | | | | | | 132 | 134 | 124 | 121 | 92 | 70 | 220 | |
| 230 | | | | | | | | | 126 | 116 | 114 | 88.5 | 67 | 230 | |
| 240 | | | | | | | | | 119 | 109 | 107 | 86 | 64 | 240 | |
| 250 | | | | | | | | | | 103 | 101 | 83.5 | 62 | 250 | |
| 260 | | | | | | | | | | 97.5 | 95 | 81 | 59.7 | 260 | |
| 270 | | | | | | | | | | | 90 | 79.5 | 57.5 | 270 | |
| 280 | | | | | | | | | | | | 78 | 55.5 | 280 | |
| 290 | | | | | | | | | | | | 76 | 53.9 | 290 | |
| 300 | | | | | | | | | | | | 72 | 52.7 | 300 | |
| 310 | | | | | | | | | | | | | 51.7 | 310 | |
| 320 | | | | | | | | | | | | | 50.4 | 320 | |
| 330 | | | | | | | | | | | | | 48.9 | 330 | |
| 340 | | | | | | | | | | | | | 47.6 | 340 | |

TAB 147008 / 147014