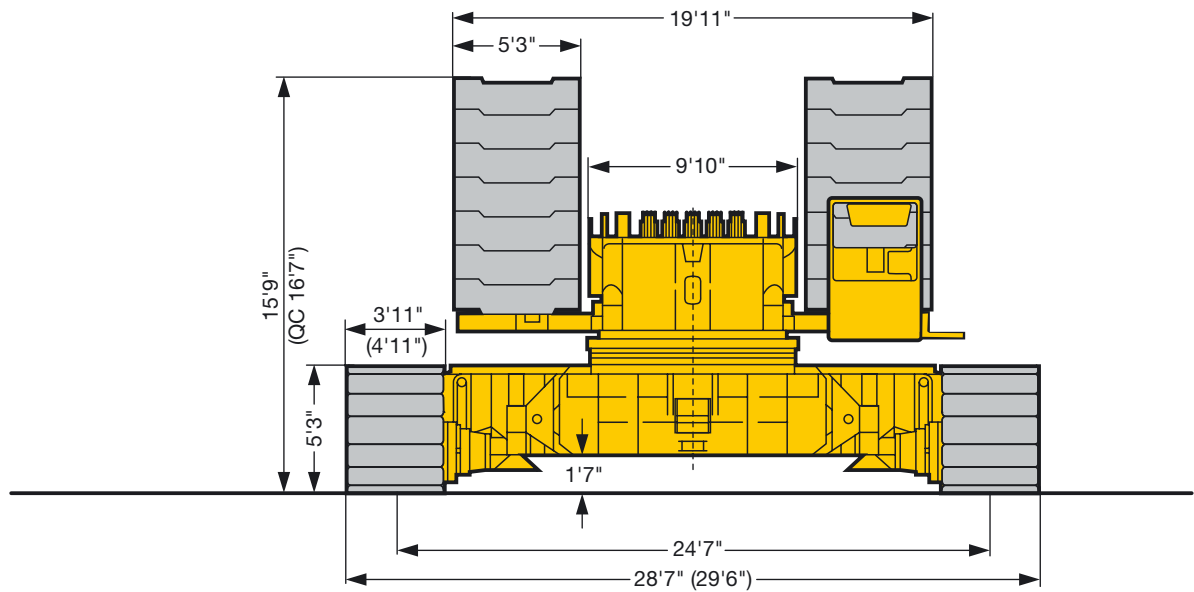
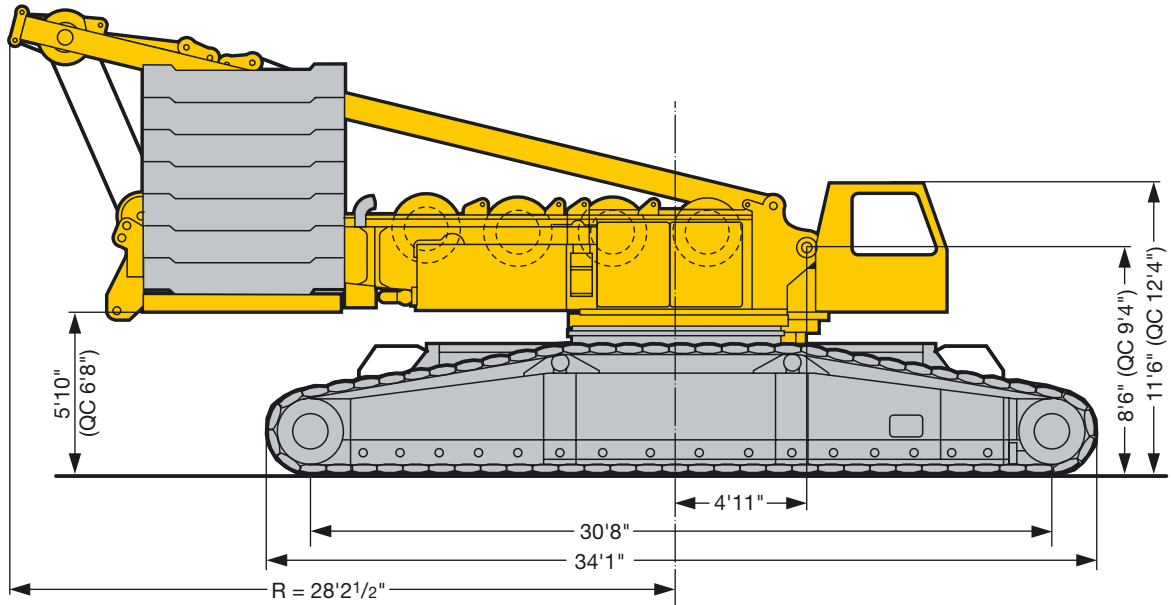




## LIFTING CHARTS - Crawler Cranes

### LIEBHERR MODEL LR1450-K - 450 TON CAPACITY

#### Dimensions Encombrement



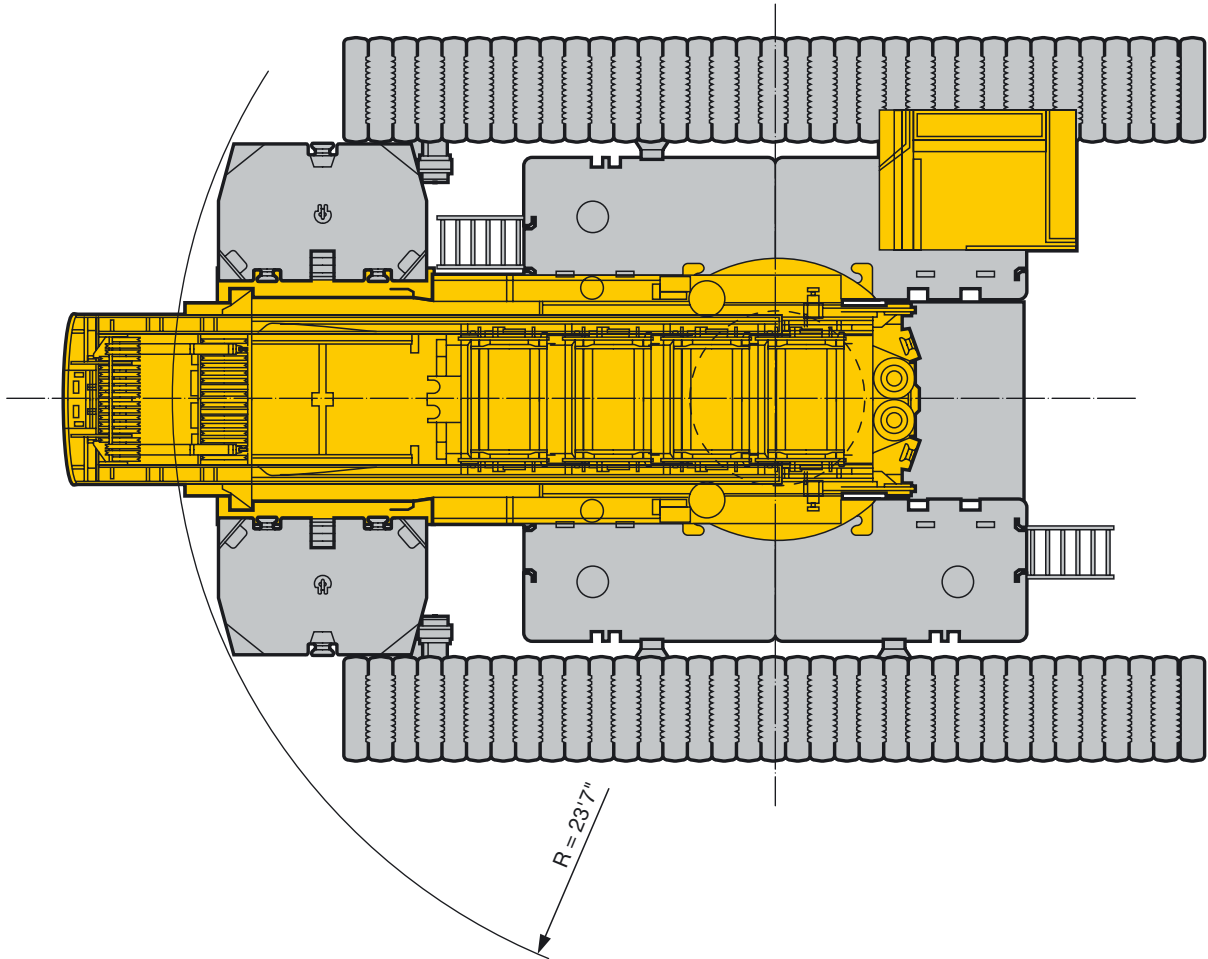
S1526

( ) Pad width 4'11" / Largeur de patin 4'11"

QC = Quick connection

# STERLING CRANE

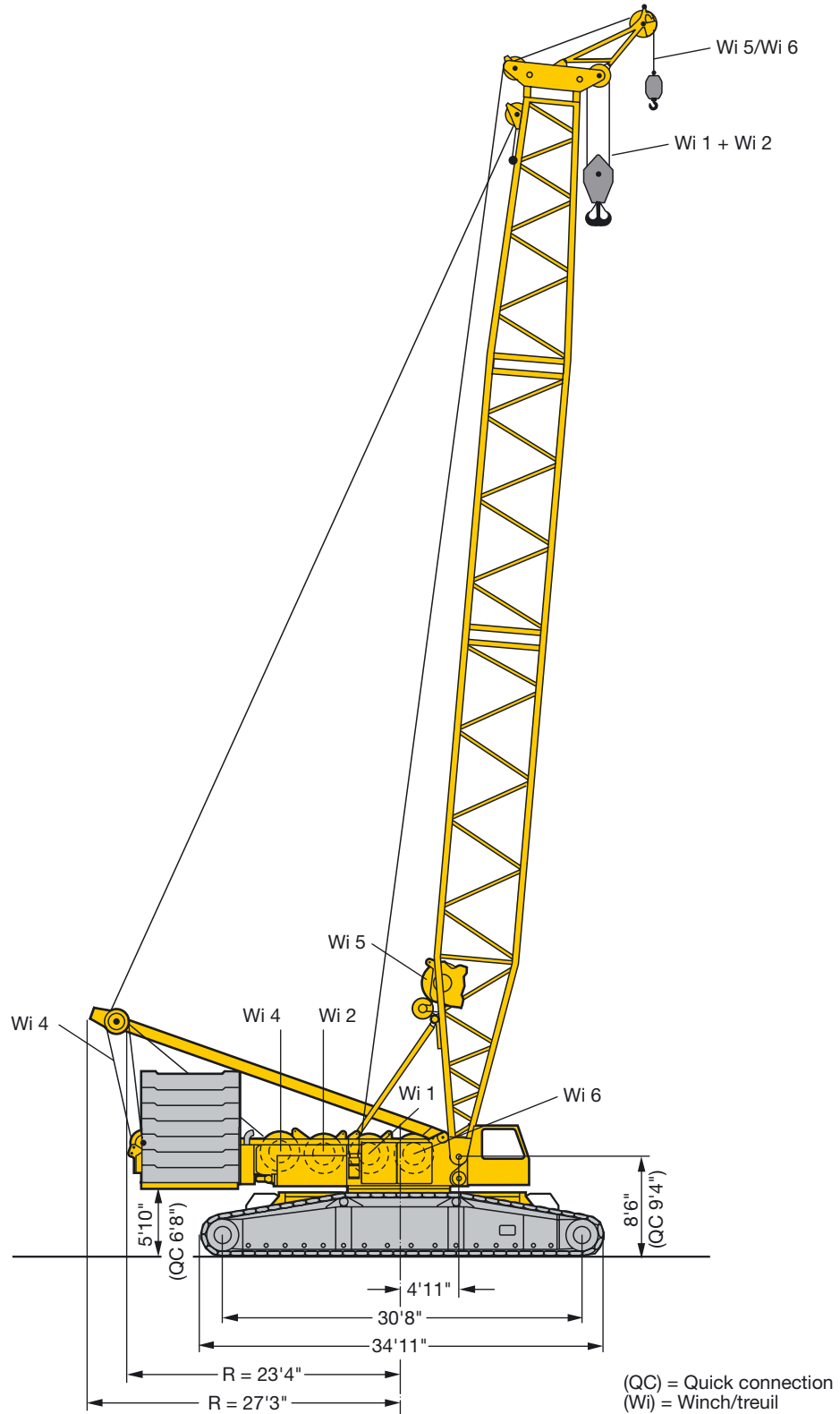
## Dimensions Encombremment



S1527

# STERLING CRANE

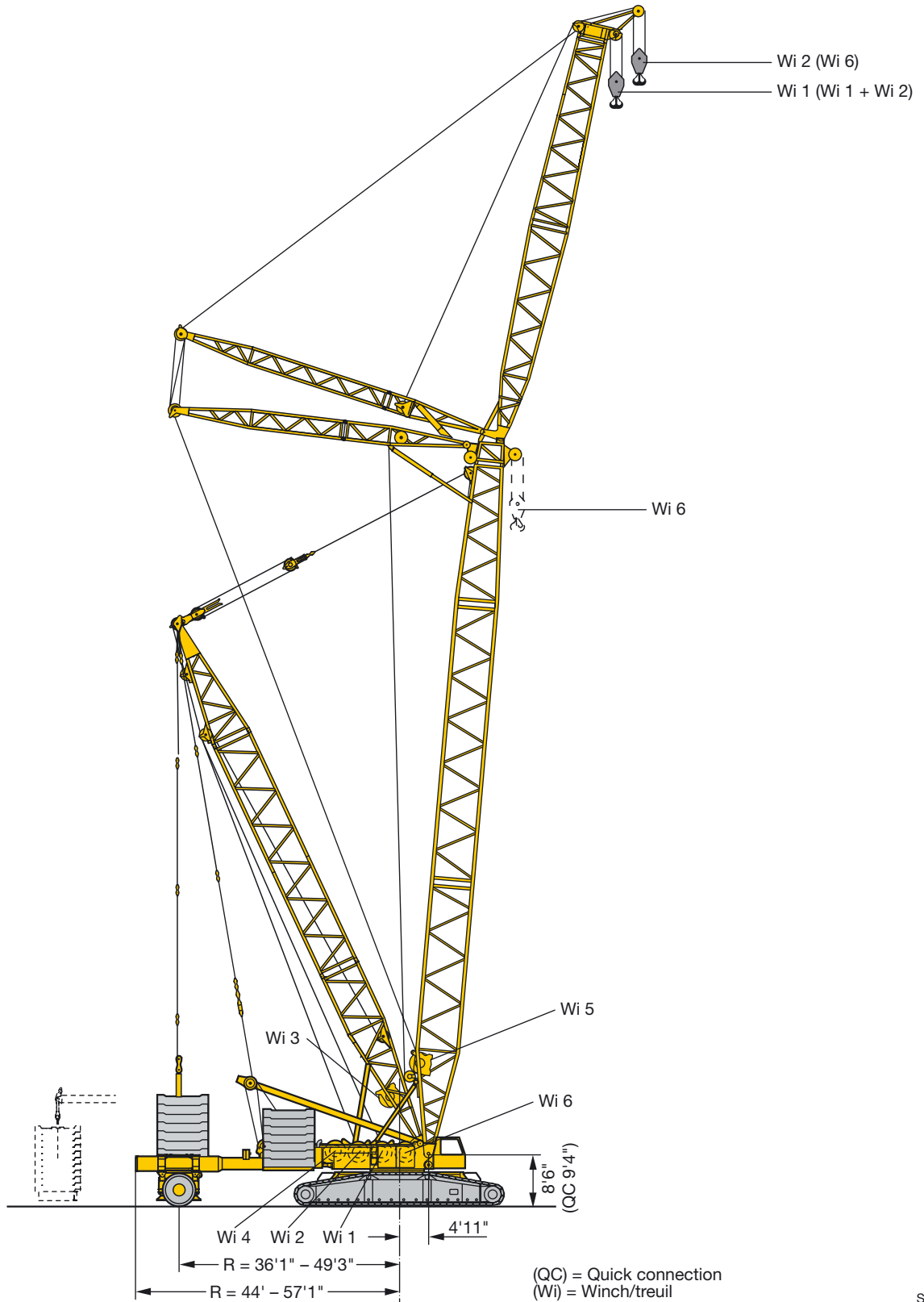
## Dimensions Encombremment



S1528

# STERLING CRANE

## Dimensions Encombrement

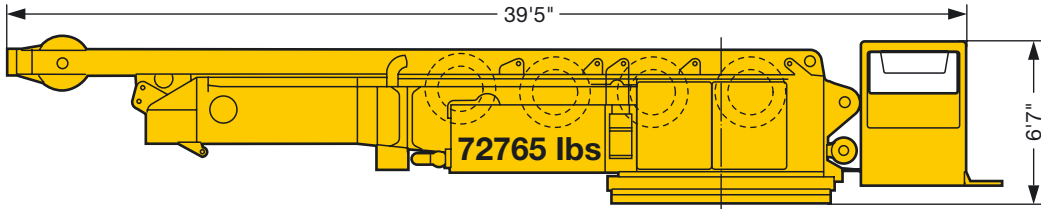


S1529

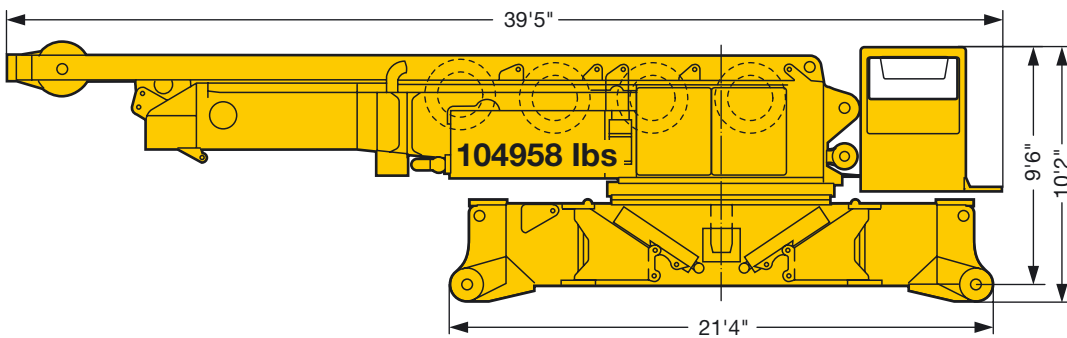
# STERLING CRANE

## Transportation plan Plan de transport

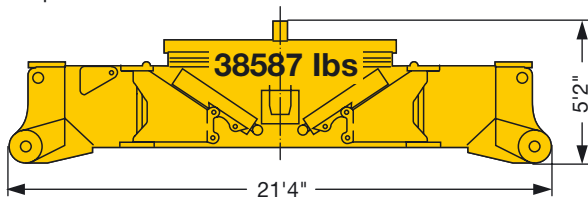
Superstructure with winch IV incl. rope and Quick Connection  
Partie tournante avec treuil IV incl. câble et dispositif de liaison



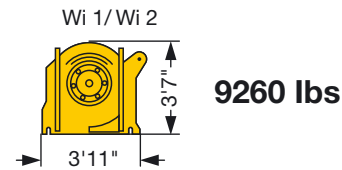
Superstructure with winch IV incl. rope and center section without Quick Connection  
Partie tournante avec treuil IV incl. câble et partie centrale sans dispositif de liaison



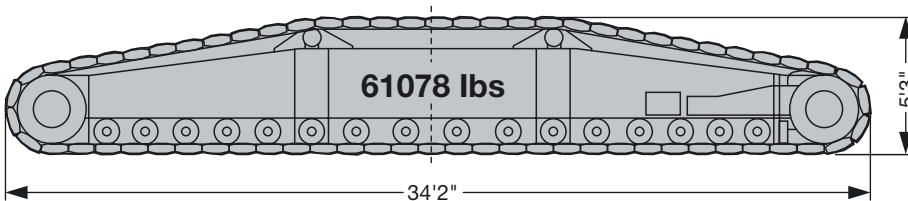
Crawler center section with Quick Connection  
Partie centrale avec dispositif de liaison



Winch 1/2 incl. ropes  
Treuil 1/2 incl. câble



Crawler  
Chenille



Wi = winch/treuil

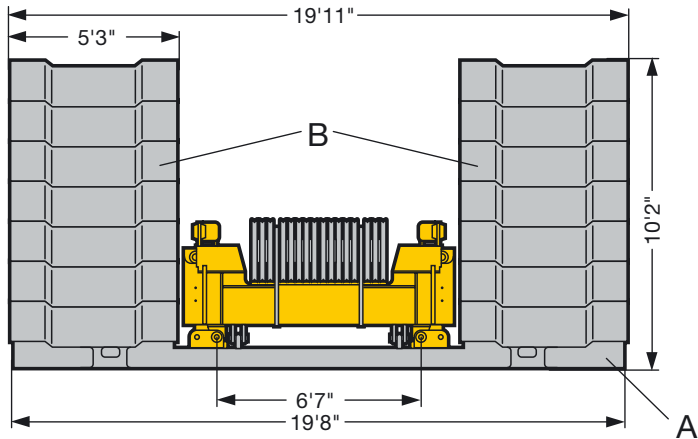
S1530

# STERLING CRANE

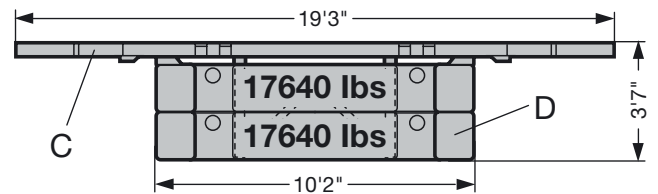
## Transportation plan Plan de transport

Counterweight versions  
Variantes de contrepoids

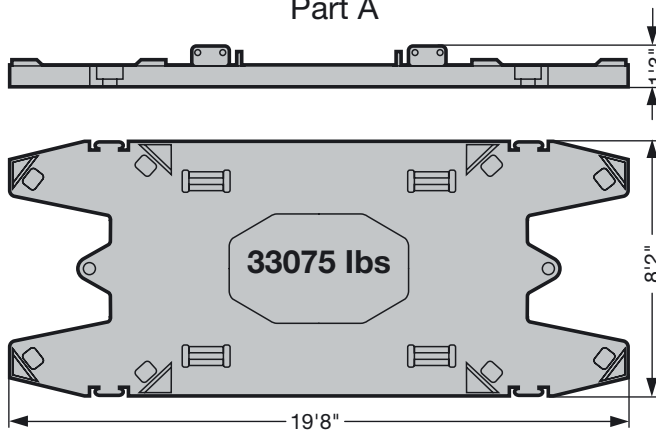
CWT at superstructure  
Contrepoids tourelle



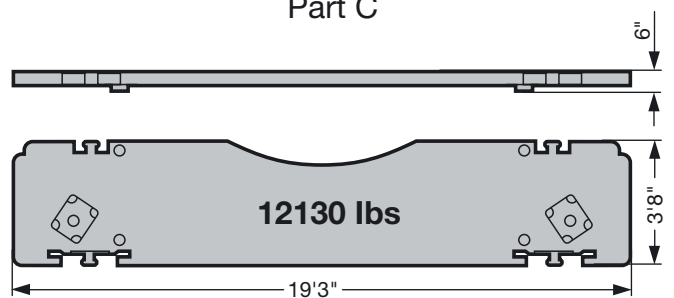
Central CWT  
Lest central



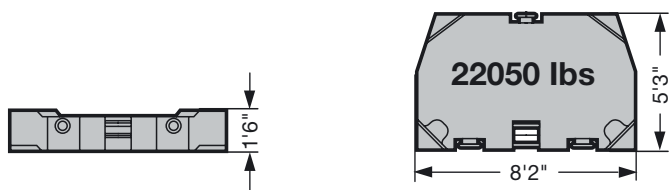
Part A



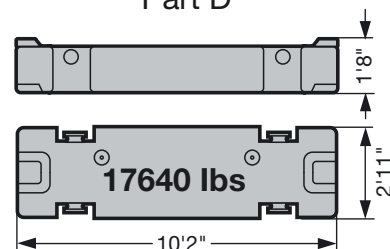
Part C



Part B



Part D



	Part A à 33075 lbs	Part B à 22050 lbs
297 kips	1 x	12 x
341 kips	1 x	14 x

	Part C à 12130 lbs	Part D à 17640 lbs
24 kips	2 x	0 x
95 kips	2 x	4 x

S1531

# STERLING CRANE

## Transportation plan Plan de transport

Boom intermediate sections Éléments de flèches intermédiaires	B x H	Base length Longueur de base	Transport length Longueur de transport	Weight lbs* Poids lbs*
LA 2620.10	9'2" x 7'10"	23'	24'3"	6400
		45'11"	47'3"	11900
LA 2620.8	9'2" x 7'10"	45'11"	47'3"	9700
NA 2115.10	7'7" x 5'11"	23'	24'3"	3300
		45'11"	47'3"	6200
NI 1812.10	6'7" x 4'11"	23'	24'3"	3000
		45'11"	47'3"	5500
D 2115.20	8'2" x 6'3"	23'	24'3"	5950
S 2620.20	9'2" x 7'10"	23'	24'3"	8160
		45'11"	47'3"	15200
W 2116.20	7'10" x 6'3"	23'	24'3"	3750
		45'11"	47'3"	6600

\* Weights incl. guy rods and bolts / Poids avec barres de haubanage et boulons

