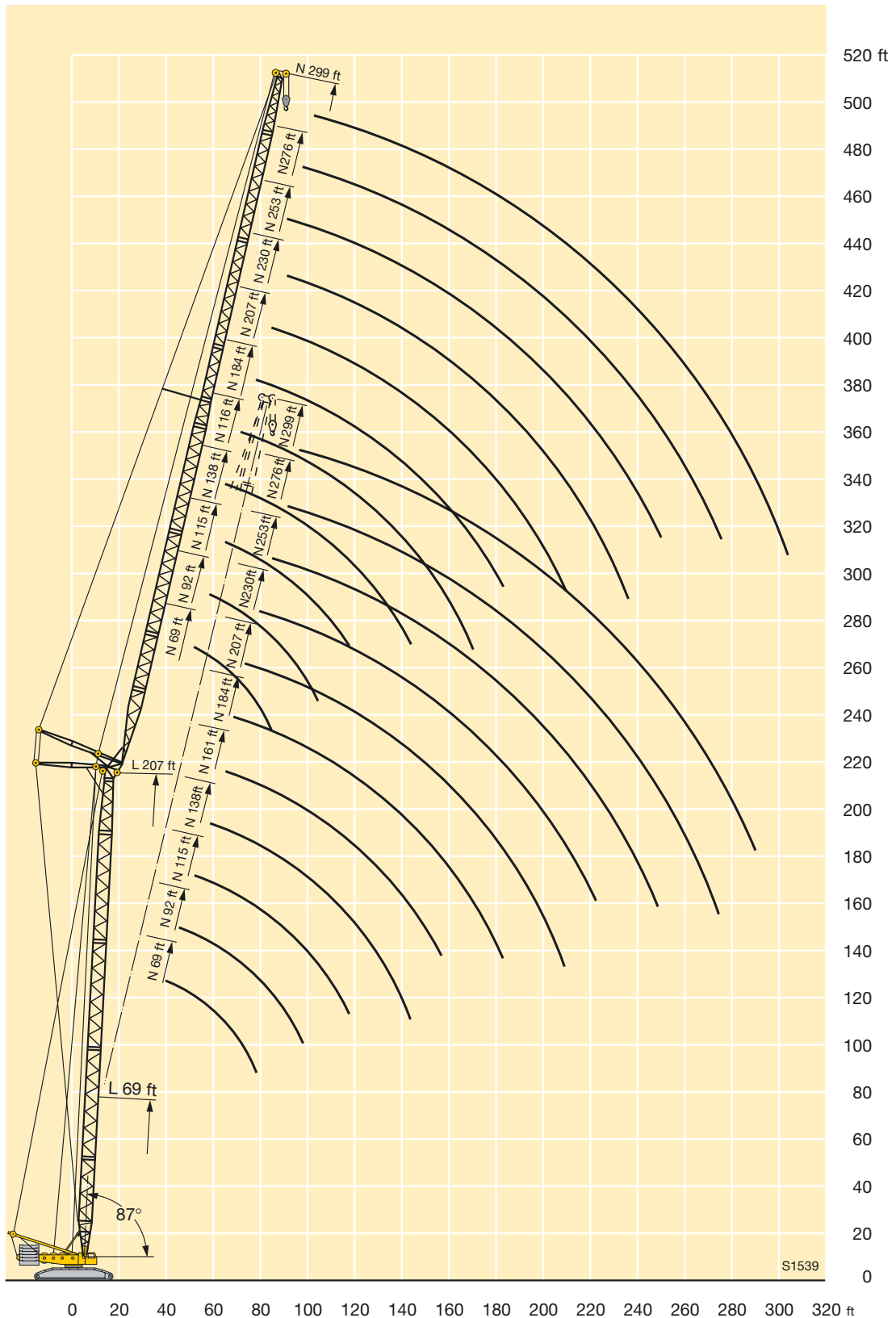




LIFTING CHARTS - Crawler Cranes

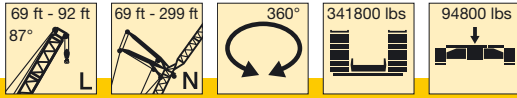
LIEBHERR MODEL LR1450-K - 450 TON CAPACITY

Lifting heights on LN boom/jib combination Hauteur de levage en configuration LN



STERLING CRANE

Lifting capacities on LN boom/jib combination Forces de levage en configuration LN

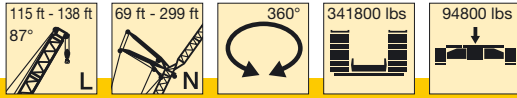


ft	69 ft										92 ft										ft			
	69 ft	92 ft	115 ft	138 ft	161 ft	184 ft	207 ft	230 ft	253 ft	276 ft	299 ft	69 ft	92 ft	115 ft	138 ft	161 ft	184 ft	207 ft	230 ft	253 ft		276 ft	299 ft	
40	284										276												40	
45	267										260												45	
50	250	232	213								244	222											50	
55	232	218	204	182							229	210	195										55	
60	214	205	195	175	156						213	199	187	162	145								60	
65	193	195	186	168	151						196	190	179	157	141								65	
70	176	179	175	160	146	123					179	181	171	152	137	115							70	
75	159	164	163	153	141	120	102				163	170	164	147	133	112	93.5						75	
80		151	150	146	136	117	100	83.5	68			157	155	142	129	109	91.5	79					80	
85		139	138	138	131	114	97.5	81.5	67			145	146	137	125	107	89.5	77.5					85	
90		131	129	128	126	111	95.5	80	65.5	54.2		135	136	132	121	104	87.5	76	63				90	
95		121	120	120	119	108	93	78.5	64.5	53.3	40.3		126	126	125	117	101	85.5	74.5	61.5	51.3	39.2	95	
100			112	112	111	105	91	76.5	63	52.4	39.5			118	118	113	98.5	83.5	72.5	60.5	50.4	38.5	100	
105			105	105	104	102	88.5	75	62	51.4	38.7			110	110	109	96	81.5	71	59.4	49.5	37.7	105	
110			100	99	98	97	86	73.5	60.5	50.5	37.9			105	104	103	93	79.5	69.5	58.3	48.7	36.9	110	
115			94.5	93.5	92.5	91.5	84	71.5	59.5	49.6	37.2			99	97.5	97	90.5	77.5	68	57.2	47.8	36.2	115	
120				88	87.5	86.5	81.5	70	58.2	48.6	36.4				92	92	88	75.5	66.5	56	46.9	35.4	120	
125				83.5	83	82	79.5	68	57	47.7	35.6				87	87	85	73.5	65	54.9	46	34.7	125	
130				80	78.5	77.5	76.5	66.5	55.8	46.8	34.8				83.5	82.5	81.5	71	63.5	53.7	45.2	33.9	130	
135				75	75	74	73	65	54.5	45.8	34				78.5	78.5	77.5	69	62	52.6	44.3	33.2	135	
140				69.5	71	70.5	69.5	63	53.3	44.9	33.2				72.5	74.5	74	67	60	51.4	43.4	32.4	140	
150					65	64	63	59.8	50.8	43	31.7					68	67	63	57.1	49.2	41.7	30.9	150	
160						58.4	57.4	56.1	48.4	41.2	30.1						61	59	53.9	46.9	40	29.4	160	
170						54.1	52.5	51.5	45.9	39.3	28.5						56.7	54.9	50.8	44.6	38.2	27.9	170	
180						49.1	48.1	47.3	43.5	37.5	27						51.1	50.5	47.7	42.3	36.5	26.4	180	
190							44.6	43.5	41	35.6	25.4							46.5	44.5	40	34.7	24.9	190	
200								41	40.2	38.6	33.7	23.8						42.5	41.4	37.7	33	23.3	200	
210									37.6	36.1	31.8	22.3							38.3	35.4	31.3	21.8	210	
220										34.8	33.4	30	20.7							35.1	33.2	29.5	20.3	220
230											31	28.1	19.1								30.9	27.8	18.8	230
240											28.8	26.2	17.6								28.6	26	17.3	240
250												24.4	16									24.3	15.8	250
260													22.5	14.4								22.6	14.3	260
270														20.7	12.9							20.8	12.8	270
280																							11.2	280

TAB 124110

STERLING CRANE

Lifting capacities on LN boom/jib combination Forces de levage en configuration LN



ft	115 ft										138 ft										ft			
	69 ft	92 ft	115 ft	138 ft	161 ft	184 ft	207 ft	230 ft	253 ft	276 ft	299 ft	69 ft	92 ft	115 ft	138 ft	161 ft	184 ft	207 ft	230 ft	253 ft		276 ft	299 ft	
40	272										243												40	
45	257										232												45	
50	242	217									222	195											50	
55	228	207	188								211	187	169										55	
60	213	197	182	158							200	180	163	143									60	
65	198	188	175	153							189	173	158	138									65	
70	181	180	168	148	133	110					178	165	152	134	121								70	
75	165	170	162	144	130	108	89.5				166	158	147	130	117	100	84						75	
80		159	154	139	126	105	87.5	74.5				151	141	126	114	97.5	82	70					80	
85		147	146	134	122	103	85.5	73				143	135	122	111	95.5	80.5	69					85	
90		136	137	130	119	100	83.5	72	60.5			136	130	118	108	93	78.5	67.5	56.4				90	
95		126	128	125	115	97.5	82	70.5	59.6	50.2		128	124	114	104	90.5	77	66	55.4	48			95	
100			120	119	111	95	80	69	58.6	49.3	37.3			118	109	101	88	75	64.5	54.4	47.1	36.2	100	
105			113	113	107	92.5	78	67.5	57.5	48.5	36.5			113	105	98	86	73.5	63.5	53.4	46.3	35.4	105	
110			107	107	104	90	76	66	56.4	47.7	35.8			107	101	94.5	83.5	71.5	62	52.3	45.5	34.7	110	
115			99	101	99.5	87.5	74.5	64.5	55.3	46.8	35.1			100	97	91.5	81	70	60.5	51.3	44.6	34	115	
120			89.5	95.5	94.5	85	72.5	63.5	54.3	46	34.4			92.5	93	88	78.5	68	59.2	50.3	43.8	33.3	120	
125				91	89.5	82.5	70.5	62	53.2	45.1	33.6				89	85	76.5	66.5	57.8	49.3	42.9	32.5	125	
130				85.5	85.5	80	68.5	60.5	52.1	44.3	32.9				84.5	81.5	74	64.5	56.5	48.3	42.1	31.8	130	
135				79	81.5	77.5	67	59.1	51	43.5	32.2				79	78.5	71.5	63	55.1	47.3	41.3	31.1	135	
140				72.5	77.5	75	65	57.7	50	42.6	31.5				73.5	75.5	69	61	53.7	46.3	40.4	30.4	140	
150					69	69.5	61	54.8	47.8	40.9	30					69	64.5	57.5	51	44.3	38.7	28.9	150	
160						64	57.4	52	45.7	39.3	28.6						59.8	54	48.2	42.3	37.1	27.5	160	
170						57.7	53.6	49.2	43.5	37.6	27.1						55	50.5	45.5	40.3	35.4	26	170	
180						50.6	49.9	46.4	41.4	35.9	25.7						50.3	46.9	42.7	38.2	33.7	24.6	180	
190							46.1	43.5	39.2	34.2	24.2							43.4	40	36.2	32	23.1	190	
200							41.9	40.7	37.1	32.5	22.8							39.9	37.2	34.2	30.3	21.7	200	
210								37.9	34.9	30.9	21.3								34.5	32.2	28.7	20.2	210	
220								35.1	32.8	29.2	19.9									31.7	30.2	27	18.8	220
230									30.6	27.5	18.4										28.2	25.3	17.3	230
240									28.5	25.8	17										26.1	23.6	15.9	240
250										24.1	15.5											21.9	14.4	250
260										22.5	14.1											20.3	13	260
270										20.8	12.6											18.6	11.5	270
280											11.2												10.1	280

TAB 124110

STERLING CRANE

Lifting capacities on LN boom/jib combination Forces de levage en configuration LN

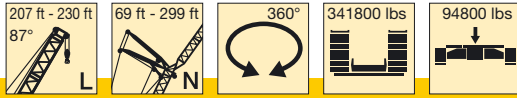


ft	161 ft										184 ft										ft			
	69 ft	92 ft	115 ft	138 ft	161 ft	184 ft	207 ft	230 ft	253 ft	276 ft	299 ft	69 ft	92 ft	115 ft	138 ft	161 ft	184 ft	207 ft	230 ft	253 ft		276 ft	299 ft	
50	212										179													50
55	202	177	156								172	152												55
60	191	170	151	132							164	146	132	114										60
65	181	163	146	128							157	141	128	111										65
70	170	157	141	124	112						150	136	124	108	97									70
75	160	150	136	121	109	95.5					142	131	120	105	94.5	82.5								75
80		143	131	117	106	93.5	79				125	116	102	92.5	81	68								80
85		136	126	113	103	91	77.5				120	112	99	90	79	66.5								85
90		129	121	110	101	89	75.5	65	52.1		115	108	96	87.5	77	65	56.3							90
95		122	116	106	97.5	86.5	74	63.5	51.2	45.8	110	104	93.5	85	75	63.5	55.2	46.9						95
100		114	111	103	95	84.5	72	62.5	50.3	45	104	100	90.5	82.5	73.5	62.5	54.1	46.1	39.5					100
105			106	99	92	82	70.5	61	49.5	44.2	96	96	87.5	80	71.5	61	53	45.3	38.8	30.9				105
110			101	95.5	89	80	69	59.8	48.6	43.5	92	92	84.5	78	69.5	59.4	51.9	44.5	38.1	30.2				110
115			95.5	92	86	77.5	67	58.5	47.7	42.7	88	88	81.5	75.5	67.5	58	50.8	43.7	37.4	29.6				115
120			90.5	88	83.5	75.5	65.5	57.3	46.9	41.9	84	84	78.5	73	66	56.6	49.7	42.9	36.7	29				120
125				84.5	80.5	73	64	56	46	41.1			75.5	70.5	64	55.1	48.6	42.1	36	28.4				125
130				81	77.5	70.5	62	54.7	45.1	40.3			72.5	68	62	53.7	47.5	41.3	35.4	27.7				130
135				77	74.5	68.5	60.5	53.4	44.2	39.6			69.5	65.5	60	52.3	46.4	40.5	34.7	27.1				135
140				73.5	72	66	58.8	52.1	43.4	38.8			66.5	63.5	58.3	50.9	45.3	39.7	34	26.5				140
150					66	61.5	55.4	49.6	41.6	37.2				58.5	54.6	48	43.2	38.1	32.6	25.2				150
160					59.9	57.1	52.1	47	39.9	35.7				53.6	50.8	45.1	41	36.4	31.3	23.9				160
170					52.5	52.5	48.7	44.5	38.1	34.1				48.8	47.1	42.3	38.8	34.8	29.9	22.7				170
180					48	45.3	41.9	36.4	32.6	23.3					43.3	39.4	36.6	33.2	28.5	21.4				180
190						42	39.3	34.6	31	22						36.6	34.4	31.6	27.1	20.2				190
200							38.6	36.8	32.9	29.4	20.6						33.7	32.2	30	25.8	18.9			200
210								34.2	31.1	27.9	19.3							30	28.4	24.4	17.6			210
220									31.7	29.4	26.3	18							27.8	26.8	23	16.4		220
230									29.1	27.6	24.8	16.6							25.6	25.2	21.7	15.1		230
240										25.9	23.2	15.3								23.6	20.3	13.9		240
250											21.6	14									18.9	12.6		250
260											20.1	12.7									17.6	11.3		260
270											18.5	11.3									16.2	10.1		270
280												10										8.8		280

TAB 124110

STERLING CRANE

Lifting capacities on LN boom/jib combination Forces de levage en configuration LN



ft	207 ft											230 ft							ft			
	69 ft	92 ft	115 ft	138 ft	161 ft	184 ft	207 ft	230 ft	253 ft	276 ft	299 ft	92 ft	115 ft	138 ft	161 ft	184 ft	207 ft	230 ft		253 ft		
50	159																				50	
55	153	135										115									55	
60	147	130	116									112	97.5								60	
65	142	126	113									108	95								65	
70	136	122	110	97								105	92.5	82							70	
75	131	118	107	94.5	82.5							102	90	80	69.5						75	
80	125	114	104	92	81	71.5	61.5					98.5	87.5	77.5	68.5	59.2					80	
85	119	109	101	89.5	79	69.5	60					95	85	75.5	67	58.1					85	
90		105	98	87	77	68	58.9	49.8				91.5	82.5	73.5	65.5	56.9	50.9				90	
95		101	95	84.5	75	66.5	57.6	48.9	43.6			88.5	80	71.5	64	55.8	49.8	43.6	37		95	
100		97	92	82	73	65	56.4	47.9	42.8	37.3		85	77.5	69.5	62.5	54.6	48.8	42.7	36.3		100	
105			89	79.5	71.5	63.5	55.1	47	42.1	36.6	28.7		75	67	61	53.5	47.8	41.9	35.7		105	
110			86	77	69.5	62	53.9	46	41.3	36	28.1		72.5	65	59.5	52.3	46.8	41.1	34.9		110	
115			83	74.5	67.5	60	52.6	45.1	40.5	35.3	27.5		70	63	58.1	51.2	45.8	40.2	34.2		115	
120			80	72	65.5	58.7	51.3	44.1	39.8	34.7	26.9		67.5	61	56.6	50	44.8	39.4	33.5		120	
125				69.5	63.5	57.1	50.1	43.2	39	34	26.3			58.8	55.2	48.8	43.7	38.5	32.9		125	
130				67	62	55.5	48.8	42.2	38.2	33.4	25.7			56.7	53.7	47.7	42.7	37.7	32.1		130	
135				64	59.9	53.9	47.6	41.3	37.5	32.7	25.1			54.6	52.3	46.5	41.7	36.9	31.4		135	
140				61.5	57.9	52.4	46.3	40.3	36.7	32.1	24.5			52.5	50.8	45.4	40.7	36	30.7		140	
150					54.1	49.2	43.8	38.4	35.1	30.7	23.4				47.9	43.1	38.7	34.3	29.3		150	
160					50.3	46.1	41.3	36.5	33.6	29.4	22.2				45	40.8	36.6	32.7	27.9		160	
170					46.5	42.9	38.7	34.6	32.1	28.1	21				42.1	38.5	34.6	31	26.5		170	
180						39.8	36.2	32.7	30.5	26.8	19.8					36.1	32.6	29.3	25.2		180	
190							33.7	30.8	29	25.5	18.7						30.5	27.6	23.7		190	
200								31.2	28.9	27.5	24.2	17.5					28.5	25.9	22.3		200	
210									27	25.9	22.9	16.3						24.3	20.9		210	
220										25.1	24.4	21.6	15.1						22.6	19.6		220
230										22.8	20.3	14						20.9	18.1		230	
240										21.3	19	12.8							16.7		240	
250											17.7	11.6									250	
260											16.4	10.4									260	
270											15.1	9.3									270	
280												8.1									280	
290												6.9									290	
300												5.7									300	

TAB 124110