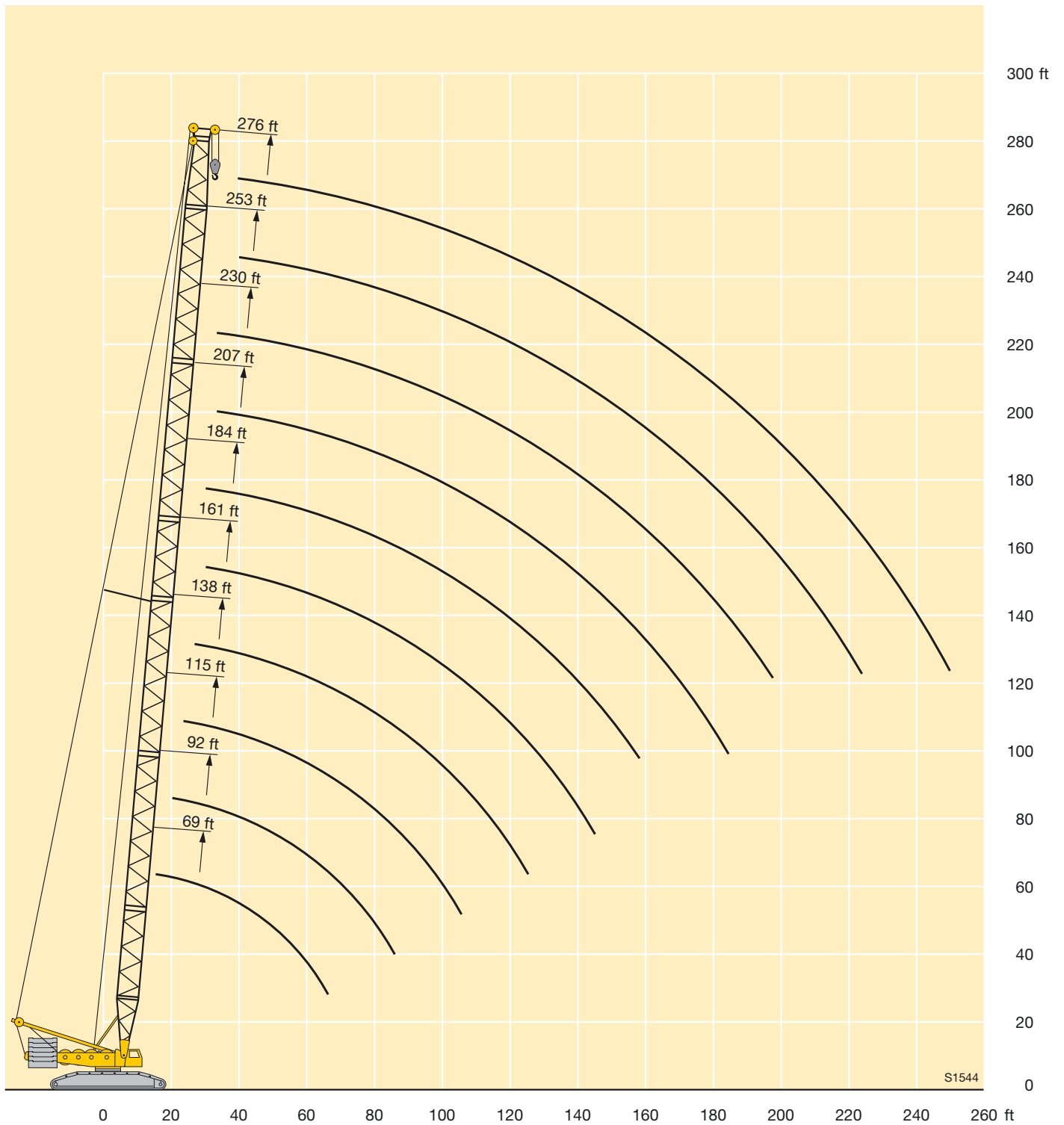




LIFTING CHARTS - Crawler Cranes

LIEBHERR MODEL LR1450-K - 450 TON CAPACITY

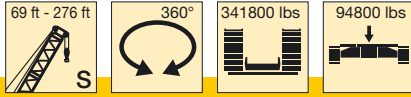
Lifting heights on S boom Hauteur de levage à la flèche principale S



S1544

STERLING CRANE

Lifting capacities on S boom Forces de levage à la flèche principale S



| ft | 69 ft | 92 ft | 115 ft | 138 ft | 161 ft | 184 ft | 207 ft | 230 ft | 253 ft | 276 ft | ft |
|-----|-------|-------|--------|--------|--------|--------|--------|--------|--------|--------|-----|
| 15 | 772 | | | | | | | | | | 15 |
| 16 | 772 | | | | | | | | | | 16 |
| 17 | 762 | | | | | | | | | | 17 |
| 18 | 746 | | | | | | | | | | 18 |
| 19 | 712 | | | | | | | | | | 19 |
| 20 | 679 | 663 | | | | | | | | | 20 |
| 21 | 649 | 634 | | | | | | | | | 21 |
| 22 | 621 | 608 | | | | | | | | | 22 |
| 23 | 595 | 583 | 596 | 581 | | | | | | | 23 |
| 24 | 574 | 562 | 574 | 561 | | | | | | | 24 |
| 26 | 531 | 519 | 531 | 519 | | | | | | | 26 |
| 28 | 495 | 506 | 496 | 485 | 474 | | | | | | 28 |
| 30 | 462 | 473 | 464 | 453 | 443 | 420 | | | | | 30 |
| 32 | 434 | 444 | 436 | 425 | 417 | 394 | | | | | 32 |
| 34 | 427 | 419 | 410 | 401 | 392 | 370 | 348 | 319 | | | 34 |
| 36 | 403 | 395 | 387 | 378 | 370 | 348 | 329 | 310 | | | 36 |
| 38 | 382 | 375 | 367 | 359 | 350 | 330 | 311 | 295 | 271 | | 38 |
| 40 | 363 | 356 | 349 | 340 | 331 | 312 | 295 | 280 | 265 | 239 | 40 |
| 45 | 322 | 315 | 309 | 301 | 291 | 275 | 261 | 248 | 236 | 222 | 45 |
| 50 | 281 | 278 | 275 | 268 | 259 | 246 | 234 | 222 | 211 | 201 | 50 |
| 55 | 246 | 245 | 243 | 238 | 232 | 221 | 210 | 200 | 190 | 182 | 55 |
| 60 | 217 | 216 | 215 | 212 | 209 | 199 | 190 | 181 | 172 | 164 | 60 |
| 65 | 194 | 193 | 192 | 189 | 188 | 182 | 173 | 165 | 157 | 150 | 65 |
| 70 | | 174 | 173 | 171 | 169 | 166 | 159 | 151 | 144 | 137 | 70 |
| 75 | | 159 | 157 | 155 | 153 | 151 | 146 | 139 | 132 | 126 | 75 |
| 80 | | 145 | 144 | 141 | 140 | 138 | 134 | 128 | 122 | 116 | 80 |
| 85 | | 134 | 132 | 129 | 128 | 126 | 124 | 118 | 112 | 107 | 85 |
| 90 | | | 122 | 119 | 118 | 116 | 114 | 110 | 104 | 99 | 90 |
| 95 | | | 113 | 111 | 109 | 107 | 105 | 102 | 97 | 92 | 95 |
| 100 | | | 106 | 103 | 101 | 98.5 | 96.5 | 95 | 90 | 85 | 100 |
| 105 | | | | 95.5 | 94 | 91.5 | 89.5 | 87.5 | 83.5 | 79 | 105 |
| 110 | | | | 89.5 | 87.5 | 85.5 | 83.5 | 81.5 | 78 | 73.5 | 110 |
| 115 | | | | 84 | 82 | 79.5 | 77.5 | 75.5 | 72.5 | 68.5 | 115 |
| 120 | | | | 79 | 77 | 74.5 | 72.5 | 70.5 | 67.5 | 63.5 | 120 |
| 125 | | | | | 72.5 | 70 | 67.5 | 65.5 | 63 | 58.8 | 125 |
| 130 | | | | | 68 | 65.5 | 63.5 | 61 | 58.5 | 54.4 | 130 |
| 135 | | | | | 64.5 | 62 | 59.7 | 57.4 | 54.6 | 50.6 | 135 |
| 140 | | | | | 61 | 58.3 | 56.1 | 53.8 | 50.9 | 46.9 | 140 |
| 150 | | | | | | 52 | 49.6 | 47.2 | 44.1 | 40.1 | 150 |
| 160 | | | | | | | 44 | 41.3 | 38.1 | 34.1 | 160 |
| 170 | | | | | | | 38.9 | 36 | 32.9 | 28.8 | 170 |
| 180 | | | | | | | 34.6 | 31.6 | 28.4 | 24.1 | 180 |
| 190 | | | | | | | | 27.7 | 24.2 | 19.7 | 190 |
| 200 | | | | | | | | | 20.4 | 15.8 | 200 |
| 210 | | | | | | | | | 17 | 12.8 | 210 |
| 220 | | | | | | | | | 14.3 | 10.6 | 220 |
| 230 | | | | | | | | | | 8.6 | 230 |
| 240 | | | | | | | | | | 6.8 | 240 |

TAB 124056 / 124057