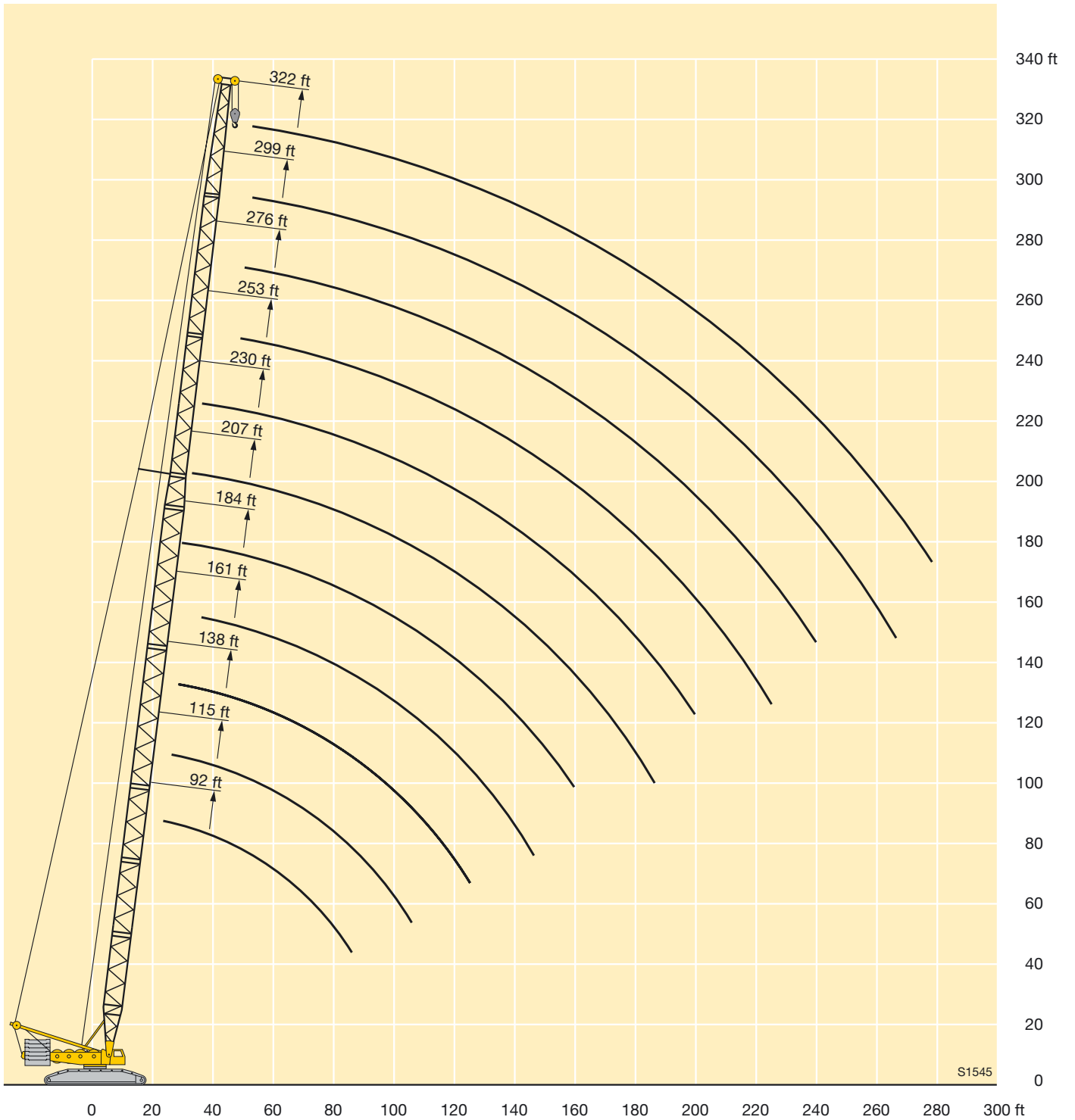




LIFTING CHARTS - Crawler Cranes

LIEBHERR MODEL LR1450-K - 450 TON CAPACITY


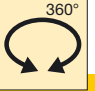
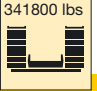



Lifting heights on Sw boom Hauteur de levage à la flèche principale Sw



S1545

STERLING CRANE

Lifting capacities on Sw boom Forces de levage à la flèche principale Sw

	 92 ft - 322 ft Sw	 360°	 341800 lbs	 94800 lbs									
 ft	92 ft	115 ft	138 ft	161 ft	184 ft	207 ft	230 ft	253 ft	276 ft	299 ft	322 ft	 ft	
20	397											20	
21	397											21	
22	397	397										22	
23	397	397	397									23	
24	397	397	397									24	
26	397	397	397									26	
28	397	397	397	397	328							28	
30	397	397	397	395	319	292						30	
32	393	397	385	390	309	281						32	
34	387	391	366	379	299	271	243					34	
36	367	380	397	365	289	261	238					36	
38	397	368	360	352	280	252	234	241				38	
40	365	359	352	339	272	244	230	239	220	197		40	
45	325	319	314	301	252	224	221	232	216	185		45	
50	286	283	280	269	233	206	213	219	207	180	160	50	
55	251	251	249	242	216	190	204	202	194	176	158	55	
60	222	221	220	219	201	176	192	184	177	170	155	60	
65	199	199	197	195	187	163	176	169	162	157	149	65	
70	181	180	179	177	174	152	163	156	150	145	138	70	
75	165	164	163	161	160	141	151	144	138	134	128	75	
80	151	151	149	147	146	130	140	134	128	124	119	80	
85	140	139	138	135	134	120	130	125	119	116	110	85	
90		129	128	125	124	112	121	116	112	108	103	90	
95		120	119	117	115	106	112	109	104	101	96	95	
100		112	111	109	108	101	104	102	98	95	90	100	
105			104	102	100	95.5	96.5	95	92	89	84.5	105	
110			98	95.5	94	91	90.5	88.5	86.5	83.5	79	110	
115			92.5	90	88.5	86	84.5	83	81	79	74.5	115	
120			87	85	83.5	81	79.5	77.5	76	74.5	70	120	
125				80	79	76.5	74.5	73	71.5	70	66	125	
130				76	74.5	72.5	70.5	68.5	67	66	62	130	
135				72.5	71	68.5	66.5	64.5	63	62.5	58.4	135	
140				69	67.5	65	63	61	59.5	58.8	54.8	140	
150					61	58.6	56.6	54.6	52.9	52.2	48.1	150	
160						53	51	48.9	47.2	46.3	42.2	160	
170						48	46.1	44	42.2	41.1	37	170	
180						42.4	42	39.8	37.8	36.6	32.5	180	
190							38.4	36	33.8	32.5	28.3	190	
200								32.4	30.2	28.8	24.5	200	
210								29.3	26.9	25.4	21	210	
220								26.5	24.1	22.4	17.8	220	
230									21.5	19.6	15.1	230	
240										17	12.9	240	
250										14.6	11.2	250	
260										13.1	9.6	260	
270											8.2	270	

TAB 124009 / 124010