

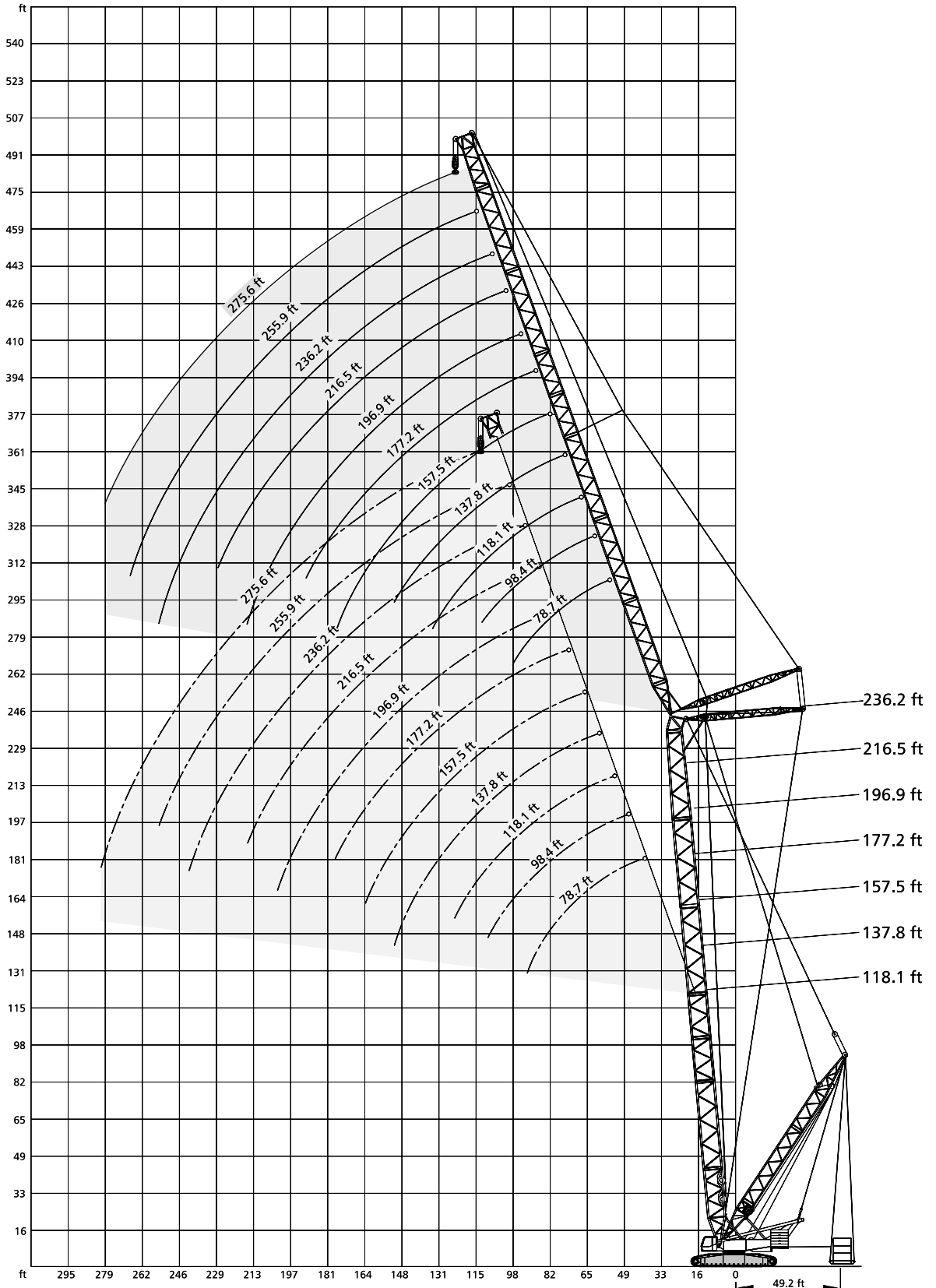


LIFTING CHARTS - Crawler Cranes

DEMAG MODEL CC 2500 - 500 TON CAPACITY

Working ranges luffing fly jib with SL, main boom 85°



SWSL





STERLING CRANE

Lifting capacities luffing fly jib with SL, main boom 85°

265,000 lb   25.6 ft SL-Radius 49.2 ft 360° DIN/ISO

118.1 ft Main boom									
									
Fly jib	Radius	lb	0	132.3	220.5	308.6	396.8	440.9	
				1,000 lb					
ft	ft	0	132.3	220.5	308.6	396.8	440.9		
	52	238.1	388.0	489.4	496.0	-	-	496.0	
	59	200.6	330.7	416.7	493.8	-	-	493.8	
	65	174.2	286.6	361.6	438.7	487.2	-	487.2	
SWSL	78.7 ft	72	152.1	253.5	319.7	388.0	429.9	429.9	
		79	134.5	227.1	286.6	346.1	370.4	370.4	
		85	121.3	205.0	260.1	313.1	-	317.5	
		92	110.2	185.2	235.9	269.0	-	269.0	
								440.9	
		52	235.9	385.8	469.6	474.0	-	478.4	
		59	198.4	328.5	414.5	469.6	-	474.0	
		65	172.0	284.4	359.4	436.5	-	447.5	
		72	149.9	251.3	317.5	385.8	416.7	416.7	
SWSL	98.4 ft	79	134.5	224.9	284.4	346.1	388.0	388.0	
		85	119.0	202.8	257.9	313.1	343.9	343.9	
		92	108.0	183.0	233.7	284.4	-	304.2	
		98	99.2	167.6	213.8	262.4	-	269.0	
		111	83.8	143.3	183.0	207.2	-	207.2	
								440.9	
		59	198.4	328.5	377.0	-	-	383.6	
		65	172.0	284.4	359.4	374.8	-	377.0	
		72	149.9	251.3	317.5	361.6	-	363.8	
		79	132.3	222.7	284.4	343.9	-	348.3	
SWSL	118.1 ft	85	119.0	200.6	255.7	310.9	-	330.7	
		92	108.0	183.0	233.7	284.4	-	313.1	
		98	97.0	167.6	213.8	260.1	-	280.0	
		111	81.6	143.3	183.0	222.7	-	227.1	
		124	70.5	123.5	158.7	183.0	-	183.0	
								440.9	
		65	169.8	282.2	315.3	-	-	324.1	
		72	147.7	249.1	315.3	-	-	321.9	
		79	130.1	222.7	282.2	313.1	-	313.1	
		85	116.8	200.6	253.5	297.6	-	297.6	
SWSL	137.8 ft	92	105.8	180.8	231.5	282.2	-	284.4	
		98	94.8	165.3	211.6	257.9	-	266.8	
		111	79.4	141.1	180.8	220.5	-	235.9	
		124	68.3	121.3	156.5	194.0	-	196.2	
		138	59.5	108.0	138.9	163.1	-	163.1	
		151	52.9	94.8	123.5	132.3	-	132.3	
								352.7	
		72	147.7	249.1	260.1	-	-	262.4	
		79	130.1	220.5	255.7	-	-	255.7	
		85	116.8	198.4	244.7	-	-	246.9	
		92	105.8	180.8	231.5	-	-	233.7	
SWSL	157.5 ft	98	94.8	165.3	211.6	-	-	222.7	
		111	79.4	141.1	180.8	200.6	-	200.6	
		124	68.3	121.3	156.5	178.6	-	178.6	
		138	59.5	105.8	138.9	160.9	-	160.9	
		151	50.7	94.8	123.5	145.5	-	145.5	
		164	44.1	83.8	110.2	123.5	-	123.5	
								352.7	
		79	130.1	218.3	220.5	-	-	222.7	
		85	114.6	198.4	218.3	-	-	220.5	
		92	103.6	178.6	211.6	-	-	213.8	
		98	94.8	163.1	205.0	-	-	205.0	
SWSL	177.2 ft	111	79.4	138.9	178.6	-	-	187.4	
		124	66.1	119.0	156.5	169.8	-	169.8	
		138	57.3	105.8	136.7	154.3	-	154.3	
		151	48.5	92.6	121.3	138.9	-	138.9	
		164	44.1	83.8	110.2	125.7	-	125.7	
		177	37.5	75.0	99.2	110.2	-	110.2	

118.1 ft Main boom									
									
Fly jib	Radius	lb	0	132.3	220.5	308.6	352.7		
				1,000 lb					
ft	ft	0	132.3	220.5	308.6	352.7			
	85	114.6	180.8	-	-	-	185.2		
	92	103.6	178.6	183.0	-	-	183.0		
	98	94.8	163.1	180.8	-	-	183.0		
	111	79.4	138.9	178.6	-	-	178.6		
	124	66.1	119.0	154.3	174.2	-	174.2		
SWSL	196.9 ft	138	57.3	103.6	136.7	167.6	167.6		
		151	48.5	92.6	121.3	149.9	149.9		
		164	44.1	81.6	108.0	132.3	132.3		
		177	37.5	75.0	99.2	114.6	114.6		
		190	33.1	66.1	90.4	99.2	99.2		
		203	28.7	61.7	81.6	83.8	83.8		
								352.7	
		92	101.4	147.7	-	-	154.3		
		98	92.6	147.7	-	-	152.1		
		111	77.2	136.7	147.7	-	149.9		
		124	63.9	119.0	143.3	-	143.3		
SWSL	216.5 ft	138	55.1	103.6	134.5	-	138.9		
		151	48.5	90.4	119.0	132.3	132.3		
		164	41.9	81.6	108.0	125.7	125.7		
		177	35.3	72.8	97.0	119.0	119.0		
		190	30.9	66.1	88.2	105.8	105.8		
		203	26.5	59.5	79.4	90.4	90.4		
		216	24.3	55.1	72.8	79.4	79.4		
								352.7	
		98	90.4	123.5	-	-	127.9		
		111	75.0	123.5	-	-	127.9		
		124	63.9	116.8	125.7	-	127.9		
		138	52.9	101.4	123.5	-	125.7		
SWSL	236.2 ft	151	46.3	90.4	119.0	123.5	123.5		
		164	39.7	79.4	105.8	119.0	119.0		
		177	35.3	70.5	94.8	116.8	116.8		
		190	28.7	63.9	86.0	108.0	108.0		
		203	26.5	57.3	79.4	94.8	94.8		
		216	22.0	52.9	72.8	83.8	83.8		
		230	19.8	48.5	66.1	72.8	72.8		
		243	17.6	44.1	61.7	61.7	61.7		
								352.7	
		111	75.0	97.0	-	-	101.4		
		124	61.7	97.0	-	-	99.2		
		138	52.9	94.8	97.0	-	97.0		
		151	46.3	88.2	94.8	-	94.8		
SWSL	255.9 ft	164	39.7	79.4	92.6	-	92.6		
		177	33.1	70.5	90.4	-	92.6		
		190	28.7	63.9	86.0	90.4	90.4		
		203	24.3	57.3	77.2	88.2	88.2		
		216	22.0	52.9	70.5	86.0	86.0		
		230	17.6	46.3	66.1	75.0	75.0		
		243	15.4	44.1	59.5	66.1	66.1		
		256	13.2	39.7	55.1	57.3	57.3		
								264.6	
		111	72.8	77.2	-	-	79.4		
		124	61.7	75.0	-	-	77.2		
		138	50.7	75.0	-	-	77.2		
		151	44.1	75.0	-	-	77.2		
		164	37.5	72.8	75.0	-	75.0		
		177	30.9	68.3	72.8	-	72.8		
SWSL	275.6 ft	190	26.5	61.7	70.5	-	70.5		
		203	22.0	55.1	68.3	-	68.3		
		216	19.8	50.7	68.3	-	68.3		
		230	15.4	46.3	63.9	-	63.9		
		243	13.2	41.9	59.5	-	59.5		
		256	11.0	37.5	55.1	-	55.1		
		269	8.8	33.1	50.7	-	50.7		
		282	6.6	30.9	44.1	-	44.1		

Remarks: Superlift mast 98.4 ft

STERLING CRANE

Lifting capacities luffing fly jib with SL, main boom 85°

265,000 lb   25.6 ft SL-Radius 49.2 ft 360° DIN/ISO

157.5 ft Main boom

Fly jib	Radius ft	lb	SL				440.9
			0	132.3	220.5	308.6	
			1,000 lb				
	52		231.5	383.6	432.1	-	443.1
	59		196.2	326.3	412.3	421.1	423.3
	65		169.8	282.2	357.1	403.4	403.4
SWSL	78.7 ft	72	147.7	249.1	317.5	383.6	385.8
		79	132.3	222.7	282.2	343.9	370.4
		85	119.0	200.6	255.7	310.9	339.5
		92	105.8	183.0	233.7	284.4	291.0
							440.9
	59		194.0	324.1	363.8	-	372.6
	65		167.6	280.0	357.1	359.4	361.6
	72		145.5	246.9	315.3	346.1	348.3
	79		130.1	220.5	280.0	335.1	337.3
SWSL	98.4 ft	85	116.8	198.4	253.5	308.6	324.1
		92	105.8	180.8	231.5	282.2	310.9
		98	94.8	165.3	211.6	257.9	284.4
		111	79.4	141.1	180.8	220.5	220.5
							440.9
	65		167.6	280.0	306.4	-	313.1
	72		145.5	246.9	302.0	-	306.4
	79		130.1	220.5	280.0	297.6	299.8
	85		114.6	198.4	253.5	291.0	293.2
SWSL	118.1 ft	92	103.6	180.8	231.5	280.0	282.2
		98	94.8	165.3	211.6	257.9	273.4
		111	79.4	138.9	180.8	220.5	235.9
		124	68.3	121.3	156.5	189.6	189.6
							440.9
	72		143.3	244.7	257.9	-	266.8
	79		127.9	218.3	255.7	-	264.6
	85		114.6	196.2	251.3	-	257.9
	92		101.4	178.6	229.3	249.1	251.3
SWSL	137.8 ft	98	92.6	163.1	209.4	242.5	244.7
		111	77.2	138.9	178.6	218.3	229.3
		124	66.1	119.0	154.3	189.6	205.0
		138	57.3	103.6	136.7	167.6	169.8
	151	48.5	92.6	121.3	138.9	138.9	
							352.7
	79		127.9	209.4	-	-	216.1
	85		114.6	196.2	209.4	-	213.8
	92		101.4	178.6	205.0	-	209.4
	98		92.6	163.1	200.6	-	202.8
SWSL	157.5 ft	111	77.2	138.9	178.6	-	187.4
		124	66.1	119.0	154.3	172.0	172.0
		138	57.3	103.6	136.7	156.5	156.5
		151	48.5	92.6	121.3	143.3	143.3
	164	41.9	81.6	108.0	127.9	127.9	
							352.7
	85		112.4	174.2	-	-	180.8
	92		101.4	174.2	176.4	-	180.8
	98		90.4	160.9	176.4	-	178.6
	111		75.0	136.7	169.8	-	172.0
SWSL	177.2 ft	124	63.9	116.8	154.3	-	158.7
		138	55.1	103.6	134.5	145.5	145.5
		151	48.5	90.4	119.0	134.5	134.5
		164	41.9	81.6	108.0	121.3	121.3
	177	37.5	72.8	97.0	110.2	110.2	
	190	33.1	66.1	88.2	94.8	94.8	

Remarks

Superlift mast 98.4 ft

Fly jib	Radius ft	lb	SL				352.7
			0	132.3	220.5	308.6	
			1,000 lb				
	92		101.4	143.3	-	-	149.9
	98		90.4	143.3	-	-	149.9
	111		75.0	136.7	147.7	-	149.9
SWSL	196.9 ft	124	63.9	116.8	145.5	-	149.9
		138	55.1	103.6	134.5	147.7	147.7
		151	48.5	90.4	119.0	143.3	143.3
		164	41.9	81.6	108.0	134.5	134.5
	177		35.3	72.8	97.0	119.0	119.0
	190		30.9	66.1	88.2	101.4	101.4
	203		28.7	59.5	81.6	86.0	86.0
							352.7
	98		90.4	119.0	-	-	123.5
	111		75.0	119.0	-	-	123.5
	124		61.7	116.8	121.3	-	123.5
	138		52.9	101.4	119.0	-	123.5
SWSL	216.5 ft	151	46.3	88.2	116.8	-	119.0
		164	39.7	79.4	105.8	114.6	114.6
		177	33.1	70.5	94.8	110.2	110.2
		190	28.7	63.9	86.0	105.8	105.8
	203		26.5	57.3	79.4	92.6	92.6
	216		22.0	52.9	72.8	81.6	81.6
	230		19.8	48.5	66.1	68.3	68.3
							352.7
	111		72.8	94.8	-	-	99.2
	124		61.7	94.8	-	-	99.2
	138		52.9	94.8	97.0	-	99.2
	151		44.1	88.2	97.0	-	99.2
SWSL	236.2 ft	164	37.5	77.2	97.0	-	99.2
		177	33.1	70.5	94.8	99.2	99.2
		190	28.7	61.7	86.0	99.2	99.2
		203	24.3	57.3	77.2	94.8	94.8
	216		19.8	50.7	70.5	83.8	83.8
	230		17.6	46.3	66.1	72.8	72.8
	243		15.4	41.9	59.5	63.9	63.9
							352.7
	111		70.5	79.4	-	-	83.8
	124		59.5	79.4	-	-	83.8
	138		50.7	79.4	-	-	83.8
	151		44.1	79.4	81.6	-	83.8
	164		37.5	77.2	81.6	-	81.6
	177		30.9	68.3	79.4	-	81.6
SWSL	255.9 ft	190	26.5	61.7	79.4	-	81.6
		203	22.0	55.1	77.2	81.6	81.6
		216	19.8	50.7	70.5	79.4	79.4
		230	17.6	46.3	63.9	77.2	77.2
	243		13.2	41.9	59.5	66.1	66.1
	256		11.0	37.5	55.1	57.3	57.3
	269		8.8	35.3	48.5	48.5	48.5
							352.7
	124		57.3	61.7	-	-	66.1
	138		48.5	61.7	-	-	66.1
	151		39.7	61.7	-	-	66.1
	164		35.3	61.7	-	-	63.9
	177		28.7	61.7	61.7	-	63.9
	190		24.3	59.5	61.7	-	63.9
SWSL	275.6 ft	203	22.0	55.1	61.7	-	63.9
		216	17.6	48.5	61.7	-	63.9
		230	15.4	44.1	61.7	61.7	61.7
		243	11.0	39.7	57.3	61.7	61.7
	256		8.8	35.3	52.9	61.7	61.7
	269		8.8	33.1	48.5	52.9	52.9
	282		6.6	28.7	44.1	44.1	44.1

STERLING CRANE

Lifting capacities luffing fly jib with SL, main boom 85°

265,000 lb  25.6 ft  SL-Radius 49.2 ft  360°  DIN/ISO

196.9 ft Main boom

Fly jib	Radius	lb	SL				440.9
			0	132.3	220.5	308.6	
		1,000 lb					
	52	227.1	310.9	-	-	321.9	
	59	191.8	310.9	313.1	-	315.3	
	65	165.3	277.8	302.0	-	304.2	
SWSL	78.7 ft	72	143.3	244.7	291.0	-	293.2
		79	127.9	218.3	280.0	-	284.4
	85	114.6	196.2	251.3	275.6	277.8	
	92	103.6	178.6	229.3	271.2	271.2	
	98	94.8	163.1	209.4	257.9	266.8	
							440.9
	59	189.6	275.6	-	-	284.4	
	65	163.1	273.4	275.6	-	280.0	
	72	141.1	242.5	269.0	-	273.4	
	79	125.7	216.1	262.4	-	266.8	
SWSL	98.4 ft	85	112.4	194.0	249.1	-	257.9
		92	101.4	176.4	227.1	249.1	249.1
	98	92.6	160.9	207.2	240.3	242.5	
	111	77.2	136.7	178.6	218.3	229.3	
							352.7
	65	163.1	231.5	-	-	240.3	
	72	141.1	231.5	233.7	-	238.1	
	79	125.7	216.1	229.3	-	231.5	
	85	112.4	194.0	227.1	-	227.1	
SWSL	118.1 ft	92	101.4	176.4	220.5	-	220.5
		98	90.4	160.9	207.2	-	216.1
	111	77.2	136.7	176.4	205.0	205.0	
	124	66.1	119.0	154.3	189.6	189.6	
	138	57.3	103.6	136.7	158.7	158.7	
							352.7
	72	138.9	196.2	-	-	202.8	
	79	123.5	196.2	-	-	202.8	
	85	110.2	191.8	198.4	-	200.6	
	92	99.2	174.2	196.2	-	198.4	
SWSL	137.8 ft	98	90.4	158.7	191.8	-	194.0
		111	75.0	134.5	176.4	-	185.2
	124	63.9	116.8	152.1	178.6	178.6	
	138	55.1	101.4	134.5	165.3	165.3	
	151	46.3	90.4	119.0	147.7	147.7	
							352.7
	79	123.5	163.1	-	-	169.8	
	85	110.2	163.1	-	-	169.8	
	92	99.2	163.1	-	-	169.8	
	98	90.4	158.7	165.3	-	167.6	
SWSL	157.5 ft	111	75.0	134.5	158.7	-	160.9
		124	63.9	116.8	152.1	-	152.1
	138	52.9	101.4	134.5	143.3	143.3	
	151	46.3	90.4	119.0	134.5	134.5	
	164	41.9	79.4	105.8	125.7	125.7	
	177	35.3	72.8	97.0	108.0	108.0	
							352.7
	85	108.0	136.7	-	-	141.1	
	92	97.0	136.7	-	-	141.1	
	98	88.2	136.7	-	-	141.1	
	111	72.8	134.5	138.9	-	141.1	
SWSL	177.2 ft	124	61.7	114.6	136.7	-	138.9
		138	52.9	101.4	132.3	-	134.5
	151	46.3	88.2	116.8	130.1	130.1	
	164	39.7	79.4	105.8	121.3	121.3	
	177	33.1	70.5	94.8	114.6	114.6	
	190	30.9	63.9	86.0	101.4	101.4	

Remarks: Superlift mast 98.4 ft

Fly jib	Radius	lb	SL				352.7
			0	132.3	220.5	308.6	
		1,000 lb					
	92	97.0	112.4	-	-	116.8	
	98	88.2	112.4	-	-	116.8	
	111	72.8	112.4	-	-	116.8	
	124	61.7	112.4	114.6	-	116.8	
	138	52.9	101.4	114.6	-	116.8	
SWSL	196.9 ft	151	46.3	88.2	112.4	-	114.6
		164	39.7	79.4	105.8	114.6	114.6
	177	33.1	70.5	94.8	110.2	110.2	
	190	28.7	63.9	86.0	105.8	105.8	
	203	26.5	57.3	79.4	90.4	90.4	
							352.7
	98	83.8	92.6	-	-	97.0	
	111	70.5	92.6	-	-	97.0	
	124	59.5	92.6	-	-	97.0	
	138	50.7	92.6	92.6	-	94.8	
SWSL	216.5 ft	151	44.1	86.0	92.6	-	94.8
		164	37.5	77.2	92.6	-	94.8
	177	30.9	68.3	92.6	-	94.8	
	190	26.5	61.7	83.8	90.4	90.4	
	203	24.3	55.1	77.2	88.2	88.2	
	216	19.8	50.7	70.5	83.8	83.8	
	230	17.6	46.3	63.9	70.5	70.5	
							352.7
	111	66.1	77.2	-	-	81.6	
	124	57.3	77.2	-	-	81.6	
	138	48.5	77.2	-	-	81.6	
	151	39.7	77.2	79.4	-	81.6	
SWSL	236.2 ft	164	35.3	75.0	79.4	-	81.6
		177	30.9	68.3	79.4	-	81.6
	190	26.5	61.7	77.2	-	79.4	
	203	22.0	55.1	75.0	79.4	79.4	
	216	19.8	50.7	68.3	77.2	77.2	
	230	15.4	46.3	63.9	75.0	75.0	
	243	13.2	41.9	59.5	66.1	66.1	
							352.7
	111	61.7	-	-	-	66.1	
	124	55.1	61.7	-	-	66.1	
	138	46.3	61.7	-	-	66.1	
	151	39.7	61.7	-	-	66.1	
	164	33.1	61.7	-	-	66.1	
	177	28.7	61.7	63.9	-	66.1	
SWSL	255.9 ft	190	24.3	59.5	63.9	-	66.1
		203	22.0	55.1	63.9	-	66.1
	216	17.6	48.5	63.9	-	63.9	
	230	15.4	44.1	61.7	63.9	63.9	
	243	13.2	39.7	57.3	61.7	61.7	
	256	11.0	37.5	52.9	61.7	61.7	
	269	8.8	33.1	48.5	50.7	50.7	
							264.6
	124	50.7	52.9	-	-	55.1	
	138	41.9	52.9	-	-	55.1	
	151	35.3	52.9	-	-	52.9	
	164	30.9	50.7	-	-	52.9	
	177	26.5	50.7	-	-	52.9	
	190	22.0	50.7	52.9	-	52.9	
SWSL	275.6 ft	203	17.6	50.7	52.9	-	52.9
		216	15.4	46.3	52.9	-	52.9
	230	13.2	41.9	50.7	-	50.7	
	243	11.0	37.5	50.7	-	50.7	
	256	8.8	35.3	50.7	-	50.7	
	269	6.6	30.9	48.5	-	48.5	
	282	-	28.7	44.1	-	44.1	

STERLING CRANE

Lifting capacities luffing fly jib with SL, main boom 85°

265,000 lb   25.6 ft SL-Radius 49.2 ft 360° DIN/ISO

236.2 ft Main boom

Fly jib	Radius ft	lb	SL			
			0	132.3	220.5	440.9
			1,000 lb			
	59		185.2	222.7	-	240.3
	65		158.7	220.5	-	235.9
	72		138.9	216.1	-	229.3
SWSL	78.7 ft	79	123.5	213.8	216.1	220.5
		85	110.2	191.8	209.4	213.8
		92	99.2	174.2	207.2	209.4
		98	90.4	160.9	202.8	205.0
			264.6			
	65		156.5	191.8	-	196.2
	72		136.7	191.8	-	196.2
	79		121.3	189.6	-	191.8
	85		108.0	185.2	187.4	187.4
SWSL	98.4 ft	92	97.0	172.0	183.0	183.0
		98	88.2	158.7	178.6	178.6
		111	72.8	134.5	172.0	172.0
			352.7			
	72		136.7	160.9	-	169.8
	79		121.3	160.9	-	167.6
	85		108.0	158.7	-	165.3
	92		97.0	158.7	-	163.1
SWSL	118.1 ft	98	88.2	156.5	158.7	160.9
		111	72.8	134.5	154.3	154.3
		124	61.7	114.6	145.5	147.7
		138	52.9	101.4	132.3	138.9
			264.6			
	79		116.8	141.1	-	143.3
	85		105.8	141.1	-	143.3
	92		94.8	141.1	-	143.3
	98		86.0	138.9	-	143.3
SWSL	137.8 ft	111	70.5	132.3	138.9	138.9
		124	59.5	112.4	134.5	134.5
		138	50.7	99.2	127.9	127.9
		151	44.1	88.2	116.8	116.8
					352.7	
	85		103.6	116.8	-	123.5
	92		94.8	116.8	-	123.5
	98		86.0	116.8	-	123.5
	111		70.5	116.8	-	121.3
SWSL	157.5 ft	124	59.5	114.6	116.8	119.0
		138	50.7	99.2	114.6	116.8
		151	44.1	88.2	110.2	112.4
		164	37.5	77.2	103.6	105.8
		177	33.1	70.5	94.8	101.4
					264.6	
	92		90.4	97.0	-	99.2
	98		81.6	97.0	-	99.2
	111		68.3	97.0	-	99.2
	124		57.3	97.0	-	99.2
SWSL	177.2 ft	138	48.5	97.0	97.0	97.0
		151	41.9	86.0	97.0	97.0
		164	37.5	77.2	92.6	92.6
		177	30.9	68.3	90.4	90.4
		190	26.5	61.7	83.8	83.8
					264.6	

Remarks	
Superlift mast 98.4 ft	

Fly jib	Radius ft	lb	SL					
			0	132.3	220.5	264.6		
			1,000 lb					
	98		77.2	-	-	81.6		
	111		66.1	79.4	-	81.6		
	124		57.3	79.4	-	81.6		
	138		48.5	79.4	-	81.6		
	151		41.9	79.4	79.4	79.4		
SWSL	196.9 ft	164	35.3	77.2	79.4	79.4		
		177	30.9	68.3	77.2	77.2		
		190	26.5	61.7	75.0	75.0		
		203	24.3	55.1	72.8	72.8		
	216		19.8	50.7	70.5	70.5		
			264.6					
	98		63.9	-	-	68.3		
	111		63.9	66.1	-	68.3		
	124		52.9	66.1	-	68.3		
	138		44.1	66.1	-	66.1		
SWSL	216.5 ft	151	37.5	63.9	-	66.1		
		164	33.1	63.9	-	66.1		
		177	28.7	63.9	66.1	66.1		
		190	24.3	59.5	63.9	63.9		
		203	22.0	55.1	63.9	63.9		
		216	17.6	48.5	61.7	61.7		
	230		15.4	44.1	61.7	61.7		
			264.6					
	111		55.1	-	-	57.3		
	124		50.7	55.1	-	57.3		
	138		41.9	55.1	-	57.3		
	151		35.3	55.1	-	55.1		
SWSL	236.2 ft	164	30.9	52.9	-	55.1		
		177	26.5	50.7	-	52.9		
		190	22.0	50.7	50.7	50.7		
		203	19.8	48.5	50.7	50.7		
		216	15.4	48.5	48.5	48.5		
		230	13.2	44.1	48.5	48.5		
		243	11.0	39.7	46.3	46.3		
		256	8.8	35.3	46.3	46.3		
					264.6			
			111		48.5	-	-	50.7
	124		48.5	48.5	-	50.7		
	138		39.7	48.5	-	50.7		
	151		35.3	48.5	-	50.7		
	164		28.7	48.5	-	48.5		
	177		24.3	46.3	-	48.5		
SWSL	255.9 ft	190	19.8	46.3	48.5	48.5		
		203	17.6	46.3	48.5	48.5		
		216	15.4	46.3	46.3	46.3		
		230	13.2	41.9	44.1	44.1		
		243	11.0	37.5	44.1	44.1		
		256	8.8	35.3	41.9	41.9		
		269	6.6	30.9	39.7	39.7		
					264.6			
	124		44.1	48.5	-	48.5		
	138		37.5	46.3	-	46.3		
	151		30.9	44.1	-	44.1		
	164		26.5	41.9	-	41.9		
	177		22.0	39.7	-	41.9		
	190		17.6	39.7	-	39.7		
SWSL	275.6 ft	203	15.4	39.7	-	39.7		
		216	11.0	39.7	39.7	39.7		
		230	8.8	37.5	37.5	37.5		
		243	6.6	35.3	35.3	35.3		
		256	6.6	33.1	35.3	35.3		
		269	-	28.7	33.1	33.1		
		282	-	26.5	33.1	33.1		
		295	-	24.3	30.9	30.9		