



## LIFTING CHARTS - Crawler Cranes

### DEMAG MODEL CC 2800 - 660 TON CAPACITY

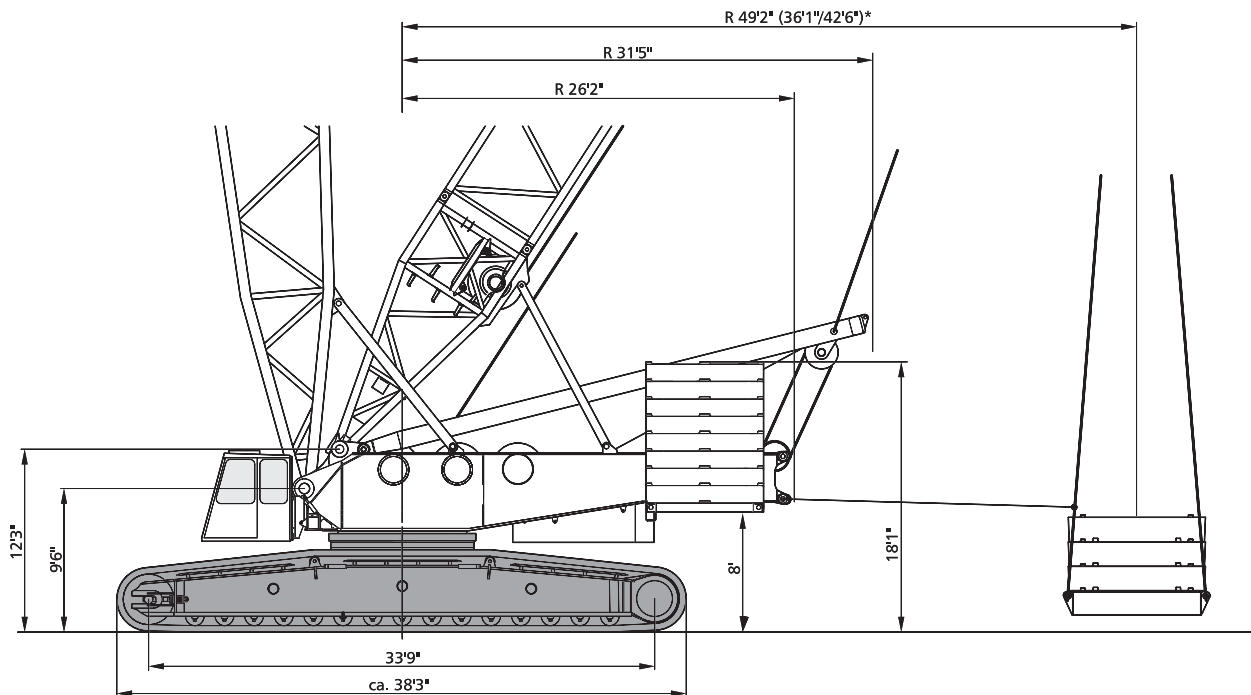
## Specifications

Working speeds (infinitely variable)

Mechanisms	Speeds <sup>1)</sup>	Single line pull	Length of hoist rope
Hoist 1	max. 393.7 ft	36,420 lb / 32,500 lb <sup>2)</sup>	2952.8 ft
Hoist 2	max. 393.7 ft	36,420 lb / 32,500 lb <sup>2)</sup>	2952.8 ft
Boom derricking	max. 393.7 ft		
Boom hoist	max. 171.0 ft		
Fly jib luffing	max. 393.7 ft		
Slewing (RPM)	0.7		

1) Top layer

2) Without/with reeving effect considered



## Specifications

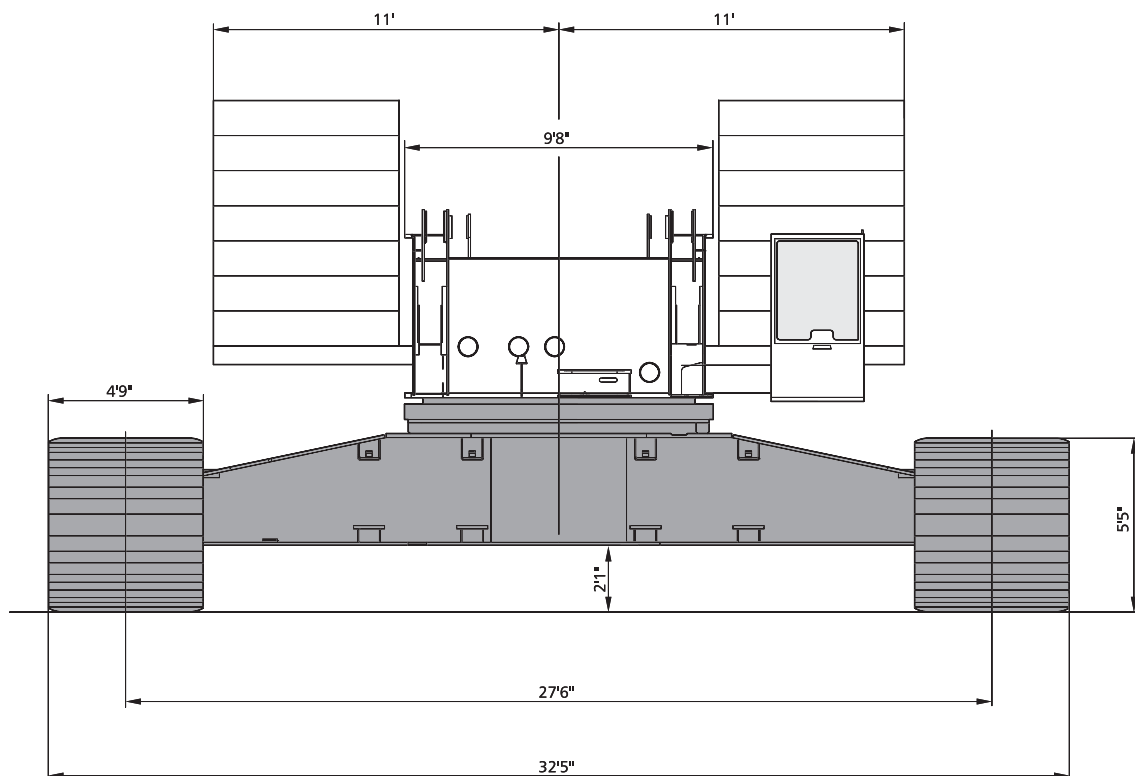
### Hook blocks

Capacity	Number of sheaves	Number of lines	Weight	„D“
1.322,770 lb <sup>1)</sup>	2 x 11	2 x 22	25,400 lb	16.4 ft
881,850 lb <sup>1)</sup>	2 x 7	2 x 14	22,100 lb	15.7 ft
220,460 lb	3	7	11,100 lb	14.9 ft
110,230 lb	1	3	6,200 lb	13.1 ft
35,300 lb	-	1	1,980 lb	9.8 ft

<sup>1)</sup> The double hook blocks can be converted into single hook blocks

### Carrier performance

1 <sup>st</sup> gear	0-0.9 mph
2 <sup>nd</sup> gear	0-1.8 mph



# STERLING CRANE

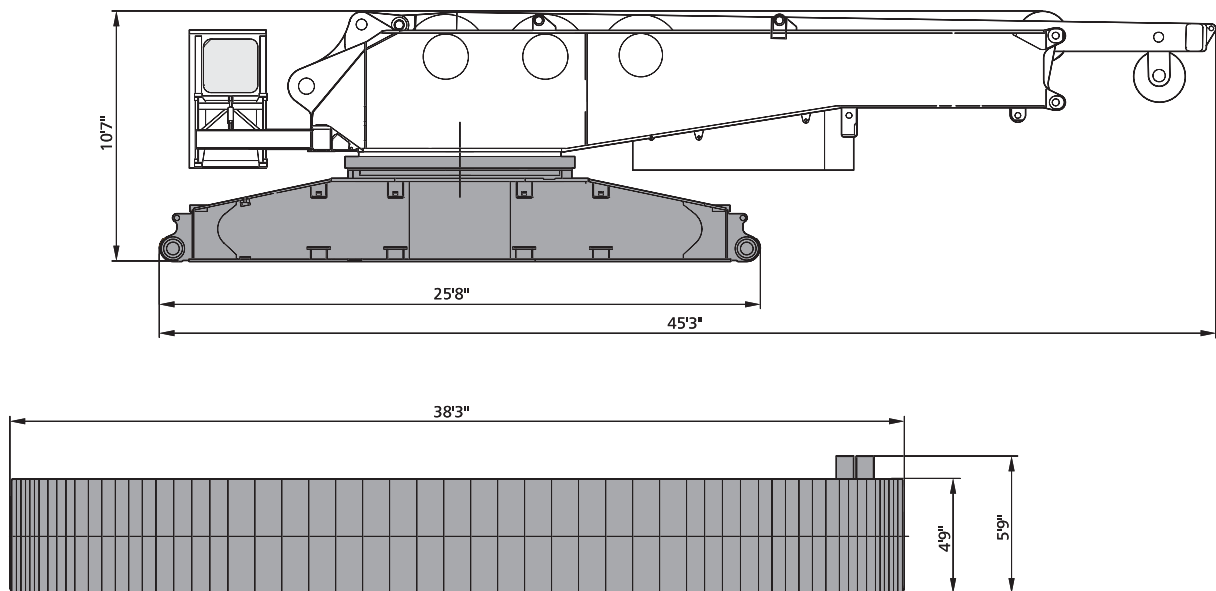
## Specifications

### Weights

Total weight incl. counterweight 353,000 lb, 78.7 ft SH boom and hook block	794,000 lb
Superstructure (with three drums, A-frame, reeving drum and boom backstops)	121,300 lb
Superstructure (without drums H1/H3, reeving winch and boom backstops) incl. part of quick-connection	88,200 lb
Carbody / Carbody with assembly jacks	55,200 / 60,000 lb
Crawlers	2 x 86,000 lb
Counterweight	353,000 lb

### Ground pressure

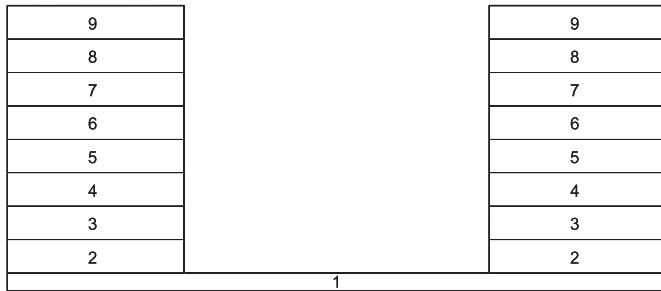
Ground pressure, based on 794,000 lb total weight	5.36 lb/ft <sup>2</sup>
---	-------------------------



# STERLING CRANE

## Specifications

Counterweights on upper



Central ballast (ZB)

