

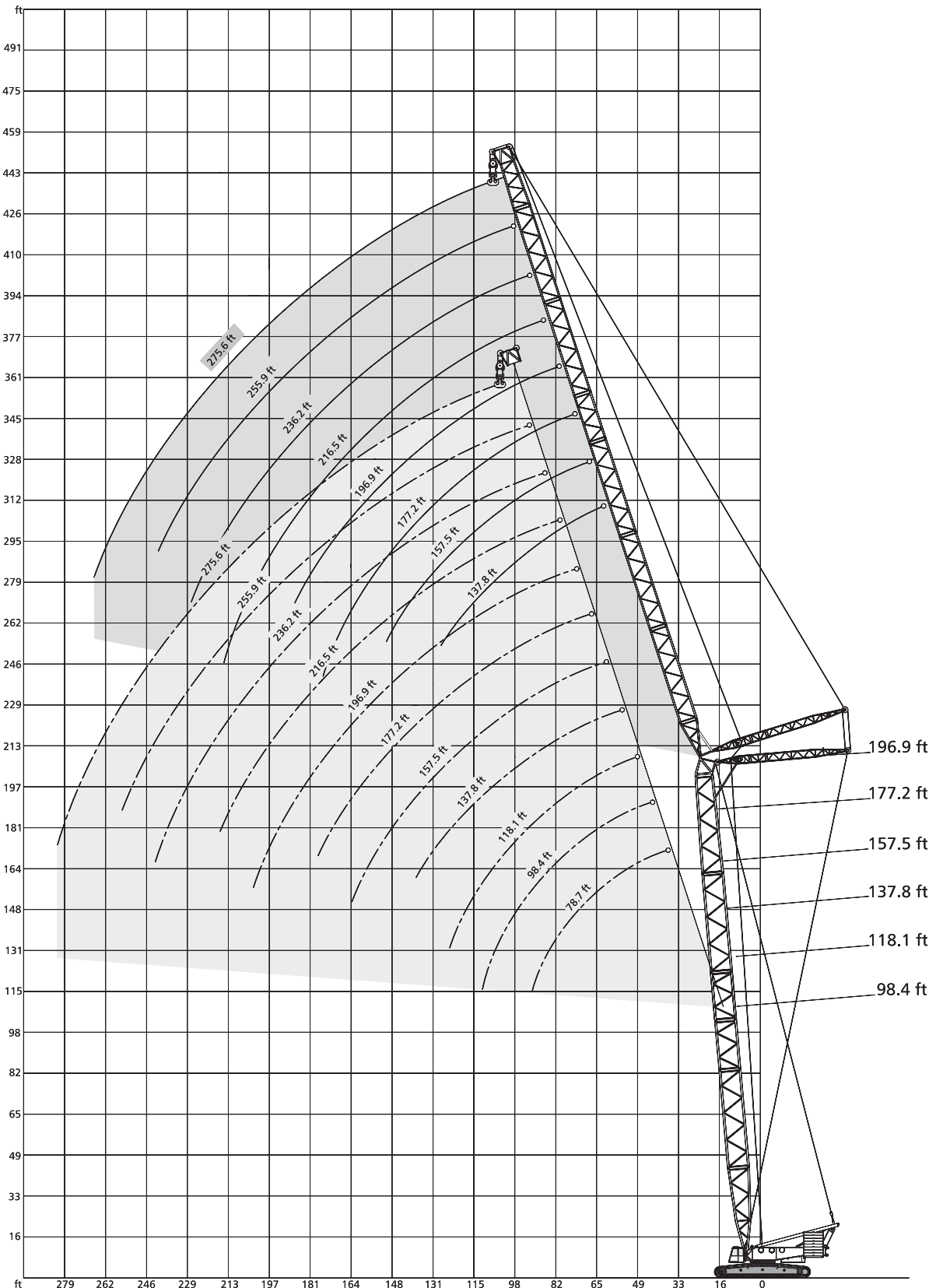


LIFTING CHARTS - Crawler Cranes

DEMAG MODEL CC 2800 - 660 TON CAPACITY

Working ranges luffing fly jib, main boom 85°

SW



Lifting capacities luffing fly jib, main boom 85°

397,000 lb¹⁾  27.6 ft 360° DIN/ISO

98.4 ft Main boom		Fly jib										
Radius	ft	78.7	98.4	118.1	137.8	157.5	177.2	196.9	216.5	236.2	255.9	275.6
	ft	1,000 lb										
	46	456.4	-	-	-	-	-	-	-	-	-	-
	52	377.0	374.8	-	-	-	-	-	-	-	-	-
	59	319.7	317.5	315.3	-	-	-	-	-	-	-	-
	65	275.6	273.4	273.4	271.2	-	-	-	-	-	-	-
	72	242.5	240.3	240.3	238.1	235.9	-	-	-	-	-	-
	79	216.1	213.8	213.8	211.6	209.4	207.2	-	-	-	-	-
	85	194.0	191.8	191.8	189.6	187.4	185.2	183.0	-	-	-	-
	92	176.4	174.2	174.2	172.0	169.8	167.6	165.3	163.1	-	-	-
	98	-	158.7	158.7	156.5	154.3	152.1	149.9	149.9	147.7	-	-
SW	111	-	134.5	134.5	132.3	130.1	127.9	125.7	125.7	123.5	121.3	119.0
	124	-	-	114.6	112.4	112.4	110.2	108.0	105.8	103.6	101.4	99.2
	138	-	-	-	99.2	97.0	94.8	92.6	92.6	90.4	88.2	86.0
	151	-	-	-	-	86.0	83.8	81.6	79.4	77.2	75.0	72.8
	164	-	-	-	-	75.0	72.8	70.5	68.3	66.1	63.9	61.7
	177	-	-	-	-	-	66.1	63.9	61.7	59.5	57.3	55.1
	190	-	-	-	-	-	-	57.3	55.1	52.9	50.7	48.5
	203	-	-	-	-	-	-	50.7	48.5	46.3	44.1	41.9
	216	-	-	-	-	-	-	-	44.1	41.9	39.7	37.5
	230	-	-	-	-	-	-	-	-	37.5	35.3	33.1
	243	-	-	-	-	-	-	-	-	33.1	30.9	28.7
	256	-	-	-	-	-	-	-	-	-	28.7	26.5
	269	-	-	-	-	-	-	-	-	-	-	22.0
	282	-	-	-	-	-	-	-	-	-	-	19.8

118.1 ft Main boom		Fly jib										
Radius	ft	78.7	98.4	118.1	137.8	157.5	177.2	196.9	216.5	236.2	255.9	275.6
	ft	1,000 lb										
	52	372.6	-	-	-	-	-	-	-	-	-	-
	59	317.5	315.3	313.1	-	-	-	-	-	-	-	-
	65	273.4	271.2	271.2	269.0	-	-	-	-	-	-	-
	72	240.3	238.1	238.1	235.9	233.7	-	-	-	-	-	-
	79	213.8	211.6	211.6	209.4	207.2	205.0	-	-	-	-	-
	85	191.8	191.8	189.6	187.4	185.2	183.0	180.8	-	-	-	-
	92	174.2	174.2	172.0	169.8	167.6	165.3	163.1	163.1	-	-	-
	98	-	158.7	156.5	154.3	152.1	149.9	149.9	147.7	145.5	-	-
	111	-	134.5	132.3	130.1	127.9	125.7	125.7	123.5	121.3	121.3	119.0
SW	124	-	-	114.6	112.4	110.2	108.0	105.8	103.6	101.4	99.2	97.0
	138	-	-	-	97.0	94.8	92.6	92.6	90.4	88.2	86.0	83.8
	151	-	-	-	86.0	83.8	81.6	79.4	77.2	75.0	72.8	70.5
	164	-	-	-	-	75.0	72.8	70.5	68.3	66.1	63.9	61.7
	177	-	-	-	-	-	63.9	61.7	59.5	57.3	55.1	52.9
	190	-	-	-	-	-	-	57.3	55.1	52.9	50.7	48.5
	203	-	-	-	-	-	-	50.7	48.5	46.3	44.1	41.9
	216	-	-	-	-	-	-	-	44.1	41.9	39.7	37.5
	230	-	-	-	-	-	-	-	-	37.5	35.3	33.1
	243	-	-	-	-	-	-	-	-	33.1	30.9	28.7
	256	-	-	-	-	-	-	-	-	-	28.7	26.5
	269	-	-	-	-	-	-	-	-	-	-	22.0
	282	-	-	-	-	-	-	-	-	-	-	19.8
	295	-	-	-	-	-	-	-	-	-	-	-

Remarks

¹⁾ with 132,000 lb central ballast

Lifting capacities luffing fly jib, main boom 85°

397,000 lb¹⁾  27.6 ft  360°  DIN/ISO

137.8 ft Main boom		Fly jib											
Radius	ft	78.7	98.4	118.1	137.8	157.5	177.2	196.9	216.5	236.2	255.9	275.6	
ft		1,000 lb											
	52	370.4	-	-	-	-	-	-	-	-	-	-	
	59	313.1	313.1	-	-	-	-	-	-	-	-	-	
	65	271.2	269.0	269.0	-	-	-	-	-	-	-	-	
	72	238.1	235.9	235.9	233.7	-	-	-	-	-	-	-	
	79	211.6	211.6	209.4	207.2	205.0	202.8	-	-	-	-	-	
	85	189.6	189.6	187.4	185.2	183.0	180.8	180.8	-	-	-	-	
	92	172.0	172.0	169.8	167.6	165.3	163.1	163.1	160.9	-	-	-	
	98	-	156.5	154.3	152.1	152.1	147.7	147.7	145.5	143.3	-	-	
	111	-	132.3	130.1	127.9	127.9	125.7	123.5	121.3	119.0	119.0	116.8	
SW	124	-	-	112.4	110.2	108.0	105.8	105.8	103.6	101.4	101.4	99.2	
	138	-	-	-	97.0	94.8	92.6	90.4	88.2	86.0	86.0	83.8	
	151	-	-	-	83.8	83.8	81.6	79.4	77.2	75.0	75.0	72.8	
	164	-	-	-	-	72.8	70.5	70.5	68.3	66.1	66.1	63.9	
	177	-	-	-	-	-	63.9	61.7	59.5	57.3	57.3	55.1	
	190	-	-	-	-	-	57.3	55.1	52.9	50.7	50.7	48.5	
	203	-	-	-	-	-	-	48.5	48.5	44.1	44.1	41.9	
	216	-	-	-	-	-	-	-	41.9	39.7	39.7	37.5	
	230	-	-	-	-	-	-	-	-	37.5	35.3	35.3	30.9
	243	-	-	-	-	-	-	-	-	-	30.9	30.9	28.7
	256	-	-	-	-	-	-	-	-	-	26.5	24.3	
	269	-	-	-	-	-	-	-	-	-	-	22.0	
	282	-	-	-	-	-	-	-	-	-	-	17.6	
	295	-	-	-	-	-	-	-	-	-	-	-	

157.5 ft Main boom		Fly jib											
Radius	ft	78.7	98.4	118.1	137.8	157.5	177.2	196.9	216.5	236.2	255.9	275.6	
ft		1,000 lb											
	52	368.2	-	-	-	-	-	-	-	-	-	-	
	59	310.9	308.6	-	-	-	-	-	-	-	-	-	
	65	269.0	266.8	266.8	-	-	-	-	-	-	-	-	
	72	235.9	233.7	233.7	231.5	-	-	-	-	-	-	-	
	79	209.4	209.4	207.2	205.0	202.8	-	-	-	-	-	-	
	85	189.6	187.4	185.2	183.0	180.8	178.6	-	-	-	-	-	
	92	169.8	169.8	167.6	165.3	163.1	160.9	160.9	-	-	-	-	
	98	156.5	154.3	154.3	149.9	149.9	147.7	145.5	143.3	-	-	-	
	111	-	130.1	130.1	127.9	125.7	123.5	121.3	119.0	116.8	116.8	114.6	
SW	124	-	-	112.4	108.0	108.0	105.8	103.6	101.4	99.2	99.2	97.0	
	138	-	-	-	94.8	92.6	90.4	90.4	88.2	86.0	86.0	83.8	
	151	-	-	-	83.8	81.6	79.4	77.2	77.2	75.0	72.8	70.5	
	164	-	-	-	-	72.8	70.5	68.3	66.1	63.9	63.9	61.7	
	177	-	-	-	-	-	61.7	61.7	59.5	57.3	55.1	52.9	
	190	-	-	-	-	-	55.1	55.1	52.9	50.7	48.5	46.3	
	203	-	-	-	-	-	-	48.5	46.3	44.1	44.1	39.7	
	216	-	-	-	-	-	-	-	41.9	39.7	37.5	35.3	
	230	-	-	-	-	-	-	-	-	37.5	33.1	33.1	30.9
	243	-	-	-	-	-	-	-	-	-	30.9	28.7	26.5
	256	-	-	-	-	-	-	-	-	-	26.5	24.3	
	269	-	-	-	-	-	-	-	-	-	22.0	19.8	
	282	-	-	-	-	-	-	-	-	-	-	17.6	
	295	-	-	-	-	-	-	-	-	-	-	-	

Remarks

¹⁾ with 132,000 lb central ballast

Lifting capacities luffing fly jib, main boom 85°

397,000 lb¹⁾  27.6 ft 360° DIN/ISO

177.2 ft Main boom

		Fly jib										
Radius ft		78.7	98.4	118.1	137.8	157.5	177.2	196.9	216.5	236.2	255.9	275.6
ft		1,000 lb										
	59	306.4	-	-	-	-	-	-	-	-	-	-
	65	264.6	262.4	-	-	-	-	-	-	-	-	-
	72	231.5	231.5	227.1	-	-	-	-	-	-	-	-
	79	207.2	205.0	202.8	200.6	-	-	-	-	-	-	-
	85	185.2	183.0	180.8	180.8	176.4	-	-	-	-	-	-
	92	167.6	165.3	163.1	163.1	158.7	158.7	-	-	-	-	-
	98	152.1	152.1	149.9	147.7	145.5	143.3	141.1	-	-	-	-
	111	130.1	127.9	125.7	123.5	121.3	119.0	119.0	116.8	114.6	-	-
	124	-	110.2	108.0	105.8	103.6	101.4	101.4	99.2	97.0	94.8	-
SW	138	-	97.0	92.6	92.6	90.4	88.2	86.0	83.8	83.8	81.6	-
	151	-	-	81.6	81.6	77.2	77.2	75.0	72.8	72.8	70.5	-
	164	-	-	-	70.5	68.3	68.3	66.1	63.9	63.9	61.7	-
	177	-	-	-	-	61.7	59.5	57.3	55.1	55.1	52.9	-
	190	-	-	-	-	55.1	52.9	50.7	48.5	48.5	46.3	-
	203	-	-	-	-	-	46.3	46.3	41.9	41.9	39.7	-
	216	-	-	-	-	-	-	39.7	37.5	37.5	35.3	-
	230	-	-	-	-	-	-	35.3	33.1	33.1	28.7	-
	243	-	-	-	-	-	-	-	28.7	28.7	26.5	-
	256	-	-	-	-	-	-	-	-	24.3	22.0	-
	269	-	-	-	-	-	-	-	-	-	22.0	19.8
	282	-	-	-	-	-	-	-	-	-	-	15.4

196.9 ft Main boom

		1,000 lb										
ft		78.7	98.4	118.1	137.8	157.5	177.2	196.9	216.5	236.2	255.9	275.6
	65	-	260.1	-	-	-	-	-	-	-	-	-
	72	-	227.1	224.9	-	-	-	-	-	-	-	-
	79	-	202.8	200.6	198.4	-	-	-	-	-	-	-
	85	-	180.8	178.6	176.4	174.2	-	-	-	-	-	-
	92	-	165.3	160.9	160.9	156.5	156.5	-	-	-	-	-
	98	-	149.9	147.7	145.5	143.3	141.1	138.9	-	-	-	-
	111	-	125.7	123.5	121.3	119.0	119.0	116.8	114.6	110.2	-	-
	124	-	108.0	105.8	103.6	101.4	101.4	99.2	97.0	94.8	94.8	-
	138	-	94.8	92.6	90.4	88.2	86.0	86.0	81.6	81.6	81.6	79.4
SW	151	-	-	81.6	79.4	77.2	75.0	72.8	70.5	70.5	68.3	-
	164	-	-	-	70.5	68.3	66.1	63.9	61.7	61.7	59.5	-
	177	-	-	-	61.7	59.5	57.3	57.3	55.1	52.9	50.7	-
	190	-	-	-	-	52.9	52.9	50.7	46.3	46.3	44.1	-
	203	-	-	-	-	-	46.3	44.1	41.9	39.7	37.5	-
	216	-	-	-	-	-	-	39.7	35.3	35.3	33.1	-
	230	-	-	-	-	-	-	35.3	30.9	30.9	28.7	-
	243	-	-	-	-	-	-	-	28.7	26.5	24.3	-
	256	-	-	-	-	-	-	-	-	24.3	22.0	-
	269	-	-	-	-	-	-	-	-	-	19.8	17.6
	282	-	-	-	-	-	-	-	-	-	-	15.4
	295	-	-	-	-	-	-	-	-	-	-	-

Remarks

¹⁾ with 132,000 lb central ballast