

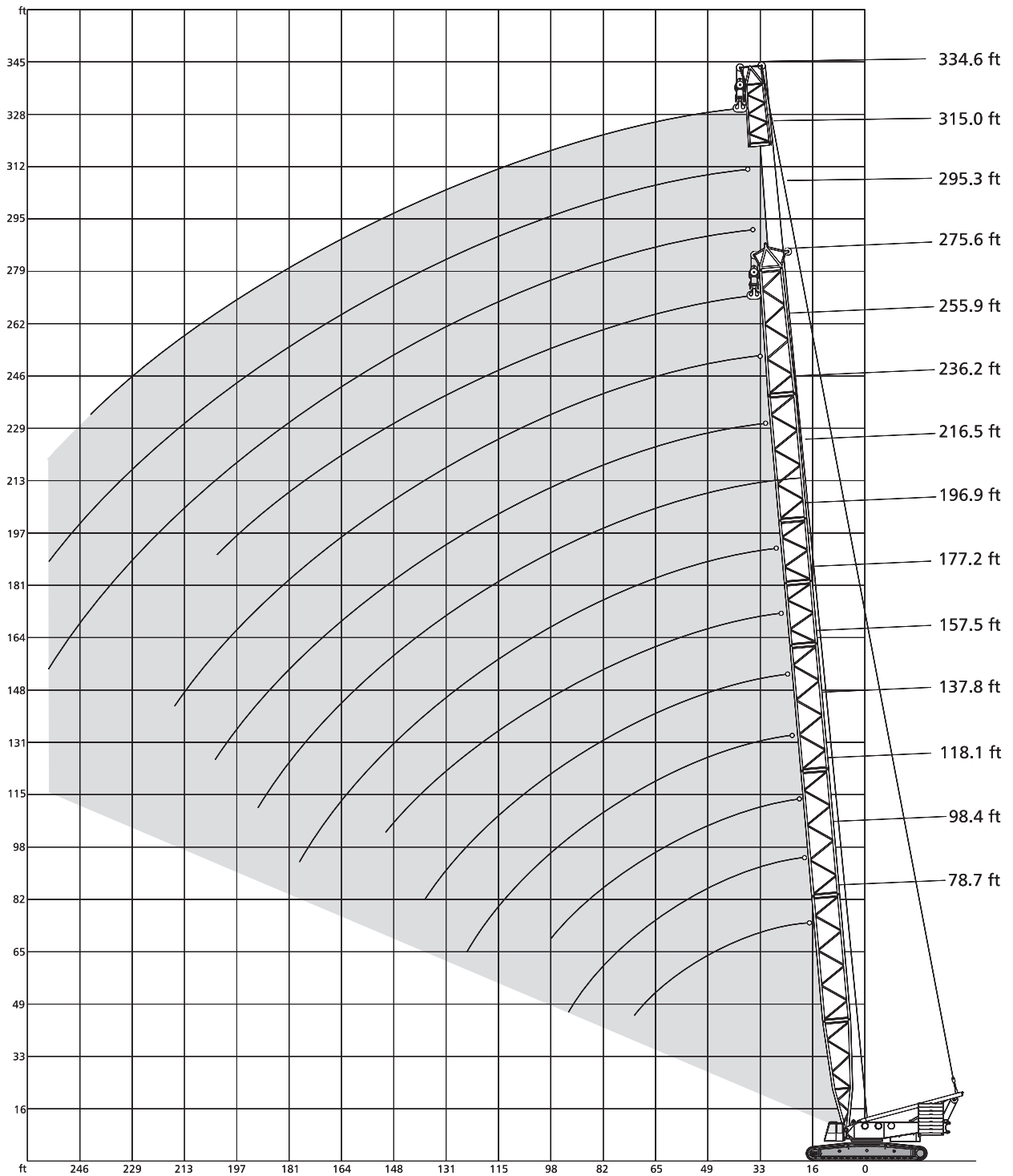


LIFTING CHARTS - Crawler Cranes

DEMAG MODEL CC 2800 - 660 TON CAPACITY

Working ranges main boom

SH, SH/LH



Lifting capacities main boom

397,000 lb¹⁾  27.6 ft 360° 

		Main boom										
Radius	ft	78.7	98.4	118.1	137.8	157.5	177.2	196.9	216.5	236.2	255.9	275.6
	ft	1,000 lb										
	19	1322.8	-	-	-	-	-	-	-	-	-	-
	23	1263.2	1256.6	1250.0	-	-	-	-	-	-	-	-
	26	1115.5	1108.9	1100.1	1095.7	1089.1	-	-	-	-	-	-
	29	892.9	890.7	886.3	884.1	881.8	881.8	879.6	-	-	-	-
	33	734.1	729.7	727.5	723.1	720.9	720.9	718.7	716.5	663.6	-	-
	39	537.9	533.5	529.1	526.9	522.5	522.5	520.3	518.1	518.1	515.9	467.4
	46	421.1	416.7	412.3	410.1	405.7	405.7	403.4	401.2	399.0	399.0	394.6
	52	343.9	339.5	337.3	332.9	328.5	328.5	324.1	324.1	321.9	319.7	317.5
	59	291.0	286.6	282.2	277.8	275.6	273.4	269.0	269.0	266.8	264.6	262.4
	65	249.1	244.7	240.3	238.1	233.7	231.5	229.3	227.1	224.9	222.7	220.5
	72	218.3	213.8	209.4	205.0	202.8	200.6	196.2	196.2	194.0	191.8	187.4
SH	79	-	189.6	185.2	180.8	176.4	174.2	172.0	169.8	167.6	165.3	163.1
	85	-	169.8	165.3	160.9	156.5	154.3	152.1	149.9	147.7	145.5	141.1
	92	-	154.3	147.7	143.3	138.9	136.7	134.5	132.3	130.1	127.9	123.5
	98	-	-	134.5	130.1	125.7	123.5	119.0	116.8	114.6	114.6	110.2
	111	-	-	-	108.0	103.6	99.2	97.0	94.8	92.6	90.4	86.0
	124	-	-	-	90.4	86.0	83.8	79.4	77.2	72.8	70.5	66.1
	138	-	-	-	-	72.8	70.5	66.1	61.7	59.5	57.3	52.9
	151	-	-	-	-	-	59.5	52.9	50.7	48.5	44.1	39.7
	164	-	-	-	-	-	-	44.1	41.9	37.5	35.3	30.9
	177	-	-	-	-	-	-	37.5	35.3	30.9	28.7	22.0
	190	-	-	-	-	-	-	28.7	24.3	22.0	15.4	
	203	-	-	-	-	-	-	-	19.8	15.4	11.0	
	216	-	-	-	-	-	-	-	-	11.0	-	
	230	-	-	-	-	-	-	-	-	-	-	

353,000 lb  27.6 ft 360° 

		Main boom										
Radius	ft	78.7	98.4	118.1	137.8	157.5	177.2	196.9	216.5	236.2	255.9	275.6
	ft	1,000 lb										
	19	1322.8	-	-	-	-	-	-	-	-	-	-
	23	1239.0	1232.4	1225.8	-	-	-	-	-	-	-	-
	26	1049.4	1047.2	1042.8	1040.6	1038.4	-	-	-	-	-	-
	29	822.3	820.1	817.9	813.5	811.3	811.3	809.1	-	-	-	-
	33	674.6	672.4	670.2	665.8	663.6	661.4	661.4	659.2	657.0	-	-
	39	493.8	491.6	487.2	482.8	480.6	478.4	476.2	476.2	474.0	474.0	467.4
	46	385.8	383.6	379.2	374.8	372.6	370.4	368.2	366.0	366.0	363.8	361.6
	52	315.3	313.1	308.6	304.2	302.0	299.8	297.6	295.4	293.2	291.0	288.8
	59	266.8	262.4	257.9	253.5	251.3	249.1	246.9	244.7	242.5	240.3	238.1
	65	229.3	224.9	220.5	216.1	211.6	209.4	207.2	205.0	205.0	202.8	198.4
	72	200.6	196.2	191.8	187.4	183.0	180.8	178.6	176.4	174.2	172.0	169.8
SH	79	-	172.0	167.6	163.1	160.9	158.7	154.3	152.1	152.1	149.9	145.5
	85	-	154.3	149.9	145.5	141.1	138.9	136.7	134.5	132.3	130.1	125.7
	92	-	138.9	134.5	130.1	125.7	123.5	119.0	119.0	116.8	114.6	110.2
	98	-	-	121.3	116.8	112.4	110.2	105.8	105.8	101.4	101.4	97.0
	111	-	-	-	97.0	92.6	88.2	86.0	83.8	79.4	77.2	72.8
	124	-	-	-	81.6	77.2	72.8	68.3	66.1	63.9	61.7	57.3
	138	-	-	-	-	63.9	59.5	55.1	52.9	50.7	46.3	41.9
	151	-	-	-	-	-	50.7	46.3	41.9	39.7	37.5	30.9
	164	-	-	-	-	-	-	37.5	33.1	30.9	28.7	22.0
	177	-	-	-	-	-	-	30.9	26.5	24.3	19.8	15.4
	190	-	-	-	-	-	-	22.0	17.6	15.4	-	
	203	-	-	-	-	-	-	-	13.2	-	-	

Remarks

¹⁾ with 132,000 lb central ballast

Lifting capacities main boom

397,000 lb¹⁾  27.6 ft  360° 

		Main boom						
Radius	ft	216.5	236.2	255.9	275.6	295.3	315.0	334.6
		1,000 lb						
	ft							
	29	657.0	-	-	-	-	-	-
	33	657.0	549.0	445.3	-	-	-	-
	39	533.5	533.5	445.3	372.6	339.5	302.0	-
	46	414.5	414.5	383.6	330.7	339.5	302.0	238.1
	52	337.3	337.3	337.3	293.2	313.1	280.0	218.3
	59	282.2	282.2	282.2	262.4	277.8	260.1	200.6
	65	240.3	240.3	240.3	235.9	238.1	235.9	185.2
	72	209.4	209.4	207.2	205.0	205.0	202.8	172.0
	79	183.0	183.0	183.0	180.8	178.6	178.6	158.7
	85	163.1	163.1	160.9	158.7	158.7	156.5	149.9
	92	145.5	145.5	143.3	143.3	141.1	138.9	138.9
SH/LH	98	130.1	130.1	130.1	127.9	125.7	125.7	123.5
	111	108.0	108.0	105.8	103.6	103.6	101.4	101.4
	124	90.4	90.4	88.2	86.0	86.0	83.8	83.8
	138	77.2	75.0	75.0	72.8	70.5	68.3	68.3
	151	66.1	63.9	63.9	59.5	59.5	57.3	55.1
	164	55.1	55.1	52.9	50.7	48.5	46.3	46.3
	177	48.5	46.3	44.1	41.9	39.7	39.7	37.5
	190	41.9	39.7	37.5	35.3	33.1	30.9	30.9
	203	-	35.3	33.1	28.7	28.7	26.5	24.3
	216	-	-	28.7	24.3	22.0	19.8	19.8
	230	-	-	24.3	19.8	17.6	15.4	15.4
	243	-	-	-	17.6	15.4	13.2	11.0
	256	-	-	-	-	11.0	8.8	-
	269	-	-	-	-	-	-	-

353,000 lb  27.6 ft  360° 

		Main boom						
Radius	ft	216.5	236.2	255.9	275.6	295.3	315.0	334.6
		1,000 lb						
	ft							
	29	657.0	-	-	-	-	-	-
	33	657.0	549.0	445.3	-	-	-	-
	39	489.4	489.4	445.3	372.6	339.5	302.0	-
	46	381.4	381.4	381.4	330.7	339.5	302.0	238.1
	52	308.6	308.6	308.6	293.2	306.4	280.0	218.3
	59	257.6	257.9	257.9	255.7	253.5	253.5	200.6
	65	220.5	220.5	218.3	216.1	216.1	213.8	185.2
	72	189.6	189.6	189.6	187.4	187.4	185.2	172.0
	79	167.6	167.6	165.3	163.1	163.1	160.9	158.7
	85	147.7	147.7	145.5	143.3	143.3	141.1	141.1
	92	132.3	132.3	130.1	127.9	127.9	125.7	125.7
SH/LH	98	119.0	116.8	116.8	114.6	114.6	112.4	110.2
	111	97.0	97.0	94.8	92.6	92.6	90.4	90.4
	124	79.4	79.4	79.4	77.2	75.0	72.8	72.8
	138	68.3	66.1	66.1	63.9	61.7	59.5	57.3
	151	57.3	55.1	55.1	52.9	50.7	48.5	46.3
	164	48.5	46.3	46.3	41.9	41.9	39.7	37.5
	177	39.7	39.7	37.5	35.3	33.1	30.9	30.9
	190	35.3	33.1	30.9	28.7	26.5	24.3	24.3
	203	-	28.7	26.5	24.3	22.0	19.8	17.6
	216	-	-	22.0	19.8	17.6	15.4	13.2
	230	-	-	17.6	15.4	13.2	11.0	8.8
	243	-	-	-	11.0	8.8	-	-

Remarks

¹⁾ with 132,000 lb central ballast